

Registre seu produto e obtenha suporte em
www.philips.com/welcome

CIC Centro de Informações
ao Consumidor

PHILIPS

Grande SP: 2121-0203
Demais localidades: 0800 701 0203

HTS3560

Foto somente ilustrativa



PT-BR **Manual do Usuário**

ES **Manual del usuario**

EN **User manual**



PHILIPS

Contents

1 Notice	2
Copyright	2
Open source software	2
Trademarks	2
2 Important	3
Safety	3
Product care	4
Health warning	4
Disposal of your old product and batteries	4
3 Your home theater	5
Main unit	5
Remote control	5
4 Connect your home theater	7
Connectors	7
Connect to the TV	7
Connect audio from TV or other devices	8
Connect to the internet	8
5 Use your home theater	9
Before you start	9
Access the home menu	9
Choose your sound	10
Play a disc	11
Use BonusView on Blu-ray	11
Access BD-Live on Blu-ray	11
Play 3D video	12
Play from a USB storage device	12
More play features for disc or USB	12
Play from radio	13
Play audio from TV or other devices	14
Play from an MP3 player	14
Use Philips EasyLink	14

6 Change settings	15
Access the setup menu	15
Change video settings	15
Change audio settings	15
Set up network	16
Set up EasyLink	16
Change preference settings	16
Change advanced settings	17
7 Update software	17
Check software version	17
Update software from the network	17
Update software from a USB	18
8 Product specifications	18
9 Troubleshooting	20
10 Index	21

1 Notice

Copyright



Be responsible
Respect copyrights

This item incorporates copy protection technology that is protected by U.S. patents and other intellectual property rights of Rovi Corporation. Reverse engineering and disassembly are prohibited.

Open source software

Philips Electronics Singapore Pte Ltd hereby offers to deliver; upon request, a copy of the complete corresponding source code for the copyrighted open source software packages used in this product for which such offer is requested by the respective licenses. This offer is valid up to three years after product purchase to anyone in receipt of this information. To obtain source code, please contact open.source@philips.com. If you prefer not to use email or if you do not receive confirmation receipt within a week after mailing to this email address, please write to "Open Source Team, Philips Intellectual Property & Standards, P.O. Box 220, 5600 AE Eindhoven, The Netherlands". If you do not receive timely confirmation of your letter, please email to the email address above. The texts of the licenses and acknowledgements for open source software used in this product are included on a separate leaflet.

Trademarks



"Blu-ray 3D" and "Blu-ray 3D" logo are trademarks of Blu-ray Disc Association.



BONUSVIEW™

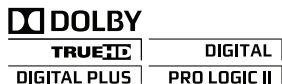
'BD LIVE' and 'BONUSVIEW' are trademarks of Blu-ray Disc Association.



Java and all other Java trademarks and logos are trademarks or registered trademarks of Sun Microsystems, Inc. in the United States and/or other countries.

x.v.Colour

'x.v.Colour' is a trademark of Sony Corporation.



Manufactured under license from Dolby Laboratories. Dolby, Pro Logic, and the double-D symbol are trademarks of Dolby Laboratories.



Manufactured under license under U.S. Patent #'s: 5,451,942; 5,956,674; 5,974,380; 5,978,762; 6,226,616; 6,487,535; 7,392,195; 7,272,567; 7,333,929; 7,212,872 & other U.S. and worldwide patents issued & pending. DTS and the Symbol are registered trademarks, & DTS-HD, and DTS-HD Master Audio | Essential and the DTS logos are trademarks of DTS, Inc. Product includes software. © DTS, Inc. All Rights Reserved.



DivX®, DivX Certified® and associated logos are registered trademarks of DivX, Inc. and are used under license.

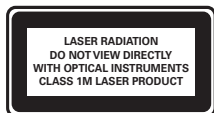
DivX Ultra® Certified to play DivX® video with advanced features and premium content.

ABOUT DIVX VIDEO: DivX® is a digital video format created by DivX, Inc. This is an official DivX Certified device that plays DivX video. Visit www.divx.com for more information and software tools to convert your files into DivX video.

ABOUT DIVX VIDEO-ON-DEMAND: This DivX Certified® device must be registered in order to play DivX Video-on-Demand (VOD) content. To generate the registration code, locate the DivX VOD section in your device setup menu. Go to vod.divx.com with this code to complete the registration process and learn more about DivX VOD.



HDMI, and HDMI logo and High-Definition Multimedia Interface are trademarks or registered trademarks of HDMI licensing LLC.



2 Important

Read and understand all instructions before you use your home theater. If damage is caused by failure to follow instructions, the warranty does not apply.

Safety

Risk of electric shock or fire!

- Never expose the product and accessories to rain or water. Never place liquid containers, such as vases, near the product. If liquids are spilt on or into the product, disconnect it from the power outlet immediately. Contact Philips Consumer Care to have the product checked before use.
- Never place the product and accessories near naked flames or other heat sources, including direct sunlight.
- Never insert objects into the ventilation slots or other openings on the product.
- Where the mains plug or an appliance coupler is used as the disconnect device, the disconnect device shall remain readily operable.
- Disconnect the product from the power outlet before lightning storms.
- When you disconnect the power cord, always pull the plug, never the cable.

Risk of short circuit or fire!

- Before you connect the product to the power outlet, ensure that the power voltage matches the value printed on the back or bottom of the product. Never connect the product to the power outlet if the voltage is different.

Risk of injury or damage to the home theater!

- For wall-mountable products, use only the supplied wall mount bracket. Secure the wall mount to a wall that can support the combined weight of the product and the wall mount. Koninklijke Philips Electronics N.V. bears no responsibility for improper wall mounting that results in accident, injury or damage.

- For speakers with stands, use only the supplied stands. Secure the stands to the speakers tightly. Place the assembled stands on flat, level surfaces that can support the combined weight of the speaker and stand.
- Never place the product or any objects on power cords or on other electrical equipment.
- If the product is transported in temperatures below 5°C, unpack the product and wait until its temperature matches room temperature before connecting it to the power outlet.
- Visible and invisible laser radiation when open. Avoid exposure to beam.
- Do not touch the disc optical lens inside the disc compartment.

Risk of overheating!

- Never install this product in a confined space. Always leave a space of at least four inches around the product for ventilation. Ensure curtains or other objects never cover the ventilation slots on the product.

Risk of contamination!

- Do not mix batteries (old and new or carbon and alkaline, etc.).
- Remove batteries if they are exhausted or if the remote control is not to be used for a long time.
- Batteries contain chemical substances, they should be disposed of properly.

Product care

- Do not insert any objects other than discs into the disc compartment.
- Do not insert warped or cracked discs into the disc compartment.
- Remove discs from the disc compartment if you are not using the product for an extended period of time.
- Only use microfiber cloth to clean the product.

Health warning

If you or your family has a history of epilepsy or photosensitive seizures, consult a medical professional before exposing yourself to flashing light sources, rapid image sequences or 3D viewing.

To avoid discomfort such as dizziness, headache or disorientation, we recommend not watching 3D for extended periods of time. If you experience any discomfort, stop watching 3D and do not immediately engage in any potentially hazardous activity (for example driving a car) until your symptoms have disappeared. If symptoms persist, do not resume watching 3D without consulting a medical professional first. Parents should monitor their children during 3D viewing and ensure they do not experience any discomfort as mentioned above. Watching 3D is not recommended for children under six years of age as their visual system is not fully developed yet.

Disposal of your old product and batteries



Your product is designed and manufactured with high quality materials and components, which can be recycled and reused.



When this crossed-out wheeled bin symbol is attached to a product it means that the product is covered by the European Directive 2002/96/EC. Please inform yourself about the local separate collection system for electrical and electronic products.

Please act according to your local rules and do not dispose of your old products with your normal household waste.

Correct disposal of your old product helps to prevent potential negative consequences for the environment and human health.



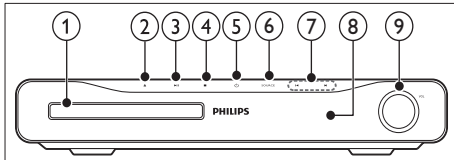
Your product contains batteries covered by the European Directive 2006/66/EC, which cannot be disposed with normal household waste.

Please inform yourself about the local rules on separate collection of batteries because correct disposal helps to prevent negative consequences for the environmental and human health.

3 Your home theater

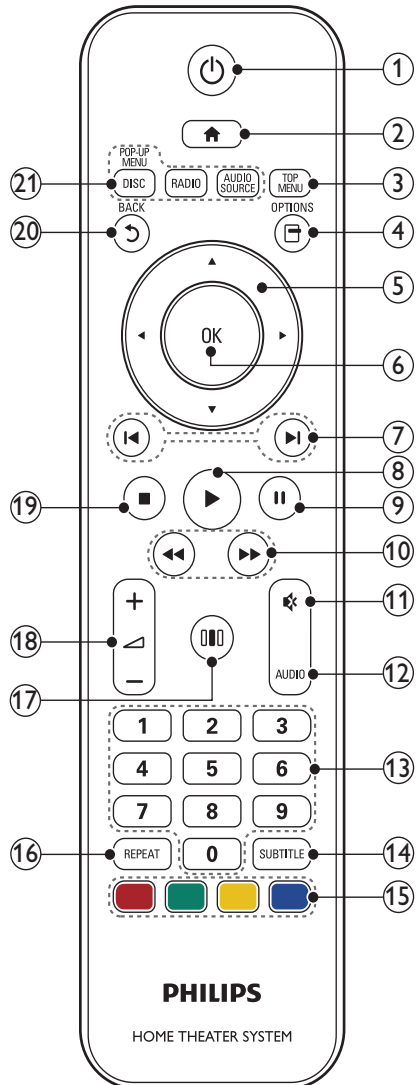
Congratulations on your purchase, and welcome to Philips! To fully benefit from the support that Philips offers, register your home theater at www.philips.com/welcome.

Main unit



- ① Disc compartment
- ② ▲ (Open/Close)
Opens or closes the disc compartment.
- ③ ►|| (Play/Pause)
Starts, pauses or resumes play.
- ④ ■ (Stop)
 - Stops play.
 - In radio mode, erases the current preset radio station.
- ⑤ ⏻ (Standby-On)
Switches the home theater on or to standby.
- ⑥ SOURCE
Selects an audio/video source for the home theater.
- ⑦ ◀▶ (Previous/Next)
 - Skips to the previous or next track, chapter or file.
 - In radio mode, selects a preset radio station.
- ⑧ Display panel
- ⑨ Volume control wheel

Remote control



- ① ⏻ (Standby-On)
 - Switches the home theater on or to standby.
 - When EasyLink is enabled, press and hold for at least three seconds to switch all connected HDMI CEC compliant devices to standby.

- ② **🏠 (Home)**
Accesses the home menu.
- ③ **TOP MENU**
Accesses the main menu of a video disc.
- ④ **☐ (Options)**
 - Accesses more play options during playback.
 - In radio mode, programs radio stations.
- ⑤ **Navigation buttons**
 - Navigates menus.
 - In radio mode, press left or right to start auto search.
- ⑥ **OK**
Confirms an entry or selection.
- ⑦ **◀ / ▶ (Previous/Next)**
 - Skips to the previous or next track, chapter or file.
 - In radio mode, selects a preset radio station.
- ⑧ **▶(Play)**
Starts or resumes play.
- ⑨ **⏸ (Pause)**
Pauses play.
- ⑩ **◀◀ / ▶▶ (Fast Backward / Fast Forward)**
Fast backwards or fast forwards. Press repeatedly to change the search speed.
- ⑪ **🔇 (Mute)**
Mutes or restores volume.
- ⑫ **AUDIO**
In video mode, toggle between audio languages.
In radio mode, toggle between stereo and mono.
- ⑬ **Numeric buttons**
Selects an item to play.
- ⑭ **SUBTITLE**
Selects subtitle language for video.
- ⑮ **Color buttons**
Blu-ray discs only: Select a task or option.
- ⑯ **REPEAT**
Selects or turns off repeat mode.
- ⑰ **🔊 (Sound options)**
Accesses or exits various sound options.
- ⑱ **🔊 +/- (Volume)**
Increases or decreases volume.
- ⑲ **■ (Stop)**
 - Stops play.
 - Press and hold to eject the disc or open the disc compartment.
 - In radio mode, erases the current preset radio station.
- ⑳ **↶ (Back)**
Returns to a previous menu screen.
- ㉑ **Source buttons**
 - **DISC / POP-UP MENU**: Switch to disc source. Access the disc menu of a DVD disc or the pop-up menu of a Blu-ray disc.
 - **RADIO** : Switches to FM radio.
 - **AUDIO SOURCE** : Selects an audio input source.

4 Connect your home theater

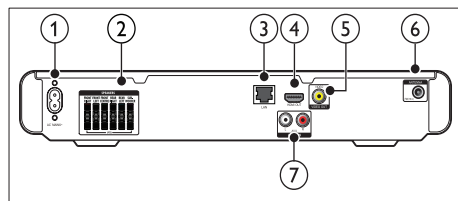
This section helps you connect your home theater to a TV and other devices. The basic connections of the home theater with its accessories are provided in the Quick Start. For a comprehensive interactive guide, see www.connectivityguide.philips.com.

Note

- Refer to the type plate at the back or bottom of the product for identification and supply ratings.
- Before you make or change any connections, ensure that all devices are disconnected from the power outlet.

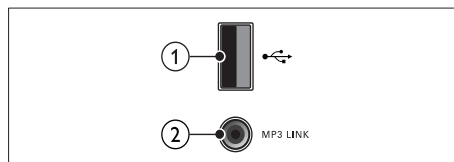
Connectors

Back connectors



- 1 AC MAINS~**
Connects to the power supply.
- 2 SPEAKERS**
Connects to the supplied speakers and subwoofer.
- 3 LAN**
Connects to the LAN input on a broadband modem or router.
- 4 HDMI OUT**
Connects to the HDMI input on the TV.
- 5 VIDEO OUT**
Connects to the composite video input on the TV.
- 6 FM ANTENNA**
Connects the FM antenna for radio reception.
- 7 AUDIO IN**
Connects to the analog audio output on the TV or an analog device.

Side connectors



- 1 USB**
Audio, video or picture input from a USB storage device.
- 2 MP3 LINK**
Audio input from an MP3 player.

Connect to the TV

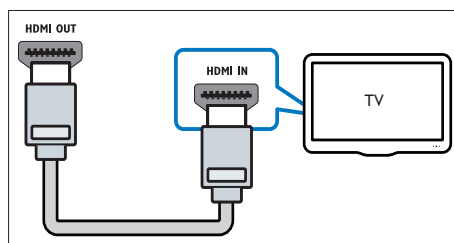
Connect your home theater directly to a TV through one of the following connectors (from highest to basic quality video):

- 1 HDMI**
- 2 Composite video**

Option 1: Connect to the TV through HDMI

Note

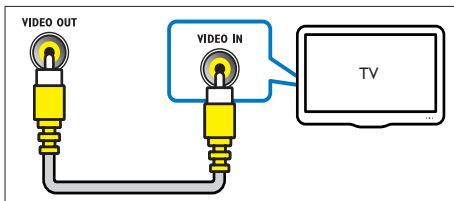
- If the HDTV has a DVI connector, connect using an HDMI/DVI adapter.
- If the TV supports EasyLink HDMI CEC, control the home theater and TV with one remote control (see 'Use Philips EasyLink' on page 14).



Option 2: Connect to the TV through composite video (CVBS)

Note

- The composite video cable or connector might be labeled **AV IN**, **VIDEO IN**, **COMPOSITE** or **BASEBAND**.



Connect audio from TV or other devices

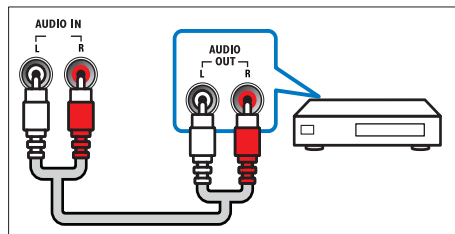
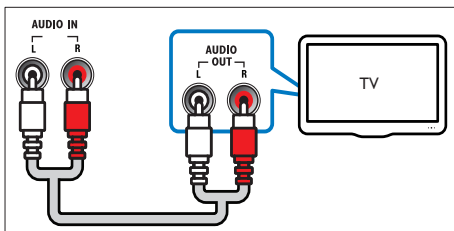
Use your home theater to play audio from the TV or other device such as a cable box.

Tip

- Press **AUDIO SOURCE** to select the audio output of your connection.

Option 1: Connect audio through analog audio cables

(Cable not supplied)



Connect to the internet

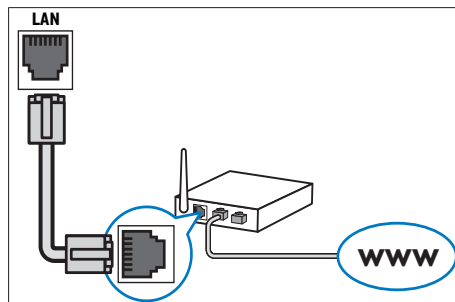
Connect the home theater to the internet network and enjoy:

- **BD-Live applications** : access to some exclusive services from the BD-Live enabled Blu-ray discs (see 'Access BD-Live on Blu-ray' on page 11).
- **Software update** : update the software of the home theater through the network (see 'Update software from the network' on page 17).

What you need:

- A network router (with DHCP enabled).
- A network cable (RJ45 straight cable).
- For BD-Live application and software update, make sure that the network router has access to the Internet and the firewall is disabled.

(Cable not supplied)



Set up network

- 1 Connect the home theater to a broadband modem or router (see 'Connect to the internet' on page 8).
- 2 Turn on your TV and switch to the correct source for the home theater.
- 3 Press **⬆** (**Home**).
- 4 Select **[Setup]**, then press **OK**.
- 5 Select **[Network]** > **[Network Installation]**, then press **OK**.
- 6 Select **[Wired (Ethernet)]**, then press **OK**.
- 7 Select **[Auto (recommended)]** or **[Manual (advanced)]**, then press **OK**.
- 8 Follow the instructions on the TV to complete the setup.
 - ↳ The home theater connects to the internet. If connection fails, select **[Retry]**, then press **OK**.
- 9 Select **[Finish]**, then press **OK** to exit.



Caution

- Familiarize yourself with the network router, media server software and networking principles before attempting to connect the home theater to a computer network. If necessary, read documentation accompanying network components. Philips is not responsible for lost, damaged or corrupt data.

5 Use your home theater

This section helps you use the home theater to play media from a wide range of sources.

Before you start

Check that you:

- Make the necessary connections and complete the setup as described in the Quick Start.
- Switch the TV to the correct source for the home theater.

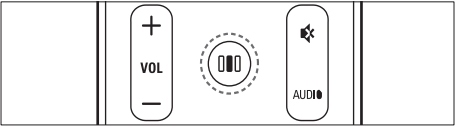
Access the home menu

The home menu gives you easy access to connected devices, audio and video settings, and other features.

- 1 Press **⬆** (**Home**).
 - ↳ The home menu appears.
- 2 Press the **Navigation buttons** and **OK** to select the following:
 - **[play Disc]** : Starts disc play.
 - **[browse USB]** : Accesses the content browser of the connected USB storage device.
 - **[Setup]** : Accesses menus to change picture, sound and other settings.

Choose your sound

This section helps you choose the ideal sound for your video or music.



- 1 Press **[Sound options]**.
- 2 Press the **Navigation buttons** (left/right) to access the sound options.

Sound experience	Description
SOUND	Selects a sound mode.
SURROUND	Selects a surround sound or stereo sound.
TREBLE	Adjusts the high frequency output.
MID	Adjusts the middle frequency output.
BASS	Adjusts the low frequency output.
AUDIO SYNC	Delays the audio to match the video.

- 3 Select an option, then press **OK**.
- 4 Press **[Back]** to exit.
If you do not press a button within five seconds, it automatically exits the menu.

Change sound mode

Select predefined sound modes to suit your video or music.

- 1 Press **[Sound options]**.
- 2 Select **SOUND**, then press **OK**.
- 3 Press the **Navigation buttons** (up/down) to select the following settings:
 - **ACTION/ROCK** : Enhanced low and high-range. Ideal for action movies and rock or pop music.
 - **DRAMA/JAZZ** : Clear mid and high-range. Ideal for drama movies and jazz music.
 - **CONCERT/CLASSIC**: Neutral sound. Ideal for live concerts and classical music.

- **SPORTS** : Moderate mid-range and surround effects for clear vocals and the atmosphere of a live sport venue.

- 4 Press **OK** to confirm your choice.

Change surround sound mode

Experience an immersive audio experience with surround sound modes.

- 1 Press **[Sound options]**.
- 2 Select **SURROUND**, then press **OK**.
- 3 Press the **Navigation buttons** (up/down) to select the following settings:
 - **5CH STEREO** : Enhances the stereo channel output by duplicating the sound output to the center and rear speakers. Ideal for party music.
 - **MULTI-CHANNEL/Dolby PLII** : Immersive multi-channel sound for an enhanced movie experience.
 - **STEREO** : Two-channel stereo sound. Ideal for listening to music.
- 4 Press **OK** to confirm your choice.

Change treble, mid and bass

Change the high frequency (treble), mid frequency (mid) and low frequency (bass) settings of the home theater to suit your video or music.

- 1 Press **[Sound options]**.
- 2 Select **TREBLE**, **MID** or **BASS**, then press **OK**.
- 3 Press the **Navigation buttons** (up/down) to adjust the frequency level.
- 4 Press **OK** to confirm.

Synchronize audio with video

If the audio and video are not synchronized, you can delay the audio to match the video.

- 1 Press **[Sound options]**.
- 2 Select **AUDIO SYNC**, then press **OK**.
- 3 Press the **Navigation buttons** (up/down) to sync the audio with the video.
- 4 Press **OK** to confirm.

Note

- Audio Lip Sync is only available when you play a video.

Play a disc

The home theater can play a wide variety of discs, including video, audio and mixed media (for example, a CD-R that contains JPEG pictures and MP3 music).

- 1 Insert a disc into the home theater.
- 2 Press **DISC**, or select [**play Disc**] in the home menu and press **OK**.
 - ↳ The disc plays or the disc main menu appears.
- 3 Press the following buttons to control play:

Button	Action
Navigation buttons	Navigate menus.
OK	Confirms an entry or selection.
▶(Play)	Starts or resumes play.
⏏	Pauses play.
■	Stops play.
◀ / ▶	Skips to the previous or next track, chapter or file.
◀◀ / ▶▶	Fast backwards or fast forwards. Press repeatedly to change the search speed.
Navigation buttons (up/down)	Rotates the picture counter-clockwise or clockwise.
SUBTITLE	Selects subtitle language for video.
DISC	Accesses or exits the disc menu.
⏏ (Options)	Accesses more play options during playback.

Use Bonus View on Blu-ray

Blu-ray discs that support the Bonus View feature (also known as Picture-In-Picture) allow you to view special content such as a director's commentary while watching the main feature.

- 1 If necessary, enable BonusView (or Picture-In-Picture) in the Blu-ray disc menu.
- 2 During playback of the main feature, press **⏏ (Options)**.
 - ↳ The options menu is displayed.

- 3 Select [**PIP Selection**] > [**PIP**], then press **OK**.
 - ↳ PIP options [1]/[2] depend on the video contents.
 - ↳ The picture-in-picture video appears in a small window.
- 4 Select [**2nd Audio Language**] or [**2nd Subtitle Language**], then press **OK**.
- 5 Select the language to play, then press **OK**.



Note

- To turn off the Bonus View (Picture-in-Picture), press **⏏ (Options)**, select [**PIP Selection**] > [**Off**], then press **OK**.

Access BD-Live on Blu-ray

BD-Live enabled Blu-ray discs include exclusive services such as movies and other online bonuses.

- 1 Prepare the internet connection and set up the network (see 'Connect to the internet' on page 8).
- 2 Connect the USB storage device to the home theater.
- 3 Select the BD-Live icon in the disc menu, then press **OK**.
 - ↳ BD-Live starts to load. The loading time depends on the disc and your internet connection.
- 4 Press the **Navigation buttons** to navigate BD-Live.
- 5 Press **OK** to select an item.



Note

- The range of BD-Live services depends on the disc.
- When you use BD-Live, data on the disc and home theater are accessed by the content provider.
- Use a USB storage device with at least 1GB of free space to store the downloaded files.
- If there is insufficient memory to download BD-Live content, clear memory space.

Play 3D video

Your home theater can play 3D videos on 3D TVs.

Before you start, make sure that:

- your TV is a 3D TV, and is connected to your home theater through HDMI,
- your disc is a Blu-ray 3D disc, and
- you have 3D glasses that are compatible with your 3D TV.

To play 3D video

- 1 Insert a Blu-ray 3D disc into your home theater.
↳ YourTV switches to the correct HDMI source, and the disc plays automatically.
- 2 If the disc does not play automatically, press **DISC** or select **[play Disc]** in the home menu, and then press **OK**.
- 3 Press the play buttons to control play. When you search forward or backward, and in some other play modes, the video displays in 2D. It returns to 3D when you play normally again.
- 4 Put on the 3D glasses to enjoy the 3D effects.

Play 3D discs in 2D

- 1 Press **⬆** (**Home**).
- 2 Select **[Setup] > [Video] > [Blu-ray 3D video] > [Off]**.
- 3 Press **OK**.
- 4 Play your Blu-ray 3D disc.
↳ The 3D video is displayed in 2D.

Play from a USB storage device

The home theater is fitted with a USB connector that allows you to view pictures, listen to music or watch movies stored on a USB storage device.

- 1 Connect the USB storage device to the home theater.
- 2 Press **⬆** (**Home**).
↳ The home menu appears.
- 3 Select **[browse USB]**, then press **OK**.
↳ A content browser appears.
- 4 Select a file, then press **OK**.
- 5 Press the playback buttons to control play (see 'Play a disc' on page 11).



Note

- If the USB storage device does not fit into the connector, use a USB extension cable.
- The home theater does not support digital cameras that need a computer program to display photos.
- The USB storage device must be Mass Storage Class compliant, and formatted to FAT, DOS or NTFS file system.

More play features for disc or USB

Several advanced features are available for video or picture playback from a disc or USB storage device.

Use video options

Access several useful features while viewing video.



Note


- Available video options depend on the video source.

- 1 Press **⌂** (**Options**).
↳ The video options menu appears.
- 2 Press the **Navigation buttons** and **OK** to select and adjust:
 - **[Audio Language]** : Selects audio language for video.
 - **[Subtitle Language]** : Selects subtitle language for video.
 - **[Subtitle Shift]** : Adjusts the subtitle position on the screen.
 - **[Info]** : Displays information about what is playing.
 - **[Character Set]** : Selects a character set that supports the DivX subtitle.
 - **[Time Search]** : Skips to a specific part of the video by entering the time of the scene.
 - **[2nd Audio Language]** : Selects the second audio language to play.
 - **[2nd Subtitle Language]** : Selects the second subtitle language to play.
 - **[Titles]** : Selects a specific title.
 - **[Chapters]** : Selects a specific chapter.
 - **[Angle List]** : Selects a different camera angle.
 - **[Menus]** : Displays the disc menu.

- **[PIP Selection]** : Displays Picture-in-Picture window.
- **[Zoom]** : Zooms into a video scene or picture. Press the **Navigation buttons** (left/right) to select a zoom factor.
- **[Repeat]** : Repeats a chapter or title.
- **[Repeat A-B]** : Marks two points within a chapter or track for repeat play, or turns off repeat mode.
- **[Picture Settings]** : Selects a predefined color setting.


Use picture options

Access several useful features while viewing pictures.

- 1 Press  (**Options**).
↳ The pictures options menu appears.
- 2 Press the **Navigation buttons** and **OK** to select and adjust:
 - **[Rotate +90]** : Rotates the picture 90 degree clockwise.
 - **[Rotate -90]** : Rotates the picture 90 degree counter-clockwise.
 - **[Zoom]** : Zooms into a video scene or picture. Press the **Navigation buttons** (left/right) to select a zoom factor.
 - **[Info]** : Displays picture information.
 - **[Duration per slide]** : Sets the display speed for each picture in a slide show.
 - **[Slide Animation]** : Selects animation for the slide show.
 - **[Picture Settings]** : Selects a predefined color setting.
 - **[Repeat]** : Repeats a selected folder.




Use audio options

Access several useful features while audio is played.

- 1 Press  (**Options**) repeatedly to cycle through the following functions:
 - **REPEAT TRACK** : Repeats the current track.
 - **REPEAT DISC** : Repeats all the tracks on the disc or folder.
 - **REPEAT RANDOM** : Plays audio tracks in random order.
 - **REPEAT OFF** : Turns off repeat mode.


Play a musical slideshow




Play music and pictures simultaneously to create a musical slideshow.

- 1 Select a music track, then press **OK**.
- 2 Press  (**Back**) and go to the picture folder.
- 3 Select a picture, then press **OK** to start slideshow.
- 4 Press  to stop slideshow.
- 5 Press  again to stop music.

Play from radio

The home theater can store up to 40 radio stations.

- 1 Check that the FM antenna is connected.
- 2 Press **RADIO**.
↳ "AUTO INSTALL...PRESS PLAY" appears on the display panel if you have not installed any radio stations. Press  (**Play**).
- 3 Press the following buttons to control play:

Button	Action
	Selects a preset radio station.
Navigation buttons (left/right)	Searches for a radio station.
Navigation buttons (up/down)	Fine tunes a radio frequency.
	Press and hold to erase the preset radio station. Press to stop the installation of radio stations.
 (Options)	Manual: Press once to access program mode, and press again to store the radio station. Automatic: Press and hold for five seconds to reinstall radio stations.
AUDIO	Toggles between stereo and mono sound.



Note

- AM and digital radio are not supported.
- If no stereo signal is detected, or if fewer than five stations are found, you are prompted to install the radio stations again.
- For the best reception, place the antenna away from the TV or other sources of radiation.

Change tuning grid

In some countries, you can switch the FM tuning grid between 50 kHz and 100 kHz. Changing the tuning grid erases all preset radio stations.

- 1 Press **RADIO**.
- 2 Press **■** (Stop).
- 3 Press and hold **▶** (Play) to toggle between 100 kHz and 50 kHz frequency.

Play audio from TV or other devices

Press **AUDIO SOURCE** repeatedly to select the audio output of the connected device.

Play from an MP3 player

Connect and play audio files from an MP3 player or other external audio devices.

- 1 Connect the MP3 player to the home theater.
- 2 Press **AUDIO SOURCE** repeatedly until 'MP3 LINK' appears on the display panel.
- 3 Press the buttons on the MP3 player to select and play audio files.

Use Philips EasyLink

The home theater supports Philips EasyLink, which uses the HDMI CEC (Consumer Electronics Control) protocol. EasyLink-compliant devices that are connected through HDMI connectors can be controlled by a single remote control.

Note

- Philips does not guarantee 100% interoperability with all HDMI CEC devices.

- 1 Switch on the HDMI CEC operations on the TV and other connected devices. See the manual of the TV or other devices for details.
- 2 Press **⬆** (Home).
- 3 Select **[Setup]**, then press **OK**.
- 4 Select **[EasyLink]** > **[EasyLink]**, then press **OK**.
- 5 Select **[On]**, then press **OK**.
- 6 You can now enjoy the following Philips EasyLink controls.

One-touch play

When you play a disc, the TV automatically switches to the correct channel.

One-touch standby

When you press and hold **⏻** (Standby) on the remote control, the home theater and all the connected HDMI CEC devices (if they support one-touch standby) switch to standby mode simultaneously.

System Audio Control

When you play a device that has its audio output routed to the home theater, the home theater switches to the corresponding audio source automatically.

To use one-touch audio, enable this feature and follow the instructions on the TV to map the connected devices correctly to the audio input jacks of the home theater.

Audio Input Mapping

Updates audio input mapping if there are new devices connected.




6 Change settings

This section helps you to change the settings of your home theater.

Caution

- Most of the settings are already configured with the best value for the home theater. Unless you have a specific reason to change a setting, it is best to leave it at the default value.


Access the setup menu

- 1 Press  (Home).
- 2 Select **[Setup]**, then press **OK**.
→ The setup menu appears.
- 3 Select a setup menu, then press **OK**.
See the following sections for information about how to change the settings of your home theater.
- 4 Press  (**Back**) to return to the previous menu, or press  to exit.

Note

- You cannot change a setting that is grayed out.

Change video settings

- 1 Press  (Home).
- 2 Select **[Setup]**, then press **OK**.
- 3 Select **[Video]**, then press **OK**.
- 4 Select and adjust the following settings:
 - **[TV Display]** : Selects a picture display format to fit the TV screen.
 - **[HDMI Video]** : Selects the HDMI video resolution.
 - **[HDMI Deep Color]** : Displays colors with more shades and hues when the video content is recorded in Deep Color and the TV supports this feature.


- **[Blu-ray 3D video]** : Selects the 3-dimensional video output when you play a 3D video on your home theater. The home theater must be connected to a 3D TV through HDMI.
- **[Picture Settings]** : Selects a predefined color setting.

- 5 Press **OK** to confirm your choice.

Note

- The best setting is automatically selected for the TV. If you need to change the setting, ensure that the TV supports the new setting.
- For settings related to HDMI, the TV must be connected through HDMI.

Change audio settings

- 1 Press  (Home).
- 2 Select **[Setup]**, then press **OK**.
- 3 Select **[Audio]**, then press **OK**.
- 4 Select and adjust the following settings:
 - **[Night Mode]** : Selects quiet or full dynamic sound. Night mode decreases the volume of loud sounds and increases the volume of soft sounds such as speech.
 - **[HDMI Audio]** : Selects HDMI audio format or disables HDMI audio output for the TV.
 - **[Speaker Setup]** : Sets the volume level and distance of each speaker to obtain the best possible surround sound based on your room setup.
- 5 Press **OK** to confirm your choice.

Note

- For settings related to HDMI, the TV must be connected through HDMI.
- Night mode is available for Dolby encoded DVD and Blu-ray discs (for models support Blu-ray playback).

Set up network

- 1 Press **⬆** (Home).
- 2 Select **[Setup]**, then press **OK**.
- 3 Select **[Network]**, then press **OK**.
- 4 Select and adjust the following settings:
 - **[Network Installation]** : Starts wired (Ethernet) setup. Follow the instructions to set up the network connection.
 - **[View Network Settings]** : Displays the current network settings.
- 5 Press **OK** to confirm your choice.

Set up EasyLink

- 1 Press **⬆** (Home).
- 2 Select **[Setup]**, then press **OK**.
- 3 Select **[EasyLink]**, then press **OK**.
- 4 Select and adjust the following settings:
 - **[EasyLink]** : Enables or disables EasyLink.
 - **[One Touch Play]** : Enables or disables One Touch Play.

If enabled, you can use the remote control to start disc play in the home theater and the TV switches automatically to the correct channel.
 - **[One Touch Standby]** : Enables or disables One Touch Standby.

If enabled, the home theater can be switched off to standby by a remote control from the TV or other connected HDMI CEC devices.
 - **[System Audio Control]** : Enables or disables System audio control.

If enabled, follow the instructions on the TV to map the connected devices correctly to the audio connectors of the home theater. The home theater switches automatically to the audio source of the connected device.
 - **[Audio Input Mapping]** : Updates audio input mapping if there are new devices connected.
- 5 Press **OK** to confirm your choice.

Note

- The connected devices must be connected through HDMI and switched on.

Change preference settings

- 1 Press **⬆** (Home).
- 2 Select **[Setup]**, then press **OK**.
- 3 Select **[Preference]**, then press **OK**.
- 4 Select and adjust the following settings:
 - **[Menu language]** : Selects the on-screen display menu language.
 - **[Audio]** : Selects audio language for video.
 - **[Subtitle]** : Selects subtitle language for video.
 - **[Disc Menu]** : Selects menu language for video disc.
 - **[Parental Control]** : Restricts access to discs that are recorded with ratings. To play all discs irrespective of the rating, select level '8'.
 - **[Screen Saver]** : Enables or disables screen saver mode. If enabled, the screen enters idle mode after 10 minutes of inactivity (for example, in pause or stop mode).
 - **[Auto Subtitle Shift]** : Enables or disables shift subtitle. If enabled, it adjusts the subtitle position automatically to fit the TV screen.
 - **[Change Password]** : Sets or changes a PIN code to play a restricted disc. Enter '0000' if you do not have a PIN or if you have forgotten your PIN.
 - **[Display Panel]** : Changes the brightness of the display panel.
 - **[Auto Standby]** : Enables or disables auto standby. If enabled, the home theater switches to standby after 30 minutes of inactivity (for example, in pause or stop mode).
 - **[VCD PBC]** : Displays or skips the content menu for VCD and SVCD discs.
 - **[Sleep Timer]** : Sets a sleep timer to switch the home theater to standby after a specific time.
- 5 Press **OK** to confirm your choice.

Note

- If your preferred disc language is not available, you can select **[Other]** from the list and enter the 4-digit language code which can be found at the back of this manual.
- If you select a language that is not available on a disc, the home theater uses the default language of the disc.

Change advanced settings

- 1 Press **▲ (Home)**.
- 2 Select **[Setup]**, then press **OK**.
- 3 Select **[Advanced]**, then press **OK**.
- 4 Select and adjust the following settings:
 - **[BD-Live Security]** : Restricts or allows access to BD-Live.
 - **[Enhanced Audio]** : Enables or disables the audio post processing at the speaker output.
 - **[Software Update]** : Selects to update software from the network or from USB storage device.
 - **[Clear memory]** : Clears local memory, delete the BD-Live files that you previously downloaded. If using an USB storage device, the local storage folder is 'BUDA'.
 - **[DivX® VOD Code]** : Displays the DivX VOD registration code for the home theater.
 - **[Version Info.]** : Displays the software version for the home theater.
 - **[Restore default settings]** : Resets the home theater to the default settings programmed at the factory.
- 5 Press **OK** to confirm your choice.

Note

- You cannot restrict internet access on commercial Blu-ray discs.
- Before you purchase DivX videos and play them on the home theater, register the home theater on www.divx.com using the DivX VOD code.
- You cannot reset parental control setting to its default value.

7 Update software

To check for new updates, compare the current software version of your home theater with the latest software version (if available) on the Philips web site.

Check software version

- 1 Press **▲ (Home)**.
- 2 Select **[Setup]**, then press **OK**.
- 3 Select **[Advanced]** > **[Version Info.]**, then press **OK**.
 - ↳ The software version is displayed.

Update software from the network

- 1 Prepare the internet connection (see 'Connect to the internet' on page 8).
- 2 Press **▲ (Home)** and select **[Setup]**.
- 3 Select **[Advanced]** > **[Software Update]** > **[Network]**.
 - ↳ If an upgrade media is detected, you are prompted to start or cancel the update.
- 4 Follow the instruction on the TV to confirm the update.
 - ↳ When complete, the home theater automatically switches off and on again.
 - If not, disconnect the power cord for a few seconds and then reconnect it.

Note

- If the home theater is unable to connect to the Philips server, press **▲ (Home)**, select **[Setup]** > **[Network]** > **[Network Installation]** to set up the network.

Update software from a USB

- 1 Check for the latest software version on www.philips.com/support.
 - Search for your model and click on 'software and drivers'.
- 2 Create a folder named 'UPG' in the root directory of your USB storage device.
- 3 Download the software into the 'UPG' folder of the USB storage device.
- 4 Unzip the software in the 'UPG' folder.
- 5 Connect the USB storage device to the home theater.
- 6 Press **Home** and select **[Setup]**.
- 7 Select **[Advanced]** > **[Software Update]** > **[USB]**.
- 8 Follow the instructions on the TV to confirm the update.
 - ➔ When complete, the home theater automatically switches off and restarts.
 - If not, disconnect the power cord for a few seconds and then reconnect it.

Caution

- Do not turn off the power or remove the USB storage device when the software update is in progress because you might damage the home theater.

8 Product specifications

Note

- Specification and design are subject to change without notice.

Country	DVD	BD
Europe, United Kingdom		
Asia Pacific, Taiwan, Korea		
Latin America		
Australia, New Zealand		
Russia, India		
China		

Playback media

- BD-Video, DVD-Video, DVD+R/+RW, DVD-R/-RW, DVD+R/-R DL, CD-R/CD-RW, Audio CD, Video CD/SVCD, Picture CD, MP3-CD, WMA-CD, DivX (Ultra)-CD, USB flash drive.

Compression Format

- Audio: MP3, WMA, PCM
- Video: DivX Ultra, MPEG1, MPEG2, MPEG4, WMV SD
- Picture: PNG, GIF, JPEG

File Format

- Audio: .mp3, .wma
- Video: .avi, .divx, .mkv, .wmv, .asf, .mpg, .mpeg
- Picture: .jpg, .gif, .png

Amplifier

- Total output power: 800 W RMS (10% THD)
- Frequency response: 20 Hz-20 kHz / ± 3 dB
- Signal-to-noise ratio: > 65 dB (CCIR) / (A-weighted)
- Input sensitivity:
 - AUX: 500 mV
 - MP3 LINK: 250 mV

Video

- Signal system: PAL / NTSC
- HDMI output: 480i/576i, 480p/576p, 720p, 1080i, 1080p

Audio

- Sampling frequency:
 - MP3: 32 kHz, 44.1 kHz, 48 kHz
 - WMA: 44.1 kHz, 48 kHz
- Constant bit rate:
 - MP3: 112 kbps - 320 kbps
 - WMA: 48 kbps - 192 kbps

Radio

- Tuning range: FM 87.5-108 MHz (50 kHz)
- Signal-to-noise ratio: FM 55 dB
- Frequency response: FM 180 Hz-12.5 kHz / ± 3 dB

USB

- Compatibility: Hi-Speed USB (2.0)
- Class support: UMS (USB Mass Storage Class)
- File system: FAT16, FAT32, NTFS
- Maximum memory support: < 160GB

Main Unit

- Power supply:
 - India and Russia: 220-240V; ~ 50 Hz
 - Asia Pacific and Latin America: 110-127V/ 220-240V; ~ 50 -60 Hz
- Power consumption: 100 W
- Standby power consumption: ≤ 0.9 W
- Dimensions (WxHxD): 360 x 58 x 351 (mm)
- Weight: 3.22 kg

Subwoofer

- Total output power: 133 W RMS (10% THD)
- Impedance: 4 ohm
- Speaker drivers: 165 mm (6.5") woofer
- Frequency response: 40 Hz-150 Hz

- Dimensions (WxHxD): 123 x 309 x 369 (mm)
- Weight: 3.81 kg
- Cable length: 4 m

Speakers

- Total output power: 133 W RMS (10% THD) per channel
- System: full range satellite
- Speaker impedance: 4 ohm (center), 4 ohm (Front/Rear)
- Speaker drivers: 1 x 3" full range
- Frequency response: 150 Hz-20 kHz
- Dimensions (WxHxD):
 - Center: 161 x 92 x 95 (mm)
 - Speaker : 95 x 161 x 87 (mm)
 - Tall speaker (For HTS3580 only): 254 x 1001 x 254 (mm)
- Weight:
 - Center: 0.77 kg
 - Speaker: 0.56 kg/each
 - Tall speaker (For HTS3580 only): 3.38 kg/each
- Cable length:
 - Center: 3 m
 - Front: 4 m
 - Rear: 10 m

Laser Specification

- Laser Type (Diode): InGaN/AlGaIn (BD), InGaAlP (DVD), A lGaAs (CD)
- Wave length: 405 +5nm/-5nm (BD), 650 +13nm/-10nm (DVD), 790 +15nm/-15nm (CD)
- Output power (Max. ratings): 20mW (BD), 7mW (DVD/CD)

9 Troubleshooting



Warning

- Risk of electric shock. Never remove the casing of the product.

To keep the warranty valid, never try to repair the product yourself.

If you have problems using this product, check the following points before you request service. If you still have a problem, register your product and get support at www.philips.com/welcome.

If you contact Philips, you will be asked for the model and serial number of your product. The model number and serial number are on the back or bottom of your product. Write the numbers here:

Model No. _____

Serial No. _____

Main unit

The buttons on this home theater do not work.

- Disconnect the home theater from the power outlet for a few minutes, then reconnect.

Picture

No picture.

- Ensure that the TV is switched to the correct source for the home theater.

No picture on HDMI connection.

- Change the HDMI video setting or wait for 15 seconds for auto recover.
- Check if the HDMI cable is faulty. Replace with a new HDMI cable.

No high-definition video signal on the TV.

- Ensure that the disc contains high-definition video.
- Ensure that the TV supports high-definition video.

Sound

No sound.

- Ensure that the audio cables are connected and select the correct input source (for example, **AUDIO SOURCE**) for the device you want to play.

No sound on HDMI connection.

- You might not hear any sound if the connected device is not HDCP (High-bandwidth Digital Content Protection) compliant or only DVI compatible. Use an analog or digital audio connection.
- Ensure that the **[HDMI Audio]** is enabled.

No sound from TV program.

- Connect an audio cable from the audio input on the home theater to the audio output on the TV, then press **AUDIO SOURCE** repeatedly to select the correct audio source.

Distorted sound or echo.

- Ensure that the TV volume is muted or set to minimum if you are playing audio through the home theater.

Audio and video are not synchronized.

- 1) Press **[Audio Sync]** (Sound options). 2) Press the **Navigation buttons** (left/right) repeatedly until **AUDIO SYNC** is displayed, then press **OK**. 3) Press the **Navigation buttons** (up/down) to sync the audio with the video.

Play

Disc cannot be played.

- Clean the disc.
- Ensure that the home theater supports the disc (see 'Product specifications' on page 18).
- Ensure that the home theater supports the region code of the disc.
- For DVD±RW or DVD±R, ensure that the disc is finalized.

DivX video files cannot be played.

- Ensure that the DivX file is encoded according to the 'Home Theater Profile' with the DivX encoder.
- Ensure that the DivX video file is complete.

DivX subtitles do not display correctly.

- Ensure that the subtitle file name is the same as the movie file name.
- Select the correct character set: 1) Press **[Options]**. 2) Select **[Character Set]**. 3) Select the supported character set. 4) Press **OK**.

The contents of a USB storage device cannot be read.

- Ensure that the format of the USB storage device is compatible with the home theater (see 'Product specifications' on page 18).

- Ensure that the USB storage device is formatted with a file system that is supported by the home theater.

'No entry' or 'x' sign appears on the TV.

- The operation is not possible.

EasyLink feature does not work.

- Ensure that the home theater is connected to a Philips brand EasyLink TV and that EasyLink is on.

I do not want my home theater to be switched on when I switch on my TV.

- This is the correct behavior for Philips EasyLink (HDMI-CEC). To make the home theater work independently, switch off EasyLink.

I cannot access BD-Live features.

- Check the network connection or ensure that the network has been set (see 'Set up network' on page 9) up.
- Clear memory storage. (see 'Change advanced settings' on page 17)
- Ensure that the Blu-ray disc supports BD-Live feature.

My 3D video plays in 2D mode.

- Ensure that your home theater is connected to your 3D TV through HDMI.
- Ensure that your disc is a Blu-ray 3D disc.
- Ensure that the **[Blu-ray 3D video]** setting is turned on.

I see black video on my TV screen.

- Ensure that your home theater is connected to the TV through HDMI.
- Switch to the correct HDMI source on your TV.

10 Index

3

3D video	12
----------	----

A

amplifier	18
audio	
connection	8
language	16
settings	15
synchronize with video	10
audio input mapping	14, 16

B

BD-Live	
access	11
set up	9
Bonus View	11

C

care	4
change settings	15
chapter	12
connect	
audio from TV	8, 14
guide	7
other devices	8
TV	7
connectors	7
contact us	20

D

disc	
play	11
supported discs	18
disposal of your product	4
DivX	
character set	12

E

EasyLink	
settings	14, 16

F

file formats	18
--------------	----

H

HDMI CEC (see Easylink)	14
-------------------------	----

I	
Internet	
BD-Live	11

L	
language	
audio	12, 16
disc menu	16
on-screen display	16
subtitle	12, 16

M	
MP3	
play	14

N	
network	
set up	9

O	
one-touch play	14, 16
one-touch standby	14, 16
overview	
connectors	7
main unit	5
remote control	5

P	
password (PIN code)	16
picture	
options	13
rotate	13
slide show	13, 13
troubleshooting	20
picture-in-picture	
2nd audio language	11
2nd subtitle language	11
enable	11
play	
2D video	12
3D video	12
disc	11
MP3 player	14
options	11
radio	13
troubleshooting	20
USB storage device	12
product care	4
product specifications	18

R	
radio	
play	13

program	13
tune	13
recycle	4
region code	18
remote control	5
repeat	12, 11
rotate pictures	13

S	
safety	3
settings	
audio	15
EasyLink	16
parental control	16
preferences	16
slideshow	
animation	13
duration	13
play musical slideshow	13
software	
update	17
version	17
sound	
mode	10
surround	10
treble and bass	10
troubleshooting	20
subtitle	
language	12, 16
subtitle shift	12, 16
system audio control	14

T	
time search video	12
title	12
troubleshooting	20
TV	
audio from TV	8, 14
connect	7

U	
USB	
play	12
software update	18

V	
video	
options	12
synchronize with audio	10

W	
wireless	

Validez de la garantía

Todos los productos de la línea de audio y video Philips, se regirán por un año de garantía internacional (365 días), salvo para Chile donde los productos de las líneas CD Portable y RCR CD, los cuales se rigen por 6 meses de garantía (182 días)

Condiciones de la garantía

Esta garantía perderá su validez si:

- El defecto es causado por uso incorrecto o en desacuerdo con el manual de instrucciones
- El aparato sea modificado, violado por una persona no autorizada por Philips
- El producto esté funcionando con un suministro de energía (red eléctrica, batería, etc.) de características diferentes a las recomendadas en el manual de instrucciones
- El número de serie que identifica el producto se encuentre de forma adulterada.

Están excluidos de garantía,

- Los defectos que se generen debido al incumplimiento del manual de instrucciones del producto
- Los casos fortuitos o de la fuerza mayor, como aquellos causados por agentes de la naturaleza y accidentes, descargas eléctricas, señales de transmisión débiles.
- Los defectos que se generen debido al uso de los productos en servicios no doméstico/residencial regulares o en desacuerdo con el uso recomendado
- Daños ocasionados por fluctuaciones de voltajes, voltaje fuera de norma o por causas fuera de Philips, como cortocircuitos en los bafles o parlantes.
- En las ciudades en donde no existe el taller autorizado del servicio de Philips, los costos del transporte del aparato y/o el técnico autorizado, corren por cuenta del cliente.
- La garantía no será válida si el producto necesita modificaciones o adaptaciones para que funcione en otro país que no es aquél para el cual fue mercadeado.

El único documento válido para hacer efectiva la garantía de los productos, es la Factura o Boleta de compra del consumidor final.

Aquellos productos que hayan sido adquiridos en otros países y que no estén en el rango normal del país donde se efectuará la reparación, dicha prestación de servicio tomará mas tiempo de lo normal ya que es necesario pedir las partes/piezas al centro de producción correspondiente.

Centros de información

Líneas de atención al consumidor

Bolivia: 800 100 664

<http://www.philips.com/>

Chile: 600 7445477

www.philips.cl

Colombia: 01 800 700 7445

www.philips.com.co

Costa Rica: 0800 507 7445

www.centralamerica.philips.com

Ecuador: 1-800-10-1045

www.centralamerica.philips.com

El Salvador: 800 6024

www.centralamerica.philips.com

Guatemala: 1 800 299 0007

www.centralamerica.philips.com

Honduras

www.centralamerica.philips.com

México: 01 800 504 6200

www.philips.com.mx

Nicaragua

www.centralamerica.philips.com

Panamá: 800 8300

www.centralamerica.philips.com

Perú: 0800-00100

www.philips.com.pe

República Dominicana: 1 800 751 2673

www.centralamerica.philips.com

Venezuela: 0800 100 4888

www.philips.com.ve

LISTA DE SERVIÇO AUTORIZADO - BRASIL

ACRE		ITUMBIARA	64-34310837	SAO JOAO DEL REI	32-33718306
CRUZEIRO DO SUL	68-33227216	LUZIANIA	61-36228519	SAO SEBASTIAO DO PARAISO	35-35313094
RIO BRANCO	68-32217642	MINEIROS	64-36618259	SETE LAGOAS	31-37718570
		PIRES DO RIO	64-34611133	TEOFILO OTONI	33-3522831
ALAGOAS		RIALMA	62-33971320	TIMOTEO	31-38482728
ARAPIRACA	82-35222367	RIO VERDE	64-36132034	TRES CORACOES	35-32324143
MACEIO	82-32417237	TRINDADE	62-35051505	UBA	32-35323626
PALMEIRA DOS INDIOS	82-34213452	URUACU	62-33571285	UBERABA	34-33325250
UNIAO DOS PALMARES	82-32811305			UBERLANDIA	34-32123636
		MARANHAO		VARGINHA	35-32228414
AMAPA		ACAILANDIA	99-35381889	VARZEA DA PALMA	38-37311548
MACAPA	96-32175934	BACABAL	99-36212794	VICOSA	31-38918000
		CAXIAS	99-35212377		
AMAZONAS		CODO	99-36612942	PARA	
MANAUS	92-36633366	SANTA INES	98-36537553	ALTAMIRA	91-35154349
MANAUS	92-32324252	IMPERATRIZ	99-35232906	ANANINDEUA	91-32354831
		PEDREIRAS	99-36423142	BELEM	91-32421090
BAHIA		PRESIDENTE DUTRA	99-36631815	BELEM	91-32542424
ALAGOINHAS	75-34211128	SAO JOSE DE RIBAMAR	98-32241581	CAPANEMA	91-34621100
BARREIRAS	77-36117592	SAO LUIS	98-32323236	CASTANHAL	91-37215052
CAETITE	77-34541183			MARABA	94-33224207
CAMACARI	71-36218288	MATO GROSSO		PARAGOMINAS	91-30110778
CRUZ DAS ALMAS	75-36212839	BARRA DO GARCAS	66-34011394	PARAUAPEBAS	94-33561756
EUNAPOLIS	73-32815181	CUIABA	65-33176464	SANTAREM	93-35235322
FEIRA DE SANTANA	75-32232882	LUCAS DO RIO VERDE	65-35491333	TUCURUI	55-33523215
GUANAMBI	77-34512791	PONTES E LACERDA	65-32662326		
ILHEUS	73-32315995	RONDONOPOLIS	66-34233888	PARAIBA	
IRECE	74-36410202	TANGARA DA SERRA	65-33261431	CAMPINA GRANDE	83-33212128
ITABUNA	73-36137777	VARZEA GRANDE	65-36826502	GUARABIRA	83-32711159
JACOBINA	74-36211323			JOAO PESSOA	83-32469689
JEQUIE	73-35254141	MATO GROSSO DO SUL		NOVA FLORESTA	83-33741014
JUAZEIRO	74-36116456	AMAMBAI	67-34811543	SAPE	83-32832479
LAURO DE FREITAS	71-33784021	CAMPO GRANDE	67-33831540		
MURITIBA	75-34241908	CAMPO GRANDE	67-33213898	PARANA	
PAULO AFONSO	75-32811349	DOURADOS	67-34271717	ARAPONGAS	43-32521606
RIBEIRA DO POMBAL	75-32761853	NOVA ANDRADINA	67-34413851	ASSIS CHATEAUBRIAND	44-35285181
SALVADOR	71-32473659			BANDEIRANTES	43-35421711
SALVADOR	71-32072070	MINAS GERAIS		CAMPO MOURAO	44-30164500
SALVADOR	71-33356233	ANDRADAS	35-37312970	CASCABEL	45-32254005
SENHOR DO BONFIM	74-35413143	ARAGUARI	34-32416026	CIANORTE	44-36292842
SERRINHA	75-32611794	ARAXA	34-36611132	CURITIBA	41-33334764
SANTO ANTONIO DE JESUS	75-36314470	ARAXA	34-36691869	CURITIBA	41-32648791
TEIXEIRA DE FREITAS	73-30111600	ARCOS	37-33513455	FOZ DO IGUAQU	45-35234115
		BAMBUI	37-34311473	FRANCISCO BELTRAO	46-35241501
CEARÁ		BELO HORIZONTE	31-32254066	IBIPORA	43-32581863
CRATEUS	88-36910019	BETIM	31-35322088	IRATI	42-34221337
FORTALEZA	85-40088555	BOM DESPACHO	37-35222511	LAPA	41-36222410
IGUAU	88-35810512	CARANGOLA	32-37412017	LONDRINA	43-33210077
ITAPIPOCA	88-36312030	CARATINGA	33-33213433	MANDAGUARI	44-32331335
JUAZEIRO DO NORTE	88-3581973	CASSIA	35-35412293	MARECHAL CANDIDO RONDON	45-32542605
SOBRAL	88-36110605	CATAGUASES	32-34227986	MARINGA	44-32264620
TAUA	88-34371987	CONGONHAS	31-37311638	MEDIANEIRA	45-32642580
TIANGUA	88-36713336	CONTAGEM	31-33912994	PARANAVAÍ	44-34234711
UBAJARA	88-36341233	CORONEL FABRICIANO	31-38411804	PATO BRANCO	46-32242786
		CURVELO	38-37213009	PONTA GROSSA	42-30285051
DISTRITO FEDERAL		DIVINOPOLIS	37-32212353	RIO NEGRO	47-36450251
BRASILIA	61-35564840	FORMIGA	37-33214177	ROLANDIA	43-32561947
BRASILIA	61-33549615	GOVERNADOR VALADARES	33-32716650	SANTO ANTONIO PLATINA	43-35341809
BRASILIA	61-34451991	GUAXUPE	35-35514124	SAO MIGUEL DO IGUAÇU	45-35651429
		IPATINGA	31-38222332	TOLEDO	45-32522471
ESPÍRITO SANTO		ITABIRA	31-38316218	UMUARAMA	44-30561485
ALEGRE	28-35526349	ITAJUBA	35-36211315		
ARACRUZ	27-32561251	ITAPERERICA	37-33411326	PERNAMBUCO	
BAIXO GUANDU	27-37321142	ITAUNA	37-32412468	CABO SANTO AGOSTINHO	81-35211823
BARRA DE SAO FRANCISCO	27-37562245	JOAO MONLEVADE	31-38512909	CAMARAGIBE	81-34581246
CACHEOIRA DE ITAPEMIRIM	28-35223524	JOAO PINHEIRO	38-35611327	CARUARU	81-37220235
COLATINA	27-37222888	JUIZ DE FORA	32-32151514	GARANHUNS	87-37610085
GUARAPARI	27-33614355	LAGOA DA PRATA	37-32613493	PAULISTA	81-34331142
SAO MATEUS	27-37633806	LAVRAS	35-38210500	RECIFE	81-32313399
SERRA	27-3284292	MANHUAÇU	33-33314735	RECIFE	81-34656042
VILA VELHA	27-32891233	MONTA CARMELO	34-38422088	RECIFE	81-32286123
VITORIA	27-32233899	MONTA SANTO DE MINAS	35-35911888	SERRA TALHADA	87-38311401
		MONTES CLAROS	38-32218925		
GOIÁS		MURIAE	32-37224334	PIAUÍ	
ANAPOLIS	62-33243562	NANUQUE	33-36212165	PARNAIBA	86-33222877
CALDAS NOVAS	64-34532878	NOVA LIMA	31-35412026	TERESINA	86-32230825
CATALAO	64-34412786	OLIVEIRA	37-33314444	TERESINA	86-32214618
FORMOSA	61-36318166	PARACATU	38-36711250		
GOIANESIA	62-33534967	PASSOS	35-35214342	RIO DE JANEIRO	
GOIANIA	62-32916770	PATOS DE MINAS	34-38222588	BARRA DO PIRAI	24-24437745
GOIANIA	62-32510933	PATROCINIO	34-38311531	BELFORD ROXO	21-27795797
GOIANIA	62-32292908	PIUMHI	37-33714632	BOM JESUS DO ITABAPOANA	22-38312216
GOIATUBA	64-34952401	POCOS DE CALDAS	35-37224428	CABO FRIO	22-26451819
INHUMAS	62-35111431	PONTE NOVA	31-38172486	CAMPOS DOS GOYTACAZES	22-27221499
ITAPURANGA	62-33551484	POUSO ALEGRE	35-34212120	CORDEIRO	22-25512099

LISTA DE SERVIÇO AUTORIZADO - BRASIL

DUQUE DE CAXIAS	21-27711508	CONCORDIA	49-34423704	SAO CAETANO DO SUL	11-42275339
ITAGUAI	21-26868491	CRICIUMA	48-21015555	SAO CARLOS	16-33614913
ITAOCARA	22-38612740	CURITIBANOS	49-32410851	SAO JOAO DA BOA VISTA	19-36232990
ITAPERUNA	22-38236825	FLORIANOPOLIS	48-32049700	SAO JOSE DO RIO PARDO	19-36085760
MACAE	22-27591358	GAROPABA	48-32544104	SAO JOSE DO RIO PRETO	17-32325680
MAGE	21-26333342	INDAIAL	47-33332373	SAO JOSE DOS CAMPOS	12-39239508
NITEROI	21-2622-0157	ITAJAI	47-33444777	SAO PAULO	11-29791184
NOVA FRIBURGO	22-25227692	JARAGUA DO SUL	47-33722050	SAO PAULO	11-38659897
PETROPOLIS	24-22454997	JOACABA	49-35220418	SAO PAULO	11-22722245
RESENDE	24-33550101	JOINVILLE	47-34331146	SAO PAULO	11-26940101
RIO DE JANEIRO	21-24264702	LAGES	49-32244414	SAO PAULO	11-32077111
RIO DE JANEIRO	21-25892030	LAGUNA	48-36443153	SAO PAULO	11-39757996
RIO DE JANEIRO	21-25096851	MARAVILHA	49-36640052	SAO PAULO	11-22976464
RIO DE JANEIRO	21-24315759	PINHALZINHO	49-33661014	SAO PAULO	11-56679695
RIO DE JANEIRO	21-25714999	PORTO UNIAO	42-35232839	SAO PAULO	11-38751333
RIO DE JANEIRO	21-3381-0711	RIO DO SUL	47-35211920	SAO PAULO	11-38457575
SAO GONCALO	21-27013214	RIO NEGRINHO	47-36440979	SAO PAULO	11-22966122
TERESOPOLIS	21-27493467	SAO MIGUEL DO OESTE	49-36220026	SAO PAULO	11-20713907
TRES RIOS	24-22521388	TUBARAO	48-36261651	SAO PAULO	11-25770899
VOLTA REDONDA	24-33481601	VIDEIRA	49-35660376	SAO PAULO	11-32222311
		XANXERE	49-34333026	SAO ROQUE	11-47125635
				SAO VICENTE	13-34646559
RIO GRANDE DO NORTE		SÃO PAULO		SOROCABA	15-32241170
CAICO	84-34171844	AGUAS DE LINDOIA	19-38241524	SUZANO	11-47598671
NATAL	84-32231249	AMERICANA	19-34062914	TABOAO DA SERRA	11-47871480
NATAL	84-32132345	AMPARO	19-38072674	TAQUARITINGA	16-32524039
PAU DOS FERROS	84-33512334	ARACATUBA	18-36218775	TAUBATE	12-36219080
		ARARAQUARA	16-33368710	TIETE	15-32822452
RIO GRANDE DO SUL		ASSIS	16-33242649	TUPA	14-34962596
BAGE	53-32411295	ATIBAIA	11-44118145	VALINHOS	19-38716629
BENTO GONCALVES	54-34526825	AVARE	14-37322142	VOTUPORANGA	17-34214940
CAMAQUA	51-36711686	BARRETOS	17-33222742		
CANELA	54-32821551	BAURUR	14-31049551	SERGEPE	
CARAZINHO	54-33302292	BIGURI	18-36424011	ARACAJU	79-32176080
CAXIAS DO SUL	51-30211808	BOTUCATU	14-38821081	ITABAIANA	79-34313023
DOIS IRMAOS	51-35641286	CAMPINAS	19-37372500	LAGARTO	79-36312656
ERECIM	54-33211933	CAMPOS DO JORDAO	12-36622142		
ESTANCIA VELHA	51-35612142	CANDIUVIA	17-35232524	TOCANTINS	
FARROUPILHA	54-32683603	CERQUILHO	15-32842121	ARAGUAINA	63-34111818
FLORES DA CUNHA	54-32922625	CRUZEIRO	12-31433859	GUARAI	63-34641590
FREDERICO WESTPHALEN	55-37441850	DIADEMA	11-40430669	GURUPI	63-33511038
GRAVATAI	51-30422830	DRACENA	18-38212479	PALMAS	63-32175628
IJUI	55-33327766	FERNANDOPOLIS	17-34423752		
LAJEADO	51-37145155	FRANCA	16-37223898		
MARAU	54-33424571	FRANCO DA ROCHA	11-44492608		
MONTENEGRO	51-36324187	GUARATINGUETA	12-31335030		
NOVA PRATA	54-32421328	GUARUJA	13-33582942		
NOVO HAMBURGO	51-35823191	GUARULHOS	11-24431153		
OSORIO	51-36632524	IBITINGA	16-33417665		
PASSO FUNDO	54-33111104	INDAIATUBA	19-38753831		
PELOTAS	53-32223633	ITAPETININGA	15-32710936		
PORTO ALEGRE	51-32226941	ITAPIRA	19-38633802		
PORTO ALEGRE	51-33256653	ITAPOLIS	16-32622524		
PORTO ALEGRE	53-32268834	ITAQUAQUECETUBA	11-46404162		
RIO GRANDE	53-32323211	ITARARE	15-35322743		
SANTA CRUZ DO SUL	51-37153048	ITU	11-40230188		
SANTA MARIA	55-30282235	ITUVERAVA	16-37293365		
SANTA ROSA	55-35113449	JALES	17-36324479		
SAO JOSE DO OURO	54-33521216	JAU	14-36222117		
SOBRADINHO	51-37421409	JUNDIAI	11-45862182		
TAPERA	54-33851160	LEME	19-35713528		
TAQUARI	51-36534390	LIMEIRA	19-34413179		
TORRES	51-36641940	LINS	14-35227283		
TRES DE MAIO	55-35358727	MARILIA	14-34547437		
URUGUAIANA	55-34118069	MATAO	16-33821046		
VACARIA	54-32311396	MAUA	11-45145233		
VENANCIO AIRES	51-37411443	MOGI DAS CRUZES	11-47941814		
VERA CRUZ	51-37181350	MOGI GUAÇU	19-38181171		
		MOJI MIRIM	19-38624401		
RONDÔNIA		OLIMPIA	17-32805378		
BURITIS	69-32383830	OSASCO	11-36837343		
CACAOAL	69-34431415	OURINHOS	14-33225457		
GUAJARA MIRIM	69-35414430	PIRACICABA	19-34304054		
PORTO VELHO	69-32273377	PIRASSUNUNGA	19-35614091		
		PORTO FERREIRA	19-35851891		
RORAIMA		PRESIDENTE PRUDENTE	18-32225168		
BOA VISTA	95-32249605	PROMISSAO	14-35411696		
		REGISTRO	13-38212324		
SANTA CATARINA		RIBEIRAO PRETO	16-36368156		
ARARANGUA	48-35220304	RIBEIRAO PRETO	16-39049908		
BALNEARIO CAMBORIU	47-33630706	RIO CLARO	19-35348543		
BLUMENAU	47-33233907	SALTO	11-40296563		
BRUSQUE	47-33557518	SANTO ANDRE	11-49905288		
CANOINHAS	47-36223615	SANTOS	13-32272947		
CAPINZAL	49-35552266	SAO BERNARDO CAMPO	11-41257000		
CHAPECO	49-33221144				

CERTIFICADO DE GARANTIA NO BRASIL

Este aparelho é garantido pela Philips do Brasil Ltda., por um período superior ao estabelecido por lei. Porém, para que a garantia tenha validade, é imprescindível que, além deste certificado, seja apresentada a nota fiscal de compra do produto.

A Philips do Brasil Ltda. assegura ao proprietário consumidor deste aparelho as seguintes garantias, a partir da data de entrega do produto, conforme expresso na nota fiscal de compra, que passa a fazer parte deste certificado:

Garantia para rádios e reprodutores de CD portáteis

(sem caixa acústica destacável): 180 dias

Garantia para os demais produtos da marca Philips: 365 dias.

Esta garantia perderá sua validade se:

- O defeito apresentado for ocasionado pelo uso indevido ou em desacordo com o seu manual de instruções.
- O produto for alterado, violado ou consertado por pessoa não autorizada pela Philips.
- O produto for ligado a fonte de energia (rede elétrica, pilhas, bateria, etc.) de características diferentes das recomendadas no manual de instruções e/ou no produto.
- O número de série que identifica o produto estiver de alguma forma adulterado ou rasurado.

Estão excluídos desta garantia defeitos decorrentes do descumprimento do manual de instruções do produto, de casos fortuitos ou de força maior, bem como aqueles causados por agentes da natureza e acidentes. Excluem-se igualmente desta garantia defeitos decorrentes do uso dos produtos em serviços não doméstico/residencial regular ou em desacordo com o uso recomendado.

ESTÃO EXCLUÍDAS DA GARANTIA ADICIONAL AS PILHAS OU BATERIAS FORNECIDAS JUNTO COM O CONTROLE REMOTO.

Nos municípios onde não exista assistência técnica autorizada Philips, as despesas de transporte do aparelho e/ou técnico autorizado correm por conta do consumidor requerente do serviço.

A garantia não será válida se o produto necessitar de modificações ou adaptações para habilitá-lo a operar em qualquer outro país que não aquele para o qual foi designado, fabricado, aprovado e/ou autorizado, ou ter sofrido qualquer dano decorrente deste tipo de modificação.

Philips do Brasil Ltda.

No Brasil, para informações adicionais sobre o produto, entre em contato com o CIC - Centro de Informações ao Consumidor através dos telefones (11) 2121-0203 (Grande São Paulo) e 0800-701-0203 (demais regiões e estados).

Horário de atendimento: de segunda a sexta-feira, das 8h às 20h e sábados das 8h às 13h.

Visite também nossa página de suporte ao consumidor no website www.philips.com.br/suporte, onde também está disponível a lista completa e atualizada das assistências técnicas autorizadas Philips.

**Para atendimento fora do Brasil, contate a Philips local ou a: Philips Consumer Service
Beukenlaan 2 - 5651 CD Eindhoven The Netherlands**

Certificado de Garantía en Argentina

Artefacto:

Fabricante/Importador: Philips Argentina S.A.
y/o Fábrica Austral de Productos Eléctricos S.A.
Dirección: Vedia 3892 - Buenos Aires
Fecha de Venta:

Modelo:

	Nro. de serie
--	----------------------

Firma y sello de la casa vendedora.

PHILIPS ARGENTINA S.A. en adelante denominada “la empresa”, garantiza al comprador de este artefacto por el término de (1) año a partir de la fecha de adquisición, el normal funcionamiento contra cualquier defecto de fabricación y/o vicio de material, y se compromete a reparar el mismo —sin cargo alguno para el adquirente— cuando el mismo fallare en situaciones normales de uso y bajo las condiciones que a continuación se detallan:

1. Este certificado de garantía es válido únicamente en la Republica Argentina. El certificado debe ser completado por la casa vendedora y ser presentado por el usuario conjuntamente con la factura original de compra.
2. Serán causas de anulación de esta garantía en los casos que corresponda:
 - 2.1. Uso impropio o distinto del uso doméstico.
 - 2.2. Exceso o caídas de tensión eléctrica que impliquen uso en condiciones anormales.
 - 2.3. Instalación y/o uso en condiciones distintas a las marcadas en el “Manual de instalación y uso” que se adjunta a esta garantía.
 - 2.4. Cualquier intervención al artefacto por terceros no autorizados por la empresa.
3. La garantía carecerá de validez si se observare lo siguiente:
 - 3.1. Enmiendas o raspaduras en los datos del certificado de garantía o factura.
 - 3.2. Falta de factura original de compra que detalle tipo de artefacto, modelo, número de serie y fecha que coincida con los del encabezamiento del presente certificado.
4. No están cubiertos por esta garantía los siguientes casos:
 - 4.1. Los daños ocasionados al exterior del gabinete.
 - 4.2. Las roturas, golpes, caídas o rayaduras causadas por traslados.
 - 4.3. Los daños o fallas ocasionados por deficiencias, sobretensiones, descargas o interrupciones del circuito de alimentación eléctrica o rayos, deficiencias en la instalación eléctrica del domicilio del usuario o conexión del artefacto a redes que no sean las especificadas en el Manual de Uso del mismo.
 - 4.4. Las fallas, daños, roturas o desgastes producidos por el maltrato o uso indebido del artefacto y/o causadas por inundaciones, incendios, terremotos, tormentas eléctricas, golpes o accidentes de cualquier naturaleza.
 - 4.5. Las fallas o daños ocasionados en desperfectos en la línea telefónica.
 - 4.6. Las fallas producidas por una mala recepción ocasionada en el uso de una antena deficiente o en señales de transmisión débiles.
5. Las condiciones de instalación y uso del artefacto se encuentran detalladas en el Manual de Uso del mismo.
6. La empresa no asume responsabilidad alguna por los daños personales o a la propiedad al usuario o a terceros que pudieran causar la mala instalación o uso indebido del artefacto, incluyendo en este último caso a la falta de mantenimiento.
7. En caso de falla, el usuario deberá requerir la reparación a la empresa a través del Service Oficial y/o Talleres Autorizados más próximos a su domicilio y cuyo listado se acompaña al presente. La empresa a segura al usuario la reparación y/o reposición de piezas para su correcto funcionamiento en un plazo no mayor a 30 días contados a partir de la fecha de solicitud de reparación, salvo caso fortuito o fuerza mayor.

8. Toda intervención del servicio técnico realizada a pedido del usuario dentro del plazo de garantía, que no fuera originada por falla o defecto alguno cubierto por este certificado, deberá ser abonado por el interesado de acuerdo a la tarifa vigente.
9. El presente certificado anula cualquier otra garantía implícita o explícita, por la cual y expresamente no autorizamos a ninguna otra persona, sociedad o asociación a asumir por nuestra cuenta ninguna responsabilidad con respecto a nuestros productos.
10. En caso de que durante el período de vigencia de esta garantía el artefacto deba ser trasladado a las Delegaciones Oficiales y/o Talleres Autorizados de Service para su reparación, el transporte será realizado por la empresa y serán a su cargo los gastos de flete y seguros y cualquier otro que deba realizarse para su ejecución.



PHILIPS

Red de Talleres Autorizados en Argentina

CAPITAL FEDERAL

ATTENDANCE S.A.

- Av. Monroe 3351 (C1430BKA) Cap. Fed.
- Tel.: 4545-5574/0704 ó 6775-1300
- Ventas de Repuestos y Accesorios
- Tel.: 4545-0854

DIG TRONIC

- Av. San Martín 1762 (C1416CRS) Cap. Fed.
- Tel.: 4583-1501

ELECTARG S.R.L.

- Av. Córdoba 1357 (C1055AAD) Cap. Fed.
- Ventas de Repuestos y Accesorios
- Tel.: 4811-1050

Caballito Electarg J. M. Moreno 287 4903-6967/6854/8983

BUENOS AIRES

Azul	Herlein Raúl Horacio	Av. 25 de Mayo 1227	(02281) 428719
Bahía Blanca	Neutron	Soler 535	(0291) 4535329
Bragado	Yacovino Juan J.	San Martín 2141	(02342) 424147
Campana	Electricidad Krautor	Lavalle 415	(03489) 432919
Chivilcoy	Fama	Coronel Suárez 110	(02346) 424129
Junín	Junín Service	Alsina 537	(02362) 442754
La Plata	Da Tos e Hijos	Calle 68 N° 1532	(0221) 4516021
La Plata	Service Técnico La Plata	Av. 51 N° 1051 esq. 16	(0221) 4108155
Mar de Ajó	Tauro Electrónica	Catamarca 14	(02257) 421750
Mar del Plata	Central Service	Olazábal 2249	(0223) 4721639/4729367
Mar del Plata	Service Integral	Diag. Pueyrredón 3229	(0223) 4945633
Necochea	Electrónica Camejo	Calle 63 N° 1745	(02262) 426134
Pehuajó	Calcagni Carlos Alberto	Zubiría 794	(02396) 472665
Pergamino	ACV Sistemas	Dr. Alem 758	(02477) 421177
Pergamino	El Service	Juan B. Justo 1931	(02477) 418000

San Nicolás	Servitec	Bv. Alvarez 148	(03461) 454729/429578
San Pedro	Electrónica Menisale	Mitre 1695	(03329) 425523
Tandil	Lazzarini Oscar Rafael	Pellegrini 524	(02293) 442167
Trenque Lauquen	Labruno Electrónica	Av. San Martín 426	(02392) 423248
Tres Arroyos	Saini Fabián y Sergio	Av. Belgrano 562	(02983) 427369
Zárate	Electrónica Spinozzi	Ituzaingo 1030	(03487) 427353

GRAN BUENOS AIRES

Avellaneda	Casa Torres S.A.	Av. Mitre 2559	4255-5854
Florencio Varela	Casa Torres S.A.	San Martín 2574	4255-5854
Gregorio de Laferrere	Electrónica Alvarez	Honorio Luque 6084	4626-1322
Lomas de Zamora	Attendance S.A. Lomas	Laprida 485	4292-8900
Merlo	Argentronica S.H.	Pte. Cámpora 2175	(0220) 4837177/4829934
Moreno	Argentronica S.H.	Bmé. Mitre 2977 loc.2	(0237) 4639500
Morón	Servotronic	Ntra. Sra. del Buen Viaje 1222	4627-5656
Olivos	Appliance	Av. Libertador 2684	4794-7700
Quilmes	Casa Torres S.A.	E. Rios esq. Gran Canaria	4255-5854
Ramos Mejía	Electarg S.R.L. Suc.	Belgrano 224	4656-0619
San Miguel	Servotronic San Miguel	Belgrano 999	4664-4131
Villa Ballester	Servotronic	J. Hernández 3101	4767-2515/4768-5249

CATAMARCA

Catamarca	Omicron Central de Serv.	San Martín 225	(03833) 427235
-----------	--------------------------	----------------	----------------

CHACO

Resistencia	Freschi Jorge Oscar	Av. Avalos 320	(03722) 426030
-------------	---------------------	----------------	----------------

CHUBUT

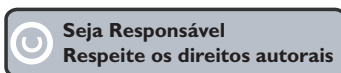
Comodoro Rivadavia	C.A.S. S.R.L.	Alem 145	(0297) 4442629
Trelew	Fagtron Electrónica	Brasil 253	(02965) 427073

CORDOBA

Córdoba Capital	Servelco S.R.L.	Pje. E. Marsilla 635	(0351) 4724008/4732024
Río Cuarto	Maurutto Victor G.	Bv. Almafuerte 487	(0358) 4660204
Río Cuarto	Capaldi Abel	Paunero 832	(0358) 4623003
Río Tercero	Service Omega	Homero Manzi 149	(03571) 423330
San Francisco	Acuña Walter Electrónica	M. Moreno 360	(03564) 425367
Villa María	Grasso Electrónica	Bv. Alvear 541	(0353) 4521366
Villa María	Vanguard Sist. Electrónicos	México 421	(0353) 4532951

Language Code

Abkhazian	6566	Inupiaq	7375	Pushto	8083
Afar	6565	Irish	7165	Russian	8285
Afrikaans	6570	Íslenska	7383	Quechua	8185
Amharic	6577	Italiano	7384	Raeto-Romance	8277
Arabic	6582	Ivrit	7269	Romanian	8279
Armenian	7289	Japanese	7465	Rundi	8278
Assamese	6583	Javanese	7486	Samoan	8377
Avestan	6569	Kalaallisut	7576	Sango	8371
Aymara	6589	Kannada	7578	Sanskrit	8365
Azerhijani	6590	Kashmiri	7583	Sardinian	8367
Bahasa Melayu	7783	Kazakh	7575	Serbian	8382
Bashkir	6665	Kernewek	7587	Shona	8378
Belarusian	6669	Khmer	7577	Shqip	8381
Bengali	6678	Kinyarwanda	8287	Sindhi	8368
Bihari	6672	Kirghiz	7589	Sinhalese	8373
Bislama	6673	Komi	7586	Slovensky	8373
Bokmål, Norwegian	7866	Korean	7579	Slovenian	8376
Bosanski	6683	Kuanyama; Kwanyama	7574	Somali	8379
Brezhoneg	6682	Kurdish	7585	Sotho; Southern	8384
Bulgarian	6671	Lao	7679	South Ndebele	7882
Burmese	7789	Latina	7665	Sundanese	8385
Castellano, Español	6983	Latvian	7686	Suomi	7073
Catalán	6765	Letzeburgesch;	7666	Swahili	8387
Chamorro	6772	Limburgan; Limburger	7673	Swati	8383
Chechen	6769	Lingala	7678	Svenska	8386
Chewa; Chichewa; Nyanja	7889	Lithuanian	7684	Tagalog	8476
中文	9072	Luxembourgish;	7666	Tahitian	8489
Chuang; Zhuang	9065	Macedonian	7775	Tajik	8471
Church Slavic; Slavonic	6785	Malagasy	7771	Tamil	8465
Chuvash	6786	Magyar	7285	Tatar	8484
Corsican	6779	Malayalam	7776	Telugu	8469
esky	6783	Maltese	7784	Thai	8472
Dansk	6865	Manx	7186	Tibetan	6679
Deutsch	6869	Maori	7773	Tigrinya	8473
Dzongkha	6890	Marathi	7782	Tonga (Tonga Islands)	8479
English	6978	Marshallese	7772	Tsonga	8483
Esperanto	6979	Moldavian	7779	Tswana	8478
Estonian	6984	Mongolian	7778	Türkçe	8482
Euskara	6985	Nauru	7865	Turkmen	8475
	6976	Navaho; Navajo	7886	Twi	8487
Faroese	7079	Ndebele, North	7868	Uighur	8571
Français	7082	Ndebele, South	7882	Ukrainian	8575
Frysk	7089	Ndonga	7871	Urdu	8582
Fijian	7074	Nederlands	7876	Uzbek	8590
Gaelic; Scottish Gaelic	7168	Nepali	7869	Vietnamese	8673
Galleghan	7176	Norsk	7879	Volapuk	8679
Georgian	7565	Northern Sami	8369	Walloon	8765
Gikuyu; Kikuyu	7573	North Ndebele	7868	Welsh	6789
Guarani	7178	Norwegian Nynorsk;	7878	Volof	8779
Gujarati	7185	Occitan; Provençal	7967	Xhosa	8872
Hausa	7265	Old Bulgarian; Old Slavonic	6785	Yiddish	8973
Herero	7290	Oriya	7982	Yoruba	8979
Hindi	7273	Oromo	7977	Zulu	9085
Hiri Motu	7279	Ossetian; Ossetic	7983		
Hrwatski	6779	Pali	8073		
Ido	7379	Panjabi	8065		
Interlingua (International)	7365	Persian	7065		
Interlingue	7365	Polski	8076		
Inuktitut	7385	Português	8084		



Especificações sujeitas a alteração sem aviso prévio.
Marcas comerciais são propriedade de Koninklijke Philips Electronics N.V. ou de seus respectivos proprietários.

www.philips.com

© 2010 Koninklijke Philips Electronics N.V.

All rights reserved.

sgpam_1037/78_v3