

# Always there to help you

Register your product and get support at  
[www.philips.com/support](http://www.philips.com/support)

HTL3120



# User manual

# PHILIPS



# Contents

---

<b>1</b>	<b>Important</b>	<b>2</b>
	Safety	2
	Care for your product	3
	Care for the environment	3
	Help and support	3

---

<b>2</b>	<b>Your SoundBar</b>	<b>4</b>
	Main unit	4
	Remote control	4
	Connectors	5

---

<b>3</b>	<b>Connect and set up</b>	<b>6</b>
	Connect to TV	6
	Connect digital devices through HDMI	7
	Connect audio from TV and other devices	7

---

<b>4</b>	<b>Use your SoundBar</b>	<b>8</b>
	Adjust the volume	8
	Choose your sound	8
	MP3 player	9
	USB storage devices	9
	Play audio through Bluetooth	10
	Auto standby	10
	Apply factory settings	11

---

<b>5</b>	<b>Wall mount</b>	<b>11</b>
----------	-------------------	-----------

---

<b>6</b>	<b>Product specifications</b>	<b>12</b>
----------	-------------------------------	-----------

---

<b>7</b>	<b>Troubleshooting</b>	<b>13</b>
----------	------------------------	-----------

# 1 Important

Read and understand all instructions before you use your product. If damage is caused by failure to follow instructions, the warranty does not apply.

---

## Safety

### **Risk of electric shock or fire!**

- Never expose the product and accessories to rain or water. Never place liquid containers, such as vases, near the product. If liquids are spilt on or into the product, disconnect it from the power outlet immediately. Contact Consumer Care to have the product checked before use.
- Never place the product and accessories near naked flames or other heat sources, including direct sunlight.
- Never insert objects into the ventilation slots or other openings on the product.
- Where the mains plug or an appliance coupler is used as the disconnect device, the disconnect device shall remain readily operable.
- Disconnect the product from the power outlet before lightning storms.
- When you disconnect the power cord, always pull the plug, never the cable.

### **Risk of short circuit or fire!**

- Before you connect the product to the power outlet, ensure that the power voltage matches the value printed on the back or bottom of the product. Never connect the product to the power outlet if the voltage is different.

### **Risk of injury or damage to the SoundBar!**

- Never place the product or any objects on power cords or on other electrical equipment.
- If the product is transported in temperatures below 5°C, unpack the product and wait until its temperature

matches room temperature before connecting it to the power outlet.

- Parts of this product can be made of glass. Handle with care to avoid injury and damage.

### **Risk of overheating!**

- Never install this product in a confined space. Always leave a space of at least four inches around the product for ventilation. Ensure curtains or other objects never cover the ventilation slots on the product.

### **Risk of contamination!**

- Do not mix batteries (old and new or carbon and alkaine, etc.).
- Danger of explosion if batteries are incorrectly replaced. Replace only with the same or equivalent type.
- Remove batteries if they are exhausted or if the remote control is not to be used for a long time.
- Batteries contain chemical substances, they should be disposed of properly.

### **Risk of swallowing batteries!**

- The product/remote control may contain a coin/button type battery, which can be swallowed. Keep the battery out of reach of children at all times! If swallowed, the battery can cause serious injury or death. Severe internal burns can occur within two hours of ingestion.
- If you suspect that a battery has been swallowed or placed inside any part of the body, seek immediate medical attention.
- When you change the batteries, always keep all new and used batteries out of reach of children. Ensure that the battery compartment is completely secure after you replace the battery.
- If the battery compartment cannot be completely secured, discontinue use of the product. Keep out of reach of children and contact the manufacturer.



This is CLASS II apparatus with double insulation, and no protective earth provided.

---

## Care for your product

Use only microfiber cloth to clean the product.

---

## Care for the environment



Your product is designed and manufactured with high quality materials and components, which can be recycled and reused. Never dispose of your product with other household waste. Please inform yourself about the local rules on the separate collection of electrical and electronic products and batteries. The correct disposal of these products helps prevent potentially negative consequences on the environment and human health. Your product contains batteries, which cannot be disposed of with normal household waste. Please inform yourself about the local rules on separate collection of batteries. The correct disposal of batteries helps prevent potentially negative consequences on the environment and human health. Please visit [www.recycle.philips.com](http://www.recycle.philips.com) for additional information on a recycling center in your area.

---

## Help and support

For extensive online support, visit [www.philips.com/support](http://www.philips.com/support) to:

- download the user manual and the quick start guide
- watch video tutorials (available only for selected models)
- find answers to frequently answered questions (FAQs)
- email us a question
- chat with our support representative.

Follow the instructions on the website to select your language, and then enter your product model number:

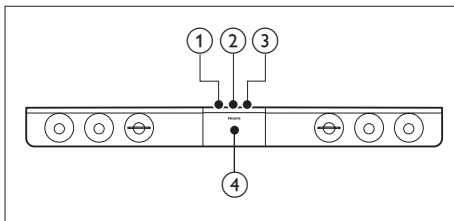
Alternatively, you can contact Consumer Care in your country. Before you contact, note down the model number and serial number of your product. You can find this information on the back or bottom of your product.

## 2 Your SoundBar

Congratulations on your purchase, and welcome to Philips! To fully benefit from the support that Philips offers, register your SoundBar at [www.philips.com/welcome](http://www.philips.com/welcome).

### Main unit

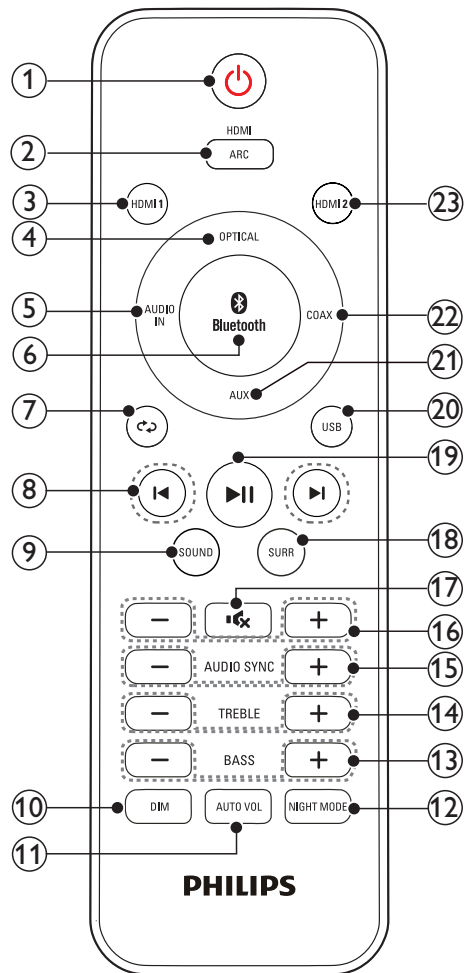
This section includes an overview of the main unit.



- ① **⏻ (Standby-On/Standby indicator)**
  - Switch the SoundBar on or to standby.
  - When the SoundBar is in standby, the standby indicator turns red.
- ② **VOLUME +**  
Increase or decrease volume.
- ③ **SOURCE**  
Select an input source or Bluetooth mode for the SoundBar.
- ④ **Display panel**

### Remote control

This section includes an overview of the remote control.



- ① **⏻ (Standby-On)**
  - Switch the SoundBar on or to standby.
  - When EasyLink is enabled, press and hold for at least three seconds to switch all connected HDMI CEC compliant devices to standby.
- ② **HDMI ARC**  
Switch your source to HDMI ARC connection. If the connected TV is not HDMI ARC compliant or an unsupported audio format is detected, "ARC" on the display panel blinks.

- ③ **HDMI 1**  
Switch your source to the HDMI IN 1 connection.
- ④ **OPTICAL**  
Switch your audio source to the optical connection.
- ⑤ **AUDIO-IN**  
Switch your audio source to the MP3 connection (3.5mm jack).
- ⑥ **Bluetooth**  
Switch to Bluetooth mode.
- ⑦ **↻ (Repeat)**  
Select or turn off shuffle/repeat (repeat one, repeat all) mode in USB mode.
- ⑧ **⏮ / ⏭ (Previous/Next)**  
Skip to the previous or next track in USB mode and Bluetooth mode (only for AVRCP-supported Bluetooth devices).
- ⑨ **SOUND**  
Select a sound mode.
- ⑩ **DIM**  
Set the brightness of SoundBar display panel.
- ⑪ **AUTO VOL**  
Turn auto volume on or off.
- ⑫ **NIGHT MODE**  
Turn night mode on or off.
- ⑬ **BASS +/-**  
Increase or decrease bass.
- ⑭ **TREBLE +/-**  
Increase or decrease treble.
- ⑮ **AUDIO SYNC +/-**  
Increase or decrease audio delay.
- ⑯ **+/- (Volume)**  
Increase or decrease volume.
- ⑰ **🔇 (Mute)**  
Mute or restore volume.
- ⑱ **SURR**  
Select surround or stereo sound.

In HDMI in mode (connected via **HDMI IN 1** or **HDMI IN 2**), press and hold to switch audio output from the Soundbar speaker or TV speaker.

- ⑲ **▶|| (Play/Pause)**  
Start, pause or resume play in USB mode and Bluetooth mode (only for AVRCP-supported Bluetooth devices). Press and hold to stop play in USB mode.
- ⑳ **USB**  
Switch to USB mode.
- ㉑ **AUX**  
Switch your audio source to the AUX connection.
- ㉒ **COAX**  
Switch your audio source to the coaxial connection.
- ㉓ **HDMI 2**  
Switch your source to the HDMI IN 2 connection.

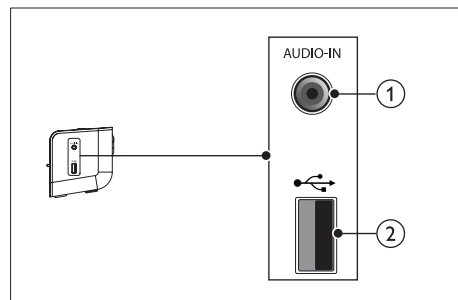
---

## Connectors


This section includes an overview of the connectors available on your SoundBar.

---

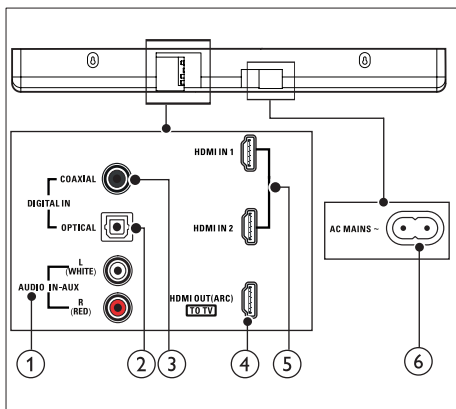
### Side connectors



- ① **AUDIO-IN**  
Audio input from an MP3 player (3.5mm jack).

- ②  (USB)  
Audio input from a USB storage device.

## Rear connectors



- ① **AUDIO IN-AUX**  
Connect to an analog audio output on the TV or an analog device.
- ② **DIGITAL IN-OPTICAL**  
Connect to an optical audio output on the TV or a digital device.
- ③ **DIGITAL IN-COAXIAL**  
Connect to a coaxial audio output on the TV or a digital device.
- ④ **TO TV-HDMI OUT (ARC)**  
Connect to the HDMI input on the TV.
- ⑤ **HDMI IN 1 / HDMI IN 2**  
Connect to the HDMI output on a digital device.
- ⑥ **AC MAINS~**  
Connect to the power supply.

# 3 Connect and set up

This section helps you connect your SoundBar to a TV and other devices, and then set it up. For information about the basic connections of your SoundBar and accessories, see the quick start guide.

## Note

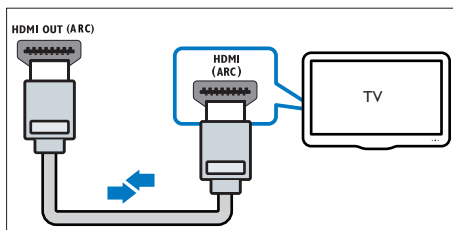
- For identification and supply ratings, see the type plate at the back or bottom of the product.
- Before you make or change any connections, make sure that all devices are disconnected from the power outlet.

## Connect to TV

Connect your SoundBar to a TV. You can listen to audio from TV programs through your SoundBar. Use the best quality connection available on your SoundBar and TV.

## Connect to TV through HDMI (ARC)

Your SoundBar supports HDMI with Audio Return Channel (ARC). If your TV is HDMI ARC compliant, you can hear the TV audio through your SoundBar by using a single HDMI cable.



- 1 Using a High Speed HDMI cable, connect the **HDMI OUT (ARC)** connector on your SoundBar to the **HDMI ARC** connector on the TV.



- The **HDMI ARC** connector on the TV might be labeled differently. For details, see the TV user manual.

- 2 On your TV, turn on HDMI-CEC operations. For details, see the TV user manual.

### Note

- If your TV is not HDMI ARC compliant, connect an audio cable to hear the TV audio through your SoundBar; (see 'Connect audio from TV and other devices' on page 7)
- If your TV has a DVI connector, you can use an HDMI/DVI adapter to connect to TV. However, some of the features may not be available.

## Connect digital devices through HDMI

Connect a digital device such as a set-top box, DVD/Blu-ray player, or games console to your SoundBar through a single HDMI connection. When you connect the devices in this way and play a file or game, the

- video is automatically displayed on your TV, and
- audio is automatically played on your SoundBar.

- 1 Using a High Speed HDMI cable, connect the **HDMI OUT** connector on your digital device to the **HDMI IN 1/2** on your SoundBar.
- 2 Connect your SoundBar to TV through **HDMI OUT (ARC)**.
  - If the TV is not HDMI CEC compliant, select the correct video input on your TV.
- 3 On the connected device, turn on HDMI-CEC operations. For details, see the user manual of the device.

## Connect audio from TV and other devices

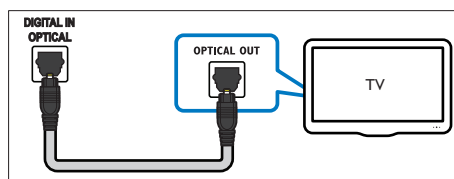
Play audio from TV or other devices through your Soundbar speakers. Use the best quality connection available on your TV, Soundbar, and other devices.

### Note

- When your Soundbar and TV are connected through HDMI ARC, an audio connection is not required. (see 'Connect to TV through HDMI (ARC)' on page 6)

### Option 1: Connect audio through a digital optical cable

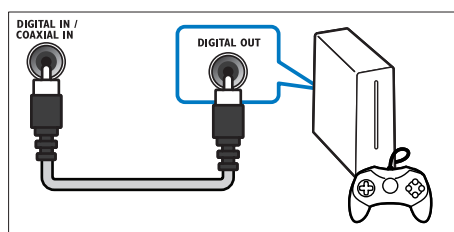
Best quality audio



- 1 Using an optical cable, connect the **OPTICAL** connector on your SoundBar to the **OPTICAL OUT** connector on the TV or other device.
  - The digital optical connector might be labeled **SPDIF** or **SPDIF OUT**.

### Option 2: Connect audio through a digital coaxial cable

Good quality audio



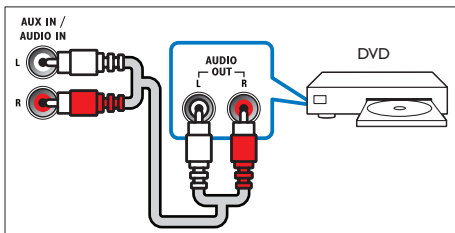
- 1 Using a coaxial cable, connect the **COAXIAL** connector on your SoundBar to the **COAXIAL/DIGITAL OUT** connector on the TV or other device.
  - The digital coaxial connector might be labeled **DIGITAL AUDIO OUT**.

---

### Option 3: Connect audio through analog audio cables

#### Basic quality audio

- 1 Using an analog cable, connect the **AUX** connectors on your SoundBar to the **AUDIO OUT** connectors on the TV or other device.



## 4 Use your SoundBar

This section helps you use the SoundBar to play audio from connected devices.

#### Before you start

- Make the necessary connections described in the quick start guide and the user manual.
- Switch the SoundBar to the correct source for other devices.

---

### Adjust the volume

- 1 Press **+/- (Volume)** to increase or decrease a volume level.
  - To mute sound, press **Mute**.
  - To restore the sound, press **Mute** again or press **+/- (Volume)**.

---

### Choose your sound

This section helps you choose the ideal sound for your video or music.

---

#### Sound mode

Select predefined sound modes to suit your video or music.

- 1 Press **SOUND** to select a sound option from the display panel.
  - **AUTO**: Automatically select a sound setting based on the sound stream.
  - **OFF**: Experience the original sound of your movies and music, without added sound effects.
  - **POWER**: Enjoy thrilling arcade sounds, ideal for action-packed videos and loud parties.

- **HIGH:** Spice up your dull movies and music with added sound effects.
- **CLEAR:** Hear every detail in your music and clear voices in your movies.
- **dEEP:** Experience spoken words and music vocals in comfort.
- **OWN:** Personalize the sound based on your preferences.

---

## Surround sound mode

Experience an immersive audio experience with surround sound modes.

- 1 Press **SURR** to select a sound option from the display panel.
  - **AUTO:** Intelligently select the best surround sound mode based on the media played.
  - **OFF:** Two-channel stereo sound. Ideal for listening to music.
  - **SURR:** Multi-channel surround output.

---

## Equalizer

Change the high frequency (treble) and low frequency (bass) settings of the SoundBar.

- 1 Press **TREBLE +/-** or **BASS +/-** to change the frequency.

---

## Auto volume

Turn the auto volume on to keep the volume constant when you switch to a different source.

- 1 Press **AUTOVOL** to turn auto volume on or off.

---

## Synchronize picture and sound

If the audio and video are not synchronized, delay the audio to match the video.

- 1 Press **AUDIO SYNC +/-** to synchronize the audio with the video.

---

## Night mode

For quiet listening, decrease the volume of loud sounds when audio is played. Night mode is only available for Dolby Digital soundtracks.

- 1 Press **NIGHT MODE** to turn night mode on or off.



### Note

- If auto volume is set to turned on, you cannot enable the night mode.

---

## MP3 player

Connect your MP3 player to play your audio files or music.

### What you need

- An MP3 player.
- A 3.5mm stereo audio cable.

- 1 Using the 3.5mm stereo audio cable, connect the MP3 player to the **AUDIO-IN** connector on your SoundBar.
- 2 Press **AUDIO-IN** on the remote control.
- 3 Press the buttons on the MP3 player to select and play audio files or music.

---

## USB storage devices

Enjoy audio on a USB storage device, such as an MP3 player and USB flash memory, etc.

### What you need

- A USB storage device that is formatted for FAT file systems, and complies with the Mass Storage Class.
- An MP3 or WMA file on a USB storage device

- 1 Connect a USB storage device to the SoundBar.
- 2 Press **USB** on the remote control.

### 3 Use the remote control to control play.

Button	Action
▶	Start, pause or resume play. Press and hold to stop play.
◀/▶	Skip to the previous or next track.
↺ (Repeat)	Select or turn off repeat/shuffle mode.

#### Note

- This product may not be compatible with certain types of USB storage device.
- If you use a USB extension cable, USB HUB, or USB multi-reader, the USB storage device may not be recognized.
- Digital camera PTP protocols are not supported.
- Do not remove the USB storage device while it is being read.
- DRM-protected music files (MP3, WMA) are not supported.
- Support a USB port: 5V  $\overline{\text{---}}$ , 1A.

## Play audio through Bluetooth

Through Bluetooth, connect the SoundBar with your Bluetooth device (such as an iPad, iPhone, iPod touch, Android phone, or laptop), and then you can listen to the audio files stored on the device through your SoundBar speakers.

#### What you need

- A Bluetooth device which supports Bluetooth profile A2DP, AVRCP and with Bluetooth version as 3.0 + EDR.
- The operational range between the SoundBar and a Bluetooth device is approximately 10 meters (30 feet).

1 Press **Bluetooth** on the remote control to switch the SoundBar to Bluetooth mode.

↳ **bt** is displayed on the display panel, blinking.

2 On the Bluetooth device, switch on Bluetooth, search for and select **Philips HTL3120** to start connection (see the

user manual of the Bluetooth device on how to enable Bluetooth).

↳ During connection, **bt** on the display panel blinks.

3 Wait until you hear a beep sound from the SoundBar:

↳ When the Bluetooth connection succeeds, **bt** is displayed on the display panel without blinking.

↳ If the connection fails, **bt** on the display panel blinks continuously.

4 Select and play audio files or music on your Bluetooth device.

- During play, if a call is coming, music play is paused. Play resumes when the call ends.
- If your Bluetooth device supports AVRCP profile, on the remote control you can press **◀/▶** to skip to a track, or press **▶||** to pause/resume play.

5 To exit Bluetooth, select other source.

- When your switch back to Bluetooth mode, Bluetooth connection remains active.

#### Note

- The music streaming may be interrupted by obstacles between the device and SoundBar, such as wall, metallic casing that covers the device, or other devices nearby that operate in the same frequency.
- If you want to connect your SoundBar with another Bluetooth device, press and hold **Bluetooth** on the remote control to disconnect the currently connected Bluetooth device.

## Auto standby

When playing media from a connected device, the SoundBar automatically switches to standby if:

- no button is pressed for 29 minutes, and
- no audio/video play from a connected device.

## Apply factory settings

You can reset your SoundBar to the default settings programmed at the factory.

**1** In AUX mode, within three seconds, press **VOL-**, **BASS-**, and **Treble-**.

↳ When the factory settings restore is complete, the SoundBar automatically switches off and restarts.

## 5 Wall mount

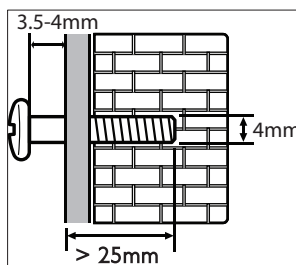


### Note

- Improper wall mounting may result in accident, injury or damage. If you have any query, contact Consumer Care in your country.
- Before wall mounting, make sure the wall can support the weight of your SoundBar.
- Before wall mount, you need not remove the three rubber feet at the bottom of the soundbar; otherwise the rubber feet cannot be fixed back.

### Screw length/diameter

Depending on the type of wall mounting your SoundBar; make sure that you use screws of a suitable length and diameter:



For information about how to wall mount your SoundBar, see the quick start guide.

# 6 Product specifications



## Note

- Specifications and design are subject to change without notice.

---

## Amplifier

- Total output power: 120W RMS (+/- 0.5 dB, 30% THD) / 96W RMS (+/- 0.5 dB, 10% THD)
- Frequency response: 20 Hz-20 kHz /  $\pm 3$  dB
- Signal-to-noise ratio: > 65 dB (CCIR) / (A-weighted)
- Input sensitivity:
  - AUX: 750 mV
  - **AUDIO-IN**: 400 mV

---

## Audio

- S/PDIF Digital audio input:
  - Coaxial: IEC 60958-3
  - Optical: TOSLINK

---

## USB

- Compatibility: Hi-Speed USB (2.0)
- Class support: USB Mass Storage Class (MSC)
- File system: FAT16, FAT32
- Supports MP3 and WMA file formats
- Sampling frequency:
  - MP3: 8 kHz, 11 kHz, 12 kHz, 16 kHz, 22 kHz, 24 kHz, 32 kHz, 44.1 kHz, 48 kHz
  - WMA: 44.1 kHz, 48 kHz
- Constant bit rate:
  - MP3: 8 kbps-320 kbps
  - WMA: 32 kbps-192 kbps

- Version:
  - WMA: V7, V8, V9

---

## Bluetooth

- Bluetooth profiles: A2DP, AVRCP
- Bluetooth version: 3.0 + EDR

---

## Main unit

- Power supply: 110-240 V~, 50/60 Hz
- Power consumption: 25 W
- Standby power consumption:  $\leq 0.5$  W
- Speaker impedance: 8 ohm
- Speaker drivers: 4 x 3" woofer
- Dimensions (WxHxD): 995 x 94 x 102.5 mm
- Weight: 3.5 kg

---

## Remote control batteries

- 2 x AAA-R03-1.5 V

# 7 Troubleshooting



## Warning

- Risk of electric shock. Never remove the casing of the product.

To keep the warranty valid, never try to repair the product yourself.

If you have problems using this product, check the following points before you request service. If you still have a problem, get support at [www.philips.com/support](http://www.philips.com/support).

## Main unit

### The buttons on the SoundBar do not work.

- Disconnect the SoundBar from the power supply for a few minutes, then reconnect.

## Sound

### No sound from SoundBar speakers.

- Connect the audio cable from your SoundBar to your TV or other devices. However, you do not need a separate audio connection when:
  - the SoundBar and TV are connected through **HDMI ARC** connection, or
  - a device is connected to the **HDMI IN** connector on your SoundBar.
- Reset your SoundBar to its factory settings.
- On the remote control, select the correct audio input.
- Make sure that the SoundBar is not muted.

### Distorted sound or echo.

- If you play audio from the TV through the SoundBar, make sure that the TV is muted.

### Audio and video are not synchronized.

- Press **AUDIO SYNC +/-** to synchronize the audio with the video.

## Bluetooth

### A device cannot connect with the SoundBar.

- The device does not support the compatible profiles required for the SoundBar.
- You have not enabled the Bluetooth function of the device. See the user manual of the device on how to enable the function.
- The device is not correctly connected. Connect the device correctly.
- The SoundBar is already connected with another Bluetooth device. Disconnect the connected device, then try again.

### Quality of audio play from a connected Bluetooth device is poor.

- The Bluetooth reception is poor. Move the device closer to the SoundBar, or remove any obstacle between the device and the SoundBar.

### The connected Bluetooth device connects and disconnects constantly.

- The Bluetooth reception is poor. Move the device closer to the SoundBar, or remove any obstacle between the device and the SoundBar.
- Turn off Wi-Fi function on the Bluetooth device to avoid interference.
- For some Bluetooth, the Bluetooth connection can be deactivated automatically to save power. This does not indicate any malfunction of the SoundBar.



Specifications are subject to change without notice

2014 © WOOX Innovations Limited. All rights reserved.

Philips and the Philips' Shield Emblem are registered trademarks of Koninklijke Philips N.V. and are used by WOOX Innovations Limited under license from Koninklijke Philips N.V.

HTL3120\_77\_UM\_V2.0

