

Always there to help you

Register your product and get support at
www.philips.com/support



HTL4110B

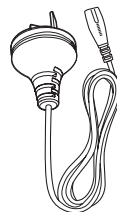
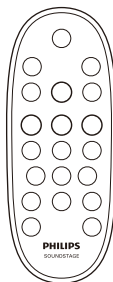
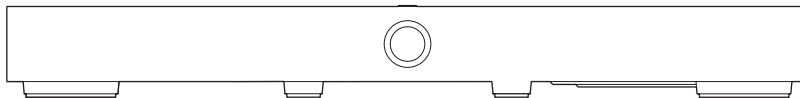


Quick start guide

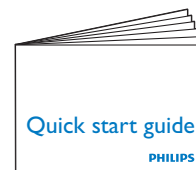
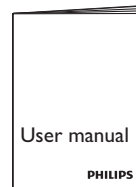
PHILIPS



Before using your product, read all accompanying safety information

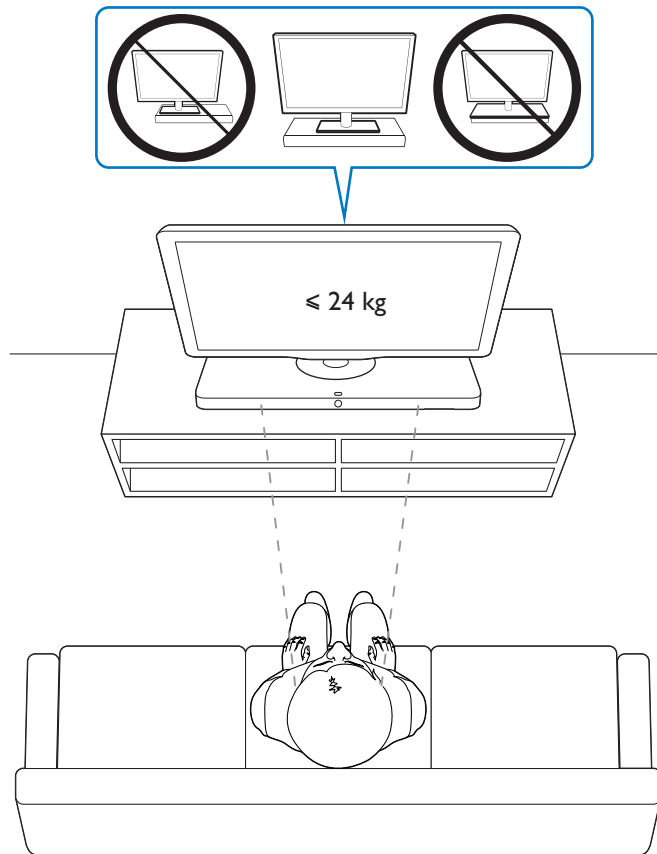


Power Cord



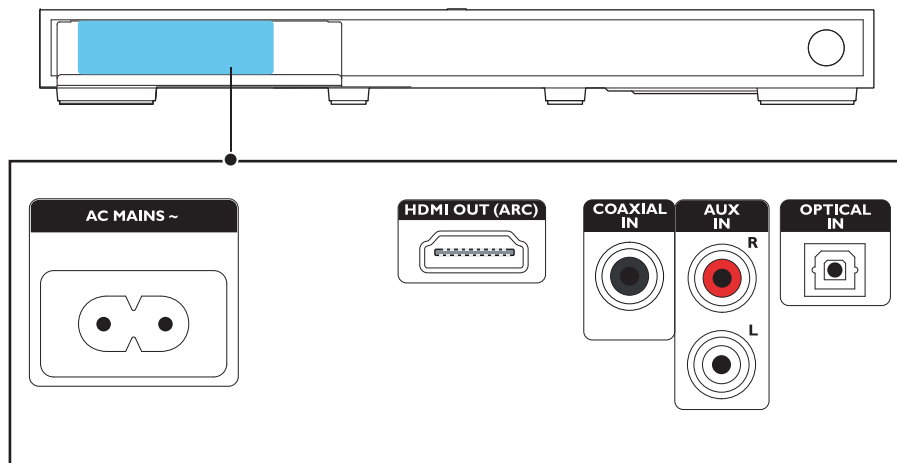
1

Position the SoundStage



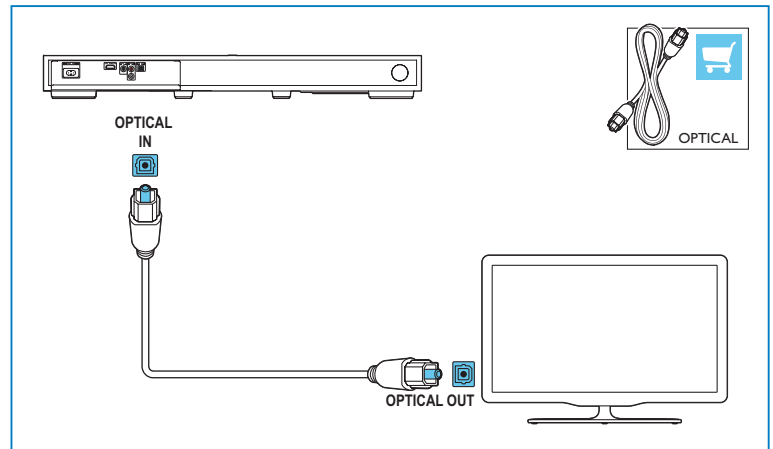
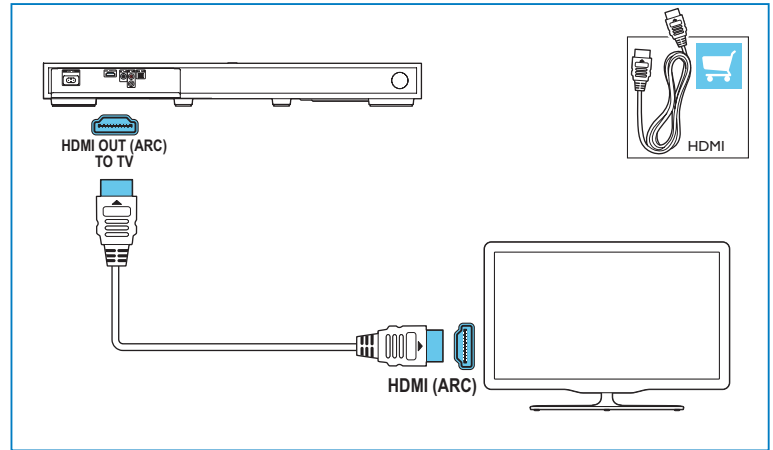
2

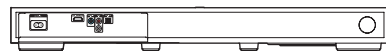
Connect the SoundStage



3

Hear audio from TV in one of the following ways

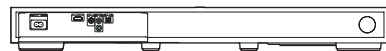
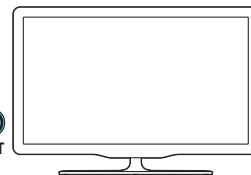




COAXIAL
IN



COAXIAL OUT



AUX
IN



R



L

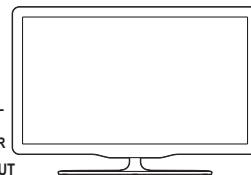


L



R

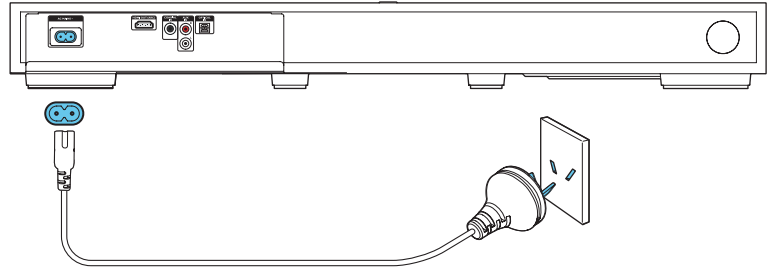
AUDIO OUT



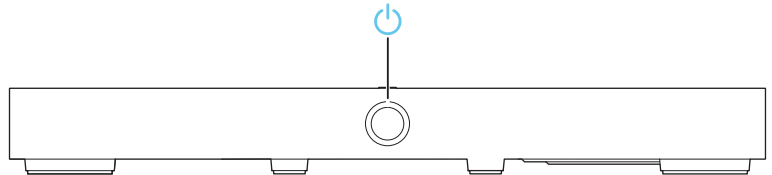
4

Switch on the SoundStage

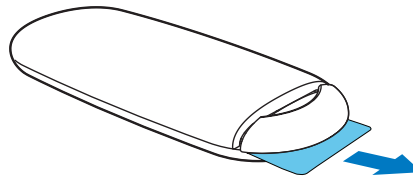
1



2

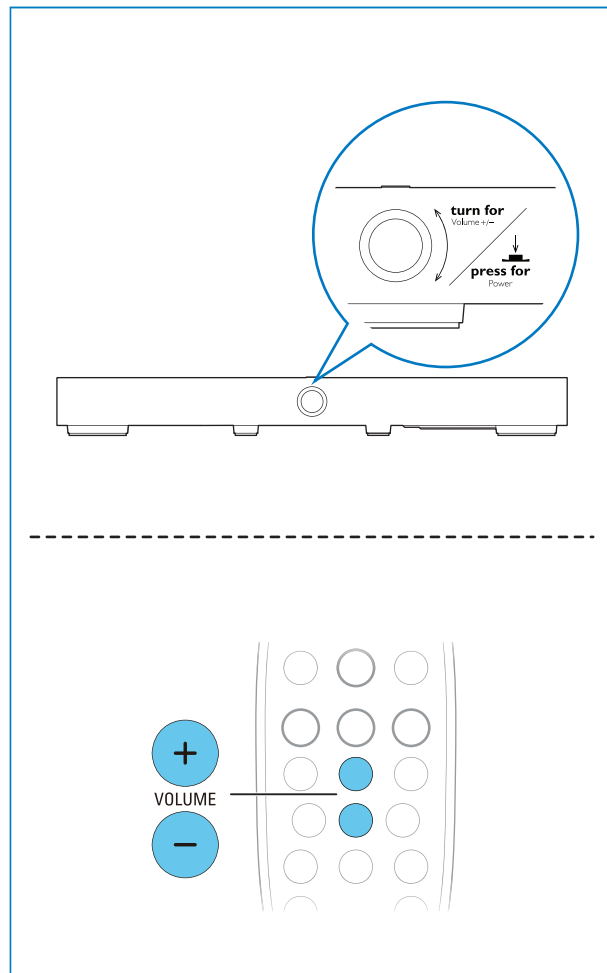


3



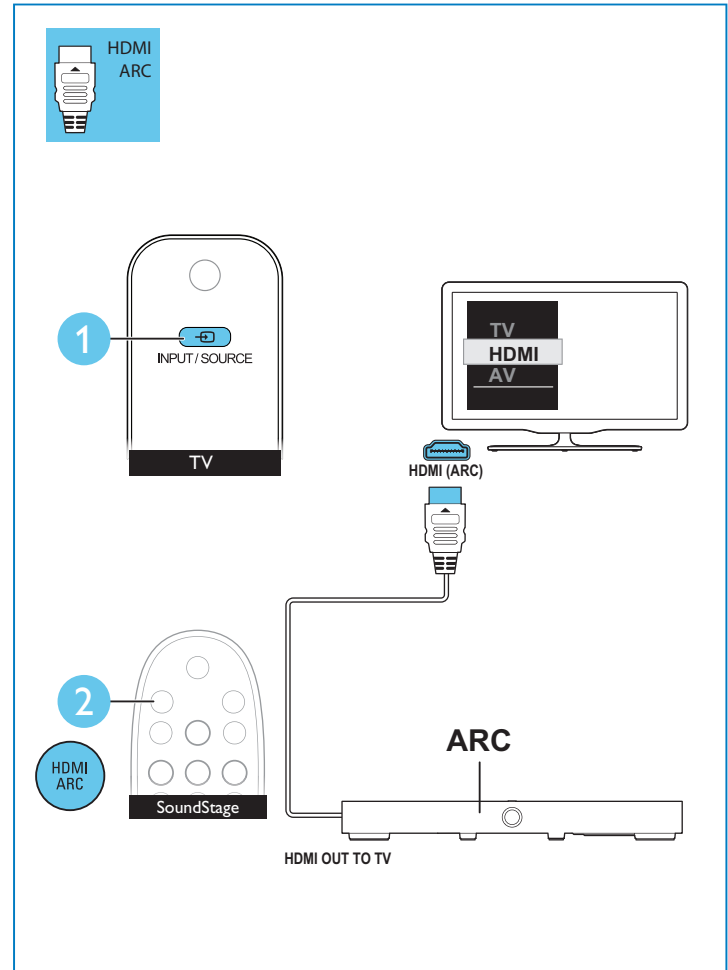
5

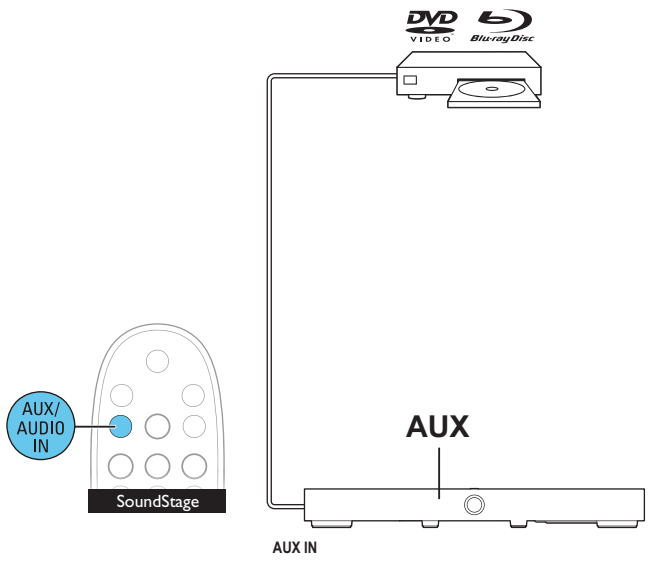
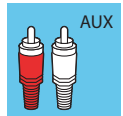
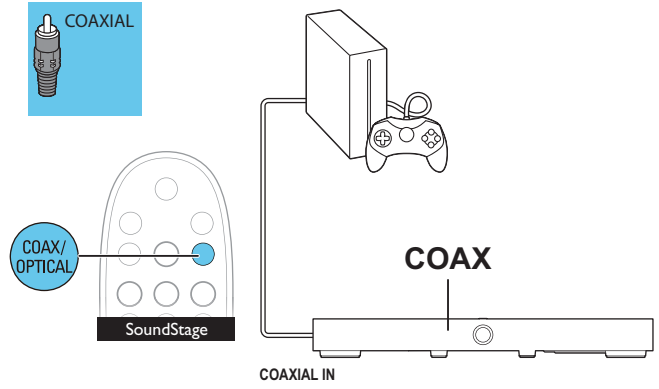
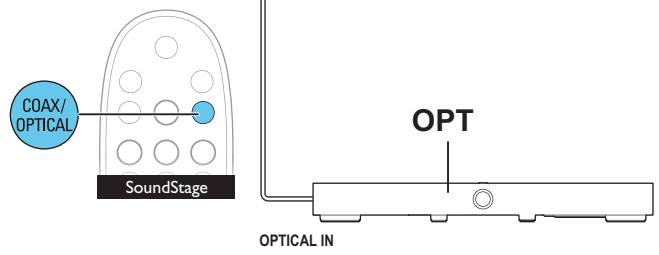
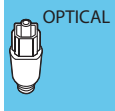
Adjust the volume



6

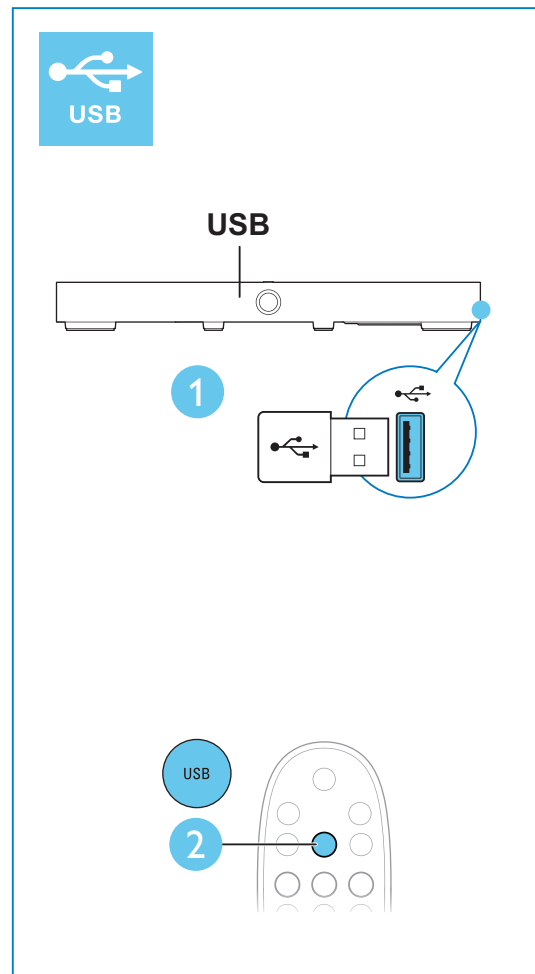
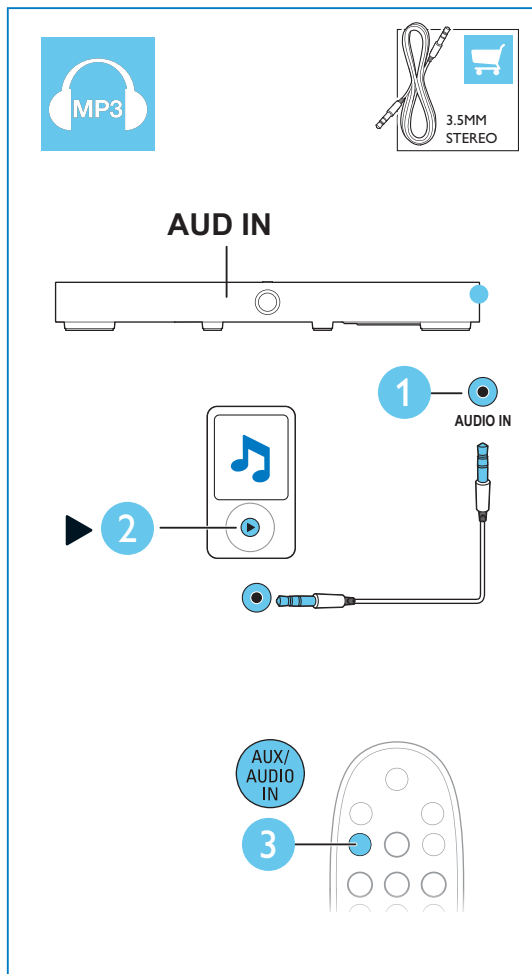
Select the correct audio source





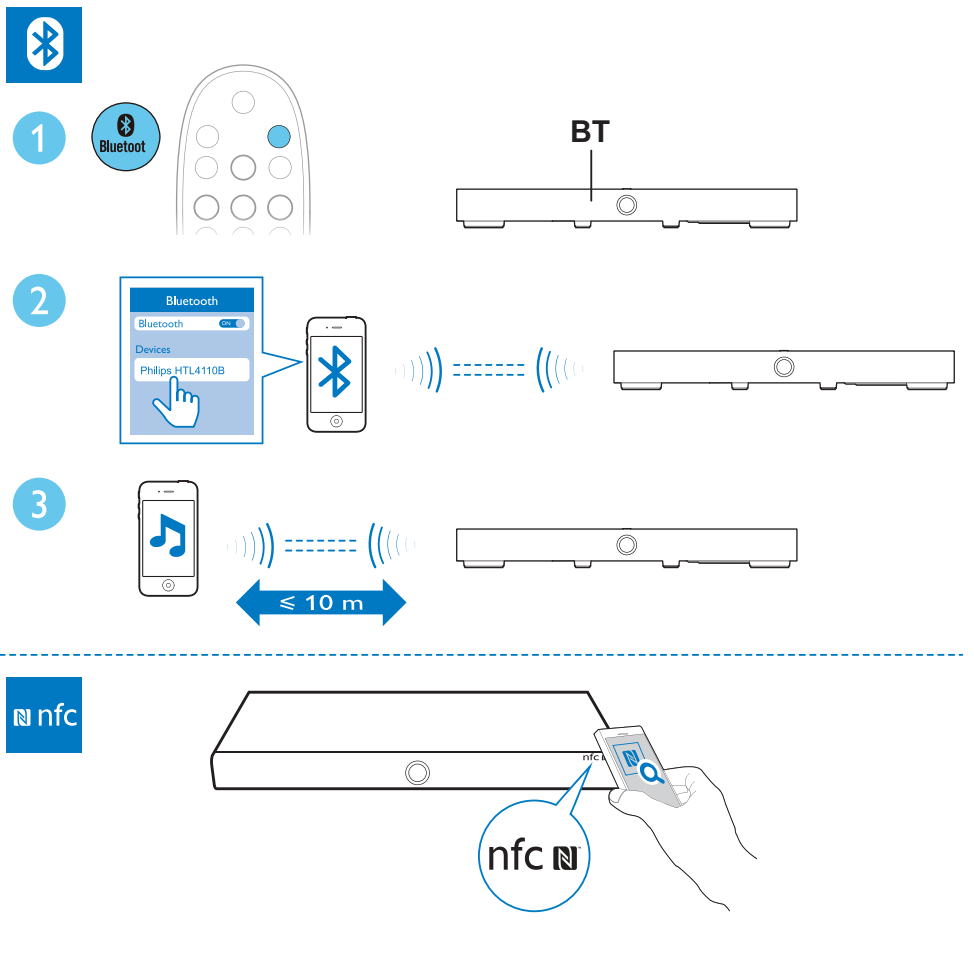
7

Play other devices



8

Play audio through Bluetooth or
connect Bluetooth via NFC





For more information about using this product, visit www.philips.com/support



www.philips.com/support



Manufactured under license from Dolby Laboratories. Dolby and the double-D symbol are trademarks of Dolby Laboratories.



The terms HDMI and HDMI High-Definition Multimedia Interface, and the HDMI Logo are trademarks or registered trademarks of HDMI Licensing LLC in the United States and other countries.



The Bluetooth® word mark and logos are registered trademarks owned by Bluetooth SIG, Inc. and any use of such marks by WOOX Innovations is under license. Other trademarks and trade names are those of their respective owners.



The N Mark is a trademark or registered trademark of NFC Forum, Inc. in the United States and in other countries.



Specifications are subject to change without notice

2014 © WOOX Innovations Limited. All rights reserved.

Philips and the Philips' Shield Emblem are registered trademarks of Koninklijke Philips N.V. and are used by WOOX Innovations Limited under license from Koninklijke Philips N.V.

HTL4110B_79_QSG_V2.0

