

PHILIPS

Portable speaker

AT11/94



User manual

Register your product and get support at
www.philips.com/welcome

Contents

| | | |
|----------|------------------------------------|-----------|
| 1 | Contents | 2 |
| 2 | Important | 3 |
| 3 | Your Portable Speaker | 4 |
| | Introduction | 4 |
| | What's in the box | 4 |
| | Overview of the product | 5 |
| | Get started | 6 |
| | Power supply | 6 |
| | Turn on or off | 6 |
| | Select a source | 6 |
| 4 | Play | 7 |
| | Bluetooth Operating Instruction | 7 |
| | Play from an SD card or USB device | 8 |
| | Listen to FM radio | 9 |
| | Play from an external device | 9 |
| | Adjust volume | 9 |
| 5 | Product information | 10 |
| | Specifications | 10 |
| | USB playability information | 10 |
| 6 | Troubleshooting | 11 |
| | About Bluetooth device | 11 |
| 7 | Notice | 12 |
| | Care of the environment | 12 |
| | Trademark notice | 12 |
| 8 | Warranty | 13 |

Important



Warning

- Never remove the casing of this product.
- Never lubricate any part of this product.
- Never place this product on other electrical equipment.
- Keep this product away from direct sunlight, naked flames or heat.

- Read these instructions.
- Follow all instructions.
- Do not use this apparatus near water.
- Do not block any ventilation openings.
Install in accordance with the manufacturer's instructions.
- Do not install near any heat sources such as radiators, heat registers, stoves, or other apparatus (including amplifiers) that produce heat.
- Only use attachments/accessories specified by the manufacturer.
- Refer all servicing to qualified service personnel. Servicing is required when the apparatus has been damaged in any way, such as liquid has been spilled or objects have fallen into the apparatus, the apparatus has been exposed to rain or moisture, does not operate normally, or has been dropped.
- The battery shall not be exposed to excessive heat such as sunshine, fire or the like.
- Apparatus shall not be exposed to dripping or splashing.
- Do not place any sources of danger on the apparatus (e.g. liquid filled objects, lighted candles).



Note

- The type plate is located on the bottom of the apparatus.

Your Portable Speaker

Congratulations on your purchase, and welcome to Philips! To fully benefit from the support that Philips offers, register your product at www.philips.com/welcome.

Introduction

With this speaker, you can:

- listen to FM radio; and
- enjoy audio from SD/SDHC card, USB devices, Bluetooth-enabled devices, and other external devices.

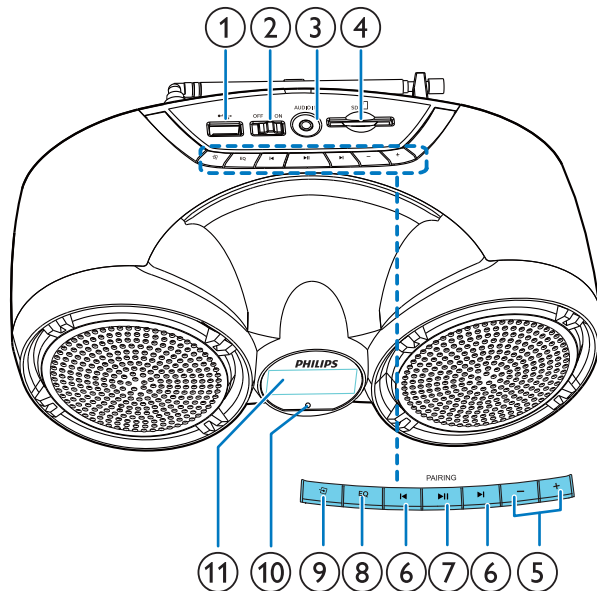
What's in the box

Check and identify the contents of your package:

- Main unit
- USB cable for charging
- User manual

Your Portable Speaker

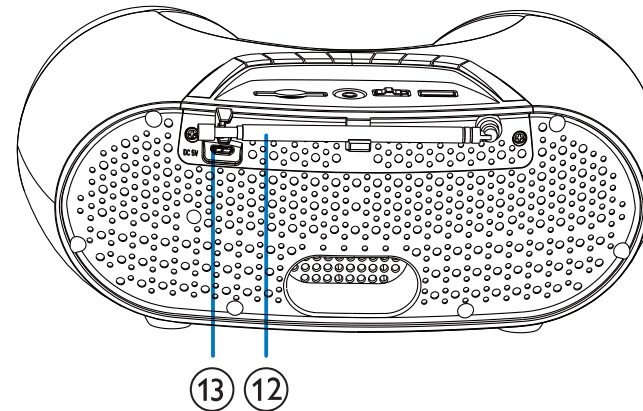
Overview of the product



- ① **USB**
 - Connect a USB storage device.
- ② **OFF/ON switch**
 - Turn the product on or off.
- ③ **AUDIO IN**
 - Connect an external audio device.
- ④ **SD**
 - Connect an SD/SDHC card.
- ⑤ **-/+**
 - Adjust volume.
- ⑥ **⏮ / ⏭**
 - Select a track.
 - Search within play.
 - In FM mode, press to select a preset radio station.

⑦ **⏸ / PAIRING**

- In SD, USB, or Bluetooth mode, press to pause or resume play.
- In Bluetooth mode, press and hold for three seconds to disconnect Bluetooth connection or enter pairing mode.
- In FM mode, press and hold for two seconds to search FM radio stations automatically.



- ⑧ **EQ**
 - Select different sound effect mode.
- ⑨ **SOURCE**
 - Select an audio source.
- ⑩ **Charging indicator**
 - LED turn light during battery charged
- ⑪ **Display panel**
 - Show current status.
- ⑫ **FM antenna**
 - Improve FM radio reception.
- ⑬ **DC 5V**
 - Recharge the built-in battery.

Get started

Always follow the instructions in this chapter in sequence. If you contact Philips, you will be asked for the model and serial number of this apparatus. The model number and serial number are on the bottom of the apparatus. Write the numbers here:

Model No. _____

Serial No. _____

Power supply

The product is operated on the built-in rechargeable battery.

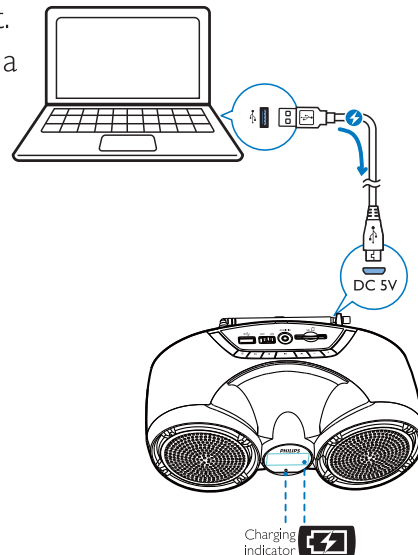
Note


- Rechargeable battery has a limited number of charge cycles. Battery life and number of charge cycles vary by use and settings.

To recharge the built-in battery:

Connect the supplied USB cable to:

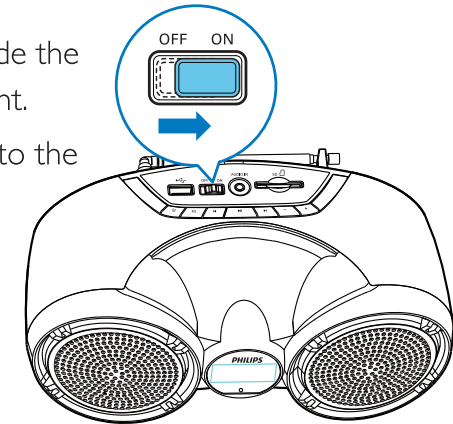
- the **DC 5V** socket on the back of the product.
- the USB socket on a computer.



| Battery status | Battery icon () behavior |
|-----------------------------------|---|
| Low battery | Flashing |
| While charging | Charging indicator on |
| Fully charged or charging stopped | Off |

Turn on or off

- To turn the product on, slide the **OFF/ON** switch to the right.
↳ The product switches to the last selected source.
- To turn the product off, slide the switch to the left.



Switch to ECO standby mode

In SD, USB, Audio-in, or Bluetooth mode, the product switches to ECO standby mode automatically in the following situations:

- Music playback is stopped for 15 minutes;
- There is no Micro SD card, USB device or Audio-in cable connected for 15 minutes; or
- Bluetooth connection is disconnected for 15 minutes.

To return to the SD/USB/Audio-in/Bluetooth mode:

- Press **▶||** to resume playback; or
- Slide the switch to turn the product off first, then turn it on.

Select a source

Press **SOURCE** repeatedly to select an audio source: FM tuner, USB, SD card, Bluetooth, or AUDIO IN.

Bluetooth Operating Instruction

With this product, you can listen to audio from Bluetooth-enabled devices.

Connect a device

Note

- Make sure that your Bluetooth device is compatible with this product.
- Before pairing a device with this product, read its user manual for Bluetooth compatibility.
- Make sure that Bluetooth function is enabled on your device, and your device is set as visible to all other Bluetooth devices.
- Any obstacle between this product and a Bluetooth device can reduce the operational range.
- Keep away from any other electronic device that may cause interference.
- The operational range between this product and a Bluetooth device is approximately 10 meters (30 feet).

- 1** Press **SOURCE** repeatedly to select Bluetooth source.
↳ **[bt]** flashes on the display.
- 2** Press and hold **PAIRING** for 3 seconds to enter Bluetooth pairing mode.
- 3** On your Bluetooth device, enable Bluetooth and search for Bluetooth devices (refer to the user manual of the device).
- 4** For pairing with mobile phone or other Bluetooth devices, search the device named "Philips AT11" and pair it.
If necessary, enter default password "0000".
↳ After successful pairing and connection, the product beeps, and **[bt]** stops flashing.

To disconnect the Bluetooth-enabled device:

- Press and hold **PAIRING** for 3 seconds;
- Disable Bluetooth on your device; or
- Move the device beyond the communication range.
↳ The product beeps, and **[bt]** begins to flash.

To reconnect the Bluetooth-enabled device:

- When this product enters Bluetooth mode, it will reconnect the last connected device automatically; or
- On your Bluetooth device, select "**Philips AT11**" on your Bluetooth menu to start connection.

To connect another Bluetooth-enabled device:

- 1** Press and hold **PAIRING** for 3 seconds to disconnect the currently connected device.
↳ The product enters Bluetooth pairing mode.
- 2** Connect another Bluetooth device.

Play from Bluetooth device

After successful Bluetooth connection, play audio on the Bluetooth device.

- ↳ Audio streams from your Bluetooth device to the product.

Play

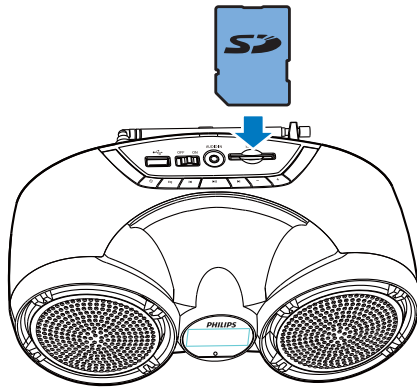
Play from an SD card or USB device

Note


- Make sure that the USB storage device or SD card contains playable audio content.

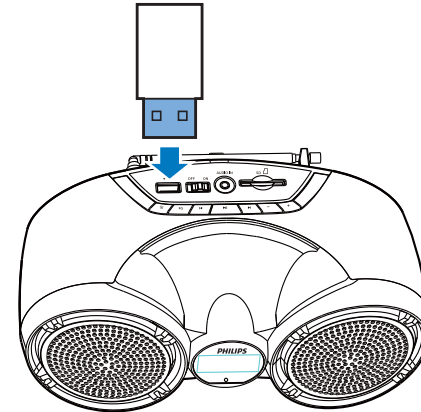
Play from an SD card

- 1 Press **SOURCE** repeatedly to select the SD card source.
↳ [SD] is displayed.
- 2 Insert an SD/SDHC card into the card slot.
↳ Play starts automatically.



Play from a USB storage device


- 1 Press **SOURCE** repeatedly to select the USB source.
↳ [USB] is displayed.
- 2 Insert the USB device into the  socket.
↳ Play starts automatically.



Control play

In USB or SD mode, follow the instructions below to control play.

| Button | Function |
|--------|----------|
|--------|----------|

| | |
|---|---|
|  | Press to skip to the previous or next track. Press and hold to fast forward or fast reverse the track during playback, then release to resume play. |
|---|---|

| | |
|---|--------------------------------------|
|  | Press to start, pause, or stop play. |
|---|--------------------------------------|

| Button | Function |
|--------|----------|
|--------|----------|

ED Press repeatedly to select a EQ effective:

- [drc]: Dynamic range compensation.
- [nor]: normaly dynamic.
- [POP]: Pop sound.
- [ROC]:Rock and Roll.
- [JAZ]: Jazz
- [Cut]: Standard effective (Default EQ).
- Noticed: FM without EQ feature.

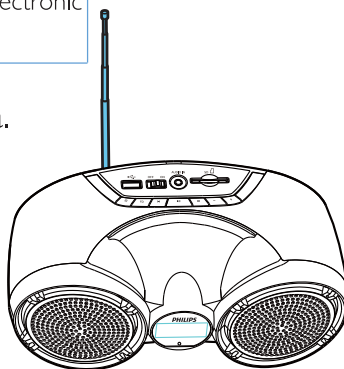
Listen to FM radio

Tune to FM radio stations

Note

- Keep the product away from other electronic devices to avoid radio interference.

- 1 Fully extend the FM antenna.



- 2 Press **SOURCE** repeatedly to select FM tuner source.
- 3 Press and hold **◀/▶** for two seconds.
↳ The product tunes to a station with strong reception automatically.
- 4 Repeat step 3 to tune to more radio stations.

Store FM radio stations automatically

Note

- You can store a maximum of 20 preset radio stations.

In FM tuner mode, press and hold **▶||** for two seconds.
↳ All available radio stations are stored automatically, then the first stored radio station is broadcast.

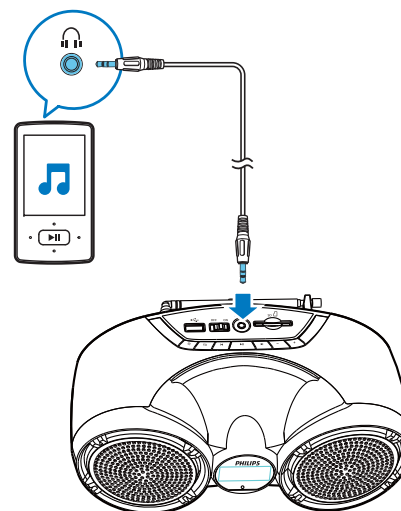
Select a preset radio station

In tuner mode, press **◀/▶** repeatedly to select a previous/next preset station.

Play from an external device

With this product, you can listen to an external audio device such as an MP3 player.

- 1 Press **SOURCE** repeatedly to select AUX source.
- 2 Connect an audio input cable with a 3.5 mm connector on both ends to
 - the **AUDIO IN** socket on the product.
 - the headphone socket on an external device.
- 3 Play audio on the device (refer to its user manual).



Adjust volume

During play, press **-/+** to increase or decrease volume.

Tip

- You can press and hold **-/+** for 2 seconds to increase or decrease volume continuously.

Product information



Note

- Product information is subject to change without prior notice.

Specifications

Amplifier

| | |
|-----------------------|--------------------------|
| Total Output Power | 3 W |
| Frequency Response | 60 -20000 Hz, ± 3 dB |
| Signal to Noise Ratio | >70 dBA |
| Aux Input | 500mV RMS 10kohm |

Tuner (FM)

| | |
|---------------------------|------------------|
| Tuning Range | FM: 87.5-108 MHz |
| Tuning Grid | 100 KHz |
| - Mono, 26dB S/N Ratio | <22 dBf |
| - Stereo, 46dB S/N Ratio | >43 dBf |
| Search Selectivity | >28 dBf |
| Total Harmonic Distortion | <2% |
| Signal to Noise Ratio | >55dB |

Bluetooth

| | |
|--------------------------|-----------------------------|
| Bluetooth Version | V3.0+EDR |
| Bluetooth Frequency Band | 2.402GHz ~ 2.48GHz ISM Band |
| Bluetooth Distance | 10 m (Free space) |

Speaker

| | |
|-------------------|---------------------|
| Speaker Impedance | 3 ohm |
| Speaker Driver | 3" full range |
| Sensitivity | >82dB \pm 3dB/m/W |

General information

| | |
|---|----------------------|
| Power Supply (through Micro USB socket) | 5 V \equiv 1000 mA |
| Built-in Battery (Li-polymer battery) | 3.7 V, 2000 mAh |
| MP3 bit rates | 32 - 320 kbps |
| Eco Standby Power Consumption | <0.5 W |
| Dimensions - Main Unit (W x H x D) | 238 x 108 x 125 mm |
| Weight - Main Unit | 0.69kg |

USB playability information

Compatible USB devices:

- USB flash memory (USB2.0)
- USB flash players (USB2.0)
- memory cards (requires an additional card reader to work with this unit; Some multi-card USB reader may not be supported.)

Supported formats:

- USB or memory file format: FAT12, FAT16, FAT32 (sector size: 512 bytes)
- MP3 bit rate (data rate): 32-320 Kbps and variable bit rate
- Directory nesting up to a maximum of 8 levels
- Number of albums/ folders: maximum 99
- Number of tracks/titles: maximum 999
- File name in Unicode UTF8 (maximum length: 16 bytes)

Troubleshooting



Warning

- Never remove the casing of this device.

To keep the warranty valid, never try to repair the system yourself. If you encounter problems when using this device, check the following points before requesting service. If the problem remains unsolved, go to the Philips Web page (www.philips.com/support). When you contact Philips, make sure that the device is nearby and the model number and serial number are available.

No power

- Recharge the battery.

No sound or poor sound

- Adjust volume on this product.
- Adjust volume on the connected device.
- Check if you have selected the correct audio source.

No response from the product

- Turn on the product.
- Recharge the battery.
- Turn the product off first, then turn it on to activate the product from standby mode.

Poor radio reception

- Increase the distance between the product and other electrical appliances.
- Fully extend and adjust the position of the FM antenna.

USB device not supported

- The USB device is incompatible with the unit. Try another one.

About Bluetooth device

The audio quality is poor after connection with a Bluetooth-enabled device.

- The Bluetooth reception is poor. Move the device closer to this product or remove any obstacle between them.

Fail to search out AT11 on your device for pairing.

- Press and hold **PAIRING** for three seconds, and then try again.

Cannot connect with the device.

- The Bluetooth function of the device is not enabled. Refer to the user manual of the device for how to enable the function.
- This product is already connected with another Bluetooth-enabled device. Disconnect that device and then try again.

The paired device connects and disconnects constantly.

- The Bluetooth reception is poor. Move the device closer to this product or remove any obstacle between them.
- For some devices, Bluetooth connection may be deactivated automatically as a power-saving feature. This does not indicate any malfunction of this product.

Notice

Any changes or modifications made to this device that are not expressly approved by Gibson Innovations may void the user's authority to operate the equipment.

Care of the environment

Disposal of your old product and battery

We strongly advise you to take your product to an official collection point or a Philips service centre to have a professional remove the rechargeable battery. Inform yourself about the local separate collection system for electrical and electronic products and rechargeable batteries.

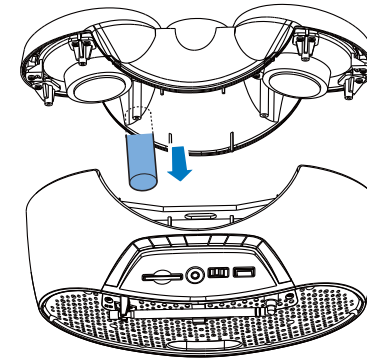
Follow local rules and never dispose of the product and rechargeable batteries with normal household waste. Correct disposal of old products and rechargeable batteries helps prevent negative consequences for the environment and human health.



Caution

- Removal of the built-in battery invalidates the warranty and may destroy the product.

Always bring your product to a professional to remove the built-in battery.



Environmental information

All unnecessary packaging has been omitted. We have tried to make the packaging easy to separate into three materials: cardboard (box), polystyrene foam (buffer) and polyethylene (bags, protective foam sheet.) Your system consists of materials which can be recycled and reused if disassembled by a specialized company. Please observe the local regulations regarding the disposal of packaging materials, exhausted batteries and old equipment.

Trademark notice



The Bluetooth® word mark and logos are registered trademarks owned by Bluetooth SIG, Inc. and any use of such marks by Gibson Innovations Limited is under license. Other trademarks and trade names are those of their respective owners.

Warranty

This Philips Portable Speaker is warranted against any defect due to defective materials or workmanship for 12 months from the date of purchase, should a defect develop during the period of warranty, **Gibson Innovations India Private Limited** undertake to replace the apparatus FREE OF CHARGE at the dealer point from where the product was purchased or any of the Philips Authorised Service Centres.

The warranty is not valid in case :

1. Proof of purchase is not accompanied with this warranty card.
2. The warranty card is not completed immediately after purchase.
3. The apparatus is not used according to this manual.
4. Defects are caused by improper or reckless use.
5. Any repairs are done by persons other than Philips Authorised service centre.
6. The serial number is tampered with.
7. Defects due to causes beyond control like lightning, abnormal voltage, acts of God or while in transit to the purchaser's residence.

All consumables and parts susceptible to normal wear and tear are not covered under warranty.

Model No. _____ Product SI No. _____

Inv. No. _____ Date of Purchase _____

Customer's name and address: _____

Dealer Signature & Stamp

**Question?
Contact
Philips**

Always there to help you
Visit us at www.india.philips.com
Contact at: 1860 180 1111, 1800 102 2929
Or customercare.india@philips.com

Gibson Innovations India Private Limited 4th Floor, Block-1, Vatika Business Park, Sector 49, Sohna Road,
Gurgaon-122018, Haryana, India



The Philips trademark and Philips shield emblem are registered trademarks of koninklijke Philips N.V. used under license.

This product has been manufactured by and sold under the responsibility of Gibson Innovation India Private Ltd. and Gibson Innovations India private Ltd. is the warrantor in relation to this product.

AT11_94_UM_V1.0

