

Register your product and get support at

www.philips.com/welcome

Micro DVD Theater

MCD802



EN User manual 3

DA Brugervejledning 29

DE Benutzerhandbuch 55

ES Manual del usuario 85

FR Mode d'emploi 113

IT Manuale utente 141

NL Gebruiksaanwijzing 169

SV Användarhandbok 197

PHILIPS

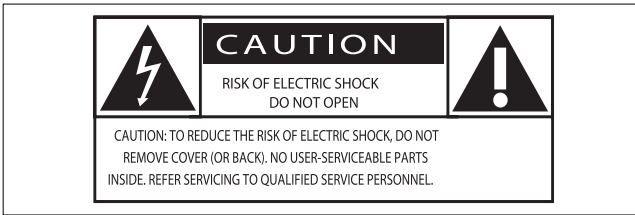
Contents

1	Important	4	8	Listen to the radio	21
	Safety	4		First time tuning	21
	Notice	5		Tune to a radio station	21
2	Your DVD Micro Theater	7		Reinstall radio stations	22
	Introduction	7		Program radio stations manually	22
	What's in the box	7		Select a preset radio station	22
	Overview of the main unit	8		Delete a preset radio station	22
	Overview of the remote control	9	9	Other features	22
3	Connect	11		Set the alarm timer	22
	Connect control cable	11		Set the sleep timer	22
	Connect speakers	11		Karaoke	22
	Connect TV (video)	11		Play from an external device	23
	Connect an external audio system (optional)	13		Create MP3 files	23
	Connect FM antenna	13		Record to a digital recorder	24
	Connect power	14		Listen through headphone	24
4	Get started	14	10	Product information	24
	Install remote control batteries	14		Specifications	24
	Set clock	14		Supported disc formats	25
	Turn on	14		USB playability information	25
	Select the correct source on TV	14		Maintenance	26
	Select the correct TV system	14	11	Troubleshooting	26
	Change system menu language	15	12	Glossary	27
	Turn on Progressive Scan	15			
5	Play	15			
	Play disc	15			
	Play from USB	15			
	Play DivX video	16			
	View pictures	16			
	Play control	16			
	Play options	17			
6	Adjust sound	18			
	Adjust volume	18			
	Boost sound power	18			
	Mute sound	18			
	Select a preset sound effect	18			
	Enhance bass	18			
7	Adjust settings	18			
	General setup	18			
	Audio setup	18			
	Video setup	19			
	Preferences	20			

1 Important

Safety

Know these safety symbols



This 'bolt of lightning' indicates uninsulated material within your unit may cause an electrical shock. For the safety of everyone in your household, please do not remove product covering.

The 'exclamation point' calls attention to features for which you should read the enclosed literature closely to prevent operating and maintenance problems.

WARNING: To reduce the risk of fire or electric shock, this apparatus should not be exposed to rain or moisture and objects filled with liquids, such as vases, should not be placed on this apparatus.

CAUTION: To prevent electric shock, match wide blade of plug to wide slot, fully insert.

Important Safety Instructions

- ① Read these instructions.
- ② Keep these instructions.
- ③ Heed all warnings.
- ④ Follow all instructions.
- ⑤ Do not use this apparatus near water.
- ⑥ Clean only with dry cloth.
- ⑦ Do not block any ventilation openings. Install in accordance with the manufacturer's instructions.
- ⑧ Do not install near any heat sources such as radiators, heat registers, stoves, or other apparatus (including amplifiers) that produce heat.
- ⑨ Protect the power cord from being walked on or pinched, particularly at plugs, convenience receptacles, and the point where they exit from the apparatus.

- ⑩ Only use attachments/accessories specified by the manufacturer.

- ⑪ Use only with the cart, stand, tripod, bracket, or table specified by the manufacturer or sold with the apparatus. When a cart is used, use caution when moving the cart/apparatus combination to avoid injury from tip-over.



- ⑫ Unplug this apparatus during lightning storms or when unused for long periods of time.
- ⑬ Refer all servicing to qualified service personnel. Servicing is required when the apparatus has been damaged in any way, such as power-supply cord or plug is damaged, liquid has been spilled or objects have fallen into the apparatus, the apparatus has been exposed to rain or moisture, does not operate normally, or has been dropped.
- ⑭ **Battery usage CAUTION** – To prevent battery leakage which may result in bodily injury, property damage, or damage to the unit:
 - Install all batteries correctly, + and - as marked on the unit.
 - Do not mix batteries (old and new or carbon and alkaline, etc.).
 - Remove batteries when the unit is not used for a long time.
- ⑮ Apparatus shall not be exposed to dripping or splashing.
- ⑯ Do not place any sources of danger on the apparatus (e.g. liquid filled objects, lighted candles).
- ⑰ This product may contain lead and mercury. Disposal of these materials may be regulated due to environmental considerations. For disposal or recycling information, please contact your local authorities or the Electronic Industries Alliance: www.eiae.org.
- ⑱ Where the MAINS plug or an appliance coupler is used as the disconnect device, the disconnect device shall remain readily operable.
- ⑲ Risk of overheating! Never install this apparatus in a confined space. Always leave a space of at least four inches around this apparatus for ventilation. Ensure curtains or other objects never cover the ventilation slots on this apparatus.



Warning

- Never remove the casing of this apparatus.
- Never lubricate any part of this apparatus.
- Never place this apparatus on other electrical equipment.
- Keep this apparatus away from direct sunlight, naked flames or heat.
- Never look into the laser beam inside this apparatus.
- Ensure that you always have easy access to the power cord, plug or adaptor to disconnect this apparatus from the power.

Hearing safety

Listen at a moderate volume.

- Using headphones at a high volume can impair your hearing. This product can produce sounds in decibel ranges that may cause hearing loss for a normal person, even for exposure less than a minute. The higher decibel ranges are offered for those that may have already experienced some hearing loss.
- Sound can be deceiving. Over time your hearing 'comfort level' adapts to higher volumes of sound. So after prolonged listening, what sounds 'normal' can actually be loud and harmful to your hearing. To guard against this, set your volume to a safe level before your hearing adapts and leave it there.

To establish a safe volume level:

- Set your volume control at a low setting.
- Slowly increase the sound until you can hear it comfortably and clearly, without distortion.

Listen for reasonable periods of time:

- Prolonged exposure to sound, even at normally 'safe' levels, can also cause hearing loss.
- Be sure to use your equipment reasonably and take appropriate breaks.

Be sure to observe the following guidelines when using your headphones.

- Listen at reasonable volumes for reasonable periods of time.
- Be careful not to adjust the volume as your hearing adapts.
- Do not turn up the volume so high that you can't hear what's around you.
- You should use caution or temporarily discontinue use in potentially hazardous situations. Do not use headphones while operating a motorized vehicle, cycling, skateboarding, etc.; it may create a traffic hazard and is illegal in many areas.

Notice

Any changes or modifications made to this device that are not expressly approved by Philips Consumer Lifestyle may void the user's authority to operate the equipment.

Recycling

Your product is designed and manufactured with high quality materials and components, which can be recycled and reused.



When you see the crossed-out wheel bin symbol attached to a product, it means the product is covered by the European Directive 2002/96/EC:



Never dispose of your product with other household waste. Please inform yourself about the local rules on the separate collection of electrical and electronic products. The correct disposal of your old product helps prevent potentially negative consequences on the environment and human health.

Your product contains batteries covered by the European Directive 2006/66/EC, which cannot be disposed of with normal household waste.



Please inform yourself about the local rules on separate collection of batteries. The correct disposal of batteries helps prevent potentially negative consequences on the environment and human health.

Environmental information

All unnecessary packaging has been omitted. We have tried to make the packaging easy to separate into three materials: cardboard (box), polystyrene foam (buffer) and polyethylene (bags, protective foam sheet.)

Your system consists of materials which can be recycled and reused if disassembled by a specialized company. Please observe the local regulations regarding the disposal of packaging materials, exhausted batteries and old equipment.


This product incorporates copyright protection technology




that is protected by method claims of certain U.S. patents and other intellectual property rights owned by Macrovision Corporation and other rights owners. Use of this copyright protection technology must be authorized by Macrovision Corporation, and is intended for home and

other limited viewing uses only unless otherwise authorized by Macrovision Corporation. Reverse engineering or disassembly is prohibited. Consumers should note that not all high definition television sets are fully compatible with this product and may cause artifacts to be displayed in the picture. In case of 525 or 625 progressive scan picture problems, it is recommended that the user switch the connection to the 'standard definition' output.

If there are questions regarding our TV set compatibility with this model 525p and 625p DVD player, please contact our customer service center.


Manufactured under license from  Dolby Laboratories.


"Dolby" and the double-D symbol are trademarks of Dolby Laboratories.


HDMI, and HDMI logo and High-Definition Multimedia Interface are trademarks or registered trademarks of HDMI licensing LLC. 

DivX, DivX Ultra Certified, and associated logos are trademarks of DivX, Inc. and are used under license.  Official DivX® Ultra Certified product.

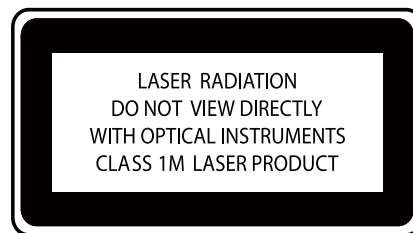
Plays all versions of DivX® video (including DivX® 6) with enhanced playback of DivX® media files and the DivX® Media Format. Plays DivX® video with menus, subtitles and audio tracks.

Manufactured under license under U.S. Patent #'s: 5,451,942; 5,956,674; 5,974,380; 5,978,762; 6,487,535 & other U.S. and worldwide patents issued & pending.  DTS and DTS Digital Surround are registered trademarks and the DTS logos and Symbol are trademarks of DTS, Inc.© 1996-2007 DTS, Inc. All Rights Reserved.

Windows Media and the Windows logo are trademarks, or registered trademarks of Microsoft Corporation in the United States and/or other countries. 

ENERGY STAR and the ENERGY STAR mark are registered U.S. marks. 

This apparatus includes this label:



Norge

Typeskilt finnes på apparatens underside. Observer: Nettbryteren er sekundert innkoplet. Den innebygde nettdelen er derfor ikke frakoplet nettet så lenge apparatet er tilsluttet nettkontakten. For å redusere faren for brann eller elektrisk støt, skal apparatet ikke utsettes for regn eller fuktighet.

2 Your DVD Micro Theater

Congratulations on your purchase, and welcome to Philips! To fully benefit from the support that Philips offers, register your product at www.Philips.com/welcome.

Introduction

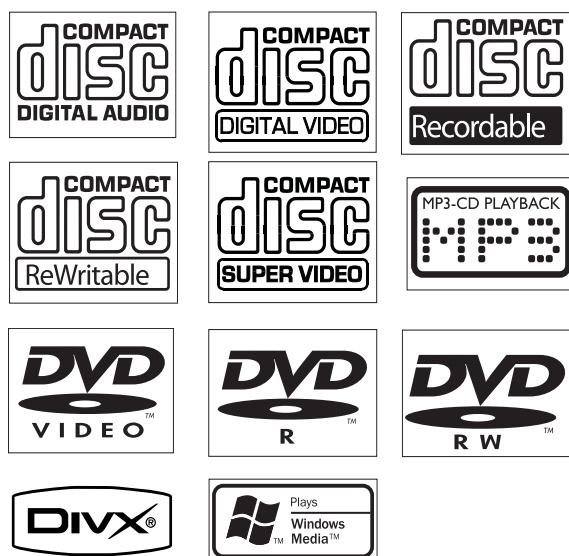
With this unit, you can:

- watch video from DVD/VCD/SVCD or USB devices
- enjoy audio from discs or USB devices
- view photos from discs or USB devices
- tune to radio stations
- enjoy karaoke


You can enrich sound output with these sound effects:

- Digital Sound Control (DSC)
- Dynamic Bass Boost (DBB)

The unit supports the these media/disc formats:



You can play DVD discs with the following region codes:

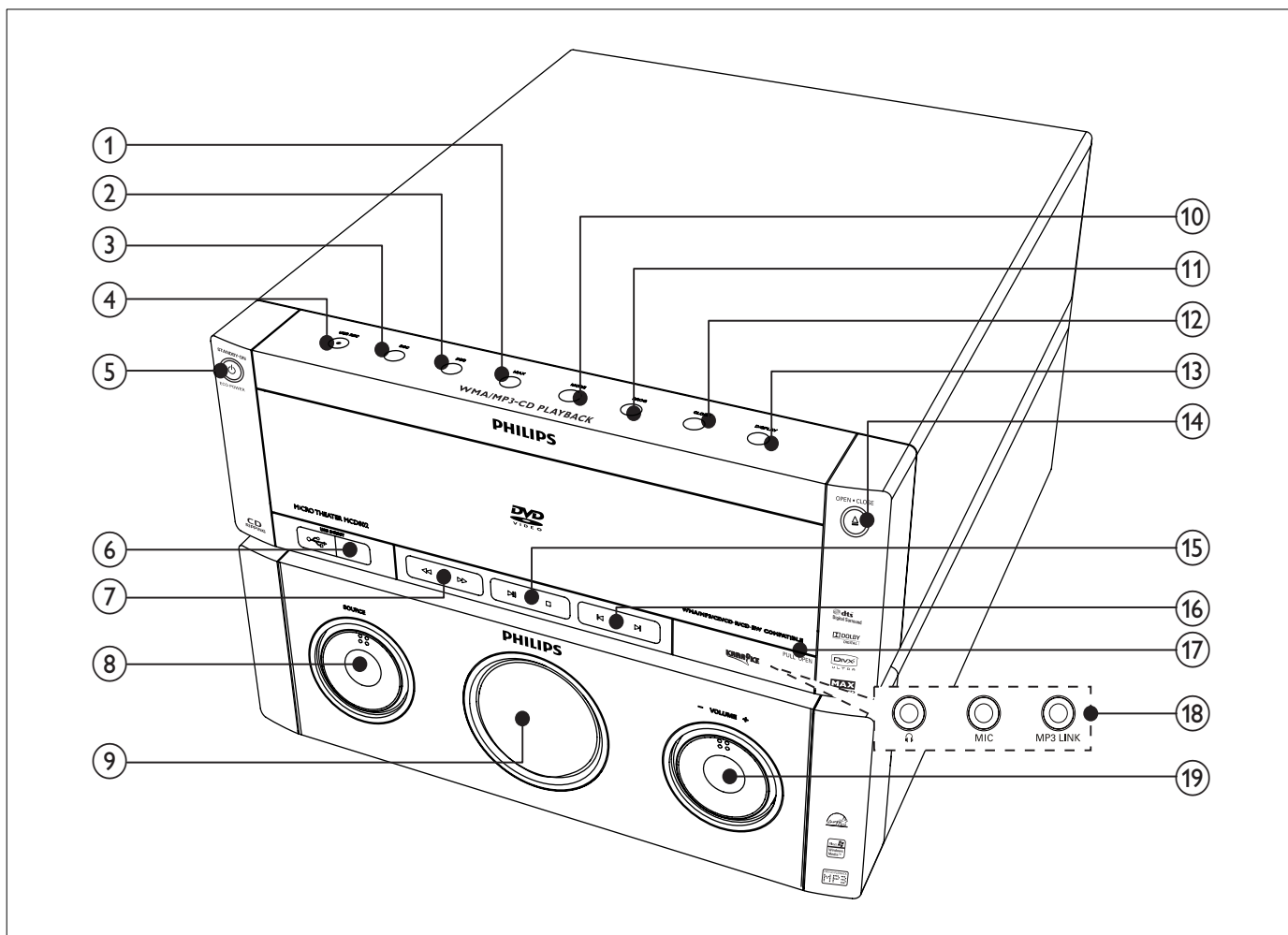
DVD region code	Countries
 	Europe

What's in the box

Check and identify the contents of your package:


- Main unit
- Loudspeaker boxes x 2
- Composite video cable (yellow)
- Control cable
- Power cord
- Remote control with batteries
- FM wire antenna
- User manual
- Quick start guide

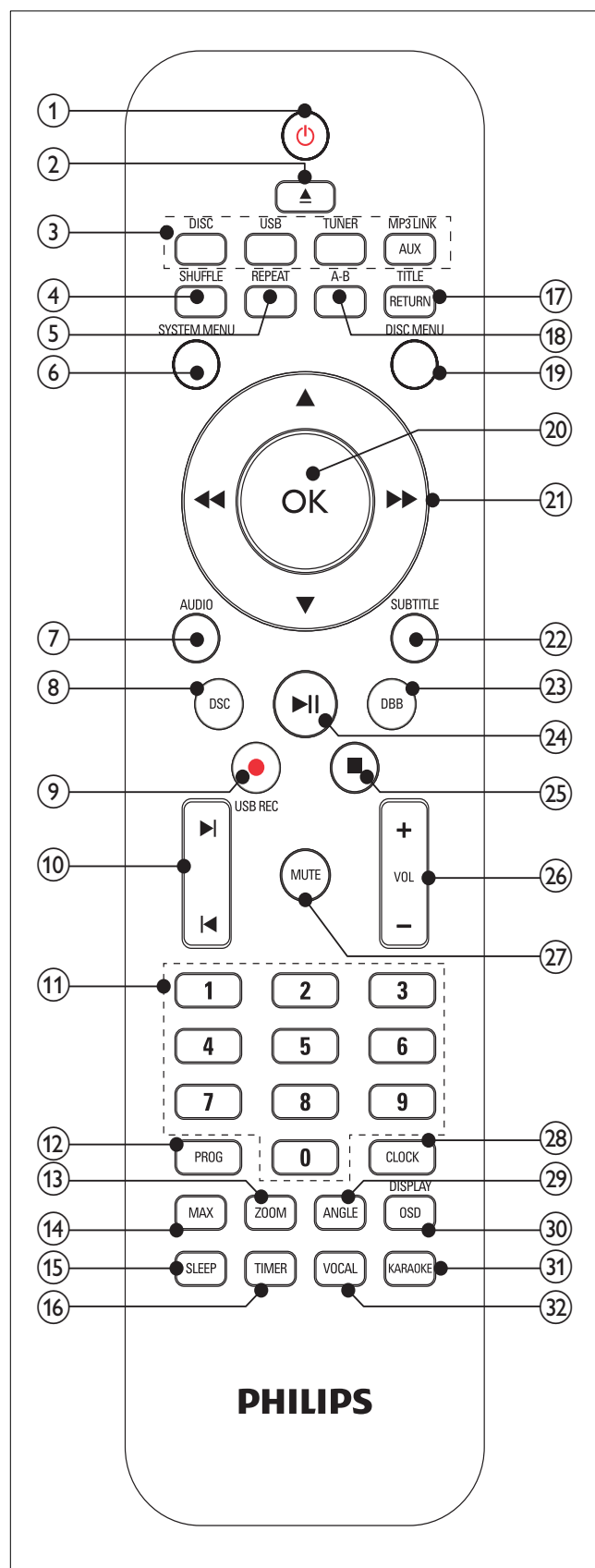
Overview of the main unit




- | | |
|--|---|
| <p>① MAX</p> <ul style="list-style-type: none"> • Turn on or off instant power boost for sound. <p>② DBB</p> <ul style="list-style-type: none"> • Turns on or off dynamic bass enhancement. <p>③ DSC</p> <ul style="list-style-type: none"> • Select a preset sound setting. <p>④ USB REC ●</p> <ul style="list-style-type: none"> • Access the menu to create MP3. <p>⑤ STANDBY-ON/ECO POWER</p> <ul style="list-style-type: none"> • Turn on the unit, switch to standby mode, or switch to Eco Power Standby. <p>⑥ USB DIRECT </p> <ul style="list-style-type: none"> • Jack for a USB mass storage device. <p>⑦ </p> <ul style="list-style-type: none"> • Search within a track/disc. • Tune to a radio station. <p>⑧ SOURCE</p> <ul style="list-style-type: none"> • Select a source: DISC, USB, FM, AUX or MP3 LINK. | <p>⑨ Display panel</p> <ul style="list-style-type: none"> • Show current status. <p>⑩ MODE</p> <ul style="list-style-type: none"> • Select repeat play or random play. <p>⑪ PROG</p> <ul style="list-style-type: none"> • Program tracks. • Program radio stations. <p>⑫ CLOCK</p> <ul style="list-style-type: none"> • Set the clock. <p>⑬ DISPLAY</p> <ul style="list-style-type: none"> • During play, select display information. <p>⑭ OPEN·CLOSE ▲</p> <ul style="list-style-type: none"> • Open or close the disc compartment. <p>⑮ </p> <ul style="list-style-type: none"> • Start or pause play. • Stop play or erase a program. <p>⑯ </p> <ul style="list-style-type: none"> • Skip to the previous/next track/title/ chapter. • Select a preset radio station. |
|--|---|

Overview of the remote control

- ①⑦ **PULL OPEN**
 - Pull to open the sockets cover.
- ①⑧ **Sockets**
 -  Connect headphones
 - **MIC** Connect a microphone.
 - **MP3 LINK** Audio input jack (3.5mm) for an external audio device.
- ①⑨ **VOLUME +/-**
 - Adjust volume.



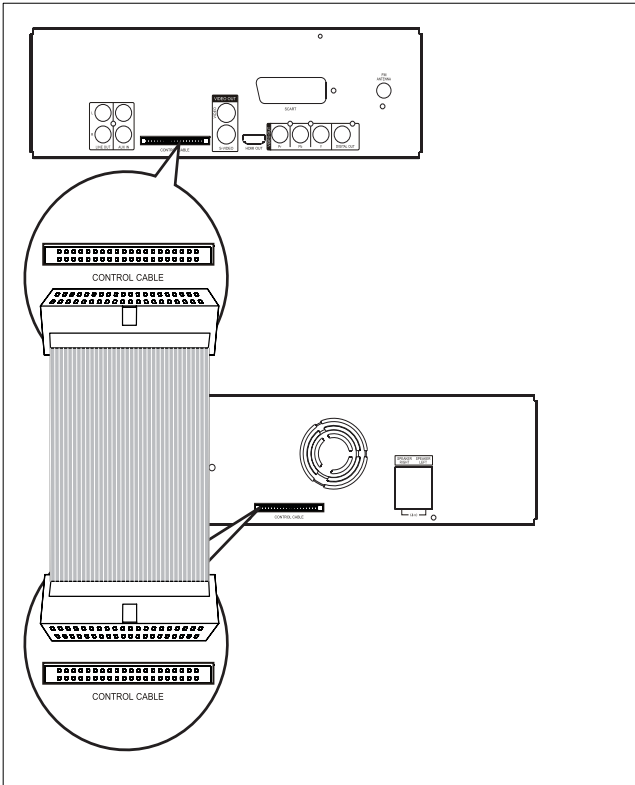
- ① 
 - Turn on the unit, switch to standby mode, or switch to Eco Power Standby.

- ② ▲
 - Open or close the disc compartment.
- ③ **Source selection keys**
 - Select a source: DISC, FM, USB, AUX or MP3 LINK.
- ④ **SHUFFLE**
 - Play tracks randomly.
- ⑤ **REPEAT**
 - Select a repeat play mode.
- ⑥ **SYSTEM MENU**
 - Access or exit the system menu.
- ⑦ **AUDIO**
 - For DVD, select an audio language.
 - For VCD, select stereo, mono left, mono right, or mix-mono output.
- ⑧ **DSC**
 - Select a preset sound setting.
- ⑨ **USB REC ●**
 - Access the menu to create MP3.
- ⑩ ◀▶
 - Skip to the previous/next title/chapter/track.
 - Select a preset radio station.
- ⑪ **Numeric keypad**
 - Input a number.
 - Select a track/title/chapter directly.
- ⑫ **PROG**
 - Program tracks/titles/chapters.
 - Program radio stations.
- ⑬ **ZOOM**
 - Zoom in or out a picture/video image on the TV screen.
- ⑭ **MAX**
 - Turn on or off instant power boost for sound.
- ⑮ **SLEEP**
 - Set the sleep timer.
- ⑯ **TIMER**
 - Set the alarm timer.
- ⑰ **RETURN/TITLE**
 - For DVD, return to the title menu or previous menu.
 - For VCD 2.0 or SVCD with PBC turned on, return to the PBC menu.
- ⑱ **A-B**
 - Repeat a specific section within a track/title/chapter.
- ⑲ **DISC MENU**
 - For DVD, access or exit the disc menu.
 - For video discs with playback control(PBC): turn on/off PBC.
- ⑳ **OK**
 - Confirm a selection.
- ㉑ ◀◀▶▶
 - Search fast backward or fast forward.
 - Navigate through the menu.
 - Tune to a radio station.
- ▲/▼
 - Navigate through the menu.
 - For video discs: select a slow play mode.
 - For pictures: zoom in/out.
- ㉒ **SUBTITLE**
 - Select a subtitle language.
- ㉓ **DBB**
 - Turns on or off dynamic bass enhancement.
- ㉔ ▶||
 - Start or pause play.
- ㉕ ■
 - Stop play or erase a program.
- ㉖ **VOL +/-**
 - Adjust volume.
- ㉗ **MUTE**
 - Mute or restore volume.
- ㉘ **CLOCK**
 - Set the clock.
- ㉙ **ANGLE**
 - Select a viewing angle of a DVD
- ㉚ **OSD/DISPLAY**
 - Display play information on a connected TV.
- ㉛ **KARAOKE**
 - Access or exit the karaoke menu.
- ㉜ **VOCAL**
 - Change the audio channel of a karaoke disc.

3 Connect

Connect control cable

- 1 Connect the supplied control cable to the **CONTROL CABLE** jacks on the main unit.

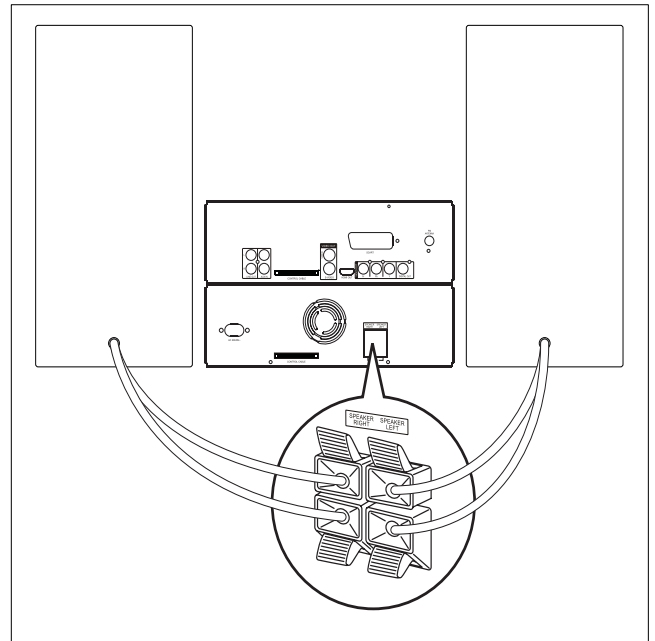
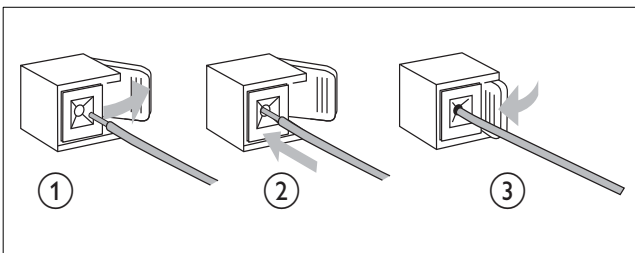


Connect speakers

Note

- Ensure that the colors of the speaker wires and terminals are matched.

- 1 Hold down the socket flap.
- 2 Insert the stripped part of the wire completely.
 - Insert the right speaker wires to "SPEAKER RIGHT", left speaker wires to "SPEAKER LEFT".
- 3 Release the socket flap.



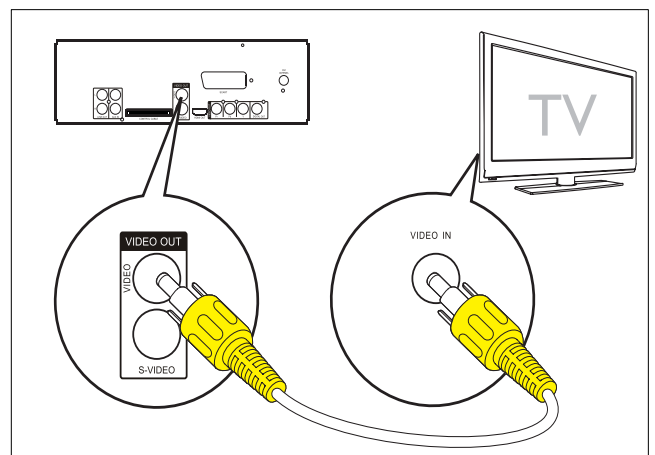
Connect TV (video)

- Option 1: Connect through composite video socket (for a standard TV).
- Option 2: Connect through S-Video socket (for a standard TV).
- Option 3: Connect through SCART socket (for a standard TV).
- Option 4: Connect through component video sockets (for a standard TV or Progressive Scan TV).
- Option 5: Connect through HDMI socket (for a HDMI, DVI or HDCP-compliant TV).

You must connect this unit directly to a TV.

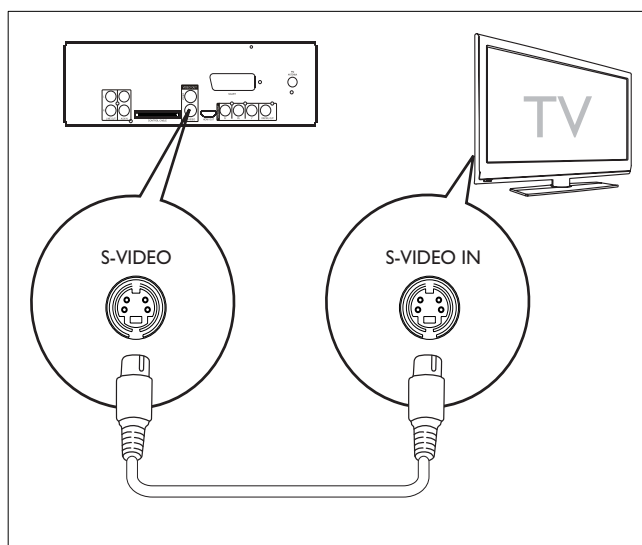
Option 1: Connect through composite video socket

- 1 Connect the supplied composite video cable to:
 - the **VIDEO** socket on this unit.
 - the video input socket on the TV.



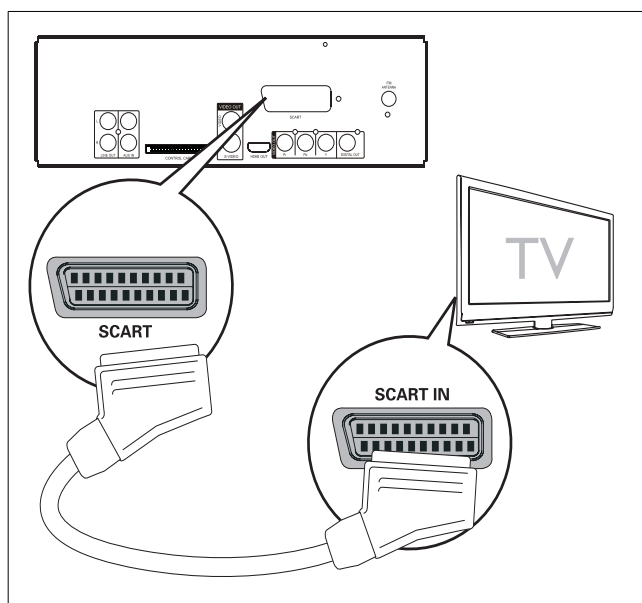
Option 2: Connect through S-Video socket

- 1 Connect an S-video cable (not supplied) to:
 - the **S-VIDEO** socket on this unit.
 - the S-Video socket on the TV.



Option 3: Connect through scart socket

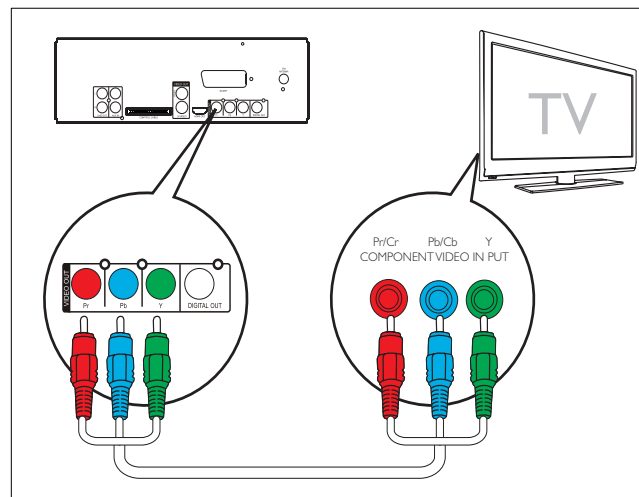
- 1 Connect a scart cable (not supplied) to:
 - the **SCART** socket on this unit.
 - the scart socket on the TV.



Option 4: Connect through component video sockets

Connect a progressive scan TV through component video for higher quality video.

- 1 Connect component video cables (red/blue/green - not supplied) to:
 - the **VIDEO OUT (Pr Pb Y)** sockets on this unit.
 - the component input sockets on the TV.



Note

- If your TV does not support progressive scan, you cannot view the picture.
- For how to activate progressive scan on your TV, refer to the TV user manual.

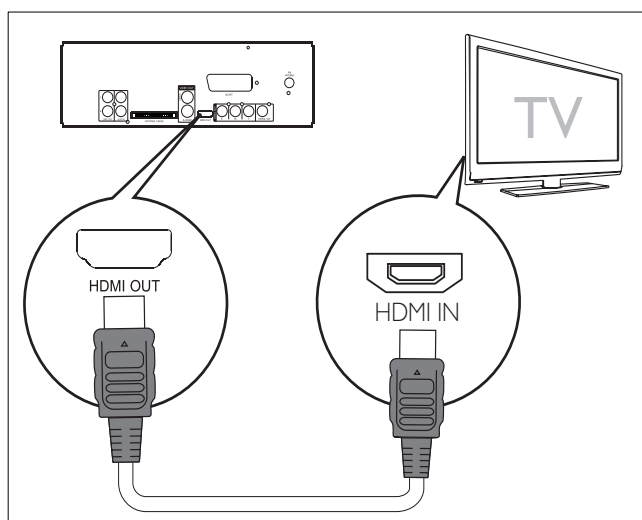
Option 5: Connect through HDMI socket

Connect HDMI (High Definition Multimedia Interface), DVI (Digital Visual Interface), or HDCP (High-bandwidth Digital Contents Protection)-compliant TVs through HDMI for the best picture quality. This connection transmits both video and audio signals. Through this connection, you can watch DVDs or Blu-ray discs that contain HD (High-Definition) content.

Note

- Some TVs do not support HDMI audio transmission.

- 1 Connect an HDMI cable (not supplied) to:
- the **HDMI OUT** socket on this unit.
 - the HDMI socket on the TV.



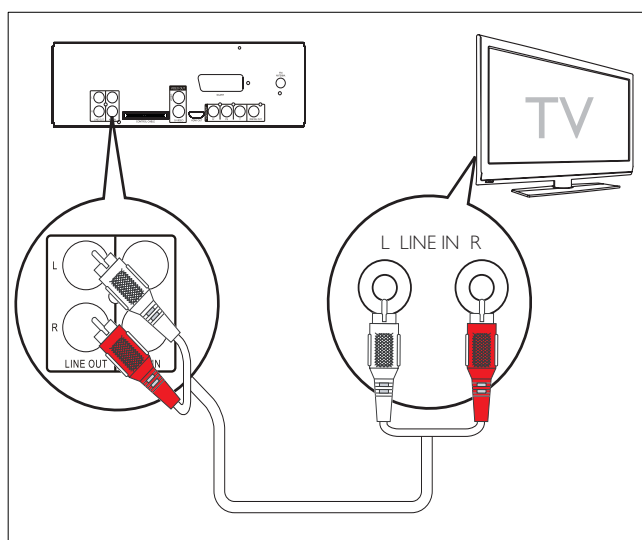
Tip

- If your TV has only a DVI connection, connect through a HDMI/DVI adaptor. An extra audio connection is needed to complete this connection.

Connect an external audio system (optional)

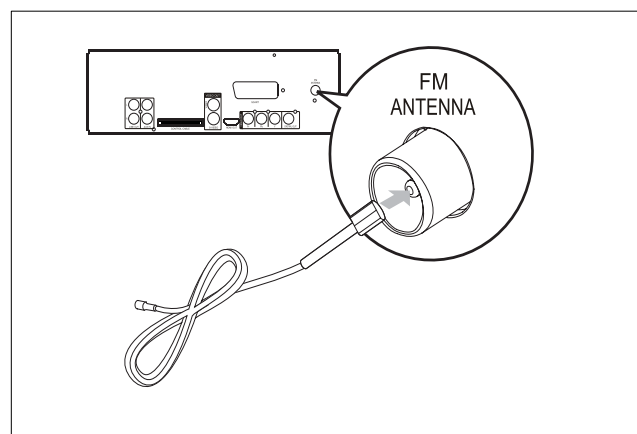
You can connect this unit to an external audio system to listen to the sound.

- 1 connect audio cables (red/white) to:
- the **LINE OUT L/R** sockets on this unit.
 - the audio input sockets on the external audio system.



Connect FM antenna

- 1 Connect the supplied FM wire antenna to the **FM ANTENNA** socket on the unit.



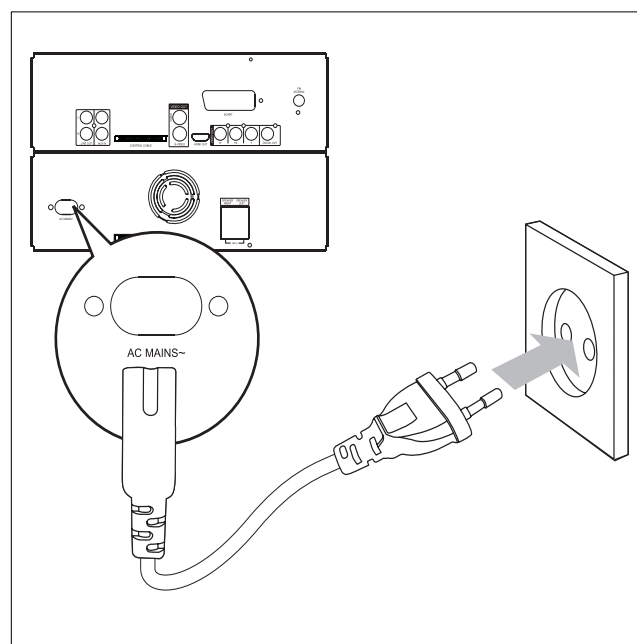
Connect power



Caution

- Risk of product damage! Ensure that the power supply voltage corresponds to the voltage printed on the back or the underside of the unit.
- Risk of electric shock! When you unplug the AC power cord, always pull the plug from the socket. Never pull the cord.
- Before connecting the AC power cord, ensure you have completed all other connections.

- 1 Connect the power cord to the **AC MAINS~** jack on the main unit.
- 2 Connect the power plug to the wall outlet.



4 Get started



Caution

- Use of controls or adjustments or performance of procedures other than herein may result in hazardous radiation exposure or other unsafe operation.

Always follow the instructions in this chapter in sequence.

If you contact Philips, you will be asked for the model and serial number of this apparatus. The model number and serial number are on the back of the apparatus. Write the numbers here:

Model No. _____

Serial No. _____

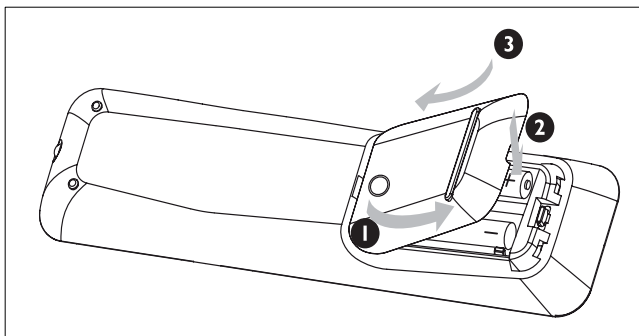
Install remote control batteries



Caution

- Risk of explosion! Keep batteries away from heat, sunshine or fire. Never discard batteries in fire.
- Risk of decreased battery life! Never mix different brands or types of batteries.
- Risk of product damage! When the remote control is not used for long periods, remove the batteries.

- 1 Open the battery compartment.
- 2 Insert 2 AAA batteries with correct polarity (+/-) as indicated.
- 3 Close the battery compartment.



Set clock

- 1 In the standby mode, press **CLOCK** to activate the clock setting mode.
 - ↳ The time digits are displayed and begin to blink.
 - ↳ If the time digits are not displayed, press and hold **⏻** for more than 2 seconds to switch to standby mode, then repeat step 1.
- 2 Press **⏪** to set the hour.

- 3 Press **⏩** to set the minute.
- 4 Press and hold **CLOCK** to select 12-hour or 24-hour format.
- 5 Press **CLOCK** to confirm.

Turn on

- 1 Press **⏻**.
 - ↳ The unit switches to the last selected source.

Switch to standby

- 1 Press and hold **⏻** for more than 2 seconds to switch the unit to standby mode.
 - ↳ The clock (if set) appears on the display panel.

To switch the unit to Eco Power Standby mode:

- 1 During play, press **⏻**.
 - ↳ The backlight on the display panel turns off.

Select the correct source on TV

- 1 Turn on the apparatus.
- 2 Press **DISC** to select the disc source.
- 3 Turn on the TV and then select the correct video source.
 - ↳ You should see the blue Philips DVD background screen.



Tip

- See the TV user manual for details of how to select the correct video source.

Select the correct TV system

Change this setting if the video does not appear correctly. By default, this setting matches the most common setting for TVs in your country.

- 1 Press **SYSTEM MENU**.
- 2 Press **▼** to select **[Video Setup]>[TV Type]** and then press **▶▶**.
- 3 Select a setting and then press **OK**.
 - **[PAL]** - For TV with PAL color system.
 - **[NTSC]** - For TV with NTSC color system.
 - **[Multi]** - For TV that is compatible with both PAL and NTSC.
- 4 To exit the menu, press **SYSTEM MENU**.

Change system menu language

- 1 Press **SYSTEM MENU**.
- 2 Select [**General Setup**] > [**OSD Language**], and then press **▶▶**.
- 3 Select a language, then press **OK**.
- 4 To exit the menu, press **SYSTEM MENU**.

Turn on Progressive Scan

If the TV supports progressive scan output, you can connect this unit and the TV through component video connection. (see 'Connect TV (video)' > 'Option 4: Connect through component video sockets').

- 1 Turn on the TV and ensure that the TV progressive scan mode is deactivated (see the TV user manual).
- 2 Switch the TV to the correct viewing channel for this unit.
- 3 Press **DISC**.
- 4 Press **SYSTEM MENU**.
- 5 Press **▼** to select [**Video Setup**], then press **▶▶**.
- 6 Select [**Progressive**] > [**On**], then press **OK**.
↳ A warning message is displayed.
- 7 To proceed, select [**Ok**] and press **OK**.
↳ The progressive setup is complete.

Note

- If a blank/distorted screen is displayed, wait for 15 seconds for the auto recover.
- If no picture displayed, turn off the progressive scan mode as follows: 1) Press **▲** to open the disc compartment. 2) Press **◀◀** 3) Press **AUDIO**.

- 8 Press **SYSTEM MENU** to exit.
 - You can now turn on the progressive scan mode on the TV.

Note

- During play, when progressive scan mode is on for both this unit and the TV, distorted picture may display. Turn off the progressive scan feature on both this unit and the TV.

5 Play

Play disc



Caution

- Never look at the laser beam inside the unit.
- Risk of product damage! Never play discs with accessories such as disc stabilizer rings or disc treatment sheets.
- Do not push on the disc tray or put any objects other than discs on the disc tray.

- 1 Press **DISC** to select the disc source.
- 2 Press **▲** to open the disc compartment.
- 3 Insert a disc with the printed side facing up, then close the disc compartment.
 - ↳ Play starts automatically.
 - If play does not start, select an option from the disc menu, and then press **▶▶**.
 - To pause/resume play, press **▶||**.
 - To stop play, press **■**.
 - For MP3/WMA disc: to select an album, press **▲/▼**.
 - To skip to a track/file/chapter, press **◀/▶**.
 - To fast backward/forward, press and hold **◀◀/▶▶**.



Note

- This feature is only available for DVDs/DivX videos recorded with multiple subtitle languages.
 - During play, press **SUBTITLE** repeatedly to select a subtitle language.

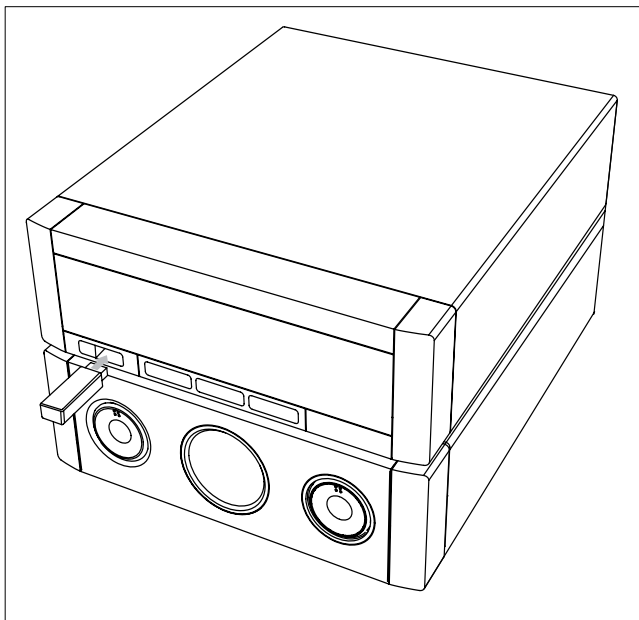
Play from USB



Note

- Ensure that the USB device contains playable content. (see "USB playability information")

- 1 Flip open the USB socket cover on the front panel.
- 2 Insert the USB plug of a USB device into the USB socket.



- 3 Press **USB** to select the USB source.
 - ↳ The total number of tracks is displayed.
 - ↳ Play starts automatically.
 - To pause/resume play, press **▶||**.
 - To stop play, press **■**.
 - To select an album/folder, press **▲/▼**.
 - To skip to a track/file, press **◀/▶**.
 - To fast backward/forward, press and hold **◀◀/▶▶**.

Play DivX video

You can play DivX files copied onto a CD-R/RW, recordable DVD or USB device.

- 1 Insert a disc or connect a USB device.
- 2 Select a source:
 - For discs, press **DISC**.
 - For USB devices, press **USB**.
- 3 Select a file to play and press **OK**.
 - To stop play, press **■**.
 - To pause or resume play, press **▶||**.
 - To change a subtitle language, press **SUBTITLE**.



Note

- Subtitle files with the following filename extensions (.srt, .smi, .sub, .ssa, .ass) are supported but do not appear on the file navigation menu.
- The subtitle filename has to be the same as the file name of the video.
- The subtitle can only be displayed up to an average of 45 characters.

View pictures

You can view JPEG files as a slide show.

- 1 Insert a picture disc or connect a USB device.
- 2 Select a source:
 - For discs, press **DISC**.
 - For USB devices, press **USB**.
- 3 For a JPEG picture disc, press **▶||** to start the slide show.
 - ↳ For a Kodak Picture CD, the slide show starts automatically.

Preview pictures

- 1 During play, press **OSD/DISPLAY**.
 - ↳ The thumbnails of 12 pictures are displayed.
- 2 Press **◀/▶** to skip to the previous/next page.
 - To display a picture, select a picture, and then press **OK**.
 - Press **RETURN/TITLE** to return to the picture CD menu.

Rotate picture

- 1 During play, press **▲/▼** to rotate the picture anti-clockwise/clockwise.

Play control

Access the disc menu

When you load a DVD/(S)VCD disc, a menu may be displayed on the TV screen.

- 1 During play, press **DISC MENU** to access or exit the disc menu.

For VCD with PlayBack Control (PBC) feature (version 2.0 only):

The PBC feature allows you to play VCD interactively according to the menu screen.

- 1 During play, press **DISC MENU** to turn on or off playback control.
 - ↳ When PBC is turned on, the menu screen is displayed.
 - ↳ When PBC is turned off, normal play is resumed.
 - During play, when PBC is turned on, press **RETURN/TITLE** to return to the PBC menu screen.

Select repeat/shuffle play options

Repeat play

- 1 During play, press **REPEAT** repeatedly to select an option.
↳ The selected option is displayed for a while.
- 2 To resume normal play, press **REPEAT** repeatedly until [**Repeat Off**] is displayed.

Random play

- 1 During play, press **SHUFFLE**.
- 2 To resume normal play, press **SHUFFLE** again.

Repeat A-B (DVD/VCD/CD/MP3/WMA)

- 1 During music or video play, press **A-B** at the start point.
- 2 Press **A-B** at the end point.
↳ The selected section starts to play repeatedly.
 - To cancel repeat play, press **A-B** again.

Note

- The section A and B can be set only within the same track/title.

Play options

Display disc play information

- 1 During play, press **OSD/DISPLAY** to display the information menu.
- 2 Press **▲/▼** to view the information.

To control play through the menu:

- 1 Press **▲/▼** to select an item, and then press **OK**.
- 2 Use the numeric keypad to input the number/time or press **▲/▼** to select an option.
- 3 Press **OK** to confirm.

Program tracks/titles

Note

- This feature is unavailable for MP3/WMA discs.

- 1 In DISC mode, press **PROG** to enter the program mode.
- 2 Press **◀▶▶▶/▲/▼** to select a preset number.

- 3 Use the numeric keypad to input the track/title number.
 - To skip to the next/previous page, press **▶/◀**.
 - To clear a programmed track/title, select the preset number, and then press **OK**.
 - To exit the program mode, press **PROG**.
- 4 When the program is complete, select [**Start**] (start), and then press **OK** to start play.

Zoom in/out image

- 1 During video/picture play, press **ZOOM** repeatedly to zoom in/out the image.
 - When the image is zoomed in, you can press **◀◀▶▶/▲/▼** to pan through the image.

Change the audio channel

Note

- This feature is only available for VCD/DivX play.

- 1 During play, press **AUDIO** repeatedly to select an audio channel available on the disc:
 - Mono Left
 - Mono Right
 - Mix-Mono
 - Stereo

Select a camera angle

Note

- This feature is only available for DVDs recorded with multiple camera angles.

- 1 During play, press **ANGLE** repeatedly to select a camera angle.

Select an audio language

Note

- This feature is only available for DVDs/DivX videos recorded with multiple audio languages.

- 1 Press **AUDIO** repeatedly to select an audio language.

6 Adjust sound

Adjust volume

- 1 During play, press **VOL +/-** to increase/decrease the volume.

Boost sound power

MAX SOUND gives an instant boost to the sound power.

- 1 Press **MAX** to turn on or off the sound power boost.
↳ If MAX sound is activated, MAX is displayed.

Mute sound

- 1 During play, press **MUTE** to mute/unmute sound.

Select a preset sound effect

- 1 During play, press **DSC** repeatedly to select:
 - **[ROCK]** (rock)
 - **[JAZZ]** (jazz)
 - **[POP]** (pop)
 - **[CLASSIC]** (classic)

Enhance bass

- 1 During play, press **DBB** to turn on or off dynamic bass enhancement.
↳ If DBB is activated, DBB is displayed.

7 Adjust settings

General setup

- 1 Press **SYSTEM MENU**.
↳ **[General Setup]** menu is displayed.
- 2 Press **▶▶**.
- 3 Select an option, then press **OK**.
- 4 Select a setting, then press **OK**.
 - To return to the previous menu, press **◀◀**.
 - To exit the menu, press **SYSTEM MENU**.

Note

- See the explanations of the above options in the following pages.

[Disc Lock]

Set play restriction for specific discs. Before you start, place the disc in the disc compartment (maximum 40 discs can be locked).

- **[Lock]** – Restrict access to the current disc. You need to enter a password to unlock and play the disc.
- **[Unlock]** – Play all discs.

Tip

- To set or change the password, go to **[Preferences]>[Password]**.

[OSD Language]

Select the preferred language for on-screen display.

[Screen Saver]

The screen saver protects the TV screen damage due to prolonged exposure to a static image.

- **[On]** – Enable the screen saver.
- **[Off]** – Disable the screen saver.

[DivX(R) VOD Code]

Display the DivX® registration code.

Tip

- Enter this DivX registration code when you rent or purchase video from <http://vod.divx.com>. The DivX videos rented or purchased through the DivX® VOD (Video On Demand) service can be played only on the device to which it is registered.

Audio setup

- 1 Press **SYSTEM MENU**.
↳ **[General Setup]** menu is displayed.
- 2 Press **▼** to select **[Audio Setup]**, then press **▶▶**.
- 3 Select an option, then press **OK**.
- 4 Select a setting, then press **OK**.
 - To return to the previous menu, press **◀◀**.
 - To exit the menu, press **SYSTEM MENU**.

Note

- See the explanations of the above options in the following pages.

[HDMI Audio]

When you connect this apparatus and TV with an HDMI cable, select the audio output setting for this connection.

- **[Off]** – disable audio output from the TV. The sound is only output through this apparatus.
- **[All]** – the sound is output through both your TV and this apparatus. If the audio format on the disc is not supported, it is downmixed to two-channel sound (Linear-PCM).

[CD Upsampling]

Convert the music CD to a higher sampling rate using sophisticated digital signal processing for better sound quality.

- **[Off]** – Turn off CD-upsampling.
- **[88.2kHz (X2)]** – Convert the sampling rate of the CDs twice as high as the original rate.

Note

- CD upsampling is only available in stereo mode.

[Audio Sync]

When you play a video disc, set the default delay time for audio output.

- 1) To start, press **OK**.
- 2) Select a speaker delay in the menu, then press **◀▶** to set the delay time.
- 3) Press **OK** to confirm and exit.

Video setup

- 1 Press **SYSTEM MENU**.
↳ **[General Setup]** menu is displayed.
- 2 Press **▼** to select **[Video Setup]**, then press **▶▶**.
- 3 Select an option, then press **OK**
- 4 Select a setting, then press **OK**.
 - To return to the previous menu, press **◀◀**.
 - To exit the menu, press **SYSTEM MENU**.

Note

- See the explanations of the above options in the following pages.

[TV Type]

Change this setting if the video does not appear correctly. By default, this setting matches the most common setting for TVs in your country.

- **[PAL]** – For TV with PAL color system.
- **[NTSC]** – For TV with NTSC color system.
- **[Multi]** – For TV that is compatible with both PAL and NTSC.

[TV Display]

The TV format determines the aspect ratio of display according to the type of TV you have connected.



4:3 Pan Scan (PS)

4:3 Letter Box (LB)

16:9 (Wide Screen)

- **[4:3 Pan Scan]** – For 4:3 screen TV: full-height display with the trimmed sides.
- **[4:3 Letter Box]** – For 4:3 screen TV: wide-screen display with black bars on the top and bottom of the screen.
- **[16:9 Wide Screen]** – For wide-screen TV: display ratio 16:9.

[Progressive]

If the TV supports progressive scan output, you can turn on the progressive scan mode to enhance the picture quality. Video connection through Component Video is required.

- **[Off]** – Disable progressive scan mode.
- **[On]** – Turn on progressive scan mode.

Tip

- There is more detailed description available (see 'Get started' > 'Turn on Progressive Scan').

[Picture Settings]

Select a predefined set of picture color settings or customize your personal setting.

- **[Standard]** – original color setting.
- **[Bright]** – vibrant color setting.
- **[Soft]** – warm color setting.
- **[Personal]** – customize the color setting. Adjust the level of brightness, contrast, sharpness/tint and color saturation.

[HDMI Setup]

When you connect this apparatus and TV with HDMI cable, select the best HDMI video setting that your TV supports.

- **[Wide Screen Format]** – Define the wide screen format for disc play.

Option	Description
[Superwide]	Center position of the screen is stretched less than the side. Applicable only to 720p and above video resolution setting.

Option	Description
[4:3 Pillar Box]	No stretching of the picture. Black bars are displayed on both sides of the screen.
[Off]	Picture is displayed according to the format of the disc.

Note

- This setting is only available if you have set the [TV Display] setting to [16:9 Wide Screen].

- [HDMI Video] – Select the HDMI video output resolution that is compatible with your TV display capability.

Option	Description
[Auto]	Detect and select the best supported video resolution automatically.
[480p], [576p], [720p], [1080i], [1080p]	Select a video resolution that is best supported by the TV. See the TV manual for details.

Note

- If the setting is not compatible with your TV, a blank screen appears. Wait for 15 seconds for auto recover or switch to its default mode as follows: 1) Press ▲. 2) Press ◀◀. 3) Press ZOOM.

[Component]

Select the video output format that matches the video connection between this unit and the TV.

- [YUV] – Component video connection.
- [RGB] – Scart connection.

[Closed Caption]

Turn off or on display captions.

- [On] – show the sound effects in subtitles. Applicable only to discs with Closed Caption information included and the TV that supports this feature.
- [Off] – turn off closed caption.

Preferences

- 1 Press **SYSTEM MENU**.
↳ [General Setup] menu is displayed.
- 2 Press ▼ to select [Preferences], then press ▶▶

- 3 Select an option, then press **OK**.
- 4 Select a setting, then press **OK**.
 - To return to the previous menu, press ◀◀.
 - To exit the menu, press **SYSTEM MENU**.

Note

- See the explanations of the above options in the following pages.

[Audio]

Select the preferred audio language for disc play.

[Subtitle]

Select the preferred subtitle language for disc play.

[Disc Menu]

Select the preferred disc menu language.

Note

- If the language you have set is not available on the disc, the disc uses its own default language.
- For some discs, the subtitle/audio language can only be changed from the disc menu.
- To select the languages that are not listed in the menu, select [Others]. Then check the Language Code list at the back of this user manual and enter the respective 4-digit language code.

[Parental]

Restrict access to discs that are unsuitable for children. These types of discs must be recorded with ratings.

- 1) Press **OK**.
- 2) Select a rating level, then press **OK**.
- 3) Press the numeric keys to enter the password.

Note

- Rated discs above the level you set in [Parental] require a password to be played.
- The ratings are country-dependent. To allow all discs to play, select '8'.
- Some discs have ratings printed on them but are not recorded with ratings. This function has no effect on such discs.

Tip

- You can set or change the password (see 'Preferences' > [Password]).

[MP3/JPEG Nav]

Select to display the folders or display all the files.

- **[Without Menu]** – display all the files.
- **[With Menu]** – display the folders of MP3/WMA files.

[Password]

Set or change the password for locked discs and play restricted DVDs.

- 1) Press the numeric keys to enter '000000' or your last set password at **[Old Password]** field.
- 2) Enter the new password at **[New Password]** field.
- 3) Enter the new password again at **[Confirm PWD]** field.
- 4) Press **OK** to exit the menu.

**Note**

- If you forget the password, enter '136900' before you set a new password.

[DivX Subtitle]

Select a character set that supports the DivX subtitle.

[Standard]	English, Irish, Danish, Estonian, Finnish, French, German, Italian, Portuguese, Luxembourgish, Norwegian (Bokmål and Nynorsk), Spanish, Swedish, Turkish
[Central Europe]	Polish, Czech, Slovak, Albanian, Hungarian, Slovene, Croatian, Serbian (Latin script), Romanian
[Cyrillic]	Belarusian, Bulgarian, Ukrainian, Macedonian, Russian, Serbian
[Greek]	Greek
[Hebrew]	Hebrew
[Chinese(Simp)]	Simplified Chinese
[Korean]	Korean

**Note**

- Ensure that the subtitle file has the exact same file name as the movie file. If for example the file name of the movie is 'Movie.avi', then you will need to name the text file 'Movie.sub' or 'Movie.srt'.

[Default]

Reset all the settings of this apparatus to factory default, except for **[Disc Lock]**, **[Password]** and **[Parental]** settings.

[Version Info]

Display the software version of this apparatus.

**Tip**

- This information is required when you want to find out if a newest software version is available at the Philips website that you may download and install on this apparatus.

8 Listen to the radio

**Tip**

- For optimal reception, fully extend and adjust the position of the FM antenna.
- Position the antenna as far away as possible from your TV, VCR or other radiation source to prevent interference.

First time tuning

When you access to radio mode for the first time, follow the instructions to install the radio stations.

- 1 Press **TUNER**.
↳ 'AUTO INSTALL ... PRESS PLAY' is displayed.
- 2 Press **▶||**.
↳ All detected radio stations are stored.
↳ Once complete, it tunes to the first preset radio station.
 - To stop auto tuning, press **■**.

**Note**

- This unit can store up to a maximum of 40 radio stations.
- If auto installation is not activated or less than 5 radio stations are stored, you will be prompted to check the FM antenna.

Tune to a radio station

- 1 Press **TUNER** to select the tuner source.
- 2 Press and hold **◀◀▶▶** for more than 2 seconds.
↳ The radio tunes to a station with strong reception automatically.

- Repeat step 2 to tune to more stations.
 - To tune to a weak station, press ◀◀ /▶▶ repeatedly until you find optimal reception.



Note

- If the FM radio station transmits RDS (Radio Data System) data, the name of the radio station is displayed.

Reinstall radio stations

- Press **TUNER**.
- Press and hold **PROG** for more than 2 seconds.
 - All previously stored radio stations are replaced.

Program radio stations manually

You can program a maximum of 40 preset radio stations.

- Tune to a radio station.
- Press **PROG** to activate program mode.
- Press ◀/▶ to allocate a number to this radio station, then press **PROG** to confirm.
 - The preset number and the frequency of the preset station are displayed.
- Repeat the above steps to program other stations.



Tip

- To overwrite a programmed station, store another station in its place.

Select a preset radio station

- In tuner mode, press ◀/▶ to select a preset number.

Delete a preset radio station

- In tuner mode, press ◀/▶ to select a preset number.
- Press and hold ■ until "FM X (preset number) **DELETE**" appears.
 - The selected preset radio station continues to play but is deleted from the list.

9 Other features

Set the alarm timer

This unit can be used as an alarm clock. The DISC, TUNER or AUX is activated to play at a preset time.

- Ensure that you have set the clock correctly.
- In standby mode, press and hold **TIMER**.
 - The time digits are displayed and begin to blink.
- Press **DISC**, **TUNER** or **AUX/MP3-LINK** to select a source.
- Press ◀/▶ to set the hour.
- Press ◀◀/▶▶ to set the minute.
- Press **TIMER** to confirm.
 - The timer is set and activated.

Activate and deactivate the alarm timer

- In standby mode, press **TIMER**.
- Press ■ repeatedly to activate or deactivate the timer.
 - If the timer is activated, the display shows ⌚.
 - If the timer is deactivated, ⌚ disappears on the display.



Note

- If disc source is selected and the track cannot be played, tuner is activated automatically.

Set the sleep timer

This unit can switch to standby automatically after a set period of time.

- When the unit is turned on, press **SLEEP** repeatedly to select a set period of time (in minutes).
 - When sleep timer is activated, the display shows z².

To deactivate sleep timer

- Press **SLEEP** repeatedly until [OFF] (off) is displayed.
 - When sleep timer is deactivated, z² disappears on the display.

Karaoke

- Turn on the TV to the correct viewing channel for this unit.

- 2 Press **KARAOKE**.
↳ The Karaoke setup menu is displayed.
- 3 Select an option and change the setting, then press **OK**.
- 4 To exit the menu, press **KARAOKE**.

[Mic]

Turn on or off microphone output.

- **[On]** – Turn on microphone.
- **[Off]** – Turn off microphone.

[Mic Volume]

- Press **▲▼** to adjust the microphone volume.

[Echo Level]

Press **▲▼** to set the echo level.

[Key]

Press **▲▼** to set the pitch level that matches your voice.

[Score]

Select a karaoke rating score level.

- **[Off]** – No score rating display.
- **[Basic]** – Basic rating.
- **[Intermediate]** – Intermediate rating.
- **[Advance]** – Advance rating.

Enjoy karaoke

- 1 Connect a microphone (not supplied) to **MIC** jack on this unit.
- 2 Press **DISC** to select the disc source.
- 3 Load a karaoke disc.
↳ The disc menu is displayed.
- 4 Select an option, and then press **OK** to start play.
- 5 Press **VOCAL** to change the audio channel or turn off the vocal.
- 6 Sing through the microphone.
 - To adjust the volume of the source, press **VOL +/-**.
 - For more karaoke settings, refer to Karaoke settings.

Play from an external device

You can also listen to an external audio device through this unit.

For an audio device with a headphone socket:

- 1 Press **AUX/MP3 LINK** to select the MP3 link source.
- 2 Connect the MP3 link cable to
 - the **MP3 LINK** socket on this unit.
 - the headphone socket on an MP3 player.

- 3 Start to play the MP3 player. (See the user manual of the MP3 player)

For other audio devices:

- 1 Press **AUX/MP3 LINK** to select the AUX source.
- 2 Connect the audio cables to
 - the **AUX IN** sockets on this unit.
 - the audio out sockets on the audio device.
- 3 Start to play the device. (See the device user manual)

Create MP3 files

Create MP3 files

Convert your favourite audio tracks from an audio CD into MP3 format. The created MP3 files are saved in your USB flash drive.

You can convert audio CDs (CDDA/HDCD) into MP3 audio files with this unit. The created MP3 audio files are saved in the USB device.

- 1 Insert an audio CD.
- 2 Insert the USB plug of a USB device into the USB socket.
- 3 During disc play, press **USB REC** ●.
- 4 Select the conversion options in the **[OPTIONS]** panel and press **OK**.

Option	Description
[Speed]	Select the conversion speed. [Normal] : Convert and play music files at the same time. [Fast] : Convert music files only.
[Bitrate]	Select the bitrate. Higher bitrate for better sound quality and bigger file size. [96 kbps] , [112 kbps] , [128 kbps] , [192 kbps] , [256 kbps] , [320 kbps]
[Text to ID3]	Copy track information into the MP3 file. [Yes] : Add the ID3 information. [No] : No ID3 information is added.
[Device]	The created MP3 files can only be saved in USB device.

- 5 Press **▶▶** to access the **[Track]** panel.
- 6 Select a track, then press **OK**.
 - To select another track, repeat step 6.
 - To select all tracks, select **[Sel_all]**, then press **OK**.
 - To deselect all tracks, select **[Sel_none]**, then press **OK**.

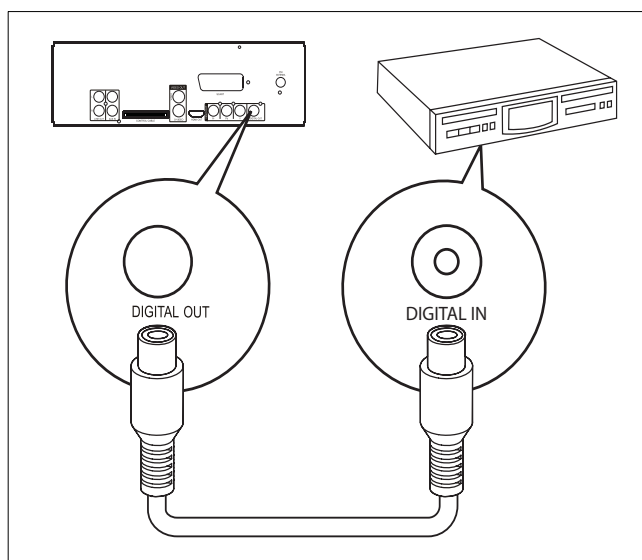
- 7 Select **[Start]** to start to convert, then press **OK**.
 - ↳ Once complete, a new folder is created automatically in the USB device to store all the new MP3 files.
 - To exit the menu, select **[Exit]** and then press **OK**.

Note

- While you convert, never press any buttons.
- DTS CDs and copy-protected CDs cannot be converted.
- Write-protected or password-protected USB devices cannot be used to store MP3 files.


Record to a digital recorder

- 1 Connect a digital cable (not supplied) to:
 - the **DIGITAL OUT** socket on this unit.
 - the digital input socket on the digital recorder.



- 2 Play the audio to be recorded.
- 3 Start to record on the digital recorder (see the user manual of the digital recorder).

Listen through headphone

- 1 Plug a headphone into the  socket on the unit.

10 Product information

Note

- Product information is subject to change without prior notice.

Specifications

Amplifier

Rated Output Power	400W
Frequency Response	40 - 20000 Hz, ± 3 dB
Signal to Noise Ratio	>60dB
Aux Input	1.0 V RMS 47kohm
MP3 Link	1.0 V RMS 47kohm

Disc

Laser Type	Semiconductor
Disc Diameter	12cm/8cm
Video Decoding	MPEG-1 / MPEG-2 / DivX / DivX Ultra
Video DAC	12 bits, 108 MHz
Signal System	PAL / NTSC
Video Format	4:3 / 16:9
Video S/N	56 dB
Audio DAC	24 bits / 96 kHz
Frequency Response	4 Hz - 20 kHz (44.1 kHz) 4 Hz - 22 kHz (48 kHz) 4 Hz - 44 kHz (96 kHz)
PCM	IEC 60958
Dolby Digital	IEC 60958, IEC 61937
DTS	IEC 60958, IEC 61937

Tuner (FM)

Tuning Range	87.5 - 108 MHz
Tuning grid	50 kHz
26 dB quieting sensitivity	FM 22 dBf
Search Selectivity	<37 dBf
Total Harmonic Distortion	<3%
IF rejection ratio	60 dB
Signal to Noise Ratio	>55 dB
Frequency response	180 Hz~10 kHz / ± 6 dB
Stereo separation	26 dB (1 kHz)
Stereo Threshold	29 dB

Speakers

Speaker Impedance	4 ohm
Speaker Driver	2 x 5.25" woofer + 1.25" tweeter
Sensitivity	>82 dB/m/W

General information

AC power	110-127V/220-240V~, 50/60Hz
Operation Power Consumption	80W
Standby Power Consumption	≤ 10 W
Eco Standby Power Consumption	≤ 1 W
Audio Output	0 dB 2 ± 0.2 V Rms 47 kohm
Headphone output	2X25 mW 32ohm
Dimensions	
- Main Unit (W x H x D)	270 x 190 x 324 mm
- Speaker Box (W x H x D)	189 x 406 x 304 mm
Weight	
- With Packing	23.5 kg
- Main Unit	5.9 kg
- Speaker Box	2 x 7 kg

Supported disc formats

- Digital Video Discs (DVDs)
- Video CDs (VCDs)
- Super Video CDs (SVCDs)
- Digital Video Discs + Rewritable (DVD+RW)
- Compact Discs (CDs)
- Picture (Kodak, JPEG) files on CDR(W)
- DivX(R) disc on CD-R(W)
- DivX 3.11, 4.x, 5.x and DivX Ultra
- WMA

Supported MP3-CD formats:

- ISO 9660
- Max. title/album name: 12 characters
- Max. title number plus album: 648.
- Max. album number: 300.
- Max. MP3 track number: 648.
- Supported sampling frequencies for MP3 disc: 32 kHz, 44.1 kHz, 48 kHz.
- Supported Bit-rates of MP3 disc are: 32, 64, 96, 128, 192, 256 (kbps).

These formats are not supported:

- Files like *.VMA, *.AAC, *.DLF, *.M3U, *.PLS, *.WAV
- Non-English Album/Title name
- Discs recorded in Joliet format
- MP3 Pro

USB playability information

Compatible USB devices:

- USB flash memory
- USB flash players
- memory cards (requires an additional card reader to work with this apparatus)

Supported formats:

- USB or memory file format FAT12, FAT16, FAT32 (sector size: 512 bytes)
- MP3 bit rate (data rate): 32-320 Kbps and variable bit rate
- WMA v10 or earlier
- Number of albums/ folders: maximum 300
- Number of tracks/titles: maximum 648

Unsupported formats:

- Unsupported file formats are skipped. For example, Word documents (.doc) or MP3 files with extension .dlf are ignored and not played.
- AAC, WAV, PCM audio files
- DRM protected WMA files (.wav, .m4a, .m4p, .mp4, .aac)
- WMA pro, WMA voice, WMA files in Lossless format

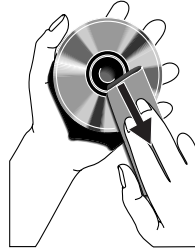
Maintenance

Clean the cabinet

- Use a soft cloth slightly moistened with a mild detergent solution. Do not use a solution containing alcohol, spirits, ammonia or abrasives.

Clean discs

- When a disc becomes dirty, clean it with a cleaning cloth. Wipe the disc from the centre out.
- Do not use solvents such as benzene, thinner, commercially available cleaners, or antistatic spray intended for analogue records.



Clean the disc lens

- After prolonged use, dirt or dust may accumulate at the disc lens. To ensure good play quality, clean the disc lens with Philips CD lens cleaner or any commercially available cleaner. Follow the instructions supplied with cleaner.

11 Troubleshooting



Warning

- Never remove the casing of this apparatus.

To keep the warranty valid, never try to repair the system yourself.

If you encounter problems when using this apparatus, check the following points before requesting service. If the problem remains unsolved, go to the Philips web site (www.philips.com/welcome). When you contact Philips, ensure that the apparatus is nearby and the model number and serial number are available.

No power

- Ensure that the AC power plug of the unit is connected properly.
- Ensure that there is power at the AC outlet.
- As a power-saving feature, the unit switches off automatically 15 minutes after track play reaches the end and no control is operated.

No sound or poor sound

- Adjust the volume.
- Disconnect the headphones.
- Check that the speakers are connected correctly.

- Check if the stripped speaker wires are clamped.

Left and right sound outputs reversed

- Check the speaker connections and location.

No response from the apparatus

- Disconnect and reconnect the AC power plug, then turn on the system again.
- As a power-saving feature, the system switches off automatically 15 minutes after track play reaches the end and no control is operated.

Remote control does not work

- Before you press any function button, first select the correct source with the remote control instead of the main unit.
- Reduce the distance between the remote control and the unit.
- Insert the battery with its polarities (+/- signs) aligned as indicated.
- Replace the battery.
- Aim the remote control directly at the sensor on the front of the unit.

No disc detected

- Insert a disc.
- Check if the disc is inserted upside down.
- Wait until the moisture condensation at the lens has cleared.
- Replace or clean the disc.
- Use a finalized CD or correct format disc.

No picture

- Check the video connection.
- Turn on the TV to the correct Video-In channel.
- Progressive scan is activated but the TV does not support progressive scan.

Black and white or distorted picture

- The disc does not match the TV color system standard (PAL/NTSC).
- Sometimes a slight picture distortion may appear. This is not a malfunction.
- Clean the disc.
- A distorted picture may appear during progressive scan setup.

The aspect ratio of the TV screen cannot be changed even though you have set the TV display format.

- The aspect ratio is fixed on the loaded DVD disc.
- The aspect ratio may not be changed for some TV systems.

Audio or subtitle languages cannot be set

- The disc is not recorded with sound or subtitles in multiple languages.
- The audio or subtitle language setting is prohibited on the disc.

Cannot display some files in USB device

- The number of folders or files in the USB device has exceeded a certain limit. This phenomenon is not a malfunction.
- The formats of these files are not supported.

USB device not supported

- The USB device is incompatible with the unit. Try another one.

Poor radio reception

- Increase the distance between the unit and your TV or VCR.
- Fully extend the FM antenna.
- Connect an outdoor FM antenna instead.

Timer does not work

- Set the clock correctly.
- Switch on the timer.

Clock/timer setting erased

- Power has been interrupted or the power cord has been disconnected.
- Reset the clock/timer.

12 Glossary

A

Analog audio

Sound that has not been turned into numbers. Analog sound is available when you use the AUDIO LEFT/RIGHT. These red and white jacks send audio through two channels, the left and right.

Aspect ratio

Aspect ratio refers to the length to height ratio of TV screens. The ratio of a standard TV is 4:3, while the ratio of a high-definition or wide TV is 16:9. The letter box allows you to enjoy a picture with a wider perspective on a standard 4:3 screen.

AUDIO OUT sockets

Red and white sockets that send audio to another system (TV, Stereo, etc).

B

Bit rate

Bit rate is the number of bits that are conveyed or processed per unit of time. The bit rate is usually measured in some multiple of bits per second (kilobits per second: kbps). The term bit rate is a synonym for data transfer rate (or simply data rate).

C

Chapter

Chapter

Sections of a picture or a music piece on a DVD that are smaller than titles. A title is composed of several chapters. Each chapter is assigned a chapter number that enables you to locate a specific chapter.

D

Digital Audio

Digital Audio is a sound signal that has been converted into numerical values. Digital sound can be transmitted through multiple channels. Analog sound can only be transmitted through two channels.

Disc menu

A screen display that allows election of images, sounds, subtitles, multi-angles, etc., recorded on a DVD.

DivX®

The DivX® codec is a patent-pending, MPEG-4 based video compression technology developed by DivX®, Inc. It can shrink the file size of digital video and still maintain the high visual quality.

Dolby Digital

A surround sound system developed by Dolby Laboratories that contains up to six channels of digital audio (front left and right, surround left and right, center and subwoofer.)

J

JPEG

A very common digital still picture format. A still-picture data compression system proposed by the Joint Photographic Expert Group, which features small decrease in image quality in spite of its high compression ratio. Files are recognized by their file extension '.jpg' or '.jpeg.'

M

MP3

A file format with a sound data compression system. MP3 is the abbreviation of Motion Picture Experts Group 1 (or MPEG-1) Audio Layer 3. With the MP3 format, one CD-R or CD-RW can contain about 10 times more data than a regular CD.

Multichannel

Usually DVD is specified to have each sound track constitute one sound field. Multichannel refers to a structure of sound tracks having three or more channels.

P

Parental control

A function of the DVD to limit playback of the disc by the age of the users according to the limitation level in each country. The limitation varies from disc to disc; when it is activated, playback will be prohibited if the software's level is higher than the user-set level.

PBC

Playback Control. A system where you navigate through a Video CD/Super VCD with on-screen menus that are recorded onto the disc. You can enjoy interactive playback and search.

PCM

Pulse Code Modulation. A digital audio encoding system.

R

Region code

A system that allows discs to be played only in the region designated. This unit only plays discs that have compatible region codes. You can find the region code of your unit on the product label. Some discs are compatible with more than one region (or ALL regions.)

S

S-Video

An analog video connection. It is capable of transmitting clear picture quality by sending separate signals for luminance and colour to the connected device. You can use S-Video only if your TV has an S-Video In socket.

Surround

A system that creates realistic, three-dimensional sound fields. It is usually achieved with multiple speakers that are arranged around the listener.

T

Title

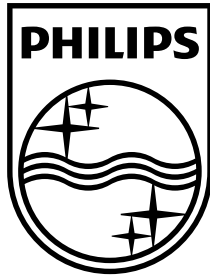
On commercial DVDs, this is the longest section of a movie or music feature on DVD. Each title is assigned a title number, so that you can locate the title you want.

When you record programs, they are stored as titles. Depending on the recording settings, recorded titles may automatically contain several chapters.

V

VIDEO OUT socket

Yellow socket that sends the DVD picture video to a TV.



© 2009 Koninklijke Philips Electronics N.V.

All rights reserved.

Printed in China

MCD802_12_UM_V2.0

