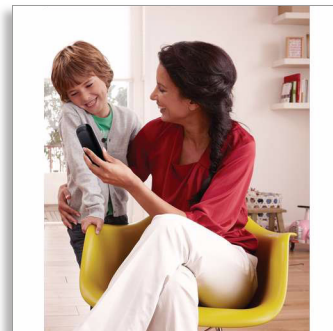




Philips BeNear  
Cordless phone

- 1000-series
- Black



CD1912B

## Bringing people closer

### Talk hands-free

Our clever design gives you great sound reproduction without having to hold the phone to your ear – so you can talk completely hands-free. With simple installation and a user-friendly menu, a great chat has never been easier.

#### Crystal clear sound

- Handset speakerphone allows you to talk hands-free
- The Parametric Equaliser delivers pure and clear sound
- Acoustic echo cancellation keeps your conversation echo-free
- Optimised antenna layout for great reception in any room
- Advanced sound testing and tuning for superb voice quality

#### Nice and simple

- Ultimate convenience through easy setup
- Easy to read, 4.1 cm (1.6") dot-matrix display
- Save up to 50 of your favourite contacts in your phonebook
- Up to 16 hours of talk time

#### Eco-conscious product

- Up to 95% reduction of emitted radiation in charging mode
- Low power consumption: < 0.6 W in stand-by mode

# PHILIPS

# Highlights

## Advanced sound testing



We test the sound quality of our DECT phones the same way as high-end headphone manufacturers do. Using an advanced ear simulator, we can accurately re-create the way people actually hear. This helps our acoustic engineers to measure and fine-tune things like frequency response, distortion and overall hearing perception, to create perfect voice reproduction for both handset and hands-free modes.

## Parametric Equaliser



Our telephones use parametric equalisation in the digital sound processing to fine tune the sound response back to the intended linear frequency response curve, delivering sound that is pure and clear, for each conversation.

## Acoustic echo cancellation

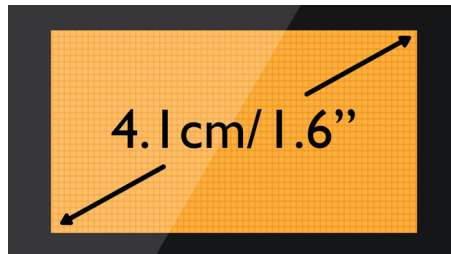
No more of those annoying echoes when you are talking on the phone. With our acoustic echo cancellation, you always get a clear, undisturbed connection.

## Handset speakerphone



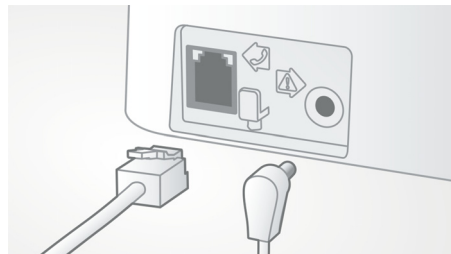
Hands-free mode uses a built-in loudspeaker to amplify the voice of the caller, allowing you to speak and listen during a call without holding the phone to your ear. This is especially useful if you want to share the call with others or simply multitask.

## 4.1 cm (1.6") dot-matrix display



Easy to read, 4.1 cm (1.6") dot-matrix display

## Easy setup



Ultimate convenience through easy set up.  
Simplified installation - Plug and Play product

## 50-name phone book



Always have the phone numbers of your loved ones available: Save up to 50 names in your phonebook.

## Optimised antenna layout



Our optimised antenna layout ensures strong and stable reception, even in areas of the house where cordless transmission is difficult. Now you can take a call wherever you are in the house, and enjoy a long, uninterrupted conversation even as you walk around.

## Low power consumption: < 0.6 W



Philips phones are energy efficient and are designed to be respectful to the environment. The power consumed in stand-by mode is now less than < 0.6 W.

# Specifications

## Sound

- Volume control on handset
- Ringtones on handset: 10 polyphonic

## Picture/Display

- Display size: 4.1 cm/1.6"
- Display type: 1-line dot matrix + 2 line icons
- Backlight: Yes
- Backlight colour: Amber

## Convenience

- Speakerphone — talk hands-free
- Menu structure in the handset: List Menu
- Signal strength indicator: 3- bar indicator
- Battery level indicator: 3- bar battery icon
- Date/Time display
- Base Station keys: Paging key
- Battery charge indication
- Programmable hot keys: Key 1 and 2
- Auto hang up
- Key tone on/off
- Call Management: Call Waiting, Caller ID, Microphone mute, Missed Calls, Received Calls
- Multi-base capability: 1
- Multi-handset capability: Up to 4
- Line cord length: 1.8 m
- Power cord length: 1.8 m
- Charge time: 8 hours

- Up to 16 hrs talk time
- Up to 250 hrs standby time
- Range: Open field <300 m; indoor <50 m

## Memory Capacity

- Phonebook: 50 names and numbers
- Redial List Capacity: 10 entries
- Call log entries: 20 entries
- Phonebook store in the base

## Power

- Battery capacity: 650 mAh
- Battery type: AAA NiMH Rechargeable
- Mains power: AC 100-240 V ~50/60 Hz
- Power Consumption: < 0.6 W

## Security

- Transmission encryption: Yes

## Network Features

- Compatible: GAP

## SAR Value

- Philips handsets: <0.1 W/kg

## Eco Design

- EcoMode: automatic



Issue date 2013-07-19

Version: 2.1.4

12 NC: 8670 000 80247  
EAN: 87 12581 61534 5

© 2013 Koninklijke Philips N.V.  
All Rights reserved.

Specifications are subject to change without notice.  
Trademarks are the property of Koninklijke Philips N.V.  
or their respective owners.

[www.philips.com](http://www.philips.com)