

Register your product and get support at
www.philips.com/welcome

SWW1890



Quick Start Guide

- 1** Install
- 2** Enjoy

PHILIPS

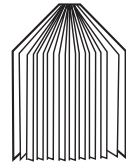
What's in the box



Receiver



Transmitter



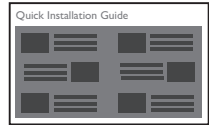
User manual



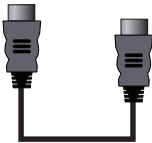
Power adapter x 1



USB cable for the power supply
of the transmitter x 1



Quick Start Guide



HDMI cable



Adhesive tape x 2



Anchors x 2



Screws x 2

Note

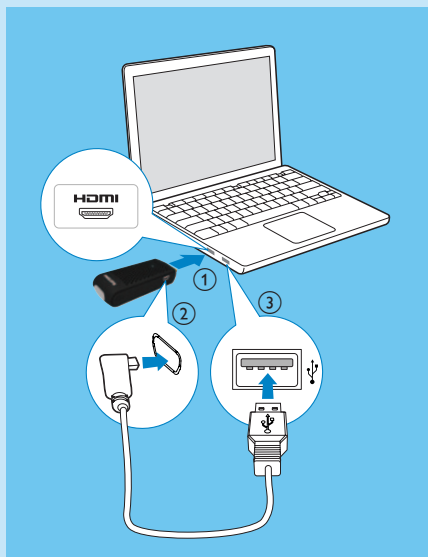
- Make sure you have all these items in the box. Contact your dealer for any missing or damaged items.

1

Install

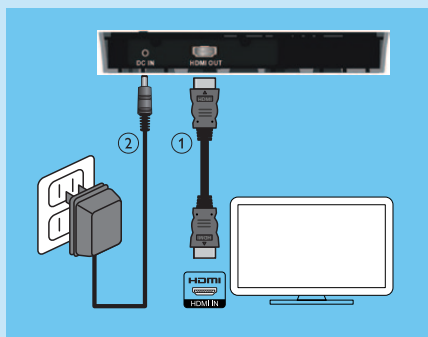
Connect the transmitter to your computer

- 1 Connect the transmitter to the HDMI port of the computer.
 - 2 Connect the small end of the USB cable to the **POWER** jack of the transmitter;
 - 3 Connect the other end of the USB cable to your the USB port of your computer.
- ↳ The power LED indicator of the transmitter flashes in blue, then turns into solid blue when the connection is established.



Connect the receiver to the HDTV set

- 1 Connect the transmitter to the HDMI port of the computer:
 - Connect one end of the HDMI cable to **HDMI OUT** connector of the receiver.
 - Connect the other end of the HDMI cable to the HDMI in connector of your HDTV.
- 2 Connect the supplied power adapter to the receiver:
 - Connect one end of the power adapter to the **DC IN** connector of the receiver.
 - Connect the other end of the power adapter to a power socket.



2

Enjoy

Turn on the power of your HDTV

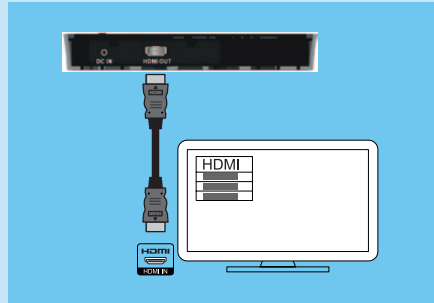
- 1 Go to the source menu under the settings menu of your HDTV.
- 2 Select the HDMI input to which the receiver is connected.

Activate the wireless link

Switch on the transmitter and receiver.

When there is power supply for the transmitter and receiver, they are on automatically.

- The link between the transmitter and receiver is established (within 15-20 seconds).

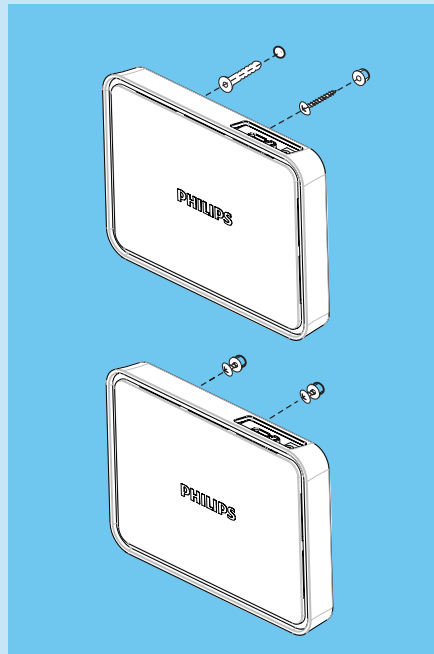


Mount your receiver

You can either mount the receiver on the wall or on the back of the HDTV.

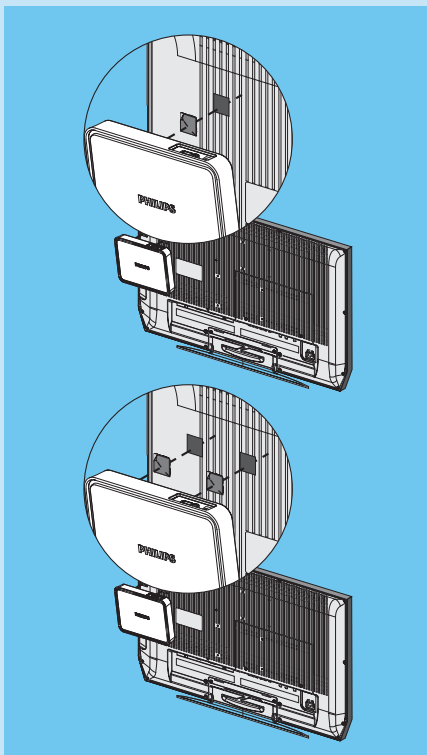
Mount your receiver on the wall

- 1 Select a spot near the HDTV.
- 2 Drill two holes in the wall. Make sure that the distance between the two holes is 45mm and the diameter of the hole is 5 mm.
- 3 Punch the supplied two anchors into the two holes on the wall.
- 4 Put the two screws into the anchors and leave 3 mm to mount the receiver on.
- 5 Hook the key holes at the back of the receiver on the screws.



Mount your receiver on the back of the HDTV

- 1 Remove the white protective film from one of the supplied adhesive tapes.
- 2 Secure the glued side of the adhesive tape and attach it to the central bottom area of the receiver.
- 3 Select a flat location on the rear side of the HDTV.
- 4 Remove the white protective film from the other adhesive tape.
- 5 Secure the glued side of the adhesive tape and attach it to the selected rear side of the HDTV.
- 6 Align the adhesive tape on the receiver with the one on the HDTV until both the receiver and HDTV are mounted together firmly.



Troubleshooting

There is no video displayed on my TV screen.

- Make sure that the appropriate cables are selected and inserted to the transmitter, receiver, and HDTV.
- Make sure that you select HDMI as the input source on your HDTV.
- Check the power LED and status LED on the receiver.

I cannot hear any sound or the sound is poor; what do I do?

- Make sure that the TV volume is adjusted correctly.
- Make sure that the TV volume is not set to minimum or the sound is not muted.
- Make sure that the audio volume of your computer is turned up.
- Make sure that the audio bit rate is supported.
- Make sure that the audio output of your computer is set to HDMI output.

Welcome to Philips

Register your product at www.philips.com/welcome

Need help?

User Manual

Refer to the User Manual that came with your SWW1890.

Online help

www.philips.com/support



© 2011 Koninklijke Philips Electronics N.V.
All rights reserved.
Reproduction in whole or in part is prohibited without the
written consent of the copyright owner.
Trademarks are the property of Koninklijke Philips
Electronics N.V. or their respective owners.



Be responsible
Respect copyrights

CE 0560 

SWW1890_12_EN_QSG_V1.1
WK11254