

Always there to help you

Register your product and get support at
www.philips.com/support



HTL1193B

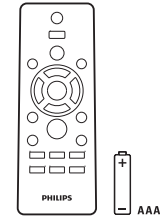
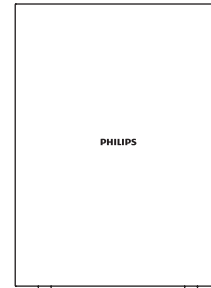


Quick start guide

PHILIPS



- EN** Before using your product, read all accompanying safety information
- DE** Lesen Sie vor Verwendung dieses Produkts alle begleitenden Sicherheitsinformationen
- ES** Antes de usar el producto, lea toda la información de seguridad adjunta
- FR** Avant d'utiliser votre produit, lisez l'intégralité des consignes de sécurité jointes
- PT** Antes de utilizar o produto, leia todas as informações de segurança que o acompanham
- KO** 제품을 사용하기 전에 제공된 모든 안전 정보를 숙지하십시오.
- TH** ก่อนใช้งานผลิตภัณฑ์ของคุณ โปรดอ่านข้อมูลด้านความปลอดภัยที่มีให้โดยละเอียด

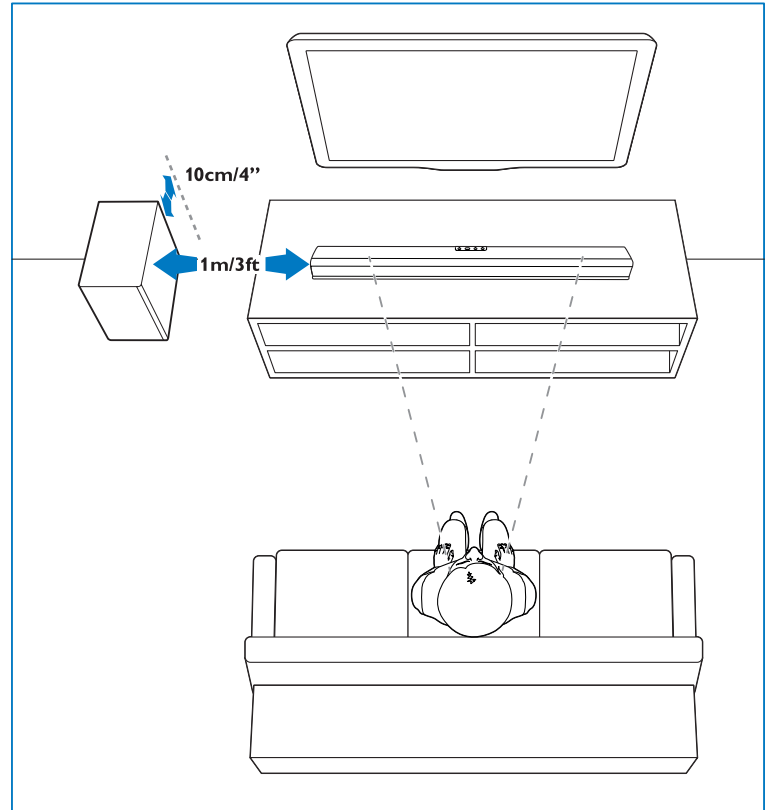


Power Cord



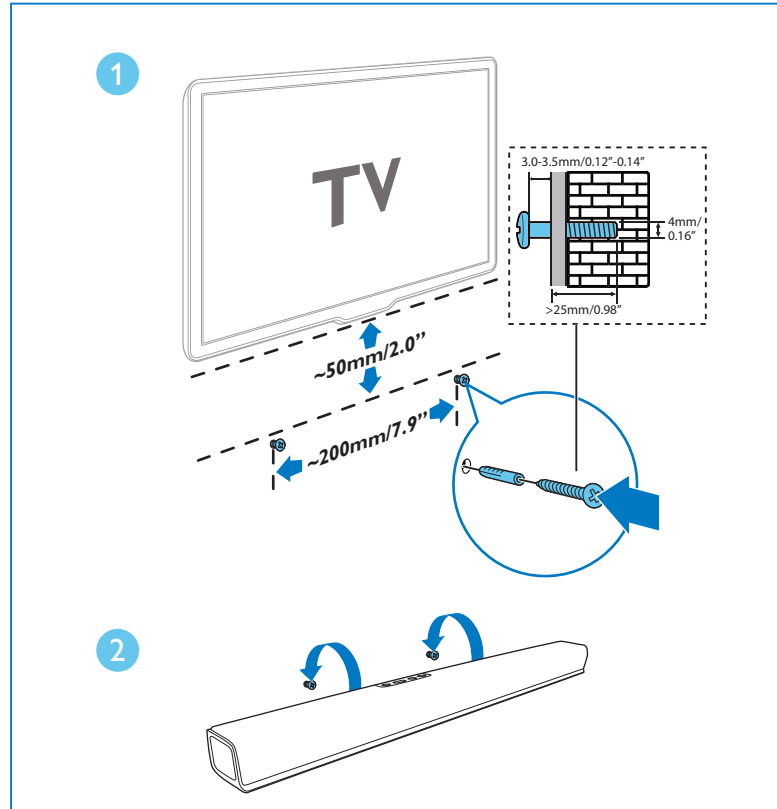
1

- EN** Position your product
- DE** Aufstellen des Produkts
- ES** Colocación del producto
- FR** Positionnez votre produit
- PT** Posicione o seu produto
- KO** 제품 위치 설정
- TH** จัดวางตำแหน่งของผลิตภัณฑ์นี้



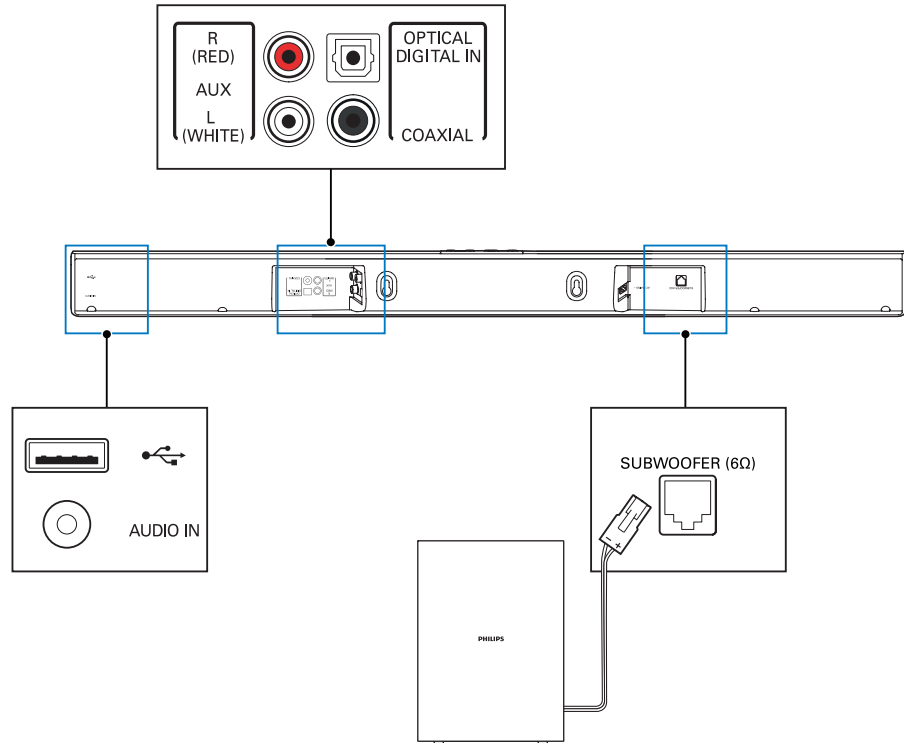


- EN** Wall mount your product (optional)
- DE** Wandmontage Ihres Produkts (optional)
- ES** Instale el producto en la pared (opcional)
- FR** Montage mural de votre produit (facultatif)
- PT** Monte o seu produto numa parede (opcional)
- KO** 벽에 부착 (옵션)
- TH** ยึดผลิตภัณฑ์นี้เข้ากับผนัง (เลือกได้)



2

- EN** Connect your product
- DE** Anschließen des Produkts
- ES** Conexión del producto
- FR** Connectez votre produit
- PT** Ligue o seu produto
- KO** 제품 연결
- TH** เชื่อมต่อผลิตภัณฑ์นี้



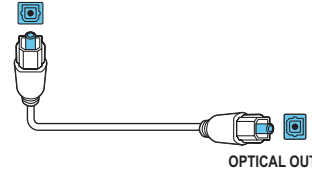
3

- EN** Hear audio from TV in one of the following ways (Mute your TV)
- DE** Genießen Sie den Ton Ihres Fernsehers auf eine der folgenden Arten (Stellen Sie den Ton Ihres Fernsehgeräts stumm)
- ES** Escuche el audio del televisor utilizando uno de los métodos siguientes (Quite el sonido a su TV)
- FR** Vous pouvez lire du contenu audio à partir du téléviseur de plusieurs façons (Désactivation du son du téléviseur)
- PT** Ouvir áudio no televisor de uma das seguintes formas (Tire o som do televisor)
- KO** 다음 중 한 가지 방법으로 TV 오디오 청취 (TV 음소거)
- TH** ฟังเสียงจากทีวีด้วยวิธีใดวิธีหนึ่งต่อไปนี้ (ปิดเสียงทีวีของคุณ)

OPTICAL



OPTICAL
DIGITAL IN

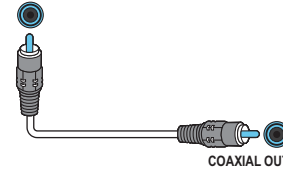


OPTICAL OUT

COAXIAL



COAXIAL

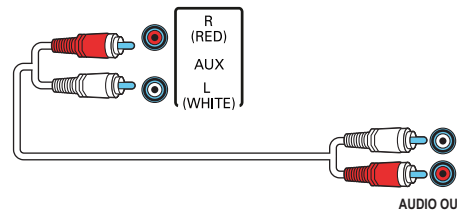


COAXIAL OUT

AUDIO L/R



R
(RED)
AUX
L
(WHITE)



AUDIO OUT

4

EN Enjoy audio from your devices

DE Audio von Ihren Geräten genießen

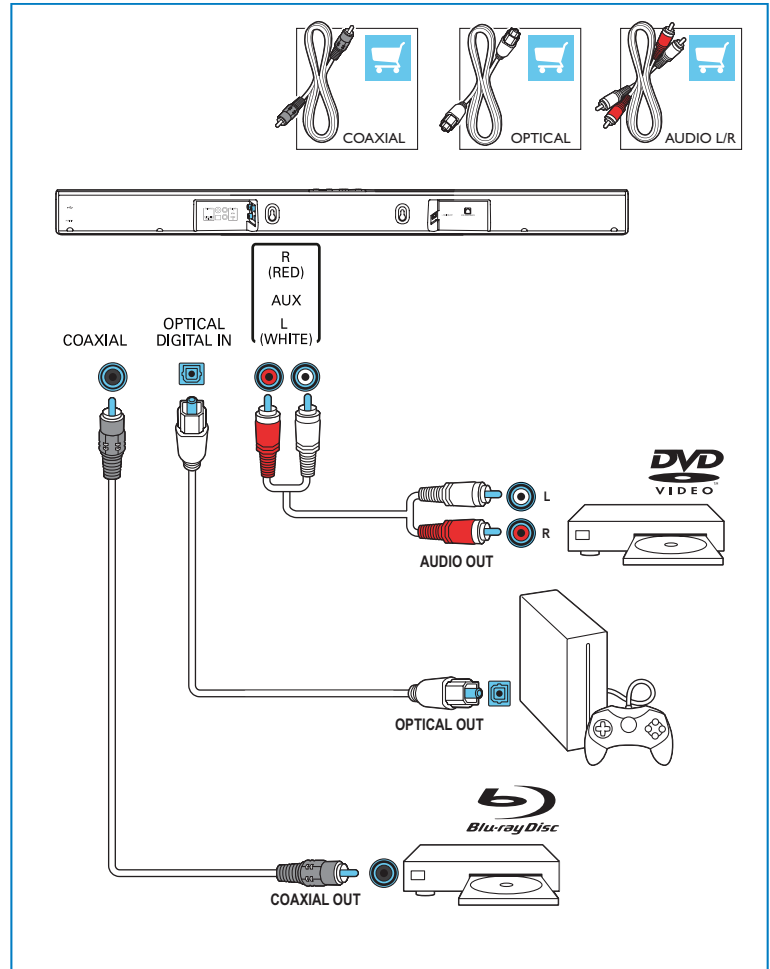
ES Disfrute del audio y de sus dispositivos

FR Lire le contenu audio de vos périphériques

PT Reproduzir áudio nos seus dispositivos

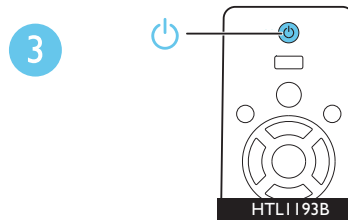
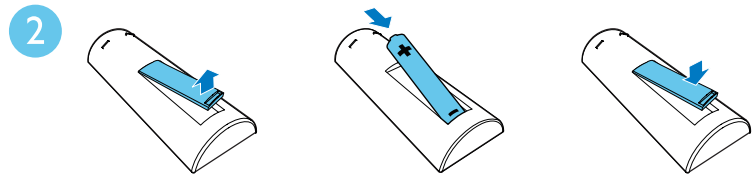
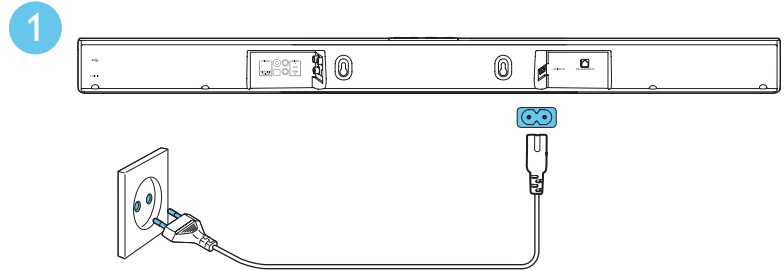
KO 장치를 통한 오디오 청취

TH เพลิดเพลินกับเสียงจากอุปกรณ์ของคุณ



5

- EN** Switch on your product
- DE** Einschalten Ihres Produkts
- ES** Encienda el producto
- FR** Allumez votre produit
- PT** Ligue o seu produto
- KO** 제품 켜기
- TH** เปิดผลิตภัณฑ์นี้



6

EN Select the correct audio source

DE Korrekte Audioquelle wählen

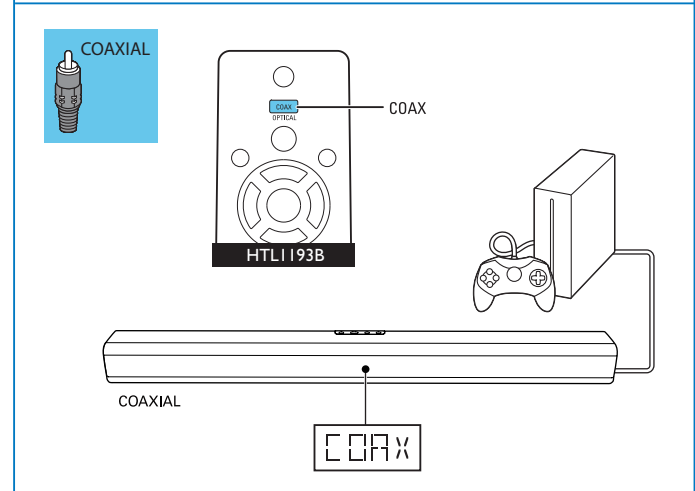
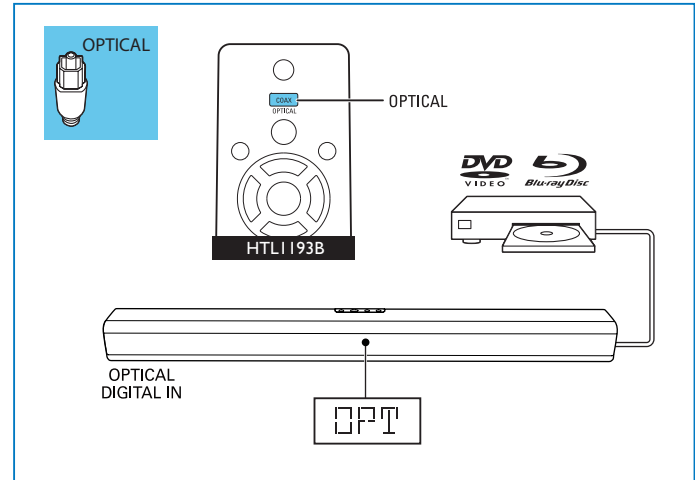
ES Seleccione la fuente de audio correcta

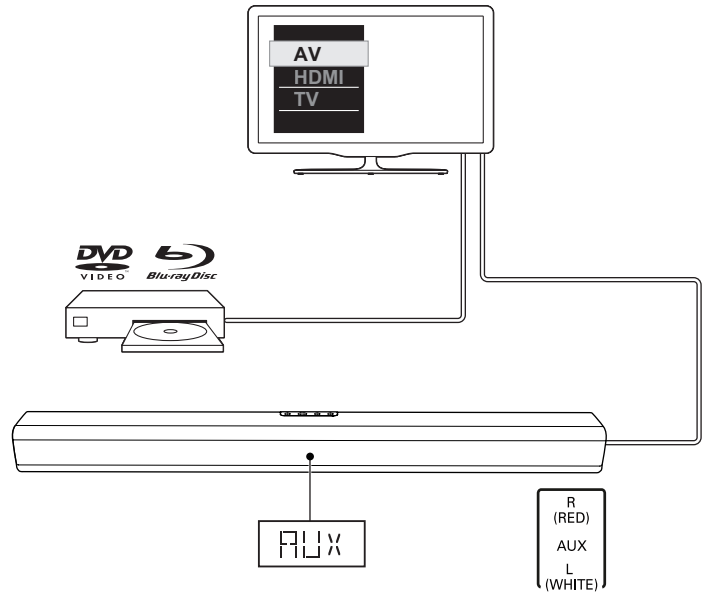
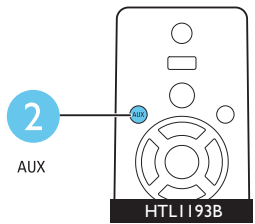
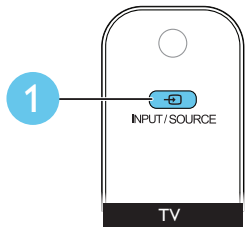
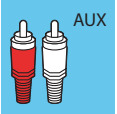
FR Sélectionner la source audio adéquate

PT Selecionar a fonte de áudio correcta

KO 정확한 음원 선택

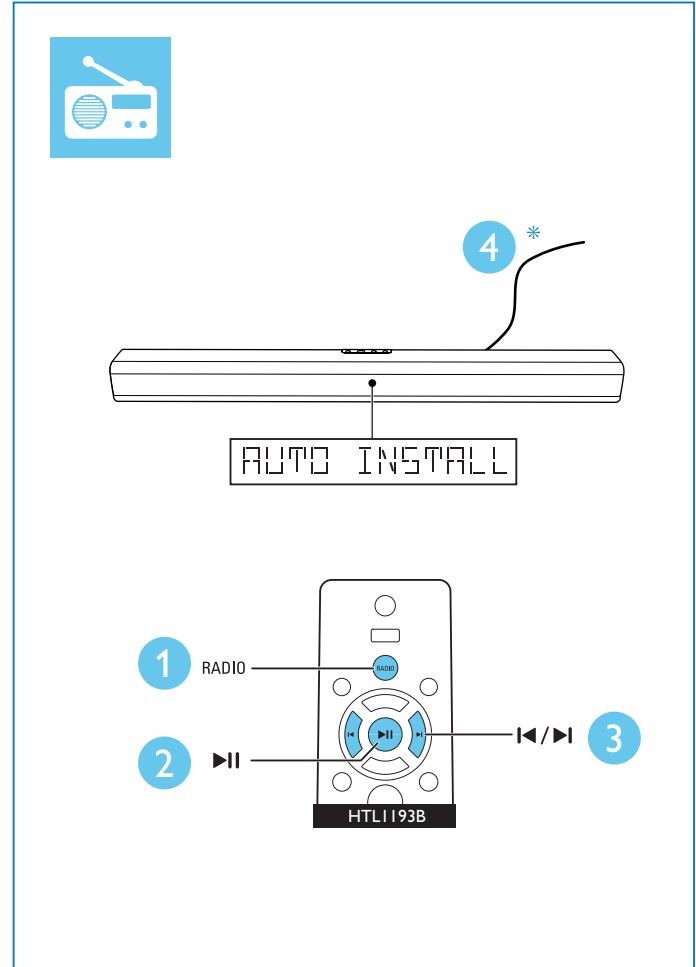
TH เลือกแหล่งเสียงที่ถูกต้อง





7

- EN** Listen to FM radio
For other radio function, refer to the online user manual
* Extend the FM antenna for better reception
- DE** Hören Sie UKW-Radiosender:
Informationen zu anderen Radiofunktionen entnehmen Sie der Online-Bedienungsanleitung.
* Ziehen Sie die UKW-Antenne für einen besseren Empfang heraus.
- ES** Escuche la radio FM.
Para obtener más información acerca de otra función de la radio, consulte el manual de usuario en línea.
* Extienda la antena FM para obtener una mejor recepción.
- FR** Écouter la radio FM.
Pour d'autres fonctions radio, reportez-vous au manuel d'utilisation en ligne.
* Déployez l'antenne FM pour améliorer la réception.
- PT** Ouvir rádio FM.
Consulte o manual do utilizador online para obter informações sobre outras funções do rádio.
* Estique a antena FM para uma melhor recepção.
- KO** FM 라디오 청취
다른 라디오 기능에 대해서는 온라인 사용자 설명서 참조
* 수신율을 높이기 위해 FM 안테나를 연장하십시오.
- TH** ฟังวิทยุ FM
โปรดดูที่คู่มือผู้ใช้ออนไลน์สำหรับฟังก์ชันวิทยุอื่นๆ
* ดึงสายอากาศ FM ออกเพื่อให้รับสัญญาณ ได้ดียิ่งขึ้น



8

EN Play other devices

DE Andere Geräte abspielen

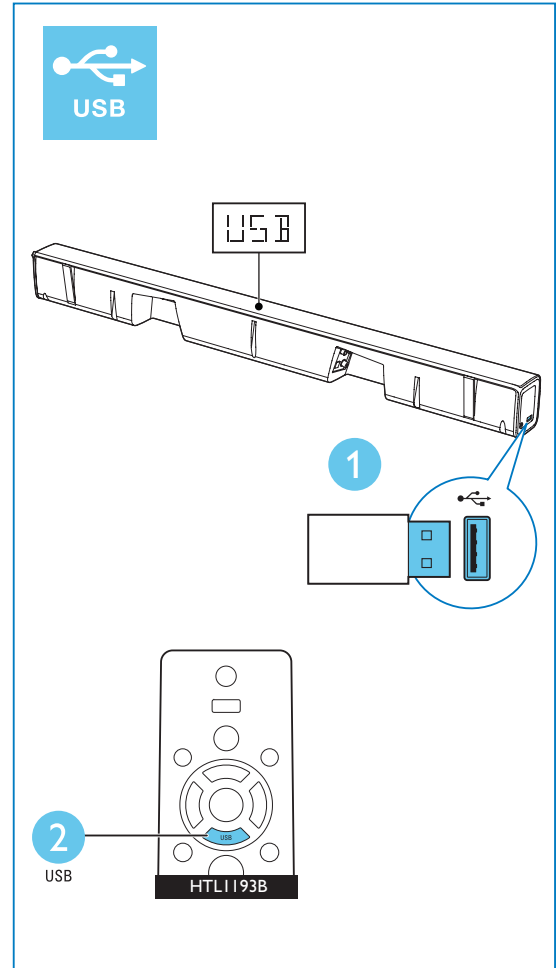
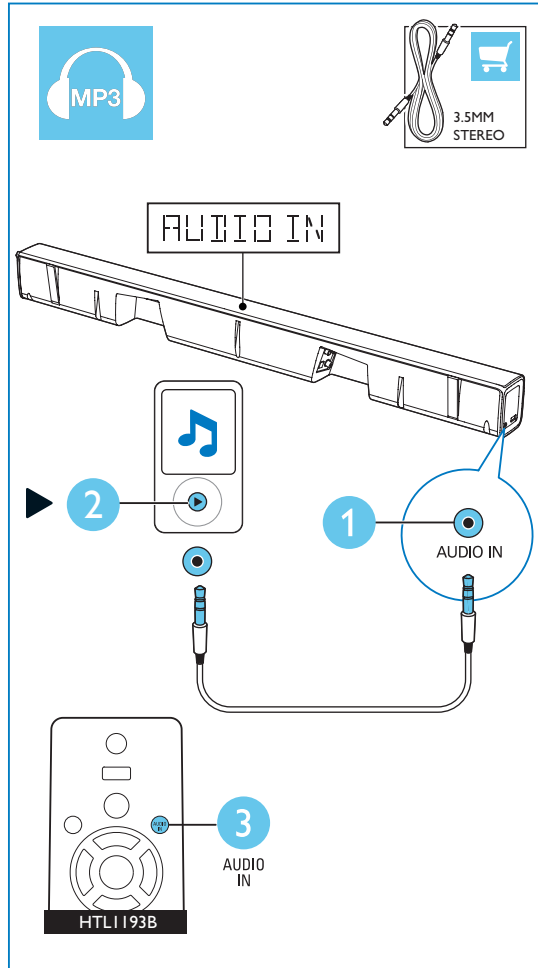
ES Reproduzca otros dispositivos

FR Lire d'autres périphériques

PT Reproduzir noutros dispositivos

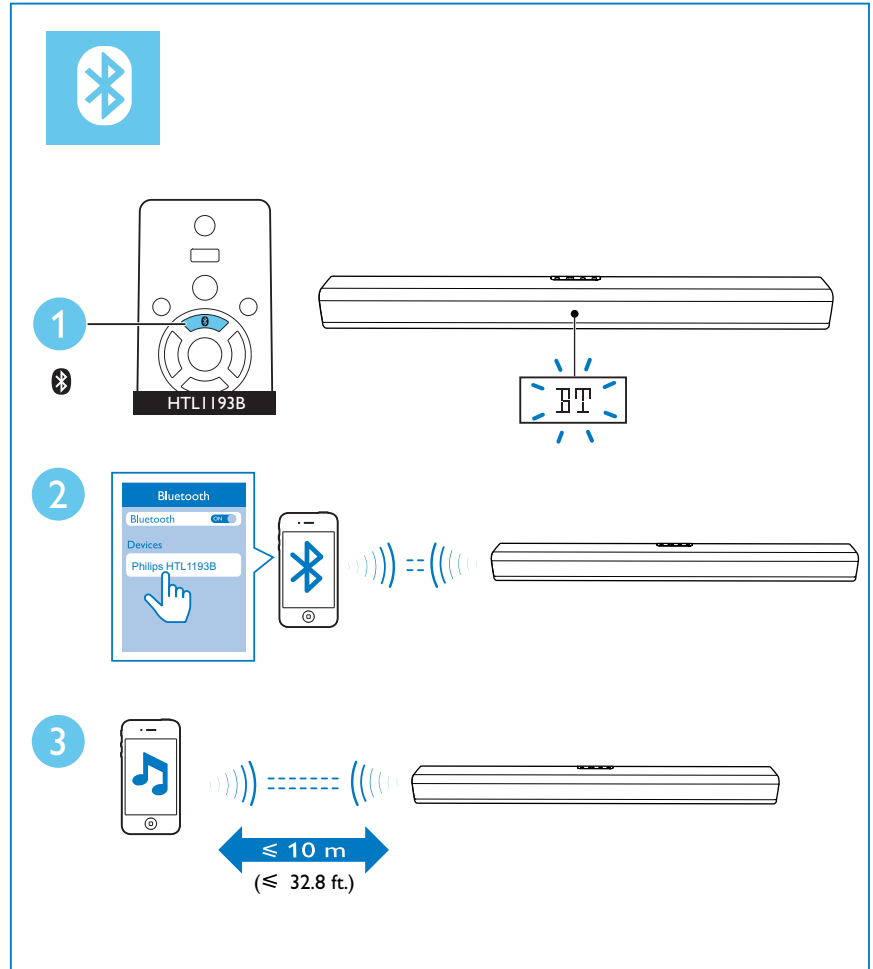
KO 기타 장치 재생

TH เล่นอุปกรณ์อื่น



9

- EN** Play audio through Bluetooth
- DE** Audiowiedergabe über Bluetooth
- ES** Reproducción de audio a través de Bluetooth
- FR** Lecture de musique via Bluetooth
- PT** Reproduzir áudio via Bluetooth
- KO** Bluetooth를 통한 오디오 재생
- TH** เล่นเสียงผ่าน Bluetooth





EN For more information about using this product, visit www.philips.com/support

DE Weitere Informationen zur Verwendung dieses Produkts finden Sie unter www.philips.com/support

ES Para obtener más información sobre este producto, visite www.philips.com/support

FR Pour obtenir davantage d'informations sur l'utilisation de ce produit, rendez-vous sur www.philips.com/support

PT Para mais informações sobre a utilização deste produto, visite www.philips.com/support

KO 본 제품의 자세한 사용 방법을 확인하려면 www.philips.com/support 를 방문하십시오

TH สำหรับข้อมูลเพิ่มเติมเกี่ยวกับ การใช้ผลิตภัณฑ์นี้ โปรดเยี่ยมชม www.philips.com/support



www.philips.com/support



Manufactured under license from Dolby Laboratories. Dolby and the double-D symbol are trademarks of Dolby Laboratories.



The Bluetooth® word mark and logos are registered trademarks owned by Bluetooth SIG, Inc. and any use of such marks by Gibson Innovations Limited is under license. Other trademarks and trade names are those of their respective owners.



Specifications are subject to change without notice
2016 © Gibson Innovations Limited. All rights reserved.
This product has been manufactured by, and is sold under the responsibility of Gibson Innovations Ltd., and Gibson Innovations Ltd. is the warrantor in relation to this product.
Philips and the Philips Shield Emblem are registered trademarks of Koninklijke Philips N.V. and are used under license.

HTL1193B_98_QSG_V3.0

 Be responsible
Respect copyrights

