

Philips
Mini Hi-Fi System

VCD

FWV357



Video CD and MP3-CD Playback

Savor the magic of movies and music on the FWV357 with VCD and MP3-CD playback or to be a Karaoke Star. Enjoy music powerfully enhanced by Dynamic Bass Boost and 1500W PMPO.

Enrich your sound experience

- 2x40W RMS/1500W PMPO
- Bass Reflex speakers deliver a powerful, deeper bass

Longer listening, greater enjoyment

- 3 VCD Changer
- 30 hours of MP3-CD music playback
- Digital tuning with 40 preset stations for extra convenience
- Dual Logic Tape Deck with auto replay

Extensive sound features

- Digital Sound Control for optimized music style settings
- 3-step Dynamic Bass Boost for deep bass experience

Be a singing sensation

- Karaoke for endless karaoke entertainment at home

PHILIPS
sense and simplicity

Highlights

2x40W RMS/1500W PMPO

2x40W RMS/1500W PMPO

Bass Reflex Speaker System

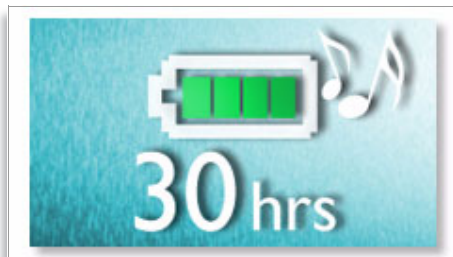


Bass Reflex Speaker System delivers a deep bass experience from a compact loudspeaker box system. It differs from a conventional loudspeaker box system in the addition of a bass pipe that is acoustically aligned to the woofer to optimize the low frequency roll-off of the system. The result is deeper controlled bass and lower distortion. The system works by resonating the air mass in the bass pipe to vibrate like a conventional woofer. Combined with the response of the woofer, the system extends the overall low frequency sounds to create a whole new dimension of deep bass.

3 VCD Changer

3 VCD Changer

30 hours of MP3-CD music



MP3 stands for "MPEG 1 Audio layer-3".MP3 is a revolutionary compression technology by which large digital music files can be made up to 10 times smaller without radically degrading their audio quality. MP3 has become the

standard audio compression format used on the world wide web, allowing quick and easy audio file transfer.

40-preset digital tuning

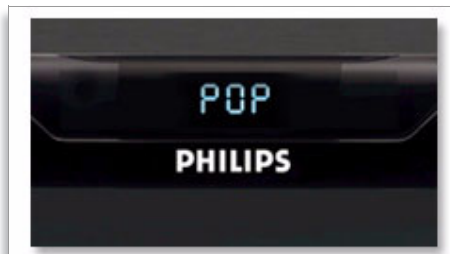


Digital radio offers you additional music options to your music collection on your Philips audio system. Simply tune into the station that you want to preset, press and hold the preset button to memorize the frequency. With preset radio stations that can be stored, you can quickly access your favorite radio station without having to manually tune the frequencies each time.

Dual Logic Tape Deck

Dual Logic Tape Deck with auto replay

Digital Sound Control



Digital Sound Control offers you a choice of pre-set Jazz, Rock, Pop and Classic controls you can use to optimise the frequency ranges for different musical styles. Each mode uses graphic equalizing technology to automatically adjust the sound balance and enhance the most important sound frequencies in your chosen music style. Ultimately, Digital Sound Control

makes it easy for you get the most out of your music by precisely adjusting the sound balance to match the type of music you are playing.

3-step Dynamic Bass Boost



Dynamic Bass Boost maximizes your music enjoyment by emphasizing the bass content of the music throughout the range of volume settings - from level one to level three - at the touch of a button! You can customize the bass level that fits your style. Bottom-end bass frequencies usually get lost when the volume is set at a low level. To counteract this, Dynamic Bass Boost can be switched on to boost bass levels, so you can enjoy consistent sound even when you turn down the volume.

Karaoke



The Karaoke feature on your DVD player provides endless entertainment and maximum audio and singing enjoyment. You can enhance your performance by adding an 'echo' effect to your voice. The key controls allows you to choose the optimal key for your personal vocal range.

Specifications

Sound

- Output Power: 1500W PMPO
- Sound Enhancement: Digital Sound Control, Dynamic Bass Boost

Loudspeakers

- Main Speaker: 4" woofer, Bass Reflex Speaker System

Video Playback

- Playback Media: Video CD
- Disc Playback Modes: A-B Repeat
- Loader Type: Motorised
- Number of Discs: 3
- Video disc playback system: NTSC, PAL

Audio Playback

- Playback Media: CD, CD-R, CD-RW, MP3-CD
- Disc Playback Modes: 99-Track Programmable, Repeat/one/all/program, Repeat/one/disk/program
- Cassette Deck Technology: Logic
- Cassette Playback Modes: Electronic Speed Control, Full Auto Stop
- Number of decks: 2

Audio Recording

- Recording Media: Tape
- Tape Recording Enhancement: Automatic Recording Level, CD Synchro Start Recording

Tuner/Reception/Transmission

- Auto digital tuning

- Station presets: 40
- Tuner Bands: FM Stereo, MW
- Tuner Enhancements: Auto Store, Easy Set (Plug & Play)

Connectivity

- Aux in: Line in
- Headphone: 3.5 mm
- Microphone: Microphone socket
- Other connections: Composite video (CVBS) out, FM Antenna, MW Antenna

Convenience

- Alarms: CD Alarm, Radio Alarm, Sleep timer
- Clock: On main display
- Display Type: FTD
- Karaoke: Echo control, Key control, MIC volume

Accessories

- Included Accessories: AC Power Cord, FM/MW Antenna
- Remote control: 42-key

Dimensions

- Set dimensions (W x H x D): 265 x 310 x 355 mm
- Main speaker dimensions (W x H x D): 210 x 310 x 235 mm
- Packaging dimensions (W x H x D): 619 x 410 x 474 mm
- Weight incl. Packaging: 11.7 kg



Issue date 2009-05-22

Version: 2.0.3

12 NC: 9073 100 12963
EAN: 87 10895 91785 8

© 2009 Koninklijke Philips Electronics N.V.
All Rights reserved.

Specifications are subject to change without notice.
Trademarks are the property of Koninklijke Philips
Electronics N.V. or their respective owners.

www.philips.com