

Always there to help you

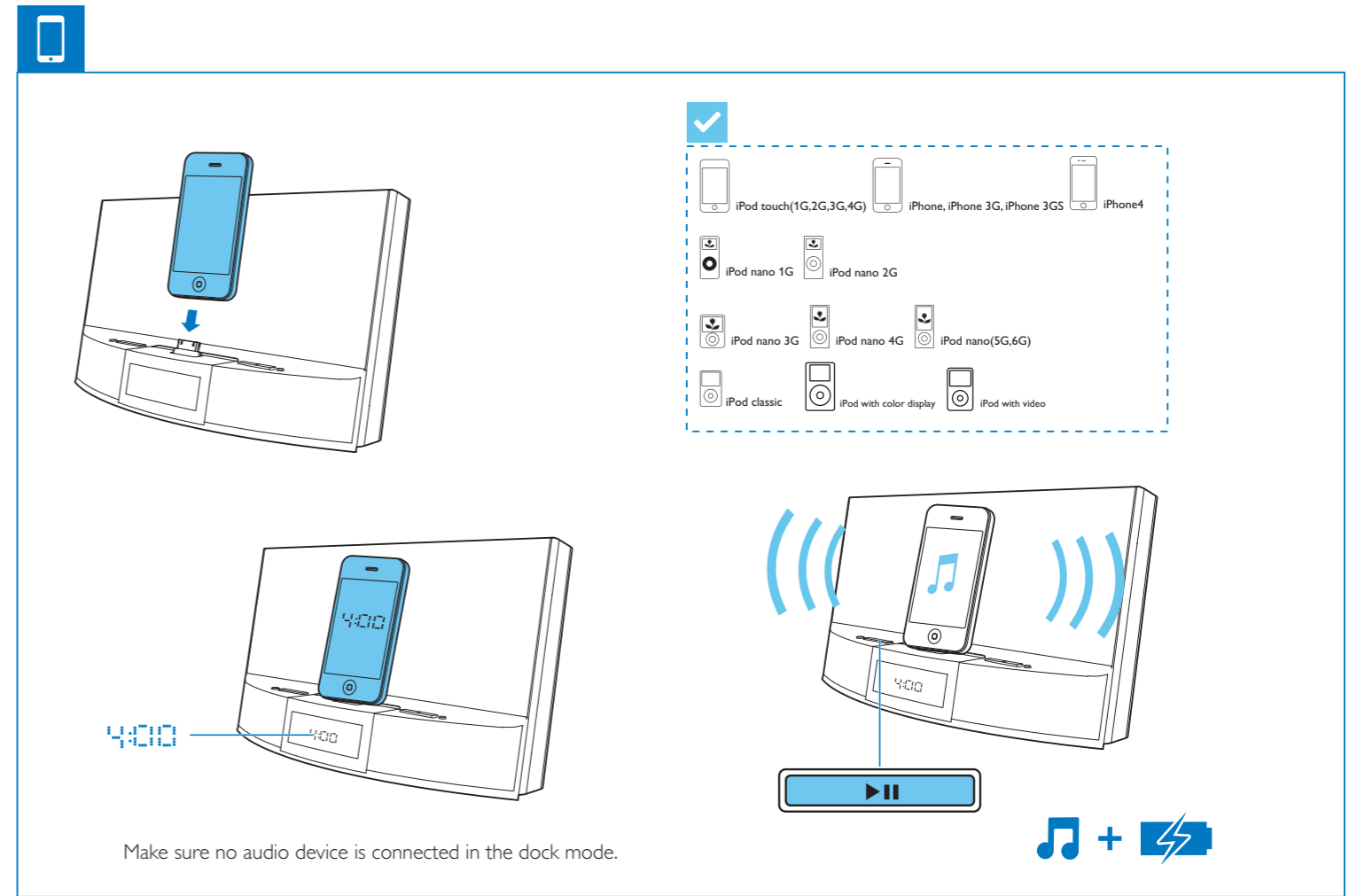
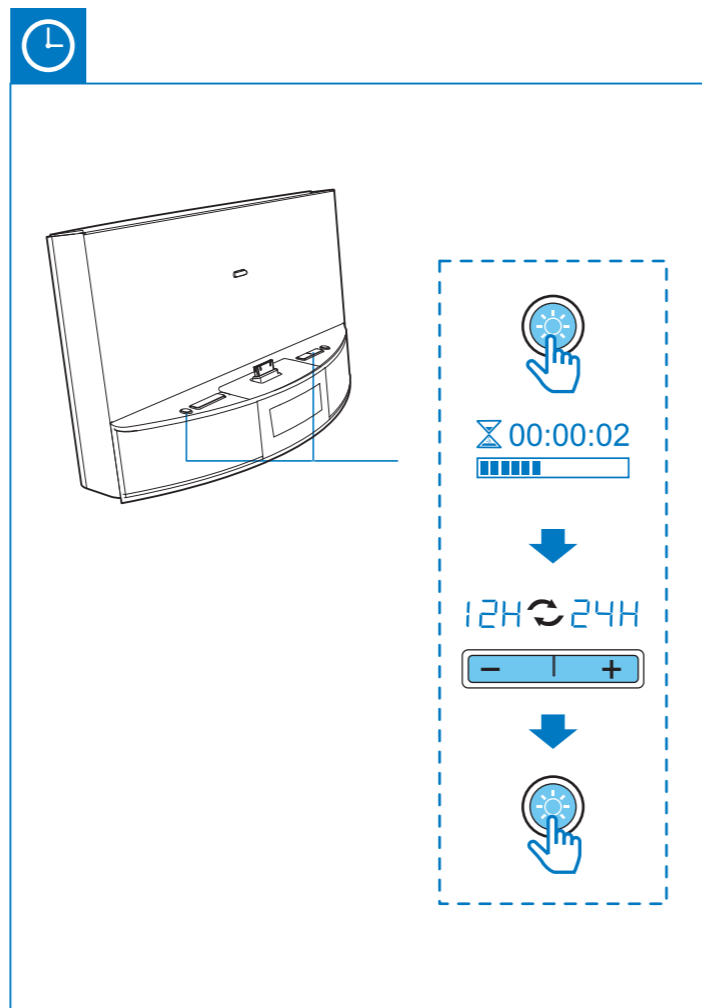
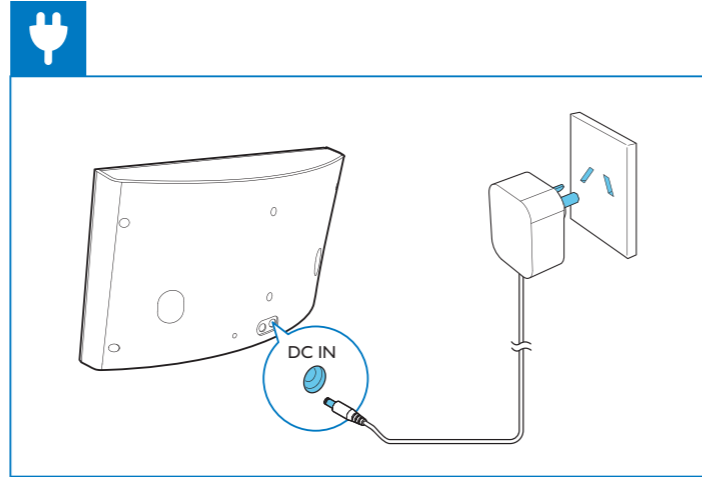
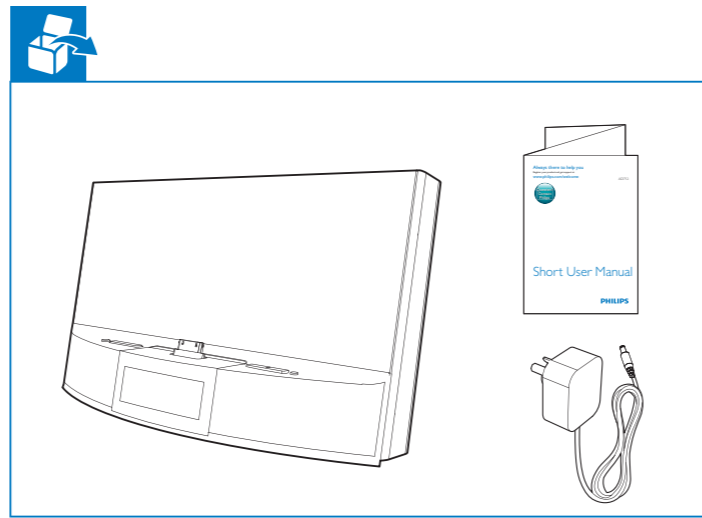
Register your product and get support at www.philips.com/welcome

AD712

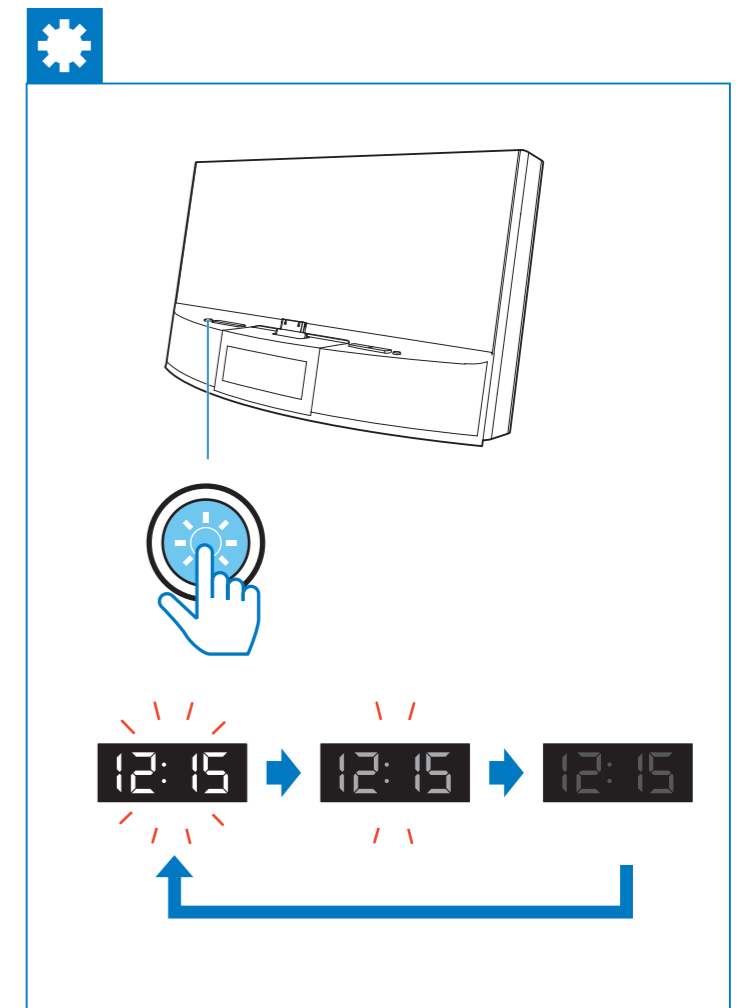
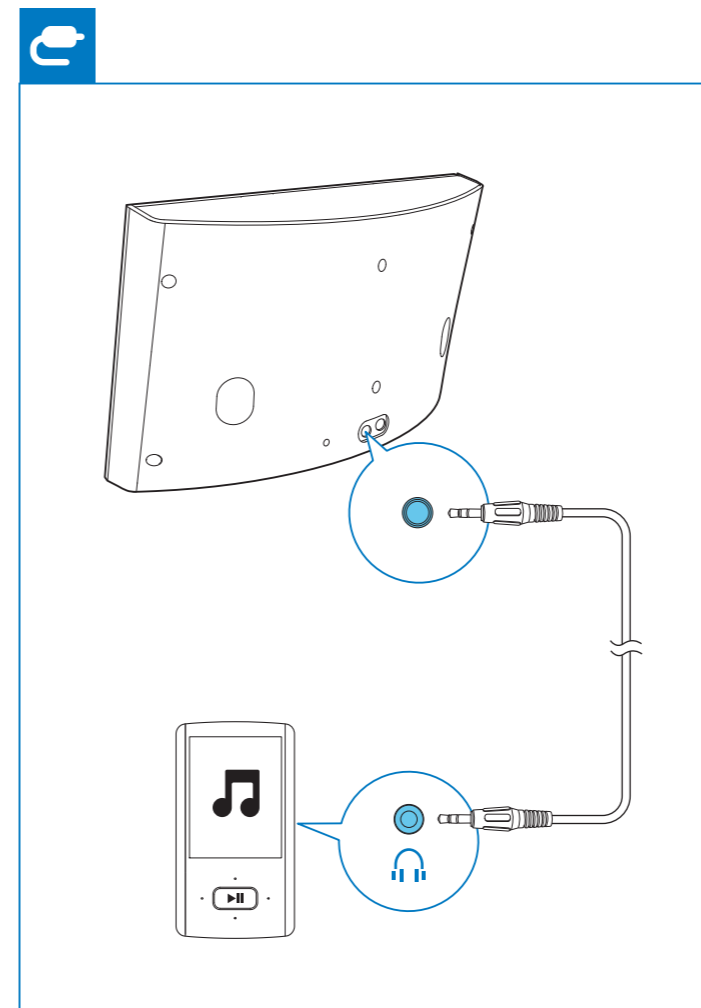


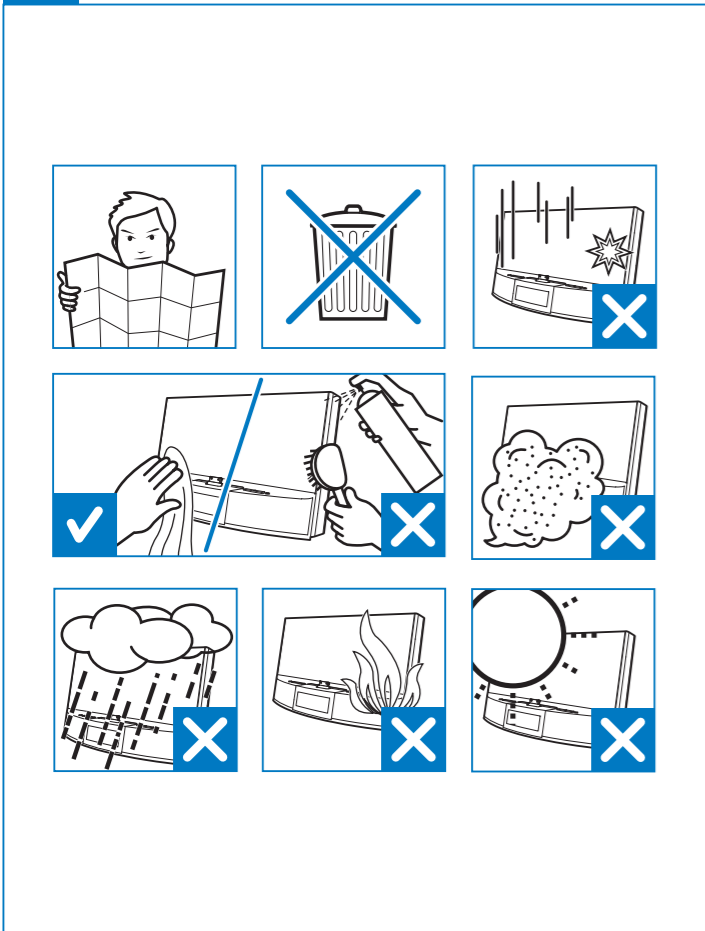
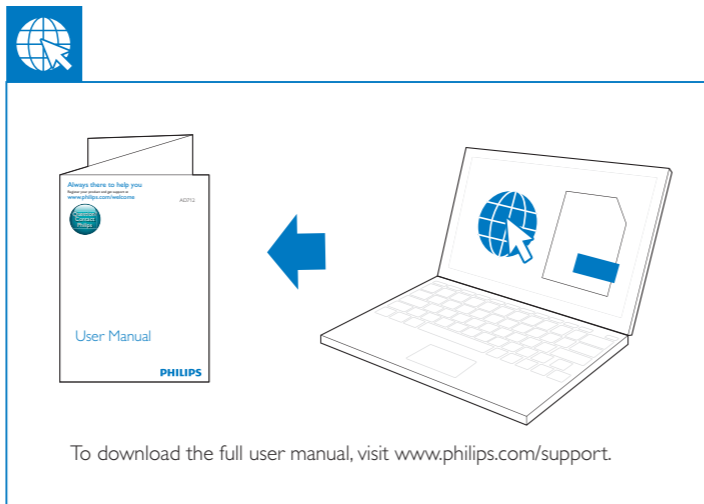
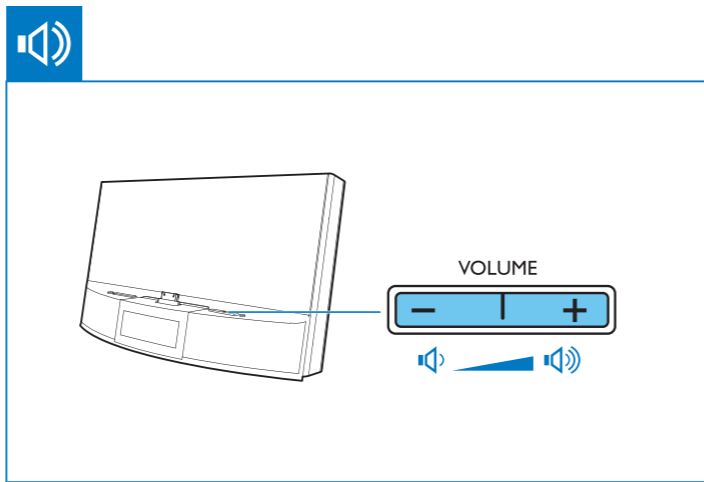
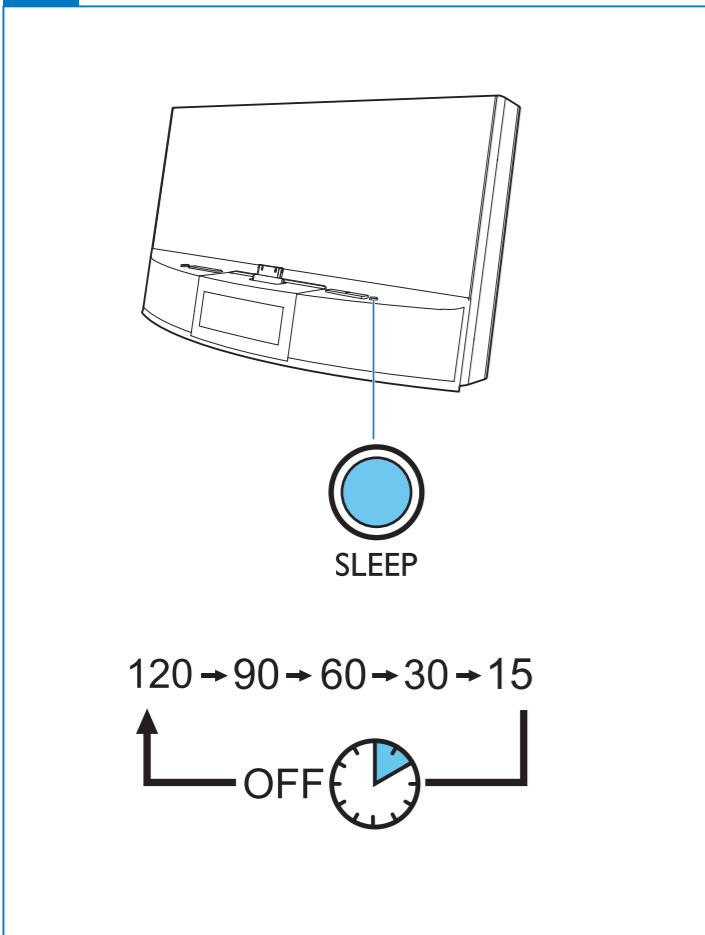
Short User Manual

PHILIPS



Make sure no audio device is connected in the dock mode.





1 Important

- Read these instructions.
- Follow all instructions.
- Do not block any ventilation openings. Install in accordance with the manufacturer's instructions.
- Do not install near any heat sources such as radiators, heat registers, stoves, or other apparatus (including amplifiers) that produce heat.
- Protect the power cord from being walked on or pinched, particularly at plugs, convenience receptacles, and the point where they exit from the unit.
- Only use attachments/accessories specified by the manufacturer.
- Unplug this unit during lightning storms or when unused for long periods of time.
- Refer all servicing to qualified service personnel. Servicing is required when the unit has been damaged in any way, such as power-supply cord or plug is damaged, liquid has been spilled or objects have fallen into the apparatus, the unit has been exposed to rain or moisture, does not operate normally, or has been dropped.
- The unit shall not be exposed to dripping or splashing.
- Do not place any sources of danger on the unit (e.g. liquid filled objects, lighted candles).
- Where the plug of the Direct Plug-in Adapter is used as the disconnect device, the disconnect device shall remain readily operable.

Warning

- Never remove the casing of this apparatus.
- Never lubricate any part of this apparatus.
- Never place this apparatus on other electrical equipment.
- Keep this apparatus away from direct sunlight, naked flames or heat.
- Ensure that you always have easy access to the power cord, plug or adaptor to disconnect the apparatus from the power.

2 Notice

Any changes or modifications made to this device that are not expressly approved by Philips Consumer Lifestyle may void the user's authority to operate the equipment.

"Made for iPod" and "Made for iPhone" mean that an electronic accessory has been designed to connect specifically to iPod or iPhone respectively, and has been certified by the developer to meet Apple performance standards. Apple is not responsible for the operation of this device or its compliance with safety and regulatory standards. Please note that the use of this accessory with iPod or iPhone may affect wireless performance. iPod and iPhone are trademarks of Apple Inc., registered in the U.S. and other countries.



Disposal of your old product and batteries

Your product is designed and manufactured with high quality materials and components, which can be recycled and reused. Never dispose of your product with other household waste. Please inform yourself about the local rules on the separate collection of electrical and electronic products and batteries. The correct disposal of these products helps prevent potentially negative consequences on the environment and human health. Please visit www.recycle.philips.com for additional information on a recycling center in your area.

Environmental information

All unnecessary packaging has been omitted. We have tried to make the packaging easy to separate into three materials: cardboard (box), polystyrene foam (buffer) and polyethylene (bags, protective foam sheet.) Your system consists of materials which can be recycled and reused if disassembled by a specialized company. Please observe the local regulations regarding the disposal of packaging materials, exhausted batteries and old equipment.

PHILIPS

sense and simplicity

Philips Electronics Australia Limited and Philips New Zealand Limited

Warranty against Defects

In this warranty:

We or us means Philips Electronics Australia Limited ACN 008 445 743 or Philips New Zealand Limited (Company Number 1723), and our contact details are set out at the end of this warranty;

You means you, the original end-user purchaser of the Goods;

Supplier means the authorised distributor or retailer of the Goods that sold you the Goods in Australia or New Zealand; and

Goods means the product or equipment which was accompanied by this warranty and purchased in Australia or New Zealand.

If you require assistance with the operation of the product, its features or specifications please call the Philips Consumer Care Centre on 1300 363 391 in Australia or 0800 658 224 in New Zealand.

Australia: Our Goods come with guarantees that cannot be excluded under the Australian Consumer Law. You are entitled to a replacement or refund for a major failure and for compensation for any other reasonably foreseeable loss or damage. You are also entitled to have the Goods repaired or replaced if the goods fail to be of acceptable quality and the failure does not amount to a major failure.

New Zealand: Our Goods come with guarantees that cannot be excluded under the Consumer Guarantees Act 1993. This guarantee applies in addition to the conditions and guarantees implied by that legislation.

In addition to any rights and remedies that you may have under the Australian or New Zealand Consumer Law or any other law, we provide the following warranty against defects:

1. If, during the first 1 year from their date of purchase from the Supplier (**Warranty Period**), the Goods prove defective by reason of improper workmanship or material, we will repair or replace the Goods without charge.
2. We are under no obligation to repair or replace the Goods under clause 1 if the Goods have been improperly used (including any commercial use), installed, not maintained in accordance with the manufacturer's instructions, operated or repaired, or damaged or abused.
3. Should we elect in our absolute discretion to replace the Goods pursuant to clause 1, we may substitute any similar good even if it is not on our current price/equipment list. Any replacement product is warranted for the time remaining on the original Warranty Period (from the date of original purchase).
4. The warranty granted under clause 1 is limited to repair or replacement only. As far as the law permits, we will not be liable for any loss or damage caused to property or persons arising from any cause whatsoever.
5. In order to claim under the warranty granted under clause 1 you must:
 - a. return the Goods to the Supplier or to an Authorised Service Centre by prepaid freight within the Warranty Period, accompanied with the legible and unmodified original proof of purchase, which clearly indicates the name and address of the Supplier, the date and place of purchase and the product name;
 - b. contact us on 1300 363 391 in Australia or on 0800 658 224 in New Zealand within the Warranty Period; or
 - c. contact the Supplier or Authorised Service Centre within the Warranty Period.
6. This warranty does not cover the cost of claiming under the warranty or transport of the Goods to and from the Supplier or us.
7. This warranty is only valid and enforceable in Australia and New Zealand.

Contact us or the place of purchase for further details.

Philips Electronics Australia Limited
Level 1, 65 Epping Rd,
North Ryde, SYDNEY NSW 2113
Consumer Care: 1300 363 391
E-mail: pceinfo.australia@philips.com
Website: www.philips.com/support

Philips New Zealand Limited
Level 2, 1 Nugent St,
Grafton, AUCKLAND, 1023
Consumer Care: 0800 658 224
Email: pceinfo.australia@philips.com
Website: www.philips.com/support

Note

- The type plate is located on the bottom of the apparatus.

3 Product information

Note

- Product information is subject to change without prior notice.

Specifications

Amplifier

Rated Output Power	20W RMS
Signal to Noise Ratio	>62dBA
Aux Input (MP3 link)	650mV RMS

General information

AC Power	Model: AS190-100-AM180; Input: 100-240 V ~, 50/60Hz, 0.7A; Output: 10V = 1.8A
Operation Power Consumption	<12 W
Standby Power Consumption	<1 W
Max. Load for iPod/iPhone	5 V, 1 A
Dimensions	
- Main Unit (W x H x D)	290 x 159 x 113 mm
Weight	
- With Packing	1.9 kg
- Main Unit	1.5 kg