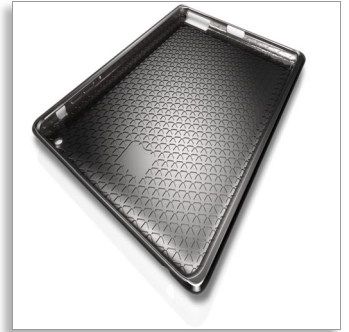


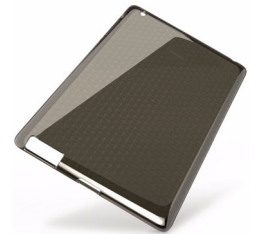


Philips  
Soft-shell case

for iPad 2



DLN1771



## A perfect fit

for iPad protection and grip

This soft and pliable case features a wrap-around design for all-over iPad protection with an easy grip and snug fit. Translucent ShockStop material absorbs shock and cushions your device while providing access to all functions & ports.

### Attractive protection

- Shock-absorbing case also adds grip
- Quick and easy protection in a snap
- Wrap-around protection for the corners and face

### Protection on the go

- Slim design fits easily into your bag

### Convenient access

- Full iPad functionality while protected

# PHILIPS

sense and simplicity

# Specifications

## Compatibility

- Compatible with: iPad

## Design and finishing

- Color(s): Charcoal
- Materials: Thermoplastic polyurethane

## Packaging dimensions

- Type of shelf placement: Dummy
- Packaging type: Dummy
- Number of products included: 1
- Packaging dimensions (W x H x D):  
20 x 26,8 x 1,2 cm
- Gross weight: 0,152 kg
- Nett weight: 0,1032 kg
- Tare weight: 0,0488 kg
- EAN: 87 12581 60304 5

## Outer Carton

- Number of consumer packagings: 36
- Outer carton (L x W x H): 51,3 x 29,4 x 23,4 cm
- Gross weight: 6,74 kg
- Nett weight: 3,7152 kg
- Tare weight: 3,0248 kg
- GTIN: 1 87 12581 60304 2

## Inner Carton

- Number of consumer packagings: 6
- Inner carton (L x W x H): 27,8 x 8 x 21,2 cm
- Gross weight: 1,012 kg
- Nett weight: 0,6192 kg
- Tare weight: 0,3928 kg
- GTIN: 2 87 12581 60304 9

# Highlights

## Shock-absorbing case

This case is made out of thermoplastic polyurethane which is a high-performance elastomer to add both grip and shock-absorption in one unique case.



Issue date 2011-11-07

Version: 3.2.6

12 NC: 8670 000 76196  
EAN: 87 12581 60304 5

© 2011 Koninklijke Philips Electronics N.V.  
All Rights reserved.

Specifications are subject to change without notice.  
Trademarks are the property of Koninklijke Philips  
Electronics N.V. or their respective owners.

[www.philips.com](http://www.philips.com)