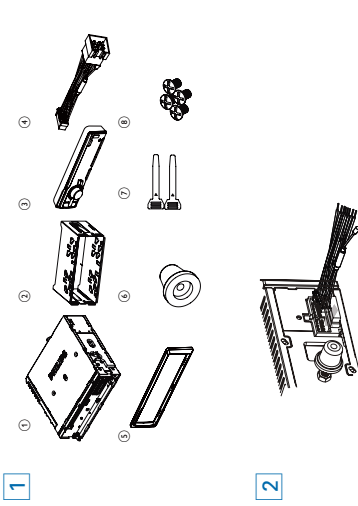


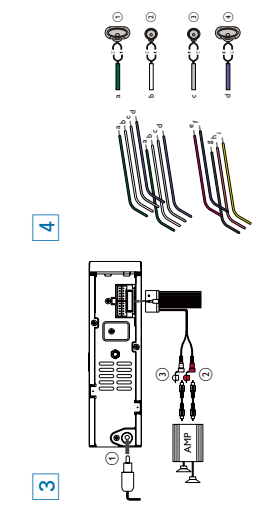


EN Quick Start Guide

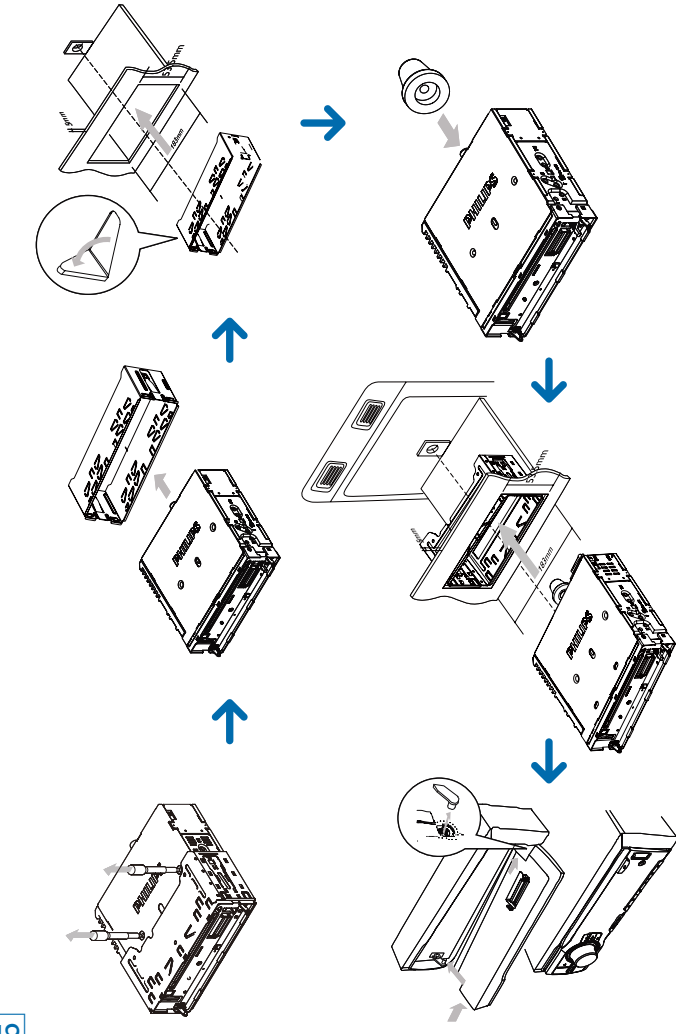
# PHILIPS



1



2



3

**Overview of parts 1**

- 1. Check and identify the contents of your package:
- 1 In-car audio system
- 2 Screw
- 3 Front panel
- 4 Trim plate
- 5 Rubber cushion
- 6 Disassembly tools
- 7 Screws (4 pieces)
- 8 ISO connector

**Connect wires**

**Caution**  
• Ensure that all loose leads are insulated with electrical tape.

**For cars with ISO connectors 2**

- 1 Pull out the ISO connectors from car dashboard and connect them to the bigger end of the supplied standard connector.
- 2 Connect the other end of the supplied standard connector to the unit.
- 3 Connect the antenna and amplifier as illustrated, if applicable. You can connect the car audio to the amplifier through RCA-TO-RCA cables (not supplied).

**Connector**

Connector	Connect to
1 ANTENNA	Antenna
2 REAR LINE OUT R	Rear right speaker
3 REAR LINE OUT L	Rear left speaker

**For cars without ISO connectors 3**

**Caution**

- Be sure to connect the black ground (earth) lead first.
- 1 Connect the antenna and amplifier as illustrated, if applicable.
- 2 Cut off the bigger end of the supplied standard connector.
- 3 Check the cars wiring carefully and connect them to the supplied standard connector.
- 4 Connect the supplied standard connector to the unit.

**1**

1 Green/black strip	Left speaker (Rear)
2 White/black strip	Left speaker (Front)
3 Gray/black strip	Right speaker (Front)
4 Purple/black strip	Right speaker (Rear)

5

**Ignition key +12V DC when ON/ACC**

- f BLUE Motor/electric antenna relay control lead/ Amplifier relay control lead
- g BLACK Ground
- h Orange Illumination switch
- i YELLOW To the +12V car battery which is energized at all times

**Note**

- Check wire connection before you mount the unit into a car.
- If preset radio stations are lost when the ignition key is turned OFF and then back ON, reconnect the red leads crosswise to the yellow ones.

**Attach the front panel 5**

- 1 Attach the trim plate.
- 2 Insert the right side of the panel in the chassis, until it is correctly engaged.
- 3 Press the left side of the panel and point the left hole at the left pillar.
- 4 Release the panel to engage the left side.

**Mount in the dashboard 5**

- 1 If the car does not have an on-board drive or navigation computer, disconnect the negative terminal of the car battery. If you disconnect the car battery in a car that has an on-board drive or navigation computer, the computer may lose its memory. If the car battery is not disconnected, to avoid short-circuit, ensure that bare wires do not touch each other.

**Remove the two screws on the top of the unit.**

- 2 Remove the mounting sleeve with the supplied disassembly tools.
- 3 Ensure that car dashboard opening is within these measurements:
- 4 Install the sleeve into the dashboard and bend the tabs outward to fix the sleeve.
- 5 Place the rubber cushion over the end of the bolt.
- 6 Slide the unit into the dashboard until you hear a click sound.
- 7 Reconnect the negative terminal of the car battery.

**Turn on**

- 1 Press **0** to turn on the unit.
- To turn off the unit, press **0** for 3 seconds.

**Set clock**

- 1 Press **MENU/DISP** for 3 seconds.
- 2 Press **▲** or **▼** repeatedly until the currently time is displayed.
- 3 Turn **0** clockwise to set hour.
- 4 Press **0** to confirm.
- 5 Turn **0** anti-clockwise to set minute.
- 6 Press **0** to confirm.

**View clock**

- 1 Press **MENU/DISP** repeatedly until the clock is displayed.

**Listen to radio**

- 1 Press **SOURCE** repeatedly to select Radio.
- 2 Press **▲** or **▼** to select band: **[FM1]** **[FM2]** **[FM3]** **[AM1]** or **[AM2]**.
- 3 Press **◀** or **▶** to tune to a radio station manually.
  - To search for a radio station automatically, press **◀▶** for 3 seconds.

**Play audio files**

- 1 Press **▶** on the front panel to release the panel.
- 2 Insert a CD with the printed side facing up.
- 3 Close the panel.
  - Play starts automatically.
  - To pause CD play, press **⏸** again.
  - To resume CD play, press **▶** again.

**Insert the USB device**

- 1 Open the cover marked **ⓘ** on the front panel.
- 2 Insert the USB device into the USB socket.
  - The unit starts playing from the USB device automatically.