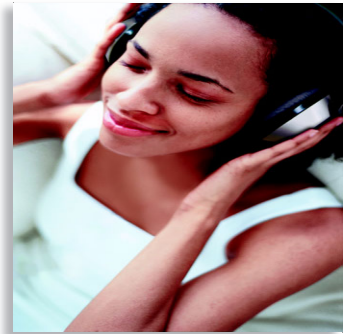




Philips
Wireless HiFi Headphone



SHC8545

Superb wireless music

with ultra convenience of auto tuning

Freedom to enjoy music around your home. HiFi sound reproduction with auto tuning feature, this stereo headphone is the ultimate in personal convenience.

You'll forget you're wearing them!

- 3-way adjustment for a better fit and bass performance
- Pre-formed ear-cushions ensure a comfortable fit

The perfect wireless listening experience

- The whole ear is covered to optimize sound quality
- 40mm speaker driver delivers sound without distortion

Always ready to go

- FM Wireless transmission for freedom of movement
- Automatic tuning simplifies tuning reception frequency
- Energizing docking station stores and re-charges receiver



PHILIPS
sense and simplicity

Specifications

Sound

- **Acoustic system:** Closed
- **Frequency response:** 10 - 22 000 Hz
- **Magnet type:** Neodymium
- **Sensitivity:** 100 dB
- **Signal/noise ratio:** ~70dB
- **Speaker diameter:** 40 mm

Tuner/Reception/Transmission

- **Channel separation:** > 30 dB
- **Pilot tone frequency:** 19 kHz
- **Effective range:** 100 m
- **Carrier frequency range:** 863.0 - 865.0 MHz
- **Modulation:** FM
- **Automatic channel selection**
- **Number of channels:** 3

Convenience

- **Automatic power off**
- **Battery charging indication**
- **Battery low indication**
- **Double PLL**
- **Operating time:** +/- 15 hours

Power

- **Power supply headphone:** 2 x 1.5 V NiMH R03/AAA
- **Power supply transmitter:** AC/DC adapter 12V/200mA

Outer Carton 2

- **I2NC:** 9082 100 07826
- **EAN/UPC/GTIN:** 6 09585 11185 1
- **Gross weight:** 3.132 kg
- **Height:** 342 mm
- **Length:** 273 mm
- **Quantity:** 2
- **Tare weight:** 0.670 kg
- **Width:** 251 mm

Packaging Data

- **I2NC:** 908210007826
- **EAN/UPC/GTIN:** 6 09585 11184 4
- **Gross weight:** 1.231 kg
- **Height:** 302 mm
- **Length:** 231 mm
- **Quantity:** 1
- **Tare weight:** 0.433 kg
- **Width:** 124 mm

Product highlights

3-way adjustable ear shells

Enjoy a comfortable fit and experience better bass performance thanks to the three-way adjustable ear shells that fit naturally around your ears.

Ergonomic design earcushions

The ergonomic three-dimensional earcushion shape evenly distributes the load for a better and more comfortable fit.

Full size design

Full-size earshells not only cover your whole ear for better sound quality, but also provide space for a larger, higher performance driver.

40 mm speaker driver

The 40 mm speaker driver is made of a composite Mylar material for a highly sensitive yet powerful element that delivers sound without audible distortion.

FM Wireless transmission

With high frequency FM wireless transmission, which can even pass through walls, you can even listen to your music when you're in another room.

Automatic tuning

Pressing the handy tuning button on the headphone sets the microprocessor-controlled circuit going to optimally tune the transmission frequency for the best possible reception and superb audio quality.

Energizing docking station

The docking station is the most convenient way to store your receiver when not in use. At the same time, it will recharge your receiver unit and have it ready for use at any moment.



Issue date 2007-12-06

Version: 1.0

I2 NC: 9082 100 07826
UPC: 6 09585 11184 4

© 2007 Koninklijke Philips Electronics N.V.
All Rights reserved.

Specifications are subject to change without notice.
Trademarks are the property of Koninklijke Philips
Electronics N.V. or their respective owners.

www.philips.com