

**PHILIPS**

Replacement  
Remote

SRP4010



## Replacement Remote for Samsung® TVs

Ersatzfernbedienung für Samsung® Fernseher

Télécommande de remplacement pour téléviseurs Samsung®

# User manual

Register your product and get support at  
[www.philips.com/support](http://www.philips.com/support)

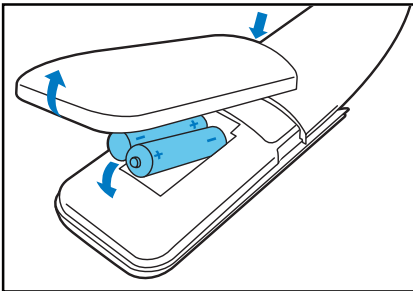
# Contents

Insert batteries (not included)	2
Introduction	2
Manual set up by code selection	3
Auto IR code search	4
Code Learning	5
Disposal of your old product and battery	6
Frequently asked questions	7
Need help?	7

# Your replacement remote

Congratulations on your purchase, and welcome to Philips! To fully benefit from the support that Philips offers, register your product at [www.philips.com/welcome](http://www.philips.com/welcome)

## Insert batteries (not included)



### Warning

- Check the battery polarity when inserting in the battery compartment. Incorrect polarity may damage the product.

### Caution

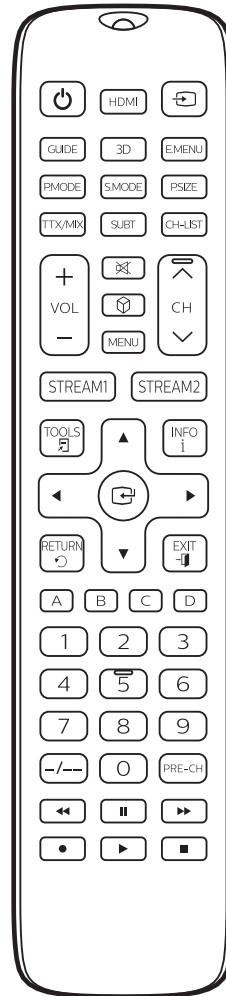
- Risk of explosion! Keep batteries away from heat, sunshine or fire. Never discard batteries in fire.
- Risk of decreased battery life! Never mix different brands or types of batteries.

### Note

- When you replace the batteries, all user settings will be retained in the memory of the universal remote for 5 minutes.

## Introduction

The TV replacement remote RRC has pre-programmed the most updated IR code and is ready to use.

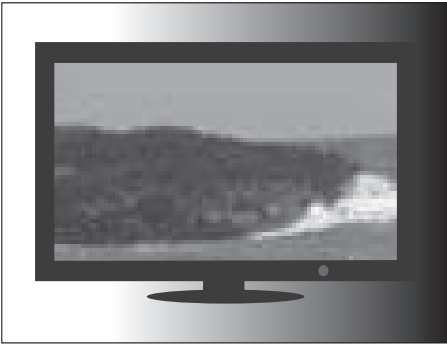


## Manual set up by code selection

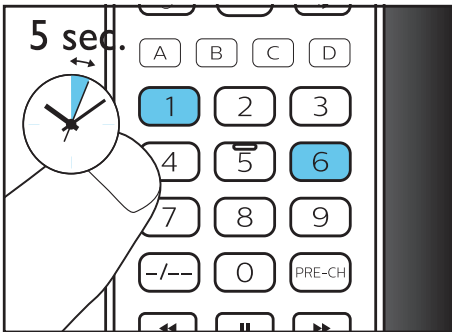
The replacement remote RRC has pre-programmed the most updated IR code and is ready to use. If it does not work, you can manually select the code from our list that can fit your TV.

### Set up by code selection

- 1 Switch on your TV.



- 2 Press and hold **1** and **6** at the same time for 5 seconds until the red LED is on.



- 3 Look up the available 5-digit code. The most popular code is listed first. The factory default code is **00000**.

### List of IR code for Samsung and Philips TVs

Samsung TV	Philips TV	Philips TV
00000	00100	00113
00001	00101	00114
00002	00102	00115
00003	00103	00116
00004	00104	00117
00005	00105	00118
00006	00106	00119
00007	00107	00120
00008	00108	
00009	00109	
00010	00110	
00011	00111	
00012	00112	

- 4 Enter the selected 5-digit code using the digit buttons.
- 5 If the light is off, a valid code is saved. Otherwise, the light will flash six times, and then remains on for code re-entry.

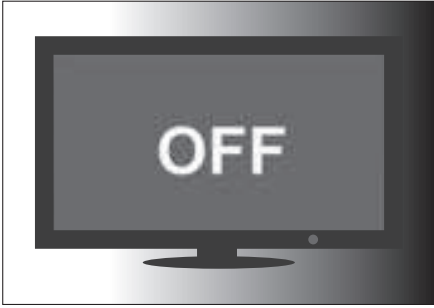


#### Note

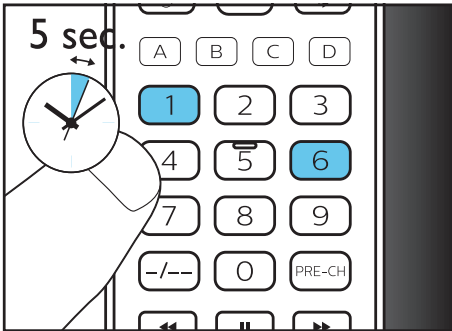
- It is possible sometimes that your device only responds to some of the buttons. In such case, set up with the next code in the code list, and try operating your device again. If there spill problem on code or key, you can try to learn a key by learning function if the remote support learning function.

## Auto IR code search

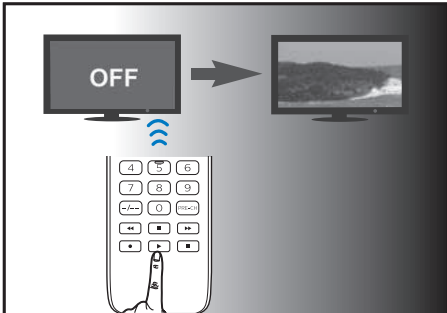
- 1 Turn off your TV with stand-by power



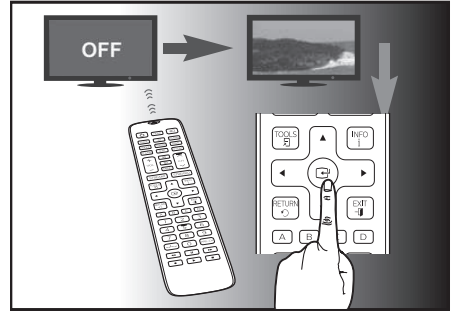
- 2 Press and hold **1** and **6** at the same time for 5 seconds until the red LED is on.



- 3 While pointing at your TV with the RRC, press and release the PLAY button once, it sends Power On/Off command of an IR code from our list.



- 4 When the TV turn on (it might takes a few seconds for some TV to power on), you can try other keys (except PLAY and STOP) to see if the TV response.



- 5 You can press STOP to confirm and exit the search. If most of the other keys does not work properly, turn off your TV and press PLAY again to try the next code.

### Note

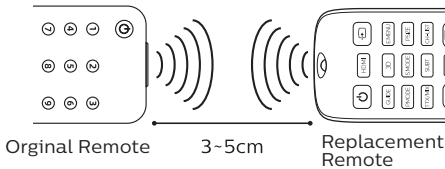
- It is possible sometimes that your device only responds to some of the buttons. In such case, set up with the next code in the code list, and try operating your device again. If there spill problem on code or key, you can try to learn a key by learning function if the remote support learning function.

## Code Learning

You must have an original remote for the Replacement Remote Control (RRC) to learn code from it.

### Learn commands

- 1 Press and hold **1** and **6** at the same time for 5 seconds until the red LED is on.
- 2 Enter the learning code **9 9 9 0 0**. The red LED light will flash once and then remains on.
- 3 Place the RRC and the original remote, head to head aiming at each other, on a flat surface.



- 4 On the RRC, press the button that you would like to learn a code from the original remote. The LED will flash twice and stay on.
- 5 On the original remote, press and hold the button that you would like to learn from for 2 seconds.
- 6 The LED will blink once and stay on if the learning was successful. To learn another key, repeat Step 4. To exit, press **1** and **6** at the same time.
- 7 The LED will blink 6 times quickly if learning failed. Repeat Step 4 to learn again.

### Note

- On step 4, if no key is selected for more than 15 seconds, the LED indicator will flash six times and the learning mode will exit automatically.
- On step 5, if no other remote signal is received for more than 30 seconds, the LED indicator will flash six times and then remains on. You will need to select a desired key again for learning as in step 4 on your replacement remote control.
- Each function key will hold only one command, a new command to be learned will automatically replace the previous one.

### Clear learned commands

#### Clear all codes learned for the replacement remote control

- 1 Press and hold **1** and **6** at the same time for 5 seconds until the red LED is on.
- 2 Enter the learning code **9 9 9 1 0**. The red LED light will remain on briefly, flash twice and then turns off.  
↳ All codes learned for the replacement remote control will be cleared.

---

## Disposal of your old product and battery



Your product is designed and manufactured with high quality materials and components, which can be recycled and reused.



This symbol on a product means that the product is covered by European Directive 2012/19/EU.



This symbol means that the product contains batteries covered by European Directive 2013/56/EU which cannot be disposed of with normal household waste.

Inform yourself about the local separate collection system for electrical and electronic products and batteries. Follow local rules and never dispose of the product and batteries with normal household waste. Correct disposal of old products and batteries helps prevent negative consequences for the environment and human health.

### Removing the disposable batteries

To remove the disposable batteries, see section 'Insert batteries'.



When this logo is attached to a product, it means a financial contribution has been paid to the associated national recovery and recycling system.

### Environmental information

All unnecessary packaging has been omitted. We have tried to make the packaging easy to separate into three materials: cardboard (box),

polystyrene foam (buffer) and polyethylene (bags, protective foam sheet.) Your system consists of materials which can be recycled and reused if disassembled by a specialized company. Please observe the local regulations regarding the disposal of packaging materials, exhausted batteries and old equipment.

---

## Frequently asked questions

### **My replacement remote does not work at all.**

- Check if you have correctly setup the device with the right code. Check if you have pressed the corresponding device key for your device.
- Check if the batteries are inserted properly. If the battery level is low, replace the batteries.
- Check if your device is powered on.

### **If several device codes are listed under the brand of my device, how can I select the correct device code?**

To seek the correct device code, test the codes one by one. The codes are sorted by popularity, and the most popular code is listed first.

### **My device responds only to some of the commands.**

You have set a code for which only some commands work properly but some do not. Try other codes until most keys work properly or learn the key from original remote if it support learning function.

---

## Need help?

We advise you to first read this user manual carefully. It helps you set up and use the replacement remote.

If, however, you require extra information or have additional questions about setup, usage, warranty, etc of the RRC, you can always contact us.

When calling our helpline, make sure to have the RRC at hand when you call, so that our operators can help you determine whether RRC is working properly.

You will find our contact details at the end of this user manual. For online support, visit

**[www.philips.com/support](http://www.philips.com/support)**





Specifications are subject to change without notice.  
Philips and the Philips Shield Emblem are registered trademarks of Koninklijke Philips N.V. and are used under license.  
This product has been manufactured by and is sold under the responsibility of MMD Hong Kong Holding Limited or one of its affiliates, and MMD Hong Kong Holding Limited is the warrantor in relation to this product.

SRP4010\_10\_UM\_V1.0

PVision Europe B.V.  
Prins Bernhardplein 200 1097  
JB Amsterdam The Netherlands  
Authorised Representative  
UKCA Experts Ltd.  
Dept 302, 43 Owston Road  
Carcroft Doncaster, DN6 8DA  
United Kingdom

