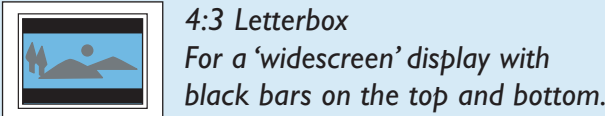


Quick reference

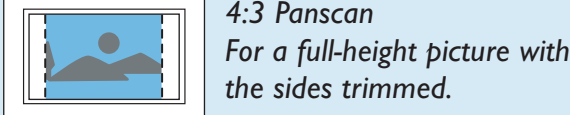
Refer to this information during initial setup.

TV Format

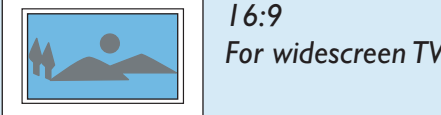
Choosing TV format during first installation sets the default display when playing DVD videos.



4:3 Letterbox
For a 'widescreen' display with black bars on the top and bottom.



4:3 Panscan
For a full-height picture with the sides trimmed.



16:9
For widescreen TV.

Recording Mode Chart

The recording mode defines the picture quality of recordings and the maximum recording time for a disc.

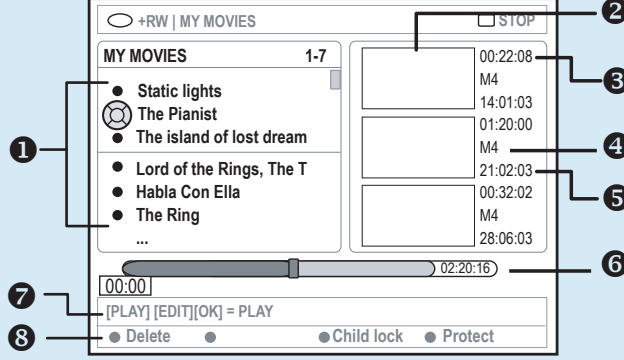
Record Mode	Picture Quality	Record Time
M1	High quality (HQ)	1 hour
M2	DVD quality-Standard Play (SP)	2 hours
M2x	DVD quality-Standard Play Plus (SP+)	2.5 hours
M3	S-VHS quality-Long Play (LP)	3 hours
M4	VHS quality-Extended Play (EP)	4 hours
M6	VHS quality-Super Long Play (SLP)	6 hours
M8	VHS quality-Super Extended Play (SEP)	8 hours

For best performance, use Philips DVD+R or DVD+RW discs



Index Picture Screen

Appears automatically when you insert a pre-recorded DVD+R(W) disc.



- 1 Name of recording (or channel number and time)
- 2 Title's index picture
- 3 Length of recording
- 4 Recording mode
- 5 Date of the recording
- 6 Disc bar (represents the recordings, erased titles, protected title and blank space at the end of the disc)
- 7 Support function guidance

Troubleshooting

For expanded list of solutions, refer to the user manual.

IS THE TV ON? appears on the display panel

- The DVD Recorder will not operate until the installation is completed. Fully complete step 2 'Install' in this quick start guide or see 'Installing your DVD Recorder – Initial installation', in the user manual on page 24.

The remote control does not work

- Check the polarity of the batteries or change them.
- Point the remote control at the DVD Recorder, not the TV.

There is no picture

- Turn on the TV and make sure you are on the correct AV channel, displaying the DVD screen. For more help, see 'Connecting to TV – General' in the user manual.
- Make sure the antenna cable connection between the TV and DVD Recorder is secure.

Disc will not play

- Make sure the disc label is facing up in the tray.
- Make sure the child lock is not on. See 'Activating/deactivating the child lock' in the user manual on page 63.
- Make sure disc is not scratched or warped. Clean or replace disc.
- Before playing a DVD+R or DVD+RW on another DVD player, finalization is required. See page 49 in the user manual for finalization instructions.

DVD does not record

- The disc must be a DVD+R or DVD+RW. These are the only formats the recorder will accept. Make sure to choose the plus (+) not minus (-) R or RW format.
- Make sure the disc you are recording from is not copyright protected.
- Discs used in a PC will not play. Make sure you are using a blank, unformatted disc.



Need help?

User manual

Check the user manual that came with your DVD Recorder.

Online help: www.philips.com/support

Hotline: 1-888-PHILIPS (744-5477)

Call our specialists any time to make the most of your Philips DVD Recorder.



2004 © Koninklijke Philips Electronics N.V.
All rights reserved.
12NC 3139 246 15141
www.philips.com

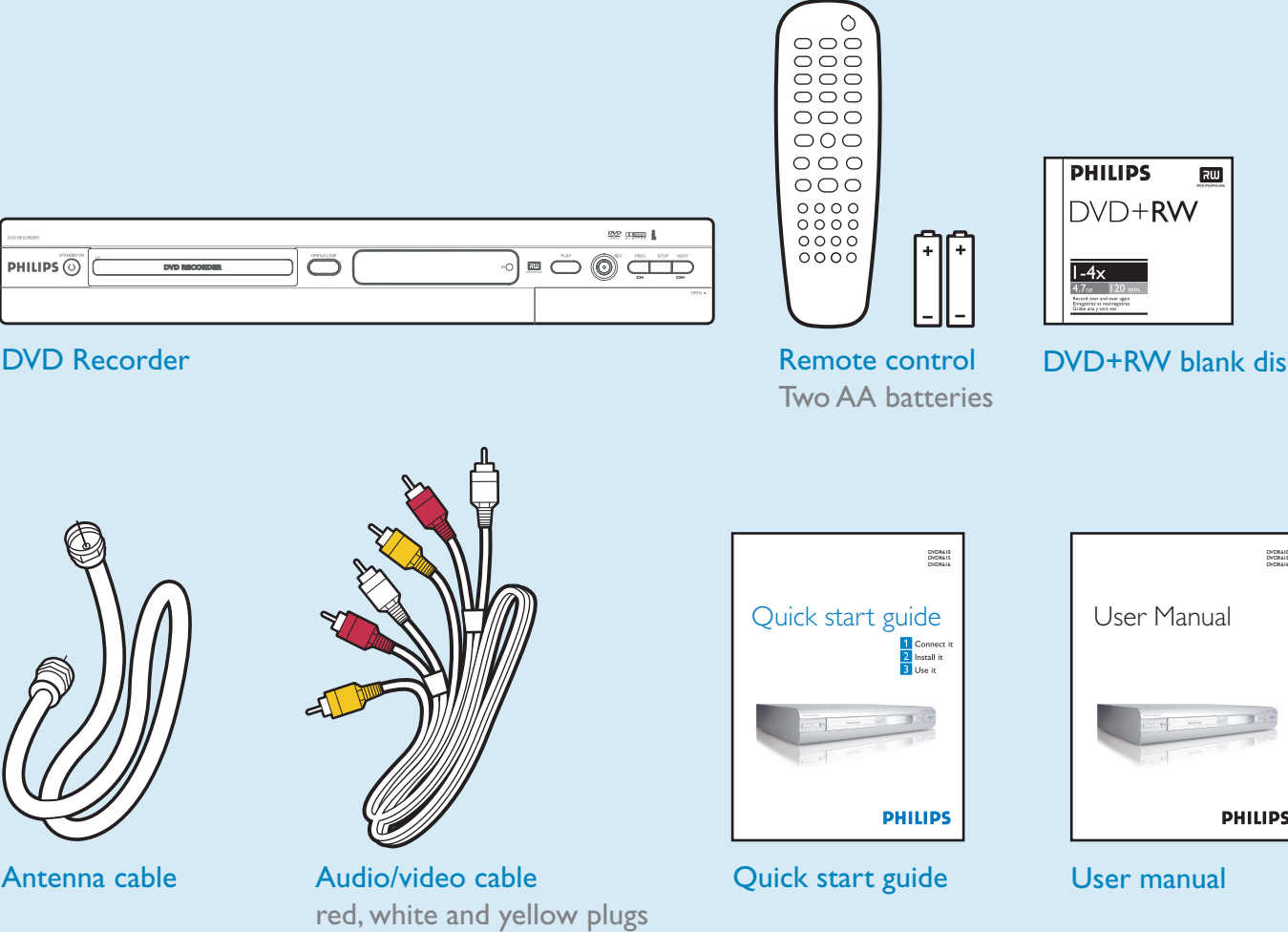
DVDR615/37

Quick start guide

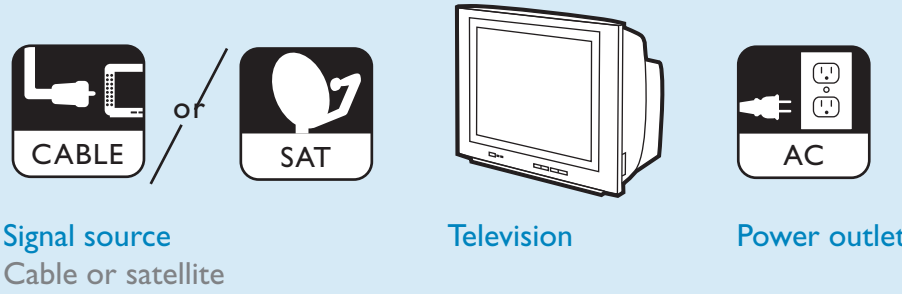
- 1 Connect
- 2 Install
- 3 Enjoy



What's in the box



What else you'll need



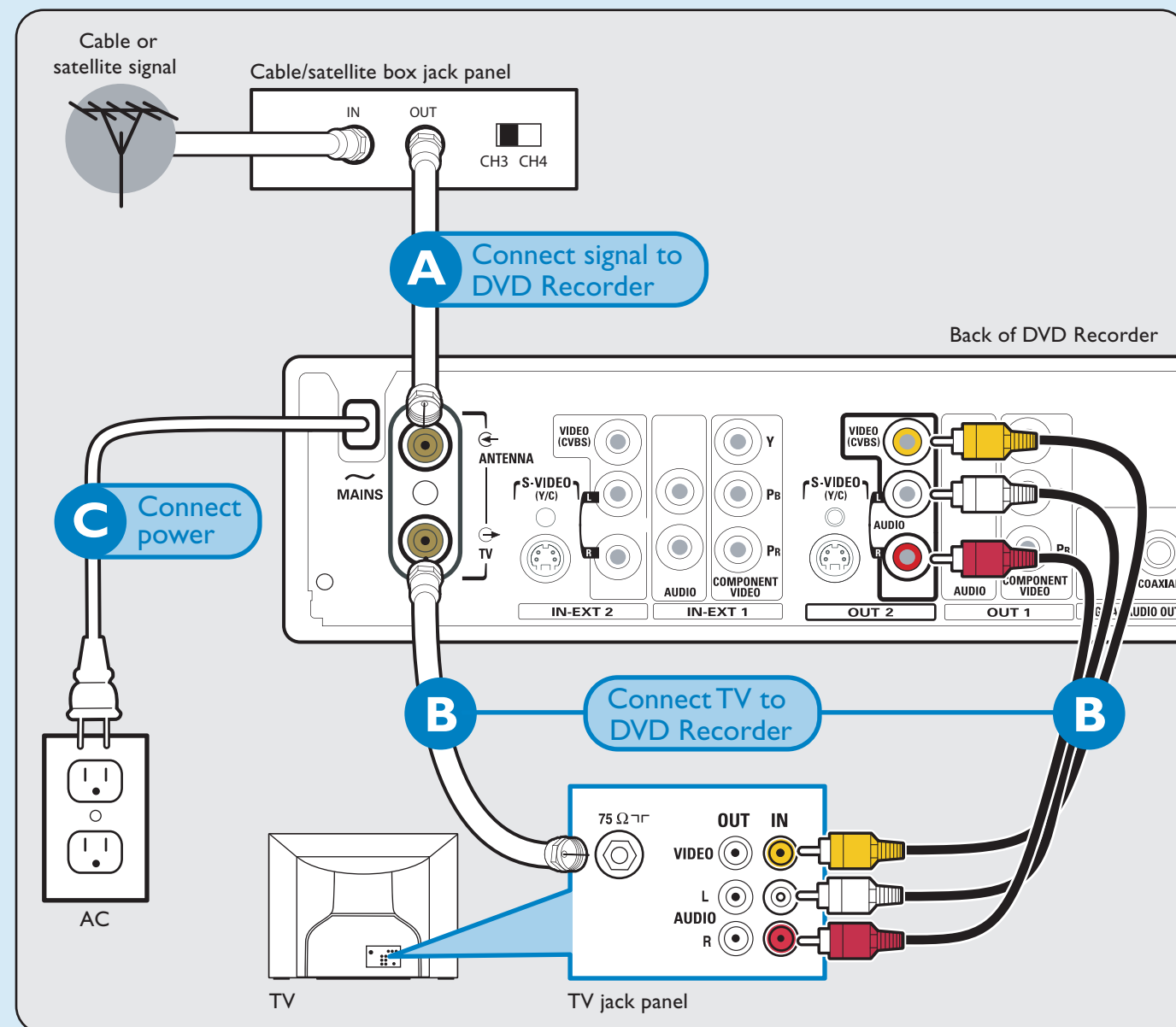
TIP

This quick start guide has been provided to assist you with initial setup. To get the most out of your new DVD Recorder, please take the time to explore the user manual.



1 Connect

Instructions are applicable when your TV is connected to a cable/satellite box



A Connect signal to DVD Recorder

Connect existing antenna cable from cable/satellite box (RF OUT or TO TV) to **ANTENNA** on the DVD Recorder. Set your cable/satellite box to Channel 3.

B Connect TV to DVD Recorder

Connect the *supplied* antenna cable from **TV** on the DVD Recorder to the back of your TV. Connect the *supplied* A/V cables from **OUT 2 VIDEO (CVBS)** and **AUDIO L/R** to Audio and Video In on your TV (composite).

C Connect power

Connect the power cable from the DVD Recorder to an AC power outlet.

TIP
For additional types of connections, see user manual pages 10-19.

2 Install

For successful installation, your cable/satellite box must be turned on.

A Insert batteries

Insert the batteries into the *supplied* remote control.

B Turn on DVD Recorder

Press **STANDBY-ON** on front of DVD Recorder.

C Turn on TV

Turn on your TV and set it to the correct video-in channel. The first installation menu, *Language and Country*, will appear.

D Conduct installation

Use the remote control to go through the menu.

- Select an item by pressing **▲** or **▼**
- Select item options by pressing **▶**
- Confirm with **◀** or **OK**

You will be asked to:

- Select your **Language** and **Country**
- Select your **TV Format**
See TV format under Quick reference section for help.
- Activate automatic **Channel Search**
May take a few minutes. Make sure cable/satellite box is turned on.
- Check **Date** and **Time**
- Read introductory dialog about YesDVD. Press **OK** to finish installation.

Installation is now complete. The DVD Recorder is set to display the first tuned TV channel. If 'no signal' message appears, use **▲** to locate the first tuned channel. The DVD Recorder is ready for use!

TIP
For more about installation, see user manual pages 24-29.

3 Enjoy

Playing a DVD video

A Insert disc and begin playback

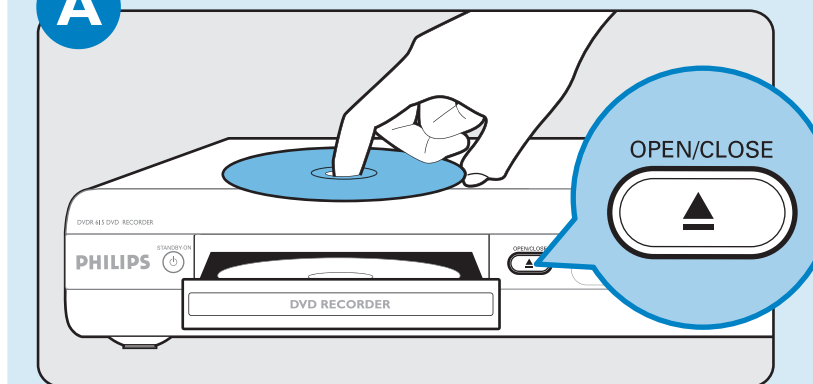


- Press **OPEN/CLOSE** on the DVD Recorder to open the disc tray.
- Insert a DVD and press **OPEN/CLOSE** to close the tray.
- When dialog box appears, select No by pressing **OK** button on remote and then press **PLAY ▶** to play disc.

TIP
See user manual pages 30-36 for additional playback information.

Recording a TV program *Manual recording*

A Insert disc

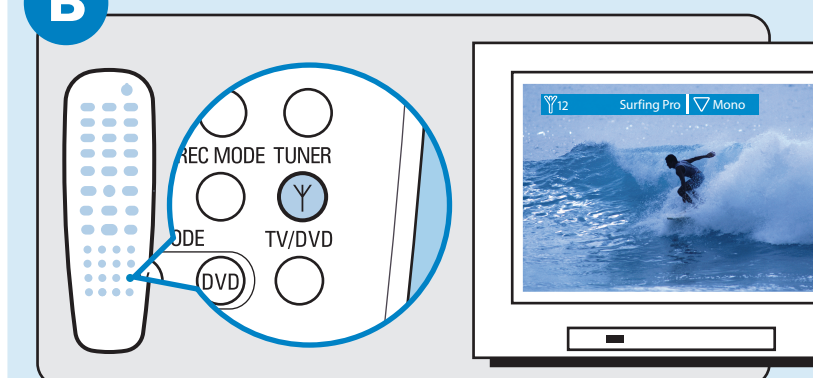


- Press **OPEN/CLOSE** on the DVD Recorder to open the disc tray.
- Insert *supplied* DVD+RW and press **OPEN/CLOSE** to close the tray.

TIP
This DVD recorder will only record on two formats: DVD+R and DVD+RW.

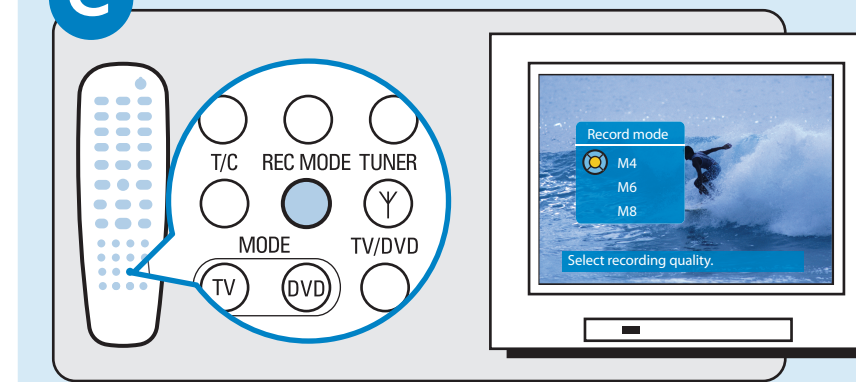


B Select channel



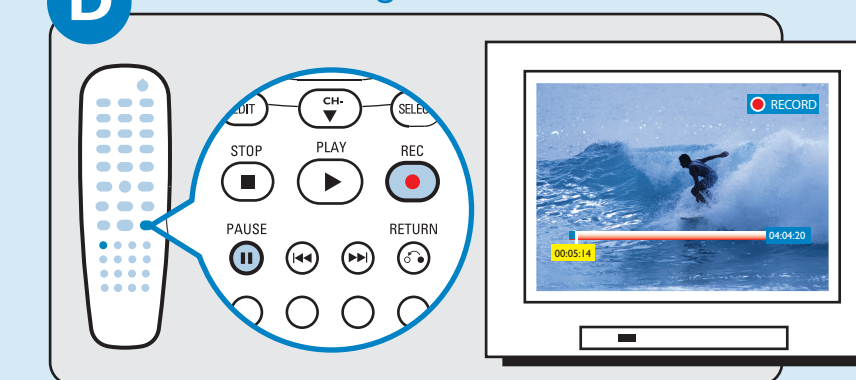
- Press **TUNER** on the remote control to see TV programs. If you are already viewing TV programs, go to the next step below.
- Press **▲▼** to select the program you wish to record.

C Select record quality



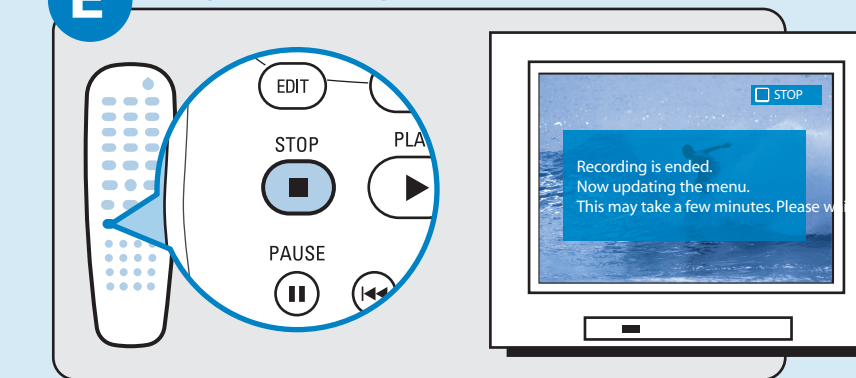
- Press **REC MODE**. A menu briefly appears on screen.
- Press **▲▼** to select the mode. See Recording Mode Chart in Quick reference section for help.

D Start recording



- Press **REC** on the remote control to start recording.
- During recording, you may press **PAUSE** to interrupt recording.
- To begin recording again, press **REC**.

E Stop recording



- To stop the recording, press **STOP**. Wait until onscreen message disappears to remove DVD+RW.

TIP
See user manual pages 37-52 for more information about recording.