



Thank you for choosing Philips.

## Need help fast?

Read your Quick Use Guide and/or Owner's Manual first for quick tips that make using your Philips product more enjoyable.

If you have read your instructions and still need assistance, you may access our online help at

[www.philips.com/usasupport](http://www.philips.com/usasupport)  
or call

**1-888-PHILIPS (744-5477)**  
while with your product.  
(and Model / Serial number)



Philips vous remercie de votre confiance.

## Besoin d'une aide rapide?

Les Guide d'utilisation rapide et Manuel de l'utilisateur regorgent d'astuces destinées à simplifier l'utilisation de votre produit Philips.

Toutefois, si vous ne parvenez pas à résoudre votre problème, vous pouvez accéder à notre aide en ligne à l'adresse

[www.philips.com/usasupport](http://www.philips.com/usasupport)  
ou formez le

**1-800-661-6162 (Francophone)**  
**1-888-PHILIPS (744-5477) (English speaking)**

Veillez à avoir votre produit à portée de main.  
(et model / serial nombre)



Gracias por escoger Philips

## Necesita ayuda inmediata?

Lea primero la Guía de uso rápido o el Manual del usuario, en donde encontrará consejos que le ayudarán a disfrutar plenamente de su producto Philips.

Si después de leerlo aún necesita ayuda, consulte nuestro servicio de asistencia en línea en

[www.philips.com/usasupport](http://www.philips.com/usasupport)  
o llame al teléfono

**1-888-PHILIPS (744-5477)**  
y tenga a mano el producto.  
(y número de model / serial)



# PHILIPS

## **Canada**

### **English:**

This digital apparatus does not exceed the Class B limits for radio noise emissions from digital apparatus as set out in the Radio Interference Regulations of the Canadian Department of Communications.

### **Français:**

Cet appareil numérique n'émet pas de bruits radioélectriques dépassant les limites applicables aux appareils numériques de Class B prescrites dans le Règlement sur le Brouillage Radioélectrique édicté par le Ministère des Communications du Canada.

## **CAUTION**

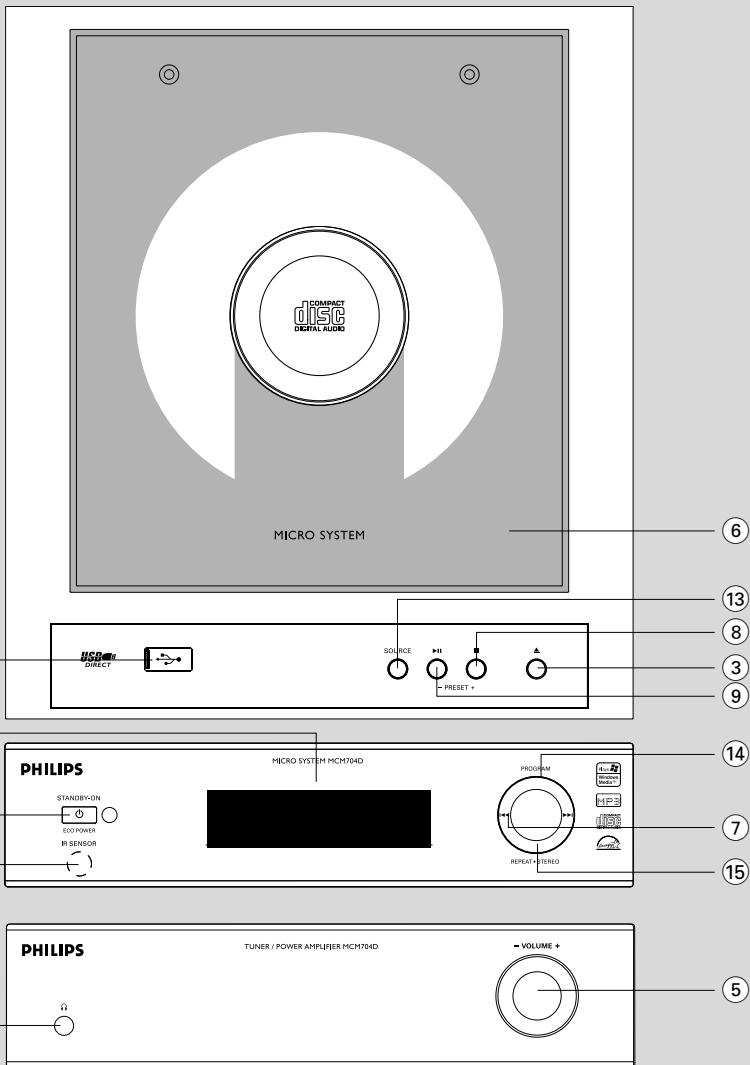
*Use of controls or adjustments or performance of procedures other than herein may result in hazardous radiation exposure or other unsafe operation.*

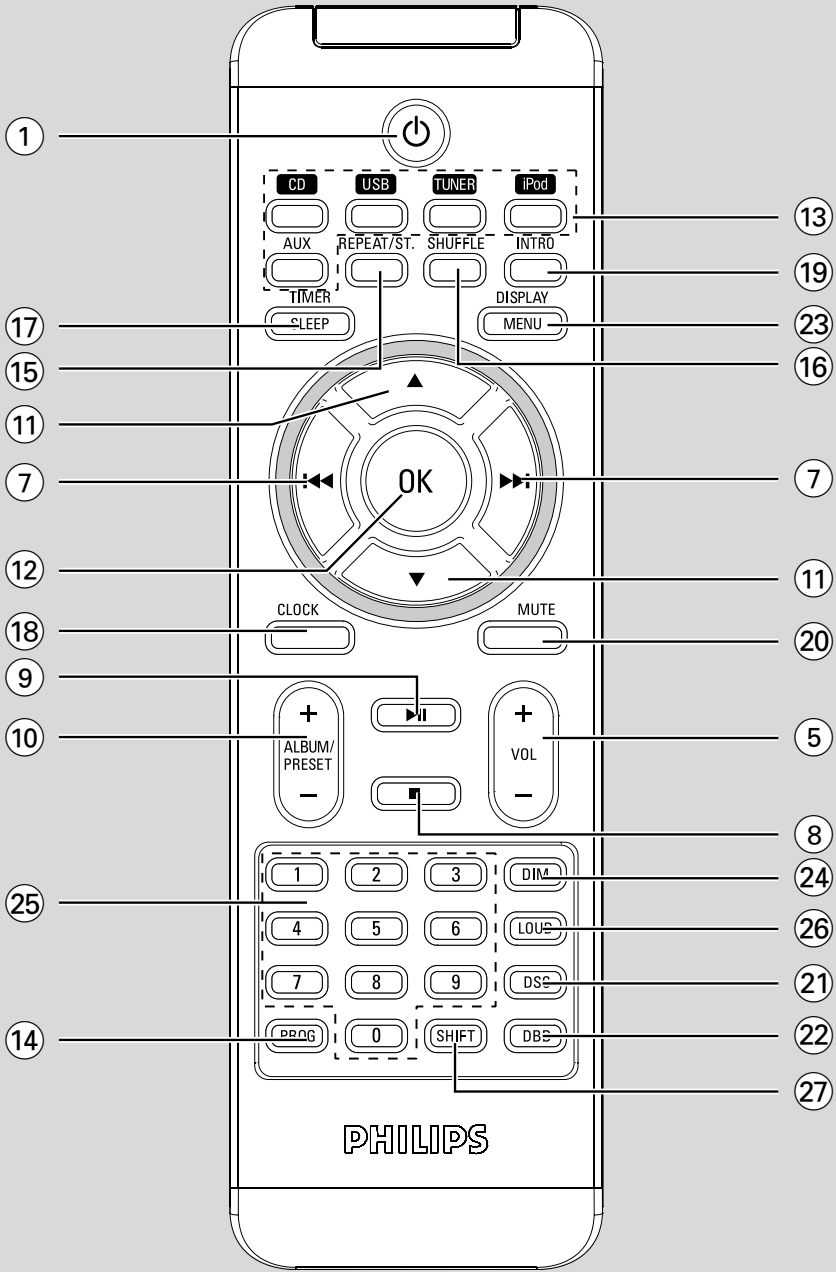
## **ATTENTION**

*L'utilisation des commandes ou réglages ou le non-respect des procédures ci-inclues peuvent se traduire par une exposition dangereuse à l'irradiation.*

## **ATENCIÓN**

*El uso de mando o ajustes o la ejecución de métodos que no sean los aquí descritos puede ocasionar peligro de exposición a radiación.*





PHILIPS

**Return your Product Registration Card or register online at  
www.philips.com/usasupport today to get the very most from your purchase.**

Registering your model with PHILIPS makes you eligible for all of the valuable benefits listed below, so don't miss out. Complete and return your Product Registration Card at once, or register online at [www.philips.com/usasupport](http://www.philips.com/usasupport) to ensure:

**\*Proof of Purchase**

Returning the enclosed card guarantees that your date of purchase will be on file, so no additional paperwork will be required from you to obtain warranty service.

**\*Product Safety Notification**

By registering your product, you'll receive notification - directly from the manufacturer - in the rare case of a product recall or safety defect.

**\*Additional Benefits**

Registering your product guarantees that you'll receive all of the privileges to which you're entitled, including special money-saving offers.

# PHILIPS

***Congratulations on your purchase, and welcome to the "family!"***

**Dear PHILIPS product owner:**

Thank you for your confidence in PHILIPS. You've selected one of the best-built, best-backed products available today. We'll do everything in our power to keep you happy with your purchase for many years to come.

As a member of the PHILIPS "family," you're entitled to protection by one of the most comprehensive warranties and outstanding service networks in the industry. What's more, your purchase guarantees you'll receive all the information and special offers for which you qualify, plus easy access to accessories from our convenient home shopping network.

Most importantly, you can count on our uncompromising commitment to your total satisfaction.

All of this is our way of saying welcome - and thanks for investing in a PHILIPS product.

**P.S. To get the most from your PHILIPS purchase, be sure to complete and return your Product Registration Card at once, or register online at:**

**[www.philips.com/usasupport](http://www.philips.com/usasupport)**

Know these **safety** symbols



**⚡** This "bolt of lightning" indicates uninsulated material within your unit may cause an electrical shock. For the safety of everyone in your household, please do not remove product covering.

**⚠** The "exclamation point" calls attention to features for which you should read the enclosed literature closely to prevent operating and maintenance problems.

**WARNING:** To reduce the risk of fire or electric shock, this apparatus should not be exposed to rain or moisture and objects filled with liquids, such as vases, should not be placed on this apparatus.

**CAUTION:** To prevent electric shock, match wide blade of plug to wide slot, fully insert.

**ATTENTION:** Pour éviter les choc électriques, introduire la lame la plus large de la fiche dans la borne correspondante de la prise et pousser jusqu'au fond.

**For Customer Use**

Enter below the Serial No. which is located on the rear of the cabinet. Retain this information for future reference.

Model No. \_\_\_\_\_  
Serial No. \_\_\_\_\_

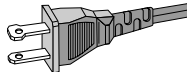
# PHILIPS

Visit our World Wide Web Site at <http://www.philips.com/usasupport>

# IMPORTANT SAFETY INSTRUCTIONS

1. **Read these instructions.**
2. **Keep these instructions.**
3. **Heed all warnings.**
4. **Follow all instructions.**
5. **Do not use this apparatus near water.**
6. **Clean only with dry cloth.**
7. **Do not block any ventilation openings. Install in accordance with the manufacturer's instructions.**
8. **Do not install near any heat sources** such as radiators, heat registers, stoves, or other apparatus (including amplifiers) that produce heat.


9. **Do not defeat the safety**



**AC Polarized Plug**

**purpose** of the polarized or grounding-type plug. A polarized plug has two blades with one wider than the other. A grounding type plug has two blades and a third grounding prong. The wide blade or the third prong are provided for your safety. If the provided plug does not fit into your outlet, consult an electrician for replacement of the obsolete outlet.

10. **Protect the power cord** from being walked on or pinched, particularly at plugs, convenience receptacles, and the point where they exit from the apparatus.
11. **Only use attachments/accessories** specified by the manufacturer:

12.  **Use only with the cart**, stand, tripod, bracket, or table specified by the manufacturer or sold with the apparatus. When a cart is used, use caution when moving the cart /apparatus combination to avoid injury from tip-over.

13. **Unplug this apparatus** during lightning storms or when unused for long periods of time.
14. **Refer all servicing** to qualified service personnel. Servicing is required when the apparatus has been damaged in any way, such as power-supply cord or plug is damaged, liquid has been spilled or objects have fallen into the apparatus, the apparatus has been exposed to rain or moisture, does not operate normally, or has been dropped.

15. **Battery usage CAUTION** – To prevent battery leakage which may result in bodily injury, property damage, or damage to the unit:

Install **all** batteries correctly, **+** and **-** as marked on the unit.


Do not mix batteries (**old** and **new** or **carbon** and **alkaline**, etc.).

Remove batteries when the unit is not used for a long time.

16. **Apparatus shall not be exposed to dripping or splashing.**
17. **Do not place any sources of danger on the apparatus** (e.g. liquid filled objects, lighted candles).
18. This product may contain lead and mercury. Disposal of these materials may be regulated due to environment considerations.

**For disposal or recycling information, please contact your local authorities or the Electronic Industries Alliance: [www.eiae.org](http://www.eiae.org).**

**EL 6475-S004: 03/12**

**Class II equipment symbol**   
This symbol indicates that the unit has a double insulation system

English ..... 8

Français ..... 34

Español ..... 68

English

Français

Español

---

## General Information

Environmental Information .....	9
Supplied accessories .....	9
Safety information .....	9
Hearing Safety .....	10

---

## Preparations

Rear connections .....	11 ~ 12
Before using the remote control .....	13
Replacing battery (lithium CR2025) into the remote control .....	13

---

## Controls

Controls on the system and remote control .....	14~15
---	-------

---

## Basic Functions

Switching the system on .....	16
Switching the system to Eco Power Standby mode .....	16
Power Saving Automatic Standby .....	16
Adjusting volume and sound .....	16~17
Dimming the display screen .....	17

---

## CD/MP3-CD Operation

Loading a disc .....	18
Basic playback controls .....	18~19
Playing an MP3 disc .....	19
Different play modes: SHUFFLE and REPEAT ... ..	20
Programming track numbers .....	20
Erasing the programme .....	20

---

## Radio Reception

Tuning to radio stations .....	21
Programming radio stations .....	21~22
Automatic programming	
Manual programming	
Tuning to preset radio stations .....	22

---

## iPod Dock

Compatible iPod players .....	23
Selecting the correct dock adaptor .....	23
Setup .....	23
Playing an iPod portable player .....	24
Charging iPod battery using the dock .....	24

---

## External Sources

Using a non-USB device .....	25
Using a USB mass storage device .....	25~26

---

## Clock/Timer

Setting the clock .....	27
Viewing the clock .....	27
Setting the timer .....	27
Activating and deactivating SLEEP .....	27

---

## Specifications

---

## Maintenance

---

## Troubleshooting



## Environmental Information

All unnecessary packaging has been omitted. We have tried to make the packaging easy to separate into three materials: cardboard (box), polystyrene foam (buffer) and polyethylene (bags, protective foam sheet).

Your system consists of materials which can be recycled and reused if disassembled by a specialized company. Please observe the local regulations regarding the disposal of packaging materials, exhausted batteries and old equipment.

## Supplied accessories

- 2 loudspeaker boxes
- remote control (with battery)
- FM antenna
- AM antenna
- control cable
- Docking kit
  - 1 dock used for Apple iPod
  - Dock adaptors (8 adaptors for different iPod types)

## Safety Information

- Before operating the system, check that the operating voltage indicated on the typeplate of your system is identical with the voltage of your local power supply. If not, please consult your dealer.
- Place the system on a flat, hard and stable surface.
- Place the system in a location with adequate ventilation to prevent internal heat build-up in your system. Allow at least 10 cm (4 inches) clearance from the rear and the top of the unit and 5 cm (2 inches) from each side.
- The ventilation should not be impeded by covering the ventilation openings with items, such as newspapers, table-cloths, curtains, etc.
- Do not expose the system, batteries or discs to excessive moisture, rain, sand or heat sources caused by heating equipment or direct sunlight.
- No naked flame sources, such as lighted candles, should be placed on the apparatus.
- No objects filled with liquids, such as vases, shall be placed on the apparatus.
- Install this unit near the AC outlet and where the AC power plug can be reached easily.
- The apparatus shall not be exposed to dripping or splashing.
- If the system is brought directly from a cold to a warm location, or is placed in a very damp room, moisture may condense on the lens of the disc unit inside the system. Should this occur, the CD player would not operate normally. Leave the power on for about one hour with no disc in the system until normal playback is possible.
- The mechanical parts of the set contain self-lubricating bearings and must not be oiled or lubricated.
- **When the system is switched to Standby mode, it is still consuming some power. To disconnect the system from the power supply completely, remove the AC power plug from the wall socket.**

# General Information

---

## Hearing Safety

### Listen at a moderate volume.

- Using headphones at a high volume can impair your hearing. This product can produce sounds in decibel ranges that may cause hearing loss for a normal person, even for exposure less than a minute. The higher decibel ranges are offered for those that may have already experienced some hearing loss.
- Sound can be deceiving. Over time your hearing "comfort level" adapts to higher volumes of sound. So after prolonged listening, what sounds "normal" can actually be loud and harmful to your hearing. To guard against this, set your volume to a safe level before your hearing adapts and leave it there.

### To establish a safe volume level:

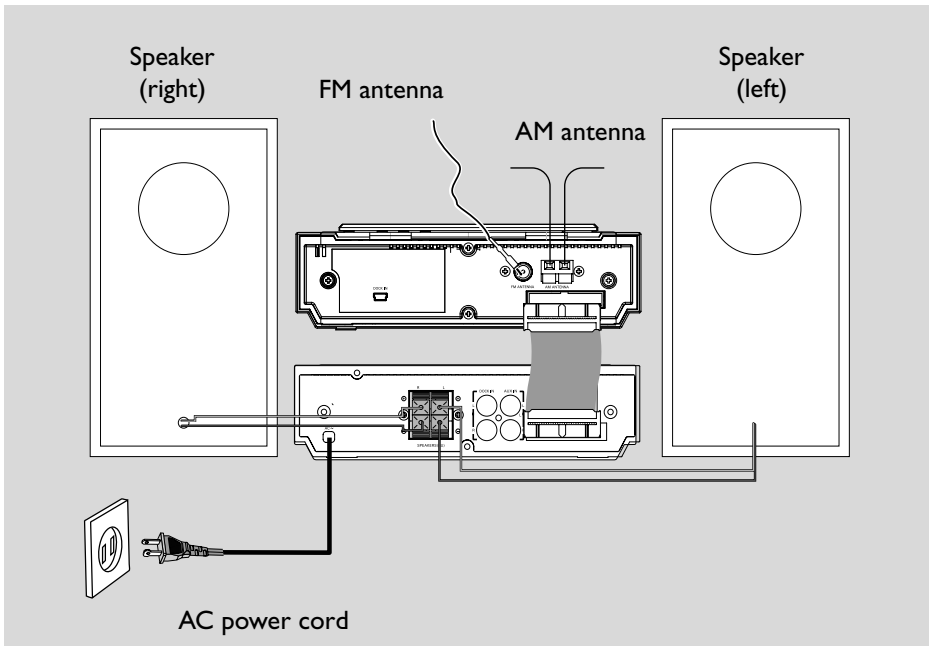
- Set your volume control at a low setting.
- Slowly increase the sound until you can hear it comfortably and clearly, without distortion.

### Listen for reasonable periods of time:

- Prolonged exposure to sound, even at normally "safe" levels, can also cause hearing loss.
- Be sure to use your equipment reasonably and take appropriate breaks.

### Be sure to observe the following guidelines when using your headphones.

- Listen at reasonable volumes for reasonable periods of time.
- Be careful not to adjust the volume as your hearing adapts.
- Do not turn up the volume so high that you can't hear what's around you.
- You should use caution or temporarily discontinue use in potentially hazardous situations.
- Do not use headphones while operating a motorized vehicle, cycling, skateboarding, etc.; it may create a traffic hazard and is illegal in many areas.



## Rear connections

The type plate is located at the rear of the system.

### A Power

Before connecting the AC power cord to the wall outlet, ensure that all other connections have been made.

#### Warning!

- For optimal performance, use only the original power cable.
- Never make or change any connections with the power switched on.

To avoid overheating of the system, a safety circuit has been built in. Therefore, your system may switch to Standby mode automatically under extreme conditions. If this happens, let the system cool down before reusing it (not available for all versions).

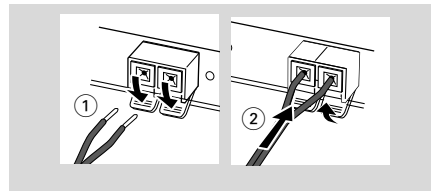
### B Connecting the control cable

Connect the serial port marked “**CONTROL CABLE**” at the rear of the CD player to the same port at the rear of the power amplifier with the supplied flat control cable.

### C Connecting antennas

Connect the supplied AM antenna and FM antenna to the respective terminals. Adjust the position of the antenna for optimal reception.

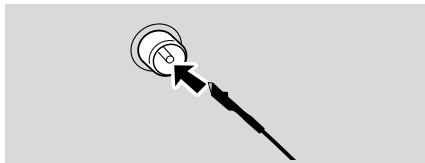
#### AM Indoor Antenna



- Position the antenna as far as possible from a TV, VCR or other radiation source.

# Preparations

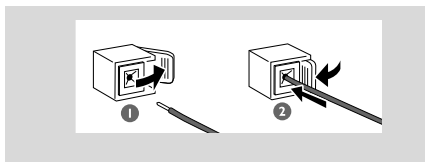
## FM Indoor Antenna



- For better FM stereo reception, connect an outdoor FM antenna to the FM AERIAL (FM ANTENNA) terminal.

## C Speakers Connection

Connect the speaker wires to the SPEAKERS (8Ω) terminals, right speaker to "R" and left speaker to "L", the wire marked in red to "+" and the wire marked in black to "-".



- Fully insert the stripped portion of the speaker wire into the terminal as shown.

### Notes:

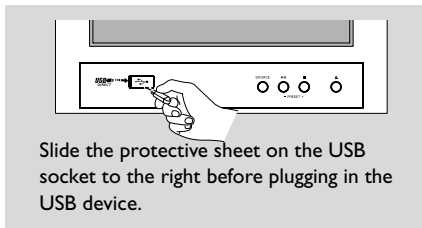
- For optimal sound performance, use the supplied speakers.
- Do not connect more than one speaker to any one pair of +/- speaker terminals.
- Do not connect speakers with an impedance lower than the speakers supplied. Please refer to the SPECIFICATIONS section of this manual.


## D Optional connection

The optional equipment and connecting cords are not supplied. Refer to the operating instructions of the connected equipment for details.

## Connecting a USB device or memory card


By connecting a USB mass storage device (including USB flash memory, USB flash players or memory cards) to the Hi-Fi system, you can enjoy the device's stored music through the powerful speakers of Hi-Fi system.



- Insert the USB device's USB plug into the  socket on the set.


OR

### for the devices with USB cables:

- 1 Insert one plug of the USB cable (not supplied) to the  socket on the set.
- 2 Insert the other plug of the USB cable to the USB output terminal of the USB device.

OR

### for the memory card:

- 1 Insert the memory card into a card reader (not supplied).
- 2 Use a USB cable (not supplied) to connect the card reader into the  socket on the set.

## Connecting other equipment to your system

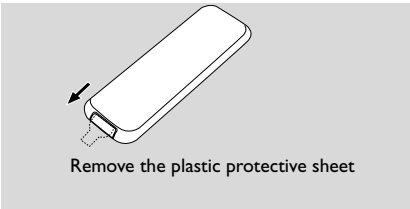
- Connect the audio left and right OUT terminals of a TV, VCR, Laser Disc player, DVD player or CD Recorder to the AUX IN terminals.

### Note:

- If you are connecting equipment with a mono output (a single audio out terminal), connect it to the AUX IN left terminal. Alternatively, you can use a "single to double" cinch cable (the output sound still remain mono).

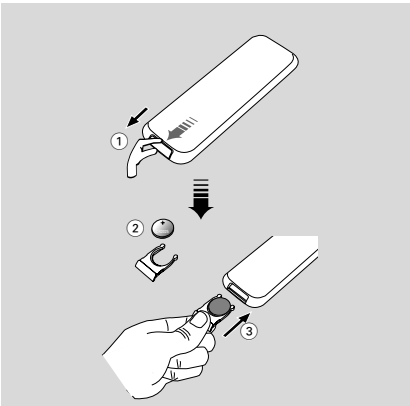
## Before using the remote control

- 1 Pull out the plastic protective sheet.
- 2 Select the source you wish to control by pressing one of the source select keys on the remote control (for example DISC, FM).
- 3 Then select the desired function (for example ► || , ◀◀, ▶▶).



## Replacing battery (lithium CR2025) into the remote control

- 1 Press the slot on the battery compartment.
- 2 Pull out the battery compartment.
- 3 Replace a new battery and fully insert the battery compartment back to the original position.



### **CAUTION!**

**Batteries contain chemical substances, so they should be disposed of properly.**

## Controls on the system and remote control

- ① **STANDBY-ON/ECO POWER** 
  - switches the system on or to Eco Power standby/normal standby with clock display.
- ② **Display screen**
  - shows the status of the system.
- ③ **▲**
  - opens/closes the CD door.
- ④ **IR SENSOR**
  - remote sensor
- ⑤ **VOLUME -/+ (VOL +/-)**
  - adjusts the volume level.
  - adjusts the hours and minutes for the clock/timer function.
- ⑥ **CD Door**
- ⑦    
  - for CD/MP3-CD/WMA/USB/iPod
    - fast searches back and forward within a track/disc (press and hold).
    - .....skips to the beginning of a current/previous/subsequent track.
- ⑧ **■/PRESET +**
  - stops disc playback or erases a disc program.
  - (for TUNER; on the system only) selects a preset radio station.
- ⑨ **▶ II/PRESET -**
  - starts or interrupts playback.
  - (for TUNER; on the system only) selects a preset radio station.
- ⑩ **ALBUM/PRESET +/-**
  - for MP3-CD/WMA/USB skips to the beginning of a current/previous/subsequent album.
  - for TUNER (on the system only) selects a preset radio station.
- ⑪ **▲ / ▼**
  - selects an item in a menu (for iPod menu operation only).
- ⑫ **OK**
  - confirms a selection (for iPod menu operation only).
- ⑬ **SOURCE**
  - selects the respective sound source for CD/USB/TUNER/iPod/AUX.
- ⑭ **PROGRAM (PROG)**
  - for CD/MP3/USB programs tracks.
  - for TUNER ..... programs radio stations.
- ⑮ **REPEAT/STEREO (REPEAT/ST.)**
  - for CD/MP3/WMA/USB selects a repeat playback mode.
  - for TUNER ..... sets stereo or mono sound mode.
- ⑯ **SHUFFLE**
  - plays disc tracks randomly.
- ⑰ **SLEEP/TIMER**
  - sets the timer function.
  - selects the sleeper time.
- ⑱ **CLOCK**
  - sets the clock function.
- ⑲ **INTRO**
  - for CD/MP3/WMA/USB starts scanning of all tracks.
- ⑳ **MUTE**
  - interrupts and resumes sound production.
- ㉑ **DSC (Digital Sound Control)**
  - selects sound characteristics: POP/JAZZ/CLASSIC/ROCK/FLAT.
- ㉒ **DBB (Dynamic Bass Boost)**
  - enhances the bass.
- ㉓ **DISPLAY/MENU**
  - selects different disc information display modes during playback.
  - is equivalent to the MENU button on your iPod player.
- ㉔ **DIM**
  - selects different levels of brightness for the display screen.
- ㉕ **Numerical Keypad (0~9)**
  - (for CD/MP3) selects a track directly.
- ㉖ **LOUD**
  - enables or disables automatic loudness adjustment.

⑳ **SHIFT**

- inputs a number larger than 10 (used together with the Numerical Keypad).

㉑ 

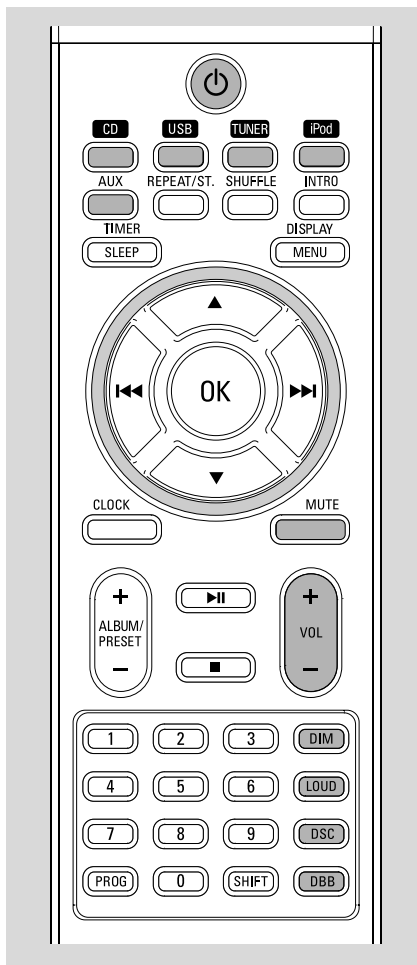
- connects a headphone.

㉒ **USB DIRECT** 

- jack for the external USB mass storage device.

**Notes for remote control:**



- **First select the source you wish to control by pressing one of the source select keys on the remote control (for example CD, TUNER).**
- **Then select the desired function (for example ► II, ◀◀, ▶▶).**



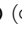

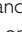
### Important!

**Before you operate the system, complete the preparation procedures.**

### Switching the system on

- Press **STANDBY-ON/ECO POWER**  (or  on the remote).  
→ The system will switch to the last selected source.
- Press **SOURCE** on the top of the system or **CD, USB, TUNER, iPod** or **AUX** on the remote control.  
→ The system will switch to the selected source.


### Switching the system to Eco Power Standby mode

- Press **STANDBY-ON/ECO POWER**  (or  on the remote).  
→ The backlight for clock display is dim in standby.  
→ The ECO POWER LED will be lighted.
- To view clock time in standby mode, press and hold **STANDBY-ON/ECO POWER**  on the front panel for more than 3 seconds or more.  
→ The system enters the standby mode with clock display.
- The volume level (up to a maximum volume level of 12), interactive sound settings, last selected mode (ECO Power Standby or normal standby), source and tuner presets will be retained in the player's memory.


### Power Saving Automatic Standby

As a power-saving feature, the system automatically switches to Eco Power/ Standby 15 minutes after a CD has reached the end and no control is operated.

### Adjusting volume and sound

- 1 Turn the **VOLUME +/-** knob or press **VOL +/-** on the remote to decrease or increase the volume.  
→ Display shows the volume level VOL and a number from MIN 01, 02, ...30 MAX.
- 2 Press **DSC** repeatedly to select the desired sound effect: **POP/JAZZ/CLASSIC/ROCK/FLAT**.
- 3 Press **DBB** to switch bass enhancement on or off.  
→  appears when enabled and disappears when disabled.
- 4 Press **MUTE** on the remote control to interrupt sound reproduction instantly.  
→ Playback will continue without sound and **MUTE** will flash on the display.



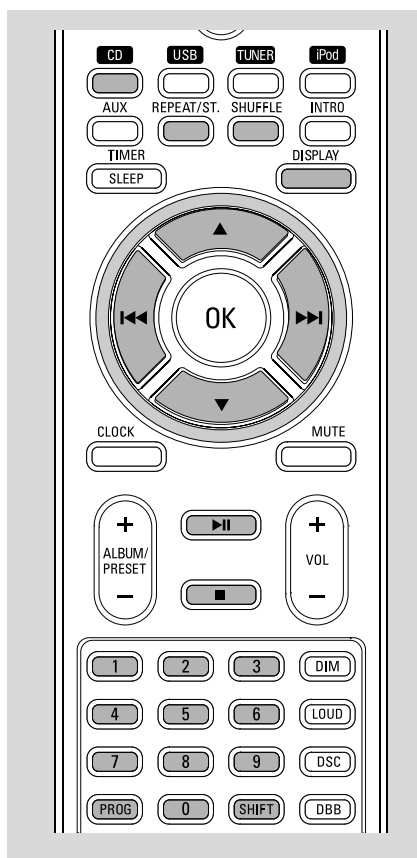
- Press **LOUD** on the remote to enable or disable LOUDNESS feature.  
→  icon appears/disappears after this feature is enabled/disabled.
- To activate sound reproduction you can:
  - press **MUTE** again;
  - adjust the volume controls;
  - change source.

---

## Dimming the display screen

- Press **DIM** repeatedly to select different levels of brightness for the display screen.

# CD/MP3-CD Operation



## Important!

The lens of the CD player should never be touched.

## Loading a disc

This CD player plays Audio Discs including CD Recordables, CD-Rewritables and MP3 CD.

- CD-ROM, CD-I, CDV,VCD, DVD or computer CDs, however, are not possible.
- ① Press **SOURCE** on the top of the system to select CD or press **CD** on the remote.
- ② Press **▲** to open the CD compartment.  
→ **OPEN** is displayed when the compartment cover slides up.

- ③ Insert a disc with the printed side facing up. Press **▲** again to close the compartment.  
→ **CLOSE** is displayed followed by **READ DISC** as the CD player scans the contents of a disc, and then playback starts automatically.

## Basic playback controls

### To play a disc

- Press **▶ ||** to start playback.  
→ The current track number and elapsed playing time of the track are displayed during disc playback.

### To select a different track

- Press the control knob on the front panel to the left or right (corresponding to **◀◀▶▶▶▶**) or press **◀◀/▶▶▶▶** on the remote once or repeatedly until the desired track number appears in the display.
- You can also use the **Numerical Keypad (0~9)** on the remote to select a track directly.
- To input a number larger than 10, press **SHIFT** on the remote once or more to select the first digit you want and then use the **Numerical Keypad (0~9)** to input the second digit.
- If you have selected a track number shortly after loading a disc or in the PAUSE position, you will need to press **▶ ||** to start playback.

## Text display during playback

### In CD mode

- Press **DISPLAY/MENU** on the remote control repeatedly to see the following information.  
→ Track number and elapsed playback time of current track.  
→ Track number and remaining playback time of current track.  
→ Track number and total remaining playback time.

### In MP3-CD mode

- Press **DISPLAY/MENU** on the remote control to display the ID-3 information if available.

## To find a passage within a track

- 1 Press and hold the control knob on the front panel to the left or right (corresponding to **⏮** or **⏭**) or press **⏮** or **⏭** on the remote.
- 2 When you recognize the passage you want, release the control knob (**⏮** or **⏭** on the remote).  
→ Normal playback continues.

## To stop playback

- Press **■**.

## To interrupt playback

- Press **▶ ||** during playback.  
→ The display freezes and the elapsed playing time flashes when playback is interrupted.  
→ To resume, press **▶ ||** again.

### Notes:

*CD play will also stop when;*

- the CD door is opened.
- the disc has reached the end.
- you select another source: **TUNER**, **USB**, **iPod** or **AUX**.
- you select **standby**.
- the set **auto off time** expires.

## To scan all tracks in a disc

- Press **INTRO** on the remote to play the first 10 seconds of each track in the whole disc one by one.  
→ **INTRO** appears on the display.  
→ The playback will start from the first track of the current disc.

## To stop scanning

- Press **INTRO** on the remote again until **INTRO** disappears.

## Playing an MP3 disc

- 1 Load an MP3 disc.  
→ The disc reading time may exceed 10 seconds due to the large number of songs compiled into one disc.
- 2 Press **ALBUM/PRESET +/-** on the remote to select a desired album.
- 3 Press the control knob on the front panel to the left or right (corresponding to **⏮** or **⏭**) or press **⏮** or **⏭** on the remote to select a desired track.  
→ The album number will change accordingly as you reach the first track of an album by pressing **⏮** or the last track of an album by pressing **⏭**.
- 4 Press **▶ ||** to start playback.

## Supported MP3 disc formats:

- ISO9660, Joliet
- Maximum title number: 512 (depending on filename length)
- Maximum album number: 255
- Supported sampling frequencies: 32 kHz, 44.1kHz, 48 kHz
- Supported Bit-rates: 32~256 (kbps), variable bitrates

## Different play modes: SHUFFLE and REPEAT

You can select and change the various play modes before or during playback. The REPEAT modes can also be combined with PROGRAM.

- 1 To select your play mode, press **SHUFFLE** or **REPEAT** on the remote control before or during playback until the display shows the desired function.
  - **SHUFFLE** appears if the shuffle playback is activated and disappears if deactivated.
  - If **REPEAT** appears, it indicates to play the current track repeatedly.
  - If **REPEAT ALL** is displayed, it indicates to play all tracks in the whole disc repeatedly.
  - For an MP3 CD, if both **REPEAT** and **TRK** flash on the display panel, it indicates to play the current track repeatedly.
  - For an MP3 CD, if both **REPEAT** and **ALB** flash on the display panel, it indicates to play the current album repeatedly.
- 2 Press **▶ ||** to start playback if in the STOP position.
  - If you have selected SHUFFLE, playback starts automatically.
- 3 To return to normal playback, press the respective **SHUFFLE** or **REPEAT** button until **REPEAT** or **SHUFFLE** is no longer displayed.
- You can also press **■** to cancel your play mode.

### Note:

– The Repeat and Shuffle functions cannot be activated simultaneously.

## Programming track numbers

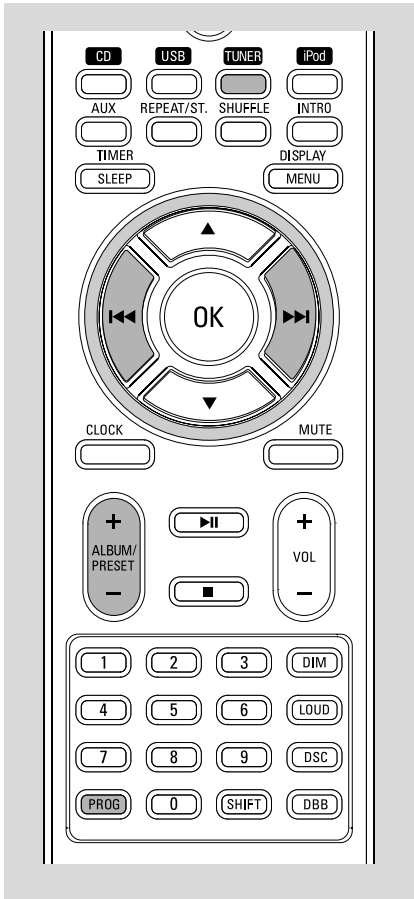
Program in the STOP position to select and store your disc tracks in the desired sequence. If you like, store any track more than once. Up to 20 tracks can be stored in the memory.

- 1 Press the control knob on the front panel of the system upward (corresponding to **PROGRAM**) or press **PROG** on the remote to enter the programming mode.
  - A track number flashes.
- 2 Press the control knob on the front panel of the system to the left or right (corresponding to **◀◀▶▶**) or press **◀◀▶▶** on the remote to select your desired track number.
- For an MP3 CD, Press **ALBUM/PRESET +/-** on the remote to select a desired album number.
- 3 Press the control knob on the front panel of the system upward (corresponding to **PROGRAM**) or press **PROG** on the remote to confirm the track number to be stored.
  - **P-\*** displays, in which \* denotes the next program number to be stored.
- 4 Repeat steps 2-3 to select and store all desired tracks.
  - Playback starts automatically from the first track programmed if you attempt to program more than 20 tracks.
- 5 To start playback of your disc program, press **▶ ||** directly.

## Erasing the program

You can erase the program by:

- pressing the control knob on the front panel of the system upward (corresponding to **PROGRAM**) or press **PROG** on the remote again;
- pressing **■** once in the STOP mode;
- pressing **■** twice during playback;
  - **PROG** disappears.
- opening the CD compartment;



## Tuning to radio stations

- 1 Press **SOURCE** on the top of the system or **TUNER** on the remote to select TUNER.
- 2 Press **SOURCE** or **TUNER** to select the desired waveband: FM or AM.
- 3 Press and hold the control knob on the front panel of the system to the left or right (corresponding to **◀◀/▶▶**) or **◀◀/▶▶** on the remote.  
→ The radio automatically tunes to a station with sufficient reception. Display indication during automatic tuning: **SEARCH**.
- 4 Repeat step 2 if necessary until you find the desired station.

- To tune to a weak station, press the control knob on the front panel of the system to the left or right (corresponding to **◀◀/▶▶**) or **◀◀/▶▶** on the remote briefly and repeatedly until you have found optimal reception.

## Programming radio stations

You can store up to a total of 40 radio stations in the memory.

### Automatic programming

Automatic programming will start from preset 1 and stop at the last programmed station. All the former programmed radio stations will be overridden.

- 1 Press **PRESET +/-** on the top of the system or **ALBUM/PRESET +/-** on the remote to select the preset number where programming should start.

**Note:**

– If no preset number is selected, default is preset (1) and all your presets will be overridden.

- 2 Press and hold the control knob on the front panel upward (corresponding to **PROGRAM**) or **PROG** on the remote for more than 2 seconds to activate programming.  
→ **ALTD** is displayed and available stations are programmed in order of waveband reception strength: AM followed by FM. The last preset automatically stored will then be played.

### Manual programming

- 1 Tune to your desired station (see "Tuning to radio stations").
- 2 Press the control knob on the front panel upward (corresponding to **PROGRAM**) or **PROG** on the remote to activate programming.
- 3 Press **PRESET +/-** on the top of the system or **ALBUM/PRESET +/-** on the remote to allocate a number from 1 to 40 to this station.
- 4 Press the control knob on the front panel upward (corresponding to **PROGRAM**) or **PROG** on the remote again to confirm the setting.  
→ The preset number and the frequency of the preset station are shown.

# Radio Reception

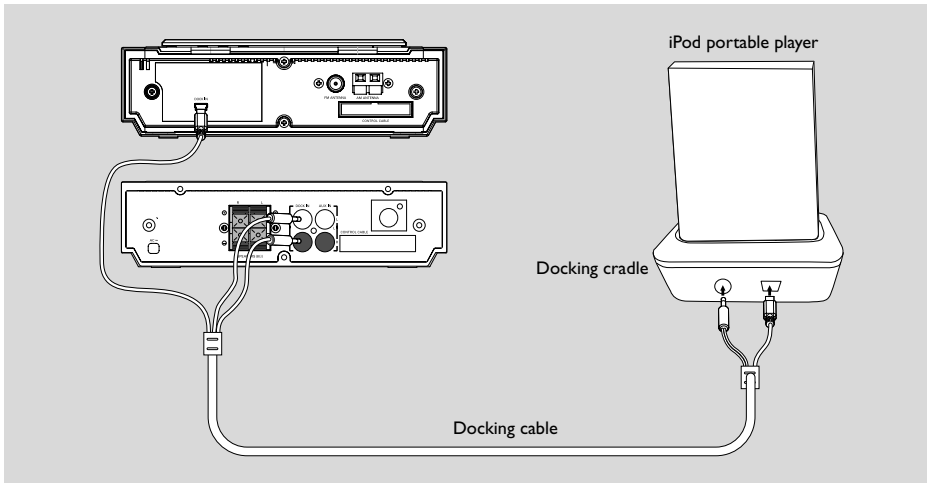
---

- 5 Repeat the above four steps to store other stations.
- You can override a preset station by storing another frequency in its place.

---

## Tuning to preset radio stations

- Press **PRESET +/-** on the top of the system or **ALBUM/PRESET +/-** on the remote until the desired preset station is displayed.
- You can also use the **Numerical Keypad (0~9)** to input a number directly and tune to the station associated with this number:
- To input a number larger than 10, press **SHIFT** once or more to select the first digit you want and then use the **Numerical Keypad (0~9)** to input the second digit.



## IMPORTANT!

– Do not try to connect any other dock accessories to this system!

## Compatible iPod players

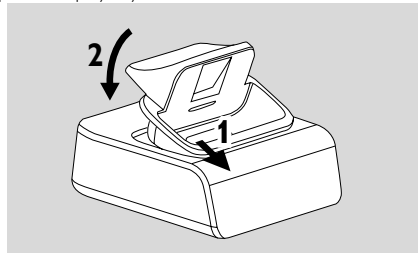
- Most Apple iPod models with 30-pin dock connectors as follows: 20GB, 40GB, 20/30GB Photo, 40/60GB Photo, 30GB Video, 60GB Video, 80GB Video, Mini, Nano and Nano 2nd generation.

## Selecting the correct dock adaptor

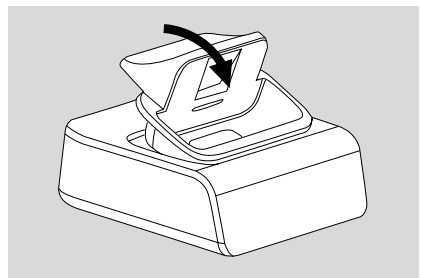
- 8 iPod dock adaptors of different type, as indicated at the back of the adaptor, are included to fit the following iPod:  
**20GB, 40GB, 20/30GB Photo, 40/60GB Photo, 30GB Video, 60GB Video, 80GB Video, Mini, Nano and Nano 2nd generation.**

## Setup

- 1 Connect the iPod docking cradle to the MCM704D Micro Hi-Fi System by using the docking cable.
- 2 Insert a dock adapter corresponding to the portable player you use.



- To connect with a different iPod portable player, pop up the corresponding dock adapter and replace with a new one of the matching type.



---

## Playing an iPod portable player

- 1 Correctly dock your iPod portable player in the cradle. Make sure the dock adaptor is compatible.
  - Make sure that you have powered on your iPod player before selecting iPod source.
    - On the display, "iPod" is displayed if iPod is connected.
- 2 Press **SOURCE** on the system repeatedly or **iPod** on the remote control to select iPod source.
- 3 Playback starts automatically. You can select available features (such as play/pause, skip track, fast forward/backward, menu selection) during playback.

---

## Charging iPod battery using the dock

- In CD, USB, TUNER or iPod mode, directly dock your iPod portable player on the cradle for charging.

**Note:**

– *For the purpose of SAVING POWER, recharging of your iPod or USB device is NOT SUPPORTED when the main set is in the STANDBY MODE.*



## Using a non-USB device

- 1 Connect the audio out terminals of the external equipment (TV, VCR, Laser Disc player; DVD player or CD Recorder) to the AUX terminals of your system.
- 2 Press **SOURCE** repeatedly (or **AUX** on the remote control) to select external equipment.

### Note:

- All the sound control features (DSC or DBB, for example) are available for selection.
- Refer to the operating instructions for the connected equipment for details.

## Using a USB mass storage device

By connecting a USB mass storage device to the Hi-Fi system, you can enjoy the device's stored music through the powerful speakers of Hi-Fi system.

### Playing a USB mass storage device Compatible USB mass storage devices

With the Hi-Fi system, you can use:

- USB flash memory (USB 2.0 or USB1.1)
- USB flash players (USB 2.0 or USB1.1)
- memory cards (requires an additional card reader to work with this Hi-Fi system)

### Notes:

- In some USB flash players (or memory devices), the stored contents are recorded using copyright protection technology. Such protected contents will be unplayable on any other devices (such as this Hi-Fi system).
- Compatibility of the USB connection on this product:
  - a) This product supports most USB Mass storage devices (MSD) that are compliant to the USB MSD standards.
    - i) Most common Mass storage class devices are flash drives, memory sticks, jump drives and etc.
    - ii) If you see a "Disc Drive" show up on your computer after you plugged the mass storage device into your computer, most likely it is MSD compliant and it will work with this product.

b) If your Mass storage device required a battery/power source. Please make sure you have a fresh battery in it or charge the USB device first and then plug it into the product again.

### – Supported Music type:

- a) This device only supports unprotected music with the following file extension:  
.mp3  
.wma
  - b) Music bought from on-line music stores are not supported because they are secured by Digital Rights Management protection (DRM).
  - c) File name extensions that end with the following are not supported:  
.wav; .m4a; .m4p; mp4; .aac and etc.
- No Direct connection can be made from Computer USB port to the product even you have either or both mp3 or wma files in your computer.

### Supported formats:

- USB or memory file format FAT12, FAT16, FAT32 (sector size: 512 bytes)
- MP3 bit rate (data rate): 32-320 Kbps and variable bit rate
- WMA v9 or earlier
- Directory nesting up to a maximum of 8 levels
- Number of albums/ folders: maximum 99
- Number of tracks/titles: maximum 400
- ID3 tag v2.0 or later
- File name in Unicode UTF8 (maximum length: 128 bytes)

### The system will not play or support the following:

- Empty albums: an empty album is an album that does not contain MP3/WMA files, and will not be shown in the display.
- Non-supported file formats are skipped. This means that e.g.: Word documents .doc or MP3 files with extension .dlf are ignored and will not be played.
- AAC, WAV, PCM audio files
- DRM protected WMA files
- WMA files in Lossless format

# External Sources

## How to transfer music files from PC to a USB mass storage device

By dragging and dropping music files, you can easily transfer your favorite music from PC to a USB mass storage device.

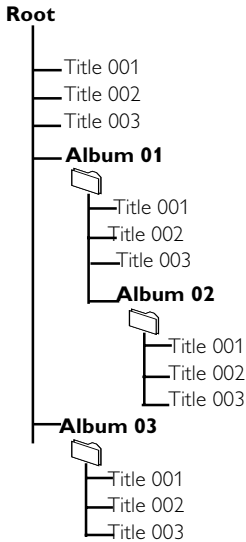
For the flash player, you can also use its music management software for the music transfer.

**However, those WMA files may be unplayable for compatibility reasons.**

## How to organize your MP3/WMA files on the USB mass storage device

This Hi-Fi system will browse the MP3/WMA files in the folders/sub-folders/titles order.

Example:



Organize your MP3/WMA files in different folders or subfolders as required.

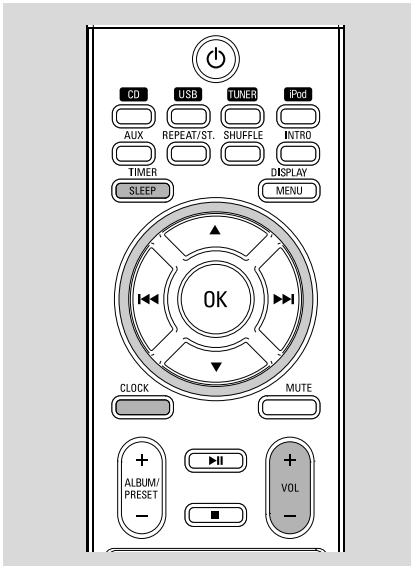
Notes:

- If you have not organized MP3/WMA files into any albums on your disc, an album "01" will be automatically assigned for all those files.
- Make sure that the file names of MP3 files end with `.mp3`, and the file names of WMA files end with `.wma`.
- For DRM protected WMA files, use Windows Media Player 10 (or later) for conversion. Visit [www.microsoft.com](http://www.microsoft.com) for details about Windows Media Player and WM DRM (Windows Media Digital Rights Management).

- 1 Check the USB device has been properly connected. (See Installation: Connecting an additional appliance).
- 2 Press **SOURCE (USB)** on the remote) once or more to select USB.
  - **NO USB** appears if no audio file is found in the USB device.
- 3 Play the USB's audio files as you do with the albums/tracks on a CD (See CD/MP3 Operations).

Notes:

- For compatibility reasons, the album/track information may differ from what it is displayed through flash players' music management software.
- File names or ID3 tags will be displayed as — if they are not in English.



## Setting the clock

- 1 In Standby mode, press and hold **CLOCK** on the remote until the time flashes on the display. → "SET CLOCK" is displayed briefly. Then, the hour digits flash on the display screen.
- 2 Turn **VOLUME +/-** clockwise or anticlockwise or press **VOL +/-** on the remote to set the hours.
- 3 Press **CLOCK** to confirm. → The minute digits flash on the display screen.
- 4 Turn **VOLUME +/-** clockwise or anticlockwise or press **VOL +/-** on the remote to set the minutes.
- 5 Press **CLOCK** again to confirm the clock setting.


### Notes:

- This system only supports 12-hour mode.
- The clock setting will be erased when the system is disconnected from the power supply.
- The system will exit clock setting mode if no button is pressed within 30 seconds.

## Viewing the clock

- Press **CLOCK** in the active mode. → The clock time is displayed.

## Setting the timer



- The system can be used as an alarm clock, whereby the CD, USB, TUNER, AUX is switched on at a set time. The clock time needs to be set first before the timer can be used.
  - During setting, if no button is pressed within 30 seconds, the system will exit timer setting mode automatically.
- 1 Press and hold **SLEEP/TIMER** on the remote control until the time flashes on the display. → "SET TIMER" is displayed briefly. Then, the hour digits flash on the display screen.
  - 2 Turn **VOLUME +/-** clockwise or anticlockwise or press **VOL +/-** on the remote to set the hours.
  - 3 Press **SLEEP/TIMER** to confirm. → The minute digits flash on the display screen.
  - 4 Turn **VOLUME +/-** clockwise or anticlockwise or press **VOL +/-** on the remote to set the minutes.
  - 5 Press **SLEEP/TIMER** to confirm the time setting. → "OFF" flashes on the display screen.
  - 6 Turn **VOLUME +/-** clockwise or anticlockwise or press **VOL +/-** on the remote to select "ON". →  icon appears on the display screen.

## To deactivate the timer

- Select "OFF" at Step 6.

## Activating and deactivating SLEEP

The sleep timer enables the system to switch off by itself after a set period of time.

- Press **SLEEP/TIMER** on the remote control. → The display shows one of the sleep time options in the following sequence: SLEEP--OFF, SLEEP--10, SLEEP--20, ... SLEEP--90, SLEEP--OFF ... Once the sleep function is activated, the SLEEP icon will be displayed.
- To deactivate, press **SLEEP/TIMER** on the remote control once or more until OFF is shown, or press **STANDBY-ON/ ECO POWER**  (or  on the remote). → SLEEP disappears.

# Specifications

## AMPLIFIER

Output power ..... 2 x 25 W RMS/150W total power  
..... 2 x 25 W RMS/150W total power  
Signal-to-noise ratio .....  $\geq 70$  dBA  
Frequency response ..... 20 Hz – 20 KHz,  $\pm 3$  dB  
Input sensitivity AUX ..... 0.5 V (max. 2 V)  
Impedance loudspeakers ..... 8  $\Omega$   
Impedance headphones ..... 32  $\Omega$   
Output power headphones ..... <50 mW

## CD PLAYER

Frequency range ..... 20 Hz – 20 kHz  
Signal-to-noise ratio ..... 70 dBA

## TUNER

FM Frequency range ..... 87.5-108 MHz  
FM Noise limit sensitivity .....  $\leq 20$  mV/M  
FM S/N .....  $\geq 46$  dB  
AM Frequency range ..... 520-1710 kHz  
AM Noise limit sensitivity .....  $\leq 3.0$  mV/m  
AM S/N .....  $\geq 40$  dB

## USB PLAYER

USB ..... 12Mb/s, V1.1  
..... support MP3 and WMA files  
Number of albums/folders ..... maximum 99  
Number of tracks/titles ..... maximum 400

## SPEAKERS

Bass reflex system  
Dimensions (w x h x d) . 150 x 150 x 215 (mm)

## GENERAL INFORMATION

AC Power ..... 120 V / 60 Hz  
Dimensions (w x h x d) . 208 x 156 x 268 (mm)  
Weight(with/without speakers) ..... 4.30 / 2.31 kg  
Standby power consumption ..... <7 W  
Eco power standby ..... <1 W

**Specifications and external appearance are subject to change without notice.**

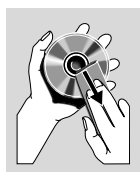
# Maintenance

## Cleaning the Cabinet

- Use a soft cloth slightly moistened with a mild detergent solution. Do not use a solution containing alcohol, spirits, ammonia or abrasives.

## Cleaning Discs

- When a disc becomes dirty, clean it with a cleaning cloth. Wipe the disc from the centre out.
- Do not use solvents such as benzene, thinner, commercially available cleaners, or antistatic spray intended for analogue records.



## Cleaning the disc lens

- After prolonged use, dirt or dust may accumulate at the disc lens. To ensure good playback quality, clean the disc lens with Philips CD Lens Cleaner or any commercially available cleaner. Follow the instructions supplied with cleaner.

## WARNING

*Under no circumstances should you try to repair the system yourself, as this will invalidate the warranty. Do not open the system as there is a risk of electric shock.*

*If a fault occurs, first check the points listed below before taking the system for repair. If you are unable to remedy a problem by following these hints, consult your dealer or Philips for help.*

Problem	Solution
<b>“NO DISC” is displayed.</b>	<ul style="list-style-type: none"> <li>✓ Insert a disc.</li> <li>✓ Check if the disc is inserted upside down.</li> <li>✓ Wait until the moisture condensation at the lens has cleared.</li> <li>✓ Replace or clean the disc, see “Maintenance”.</li> <li>✓ Use a finalised CD-RW or correct format disc.</li> </ul>
<b>Radio reception is poor.</b>	<ul style="list-style-type: none"> <li>✓ If the signal is too weak, adjust the antenna or connect an external antenna for better reception.</li> <li>✓ Increase the distance between the Micro HiFi System and your TV or VCR.</li> </ul>
<b>The system does not react when buttons are pressed.</b>	<ul style="list-style-type: none"> <li>✓ Remove and reconnect the AC power plug and switch on the system again.</li> </ul>
<b>Sound cannot be heard or is of poor quality.</b>	<ul style="list-style-type: none"> <li>✓ Adjust the volume.</li> <li>✓ Disconnect the headphones.</li> <li>✓ Check that the speakers are connected correctly.</li> <li>✓ Check if the stripped speaker wire is clamped.</li> </ul>
<b>The left and right sound outputs are reversed.</b>	<ul style="list-style-type: none"> <li>✓ Check the speaker connections and location.</li> </ul>
<b>The remote control does not function properly.</b>	<ul style="list-style-type: none"> <li>✓ Select the source (CD or TUNER for example) before pressing the function button ( <b>▶  </b> , <b>◀◀</b> / <b>▶▶</b> ).</li> <li>✓ Reduce the distance between the remote control and the system.</li> <li>✓ Insert the battery with its polarities (+/- signs) aligned as indicated.</li> <li>✓ Replace the battery.</li> <li>✓ Point the remote control directly toward IR sensor on the front of the system.</li> </ul>
<b>The timer is not working.</b>	<ul style="list-style-type: none"> <li>✓ Set the clock correctly.</li> <li>✓ Switch on the timer.</li> </ul>
<b>The Clock/Timer setting is erased.</b>	<ul style="list-style-type: none"> <li>✓ Power has been interrupted or the power cord has been disconnected. Reset the clock/timer.</li> </ul>

# Troubleshooting

Problem	Solution
<p><b>Some files on the USB device are not displayed.</b></p>	<p>✓ Check if the number of folders exceeds 99 or the number of titles exceeds 400.</p>
<p><b>“DEVICE NOT SUPPORTED” scrolls on the display.</b></p>	<p>✓ Remove the USB mass storage device or select another source.</p>
<p><b>The STOP ■ and some buttons on MCM704D and its remote control have no function.</b></p>	<p>✓ The playback of the docked player cannot be stopped using the <b>STOP ■</b> button on MCM704D and its remote control.</p> <p>✓ Only the following buttons are available: <b>▶  ◀◀</b>, <b>▶▶</b>, <b>▲</b>, <b>▼</b>, <b>DISPLAY/MENU</b> and <b>OK</b>.</p>

# PHILIPS LIMITED WARRANTY ONE (1) YEAR

## WARRANTY COVERAGE:

PHILIPS warranty obligation is limited to the terms set forth below.

## WHO IS COVERED:

Philips warrants the product to the original purchaser or the person receiving the product as a gift against defects in materials and workmanship as based on the date of original purchase ("Warranty Period") from an Authorized Dealer. The original sales receipt showing the product name and the purchase date from an authorized retailer is considered such proof.

## WHAT IS COVERED:

The Philips warranty covers new products if a defect arises and a valid claim is received by Philips within the Warranty Period. At its option, Philips will either (1) repair the product at no charge, using new or refurbished replacement parts, or (2) exchange the product with a product that is new or which has been manufactured from new, or serviceable used parts and is at least functionally equivalent or most comparable to the original product in Philips current inventory, or (3) refund the original purchase price of the product.

Philips warrants replacement products or parts provided under this warranty against defects in materials and workmanship from the date of the replacement or repair for ninety (90) days or for the remaining portion of the original product's warranty, whichever provides longer coverage for you. When a product or part is exchanged, any replacement item becomes your property and the replaced item becomes Philips' property. When a refund is given, your product becomes Philips' property.

**Note: Any product sold and identified as refurbished or renewed carries a ninety (90) day limited warranty.**

**Replacement product can only be sent if all warranty requirements are met. Failure to follow all requirements can result in delay.**

## WHAT IS NOT COVERED - EXCLUSIONS AND LIMITATIONS:

This Limited Warranty applies only to the new products manufactured by or for Philips that can be identified by the trademark, trade name, or logo affixed to it. This Limited Warranty does not apply to any non-Philips hardware product or any software, even if packaged or sold with the product. Non-Philips manufacturers, suppliers, or publishers may provide a separate warranty for their own products packaged with the bundled product.

Philips is not liable for any damage to or loss of any programs, data, or other information stored on any media contained within the product, or any non-Philips product or part not covered by this warranty. Recovery or reinstallation of programs, data or other information is not covered under this Limited Warranty.

This warranty does not apply (a) to damage caused by accident, abuse, misuse, misapplication, or non-Philips product, (b) to damage caused by service performed by anyone other than Philips or Philips Authorized Service Location, (c) to a product or a part that has been modified without the written permission of Philips, or (d) if any Philips serial number has been removed or defaced, or (e) product, accessories or consumables sold "AS IS" without warranty of any kind by including refurbished Philips product sold "AS IS" by some retailers.

## This Limited Warranty does not cover:

- Shipping charges to return defective product to Philips.
- Labor charges for installation or setup of the product, adjustment of customer controls on the product, and installation or repair of antenna systems outside of the product.
- Product repair and/or part replacement because of improper installation, connections to improper voltage supply, abuse, neglect, misuse, accident, unauthorized repair or other cause not within the control of Philips.
- Damage or claims for products not being available for use, or for lost data or lost software.
- Damage occurring to product during shipping.
- A product that requires modification or adaptation to enable it to operate in any country other than the country for which it was designed, manufactured, approved and/or authorized, or repair of products damaged by these modifications.
- A product used for commercial or institutional purposes (including but not limited to rental purposes).
- Product lost in shipment and no signature verification receipt can be provided.
- Failure to operate per Owner's Manual.

## TO OBTAIN ASSISTANCE IN THE U.S.A., PUERTO RICO, OR U.S. VIRGIN ISLANDS...

Contact Philips Customer Care Center at:  
1-888-PHILIPS (1-888-744-5477)

## TO OBTAIN ASSISTANCE IN CANADA...

1-800-661-6162 (French Speaking)  
1-888-PHILIPS (1-888-744-5477) - (English or Spanish Speaking)

REPAIR OR REPLACEMENT AS PROVIDED UNDER THIS WARRANTY IS THE EXCLUSIVE REMEDY FOR THE CONSUMER. PHILIPS SHALL NOT BE LIABLE FOR ANY INCIDENTAL OR CONSEQUENTIAL DAMAGES FOR BREACH OF ANY EXPRESS OR IMPLIED WARRANTY ON THIS PRODUCT. EXCEPT TO THE EXTENT PROHIBITED BY APPLICABLE LAW, ANY IMPLIED WARRANTY OF MERCHANTABILITY OR FITNESS FOR A PARTICULAR PURPOSE ON THIS PRODUCT IS LIMITED IN DURATION TO THE DURATION OF THIS WARRANTY.

Some states do not allow the exclusions or limitation of incidental or consequential damages, or allow limitations on how long an implied warranty lasts, so the above limitations or exclusions may not apply to you.

*This warranty gives you specific legal rights. You may have other rights which vary from state/province to state/province.*

Philips, P.O. Box 671539, Marietta, GA. 30006-0026

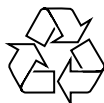
3121 233 48801

PHILIPS CONSUMER ELECTRONICS NORTH AMERICA  
P.O. Box 671539, Marietta, GA. 30006-0026  
Meet Philips at the Internet  
<http://www.philips.com>  
<http://www.philips.com/support>

English

Français

Español



MCM704D



© Royal Philips Electronics N.V. 2007  
All rights reserved.

Printed in China

PDCC-JS\_JW-0714