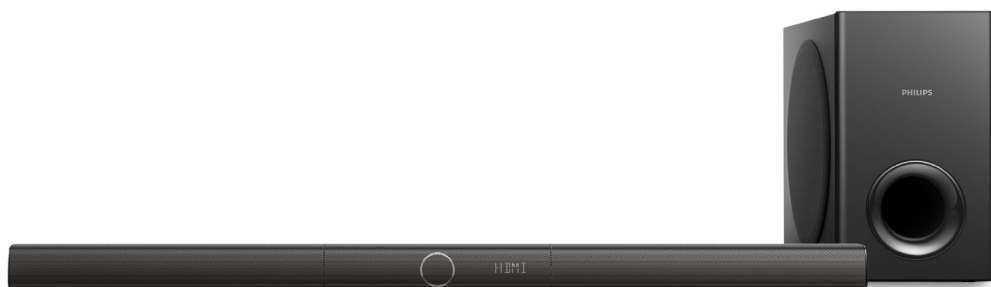


Always there to help you

Register your product and get support at
www.philips.com/support



HTL3170B



User manual

PHILIPS

Contents

1 Important	2
Important safety instructions	2
Care for your product	3
Care of the environment	3
Help and support	4

2 Your product	4
Main unit	4
Remote control	5
Connectors	6
Wireless subwoofer	6

3 Connect	7
Placement	7
Pair up with the subwoofer	7
Connect audio from TV	7
Connect audio from other devices	9

4 Use your product	10
Adjust the volume	10
Choose your sound	10
Play audio through Bluetooth	10
Connect Bluetooth via NFC	11
MP3 player	11
USB storage devices	12
Auto standby	12
Set display brightness	12
Apply factory settings	12

5 Update software	13
Check software version	13
Update software via USB	13

6 Wall mount	14
---------------------	----

7 Product specifications	14
---------------------------------	----

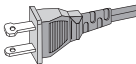

8 Troubleshooting	15
--------------------------	----

9 Notice	17
-----------------	----

1 Important

Read and understand all instructions before you use your product. If damage is caused by failure to follow instructions, the warranty does not apply.

Important safety instructions

- **Read these instructions.**
- **Keep these instructions.**
- **Heed all warnings.**
- **Follow all instructions.**
- **Do not use this apparatus near water.**
- **Clean only with dry cloth.**
- **Do not block any ventilation openings.**
Install in accordance with the manufacturer's instructions.
- **Do not install near any heat sources** such as radiators, heat registers, stoves, or other apparatus (including amplifiers) that produce heat.
- **Do not defeat the safety purpose** of the polarized or grounding-type plug.

A polarized plug has two blades with one wider than the other. A grounding type plug has two blades and a third grounding prong. The wide blade or the third prong are provided for your safety. If the provided plug does not fit into your outlet, consult an electrician for replacement of the obsolete outlet.
- **Protect the power cord** from being walked on or pinched, particularly at plugs, convenience receptacles, and the point where they exit from the apparatus.
- **Only use attachments/accessories** specified by the manufacturer.
- **Use only with the cart,** stand, tripod, bracket or table specified by the manufacturer or sold with the apparatus.

When a cart is used, use caution when

moving the cart/apparatus combination to avoid injury from tip-over.

- **Unplug this apparatus** during lightning storm or when unused for long periods of time.
- **Refer all servicing** to qualified service personnel. Servicing is required when the apparatus has been damaged in any way, such as power-supply cord or plug is damaged, liquid has been spilled or objects have fallen into the apparatus, the apparatus has been exposed to rain or moisture, does not operate normally, or has been dropped.
- **Battery usage CAUTION** - To prevent battery leakage which may result in bodily injury, property damage, or damage to the unit:
 - Install **all** batteries correctly, + and - as marked on the unit.
 - Do not mix batteries (**old and new** or **carbon** and **alkaline**, etc.).
 - Remove batteries when the unit is not used for a long time.
 - The batteries shall not be exposed to excessive heat such as sunshine, fire or the like.
 - Perchlorate Material - special handling may apply. See www.dtsc.ca.gov/hazardouswaste/perchlorate.
- The product/remote control may contain a coin/button type battery, which can be swallowed. Keep the battery out of reach of children at all times! If swallowed, the battery can cause serious injury or death. Severe internal burns can occur within two hours of ingestion.
- If you suspect that a battery has been swallowed or placed inside any part of the body, seek immediate medical attention.
- When you change the batteries, always keep all new and used batteries out of reach of children. Ensure that the battery compartment is completely secure after you replace the battery.
- If the battery compartment cannot be completely secured, discontinue use of the product. Keep out of reach of children and contact the manufacturer.

- **Apparatus shall not be exposed to dripping or splashing.**
- **Do not place any sources of danger on the apparatus** (for example, liquid filled objects, lighted candles).
- This apparatus may contain lead and mercury. Dispose according to local, State or Federal laws. For disposal or recycling information, please contact your local authorities. For additional assistance on recycling options, please contact www.mygreenelectronics.com or www.eiae.org or www.recycle.philips.com.
- Where the MAINS plug or an appliance coupler is used as the disconnect device, the disconnect device shall remain readily operable.
- Do not place this apparatus on the furniture that is capable of being tilted by a child and an adult leaning, pulling, standing or climbing on it. A falling apparatus can cause serious injury or even death.
- This apparatus should not be placed in a built-in installation such as a bookcase or rack unless proper ventilation is provided. Make sure to leave a space of 7.8 inches (20cm) or more around this apparatus.

Class II equipment symbol



This symbol indicates that the unit has a double insulation system.

Know these safety symbols



This 'bolt of lightning' indicates uninsulated material within your unit may cause an electrical shock.

For the safety of everyone in your household, please do not remove product covering.



The 'exclamation point' calls attention to features for which you should read the enclosed literature closely to prevent operating and maintenance problems.

WARNING: To reduce the risk of fire or electric shock, this apparatus should not be exposed to rain or moisture and objects filled with liquids, such as vases, should not be placed on this apparatus.

CAUTION: To prevent electric shock, match wide blade of plug to wide slot, fully insert.

Care for your product

Use only microfiber cloth to clean the product.

Care of the environment

Disposal of your old product and battery



Your product is designed and manufactured with high quality materials and components, which can be recycled and reused.

This product may contain lead and mercury. Disposal of these materials may be regulated due to environmental considerations. For disposal or recycling information, please contact your local authorities or visit www.recycle.philips.com.

This product contains batteries:

- Dispose of batteries properly. Do not incinerate. Batteries may explode if overheated.
- Do not wrap in metal or aluminum foil. Wrap in newspaper before discarding.
- It is suggested that you contact your local town or city to determine proper battery redemption site(s) in your area.
- Please visit www.call2recycle.org for additional information on a recycling center in your area for rechargeable batteries.

Help and support

For extensive online support, visit www.philips.com/support to:

- download the user manual and the quick start guide
- watch video tutorials (available only for selected models)
- find answers to frequently answered questions (FAQs)
- email us a question
- chat with our support representative.

Follow the instructions on the website to select your language, and then enter your product model number.

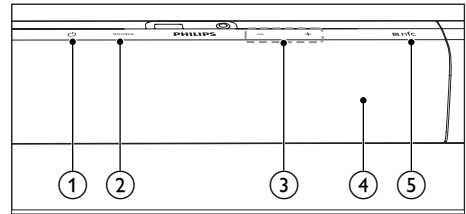
Alternatively, you can contact Consumer Care in your country. Before you contact, note down the model number and serial number of your product. You can find this information on the back or bottom of your product.

2 Your product

Congratulations on your purchase, and welcome to Philips! To fully benefit from the support that Philips offers (e.g. notification of product software upgrade), register your product at www.philips.com/welcome.

Main unit

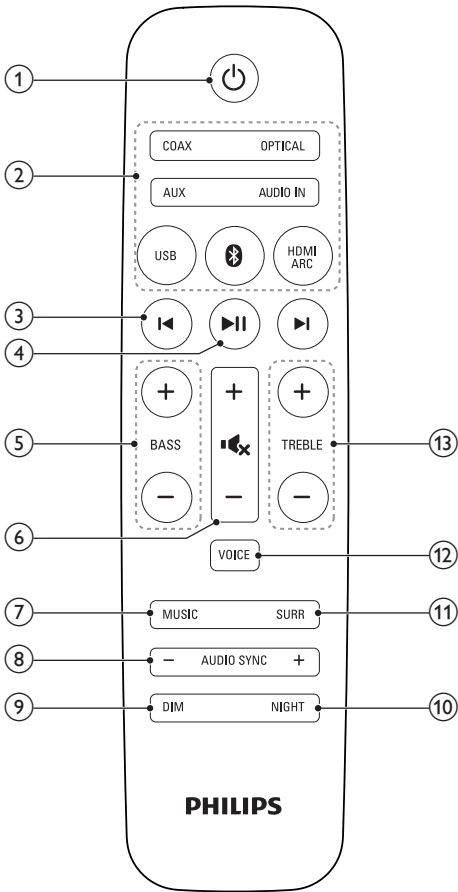
This section includes an overview of the main unit.



- ① **Power**
Switch this product on or to standby.
- ② **SOURCE**
Select an input source for this product.
- ③ **Volume +/-**
Increase or decrease volume.
- ④ **Display panel**
- ⑤ **NFC tag**
Tap the NFC-enabled device on the tag for Bluetooth connection.

Remote control

This section includes an overview of the remote control.



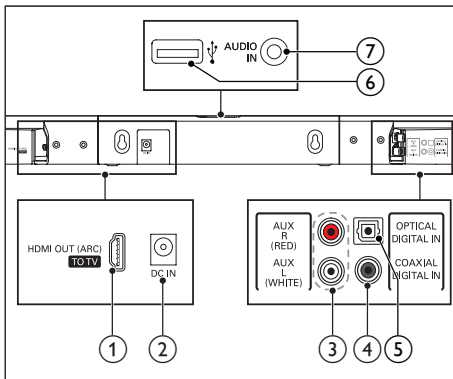
- ① **⏻ (Standby-On)**
Switch this product on or to standby.
- ② **Source buttons**
COAX: Switch your audio source to the coaxial connection.
OPTICAL: Switch your audio source to the optical connection.
AUX: Switch your audio source to the AUX connection.

AUDIO IN: Switch your audio source to the MP3 connection (3.5mm jack).
USB: Switch to USB mode.
Bluetooth: Switch to Bluetooth mode.
HDMI ARC: Switch your source to HDMI ARC connection.

- ③ **⏮ / ⏭ (Previous/Next)**
Skip to the previous or next track in USB mode.
- ④ **⏮ | ⏭ (Play/Pause)**
Start, pause or resume play in USB mode.
- ⑤ **BASS +/-**
Increase or decrease bass.
- ⑥ **Volume control**
 - +/-: Increase or decrease volume.
 - 🔊: Mute or restore volume.
- ⑦ **MUSIC**
Select stereo sound mode for the best music experience.
- ⑧ **AUDIO SYNC +/-**
Increase or decrease audio delay.
- ⑨ **DIM**
Set the brightness of the display panel for this product.
- ⑩ **NIGHT**
Turn night mode on or off.
- ⑪ **SURR (MOVIE)**
Select surround sound mode for the best movie experience.
- ⑫ **VOICE**
Select voice sound mode to enhance voice clarity.
- ⑬ **TREBLE +/-**
Increase or decrease treble.

Connectors

This section includes an overview of the connectors available on this product.



① HDMI OUT (ARC) - TO TV

Connect to the HDMI (ARC) input on the TV.

② DC IN

Connect to the power supply.

③ AUX IN (L/R)

Connect to an analog audio output on the TV or an analog device.

④ DIGITAL IN-COAXIAL

Connect to a coaxial audio output on the TV or a digital device.

⑤ DIGITAL IN-OPTICAL

Connect to an optical audio output on the TV or a digital device.

⑥ •⇄ (USB)

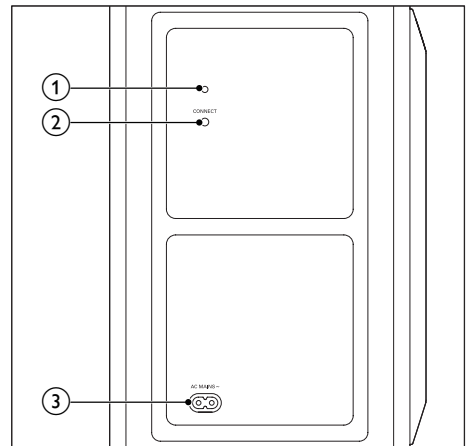
- Connect to a USB storage device for audio media play.
- Upgrade software of this product.
- Charge a USB device.

⑦ AUDIO IN

Audio input from, for example, an MP3 player (3.5mm jack).

Wireless subwoofer

This product comes with a wireless subwoofer.



① Subwoofer indicator

- When the power is turned on, the indicator lights up.
- During wireless pairing between the subwoofer and the main unit, the indicator blinks white quickly.
- When the pairing succeeds, the indicator lights up white.
- When the pairing fails, the indicator blinks white slowly.
- When wireless connection is disconnected for one minute, the indicator turns off.

② CONNECT (connect)

Press and hold to enter the pairing mode for the subwoofer.

③ AC MAINS~

Connect to the power supply.

3 Connect

This section helps you connect this product to a TV and other devices.

For information about the basic connections of this product and accessories, see the quick start guide.

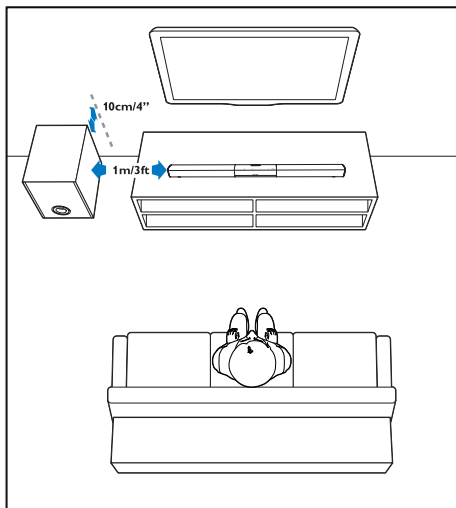
Note

- For identification and supply ratings, see the type plate at the back or bottom of the product.
- Before you make or change any connections, make sure that all devices are disconnected from the power outlet.

Placement

Place the subwoofer at least 1 meter (3 feet) away from the main unit, and 10 centimeters (4 inches) away from the wall.

For best results, place your subwoofer as shown below.



Pair up with the subwoofer

The wireless subwoofer automatically pairs up with the main unit for wireless connection when you turn on the main unit and the subwoofer. If no audio from the wireless subwoofer can be heard, manually pair up the subwoofer:

- 1 Turn on the main unit and the subwoofer.
 - ↳ If the connection to the main unit is lost, the indicator on the subwoofer blinks white slowly.
- 2 Press and hold the **CONNECT** (connect) button on the subwoofer to enter the pairing mode.
 - ↳ The indicator on the subwoofer blinks white quickly.
- 3 On the remote control, within six seconds press **⏮** twice then **BASS** - once, **TREBLE** - once and then **⏭**.
 - ↳ If the pairing succeeds, the indicator on the subwoofer lights up white.
 - ↳ If the pairing fails, the indicator on the subwoofer blinks white slowly.
- 4 If the pairing fails, repeat the steps above.

Connect audio from TV

Connect this product to a TV. You can listen to audio from TV programs through the speakers of this product.

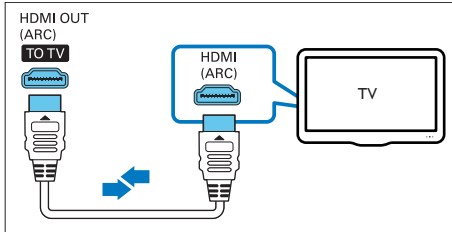
Option 1: Connect to TV through HDMI (ARC)

Best quality audio

This product supports HDMI with Audio Return Channel (ARC). With the ARC feature, you can hear the TV audio through this product by using a single HDMI cable.

What you need

- A High Speed HDMI Cable.
- Your TV supports both HDMI ARC and HDMI-CEC (see the TV user manual for details).
- For some TV models, enable the external speaker output from the TV setting menu (see the TV user manual for details).



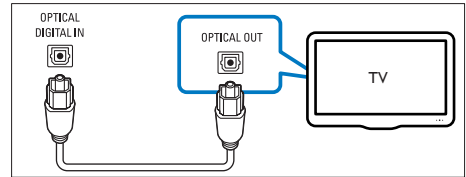
- 1 Using a High Speed HDMI cable, connect the **HDMI OUT (ARC)** connector on this product to the **HDMI ARC** connector on the TV.
 - The **HDMI ARC** connector on the TV might be labeled differently. For details, see the TV user manual.
- 2 On your TV, turn on HDMI-CEC operations.
 - For HDMI-CEC issues on your TV, see the TV user manual to make sure that the HDMI-CEC setup is correct, or contact the TV manufacturer if needed.
- 3 Press **HDMI ARC** on the remote control of this product to enable the HDMI ARC connection.

Note

- 100% interoperability with all HDMI-CEC devices is not guaranteed.
- If your TV is not HDMI ARC compliant, connect an audio cable to hear the TV audio through this product.

Option 2: Connect to TV through optical cable

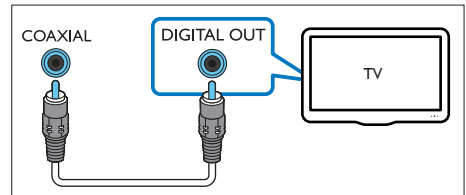
Best quality audio



- 1 Using an optical cable, connect the **OPTICAL** connector on this product to the optical output on the TV.
 - The digital optical output on the TV might be labeled **OPTICAL OUT**, **SPDIF** or **SPDIF OUT**.
- 2 Press **OPTICAL** on the remote control of this product to enable the optical connection.

Option 3: Connect to TV through coaxial cable

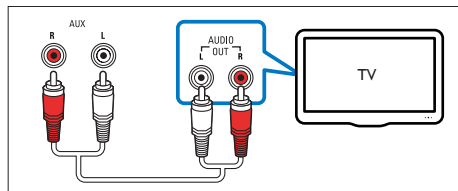
Best quality audio



- 1 Using a coaxial cable, connect the **COAXIAL** connector on this product to the coaxial output on the TV.
 - The digital coaxial output on the TV might be labeled **COAXIAL/DIGITAL OUT** or **DIGITAL AUDIO OUT**.
- 2 Press **COAX** on the remote control of this product to enable the coaxial connection.

Option 4: Connect to TV through analog audio cables

Basic quality audio



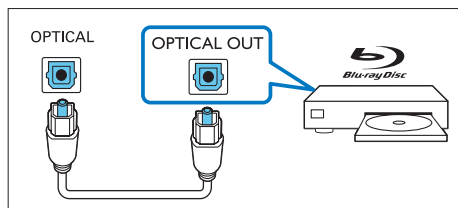
- 1 Using an analog audio cable, connect the **AUX** connectors on this product to the analog audio output on the TV.
 - The analog audio output on the TV might be labeled **AUDIO OUT**.
- 2 Press **AUX** on the remote control of this product to enable the analog audio connection.

Connect audio from other devices

You may also play audio from other devices through the speakers of this product.

Option 1: Connect to other device through optical cable

Best quality audio

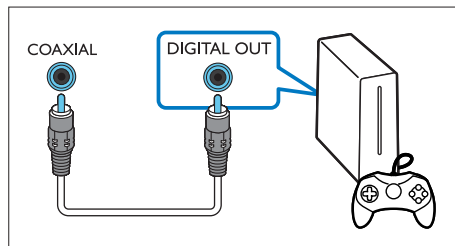


- 1 Using an optical cable, connect the **OPTICAL** connector on this product to the optical output on the external device.
 - The digital optical output on the external device might be labeled **OPTICAL OUT**, **SPDIF** or **SPDIF OUT**.

- 2 Press **OPTICAL** on the remote control of this product to enable the optical connection.

Option 2: Connect to other device through coaxial cable

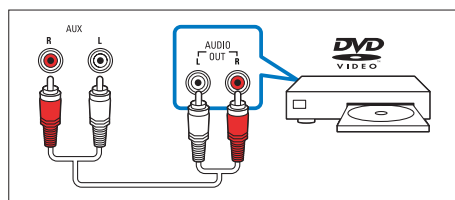
Best quality audio



- 1 Using a coaxial cable, connect the **COAXIAL** connector on this product to the coaxial output on the external device.
 - The digital coaxial output on the external device might be labeled **COAXIAL/DIGITAL OUT** or **DIGITAL AUDIO OUT**.
- 2 Press **COAX** on the remote control of this product to enable the coaxial connection.

Option 3: Connect to other device through analog audio cables

Basic quality audio



- 1 Using an analog audio cable, connect the **AUX** connector on this product to the analog audio output on the external device.
 - The analog audio output on the external device might be labeled **AUDIO OUT**.
- 2 Press **AUX** on the remote control of this product to enable the analog audio connection.



4 Use your product

This section helps you use this product to play media from a wide range of sources.

Before you start

- Make the necessary connections described in the quick start guide or download the user manual from www.philips.com/support.
- Switch this product to the correct source for other devices.

Adjust the volume

- 1 Press **Volume +/-** to increase or decrease a volume level.
 - To mute sound, press .
 - To restore the sound, press  again or press **Volume +/-**.

Choose your sound

This section helps you choose the ideal sound for your video or music.

Surround sound mode

Experience an immersive audio experience with surround sound modes.

- Press **SURR (MOIVE)** to create a surround listening experience. Ideal for watching movie.
- Press **MUSIC** to create stereo sound. Ideal for listening to music.
- Press **VOICE** to create sound effect which makes human voice more clear and outstanding for listening.

Equalizer

Change the high frequency (treble) and low frequency (bass) settings of this product.

- 1 Press **TREBLE +/-** or **BASS +/-** to change the frequency.

Synchronize video and sound

If the audio and video are not synchronized, delay the audio to match the video.

- 1 Press **AUDIO SYNC +/-** to synchronize the audio with the video.
 - **AUDIO SYNC +** increases the sound delay, and **AUDIO SYNC -** decreases the sound delay.

Night mode

For quiet listening, night mode decreases the volume of loud sounds when audio is played. Night mode is only available for Dolby Digital soundtracks.

- 1 Press **NIGHT** to turn night mode on or off.
 - ↳ When night mode is turned on, **ON NIGHT** scrolls twice on the display panel.
 - ↳ When night mode is turned off, **OFF NIGHT** scrolls twice on the display panel.

Play audio through Bluetooth

Through Bluetooth, connect this product with your Bluetooth device (such as an iPad, iPhone, iPod touch, Android phone, or laptop), and then you can listen to the audio files stored on the device through the speakers of this product.

What you need

- A Bluetooth device which supports Bluetooth profile A2DP, AVRCP and with Bluetooth version as 4.0 + EDR.

- The maximum operational range between the main unit and a Bluetooth device is approximately 10 meters (30 feet).

- 1 Press **0** on the remote control to switch this product to Bluetooth mode.
 - ↳ **BT** is displayed on the display panel, blinking.
- 2 On the Bluetooth device, switch on Bluetooth, search for and select **Philips HTL3170** to start connection (see the user manual of the Bluetooth device on how to enable Bluetooth).
 - ↳ During connection, **BT** on the display panel blinks.
- 3 Wait until this product beeps.
 - ↳ When the Bluetooth connection succeeds, **BT** is displayed on the display panel.
 - ↳ If the connection fails, **BT** on the display panel blinks continuously.
- 4 Select and play audio files or music on your Bluetooth device.
 - During play, if a call is coming, music play is paused. Play resumes when the call ends (this feature is dependent on the connected mobile phone).
 - If your Bluetooth device supports AVRCP profile, on the remote control you can press **◀/▶** to skip to a track, or press **⏸** to pause/resume play.
- 5 To exit Bluetooth, select other source.
 - When you switch back to Bluetooth mode, Bluetooth connection remains active.

Note

- The music streaming may be interrupted by obstacles between the device and this product, such as wall, metallic casing that covers the device, or other devices nearby that operate in the same frequency.
- If you want to connect this product with another Bluetooth device, press and hold **0** on the remote control to disconnect the currently connected Bluetooth device.

Connect Bluetooth via NFC

NFC (Near Field Communication) is a technology that enables short-range wireless communication between NFC-enabled devices, such as mobile phones.

What you need

- A Bluetooth device with NFC function.
- For pairing, tap the NFC device on the **NFC** tag of this product.

- 1 Enable NFC on the Bluetooth device (see the device's user manual for details).
- 2 Tap the NFC device onto the **NFC** tag of this product until this product beeps.
 - For first time connection, on some mobile devices prompt for pair-up appears, select "YES" for connection.
 - ↳ When the Bluetooth connection succeeds, **BT** is displayed on the display panel.
 - ↳ If the connection fails, **BT** on the display panel blinks continuously.
- 3 Select and play audio files or music on your NFC device.
 - To break the connection, tap again the NFC device onto the **NFC** tag on this product.

MP3 player

Connect your MP3 player to play your audio files or music.

What you need

- An MP3 player.
- A 3.5mm stereo audio cable.

- 1 Using the 3.5mm stereo audio cable, connect the MP3 player to the **AUDIO IN** connector on this product.
- 2 Press **AUDIO IN** on the remote control.

- 3 Press the buttons on the MP3 player to select and play audio files or music.

USB storage devices

Enjoy audio on a USB storage device, such as an MP3 player and USB flash memory, etc.

What you need

- A USB storage device that is formatted for FAT or NTFS file systems, and complies with the Mass Storage Class.
- An MP3 file on a USB storage device

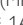
1 Connect a USB storage device to this product.

2 Press **USB** on the remote control.

3 Use the remote control to control play.

- Press **▶||** to start, pause or resume play.
- Press **◀/▶** to skip to the previous or next track.
- During USB play, press and hold **USB** to enter repeat mode, then press **USB** to select one of the following play modes.
 - **ONE RPT**: repeat the current track.
 - **ALL RPT**: repeat all the tracks in one folder.
 - **SHUFFLE**: play randomly in one folder.
 - **OFF RPT**: exit repeat or shuffle play mode.

Note

- This product may not be compatible with certain types of USB storage device.
- If you use a USB extension cable, USB HUB, or USB multi-reader, the USB storage device may not be recognized.
- Digital camera PTP and MTP protocols are not supported.
- Do not remove the USB storage device while it is being read.
- DRM-protected music files (MP3) are not supported.
- Support a USB port: 5V , 1A.

Auto standby

When playing media from a connected device, this product automatically switches to standby after 15 minutes of button inactivity and no audio/video play from a connected device.

Set display brightness

You can press **DIM** repeatedly to select a different brightness level of the display panel on this product.

If you select **AUTO OFF**, LED message is switched off after 10 seconds of button inactivity.

Apply factory settings

You can reset this product to the default settings programmed at the factory.

- 1 In any source mode, on the remote control press **Volume -**, **BASS -**, and **TREBLE -** in sequence within three seconds.
- ↳ When the factory settings restore is complete, the product automatically switches off and restarts.

5 Update software

To get the best features and support, update your product with the latest software.

Check software version

In any source mode, on the remote control press **TREBLE -**, **BASS -**, and **Volume -** in sequence.

↳ The software version number is displayed on the display panel.



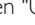
- 7 Wait until the update is completed.
↳ If the update is complete, this product automatically turns off and on again.



Caution

- Do not turn off the power or remove the USB storage device when the software update is in progress because you might damage this player.

Update software via USB

- 1 Check the latest software version on www.philips.com/support.
 - Search for your model and click on "Software and drivers".
- 2 Download the software into a USB storage device.
 - ① Unzip the download if zipped, and make sure that the unzipped file is named "HTL3170.bin".
 - ② Put the "HTL3170.bin" file in the root directory.
- 3 Connect the USB storage device to the  (USB) connector on this product.
- 4 Press **HDMI ARC** to switch this product to the HDMI ARC source.
- 5 On the remote control, within six seconds press  twice then **Volume +** once, and then hold down **SURR (MOIVE)**.
 - ↳ On the display panel, "UPG" (upgrade) blinks slowly, then blinks quickly.
- 6 When "UPG" blinks fast, press  to start the update.
 - ↳ Then "UPG" (upgrade) is displayed on the display panel.

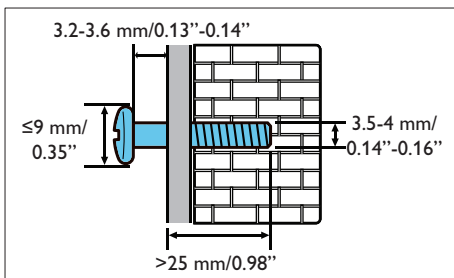
6 Wall mount

Note

- Before wall mounting, make sure the wall can support the weight of this product.
- For wall mounting, this product must be securely attached to the wall in accordance with the installation instructions. Improper wall mounting may result in accident, injury or damage. If you have any query, contact Consumer Care in your country.

Screw length/diameter

Depending on the type of wall mounting this product, make sure that you use screws of a suitable length and diameter:



See the illustration in the quick start guide on how to wall mount this product.

- 1) Drill two holes on the wall.
- 2) Secure the dowels and screws in the holes.
- 3) Hang this product on the fastening screws.

7 Product specifications

Note

- Specifications and design are subject to change without notice.

Amplifier

- FTC total output power: 150 W
 - Main unit:
60 W (1 % THD, 4 ohm, 400 Hz-20 kHz)
 - Subwoofer:
90 W (1 % THD, 3 ohm, 40 Hz-100 Hz)
- Total output power:
280 W RMS (+/- 0.5 dB, 10 % THD)
- Frequency response:
20 Hz-20 kHz / +/- 3 dB
- Signal-to-noise ratio:
> 65 dB (CCIR) / (A-weighted)
- Input sensitivity:
 - AUX: 2 V
 - AUDIO IN: 1 V

Audio

- S/PDIF Digital audio input:
 - Coaxial: IEC 60958-3
 - Optical: TOSLINK

USB

- Compatibility: Hi-Speed USB (2.0)
- Class support: USB Mass Storage Class (MSC)
- File system: FAT16, FAT32, NTFS
- Supports MP3 file formats

Bluetooth

- Bluetooth profiles: A2DP, AVRCP
- Bluetooth version: 4.0 + EDR

Main unit

- Power supply:
 - Model (Philips branded AC power adapter): NU040A320125
 - Input: 100-240 V~, 50/60 Hz 1.5 A
 - Output: 32 V \equiv , 1.25 A
- Standby power consumption: ≤ 0.5 W
- Dimensions (W x H x D):
950 x 51 x 69 mm / 37.4" x 2" x 2.7"
- Weight: 1.7 kg / 3.7 lbs
- **Built-in speakers:**
 - Drivers: 3 x woofer
(90mm/3.5" x 34mm/1.3") +
3 x tweeter (25.4mm/1")
 - Impedance:
4 ohm (woofer); 4 ohm (tweeter)
- Operating temperature and humidity:
0°C to 45°C, 5% to 90% humidity for all climates
- Storage temperature and humidity:
-40°C to 70°C, 5% to 95%

Subwoofer

- Power supply: 100-240 V~, 50/60 Hz
- Power consumption: 30 W
- Standby power consumption: ≤ 0.5 W
- Impedance: 4 ohm
- Speaker driver: 1 x 134 mm (5.25") woofer
- Dimensions (W x H x D):
180 x 301 x 331 mm / 7.1" x 11.9" x 13"
- Weight: 4.5 kg / 9.9 lbs

Remote control batteries

- 1 x AAA-R03-1.5 V

8 Troubleshooting



Warning

- Risk of electric shock. Never remove the casing of the product.

To keep the warranty valid, never try to repair the product yourself.

If you have problems using this product, check the following points before you request service. If you still have a problem, get support at www.philips.com/support.

Main unit

The buttons on this product do not work.

- Disconnect this product from the power supply for a few minutes, then reconnect.

Sound

No sound from the speakers of this product.

- Connect the audio cable from this product to your TV or other devices.
- Make sure that you connect the audio input on this product to the audio output on your TV or other devices.
- Reset this product to its factory settings.
- On the remote control, select the correct audio input.
- Make sure that this product is not muted.

Distorted sound or echo.

- If you play audio from the TV through this product, make sure that the TV is muted.

Audio and video are not synchronized.

- Press **AUDIO SYNC +/-** to synchronize the audio with the video.

Error message is displayed on the display panel.

- When "ERROR" is displayed, it indicates that an input audio format is not supported.

- When "ARC" blinks, it indicates that the connected TV is not HDMI ARC compliant or an unsupported audio format is detected.

Bluetooth

A device cannot connect with this product.

- The device does not support the compatible profiles required for this product.
- You have not enabled the Bluetooth function of the device. See the user manual of the device on how to enable the function.
- The device is not correctly connected. Connect the device correctly (see 'Play audio through Bluetooth' on page 10).
- This product is already connected with another Bluetooth device. Disconnect the connected device, then try again.

Quality of audio play from a connected

Bluetooth device is poor.

- The Bluetooth reception is poor. Move the device closer to this product, or remove any obstacle between the device and this product.

The connected Bluetooth device connects and disconnects constantly.

- The Bluetooth reception is poor. Move the device closer to this product, or remove any obstacle between the device and this product.
- Turn off Wi-Fi function on the Bluetooth device to avoid interference.
- For some Bluetooth, the Bluetooth connection can be deactivated automatically to save power. This does not indicate any malfunction of this product.

NFC

A device cannot connect with this product via NFC.

- Make sure that the device is supported by NFC.
- Make sure that NFC is enabled on the device (see the device's user manual for details).
- For pairing, tap the NFC device on the **NFC** tag of this product.

9 Notice

This section contains the legal and trademark notices.

Notice of compliance

The device complies with the FCC rules, Part 15. Operation is subject to the following two conditions:

- ① **This device may not cause harmful interference, and**
- ② **This device must accept any interference received, including interference that may cause undesired operation.**

FCC rules

This equipment has been tested and found to comply with the limits for a Class B digital device, pursuant to part 15 of the FCC Rules. These limits are designed to provide reasonable protection against harmful interference in a residential installation. This equipment generates, uses and can radiate radio frequency energy and, if not installed and used in accordance with the instruction manual, may cause harmful interference to radio communications. However, there is no guarantee that interference will not occur in a particular installation. If this equipment does cause harmful interference to radio or television reception, which can be determined by turning the equipment off and on, the user is encouraged to try to correct the interference by one or more of the following measures:

- Relocate the receiving antenna.
- Increase the separation between equipment and receiver.
- Connect the equipment into an outlet on a circuit different from that to which the receiver is connected.
- Consult the dealer or an experienced radio/TV technician for help.

FCC Radiation Exposure Statement: This equipment complies with FCC radiation exposure limits set forth for an uncontrolled environment. This equipment should be installed and operated with a minimum distance of 20cm between the radiator and your body. This transmitter must not be co-located or operated in conjunction with any other antenna or transmitter.

Warning: Any changes or modifications made to this device that are not expressly approved by Gibson Innovations may void the user's authority to operate the equipment.
Model number: HTL3170B/37
Trade Name: Philips
Responsible Party: Gibson Innovations USA Inc. 3070 Windward Plaza Suite F, Box 735, Alpharetta, GA 30005

Canada:

CAN ICES-3(B)/NMB-3(B)

This device complies with Industry Canada's licence-exempt RSSs. Operation is subject to the following Two conditions: (1) this device may not cause harmful interference, and (2) this device must accept any interference received, including interference that may cause undesired operation.

The device meets the exemption from the routine evaluation limits in section 2.5 of RSS 102 and compliance with RSS-102 RF exposure, users can obtain Canadian information on RF exposure and compliance.

This transmitter must not be co-located or operating in conjunction with any other antenna or transmitter. This equipment should be installed and operated with a minimum distance of 20 centimeters between the radiator and your body.



Manufactured under license from Dolby Laboratories. Dolby, Pro Logic, and the double-D symbol are trademarks of Dolby Laboratories.



The terms HDMI and HDMI High-Definition Multimedia Interface, and the HDMI Logo are trademarks or registered trademarks of HDMI Licensing LLC in the United States and other countries.



The Bluetooth® word mark and logos are registered trademarks owned by Bluetooth SIG, Inc. and any use of such marks by Gibson Innovations Limited is under license. Other trademarks and trade names are those of their respective owners.



The N Mark is a trademark or registered trademark of NFC Forum, Inc. in the United States and in other countries.

PHILIPS LIMITED WARRANTY ONE (1) YEAR

WARRANTY COVERAGE:

PHILIPS warranty obligation is limited to the terms set forth below.

WHO IS COVERED:

Philips warrants the product to the original purchaser or the person receiving the product as a gift against defects in materials and workmanship as based on the date of original purchase ("Warranty Period") from an Authorized Dealer. The original sales receipt showing the product name and the purchase date from an authorized retailer is considered such proof.

WHAT IS COVERED:

The Philips warranty covers new products if a defect in material or workmanship occurs and a valid claim is received by Philips within the Warranty Period. At its option, Philips will either (1) repair the product at no charge, using new or refurbished replacement parts, or (2) exchange the product with a product that is new or which has been manufactured from new, or serviceable used parts and is at least functionally equivalent or most comparable to the original product in Philips current inventory, or (3) refund the original purchase price of the product.

Philips warrants replacement products or parts provided under this warranty against defects in materials and workmanship from the date of the replacement or repair for ninety (90) days or for the remaining portion of the original product's warranty, whichever provides longer coverage for you. When a product or part is exchanged, any replacement item becomes your property and the replaced item becomes Philips' property. When a refund is given, your product becomes Philips' property.

Note: Any product sold and identified as refurbished or renewed carries a ninety (90) day limited warranty.

Replacement product can only be sent if all warranty requirements are met. Failure to follow all requirements can result in delay.

WHAT IS NOT COVERED - EXCLUSIONS AND LIMITATIONS:

This Limited Warranty applies only to the new products manufactured by or for Philips that can be identified by the trademark, trade name, or logo affixed to it. This Limited Warranty does not apply to any non-Philips hardware product or any software, even if packaged or sold with the product. Non-Philips manufacturers, suppliers, or publishers may provide a separate warranty for their own products packaged with the bundled product.

Philips is not liable for any damage to or loss of any programs, data, or other information stored on any media contained within the product, or any non-Philips product or part not covered by this warranty. Recovery or reinstallation of programs, data or other information is not covered under this Limited Warranty.

This warranty does not apply (a) to damage caused by accident, abuse, misuse, neglect, misapplication, or non-Philips product, (b) to damage caused by service performed by anyone other than Philips or Philips Authorized Service Location, (c) to a product or a part that has been modified without the written permission of

Philips, or (d) if any Philips serial number has been removed or defaced, or (e) product, accessories or consumables sold "AS IS" without warranty of any kind by including refurbished Philips product sold "AS IS" by some retailers.

This Limited Warranty does not cover:

- Shipping charges to return defective product to Philips.
- Labor charges for installation or setup of the product, adjustment of customer controls on the product, and installation or repair of antenna/signal source systems outside of the product.
- Product repair and/or part replacement because of improper installation or maintenance, connections to improper voltage supply, power line surge, lightning damage, retained images or screen markings resulting from viewing fixed stationary content for extended periods, product cosmetic appearance items due to normal wear and tear, unauthorized repair or other cause not within the control of Philips.
- Damage or claims for products not being available for use, or for lost data or lost software.
- Damage from mishandled shipments or transit accidents when returning product to Philips.
- A product that requires modification or adaptation to enable it to operate in any country other than the country for which it was designed, manufactured, approved and/or authorized, or repair of products damaged by these modifications.
- A product used for commercial or institutional purposes (including but not limited to rental purposes).
- Product lost in shipment and no signature verification receipt can be provided.
- Failure to operate per Owner's Manual.

TO OBTAIN ASSISTANCE IN THE U.S.A., CANADA, PUERTO RICO, OR U.S. VIRGIN ISLANDS...

Contact Philips Customer Care Center at:
1-866-309-0845

REPAIR OR REPLACEMENT AS PROVIDED UNDER THIS WARRANTY IS THE EXCLUSIVE REMEDY FOR THE CONSUMER. PHILIPS SHALL NOT BE LIABLE FOR ANY INCIDENTAL OR CONSEQUENTIAL DAMAGES FOR BREACH OF ANY EXPRESS OR IMPLIED WARRANTY ON THIS PRODUCT. EXCEPT TO THE EXTENT PROHIBITED BY APPLICABLE LAW, ANY IMPLIED WARRANTY OF MERCHANTABILITY OR FITNESS FOR A PARTICULAR PURPOSE ON THIS PRODUCT IS LIMITED IN DURATION TO THE DURATION OF THIS WARRANTY.

Some states do not allow the exclusions or limitation of incidental or consequential damages, or allow limitations on how long an implied warranty lasts, so the above limitations or exclusions may not apply to you.

This warranty gives you specific legal rights. You may have other rights which vary from state/province to state/province.

P&F USA, Inc. PO Box 2248, Alpharetta, GA 30023-2248

3140 035 51091



Specifications are subject to change without notice

2015 © Gibson Innovations Limited. All rights reserved.

This product has been manufactured by, and is sold under the responsibility of Gibson Innovations Ltd., and Gibson Innovations Ltd. is the warrantor in relation to this product. Philips and the Philips Shield Emblem are registered trademarks of Koninklijke Philips N.V. and are used under license from Koninklijke Philips N.V.

HTL3170B_37_UM_V2.0

