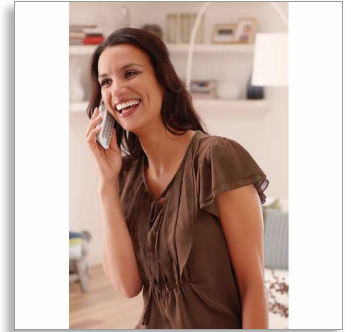




Philips BeNear  
Cordless phone answer  
machine

30 min answering machine  
2.0" display/ amber backlight  
Speakerphone



CD2951N

## Color your conversation

Superior sound, large display

Technology should be simple. That is why this phone is designed to produce outstanding sound, while providing the ease of a large display, backlit keypad and inbuilt answering machine. Enjoy superior sound, in a whole user-friendly way.

### Exceptional sound

- HQ-Sound: high quality acoustic engineering for superb sound
- MySound profiles to match your sound preference
- Acoustic echo cancellation keeps your conversation echo-free
- Optimized antenna layout for great reception in any room
- Handset speakerphone allows you to talk handsfree

### As convenient as it should be

- Large, 5.1 cm (2.0") dot-matrix display
- Up to 30 min. message on your answering machine
- Save up to 100 favorite contacts in your phonebook
- Keypad backlight for fast access even in dark room
- Up to 17 hours of talk time

### Eco-conscious product

- Zero power emission when ECO+ mode is activated
- Low power consumption: < 0.65 W in stand-by mode

**PHILIPS**

Cordless phone answer machine  
30 min answering machine 2.0" display/ amber backlight, Speakerphone

CD2951N/51

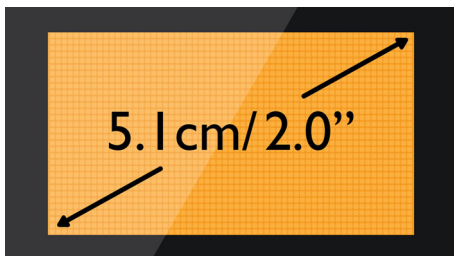
# Highlights

## 100-name phone book



Always have the phone numbers of your loved ones available: Save up to 100 names in your phonebook.

## 5.1cm (2.0")dot-matrix display

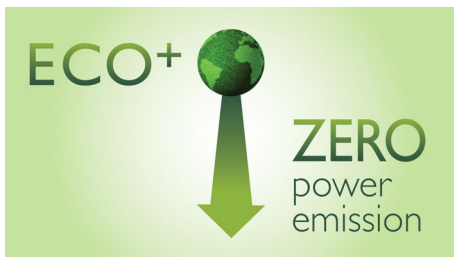


Large, 5.1 cm (2.0") dot-matrix display

## Acoustic echo cancellation

No more of those annoying echoes when you are talking on the phone. With our acoustic echo cancellation, you always get a clear, undisturbed connection.

## ECO+ mode



The ultimate mode to save transmitting power.

## Handset speakerphone



Handsfree mode uses a built-in loud speaker to amplify the voice of the caller, allowing you to speak and listen during a call without holding the phone to your ear. This is especially useful if you want to share the call with others or simply multitask.

## HQ-Sound

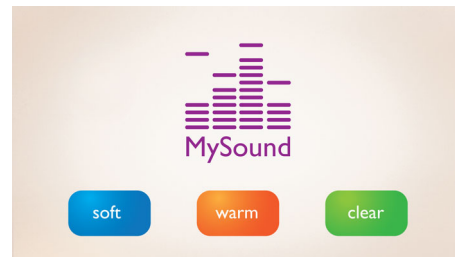


Philips cordless phones with HQ-Sound: build upon decades of experience and breakthrough innovations in developing Hi-Fi audio products and high-end headphones to deliver excellent voice clarity on our DECT phones. When it comes to improving sound quality, our acoustics engineers and architects have thought of everything – high quality components, digital signal processing, precise acoustic design, advanced testing and fine-tuning. The result is sound that is crisp, clear and authentic. Sound so good and natural, it is almost like being there in person.

## Keypad backlight

Keypad backlight for fast access even in dark room

## MySound profiles



Sound perception is subjective, and everyone has their own listening preference. MySound brings personality back to every conversation by allowing you to choose the audio profile that best matches your sound preferences: Clear – to make voices sound crisper and clearer; Soft – for friendly, softer tones; Warm – to make voices sound welcoming and warm.

## Optimized antenna layout



Our optimized antenna layout ensures strong and stable reception – even in areas of the house where cordless transmission is difficult. Now you can take a call wherever you are in the house, and enjoy a long, uninterrupted conversation even as you walk around.

## Up to 17 hours talk time



The phone can support up to 17 hours conversation on a single charge.

# Specifications

## Sound

- HQ-Sound
- Sound Profile: MySound
- Volume control on handset
- Ringtones on handset: 10 polyphonic

## Picture/Display

- Display size: 5.1cm / 2.0"
- Display type: FSTN - dot matrix
- Backlight: Yes
- Backlight color: Soft Amber

## Answering Machine

- Recording time capacity: up to 30 minutes
- Pre-recorded OGM
- Message counter on base: LED (Soft Amber)
- Loud speaker on base
- Answering machine control: from base & handset

## Convenience

- Menu structure in the handset: List Menu
- Speakerphone - talk handsfree
- Personalization: Silence mode and Night mode
- Signal strength indicator: 3- bar indicator
- Battery level indicator: 3- bar battery icon
- Intercom - multiple handsets
- Date / Time display
- Alarm Clock
- Battery charge indication
- Programmable hot keys: Key 1 and 2
- Call Management: Call Waiting\*, AOH/ Caller ID, Microphone mute, Missed Calls, Received Calls
- Key tone on/off
- Auto Registration
- Auto hang up
- Multi base capability: 1
- Multi handset capability: Up to 4
- Number of keys: 20
- Backlit keypad: Soft Amber
- Base Station keys: Paging key
- Up to 17 hrs talk time

- Up to 250 hrs standby time
- Charge time: 8 hours
- Line cord length: 1.8m
- Power cord length: 1.8m
- Range: Open field <300m; in door <50m

## Memory Capacity

- Phonebook: 100 names and numbers
- Redial List Capacity: 20 entries
- Call log entries: 50 entries
- Phonebook store in the base

## Power

- Battery capacity: 600 mAh
- Battery type: AAA NiMH Rechargeable
- Mains power: AC 100-240V ~50/60Hz
- Power Consumption: < 0.65 W

## Security

- Transmission encryption : Yes

## Network Features

- Compatible: GAP

## SAR Value

- Philips handsets: <0.1 W/kg

## Eco Design

- EcoMode: automatic & manual
- Full ECO Mode (NEMO)

## Packaging dimensions

- Packaging dimensions (W x H x D):  
18.5 x 13.6 x 9 cm
- EAN: 87 12581 65923 3
- Gross weight: 0.572 kg
- Nett weight: 0.449 kg
- Number of products included: 1
- Packaging type: Carton
- Tare weight: 0.123 kg



Issue date 2015-03-01

Version: 1.0.2

12 NC: 8670 000 94947  
EAN: 87 12581 65923 3

© 2015 Koninklijke Philips N.V.  
All Rights reserved.

Specifications are subject to change without notice.  
Trademarks are the property of Koninklijke Philips N.V.  
or their respective owners.

[www.philips.com](http://www.philips.com)