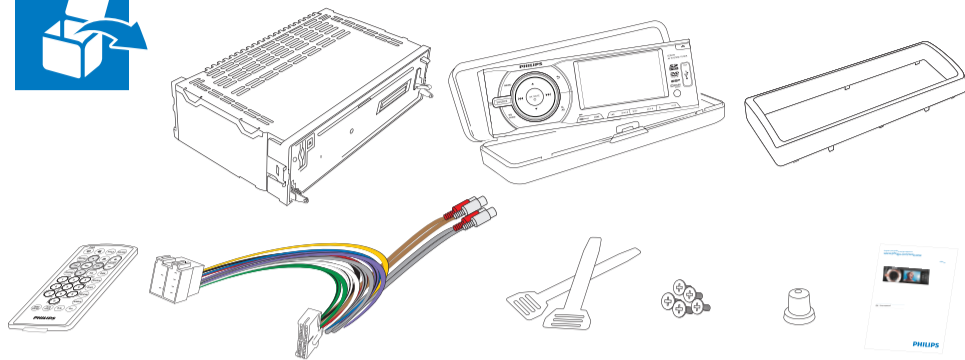
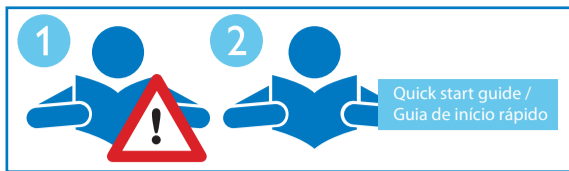
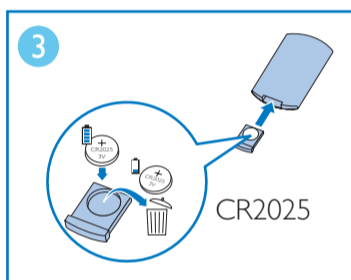
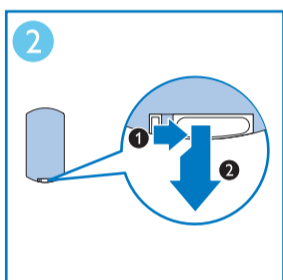
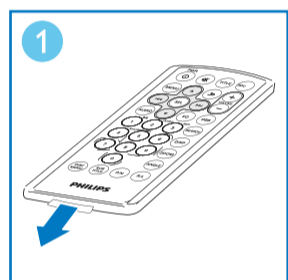


Quick start guide / Guia de início rápido CED229/55 , CED229/56

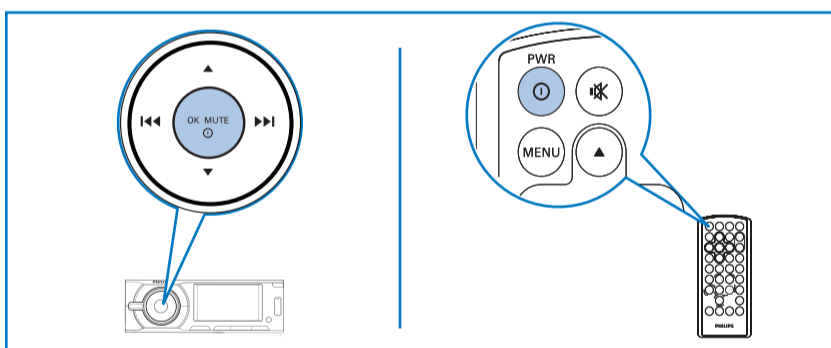


Caution / Cuidado

- Risk of explosion! Keep batteries away from heat, sunshine or fire. Never discard batteries in fire.
- Risk of decreased battery life! Never mix different brands or types of batteries.
- Risk of product damage! When the remote control is not used for long periods, remove the batteries.
- Perchlorate Material - special handling may apply. See www.dtsc.ca.gov/hazardouswaste/perchlorate.
- Risco de explosão! Mantenha a bateria distante do calor, luz do sol ou fogo. Nunca incinere a bateria.
- Risco de diminuição da vida útil da bateria! Nunca misture diferentes marcas ou tipos de bateria.
- Risco de danos ao produto! Quando o controle remoto não for usado por um longo período, remova a bateria.
- Material em perclorato — pode ser necessário tratamento especial. Consulte www.dtsc.ca.gov/hazardouswaste/perchlorate.



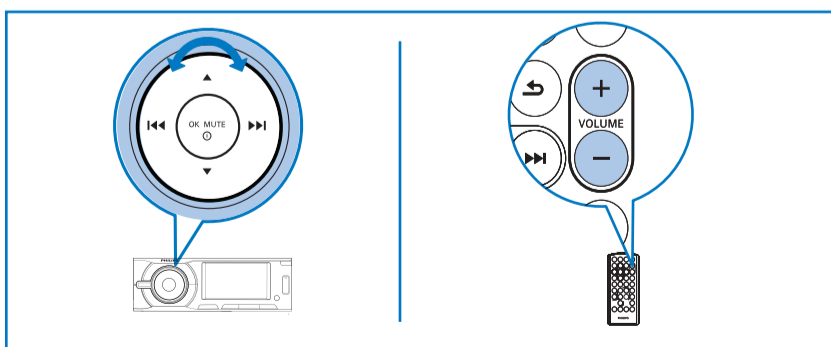
1



Turn on: Press OK/MUTE to turn on.
Turn off: Press and hold the same button for 3 seconds to turn off.

Ligar: para ligar, pressione OK/MUTE .
Desligar: para desligar, mantenha o mesmo botão pressionado por três segundos.

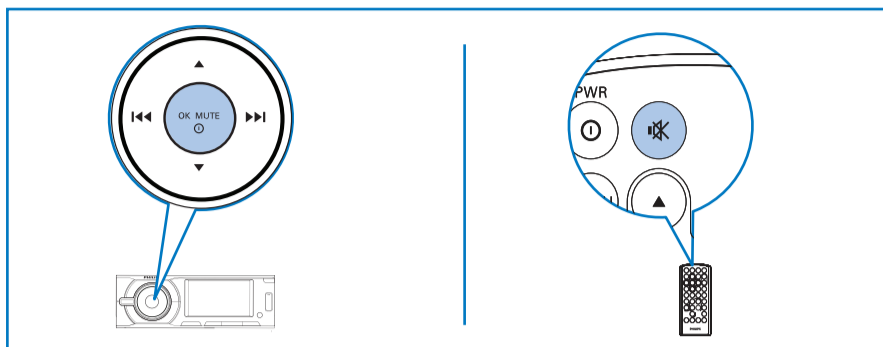
2



Adjust volume: Turn the control knob of the unit or press + or - of the remote control.

Ajustar o volume: gire o botão de controle da unidade ou pressione +/- no controle remoto.

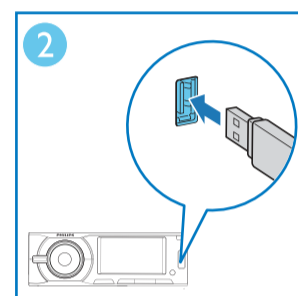
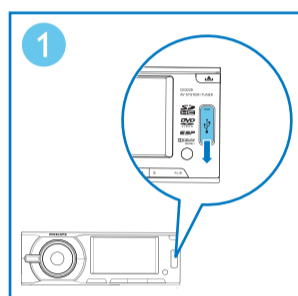
3



Mute volume: Press OK/MUTE on the unit or of the remote control to mute the sound.

Desativar o som: para desativar o som, pressione OK/MUTE na unidade ou no controle remoto.

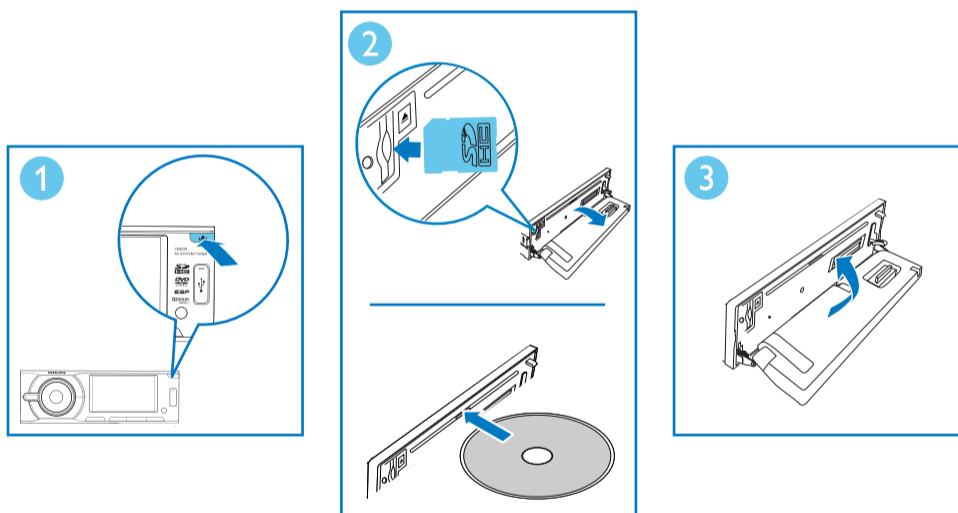
4



Insert USB device:
1. Slide down the USB socket cover.
2. Then, insert the USB device into the USB socket.

Inserir um dispositivo USB:
1. Deslize a tampa da entrada USB para baixo.
2. Insira o dispositivo USB na entrada USB.

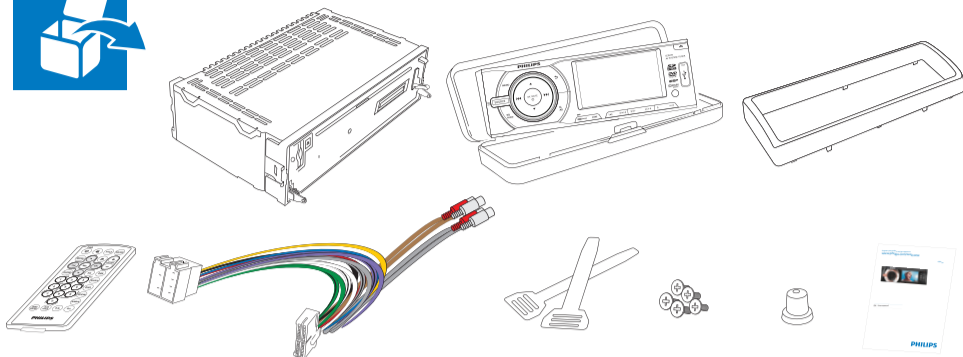
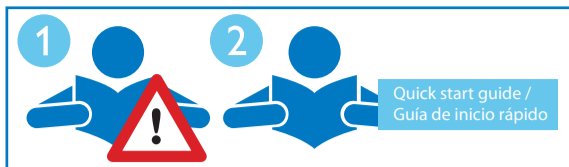
5



Insert SD/SDHC card or CD:
1. Press to open the front panel.
2. Insert the SD/SDHC card into the card slot, or CD into the disc slot.
3. Flip and close the front panel.

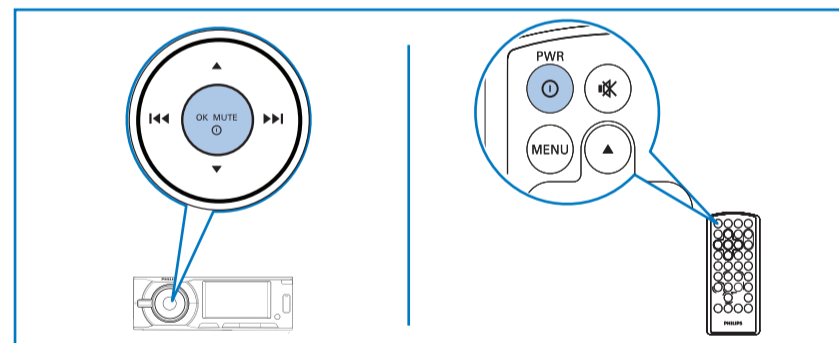
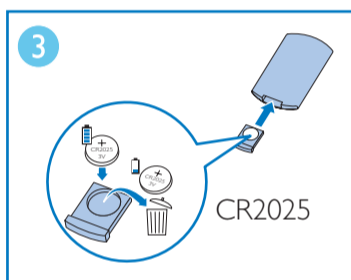
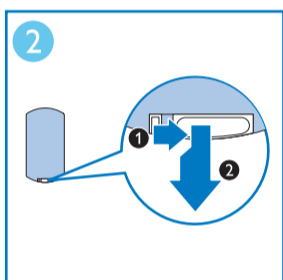
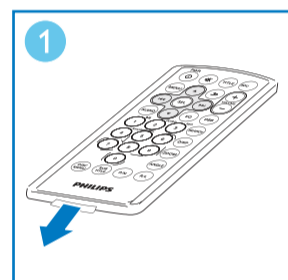
Inserir o CD ou cartão SD/SDHC:
1. Pressione para abrir o painel frontal.
2. Insira o cartão SD/SDHC ou o CD no respectivo slot.
3. Feche o painel frontal.

Quick start guide / Guía de inicio rápido CED229/55 , CED229/56



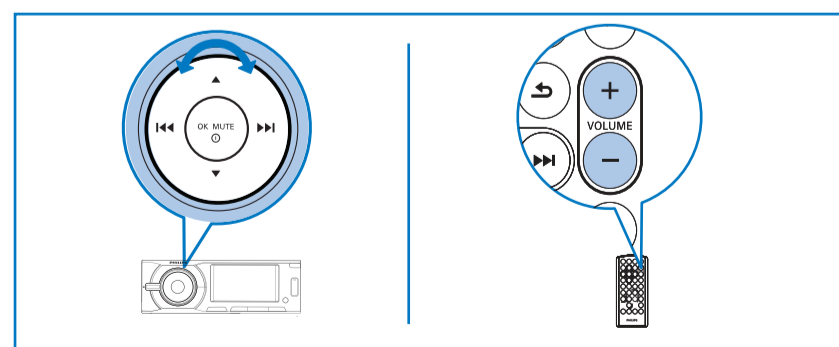
Caution / Precaución

- Risk of explosion! Keep batteries away from heat, sunshine or fire. Never discard batteries in fire.
- Risk of decreased battery life! Never mix different brands or types of batteries.
- Risk of product damage! When the remote control is not used for long periods, remove the batteries.
- Perchlorate Material - special handling may apply. See www.dtsc.ca.gov/hazardouswaste/perchlorate.
- Riesgo de explosiones. Mantenga las baterías alejadas de fuentes de calor, la luz solar o el fuego. Nunca arroje las baterías al fuego.
- Riesgo de disminución de la vida útil de la batería. Nunca mezcle baterías de diferentes marcas o tipos.
- Riesgo de daños al producto. Cuando no use el control remoto por un período prolongado, extraiga las baterías.
- Contiene perclorato: puede requerir un manejo especial. Consulte www.dtsc.ca.gov/hazardouswaste/perchlorate.



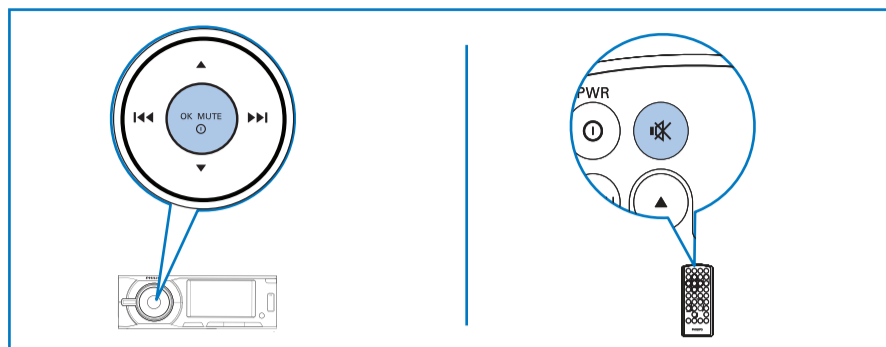
Turn on: Press OK/MUTE to turn on.
Turn off: Press and hold the same button for 3 seconds to turn off.

Encendido: pulse OK/MUTE para encender.
Apagado: mantenga pulsado el mismo botón durante 3 segundos para apagar.



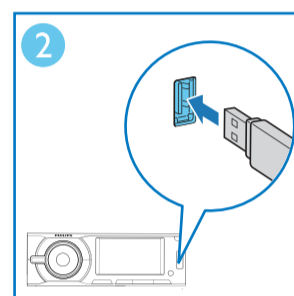
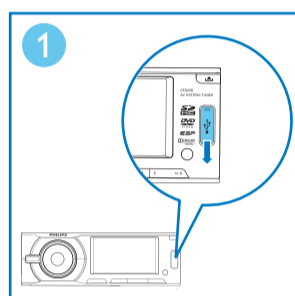
Adjust volume: Turn the control knob of the unit or press + or - of the remote control.

Ajuste de volumen: gire la perilla de control de la unidad o pulse + o - en el control remoto.



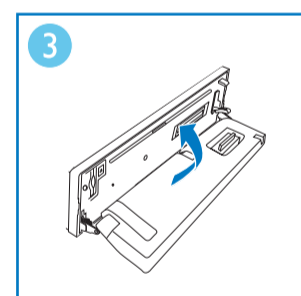
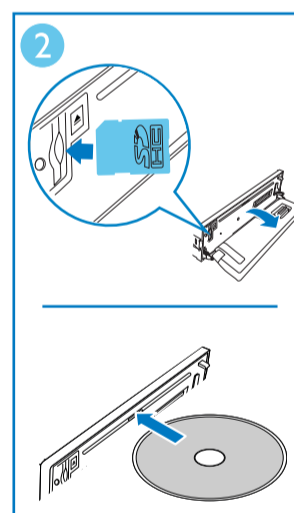
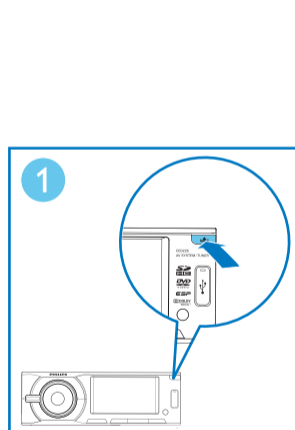
Mute volume: Press OK/MUTE on the unit or of the remote control to mute the sound.

Desactivación del volumen: pulse OK/MUTE en la unidad o en el control remoto para silenciar el sonido.



Insert USB device:
1. Slide down the USB socket cover.
2. Then, insert the USB device into the USB socket.

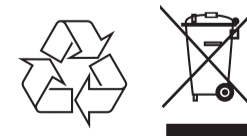
Introduzca un dispositivo USB:
1. Deslice hacia abajo la cubierta de la toma USB.
2. A continuación, introduzca el dispositivo USB en la toma USB.



Insert SD/SDHC card or CD:
1. Press to open the front panel.
2. Insert the SD/SDHC card into the card slot, or CD into the disc slot.
3. Flip and close the front panel.

Introduzca una tarjeta SD / SDHC o CD:
1. Pulse para abrir el panel frontal.
2. Introduzca la tarjeta SD / SDHC o el CD en las ranuras correspondientes.
3. Gire y cierre el panel frontal.

Be responsible
Respect copyrights



All rights reserved.
www.philips.com
Specification are subject to change without notice.
Trademarks are the property of Koninklijke Philips Electronics N.V. or their respective owners.
© 2011 Koninklijke Philips Electronics N.V.