

Always there to help you
Register your product and get support at
www.philips.com/Support



Quick start guide

PHILIPS

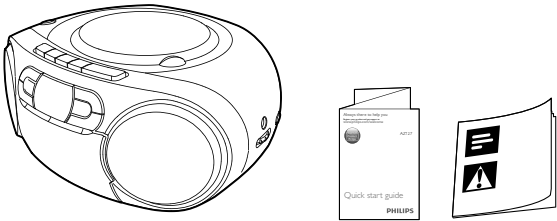


2016 © Gibson Innovations Limited. All rights reserved.
This product has been manufactured by, and is sold under the responsibility of Gibson Innovations Ltd., and Gibson Innovations Ltd. is the warrantor in relation to this product.
Philips and the Philips Shield Emblem are registered trademarks of Koninklijke Philips N.V. and are used under license.

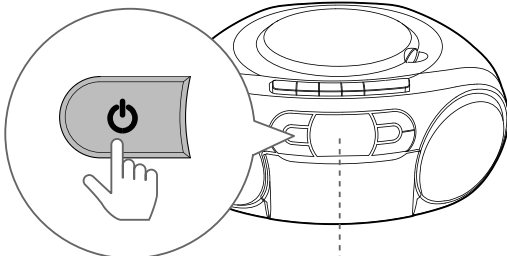
AZ127_73_QSG_V4.0



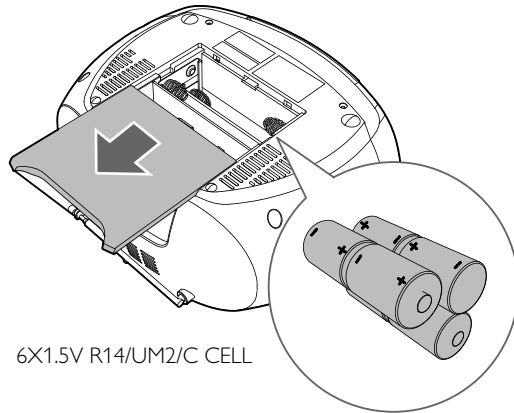
AZ127/73



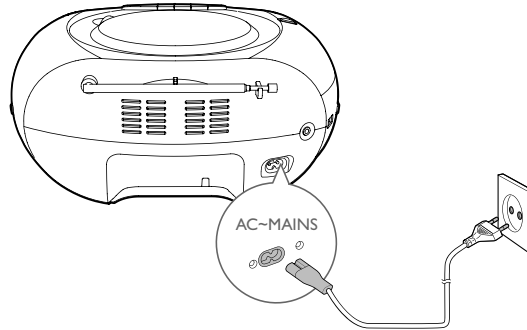
Before using your product, read all accompanying safety information.



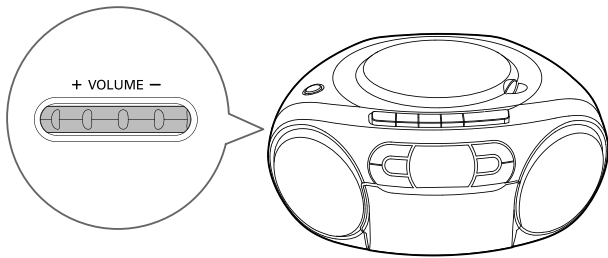
* In CD/FM/AUDIO IN mode, press to power on the device.
* There is no message shown on the display panel in FM or TAPE mode.
* In CD mode, the device switches to standby mode automatically if there is no playback for over 15 minutes.



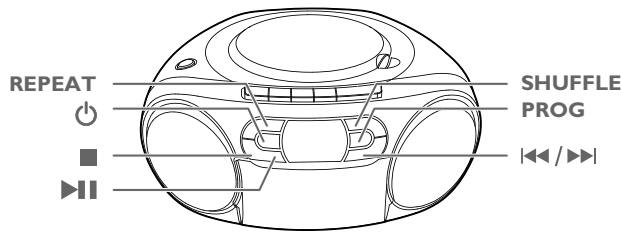
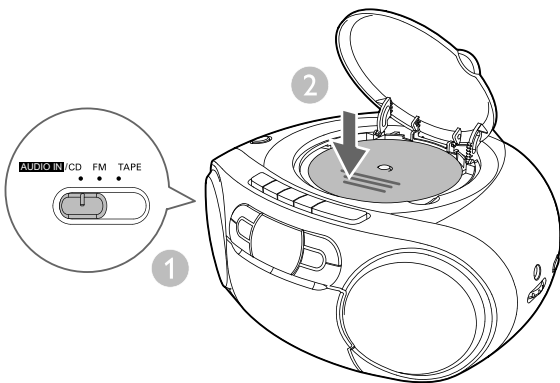
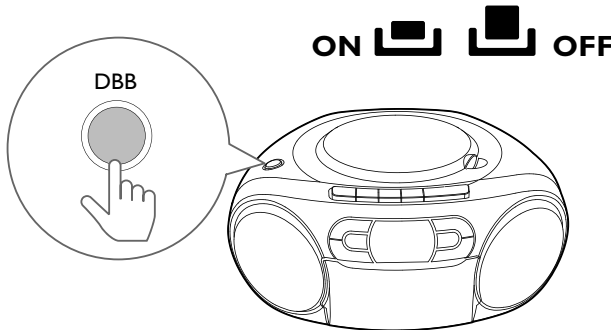
6X1.5V R14/UM2/C CELL



To play with the device, you can use either alkaline battery (R14) or AC power.



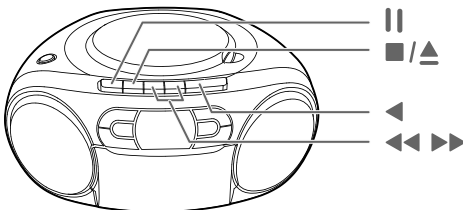
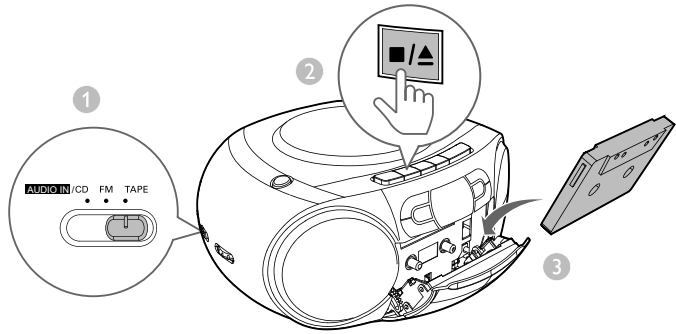
DBB



REPEAT	Play a track or all tracks repeatedly.
	Turn on/off the unit.
	Stop play or erase a program.
	Pause or start play.
SHUFFLE	Play tracks randomly.
PROG	Program the play sequence of tracks.
	Skip to the previous/next track or search within play.

Program tracks

- 1 In CD mode, press to stop playback.
- 2 Press **PROG** to activate programming.
- 3 Press repeatedly to select a track, then press **PROG** to confirm.
- 4 Repeat steps 3 to program more tracks.
- 5 Press to play the programmed tracks.
- 6 To cancel the program, press twice.



	Pause.
	Press to open the tape door.
	Start to play.
	Search within play.

Make sure that all the buttons are ejected when you close the tape door with a tape inside.

