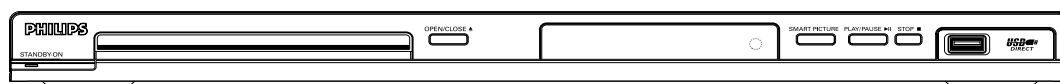


Quick Start Guide

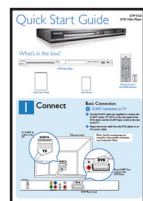
DVP 5160
DVD Video Player



What's in the box?



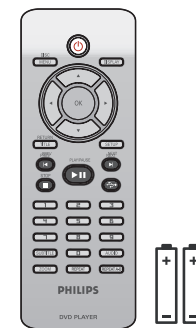
DVD Video Player



Quick Start Guide



User Manual



Remote Control
and 2 AAA batteries

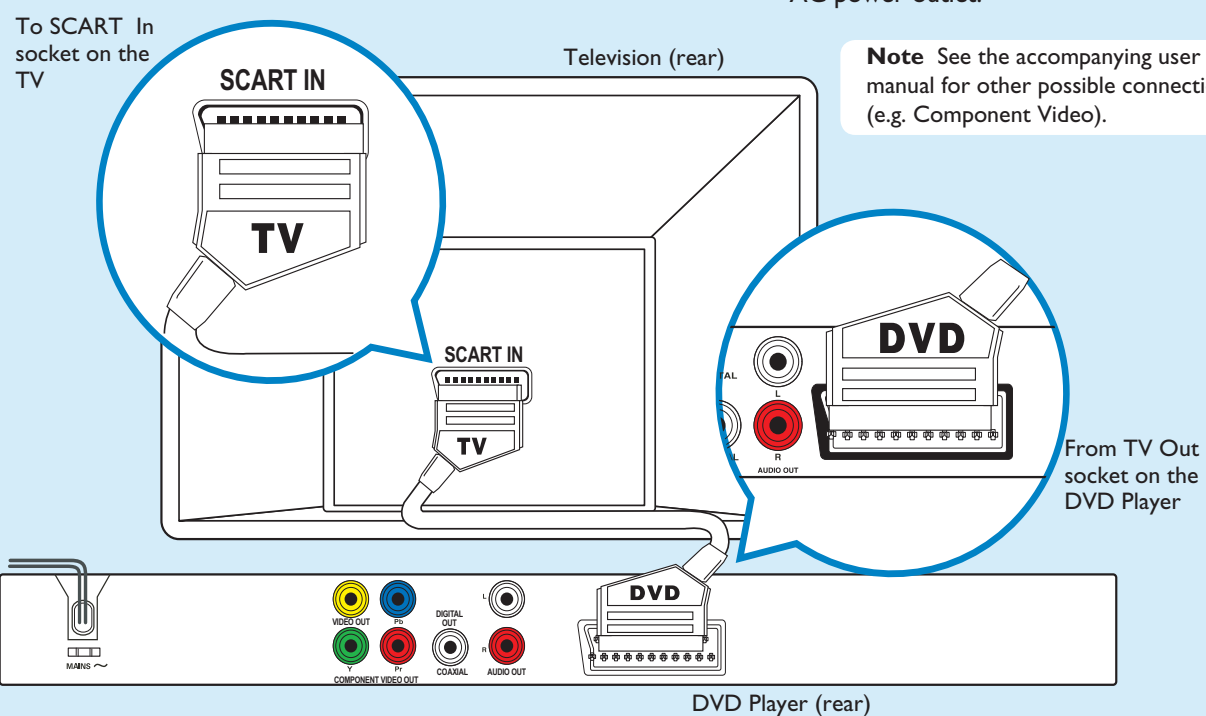
I Connect

Basic Connection

A SCART connection to TV

- 1 Use the SCART cable (not supplied) to connect the SCART socket (TV OUT) on the rear panel of the DVD player and the SCART input socket at the rear of the TV.
- 2 Plug in the power cable from the DVD player to an AC power outlet.

Note See the accompanying user manual for other possible connections (e.g. Component Video).



2 Set up

A Finding the viewing channel

- 1 Press **⏻** on the DVD player's remote control.
- 2 Switch on the TV.
 - The DVD background appears on the TV screen.
- 3 Press '0' on the TV's remote control, then repeatedly press the Channel Down button until you see the DVD background screen. This is the correct viewing channel for the DVD player.

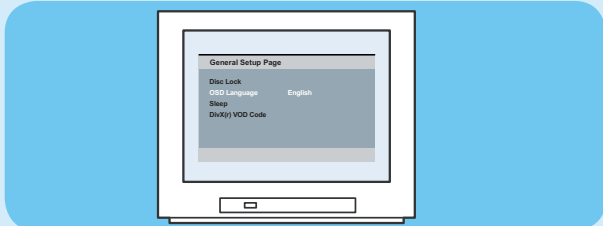
Note For some TVs, to find the correct viewing channel, you can keep pressing the AV or SELECT buttons. If still unable to find the correct viewing channel, check the connections again or check your TV's user manual.

B Language preference setup

Use the DVD player's remote control to select the desired On-screen language, Audio language, Subtitle language and Menu language you preferred.

Selecting On-screen language

- 1 Press **SETUP** on the DVD player's remote control.
- 2 Press **▼** to highlight {OSD Language}, then press **▶**.



- 3 Press **▲ ▼** to select a language and press **OK**.

Note The On-screen language for the setup menu will remain once you set it, regardless of various disc languages.

3 Enjoy

A Start playback

- 1 Playback may start automatically when a disc has been loaded in the disc tray.

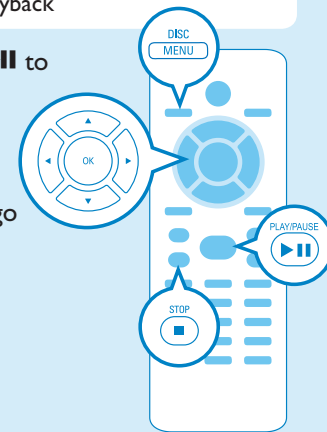
Note If a disc menu appears on the TV:

- 1) Press **▲ ▼ ◀ ▶** to scroll through the options available in the DVD menu.
- 2) Press **PLAY/PAUSE ▶||** on the option you want to start playback

- 2 Press **PLAY/PAUSE ▶||** to start playback.

- 3 To stop playback, press **STOP ■**.

- 4 Press **DISC MENU** to go back to the disc menu anytime.



Troubleshooting

For more troubleshooting tips, see the user manual.

No power

- Check if the AC power cord is properly connected.
- Press the STANDBY-ON on the front of the DVD player to turn on the power.

No picture

- Check connection to TV and ensure the plugs are firmly in place.

No sound or distorted sound

- Adjust the volume
- Check audio connections are in the correct input source.

Remote control does not work

- Check the batteries are loaded correctly or replace the batteries with new ones.
- Reduce the distance between the remote control and the DVD player.
- Point the remote control directly toward the IR sensor.

Need help?

User Manual

For more product information refer to the user manual of the DVD player

Online

Go to www.philips.com/welcome



2005 © Koninklijke Philips N.V.
All rights reserved.
www.philips.com
SL/0711/05_1_RC2