

Register your product and get support at
www.philips.com/welcome

Wireless HiFi Headphone

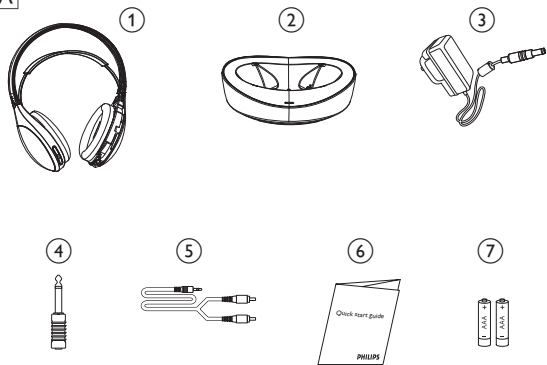
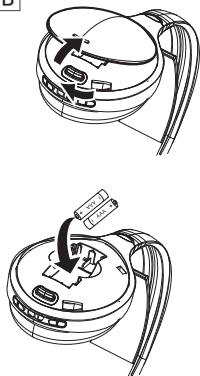
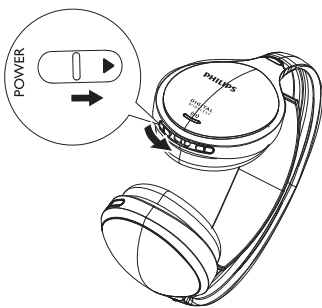
SHD8600

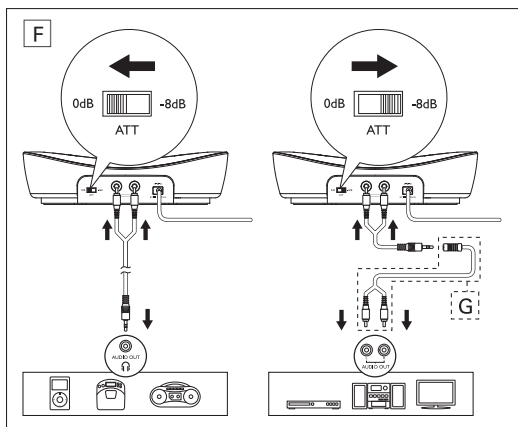
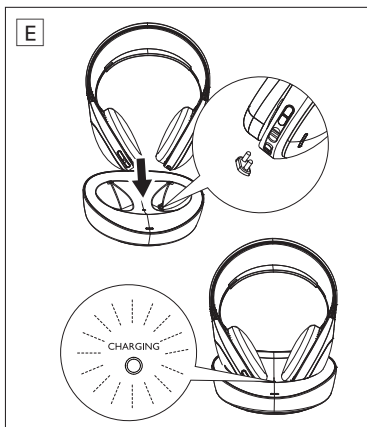
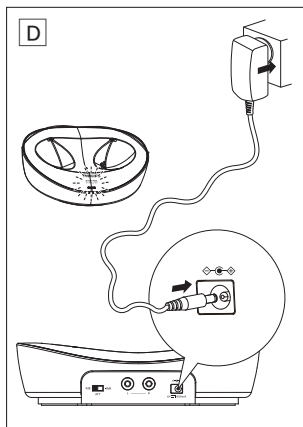


EN

Quick start guide

PHILIPS

A**B****C**



1 What's in the box (Fig.A)

1) Headphones	2) Docking station
3) AC/DC adaptor	4) 3.5 - 6.3mm adaptor
5) RCA to 3.5mm audio cable	6) Quick start guide
7) 2 x AAA rechargeable NiMH batteries (SBC HB700)	

2 Get Started

Note

- Before using the headphones for the first time, charge the supplied batteries for at least 4 hours.
- If the volume of the audio source is insufficient, the transmitter automatically turns off.
- The energizing docking station does not transmit audio signal during charge.

1 Install/Replace supplied batteries (Fig. B).

2 Power on/off the headphones (Fig. C)

3 Power on the transmitter (Fig. D).

- Charge the headphones (Fig. E).

4 Connect audio and adjust ATT (Attenuation of audio input signal) (Fig. F).

- For portable CD player, MP3 player or other devices with 3.5mm triport socket output, switch **ATT** to **0dB**.
- For HiFi, TV, DVD player or other devices with RCA socket output, switch **ATT** to **-8dB**. (Fig. G: Jack to cinch connector, not supplied).
- For an audio device with a 6.3mm headphone output, use the supplied 3.5mm - 6.3mm stereo adaptor plug (Fig. A).

3 LED indication

Connection established	Blue LED on Transmitter & Headphones	On
Charging ($\leq 70\%$ full)	Green LED on Transmitter	Fast blinking
Charging ($> 70\%$ full)	Green LED on Transmitter	Slow blinking
Charging (100% full)	Green LED on Transmitter	On
Battery low	Blue LED on Headphones	Fast blinking
Searching	Blue LED on Headphones	Slow blinking

4 Sound indication

One "Beep"	Battery is low.
"Beep, Beep"	Battery goes out soon.
Alert "Beep"	Volume at max/min vol. level.

For further product support, please visit www.philips.com/welcome

5 Adaptor specification

Region	Adaptor type number	Input voltage	Output voltage	Input frequency
China	SCV-005-050-055-A2	100-240V	5V 550mA	50/60Hz
HK	SBH-005-050-055-A2	100-240V	5V 550mA	50/60Hz
AUS & NZ	SSH-005-050-055-A2	100-240V	5V 550mA	50/60Hz

6 Important

Hearing Safety



Danger

- To avoid hearing damage, limit the time you use the headphones at high volume and set the volume to a safe level. The louder the volume, the shorter is the safe listening time.

Be sure to observe the following guidelines when using your headphones.

- Listen at reasonable volumes for reasonable periods of time.
- Be careful not to adjust the volume continuously upwards as your hearing adapts.
- Do not turn up the volume so high that you can't hear what's around you.
- You should use caution or temporarily discontinue use in potentially hazardous situations.
- Excessive sound pressure from earphones and headphones can cause hearing loss.

Electric-, Magnetic- and Electromagnetic Fields (EMF)

1. Royal Philips Electronics manufactures and sells many products targeted at consumers, which, like any electronic apparatus, in general have the ability to emit and receive electromagnetic signals.
2. One of Philips' leading Business Principles is to take all necessary health and safety measures for our products, to comply with all applicable legal requirements and to stay well within the EMF standards applicable at the time of producing products.
3. Philips is committed to develop, produce and market products that cause no adverse health effects.
4. Philips confirms that if its products are handled properly for their intended use, they are safe to use according to scientific evidence available today.
5. Philips plays an active role in the development of international EMF and safety standards, enabling Philips to anticipate further developments in standardization for early integration in its products.

General information

- **To prevent fire or shock hazard:** Always keep this product dry. Do not expose it to excessive heat by heating equipment or direct sunlight.
- No naked flame sources, such as lighted candles, should be placed on the apparatus.
- Do not allow your headset to be submerged in water.
- **To clean the product:** Use a slightly dampened chamois cloth. Do not use cleansing agents containing alcohol, spirits, ammonia or abrasives as they may harm the product.
- Do not disassemble the product.
- Transmission range: 15 meters, depending on ambient conditions.
- Do not operate or store the product in a place where temperature is below 0°C (32°F) or above 40°C (104°F) as this may shorten the battery life.
- Apparatus shall not be exposed to dripping or splashing.
- The mains plug of AC/DC adaptor is used as the disconnect device, the disconnect device shall be readily operable.
- Only use Philips' rechargeable shortened sleeve NiMH batteries with your headphones.
- Other types of rechargeable or alkaline batteries cannot be charged with this system.
- AAA alkaline batteries can be used to operate the headphones.
- Batteries (battery pack or batteries installed) shall not be exposed to excessive heat such as sunshine, fire or the like.

Disposal of your old product

Your product is designed and manufactured with high quality materials and components, which can be recycled and reused.

When this crossed-out wheeled bin symbol is attached to a product it means that the product is covered by the European Directive 2002/96/EC.



Please inform yourself about the local separate collection system for electrical and electronic products.

Please act according to your local rules and do not dispose of your old products with your normal household waste. Correct disposal of your old product helps to prevent potential negative consequences for the environment and human health.

Your product contains batteries covered by the European Directive 2006/66/EC, which cannot be disposed with normal household waste.

Please inform yourself about the local rules on separate collection of batteries because correct disposal helps to prevent negative consequences for the environmental and human health.

Attention should be drawn to the environmental aspects of battery disposal.

Notice for the European Union

Hereby, Philips Consumer Lifestyle, BU P&A, declares that this Philips digital wireless headset SHD8600 is in compliance with the essential requirements and other relevant provisions of Directive 1999/5/EC.

This product has been designed, tested and manufactured according to the European R&TTE Directive 1999/5/EC.





© 2010 Koninklijke Philips Electronics N.V.
All rights reserved.

Specifications are subject to change without notice.
Trademarks are the property of Koninklijke Philips Electronics N.V.
or their respective owners.

SHD8600_93_QSG_V1.1

