

Always there to help you

Register your product and get support at www.philips.com/welcome

AEA2700

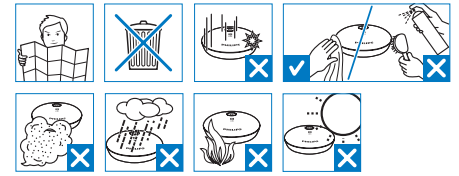


Safety

Read these instructions. Follow all instructions. Do not use this apparatus near water. Do not place near any heat sources such as radiators, heat registers, stoves, or other apparatus (including amplifiers) that produce heat. Protect the power cord from being walked on or pinched, particularly at plugs, convenience receptacles, and the point where they exit from the apparatus. Only use attachments/accessories specified by the manufacturer. Use only power supplies listed in the user manual. The product shall not be exposed to dripping or splashing. Do not place any sources of danger on the product (e.g. liquid filled objects, lighted candles). Where the plug of the Direct Plug-in Adapter is used as the disconnect device, the disconnect device shall remain readily operable.

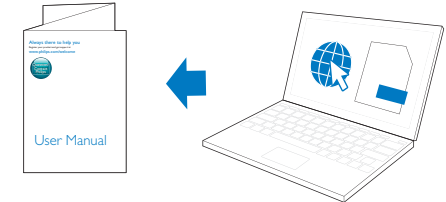
Warning

- Never remove the casing of this apparatus.
- Never lubricate any part of this apparatus.
- Never place this apparatus on other electrical equipment.
- Keep this apparatus away from direct sunlight, naked flames or heat.
- Ensure that you always have easy access to the power cord, plug or adaptor to disconnect the apparatus from the power.



Short User Manual

PHILIPS



To download the full user manual, visit www.philips.com/support.

Bluetooth indicator

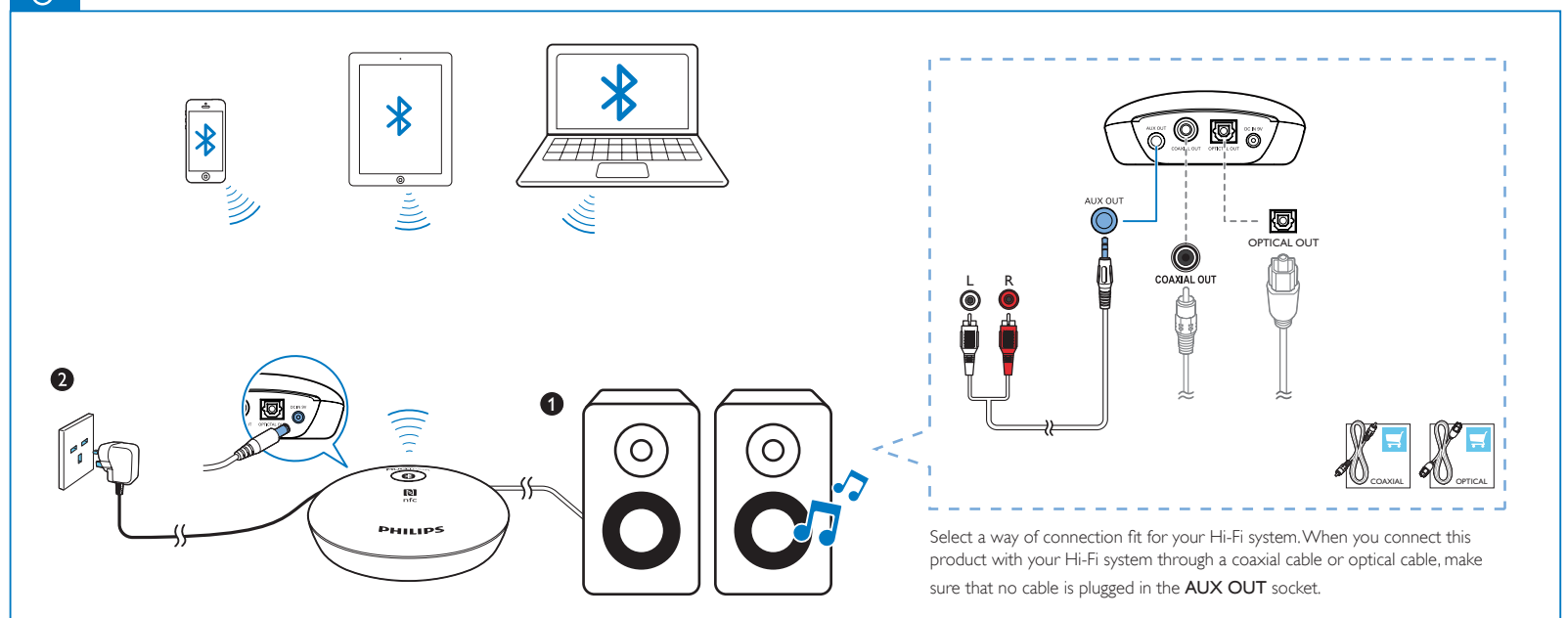
The LED Bluetooth indicator in the button indicates the status of Bluetooth connection.

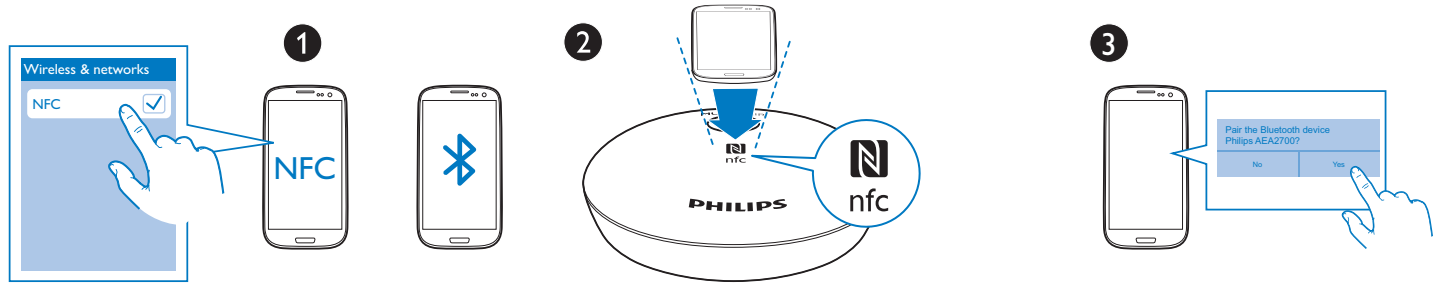
Indicator	Bluetooth connection
Blinking blue in 1 Hz	Connecting with a paired device
Blinking blue in 4 Hz	Waiting for pairing
Solid blue	Connected
Dim light	Disconnected

- The product can connect a maximum of 3 Bluetooth devices simultaneously. If you try to connect a fourth device with this product, an idle device that is connected earlier will be disconnected.
- If Bluetooth pairing fails in 15 minutes, this product exits the pairing mode.
- The operational range between this product and a Bluetooth device is approximately 10 meters (33 feet). If the distance exceeds the range for 15 minutes, the product enters standby mode.
- When another Bluetooth device starts streaming audio to this product, the audio play is paused on the current Bluetooth device. For some connected Android-powered devices, system or application sounds may pause audio play on the current device. To reduce such interruption, mute all other system and application sounds on connected Android-powered devices.
- When an incoming call is received on your mobile phone during audio play, the audio play is paused.
- You can press and hold for 5 seconds to clear the pairing history.

2014 © WOOX Innovations Limited. All rights reserved. Philips and the Philips' Shield Emblem are registered trademarks of Koninklijke Philips N.V. and are used by WOOX Innovations Limited under license from Koninklijke Philips N.V.

AEA2700_05_Short User Manual_V1.0

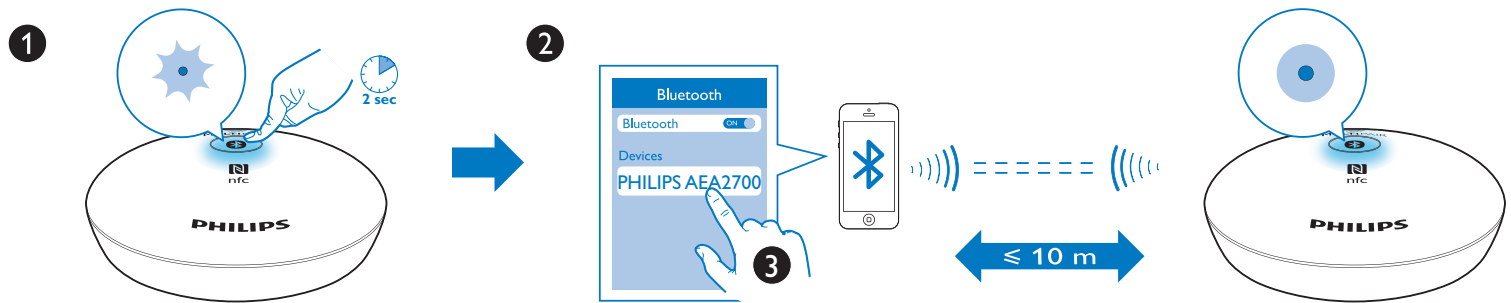




Connect easily by NFC

If your Bluetooth device supports NFC (Near Field Communication), you can connect it with this product easily.

- 1 On your device, enable NFC and Bluetooth functions.
- 2 Tap the back of your Bluetooth device at the NFC tag on this product.
- 3 On your Bluetooth device, follow the on-screen instructions to complete the pairing and connection.
 - To connect the fourth device, press and hold for 2 seconds to activate the pairing, and then follow the steps above to complete the pairing and connection.
 - To disconnect the current device, tap its back at the NFC tag on this product, or disable its Bluetooth function.



Connect manually

- 1 Press and hold for 2 seconds to switch this Bluetooth adapter to pairing mode.
 - ↳ The Bluetooth indicator in the button blinks in 4 Hz.
- 2 On your Bluetooth device, enable the Bluetooth feature and search for devices.
- 3 In the device list, select **PHILIPS AEA2700**.
 - If a message prompts for the permission for Bluetooth connection with **PHILIPS AEA2700**, confirm it.
 - If a password is required, enter **0000** and then confirm.
 - To disconnect the current device, disable its Bluetooth function.



Amplifier

Output Voltage	1000 mV RMS
Frequency response	20 Hz - 20 kHz, ±3 dB
Signal to Noise Ratio	> 62 dB
Total Harmonic Distortion	< 1 %

Bluetooth

Standard	Bluetooth Standard Version 3.0
Frequency Band	2.402~2.480 GHzISM Band
Range	10m (free space)

General information

AC Power	Model: AS030-090-EI033 (Philips) Input: 100-240 V ~, 50/60 Hz, 0.15 A Output: 9 V = 0.33 A
Operation Power Consumption	< 3 W
Standby Power Consumption	< 0.5 W
Dimensions - Main Unit (W x H x D)	74 x 28 x 72 mm
Weight - Main Unit	0.04 kg

Notice

Any changes or modifications made to this device that are not expressly approved by WOOX Innovations may void the user's authority to operate the equipment.

Compliance

This product complies with the radio interference requirements of the European Community. **CE 0890**
Hereby, WOOX Innovations declares that this product is in compliance with the essential requirements and other relevant provisions of Directive 1999/5/EC. You can find the Declaration of Conformity on www.philips.com/support.

Care of the environment

Your product is designed and manufactured with high quality materials and components, which can be recycled and reused. When this crossed-out wheeled bin symbol is attached to a product it means that the product is covered by the European Directive 2002/96/EC. Please inform yourself about the local separate collection system for electrical and electronic products. Please act according to your local rules and do not dispose of your old products with your normal household waste. Correct disposal of your old product helps to prevent potential negative consequences for the environment and human health.

Environmental information

All unnecessary packaging has been omitted. We have tried to make the packaging easy to separate into three materials: cardboard (box), polystyrene foam (buffer) and polyethylene (bags, protective foam sheet).

Your system consists of materials which can be recycled and reused if disassembled by a specialized company. Please observe the local regulations regarding the disposal of packaging materials, exhausted batteries and old equipment.

Trademark notice

The Bluetooth® word mark and logos are registered trademarks owned by Bluetooth SIG, Inc. and any use of such marks by WOOX Innovations is under license.

The N Mark is a trademark or registered trademark of NFC Forum, Inc. in the United States and in other countries.



Copyright

2014 © WOOX Innovations Limited. All rights reserved. Philips and the Philips' Shield Emblem are registered trademarks of Koninklijke Philips N.V. and are used by WOOX Innovations Limited under license from Koninklijke Philips N.V. Specifications are subject to change without notice. WOOX reserves the right to change products at any time without being obliged to adjust earlier supplies accordingly.