



Need help?

Country	Telephone number
België/Belgique/Belgien (Belgium)	☎ 070 222303
Danmark (Denmark)	☎ 35-25-8759
Deutschland (Germany)	☎ 0180 536767
Espana (Spain)	☎ 902 888 784
France	☎ 08 09165 0005
Ελλάδα (Greece)	☎ 0 0800 3122 1280
Italia (Italy)	☎ 899 23 45 06
Luxembourg (Luxemburg)	☎ 40 6661 5644
Nederland (Netherlands)	☎ 0900 8407
Norge (Norway)	☎ 2270-8111
Österreich (Austria)	☎ 0810 001 203
Portugal	☎ 2 1359 1442
Schweiz/Suisse/Svizzera (Switzerland)	☎ 0844 800 544
Suomi (Finland)	☎ 09 6158 0250
Sverige (Sweden)	☎ 08 5792 9100
United Kingdom	☎ 0906 1010 016
U.S.A. (United States of America)	☎ 1-866-892-4765

If your country is not mentioned in the list above, please check our website:

www.philips.com/support

for additional information.

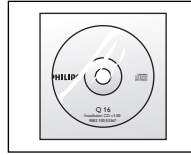
What's in the box?

EN

Please check that the following items are packed in the Philips SPC 610NC box. They are provided to help you set up and use your Philips SPC 610NC.



*Philips SPC 610NC
laptop camera*

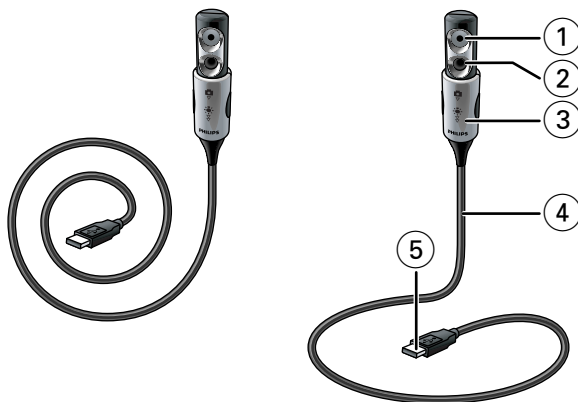


*Installation CD-ROM
including manual*



*Quick Installation
Guide*

Legend of functions



1 Web camera lens

2 Front light / keyboard light

- Illuminates the keyboard.
- Illuminates your face when video chatting under poor lighting conditions.

3 Lens cover / light switch

- Protects the lens when the camera is not in use.
- Activates the camera (📷): one click downwards (▽).
- Switches the front light / keyboard light (💡) on: two clicks downwards (▽▽).

Note: The camera only functions when the applications are started up. See chapter 'Using the applications'.

4 Flexible neck

Allows you to direct the camera in any desired position.

5 USB connector

Connects the camera to the USB port of your laptop or notebook.

The camera will derive its power from the laptop or notebook when it is connected.

2 Need help?

3 What's in the box?

4 Legend of functions

5 Contents

6 Welcome

7 Things you should know

7 Safety precautions

7 Copyright

8 Installation

8 Installing the camera software

11 Camera settings

11 General controls

12 Picture controls

15 Using the applications

15 VLounge

15 MSN Messenger

16 Yahoo! Messenger

16 AOL Instant Messenger

17 Microsoft NetMeeting

18 Making snapshots using Windows® XP

19 Technical specifications

20 Important information

20 Disclaimer

20 FCC compliance

21 Environmental information

21 System requirements

21 Disclaimer of warranty

21 Limitations of damages

22 Warranty

Welcome

The Philips SPC 610NC laptop camera you have just purchased is manufactured to the highest standards and will give you years of trouble-free use. Brilliant images and blazing colours, that's what you get with the SPC 610NC laptop camera.

Forget about installing interface cards and separate power supplies, because you don't need them any more. Power is supplied direct to the camera through the USB cable and the camera returns video straight to your laptop or notebook!

After installation, the new camera can be used for all sorts of applications, such as:

- **Front light / keyboard light:** switch on the front light / keyboard light to illuminate the keyboard or your face when you are working or video chatting under poor lighting conditions;
- **Video conferencing:** use the Philips SPC 610NC laptop camera for video chatting and conferencing (the Philips SPC 610NC laptop camera works with MSN Messenger, Yahoo! Messenger, AOL Messenger, Windows NetMeeting and Windows Messenger);
- **Video e-mail / Video capture:** create your own video presentations, video mail, product demonstrations, training videos, Internet clips etc.;
- **Snapshot images:** use images in presentations, create postcards, or send them via e-mail or on diskette. The camera works with all applications that use the TWAIN interface to acquire an image.
- **Editing and special effects:** after recording the images you want with the Philips SPC 610NC laptop camera, the images can be easily edited using image or video editing programs.

The following sections in this manual give a step-by-step description of the installation process and explain how to use the Philips SPC 610NC laptop camera.

Please read the following instructions carefully, and retain them for future reference. It may be helpful to have the instructions for use for the laptop or notebook at hand for reference.

Safety precautions

Observe the following guidelines to ensure that the camera will operate safely and to prevent defects.

- **Do not use your camera in environments outside the following range:** temperature: 0°C to 40°C, relative humidity: 45% ~ 85%.
- **Do not use or store your camera in/under:**
 - direct sunlight exposure;
 - very humid and dusty environment;
 - near any kind of heat sources;
- If your camera gets wet, dry it with soft cloth as soon as possible.
- If the lens is dirty **Do NOT** touch the lens with your fingers.
- Clean the outside of the camera with a soft cloth.
- **Do NOT** use cleaning fluids based on alcohol, methylated spirit, ammonia, etc.
- **Do NOT** attempt to disassemble or repair your camera by yourself. Do not open the camera. In the event of technical difficulties return it to your Philips retailer.
- **Do NOT** use your camera in the water.
- Protect the camera from oil, vapour, steam, moisture, and dust.
- **Never point the camera lens at the sun.**

Copyright

Copyright© 2003 by Philips Consumer Electronics B.V.

All rights reserved. No part of this publication may be reproduced, transmitted, transcribed, stored in a retrieval system or translated into any language or computer language, in any form or by any means, electronic, mechanical, magnetic, optical, chemical, manual or otherwise, without prior written permission from Philips. Brands and product names are trademarks or registered trademarks of their respective companies.

Installation

Installing the camera software

The software supplied only works on PCs and laptops with the operating systems Microsoft® Windows® 98SE, ME, 2000 and XP.

Notes!

- Unplug all your USB devices (except USB keyboard and USB mouse) before you start.
- Do not plug in your USB camera yet.
Run the Installation CD-ROM first.
- Have your Windows® CD-ROM at hand.



- 1 Place the installation CD-ROM in your laptop's CD-ROM-/DVD drive.



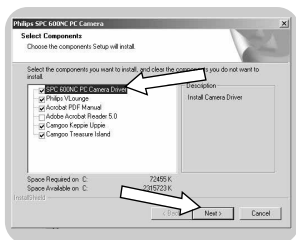
> After a couple of seconds the 'Language selection' screen appears automatically.

Note!

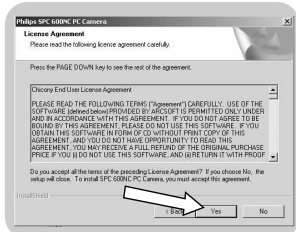
If the 'Language selection' screen does not appear automatically, open the Microsoft® Windows® Explorer and double click on the 'Set-up.exe' icon in the CD-ROM directory.

- 2 Select your language and click on the '**OK**' button.

> The following screen appears.

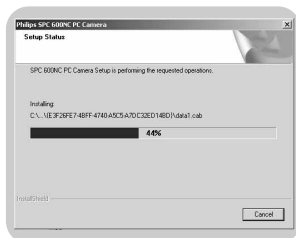


- 3 Select at least the 'SPC 610NC PC Camera Driver' and click on the '**Next**' button.

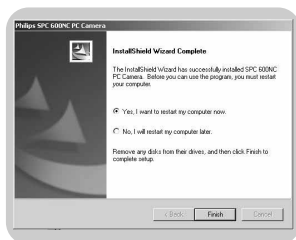


> The following software license agreement appears.

- 4 Click on '**Yes**' to continue the installation.



> The following screen, including a progress bar, appears.



> The following screen appears when the installation was successful.

5 Click on 'Finish'.

6 You can now connect your laptop camera.

Note!

The SPC 610NC laptop camera is 'XP Plug & Play'. This means if you are running Windows XP and you have installed Service Pack 2 and the latest Microsoft Windows XP updates you don't need to install the SPC 610NC PC Camera Driver. Simply plug in the camera and you can start using your SPC 610NC laptop camera.

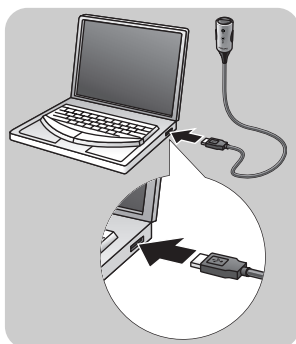
Connecting the camera to your laptop

1 Be sure to run the installation CD first, before connecting the camera to the laptop or notebook.

2 Be sure your laptop or notebook is activated.

3 Connect the USB connector to the USB port of the laptop.

> The camera will now derive its power from the laptop.



Installation

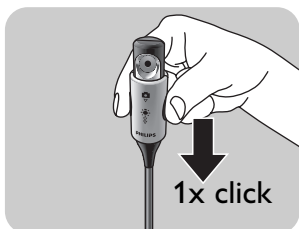
Putting the camera into operation mode

1 Bend the camera neck into the desired position.



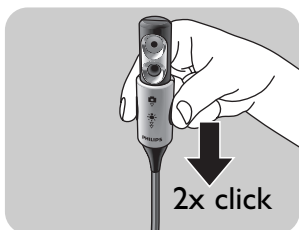
2 Switch on the camera (📷) by sliding the **lens cover** (light switch) one click downwards (▽).

> The camera is now in operation mode but will only function when the applications are started up.
See chapter 'Using the applications'.




• If desired you can switch on the front light / keyboard light (💡) by sliding the **light switch** (lens cover) one more click downwards (▽).

To switch off the front light / keyboard light (💡), slide the **light switch** (lens cover) one click upward.

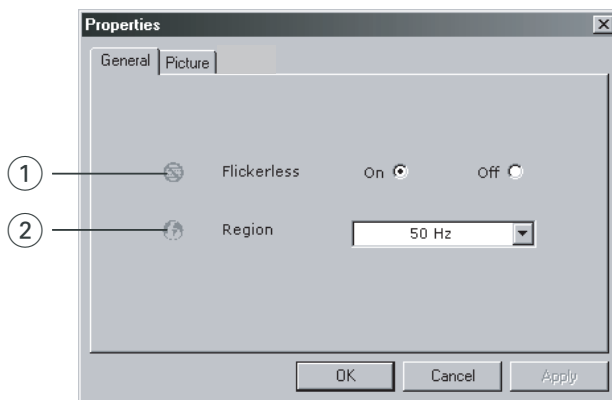


Notes!

- When using the camera be sure to slide the **lens cover** (light switch) at least one click downwards (▽).
- When the camera is not in use, be sure to slide the lens cover (light switch) all the way up (two clicks) to protect the lens.

The Philips SPC 610NC video property can be changed from within an application, or independently by clicking the VProperty icon  which can be found in the Windows taskbar bottom right of your screen. Most applications can show a 'live preview' video image on your monitor. Always use this option to see the effect of changed settings on your screen.

General controls



① Flickerless

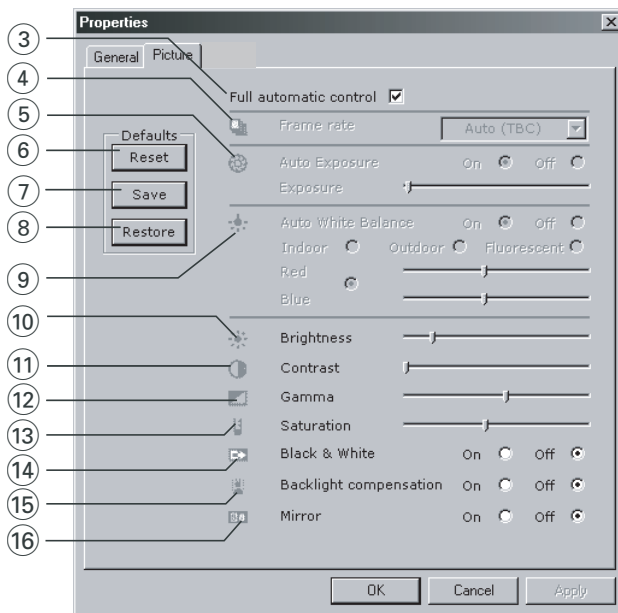
The Flickerless option should only be used under flickering light conditions (e.g. fluorescent or neon lamps) to prevent flickering or strangely coloured video images. If this option is used under normal lighting conditions the video image may be overexposed.

② Region

If you are using the Philips SPC 610NC in Europe, select '50 Hz' and if you are using the Philips SPC 610NC in North America, select '60 Hz'. For Asia this setting is dependent on the local mains output. E.g. for China, select '50 Hz' and for Taiwan, select '60Hz'. Please check your local mains output to find the correct 'Region' setting.

Camera settings

Picture controls



③ Full automatic control: on/off

This full automatic control mode provides a very easy way to get the best out of your Philips SPC 610NC laptop camera. Or you can choose to have maximum manual control over the camera settings by switching the full automatic control mode off. Full automatic control 'on' is the preferred setting for normal use.

Techniques active within full automatic control mode are:

- *Automatic exposure control* and automatic white balance control, to provide the best video source signal possible;
- *Automatic frame rate selection* for improved camera sensitivity in low light conditions.

④ Frame rate

You can use the scroll open menu to set the frame rate of the video you wish to capture. E.g. 30 fps means that the laptop camera will capture video at 30 frames per second.

⑤ **Auto Exposure & Exposure slider**

The exposure is the amount of light received by the sensor and is determined by how long the sensor is exposed to capture a snapshot or video frame. The result depends on the sensitivity of the sensor. The laptop camera will find the optimal setting if you select the automatic exposure option. You can use the exposure slider if you would like to set the camera according to your personal preferences.

⑥ **Reset**

Press this button if you would like to reset the camera settings to the default factory settings.

⑦ **Save**

Press this button if you would like to save your personal preferred settings.

⑧ **Restore**

Press this button if you would like to restore your personal preferred settings.

⑨ **Auto White Balance**

Most light sources are not 100% pure white but have a certain 'colour temperature'. Normally our eyes compensate for lighting conditions with different colour temperatures. If the automatic white balance is selected, the camera will search for an object which the camera knows the colour temperature of and will compensate all the other colours in the view of the camera accordingly.

You can also select the 'Indoor', 'Outdoor' and 'Fluorescence' options to provide the camera with more information to find the right setting. You can use the 'Red' and 'Blue' sliders if you would like to set the camera according to your personal preferences.

Camera settings

⑩ **Brightness**

Brightness enables you to adjust the brightness of the displayed image or video to suit your own preference. Use the slider to find your preferred setting.

⑪ **Contrast**

Contrast enables you to control the ratio between dark and light according to your own preference. Use the slider to find your preferred setting.

⑫ **Gamma**

Gamma enables you to brighten dark areas within the displayed image or video and visualize more details without over-exposing already light areas. Use the slider to find your preferred setting.

⑬ **Saturation**

Saturation enables you to set the colour reproduction from black and white to a full colour image or video according to your own preference. Use the slider to find your preferred setting.

⑭ **Black and white**

The 'Black and white' checkbox is used to switch from colour images to black and white and back.

⑮ **Backlight compensation**

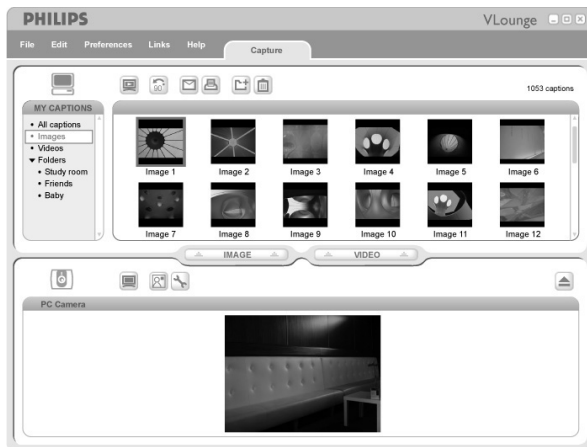
Turn on the backlight compensation to improve the image quality when you have a scene where the background has a high illumination level (for instance when you are sitting in front of a bright light).

⑯ **Mirror**

Clicking the 'Mirror Image' checkbox flips the image horizontally. You can use this feature when you want to use the Philips SPC 610NC and monitor as a mirror, or to take pictures of mirrored images.

VLounge

- Select VLounge in the software installation screen.



- For additional support read the 'Help' documentation within the 'Help' option of the menubar of VLounge.

MSN Messenger

You can download and install MSN Messenger via Microsoft MSN Messenger websites. In the list below you will find the website address for your country for downloading MSN Messenger:

Austria - <http://messenger.msn.at>
Belgium (Dutch) - <http://messenger.msn.be>
Belgium (French) - <http://messenger.fr.msn.be>
Denmark - <http://messenger.msn.dk>
Finland - <http://messenger.msn.fi>
France - <http://messenger.msn.fr>
Germany - <http://messenger.msn.de>
Italy - <http://messenger.msn.it>
The Netherlands - <http://messenger.msn.nl>
Norway - <http://messenger.msn.no>
Portugal - <http://messenger.msn.com>
Spain: - <http://messenger.msn.es>
Sweden - <http://messenger.msn.se>
Swiss (German) - <http://messenger.msn.ch>
Swiss (French) - <http://messenger.fr.msn.ch>
United Kingdom - <http://messenger.msn.co.uk>
USA - <http://messenger.msn.com>

Using the applications

Please follow the on-screen instructions during downloading and installation of MSN Messenger.



Yahoo! Messenger

You can download and install Yahoo! Messenger via Yahoo! Messenger websites. In the list below you will find the website address for your country for downloading Yahoo! Messenger:

Austria - <http://messenger.yahoo.com>
 Belgium - <http://messenger.yahoo.com>
 Denmark - <http://dk.messenger.yahoo.com/>
 Finland - <http://messenger.yahoo.com>
 France - <http://fr.messenger.yahoo.com/>
 Germany - <http://de.messenger.yahoo.com/>
 Italy - <http://it.messenger.yahoo.com/>
 The Netherlands - <http://messenger.yahoo.com>
 Norway - <http://no.messenger.yahoo.com/>
 Portugal - <http://messenger.yahoo.com>
 Spain - <http://es.messenger.yahoo.com/>
 Sweden - <http://se.messenger.yahoo.com/>
 Swiss - <http://messenger.yahoo.com>
 United Kingdom - <http://uk.messenger.yahoo.com>
 USA - <http://messenger.yahoo.com>

Please follow the on-screen instructions during downloading and installation of Yahoo! Messenger.



AOL Instant Messenger

You can download and install AOL Instant Messenger via the America Online website. Please find below the website address for downloading AOL Instant Messenger:



<http://www.aim.com/>

Please follow the on-screen instructions during downloading and installation of AOL Instant Messenger.



Microsoft NetMeeting

Microsoft NetMeeting is a standard application that comes with your Windows operating system (from Windows 98SE onwards). Windows NetMeeting is already installed on your laptop during the installation of your Windows operating system. To create a shortcut on your laptop's desktop you need to do the following:

- 1 Use the Windows search option within the Windows **'Start'** menu.
- 2 Search for **'NetMeeting'** on your C:\ drive.
- 3 The search utility will find the following:  NetMeeting .
- 4 Click on  NetMeeting using your right mouse button and select: **'Send To → Desktop'** (create shortcut)'.

To initiate a video chat:

- 1 Double click on the **'NetMeeting Shortcut'** on your PC's Desktop to start a NetMeeting session.
- 2 Click on **'Help' → 'About NetMeeting'** and find out your local IP address.
You can ask your meeting partner to find out his/her IP address in the same way.



- 3 Click the telephone icon.
- 4 In the **'Place A Call'** dialogue box, fill in your partner's IP address in **'To:'**.
- 5 Click on **'Call'** and wait for response.

Note!

If you or your partner are/is behind a firewall or is using a proxy server (common for office users), please refer to NetMeeting Help about detail solutions.

Using the applications

To respond to an incoming call:

- 1 You can choose '**Automatically Accept Calls**' or you can accept manually.
- 2 When the '**Incoming Call**' dialogue box appears, click on '**Accept**'.

Notes!

- Only two computers in a NetMeeting conference can use audio for communication. All other participants must communicate through other options, like Chat or the shared Whiteboard.
- You can also initiate a video conference with more than one partner. Please read Help in Microsoft® NetMeeting.

Making snapshots using Windows® XP

You can use Microsoft® Windows® XP to make snapshots with your Philips SPC 610NC laptop camera.

If you need additional support, please refer to the '**Help**' topics of Microsoft® Windows® XP. Search for '**Get picture**'.

Technical specifications

EN

Sensor	VGA CMOS
Video resolution (Max.).....	VGA (640 x 480)
Image resolution (Max.).....	VGA (640 x 480)
Illumination	< 5 lux
Integrated lens	F=2.8
Data format	I420, IYUV
Interfacing.....	USB 2.0 compatible (2.1m USB cable)
Power	Supplied via USB cable
Voltage requirements	5V (— — —), 0.5A
Front light illumination distance.....	1.5 m

Important information

Disclaimer

Philips makes no warranty of any kind with regard to this material, including, but not limited to, the implied warranties of merchantability and fitness for a particular purpose.

Philips assumes no responsibility for any error that may appear in this document. Philips makes no commitment to update nor to keep current the information contained in this document.

FCC compliance

This device complies with Part 15 of the FCC Rules.

Operation is subject to the following two conditions:

- 1 this device may not cause harmful interference, and
- 2 this device must accept any interference received, including interference that may cause undesired operation.

Note!

This equipment has been tested and found to comply with the limits for a Class B digital device, pursuant to Part 15 of the FCC Rules. These limits are designed to provide reasonable protection against harmful interference in a residential installation. This equipment generates, uses and can radiate radio frequency energy and, if not installed and used in accordance with the instructions, may cause harmful interference to radio communications. However, there is no guarantee that interference will not occur in a particular installation. If this equipment does cause harmful interference to radio or television reception, which can be determined by turning the equipment off and on, the user is encouraged to try to correct the interference by one or more of the following measures:

- *Reorient or relocate the receiving antenna.*
- *Increase the separation between the equipment and receiver.*
- *Connect the equipment to an outlet on a circuit different from that to which the receiver is connected.*
- *Consult the dealer or an experienced radio/TV technician for help.*

Any unauthorized modification to this equipment could result in the revocation of the authorization to operate the equipment.

Environmental information

Disposal of your old product

Your product is designed and manufactured with high quality materials and components, which can be recycled and reused.



When this crossed-out wheeled bin symbol is attached to a product it means the product is covered by the European Directive 2002/96/EC

Please inform yourself about the local separate collection system for electrical and electronic products.

Please act according to your local rules and do not dispose of your old products with your normal household waste. The correct disposal of your old product will help prevent potential negative consequences for the environment and human health.



WARNING

Plastic bags can be dangerous. To avoid danger of suffocation, keep this bag away from babies and small children.

System requirements

- Microsoft® Windows® 98SE/2000/ME or XP;
- Pentium® III, 500 Mhz or equivalent;
- 128MB RAM and 100 MB free hard disk space;
- One free USB port and CD-ROM or DVD drive.

Disclaimer of warranty

The software on the CD-ROM supplied is sold 'as is' and without warranties whether expressed or implied. Because of the various software and hardware environments into which this program may be put, no warranty of fitness for a particular purpose is offered.

Limitations of damages

The vendor will not be liable for any indirect, special, incidental or consequential damages (including damages for loss of business, loss of profits, or the like), whether based on breach of contract, tort (including negligence), product liability or otherwise, even if the vendor or its representatives have been advised of the possibility of such damages and even if a remedy set forth herein is found to have failed its essential purpose.

Warranty certificate
Garantiebewijs
Certificado de garantia
Garantibevís

Certificat de garantie
Certificado de garantia
Εγγύηση
Garantibevís

Garantieschein
Certificato di garanzia
Garanticertifikat
Takuutodistus

2

year warranty
année garantie
Jahr Garantie
jaar garantie
año garantia
anno garanzia

χρόνος εγγύηση
år garanti
år garanti
år garanti
vuosi takuu
año garantia

Type: **SPC610NC**

Serial nr: _____

Date of purchase - Date de la vente - Verkaufsdatum - Aankoopdatum - Fecha de compra - Date d'acquisto -
Data da aquisição - Ημερομηνία αγοράς - Inköpsdatum - Anskaffelsesdato - Kjøpedato - Oatopäivä -

Dealer's name, address and signature
Nom, adresse et signature du revendeur
Name, Anschrift und Unterschrift des Händlers
Naam, adres en handtekening v.d. handelaar
Nombre, dirección y firma del distribuidor
Nome, indirizzo e firma del fornitore

Όνοματεπώνυμο, διεύθυνση και υπογραφή του εμπ. προμηθευτή
Återförsäljarens namn, adress och signatur
Forhandlerens navn, adresse og underskrift
Forhandlerens navn, adresse og underskrift
Jälleenmyyjän nimi, osoite ja allekirjoitus
Nome, morada e assinatura da loja

Specifications are subject to change without notice.
Trademarks are the property of Koninklijke Philips Electronics N.V. or their respective owners.
2005 © Koninklijke Philips Electronics N.V. All rights reserved.

www.philips.com

CE 0682 ①