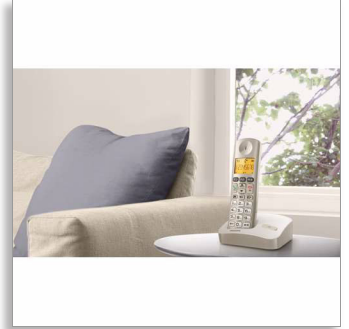




Philips Cordless phone

- XL300
- Champagne



XL300C



Comfortable and simple

With oversize features, extra loud sound and simplified menu this phone is reassuringly easy to use. Staying in touch has never been so effortless, thanks to instant dial memory keys, direct access phonebook and volume controls.

Smart, simple and easy to use

- Ultimate convenience through easy setup
- Large display and easy to read characters
- Direct volume control and phone book access on handset
- Instantly call your loved ones via speed-dial keys
- Textured back cover for non-slip grip
- Up to 16 hours talk time on a single charge

Hear everything loud and clear

- Hearing aid compatible - reduces unwanted noise
- Extra loud sound and ringer
- Handset speakerphone allows you to talk handsfree
- Optimized antenna layout for great reception in any room

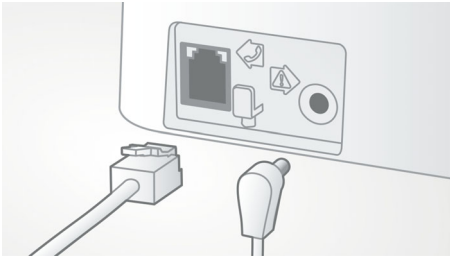
Eco-conscious product

- Low radiation (ECO and ECO+ modes) and power consumption

PHILIPS

Highlights

Easy setup



Ultimate convenience through easy set up. Simplified installation - Plug & Play product

Optimized antenna layout



Our optimized antenna layout ensures strong and stable reception – even in areas of the house where cordless transmission is difficult. Now you can take a call wherever you are in the house, and enjoy a long, uninterrupted conversation even as you walk around.

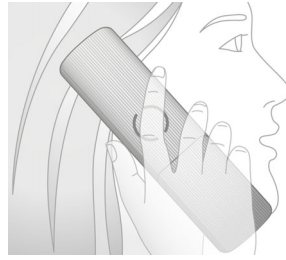
Direct access to key features

Even the simplest menu would require to make few extra steps to access the feature or change settings. Direct access to key features enables you to skip those steps. Direct volume control on the handset allows you to easily adjust the sound level during the call. A dedicated button on the keypad will bring you directly to the phone book.

Extra loud sound and ringer

Extra loud sound volume means you will be able to hear every word of every conversation. With extra loud ringer you will always be able to hear when someone calls – no matter where you are in the house.

Non-slip grip



The rear of the handset is treated with a special texture for added comfort and better grip.

Up to 16 hours talk time

Up to 16 hours talk time on a single charge

Eco-conscious model with ECO+



Philips phones are energy efficient and designed to be respectful to the environment. The power consumed by them in stand-by mode is less than 0.75 W. When ECO mode is activated the emitted radiation is reduced by up to 60%, and up to 95% when the phone is charging. Whith ECO+ mode activation the radiation drops to zero.

Handset speakerphone



Handsfree mode uses a built-in loud speaker to amplify the voice of the caller, allowing you to

speak and listen during a call without holding the phone to your ear. This is especially useful if you want to share the call with others or simply multitask.

Hearing aid compatible

This feature enables the phone to couple with the hearing aid to amplify conversation while reducing ambient noise and the buzzing, humming, or whining noise that can otherwise occur.

Instant calling



Now calling the people you care about most is easier than ever. With simple one-touch dialing, you will never have to search for their number again, connecting at the touch of a button.

Large, easy to read display



Large display and easy to read characters.

Specifications

Picture/Display

- Display size: 4.8 cm / 1.9"
- Display type: Alphanumeric
- Backlight: Yes
- Backlight color: Amber

Memory Capacity

- Phonebook: 50 names and numbers
- Redial List Capacity: 20 last numbers
- Call log entries: 50 entries
- Phonebook store in the base

Sound

- Hearing Aid Compatible
- Ringtones on handset: 10 polyphonic
- Acoustic chamber

Convenience

- Menu structure in the handset: List Menu
- Speakerphone - talk handsfree
- Signal strength indicator: 3- bar indicator
- Battery level indicator: 3- bar battery icon
- Intercom - multiple handsets
- Date / Time display
- Battery charge indication
- Programmable hot keys: Key 1 and 2, M1/2/3
- Call Management: Call Waiting, Caller ID, Microphone mute, Missed Calls, Received Calls
- Key tone on/off
- Auto hang up
- Multi base capability: 1
- Multi handset capability: Up to 4
- Number of keys: 23+side volume keys
- Base Station keys: Paging key
- Charge time: 8 hours
- Line cord length: 1.8m

- Power cord length: 1.8m
- Range: Open field <300m; indoor <50m
- Non-slip grip: Canvas texture
- Side volume control
- Up to 16 hrs talk time
- Up to 250 hrs standby time

Power

- Battery capacity: 550 mAh
- Battery type: AAA NiMH Rechargeable
- Mains power: AC 100-240V ~50/60Hz
- Power Consumption: < 0.7 W

Security

- Transmission encryption : Yes

Network Features

- Compatible: GAP

SAR Value

- Philips handsets: <0.1 W/kg

Eco Design

- EcoMode: automatic & manual
- Eco+

Packaging dimensions

- Type of shelf placement: Dummy
- Packaging dimensions (W x H x D):
19,5 x 15,1 x 7 cm
- EAN: 87 12581 67803 6
- Gross weight: 0,553 kg
- Nett weight: 0,443 kg
- Number of products included: 1
- Packaging type: Dummy
- Tare weight: 0,11 kg



Issue date 2013-06-18

Version: 3.0.3

12 NC: 8670 001 00322
EAN: 87 12581 67803 6

© 2013 Koninklijke Philips N.V.
All Rights reserved.

Specifications are subject to change without notice.
Trademarks are the property of Koninklijke Philips N.V.
or their respective owners.

www.philips.com