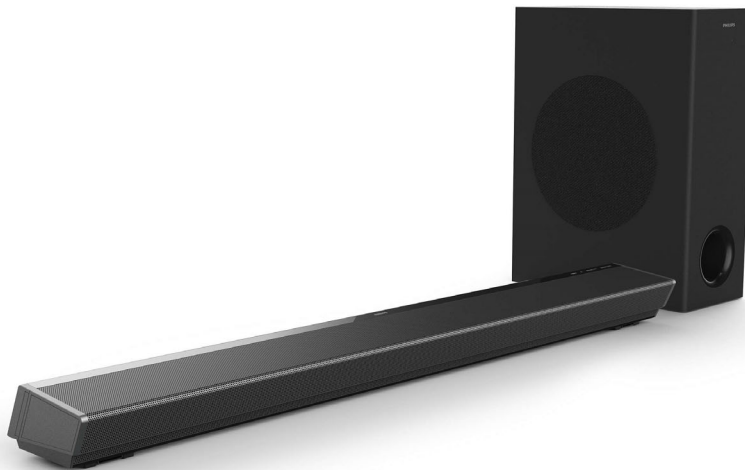


Philips 6000 series  
Soundbar speaker

3.1 CH wireless subwoofer

Dolby Atmos®  
2 HDMI In & HDMI out ARC  
320W

TAPB603



## For every thrilling moment

Experience cinematic sound from your sofa. This Dolby Atmos soundbar with wireless subwoofer draws you deeper into the shows and movies you love. You'll hear the drama flow around you, and even overhead.

### Any source. Every note.

- 2x HDMI-in with 4K pass-through
- Bluetooth and USB connections
- HDMI-out (ARC). Control the soundbar with your TV remote
- Optical-in and audio-in
- Robust metal grille for clear sound

### See it. Hear it. Love it.

- Low-profile soundbar design. Slim-profile sub-woofer
- Place on your TV table, the wall, or any flat surface

### The thrill of cinema

- 3 channels: midrange drivers, and tweeters
- Central speaker for sparkling dialogue. Hear every word
- Dolby Atmos. Cinematic sound
- Wireless subwoofer. Deeper bass
- 320 W output. Powerful sound

# PHILIPS

Soundbar speaker  
3.1 CH wireless subwoofer Dolby Atmos®, 2 HDMI In & HDMI out ARC, 320W

# Specifications

## Sound

- Subwoofer output power: 120W
- Speaker output power: 200W
- Speaker system output power: 320W

## Loudspeakers

- Main unit speaker drivers: L: full range (48x90mm) + tweeter; R: full range (48x90mm) + tweeter; C: full range (52mm) x 2
- Subwoofer type: Active, Wireless subwoofer
- Subwoofer drivers: 1 x low frequency (165.1mm/ 6.5")

## Connectivity

- Integrated Connections: Bluetooth
- Rear Connections: Digital optical in, HDMI IN 1, HDMI IN 2, USB, Audio in 3.5 mm jack, HDMI out (4K passthrough, ARC)

## Supported Audio Formats

- Bluetooth: SBC
- HDMI ARC: Dolby Atmos, Dolby Digital, Dolby Digital plus, LPCM 2ch
- HDMI IN1/IN2: Dolby Atmos, Dolby Digital, Dolby Digital plus, Dolby TrueHD, LPCM 2ch
- USB: MP3, WAV, WMA
- Optical: Dolby Digital, LPCM 2ch

## Outer Carton

- Length: 108.5 cm
- Number of consumer packagings: 2
- Length: 42.7 inch
- Width: 19.5 cm
- Gross weight: 23 kg
- Height: 60 cm
- GTIN: 1 08 40063 20050 7
- Width: 7.7 inch
- Height: 23.6 inch
- Nett weight: 16 kg
- Gross weight: 50.706 lb
- Nett weight: 35.274 lb
- Tare weight: 7 kg
- Tare weight: 15.432 lb

## Convenience

- EasyLink (HDMI-CEC): Audio Return Channel, Automatic audio input mapping, One touch standby, Remote Control-Passthrough

## Power

- Standby power consumption: Main unit: <math>\leq 0.5\text{ W}</math> Subwoofer: <math>\leq 0.5\text{ W}</math>
- Subwoofer power consumption: 20 W
- Subwoofer Power supply: 110-240 V~; 50-60 Hz
- Main unit power consumption: 25 W
- Main unit power supply: 100-240V AC, 50/60 Hz

## Packaging dimensions

- Height: 45 cm
- Packaging type: Box
- Width: 18 cm
- Depth: 106 cm
- Height: 17.7 inch
- Width: 7.1 inch
- Gross weight: 11 kg
- Depth: 41.7 inch
- Nett weight: 8 kg
- Gross weight: 24.251 lb
- Nett weight: 17.637 lb
- Tare weight: 3 kg
- Tare weight: 6.614 lb
- UPC: 8 40063 20050 0

## Accessories

- Included accessories: 1 x CR2025 Battery, Power cord, Quick start guide, Remote Control, World Wide Warranty leaflet

## Design

- Wall mountable

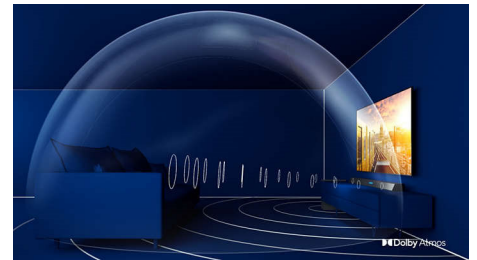
## Dimensions

- Main Unit (W x H x D): 950 x 75 x 134 mm
- Subwoofer (W x H x D): 150 x 412 x 310 mm

TAPB603/37

# Highlights

## Dolby Atmos 3.1



Three channels reproduce height as well as depth, creating a virtual three-dimensional surround sound. Whether it's spaceships flying overhead or the crowd in an arena, you'll feel the drama flow above and around you.

## Powerful sound

The crackle of laser-fire. The thunder of engines. From movies to sports, this 320 W Dolby Atmos-compatible soundbar lets you get more out of the content you love. Three channels liberate the sound of your favorite shows. The powerful, slimline wireless sub-woofer significantly enhances bass. Explosions will rumble, and music sounds deep and rich.

## Crystal-clear dialogue

The central speaker in this soundbar ensures dialogue is crisp, clear—and beautifully balanced. You'll hear every word, whether you're in the corner seat or right in the middle of the room.

## Your favorite tunes

Movie over? Time for a post-series-finale discussion? Once the on-screen drama has ended, switch the soundbar to Bluetooth and cue up a playlist. Or play your tunes straight from USB. You'll enjoy the same rich sound, whatever you love to listen to.

## Distinctive design

The soundbar's slim profile and minimalist good looks make a statement in any home. The slim design of the powerful sub-woofer makes it easy to place.

## Any source

Connect via HDMI, audio-in, USB, and more. 4K passthrough lets you connect 4K video sources directly to the soundbar.

## Any source

Connect via HDMI, audio-in, USB, and more. HDMI-out (ARC) lets you control the soundbar with your TV remote.

## Optical-in and audio-in

Optical-in and audio-in

## Place on any flat surface

Place on your TV table, the wall, or any flat surface

## Robust metal grille

Robust metal grille for clear sound

## Wireless subwoofer

Wireless subwoofer. Deeper bass

## 320 W output. Powerful sound

320 W output. Powerful sound



Issue date 2024-04-13

Version: 10.0.1

UPC: 8 40063 20050 0

© 2024 Koninklijke Philips N.V.  
All Rights reserved.

Specifications are subject to change without notice.  
Trademarks are the property of Koninklijke Philips N.V.  
or their respective owners.

[www.philips.com](http://www.philips.com)