

Always there to help you
隨時為您提供協助

Register your product and get support at
請至以下網址註冊您的產品並取得支援：
www.philips.com/welcome

Question?
Contact
Philips



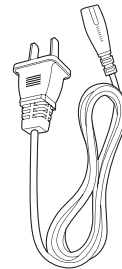
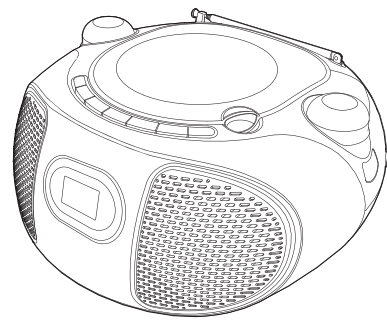
Short User Manual 精簡用戶手冊

PHILIPS

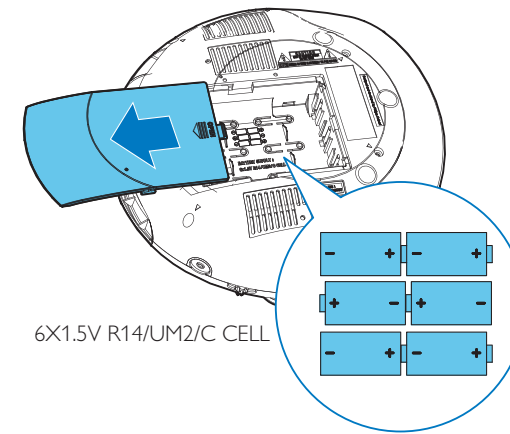
AZ105



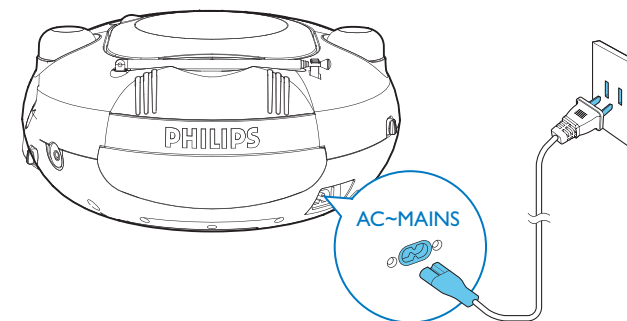
What's in the box
包裝盒內物品



Connect power
連接電源



6X1.5V R14/UM2/C CELL



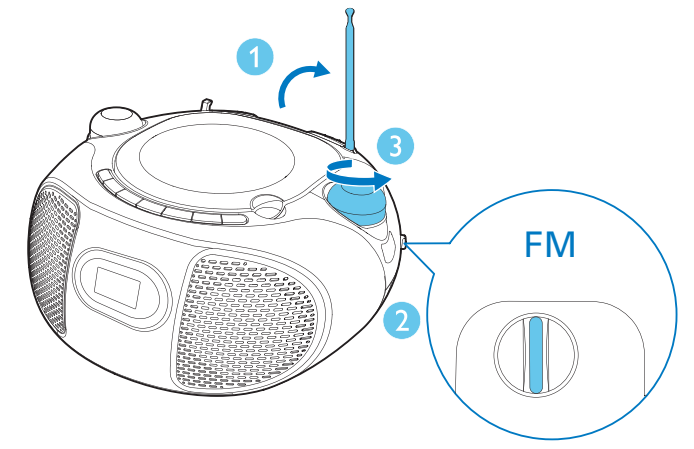
AC~MAINS

To play with the device, you can use either alkaline battery (R14) or AC power.

本裝置可使用 AC 電源或電池電力。



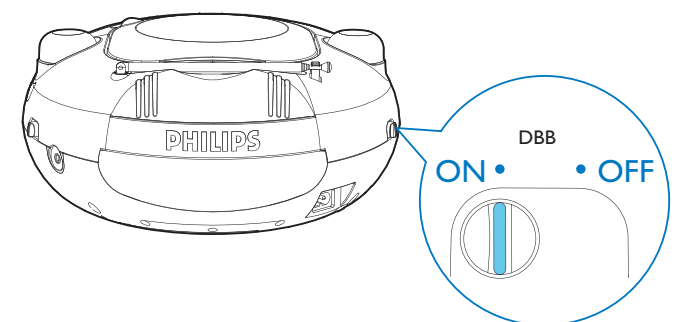
Listen to FM radio
收聽FM廣播



FM

DBB

Turn dynamic bass boost (DBB) on/off
開啟或關閉動態低音增強

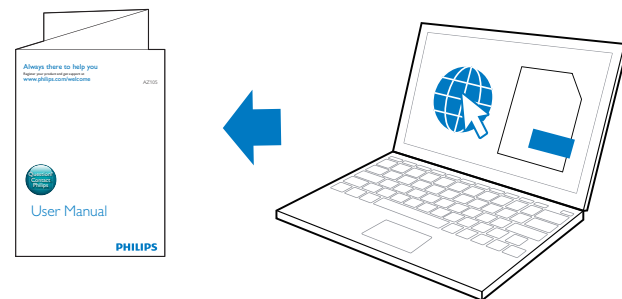


DBB

ON • OFF



For online help
線上幫助

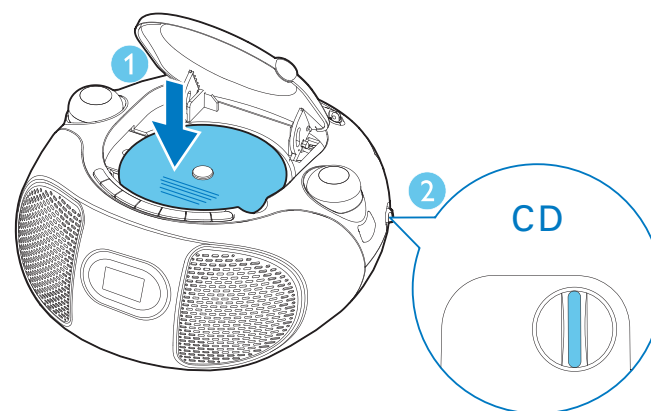


To download the full user manual, visit www.philips.com/support.

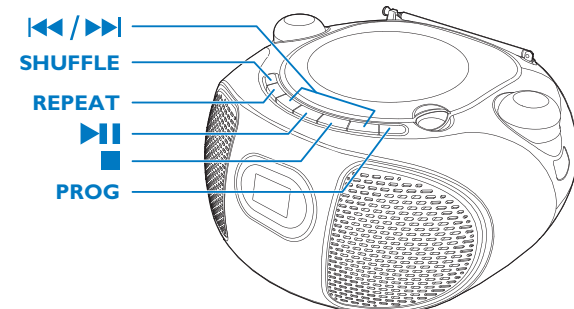
如需完整的用戶手冊，請造訪 www.philips.com/support。



Play disk
播放光碟



CD



SHUFFLE

REPEAT

PROG

- SHUFFLE** Play tracks randomly. 隨機播放曲目。
- REPEAT** Play a track or all tracks repeatedly. 重複播放單一曲目或所有曲目。
- PROG** Program the play sequence of tracks. 編排曲目播放順序。

SKIP Skip to the previous or next track. 跳到上一個/下一個曲目。

SEARCH Search within play. 在播放內進行搜索。

PAUSE Pause or start play. 開始或暫停播放。

STOP Stop play or erase a program. 停止播放。

PROGRAM Program the play sequence of tracks. 編排曲目播放順序。

Program tracks

- In CD mode, press **STOP** to stop playback.
- Press **PROG** to activate programming.
- Press **SKIP** repeatedly to select a track, then press **PROG** to confirm.
- Repeat step 3 to program more tracks.
- Press **PAUSE** to play the programmed tracks.
- To cancel the program, press **STOP** twice.

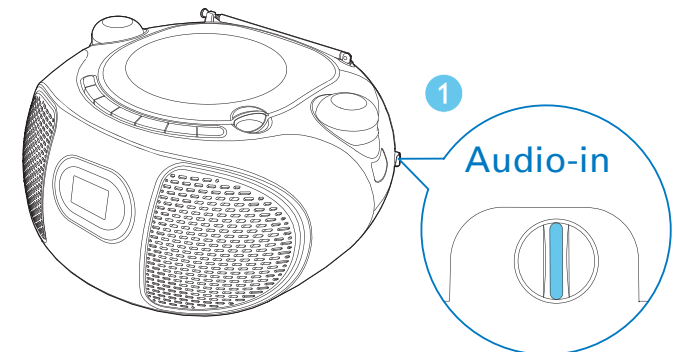
Note: In CD mode, the device switches to standby mode after 15 minutes of inactivity. You can press **PAUSE** to reactivate it.

編排曲目

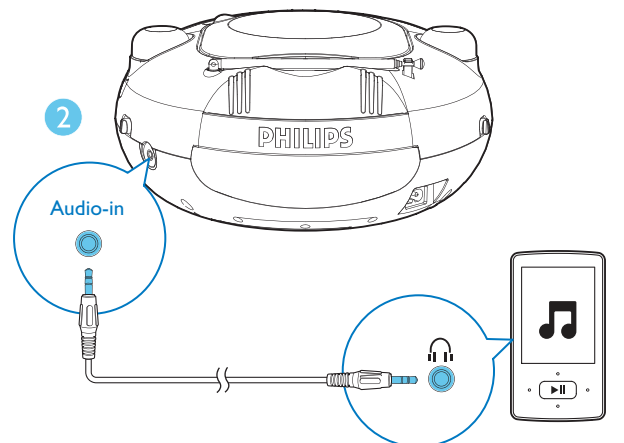
- 在CD模式下按 **STOP** 停止播放。
- 按 **PROG** 啟動編排模式。
- 按 **SKIP** 選擇曲目編號，然後按 **PROG** 確認。
- 重複步驟 3，以編排更多曲目。
- 按 **PAUSE** 播放編排的曲目。
- 若要清除編排，請按 **STOP** 兩次。



Listen to an external audio device
播放外接裝置的內容



Audio-in



All registered and unregistered trademarks are property of their respective owners.
© 2013 Koninklijke Philips Electronics N.V.
All rights reserved.

AZ105_96_Short User Manual_V1.0



Turn off
關閉

Adjust volume
調整音量

Warning and maintenance
警告及產品維護

EN

1 Important

- Read these instructions.
- Follow all instructions.
- Do not block any ventilation openings. Install in accordance with the manufacturer's instructions.
- Do not install near any heat sources such as radiators, heat registers, stoves, or other apparatus (including amplifiers) that produce heat.
- Protect the power cord from being walked on or pinched, particularly at plugs, convenience receptacles, and the point where they exit from the unit.
- Only use attachments/accessories specified by the manufacturer.
- Unplug this unit during lightning storms or when unused for long periods of time.
- Refer all servicing to qualified service personnel. Servicing is required when the unit has been damaged in any way, such as power-supply cord or plug is damaged, liquid has been spilled or objects have fallen into the apparatus, the unit has been exposed to rain or moisture, does not operate normally, or has been dropped.
- Battery usage CAUTION – To prevent battery leakage which may result in bodily injury, property damage, or damage to the unit:
 - Install all batteries correctly, + and - as marked on the unit.
 - Do not mix batteries (old and new or carbon and alkaline, etc.).
 - Remove batteries when the unit is not used for a long time.
- Batteries (battery pack or batteries installed) shall not be exposed to excessive heat such as sunshine, fire or the like.
- The unit shall not be exposed to dripping or splashing.
- Do not place any sources of danger on the unit (e.g. liquid filled objects, lighted candles).
- Where the MAINS plug or an appliance coupler is used as the disconnect device, the disconnect device shall remain readily operable.

Warning

- Never remove the casing of this apparatus.
- Never place this apparatus on other electrical equipment.
- Never look into the laser beam inside this apparatus.

Caution

- Use of controls or adjustments or performance of procedures other than herein may result in hazardous radiation exposure or other unsafe operation.

2 Notice

Any changes or modifications made to this device that are not expressly approved by Philips Consumer Lifestyle may void the user's authority to operate the equipment.

Disposal of your old product and batteries

Your product is designed and manufactured with high quality materials and components, which can be recycled and reused. Never dispose of your product with other household waste. Please inform yourself about the local rules on the separate collection of electrical and electronic products and batteries. The correct disposal of these products helps prevent potentially negative consequences on the environment and human health.

Your product contains batteries, which cannot be disposed of with normal household waste. Please inform yourself about the local rules on separate collection of batteries. The correct disposal of batteries helps prevent potentially negative consequences on the environment and human health. Please visit www.recycle.philips.com for additional information on a recycling center in your area.

Environmental information

All unnecessary packaging has been omitted. We have tried to make the packaging easy to separate into three materials: cardboard (box), paper pulp (buffer) and polyethylene (bags, protective foam sheet.)

Your system consists of materials which can be recycled and reused if disassembled by a specialized company. Please observe the local regulations regarding the disposal of packaging materials, exhausted batteries and old equipment.

This apparatus includes these labels:



Class II equipment symbol



This symbol indicates that the apparatus has a double insulation system.

Note

- The type plate is located on the bottom of the apparatus.

3 Specifications

Rated Output Power	2 x 1 W RMS
Frequency Response	63 -14000 Hz, -3 dB
Signal to Noise Ratio	>57 dBA
Total Harmonic Distortion	<1 %
Audio-in Input	650 mV RMS
Laser Type	Semiconductor
Disc Diameter	12cm/8cm
Support Disc	CD-DA, CD-R, CD-RW
Tuning Range	FM: 87.5 - 108MHz
Total Harmonic Distortion	<3 %
Signal to Noise Ratio	>50 dBA
Speaker Impedance	8 ohm
Power supply	
- AC Power	110-127V ~, 60 Hz
- Battery	9 V, 6 x 1.5 V R14/UM2
Operation Power Consumption	15 W
Standby Power Consumption	< 0.5 W
Dimensions - Main Unit (W x H x D)	261 x 123 x 245 mm
Weight - Main Unit	1.1 kg

ZH-TW

1 重要事項

- 閱讀這些指示
- 遵循所有指示。
- 請勿阻塞任何通風口。請依照製造商的指示進行安裝。
- 請勿將本產品安裝在接近熱源處，例如暖器裝置、暖氣孔、火爐或其他會產生高溫的產品 (包括擴大機在內)。
- 妥善保護電源線，避免踩踏或夾壓，尤其是插頭、便利插座，以及電源線與裝置的連接處。
- 僅使用原廠指定的附件/配件。
- 如遇雷雨或長時間不使用時，請將裝置的插頭拔除。
- 所有維修服務應委託合格的服務人員處理。本裝置因故損壞時 (例如電源線或插頭損壞、液體潑濺、物品掉入產品內部、裝置淋到雨或受潮、無法正常運作或摔落等)，皆必須進行維修。
- 電池使用注意事項 — 為防止電池滲漏導致人身傷害、財物受損或產品損壞：
 - 請依照裝置上標示的 + 與 - 極正確安裝所有電池。
 - 請勿混用電池 (新舊混用或碳鹼性電池混用等)。
 - 若裝置長時間不使用時，請將電池取出。
- 電池 (安裝的電池套組或電池) 請勿暴露在過度的熱源下，例如日照或火焰等。
- 切勿將本裝置置於滴水或澆水環境中。
- 請勿在裝置上放置危險物品 (如盛裝液體的容器、點燃的蠟燭等)。
- 當電源插頭或電器連接器作為中斷連接裝置時，中斷連接裝置應保持隨時可操作。

警告

- 請勿打開產品外殼。
- 請勿將本產品放置在其他電器上。
- 請勿直視本產品內的雷射光。

注意

- 使用本手冊以外的方法來控制、調校或不按順序操作，可能會導致危險輻射外洩或造成危險。

2 注意

未經 Philips Consumer Lifestyle 明示核可即變更或修改本裝置，可能導致使用者操作本設備的授權失效。

處理廢棄產品及電池

您的產品是使用高品質材質和元件所設計製造，可回收和重複使用。請勿將您的產品與其他家用廢棄物共同丟棄。請瞭解當地電氣、電子產品與電池分類收集的相關法規。正確處理這些產品有助於避免對環境和人體健康造成潛在的負面影響。產品內含的電池不得與一般家用廢棄物一併丟棄。請了解當地有關電池的垃圾分類相關法規。正確處理廢棄電池有助於避免對環境和人類健康帶來負面影響。請瀏覽 www.recycle.philips.com 取得當地資源回收中心的相關其他資訊。

環境保護資訊

所有非必要之包裝材料均已省略。我們嘗試讓包裝可以輕易拆解成三種材質：厚紙板 (外盒)、紙漿 (防震) 以及聚乙烯 (包裝袋、保護性泡棉膠紙)。產品本身含有可回收並重複使用的材質，但是需由專業公司拆解。請根據地方法規丟棄包裝材料、廢電池和舊器材。

本產品含有以下標籤：



Class II 設備符號



此符號表示產品具有雙絕緣系統。

備註

- 機型牌位於產品底部。

3 規格

額定輸出功率	2 x 1W RMS
頻率響應	63 -14000 Hz, -3 dB
訊噪比	>57 dBA
總諧波失真	<1 %
音訊輸入	650 mV RMS
雷射類型	半導體
光碟直徑	12 公分/8 公分
支援光碟	CD-DA、CD-R、CD-RW
調諧範圍	FM：87.5 - 108MHz
總諧波失真	<3 %
訊噪比	>50 dBA
揚聲器阻抗	8 歐姆
電源供應	
- AC 電源	110-127 V ~，60 Hz
- 電池	9 V，6 x 1.5 V R14/UM2
操作耗電量	15 W
待機耗電量	< 0.5 W
尺寸 - 主裝置 (寬 x 高 x 深)	261 x 123 x 245 公釐
重量 - 主裝置	1.1 公斤