



Philips
Sleek micro sound system
with LivingSound

wall-mountable

MCM330

Obsessed with sound

Sound that fits your home

Trendy and progressive, unique innovation and style appeals to you. The vividly and chic Philips sleek micro music system, with dynamic sound performance, is packed in a sleek design with LivingSound that embraces you.

Enjoy your music from multiple sources

- MP3 Link for portable music playback
- Play MP3/WMA-CD, CD and CD-RW
- USB Direct and SD/MMC card slots for MP3/WMA music playback
- Digital tuning with preset stations for extra convenience

Enrich your sound experience

- Digital Sound Control for optimized music style settings
- Dynamic Bass Boost for deep and dramatic sound
- 20W RMS total output power
- LivingSound for wider, immersive stereo sound
- wOOx™ loudspeaker Technology for deep and powerful bass

Design that blends into your interior

- Motorized sliding front door adding style and elegance
- Wall-mountable option for flexible placement

PHILIPS

Sleek micro sound system with LivingSound
wall-mountable

Highlights

Digital Sound Control



Digital Sound Control offers you a choice of pre-set Jazz, Rock, Pop and Classic controls you can use to optimise the frequency ranges for different musical styles. Each mode uses graphic equalizing technology to automatically adjust the sound balance and enhance the most important sound frequencies in your chosen music style. Ultimately, Digital Sound Control makes it easy for you get the most out of your music by precisely adjusting the sound balance to match the type of music you are playing.

Dynamic Bass Boost



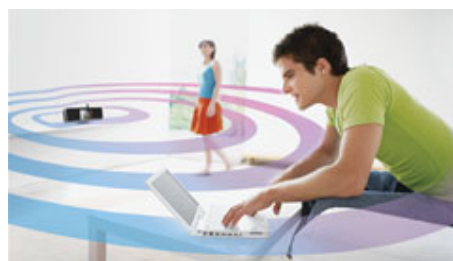
Dynamic Bass Boost maximizes your music enjoyment by emphasizing the bass content of the music throughout the range of volume settings - from low to high - at the touch of a button! Bottom-end bass frequencies usually get lost when the volume is set at a low level. To counteract this, Dynamic Bass Boost can be switched on to boost bass levels, so you can enjoy consistent sound even when you turn down the volume.

20W RMS



This system has 20W RMS total output power. RMS refers to Root Mean Square which is a typical measurement of audio power, or rather, the electrical power transferred from an audio amplifier to a loudspeaker, which is measured in watts. The amount of electrical power delivered to the loudspeaker and its sensitivity determines the sound power that is generated. The higher the wattage, the better the sound power emitted by the speaker.

LivingSound



Philips' patent-pending LivingSound vastly expands the sweet spot (the ideal listening location in your room) so you can enjoy truly immersive music over a wider area. Combining various sound processes, LivingSound recovers the richness and spatial details of the soundstage that are often lost with a compact stereo system. The effect is a larger than expected sweet spot - one that is extensively and evenly distributed around the room. Now your music enjoyment is not confined to the

MCM330/12

traditionally narrow area anymore. Enjoy optimum stereo sound in a wider area.

Motorized sliding front door



A motorized sliding front door adds even more panache to the already sleek design of this system. The stylish yet functional door housing the disc slides up and down vertically in a smooth motion at the touch of a button whenever you feel like changing your music selection. Just sit back and enjoy the dynamic sound performance while watching the disc play through the transparent window.

wOOx™ Technology



wOOx technology is a revolutionary loudspeaker concept that allows you to hear and feel profoundly deep bass that is richer than any other audio system. Special speaker drivers work in harmony with the wOOx bass radiator, and precise tuning between the main driver and the tweeter ensures smooth transitions from low-mid to high frequencies. Dual suspension and a totally symmetrical sandwich construction deliver low and precise base without noticeable distortion. wOOx produces exceptionally deep and dynamic bass by using the speaker box full volume to truly magnify the impact of the music.



Specifications

Sound

- Sound enhancement: digital sound control 4 modes, Dynamic Bass Boost, LivingSound, wOOx™ Technology
- Output power: 2 x 10 W RMS / 2 x 20 W music power
- Volume control: up/down

Loudspeakers

- No. of built-in speakers: 4

Audio playback

- Playback media: CD, CD-R, CD-RW, MP3-CD, WMA-CD, SD/MMC card, USB flash drive
- Disc playback modes: fast forward/backward, next/previous track search, repeat/shuffle/program
- Others: ID3-tag support
- USB Direct playback modes: fast backward/fast forward, play/pause, previous/next, program play, repeat, shuffle, stop

Tuner/Reception/Transmission

- Tuner bands: FM stereo
- RDS: program type, station name, radio text, RDS clock set
- Station presets: 20
- Antenna: FM fixed pigtail antenna
- Tuner enhancement: auto digital tuning, auto scan

Connectivity

- Audio/Video output: Headphone (3.5mm)

- MP3 Link: 3.5mm stereo line in
- USB: USB host

Convenience

- Alarms: CD alarm, radio alarm, USB alarm
- Clock: on main display, sleep timer
- Loader type: front, motorised
- Display enhancements: DIM mode
- Display type: VFD display
- Wall mountable / Ceiling Throw: wall mountable

Accessories

- Cables/Connection: AC-DC adapter, MP3 Link cable
- Remote control: 40-key with lithium battery
- User Manual: multi-languages
- Others: Quick start guide

Dimensions

- Gross weight: 3.07 kg
- Packaging depth: 170 mm
- Main unit depth: 91 mm
- Packaging height: 156 mm
- Main unit height: 143 mm
- Packaging width: 622 mm
- Main unit width: 571 mm

Power

- Power supply: 100 - 240V AC, 50/60Hz

Green

- Eco Power standby: 1 W



Issue date 2014-02-06

Version: 2.0.8

12 NC: 8670 000 49678
EAN: 87 12581 46502 5

© 2014 Koninklijke Philips N.V.
All Rights reserved.

Specifications are subject to change without notice.
Trademarks are the property of Koninklijke Philips N.V.
or their respective owners.

www.philips.com

* Avoid extensive use of the set in a volume higher than 85 decibel
because this may damage your hearing.