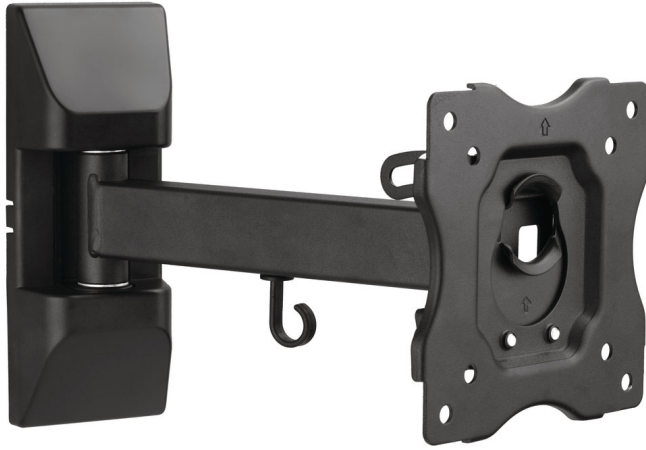


Philips
TV Wall Mount

Universal

Articulating
LCD/LED/OLED/QLED
compatible
Flat & curved TV compatible

SQM9112



Universal articulating wall mount

for TV size between 13" to 28"

Designed to fit most brands of TV with a focus on safety & ease of use. Easy installation kit includes necessary hardware Slim design but strong for weight capacity up to 11 kg (24 lbs). Supports 180 degree full motion.

Safely mount your TV

- Supports screen sizes between 13" to 28"

Easy installation

- Up to VESA 100x100 mounting
- TV cable management to hide cables for a neater look
- Level correction
- Standard VESA mounting hole pattern
- Mounting hardware included

PHILIPS

TV Wall Mount

Universal Articulating, LCD/LED/OLED/QLED compatible, Flat & curved TV compatible

Specifications

Dimensions

- Wall mount compatible: 100 x 100 mm, 75 x 75 mm

Accessories

- Mounting material included

Packaging dimensions

- Number of products included: 1
- Packaging type: Carton

- EAN: 48 95229 12513 1
- Type of shelf placement: Laying

Outer Carton

- GTIN: 1 48 95229 12513 8
- Number of consumer packagings: 2

Inner Carton

- GTIN: 2 48 95229 12513 5
- Number of consumer packagings: 1

SQM9112/00

Highlights

Screen sizes 13" - 28"

TV size can exceed the listed average TV size if the TV fits the specified maximum VESA pattern and weight that this wall mount can support.

Up to VESA 100x100 mounting

Up to VESA 100x100 mounting

Mounting hardware included

Includes all necessary screws, anchors and bolts for different types of walls, ensuring the right type of hardware is readily available for the particular type of wall the support is being mounted on.

Level correction

If the wall mount is slightly off-level after it is installed, it allows for level corrections to horizontally mount the TV.



Issue date 2022-07-14

Version: 2.0.1

12 NC: 8670 001 79771
EAN: 48 95229 12513 1

© 2022 Koninklijke Philips N.V.
All Rights reserved.

Specifications are subject to change without notice.
Trademarks are the property of Koninklijke Philips N.V.
or their respective owners.

www.philips.com