



DC295



Short User Manual

PHILIPS



Safety

Warning

- Never remove the casing of this apparatus.
- Never lubricate any part of this apparatus.
- Never place this apparatus on other electrical equipment.
- Keep this apparatus away from direct sunlight, naked flames or heat.
- Ensure that you always have easy access to the power cord, plug or adaptor to disconnect the apparatus from the power.
- Use only power supplies listed in the user manual.

- Batteries (battery pack or batteries installed) shall not be exposed to excessive heat such as sunshine, fire or the like.
- Battery usage CAUTION – To prevent battery leakage which may result in bodily injury, property damage, or damage to the remote control:
- Install all batteries correctly, + and - as marked on the remote control.
 - Do not mix batteries (old and new or carbon and alkaline, etc.).
 - Remove batteries when the remote control is not used for a long time.
- Make sure that there is enough free space around the product for ventilation.
- The system shall not be exposed to dripping or splashing.
- Do not place any sources of danger on the system (e.g. liquid filled objects, lighted candles).
- Where the plug of the Direct Plug-in Adapter is used as the disconnect device, the disconnect device shall remain readily operable.

Caution

- Remove battery if it is exhausted or will not be used for a long time.
- Batteries contain chemical substances, so they should be disposed of properly.
- Perchlorate Material-special handling may apply. See www.dtsc.ca.gov/hazardouswaste/perchlorate.

- The product/remote control may contain a coin/button type battery, which can be swallowed. Keep the battery out of reach of children at all times! If swallowed, the battery can cause serious injury or death. Severe internal burns can occur within two hours of ingestion.
- If you suspect that a battery has been swallowed or placed inside any part of the body, seek immediate medical attention.
- When you change the batteries, always keep all new and used batteries out of reach of children. Ensure that the battery compartment is completely secure after you replace the battery.
- If the battery compartment cannot be completely secured, discontinue use of the product. Keep out of reach of children and contact the manufacturer.

Important notes for users in the U.K.

This information applies only to products with a UK mains plug.

This product is fitted with an approved molded plug. If you replace the fuse, use one with:

- the ratings shown on the plug,
- a BS 1362 approval, and
- the ASTA approval mark.

Contact your dealer if you are not sure about what type of fuse to use.

Caution: To conform with the EMC directive (2004/108/EC), do not detach the plug from the power cord.

Notice

Any changes or modifications made to this device that are not expressly approved by Philips Consumer Lifestyle may void the user's authority to operate the equipment.



This product complies with the radio interference requirements of the European Community.



Your product is designed and manufactured with high quality materials and components, which can be recycled and reused.



When this crossed-out wheeled bin symbol is attached to a product it means that the product is covered by the European Directive 2002/96/EC.

Please inform yourself about the local separate collection system for electrical and electronic products.

Please act according to your local rules and do not dispose of your old products with your normal household waste. Correct disposal of your old product helps to prevent potential negative consequences for the environment and human health.



Your product contains batteries covered by the European Directive 2006/66/EC, which cannot be disposed with normal household waste. Please inform yourself about the local rules on separate collection of batteries because correct disposal helps to prevent negative consequences for the environmental and human health.

Environmental information

All unnecessary packaging has been omitted. We have tried to make the packaging easy to separate into three materials: cardboard (box), polystyrene foam (buffer) and polyethylene (bags, protective foam sheet.)

Your system consists of materials which can be recycled and reused if disassembled by a specialized company. Please observe the local regulations regarding the disposal of packaging materials, exhausted batteries and old equipment.



"Made for iPod," "Made for iPhone," and "Made for iPad" mean that an electronic accessory has been designed to connect specifically to iPod, iPhone, or iPad, respectively, and has been certified by the developer to meet Apple performance standards. Apple is not responsible for the operation of this device or its compliance with safety and regulatory standards. Please note that the use of this accessory with iPod, iPhone, or iPad may affect wireless performance.

iPod and iPhone are trademarks of Apple Inc., registered in the U.S. and other countries. iPad is a trademark of Apple Inc.

Class II equipment symbol:



CLASS II apparatus with double insulation, and no protective earth provided.pecifications

Specifications

Amplifier

| | |
|-----------------------|---------------------|
| Rated Output Power | 2 x 5 W RMS |
| Frequency Response | 80 Hz -16 kHz, ±3dB |
| Signal to Noise Ratio | ≥67dBA |
| Aux Input (MP3 link) | 0.6 V RMS 20kohm |

FM

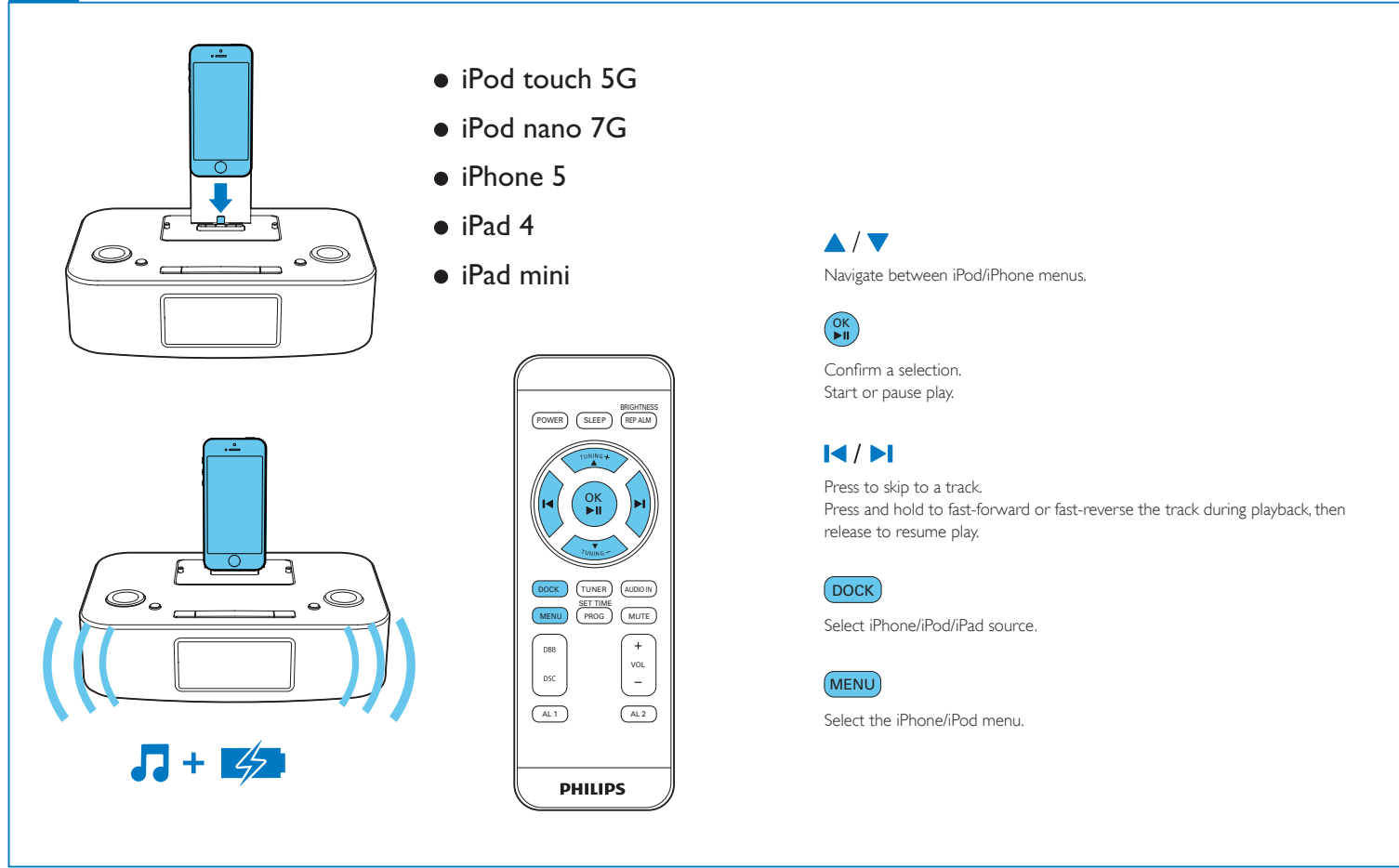
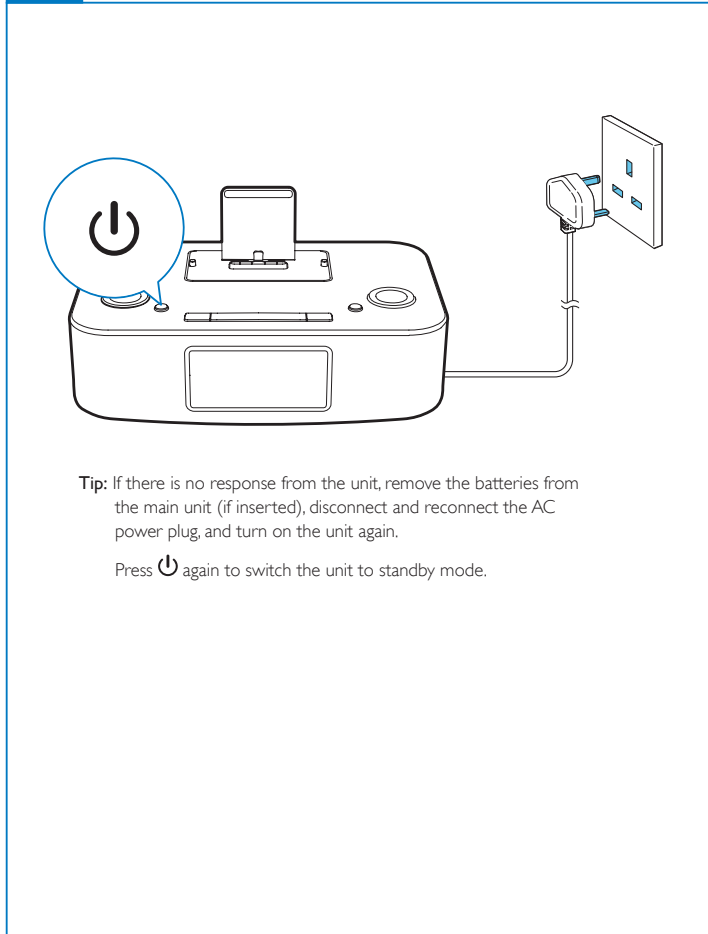
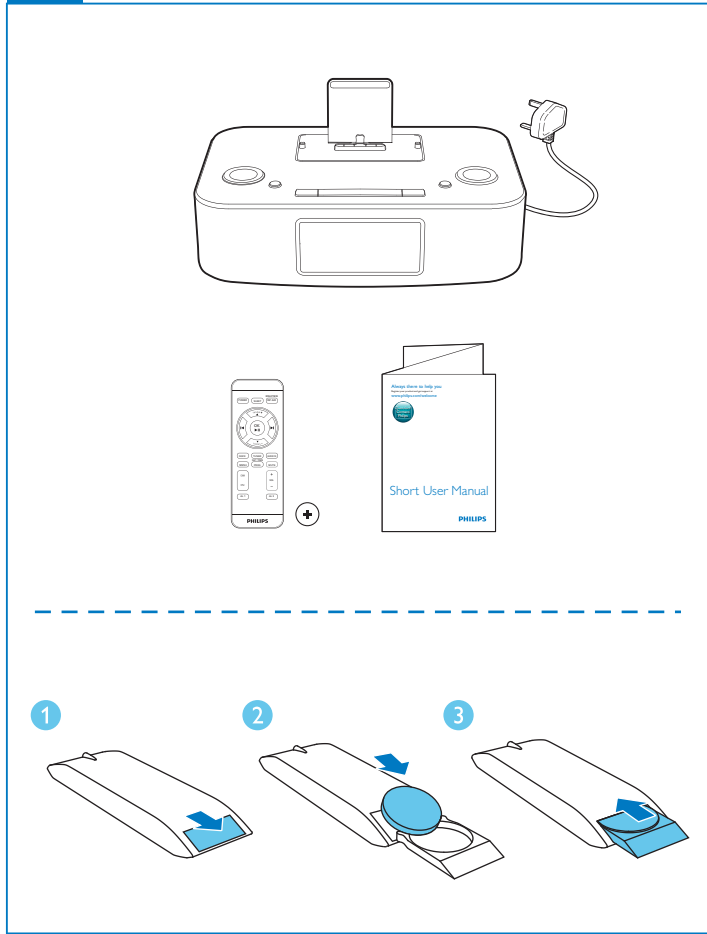
| | |
|---------------------------|-------------------|
| Tuning Range | FM 87.5 - 108 MHz |
| Tuning grid | 50 KHz |
| - Mono, 26dB S/N Ratio | <22 dBf |
| - Stereo, 46dB S/N Ratio | <43 dBf |
| Search Sensitivity | <28 dBf |
| Total Harmonic Distortion | <2% |
| Signal to Noise Ratio | >50 dB |

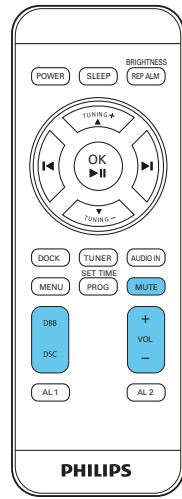
Speakers

| | |
|-------------------|-----------|
| Speaker Impedance | 4 ohm |
| Speaker Driver | 57mm |
| Sensitivity | >84dB/m/W |

General information

| | |
|---|--------------------|
| AC power | 220-240V~, 50/60Hz |
| Operation Power Consumption | 18 W |
| Standby Power Consumption (clock display) | <1 W |
| Dimensions | |
| - Main Unit (W x H x D) | 263 x 135 x 163 mm |
| Weight (Main unit, without packing) | 1.13 kg |





MUTE

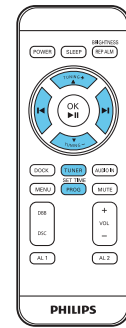
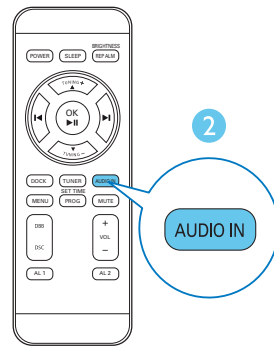
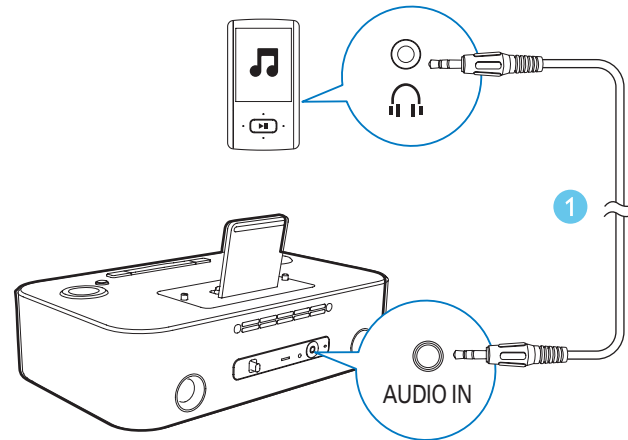
Mute or resume sound.

+ VOL
-

Increase or decrease volume.

DBB
DSC

DBB: Turn on or off dynamic bass enhancement.
DSC: Press to select a sound effect: [POP] (pop); [JAZZ] (jazz); [ROCK] (rock); [CLAS] (classic); and [FLAT] (flat).

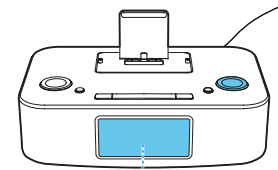


1 TUNER

2 PROG

Program radio stations automatically

In the tuner mode, press and hold **PROG** for more than 3 seconds to activate automatic program mode.



1

▲ / ▼

2

PROG

3

◀ / ▶

4

OK

5

1 2 3 4

Program radio stations manually

- 1 Tune to a radio station.
- 2 Press **PROG** to activate the program mode.
- 3 Press **◀ / ▶** to select a number.
- 4 Press **OK** to confirm.
- 5 Repeat the above steps to program other stations.

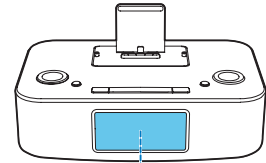
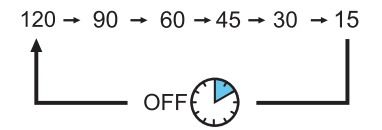
Select a preset radio station

Press **◀ / ▶** to select a preset number.



SLEEP

When the system is turned on, press it to select the sleep timer period. When [OFF] is displayed, the sleep timer is deactivated.



1

SET TIME

2

▲ / ▼

3

OK

4

▲ / ▼

5

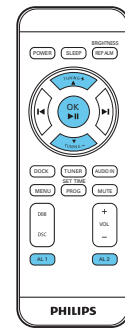
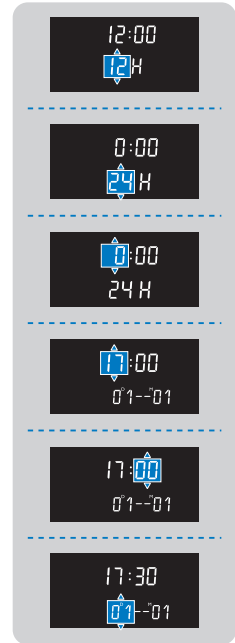
OK

6

4 5

Set Time

- 1 In standby mode, press and hold **SET TIME** for 3 seconds.
- 2 Press **▲ / ▼** to select the 12/24 hour format.
- 3 Press **OK** to confirm.
- 4 Press **▲ / ▼** to set the hour.
- 5 Press **OK** to confirm.
- 6 Repeat steps 4-5 to set the minute, day, month, and year.



1

AL 1 / AL 2

2

▲ / ▼

3

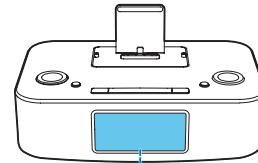
OK

4

2 3

Set Alarm

- 1 Press and hold **AL 1 / AL 2** for 3 seconds.
- 2 Press **▲ / ▼** to set the hour.
- 3 Press **OK** to confirm.
- 4 Repeat steps 2-3 to set the minute, select when to ring the alarm, choose alarm sound source, and set alarm volume.



To download the full user manual, visit www.philips.com/support.

