



# User manual

PHILIPS



Specifications are subject to change without notice 2013 © WOOX Innovations Limited. All rights reserved. This product was brought to the market by WOOX Innovations Limited or one of its affiliates, further referred to in this document as WOOX Innovations, and is the manufacturer of the product. WOOX Innovations is the warrantor in relation to the product with which this booklet was packaged. Philips and the Philips Shield Emblem are registered trademarks of Koninklijke Philips N.V.

AJ3138\_05\_UM\_V1.0



## 1 Important

### Safety

- 1 Read these instructions.
- 2 Keep these instructions.
- 3 Heed all warnings.
- 4 Follow all instructions.
- 5 Do not use this apparatus near water.
- 6 Clean only with dry cloth.
- 7 Do not block any ventilation openings. Install in accordance with the manufacturer's instructions.
- 8 Do not install near any heat sources such as radiators, heat registers, stoves, or other apparatus (including amplifiers) that produce heat.
- 9 Protect the power cord from being walked on or pinched, particularly at plugs, convenience receptacles, and the point where they exit from the apparatus.
- 10 Only use attachments/accessories specified by the manufacturer.
- 11 Use only with the cart, stand, tripod, bracket, or table specified by the manufacturer or sold with the apparatus. When a cart is used, use caution when moving the cart/apparatus combination to avoid injury from tip-over.



- 12 Unplug this apparatus during lightning storms or when unused for long periods of time.
- 13 Refer all servicing to qualified service personnel. Servicing is required when the apparatus has been damaged in any way, such as power-supply cord or plug is damaged, liquid has been spilled or objects have fallen into the apparatus, the apparatus has been exposed to rain or moisture, does not operate normally, or has been dropped.
- 14 Battery usage CAUTION – To prevent battery leakage which may result in bodily injury, property damage, or damage to the unit:
  - Install all batteries correctly, + and - as marked on the unit.
  - Do not mix batteries (old and new or carbon and alkaline, etc.).
  - Remove batteries when the unit is not used for a long time.
- 15 Apparatus shall not be exposed to dripping or splashing.
- 16 Do not place any sources of danger on the apparatus (e.g. liquid filled objects, lighted candles).
- 17 Where the MAINS plug or an appliance coupler is used as the disconnect device, the disconnect device shall remain readily operable.

### Warning

- Never remove the casing of this apparatus.
- Never lubricate any part of this apparatus.
- Never place this apparatus on other electrical equipment.
- Keep this apparatus away from direct sunlight, naked flames or heat.
- Never look into the laser beam inside this apparatus.
- Ensure that you always have easy access to the power cord, plug or adaptor to disconnect this apparatus from the power.

### Notice



This product complies with the radio interference requirements of the European Community. Any changes or modifications made to this device that are not expressly approved by WOOX Innovations may void the user's authority to operate the equipment.



Your product is designed and manufactured with high quality materials and components, which can be recycled and reused.



When this crossed-out wheeled bin symbol is attached to a product it means that the product is covered by the European Directive 2002/96/EC.

Please inform yourself about the local separate collection system for electrical and electronic products.

Please act according to your local rules and do not dispose of your old products with your normal household waste. Correct disposal of your old product helps to prevent potential negative consequences for the environment and human health.



Your product contains batteries covered by the European Directive 2006/66/EC, which cannot be disposed with normal household waste. Please inform yourself about the local rules on separate collection of batteries because correct disposal helps to prevent negative consequences for the environmental and human health.

### Environmental information

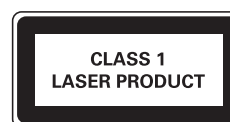
All unnecessary packaging has been omitted. We have tried to make the packaging easy to separate into three materials: cardboard (box), polystyrene foam (buffer) and polyethylene (bags, protective foam sheet).

Your system consists of materials which can be recycled and reused if disassembled by a specialized company. Please observe the local regulations regarding the disposal of packaging materials, exhausted batteries and old equipment.

Be responsible  
Respect copyrights

The making of unauthorized copies of copy-protected material, including computer programs, files, broadcasts and sound recordings, may be an infringement of copyrights and constitute a criminal offence. This equipment should not be used for such purposes.

This apparatus includes this label:



## 2 Your clock radio

Congratulations on your purchase, and welcome to Philips! To fully benefit from the support that Philips offers, register your product at [www.philips.com/welcome](http://www.philips.com/welcome).

### Introduction

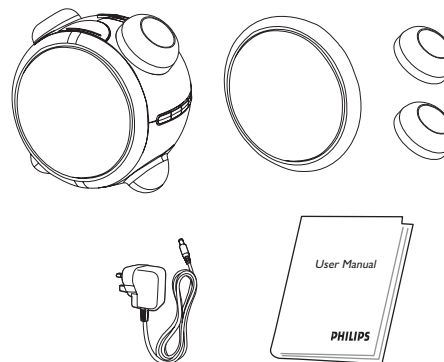
With this clock radio, you can:

- Enjoy the FM radio
- Know the time
- Wake up to buzz, favorite radio tone, or recorded sound
- Set two alarms to ring at different time.

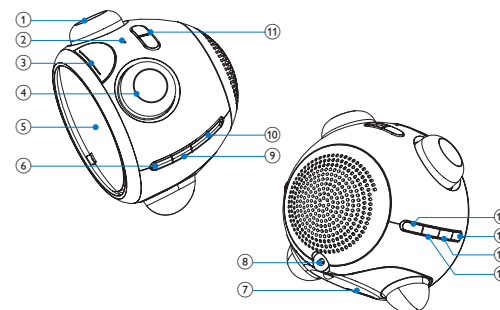
### What's in the box

Check and identify the contents of your package:

- Main unit x 1
- AC power adaptor x 1
- Decorative ring x 1
- Knob x 2
- User manual x 1



### Overview of the main unit



- 1 volume
  - Adjust volume.
- 2 mic
  - Built-in microphone.
- 3 repeat alarm/brightness control
  - Repeat the alarm.
  - Adjust the display brightness.
- 4 tuning
  - Tune to a radio station.
- 5 Display panel
- 6 radio
  - Turn on/off the radio.
- 7 Battery compartment
- Antenna (Inside the battery compartment)
- 8 AC IN jack
- 9 set/scan
  - Set the clock.
  - Scan radio stations.
  - Program radio stations.
- 10 +/-
  - Tune to a radio station.
  - Select a preset radio station.
  - Adjust time.
  - Select time format.

- 11 alarm / snooze
  - Set the alarm timer.
  - View the alarm time.
  - Turn on/off the alarm.
- 12 rec/play
  - Record a piece of sound.
  - Play the recorded sound.
- 13 display
  - Display information.
- 14 nap
  - Select the nap time.
- 15 sleep
  - Set sleep timer.

## 3 Get started

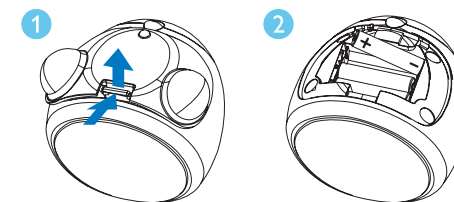
Always follow the instructions in this chapter in sequence.

### Install batteries

#### Caution

- Risk of explosion! Keep batteries away from heat, sunshine or fire. Never discard batteries in fire.
- Risk of product damage! When the apparatus is not used for long periods, remove the battery.
- Batteries contain chemical substances, so they should be disposed of properly.

- 1 Open the battery compartment.
- 2 Insert 3 AAA batteries (not supplied) with correct polarity (+/-) as indicated.
  - ↳ The screen lights up for 5 seconds.
- 3 Close the battery compartment.



#### Tip

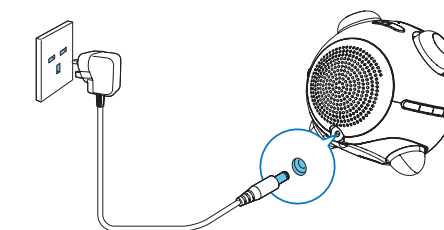
- When the unit is powered by battery, the screen lights up for 5 seconds after any operation.

### Connect power

#### Caution

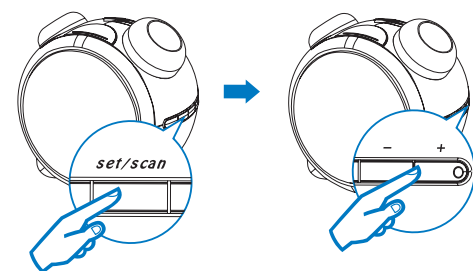
- Risk of product damage! Ensure that the power supply voltage corresponds to the voltage printed on the back or the underside of the apparatus.
- Risk of electric shock! When you unplug the AC power cord, always pull the plug from the socket. Never pull the cord.
- Before connecting the AC power cord, ensure you have completed all other connections.

- 1 Connect the power cord to
  - the AC IN jack on the back of the main unit.
  - the power socket.



### Set time and date

- 1 In clock mode, press **set/scan**.
  - ↳ The hour digits begin to blink.
- 2 Press **+/-** to set hour.
- 3 Press **set/scan** to confirm.
- 4 Repeat steps 2-3 to set the minute.
- 5 Repeat steps 2-3 to select 12 hour or 24 hour format.
- 6 Repeat steps 2-3 to set the year.
- 7 Repeat steps 2-3 to set the date.
- 8 Repeat steps 2-3 to set the month-day display mode.



## 4 Listen to radio

### Tune to a radio station

- 1 Press **radio** to turn on the radio.
- 2 Rotate **tuning** clockwise or counter-clockwise to tune to a radio station.

### Program radio stations automatically

- Note**
- You can program a maximum of 20 preset radio stations.

- 1 Press **radio** repeatedly to turn on the radio.
- 2 Press and hold **set/scan** for 2 seconds.
  - ↳ All available stations are programmed in the order of waveband reception strength.
  - ↳ The first programmed radio station broadcasts automatically.

### Program radio stations manually

- Note**
- You can program a maximum of 20 preset radio stations.

- 1 Press **radio** repeatedly to turn on the radio.
- 2 Rotate **tuning** clockwise or counter-clockwise to tune to a radio station.
- 3 Press **set/scan**.
  - ↳ The number begins to blink.
- 4 Press **+/-** repeatedly to select a preset number.
- 5 Press **set/scan** to confirm.
- 6 Repeat the above steps to program more stations.

- Tip**
- To overwrite a programmed station, program another station in its place.

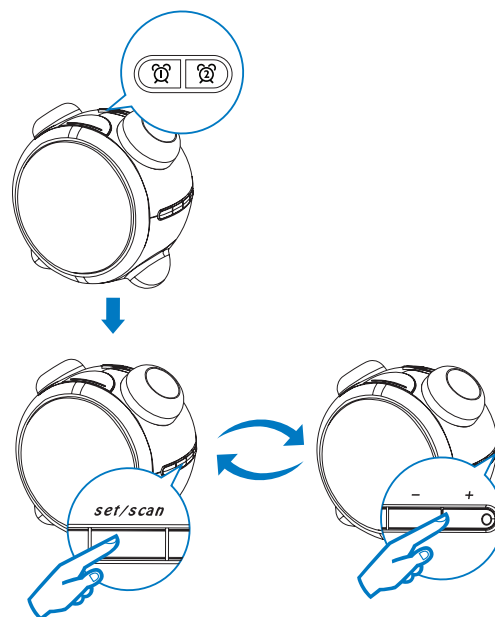
### Select a preset radio station

- 1 Press **radio** to turn on radio.
- 2 Press **+/-** to select a radio station.

## 5 Set the alarm timer

You can set two separate alarms. For the alarm tone, you can select the buzz, the FM radio, or a piece of recorded sound.

- 1 Before you start, ensure that the time is set correctly.
- 2 Press **🔔** / **🔔**.
  - ↳ **🔔** or **🔔** is displayed.
- 3 Press **set/scan**.
  - ↳ The hour digits begin to blink.
- 4 Press **+/-** to set the hour.
- 5 Press **set/scan** to confirm.
  - ↳ The minute digits begin to blink.
- 6 Repeat steps 3-5 to set the minute.
- 7 Repeat steps 3-5 to select whether to ring alarm for the whole week, on weekdays, or at weekend.
- 8 Repeat steps 3-5 to select an alarm source: buzz, radio, or recorded sound.
  - ↳ The apparatus turns on automatically at the set time and rings with buzz or radio or recorded sound.



- Tip**
- You can also press and hold **🔔** / **🔔** to start alarm setting.
  - The gentle wake-up function is designed for buzzer/radio source only.
  - To adjust volume for the radio source, exit the alarm mode first.

### Turn on/off the alarm timer

- Note**
- Ensure that you already set the alarms successfully.

Press **🔔** or **🔔** repeatedly to turn on or off the alarm timer.

- ↳ If the alarm timer is turned on, **🔔** or **🔔** appears.
- ↳ If the alarm timer is turned off, **🔔** or **🔔** disappears.

### Repeat alarm

- 1 When the alarm rings, press **repeat alarm/brightness control**.
  - ↳ The alarm repeats ringing minutes later.

- Tip**
- You can press **repeat alarm/brightness control** again to adjust interval to repeat alarm (5, 10, 15, 20, 25, or 30 minutes).

### Stop alarm ring

- 1 When the alarm rings, press the corresponding **🔔** or **🔔**.
  - ↳ The alarm stops but the alarm settings remain.

### View the alarm settings

- 1 Press **🔔** / **🔔** or **display**.

## 6 Other features

### Set the sleep timer

You can set the clock radio to turn off automatically after a certain period of time.

- 1 Press **sleep** repeatedly to select time (in minutes).
  - ↳ The apparatus turns off automatically after the set period of time.

**To turn off the sleep timer:**

- 1 Press **sleep** repeatedly until **[OFF]** (off) appears or press **radio**.
  - ↳ **.zZ** is displayed when sleep timer is on and disappears when it is off.

### Set nap timer

- 1 Press **nap** repeatedly to select the nap time (in minutes).
  - ↳ The alarm rings after the set period of time.
- To turn off the nap timer**
- 1 Press **nap** repeatedly until **[OFF]** is displayed.

## Record a piece of sound

- Note**
- You can record for a maximum of 8 seconds.

- 1 Press and hold **rec/play** during the whole process of recording.
  - ↳ **[●REC]** is displayed.
  - ↳ When the sound is recorded, **🔊** is displayed.

- Tip**
- Keep the sound source close to **mic** on the top of the unit.

- To play the recorded sound, press **rec/play**.
  - ↳ **🔊** is displayed.

## Adjust the volume level

- 1 Rotate **volume** to increase/decrease the volume level.

## Adjust display brightness

- 1 Press **repeat alarm/brightness control** repeatedly to turn on/off the backlight of the display.

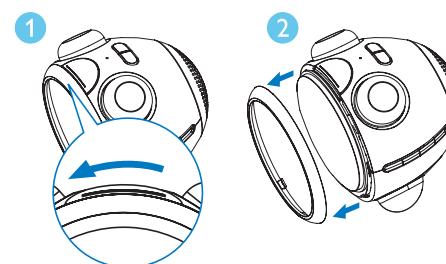
## Activate the backlight blinking function

- 1 Press and hold **repeat alarm/brightness control** for 5 seconds.
  - ↳ The backlight blinks.
  - ↳ When the alarm rings next time, the backlight blinks for 3 minutes.
- To deactivate the backlight blinking function**
- 1 Press and hold **repeat alarm/brightness control** for 5 seconds again.

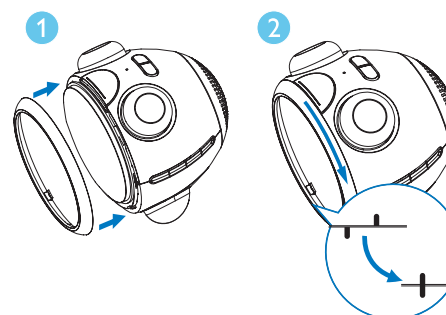
## Change the decorative ring and knobs

- Note**
- You can change the decorative ring and knobs with the supplied ring and knobs.

- To change the decorative ring**
- 1 Rotate the ring counter-clockwise.
  - ↳ The ring separates from the main unit.

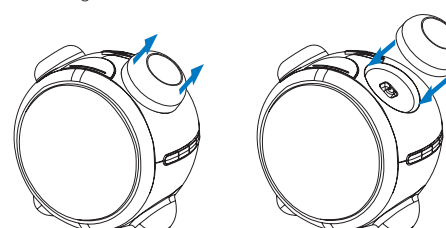


- 2 Place the ring to be installed onto the main unit.



- 3 Rotate the ring clockwise.
  - ↳ The ring is installed.

- To change the knobs**
- 1 Pull the knobs directly out of the socket.
- 2 Plug the knobs to be installed into the sockets.



## 7 Product information

- Note**
- Product information is subject to change without prior notice.

## Specifications

Tuner (FM)	
Tuning Range	87.5 - 108MHz
Tuning grid	50KHz
Sensitivity	<22 dBf
- Mono, 26dB S/N Ratio	
Search Selectivity	<32 dBf
Total Harmonic Distortion	<3%
Signal to Noise Ratio	>50dB

## General information

Power	- AC: Model: BA3514050018G Input: 230 - 240V~, .50Hz, 20 mA, Output: 5V~, 180 mA - DC: 3 x AAA batteries
Operation Power Consumption	2W
Standby Power Consumption	<0.5W
Dimensions	
- Main Unit (W x H x D)	103 x 102 x 103 mm
Weight	
- With Packing	0.6 kg
- Main Unit	0.3 kg

## 8 Troubleshooting

- Caution**
- Never remove the casing of this apparatus.

To keep the warranty valid, never try to repair the system yourself. If you encounter problems when using this apparatus, check the following points before requesting service. If the problem remains unsolved, go to the Philips web site ([www.philips.com/support](http://www.philips.com/support)). When you contact Philips, ensure that your apparatus is nearby and the model number and serial number are available.

### No power

- Ensure that the Mains cord is connected securely.
- Ensure that there is power at the AC Mains.
- Ensure that the batteries are inserted correctly.

### No sound

- Adjust the volume.

### No response from the unit

- Disconnect and reconnect the AC power plug, then turn on the unit again.

### Poor radio reception

- Increase the distance between the apparatus and your TV or VCR.
- Fully extend the antenna.
- Connect an outdoor antenna instead.

### Timer does not work

- Set the clock correctly.
- Switch on the timer.

### Clock/timer setting erased

- Power has been interrupted or the power plug has been disconnected.
- Reset the clock/timer.