

Philips  
DVD Mini Hi-Fi System



FWD792

## Sized match with performance

Simply unbeatable big bass sound

Stay home and be enchanted by the splendid looks and vivid sounds of your FWD792. Immerse in an entertainment experience enriched by a 3-disk changer, MAX Sound for instant power boost and 3-step Dynamic Bass Boost.

### Enrich your movie experience

- 3 DVD Changer
- DivX playback for high compression video
- Dolby Digital for ultimate movie experience
- Progressive Scan component video for optimized image quality

### Enrich your sound experience

- Total power 350W RMS/ 4600W PMPO
- MAX Sound for instant power boost
- Digital Sound Control for optimized music style settings
- 3-step Dynamic Bass Boost for deep bass experience

### Continuous enjoyment of your favorite music

- Play DVD, (S)VCD, MP3-CD, WMA-CD, CD(RW) & Picture CD
- Dual Logic Tape Deck with auto replay
- Digital tuning with 40 preset stations for extra convenience
- Karaoke for endless karaoke entertainment at home

**PHILIPS**  
sense and simplicity

# Highlights

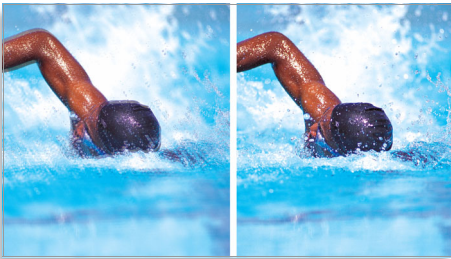
## 3 DVD changer

3 DVD Changer

## DivX playback

With DivX support, you are able to enjoy DivX encoded videos in the comfort of your living room. The DivX media format is an MPEG4-based video compression technology that enables you to save large files like movies, trailers and music videos on media like CD-R/RW, memory cards and DVD-video. DivX CDs can be played back on selected DVD players, DVD Recorders and Home Theater Systems.

## Progressive Scan



Progressive Scan doubles the vertical resolution of the image resulting in a noticeably sharper picture. Instead of sending a field comprising the odd lines to the screen first, followed by the field with the even lines, both fields are written at one time. A full image is created instantaneously, using the maximum resolution. At such a speed, your eye perceives a sharper picture with no line structure.

## Total 350W RMS/ 4600W PMPO

Total power 350W RMS/ 4600W PMPO

## MAX Sound



MAX Sound technology produces an instant boost in bass, maximizing volume performance

and instantly creating the most impressive listening experience with just the touch of a button. Its sophisticated electronic circuitry calibrates existing sound and volume settings, instantly boosting bass and volume to maximum levels without distortion. The end result is a noticeable amplifying of both sound spectrum and volume and a potent audio boost that will add mileage to any music.

## Digital Sound Control



Digital Sound Control offers you a choice of pre-set Jazz, Rock, Pop and Classic controls you can use to optimise the frequency ranges for different musical styles. Each mode uses graphic equalizing technology to automatically adjust the sound balance and enhance the most important sound frequencies in your chosen music style. Ultimately, Digital Sound Control makes it easy for you get the most out of your music by precisely adjusting the sound balance to match the type of music you are playing.

## 3-step Dynamic Bass Boost



Dynamic Bass Boost maximizes your music enjoyment by emphasizing the bass content of the music throughout the range of volume settings - from level one to level three - at the touch of a button! You can customize the bass level that fits your style. Bottom-end bass frequencies usually get lost when the volume is set at a low level. To counteract this, Dynamic

Bass Boost can be switched on to boost bass levels, so you can enjoy consistent sound even when you turn down the volume.

## Play DVD, MP3, WMA, Picture CD



The Philips player is compatible with most DVD and CD discs available in the market. DVD, (S)VCD, MP3-CD, WMA-CD, CD(RW) and Picture CD - all of them can play on the player. SVCD stands for "Super VideoCD". The quality of a SVCD is much better than a VCD, especially much more sharpen picture than a VCD because of the higher resolution. CD(RW) is a shorthand term for a CD drive that can accept the common rewritable CD format.

## Dual Logic Tape Deck

Dual Logic Tape Deck with auto replay

## 40-preset digital tuning



Digital radio offers you additional music options to your music collection on your Philips audio system. Simply tune into the station that you want to preset, press and hold the preset button to memorize the frequency. With preset radio stations that can be stored, you can quickly access your favorite radio station without having to manually tune the frequencies each time.



# Specifications

## Sound

- Output Power: 4600W PMPO
- Total Sound Power (RMS): 350 W
- Sound Enhancement: MAX Sound, Dynamic Bass Boost 3 steps, Virtual Ambience Control, Digital Sound Control
- Sound System: Dolby Digital

## Loudspeakers

- Main Speaker: 2 x 6.5" woofer, 2" tweeter, 1" polydome piezo, 3 way, Bass Reflex Speaker System
- Number of Loudspeakers: 2

## Video Playback

- Loader Type: Motorised
- Number of Discs: 3
- Playback Media: DVD, DivX, DVD+R/+RW, DVD-R/-RW, Video CD, SVCD, Picture CD
- Disc Playback Modes: Disc Menu, OSD, Fast Forward, Fast Backward, Slow Forward, Slow Backward, Search forward/reverse, Resume Playback from Stop, A-B Repeat, Chapter repeat, Repeat, Angle, Zoom
- Video Enhancement: Progressive Scan
- DVD Region.: 3

## Still Picture Playback

- Playback Media: Picture CD, Kodak Picture CD
- Picture Compression Format: JPEG
- Picture Enhancement: Slideshow, Flip photos, Rotate, Zoom

## Audio Playback

- Playback Media: CD, CD-R, CD-RW, MP3-CD, WMA-CD
- Disc Playback Modes: 99-Track Programmable, Repeat/one/all/program
- Cassette Deck Technology: Full Logical
- Cassette Playback Modes: Automatic Stop
- Number of decks: 2

## Audio Recording

- Recording Media: Tape
- Tape Recording Enhancement: CD Synchro Start Recording, Automatic Recording Level

## Tuner/Reception/Transmission

- Auto digital tuning
- Tuner Bands: FM Stereo, MW
- Station presets: 40
- Tuner Enhancements: Auto Store, Easy Set (Plug & Play)

## Connectivity

- Headphone: 3.5 mm
- Microphone: Dual Microphone sockets
- Other connections: ComponentVideo out Progressive, Composite video (CVBS) out, S-Video out, Subwoofer out, Digital output (cinch), Line out, FM Antenna, MW Antenna
- Aux in: Line in

## Convenience

- Alarms: CD Alarm, Radio Alarm, Sleep timer, Tape alarm
- Display Type: FTD
- Karaoke: Echo control, Key control, MIC volume
- Clock: On main display
- OSD Languages: English, French, Portuguese, Russian, Spanish, Thai, Traditional Chinese

## Accessories

- Included Accessories: YPbPr component video cable, Composite video cable (Y), Video Cable, AC Power Cord, Quick start guide, FM/MW Antenna, Batteries for remote control
- Remote control: 45-key
- User Manual: English
- Standard Package Includes: International Guarantee

## Dimensions

- Set dimensions (W x H x D): 265 x 310 x 355 mm
- Main speaker dimensions (W x H x D): 235 x 457 x 247 mm
- Packaging dimensions (W x H x D): 611 x 524 x 522 mm
- Weight incl. Packaging: 23 kg

## Power

- Power supply: 100-240VAC, 50/60Hz



Issue date 2009-07-17

Version: 3.0.5

12 NC: 9073 100 13216  
EAN: 87 10895 95078 7

© 2009 Koninklijke Philips Electronics N.V.  
All Rights reserved.

Specifications are subject to change without notice.  
Trademarks are the property of Koninklijke Philips Electronics N.V. or their respective owners.

[www.philips.com](http://www.philips.com)