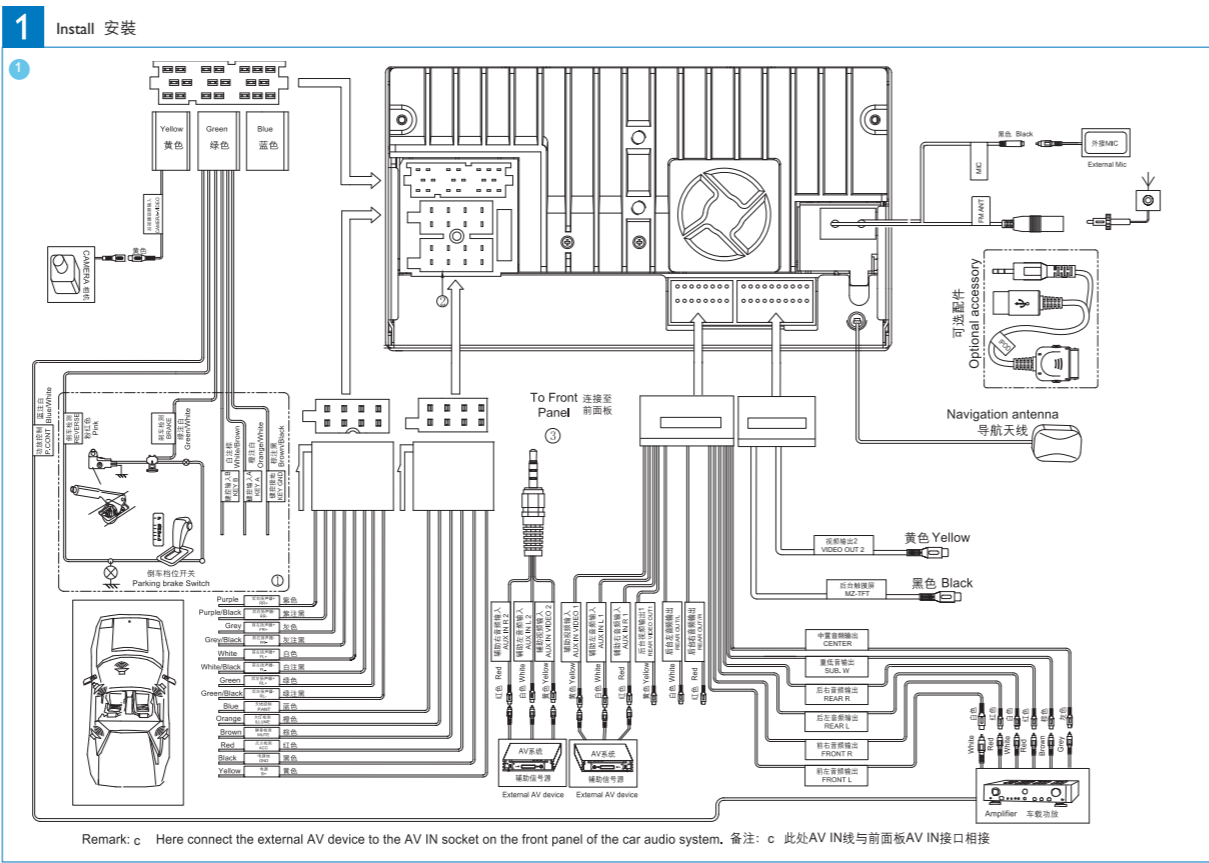


CID2780

# Quick Start Guide 快速使用指南

- 1** Install 安裝
- 2** Enjoy 使用



### 2

### 3

### 4

**! Caution**

- Use of controls or adjustments or performance of procedures other than herein may result in hazardous radiation exposure or other unsafe operation.

Always follow the instructions in this chapter in sequence.

**Install the car audio**

These instructions are for a typical installation. However, if your car has different requirements, make the corresponding adjustment. If you have any questions regarding installation kits, consult your Philips car audio dealer.

**! Caution**

- This unit is designed for negative ground (earth) 12V DC operation only.
- Always install this unit in the car dashboard. Other locations can be dangerous as the rear of the unit heats up during use.
- To avoid short-circuit: before you connect, ensure that the ignition is off.
- Ensure that you connect the yellow and red power supply leads after all other leads are connected.
- Ensure that all loose leads are insulated with electrical tape.
- Ensure that the leads do not get caught under screws or in moving parts (e.g. seat rail).
- Ensure that all ground (earth) leads are connected to a common ground (earth) point.
- Use only the supplied mounting hardware for a safe and secure installation.
- Improper fuses can cause damage or fire. When you need to change the fuse, consult a professional.

**1** If the car does not have an on-board drive or navigation computer, disconnect the negative terminal of the car battery.

- If you disconnect the car battery in a car that has an on-board drive or navigation computer, the computer may lose its memory.
- If the car battery is not disconnected, to avoid a short-circuit, ensure that bare wires do not touch each other.

**2** Ensure that the car dashboard opening is within these measurements: ①.

**3** Ensure that the car dashboard opening is within these measurements: ②.

- Since the unit cannot be used if the dashboard opening's slant angle is above 20 degrees; ensure that the horizontal slant of the car dashboard opening is between 0 and 20 degrees.

**4** Slide the unit into the dashboard, until a click sound is heard. ③

**5** Attach the trim plate. ④

**6** Reconnect the negative terminal of the car battery.

**! 注意**

- 使用本手冊以外的方法來進行控制、調校或操作，可能會導致有害輻射外洩或其他不安全的操作。

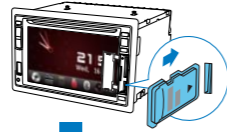
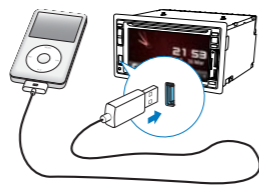
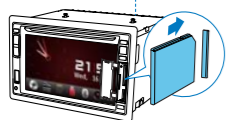
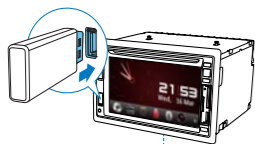
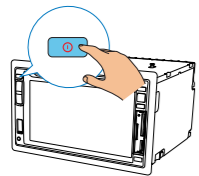
請務必依順序遵循本章指示。

**安裝汽車音響**

這些指示適用於一般安裝。但是，如果您的汽車具有不同需求，請進行相應的調整。如果您對安裝工具包存在任何疑問，請諮詢 Philips 汽車音響經銷商。

**! 注意**

- 此裝置經設計僅適用於負極接地 12V DC 操作。
- 請務必將本裝置安裝於汽車儀表板中。若安裝於其他位置會導致裝置受損，因為使用過程中裝置背面會發熱。
- 為避免出現短路，請確定在連線之前關閉點火開關。
- 確定在連接所有引線之後，最後連接黃色和紅色電源引線。
- 確定已使用絕緣膠帶對所有鬆散引線進行絕緣。
- 確定引線未纏繞在螺絲或移動零件上（如座椅橫樑）。
- 確定所有接地引線已連接至常接地端。
- 請僅使用配套的安装硬件，確保安裝安全。
- 不適用的保險絲會導致設備受損或引起火災。若要更換保險絲，請向專業人士諮詢。



#### Pair the Bluetooth-enabled devices

- 1 Turn on the Bluetooth function on the device.
- 2 Search for Bluetooth device with the device.
- 3 Select "CID2780" in the pairing list.
- 4 Enter default password "0000".  
↳ if pairing succeeds, phone call record is displayed.



#### Make a call

- 1 Pair the phone with the unit.
- 2 Tap to display the home menu.
- 3 Tap .  
↳ List of available Bluetooth devices is displayed.
- 4 Tap on the name of your mobile phone.  
↳ The Bluetooth menu is displayed.
- 5 Tap , , or to select a phone number.
- 6 Tap on a phone number from the list.  
↳ Phone calling starts.
- 7 If connection failed, tap to re-dial .
- 8 When conversation ends, tap .

#### 配對已啟用藍芽功能的裝置

- 1 打開設備的藍芽功能。
- 2 使用此裝置搜尋藍芽裝置。
- 3 在配對清單中選擇「CID2780」。
- 4 輸入預設密碼「0000」。  
↳ 如果配對成功，系統就會顯示通話記錄。

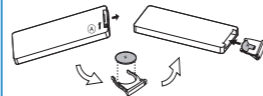


#### 撥打電話

- 1 將電話與此裝置進行配對。
- 2 點選 以顯示首頁功能表。
- 3 點選 。  
↳ 可用的藍芽裝置清單即會顯示。
- 4 點選您流動手機的名稱。  
↳ 將顯示藍芽功能表。
- 5 點選 , , 或 以選擇電話號碼。
- 6 從清單點選電話號碼。  
↳ 即會開始撥打電話。
- 7 如果連接失敗，點選 以重撥。
- 8 通話結束時，點選 。

#### Install remote control battery

- 1 Open the battery compartment.
- 2 Insert one CR2025 battery with correct polarity (+/-) as indicated.
- 3 Close the battery compartment.



#### 安裝遙控器電池

- 1 打開電池盒蓋。
- 2 依照電極 (+/-) 指示正確安裝一顆 CR2025 電池。
- 3 蓋上電池盒蓋。

