

Register your product and get support at
www.philips.com/welcome

Docking Entertainment System

DC315



Quick start guide

1 Connect

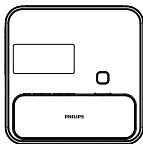
2 Setup

3 Enjoy

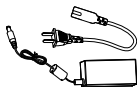
PHILIPS

EN

What's in the box



Main unit



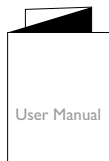
Power cord +
Power adaptor



MP3 link cable



Quick Start Guide

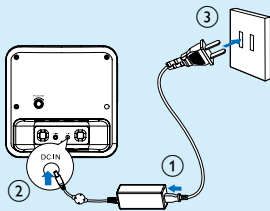


User Manual

1 Connect

A Connect power

- 1 Prepare the AC power adaptor.
- 2 Connect one end of the AC adaptor to the **DC IN** socket on the main unit.
- 3 Connect the other end of the AC adaptor to the wall outlet.



2 Setup

A Set time and date

- 1 In standby mode, press and hold **TIME SET/AUTO SCAN** for 2 seconds.
↳ The hour digits are displayed and begin to blink.
- 2 Press **TUNING +/-** to set the hour.
- 3 Press **TIME SET/AUTO SCAN** to confirm.
↳ The minute digits are displayed and begin to blink.
- 4 Repeat steps 2-3 to set the minute, year, month, day and 12/24 hour format.

B Set the alarm timer

- 1 Ensure that you have set the clock correctly.
- 2 Press and hold **ALM 1** or **ALM 2** for 2 seconds.
↳ **▲ 1** or **▲ 2** and hour digits begin to blink.

- 3 Press **TUNING +/-** repeatedly to set the hour.
- 4 Press **ALM 1** or **ALM 2** to confirm.
↳ **▲ 1** or **▲ 2** and minute digits begin to blink.
- 5 Repeat steps 3-4 to set the minute.
- 6 Repeat steps 3-4 to select whether to ring alarm on weekdays or at weekend.
- 7 Repeat steps 3-4 to select an alarm sound source.
- 8 Repeat steps 3-4 to set the alarm volume.

Activate and deactivate the alarm timer

- 1 Press **ALM 1** or **ALM 2** repeatedly to activate or deactivate the timer.
↳ If the timer is activated, **▲ 1** or **▲ 2** is displayed.
↳ If the timer is deactivated, **▲ 1** or **▲ 2** disappears.

2 Setup

Repeat alarm

- 1 When the alarm rings, press **REPEAT ALARM/ BRIGHTNESS CONTROL**.
↳ The alarm repeats ringing minutes later.

Tip

- You can press **TUNING+/-** to adjust interval to repeat alarm.

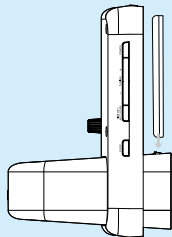
Stop alarm ring

- 1 When the alarm rings, press the corresponding **ALM 1** or **ALM 2**.
↳ The alarm stops but the alarm settings remain.

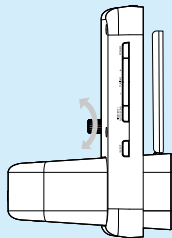
3 Enjoy

A Play from iPod/iPhone

- 1 Place the iPod/iPhone in the dock.



- 2 Turn the adjuster to fit the iPod/iPhone.





© Royal Philips Electronics N.V. 2010

All rights reserved.

Specifications are subject to change without notice.

Trademarks are the property of Koninklijke Philips Electronics N.V. or their respective owners.

Printed in China

DC315_93_QSG_V1.0



100% recycled paper
100% papier recyclé

3

Enjoy

3 Press **SOURCE** repeatedly to select iPod/iPhone source.

- ↳ The connected iPod/iPhone plays automatically.
- To pause/resume play, press ►||
- To skip to a track, press |◀◀▶▶|.
- To search during play, press and hold |◀◀▶▶|, then release to resume normal play.

B Program and listen to radio stations

1 In the tuner mode, press and hold **TIME SET/AUTO SCAN** for more than 2 seconds to activate automatic program mode.

- ↳ All available stations are programmed in the order of waveband reception strength.
- ↳ The first programmed radio station is broadcast automatically.

2 Press **PRESET +/-** to select a preset number.

* Tip

- Detailed functions and features are described in the user manual.