



Philips  
Cordless phone

1.6" display/ amber backlight  
2 handsets

D1402B

## Keep it simple

The Philips D140 Cordless Phone has all the essential functions you need. Just plug and play to enjoy calls. And with micro-USB charging, the D140 can run on a power bank, so you can keep talking even if the power cuts out.

### Nice and simple

- Ultimate convenience through easy setup
- Textured back cover for non-slip grip
- Easy to read 4.1 cm (1.6") display with backlight
- Up to 10 hours talk time on a single charge
- Caller ID – so you always know who is calling\*
- Stay connected during power cuts via micro-USB power bank

### Crystal clear sound

- Parametric Equalizer delivers pure and clear sound
- Automatic Volume Control offsets unwanted volume variation
- Optimized antenna layout for great reception in any room
- Advanced sound testing & tuning for superb voice quality

### Eco-conscious product

- Low radiation and power consumption

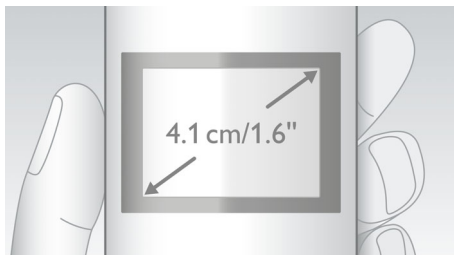
# PHILIPS

Cordless phone  
1.6" display/ amber backlight 2 handsets

D1402B/90

# Highlights

## 4.1cm (1.6") display



Easy to read 4.1 cm (1.6") display with backlight

## Advanced sound testing

We test the sound quality of our DECT phones the same way as high-end headphone manufacturers do. Using an advanced ear simulator, we can accurately re-create the way people actually hear. This helps our acoustic engineers to measure and fine-tune things like frequency response, distortion and overall hearing perception, to create perfect voice reproduction.

## Automatic Volume Control



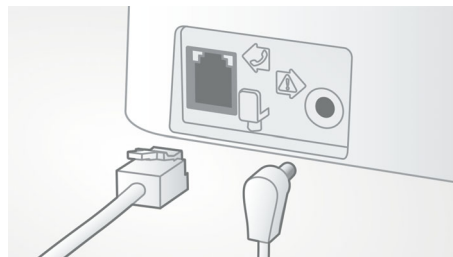
Automatic Volume Control offsets variations in sound signal, which can be caused by distance, signal strength or the caller's phone - so what you hear always remains consistent. Reducing the audio amplification for strong signals, and increasing it for weak ones, it means you can enjoy a smooth conversation without unwanted sound volume variation.

## Caller ID\*



Sometimes it is good to know who is calling before you answer. And our Caller ID lets you keep track of who is on the other end of the line.

## Easy setup



Ultimate convenience through easy set up. Simplified installation - Plug & Play product

## Eco-conscious product



Philips phones are energy efficient and designed to be respectful to the environment.

## Non-slip grip



The rear of the handset is treated with a special texture for added comfort and better grip.

## Optimized antenna layout



Our optimized antenna layout ensures strong and stable reception – even in areas of the house where cordless transmission is difficult. Now you can take a call wherever you are in the house, and enjoy a long, uninterrupted conversation even as you walk around.

## Parametric Equalizer



Our telephones use parametric equalization in the digital sound processing to fine-tune the sound response back to the intended linear frequency response curve, delivering sound that is pure and clear, for each conversation.

## Up to 10 hours talk time

Up to 10 hours talk time on a single charge

# Specifications

## Convenience

- Menu structure in the handset: List Menu
- Signal strength indicator: 3-bar indicator
- Battery level indicator: 3-bar battery icon
- Intercom - multiple handsets
- Date / Time display
- Call Management: Call Waiting\*, Caller ID\*, Microphone mute, Missed Calls, Received Calls, Dialed calls
- Keypad lock
- Key tone on/off
- Auto hang up
- Multi handset capability: Up to 4
- Number of keys: 20
- Base Station keys: Paging key
- Up to 10 hrs talk time
- Charge time: 8 hours
- Line cord length: 1.5m
- Power cord length: 1.5m
- Range: Open field <300m; indoor <50m
- Non-slip grip: Triangular pattern
- Up to 200 hrs standby time

## Sound

- Volume control on handset
- Ringtones on handset: 10 standard
- HQ-Sound

## Picture/Display

- Display size: 4.1cm / 1.6"
- Display type: 12 digits (Alphanumeric) +hard icons
- Backlight: Yes
- Backlight color: Amber

## Memory Capacity

- Phonebook: 50 names and numbers
- Redial List Capacity: 10 last numbers
- Call log entries: 20 entries

## Power

- Battery capacity: 300 mAh
- Battery type: AAA NiMH Rechargeable
- Mains power: AC 100-240V ~50/60Hz

## Security

- Transmission encryption : Yes

## Network Features

- Compatible: GAP

## SAR Value

- Philips handsets: <0.1 W/kg

## Packaging dimensions

- Packaging type: Carton
- Number of products included: 1
- Type of shelf placement: Laying
- Packaging dimensions (W x H x D):  
18.4 x 13.5 x 8.5 cm
- Gross weight: 0.584 kg
- Nett weight: 0.491 kg
- Tare weight: 0.093 kg
- EAN: 48 95185 62912 4

## USB Charging

- Yes



Issue date 2018-02-05

Version: 1.1.2

12 NC: 8670 001 44731  
EAN: 48 95185 62912 4

© 2018 Koninklijke Philips N.V.  
All Rights reserved.

Specifications are subject to change without notice.  
Trademarks are the property of Koninklijke Philips N.V.  
or their respective owners.

[www.philips.com](http://www.philips.com)

\* \*\*This feature requires additional subscription of Caller ID service.  
Please check with your local network operator for details.