

Always there to help you

Register your product and get support at
www.philips.com/support



AJ3275DZ



User manual

PHILIPS

Contents

1 Important	2
Risk of swallowing batteries	2

2 Your clock radio	3
Introduction	3
What's in the box	3
Overview of the clock radio	4

3 Get started	5
Install battery	5
Connect power	5
Set clock	5

4 Play from iPod/iPhone	7
Compatible iPod/iPhone	7
Listen to audio from iPod/iPhone	7
Charge the iPod/iPhone	7
Adjust volume	7

5 Listen to FM radio	8
Tune to FM radio stations	8
Store FM radio stations automatically	8
Store FM radio stations manually	8
Select a preset radio station	8

6 Other features	9
Set alarm timer	9
Set sleep timer	9
Adjust display brightness	10

7 Product information	11
Specifications	11

8 Troubleshooting	12
--------------------------	----

9 Notice	13
-----------------	----

1 Important



Warning

- Never remove the casing of this clock radio.
 - Never lubricate any part of this clock radio.
 - Never place this clock radio on other electrical equipment.
 - Keep this clock radio away from direct sunlight, naked flames or heat.
 - Make sure that you always have easy access to the power cord, plug or adaptor to disconnect the clock radio from the power.
-
- Make sure that there is enough free space around the product for ventilation.
 - Only use attachments/accessories specified by the manufacturer.
 - Use only power supplies listed in the user manual.
 - The clock radio shall not be exposed to dripping or splashing.
 - Do not place any sources of danger on the clock radio (e.g. liquid filled objects, lighted candles).
 - Where the plug of the Direct Plug-in Adapter is used as the disconnect device, the disconnect device shall remain readily operable.

reach of children. Ensure that the battery compartment is completely secure after you replace the battery.

- If the battery compartment cannot be completely secured, discontinue use of the product. Keep out of reach of children and contact the manufacturer:

Risk of swallowing batteries

- The product or remote control may contain a button cell battery, which is possible to be swallowed. Keep the battery out of reach of children at all times! If swallowed, the battery can cause serious injury or death. Severe internal burns can occur within two hours of ingestion.
- If you suspect that a battery has been swallowed or placed inside any part of the body, seek immediate medical attention.
- When you change the batteries, always keep all new and used batteries out of

2 Your clock radio

Congratulations on your purchase, and welcome to Philips! To fully benefit from the support that Philips offers, register your product at www.philips.com/welcome.

Introduction

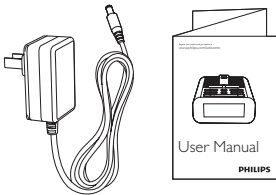
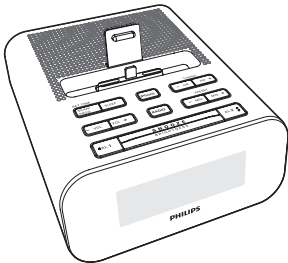
With this clock radio, you can

- Enjoy audio from your Apple devices
- Listen to FM radio stations
- Set alarm timer and sleep timer

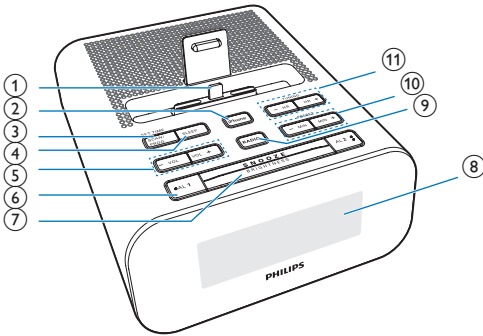
What's in the box

Check and identify the contents of your package:

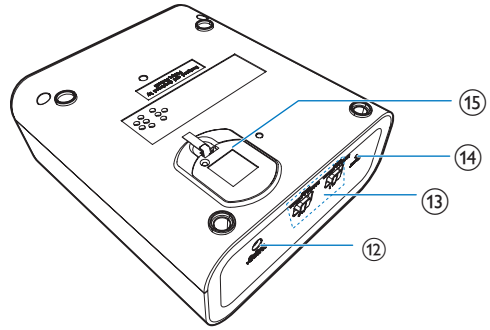
- The clock radio
- AC/DC adaptor
- Short user manual



Overview of the clock radio



- ① iPod/iPhone dock
- ② iPhone
 - Select iPod/iPhone source.
- ③ SCAN/PROG/SET TIME
 - Scan FM radio stations automatically.
 - Program radio stations.
 - Set time.
- ④ SLEEP
 - Set sleep timer.
- ⑤ -VOL/VOL +
 - Adjust volume.
- ⑥ AL1/AL2
 - Enable or disable alarm 1 or alarm 2.
- ⑦ SNOOZE/BRIGHTNESS
 - Snooze the alarm when it rings.
 - Adjust the LCD display brightness.
- ⑧ LCD display panel
- ⑨ RADIO
 - Select FM radio source.
- ⑩ - MIN/MIN +/PRESET
 - Adjust minute.
 - Select preset radio stations.
- ⑪ - HR/HR +/TUNING
 - Adjust hour.
 - Tune to FM radio stations.
- ⑫ DC IN 5V



- ⑬ AL1/AL2
 - Select alarm sound.
- ⑭ FM ANT
- ⑮ Battery compartment

3 Get started

Always follow the instructions in this chapter in sequence.

Install battery

Warning

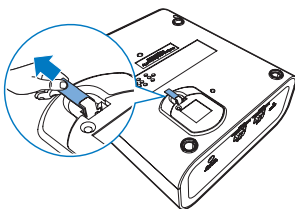
- Risk of explosion! Keep the battery away from heat, sunshine or fire. Never discard the battery in fire.
- Danger of explosion if battery is incorrectly replaced. Replace only with the same or equivalent type.
- The battery contains chemical substances, so it should be disposed of properly.

Note

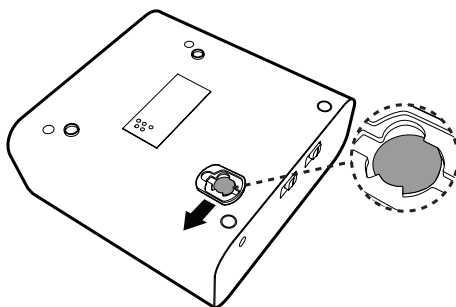
- You can only use AC power as power supply. The lithium CR2032 battery can only back up time and alarm settings.
- When power is disconnected, the display backlight turns off.

For first-time use

Remove the protective tab to activate the battery.



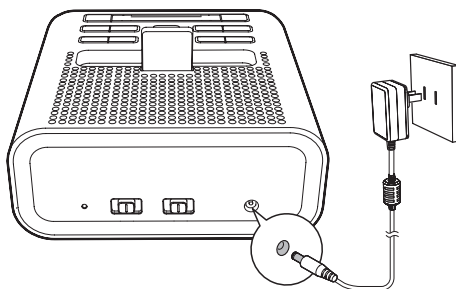
To replace the battery



Connect power

Caution

- Risk of product damage! Make sure that the power voltage corresponds to the voltage printed on the back or underside of the clock radio.
- Risk of electric shock! When you unplug the AC adapter, always pull the plug from the socket. Never pull the cord.








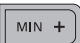
Set clock

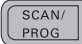
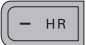
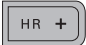


- 1 In standby mode, press and hold **SET TIME** for two seconds.
- 2 Press **- HR/HR +** (or **- MIN/MIN +**) to select 12/24 hour format.
- 3 Press **SET TIME** to confirm.
↳ The hour and minute digits blink.

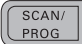
- Press **- HR/HR +** and **- MIN/MIN +** to set the hour and minute respectively.
- Press **SET TIME** again to confirm.



- SET TIME

 
-   /  
- SET TIME


-  
-  
- SET TIME



Note

- When iPod/iPhone is connected, the clock radio synchronizes time with the iPod/iPhone automatically.

4 Play from iPod/iPhone

You can enjoy audio from iPod/iPhone through this clock radio.

Compatible iPod/iPhone

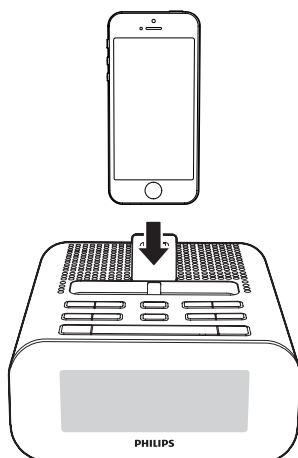
The clock radio supports these iPod and iPhone models:

Made for:

- iPod touch (5th generation)
- iPod nano (7th generation)
- iPhone 6 Plus
- iPhone 6
- iPhone 5
- iPhone 5s
- iPhone 5c

Listen to audio from iPod/iPhone

- 1 Place the iPod/iPhone in the dock.



- 2 Press **iPhone** to enter iPod/iPhone mode.
- 3 Play audio on the iPod/iPhone.
 - To skip to a track, press **- HR/HR +** (or **- MIN/MIN +**).
 - To search during play, press and hold **- HR/HR +** (or **- MIN/MIN +**), then release to resume normal play.



Tip

- Press **iPhone** again to switch to standby mode.

To remove the iPod/iPhone:

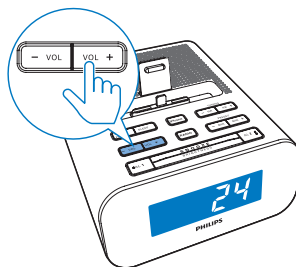
Pull the iPod/iPhone out of the dock.

Charge the iPod/iPhone

When the clock radio is connected to power, the docked iPod/iPhone starts charging.

Adjust volume

Press **-VOL/VOL +** to adjust the volume.

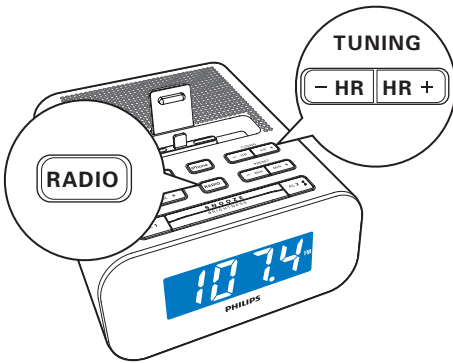


5 Listen to FM radio

Tune to FM radio stations

Tip

- Position the antenna as far as possible from TV, or other radiation source.
- For better reception, fully extend and adjust the position of the antenna.



Note

- To turn the radio on or off, press **RADIO**.

Store FM radio stations automatically

You can store a maximum of 20 FM radio stations.

- 1 Press **RADIO** to turn on the radio.
- 2 Press and hold **SCAN/PROG** for two seconds.

- ↳ The clock radio stores all the available FM radio stations, and then broadcasts the first available station automatically.

Store FM radio stations manually

- 1 Tune to an FM radio station.
- 2 Press **SCAN/PROG**.
↳ The preset number begins to blink.
- 3 Press **PRESET +/-** repeatedly to select a number.
- 4 Press **SCAN/PROG** again to confirm.
- 5 Repeat steps 1-4 to store other stations.

Note

- To remove a pre-stored station, store another station in its place.

Select a preset radio station

In tuner mode, press **PRESET +/-** to select a preset radio station.

6 Other features

Set alarm timer

You can set two alarms to ring at different time.

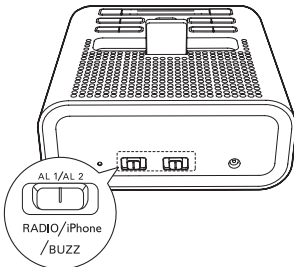
Note

- Make sure that you have set the clock correctly.

- 1 Press and hold **AL1/AL2** for 2 seconds to enter alarm setting mode.
 - ↳ The hour and minute digits blink.
 - ↳ **A** or **B** is displayed accordingly.
- 2 Press **- HR/HR +** and **- MIN/MIN +** to set hour and minute respectively.
- 3 Press **AL1/AL2** again to confirm.

Select alarm sound

For the alarm sound, you can select buzzer, your last heard radio or played track on the iPod/iPhone.



Tip

- When alarm time arrives and you are listening to radio or audio from the iPod/iPhone, buzzer can only be activated as alarm sound.
- If you have selected iPod/iPhone as the alarm source, yet no iPod/iPhone is connected, buzzer will sound when alarm time comes.

Activate/deactivate alarm timer

- 1 Press **AL1/AL2** to view alarm settings.
- 2 Press **AL1/AL2** again to activate or deactivate the alarm timer.
 - ↳ **A** or **B** appears if alarm timer is on and disappears if it is off.
 - To stop alarm, press the corresponding **AL1/AL2**.
 - ↳ The alarm repeats ringing for the next day.

Snooze the alarm

When alarm sounds, press **SNOOZE**.

- ↳ The alarm snoozes and repeats ringing nine minutes later.

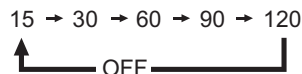
Set sleep timer

This clock radio can switch to standby mode automatically after a preset period.

- Press **SLEEP** repeatedly to select the sleep timer period (in minutes).
 - ↳ When the sleep timer is activated, **zZ** appears.

To deactivate the sleep timer:

- Press **SLEEP** repeatedly until **[OFF]** (off) appears.



Adjust display brightness

Press **SNOOZE/BRIGHTNESS** repeatedly to adjust the display brightness.



7 Product information



Note

- Product information is subject to change without prior notice.

Specifications

Amplifier

Rated Output Power	2W RMS
--------------------	--------

Tuner

Tuning Range	FM: 87.5 - 108 MHz
--------------	--------------------

Tuning Grid	FM: 50 KHz
-------------	------------

Sensitivity

- Mono, 26dB S/N Ratio	FM: <22 dBf
------------------------	-------------

Total Harmonic Distortion	FM: <3%
---------------------------	---------

Signal to Noise Ratio	FM: >50 dBA
-----------------------	-------------

General information

AC Power	Model: AS100-050-AB200; Input: 100-240 V ~, 50/60Hz, 0.5A; Output: 5 V == 2 A
----------	---

Operation Power Consumption	<10 W
-----------------------------	-------

Standby Power Consumption	<2 W
---------------------------	------

Max. Load for iPod/iPhone	5 V == 1 A
---------------------------	------------

Dimensions - Main Unit (W x H x D)	130 x 76 x 145 mm
------------------------------------	-------------------

Weight - Main Unit	0.6 kg
--------------------	--------

8 Troubleshooting



Warning

- Never remove the casing of this device.

To keep the warranty valid, never try to repair the system yourself.

If you encounter problems when using this device, check the following points before requesting service. If the problem remains unsolved, go to the Philips Web page (www.philips.com/support). When you contact Philips, make sure that the device is nearby and the model number and serial number are available.

No response from the unit

- Disconnect and reconnect the AC power plug, then turn on the unit again.

Poor radio reception

- Increase the distance between the unit and your TV or other radiation sources.
- Fully extend the FM antenna.

9 Notice

Any changes or modifications made to this device that are not expressly approved by WOOX Innovations may void the user's authority to operate the equipment.



“Made for iPod” and “Made for iPhone” mean that an electronic accessory has been designed to connect specifically to iPod or iPhone respectively, and has been certified by the developer to meet Apple performance standards. Apple is not responsible for the operation of this device or its compliance with safety and regulatory standards. Please note that the use of this accessory with iPod or iPhone may affect wireless performance.

iPod and iPhone are trademarks of Apple Inc., registered in the U.S. and other countries.

Disposal of your old product



Your product is designed and manufactured with high quality materials and components, which can be recycled and reused.

Do not throw away the product with the normal household waste at the end of its life, but hand it in at an official collection point or recycling. By doing this, you help to preserve the environment.

Environmental information

All unnecessary packaging has been omitted. We have tried to make the packaging easy to separate into three materials: cardboard (box), polystyrene foam (buffer) and polyethylene (bags, protective foam sheet.)

Your system consists of materials which can be recycled and reused if disassembled by a specialized company. Please observe the local regulations regarding the disposal of

packaging materials, exhausted batteries and old equipment.



This is CLASS II apparatus with double insulation, and no protective earth provided.

Note

- The type plate is located on the bottom of the apparatus.



2014 © WOOX Innovations Limited. All rights reserved.

Philips and the Philips' Shield Emblem are registered trademarks of Koninklijke Philips N.V. and are used by WOOX Innovations Limited under license from Koninklijke Philips N.V.

AJ3275DZ_93_UM_V1.0

