

# Always there to help you

Register your product and get support at  
[www.philips.com/welcome](http://www.philips.com/welcome)



DTB855



## User manual

# PHILIPS



# Contents

<b>1 Important</b>	<b>2</b>
Safety	2
Notice	2
<b>2 Your Docking Entertainment System</b>	<b>4</b>
Introduction	4
What's in the box	4
Overview of the main unit	5
Overview of the remote control	6
<b>3 Get started</b>	<b>7</b>
Connect power	7
Prepare the remote control	8
Set clock	8
Turn on	8
<b>4 Play</b>	<b>9</b>
Play disc	9
Play from USB	9
Skip to a track	9
Pause/resume play	9
Search within a track	9
Display play information	9
Select repeat/shuffle play options	9
Program tracks	10
<b>5 Adjust sound</b>	<b>10</b>
Adjust volume	10
Select a preset sound effect	10
Enhance bass	10
Mute sound	10
<b>6 Play iPod/iPhone/iPad</b>	<b>11</b>
Compatible iPod/iPhone/iPad	11
Listen to the iPod/iPhone/iPad	11
Charge the iPod/iPhone/iPad	11
Remove the iPod/iPhone/iPad	11
<b>7 Listen to radio</b>	<b>12</b>
Listen to FM radio	12
Reset to factory setting	13
<b>8 Play audio via Bluetooth</b>	<b>13</b>
Play audio via Bluetooth	14
<b>9 Other features</b>	<b>14</b>
Set the sleep timer	14
Set the alarm timer	14
Play from an external device	15
<b>10 Product information</b>	<b>16</b>
Specifications	16
Maintenance	16
USB playability information	17
Supported MP3 disc formats	17
<b>11 Troubleshooting</b>	<b>18</b>

# 1 Important

## Safety



### Warning

- Never remove the casing of this apparatus.
  - Never lubricate any part of this apparatus.
  - Never place this apparatus on other electrical equipment.
  - Keep this apparatus away from direct sunlight, naked flames or heat.
  - Never look into the laser beam inside this apparatus.
  - Ensure that you always have easy access to the power cord, plug or adaptor to disconnect this apparatus from the power.
- 
- The device shall not be exposed to dripping or splashing.
  - Do not place any source of danger on the device (e.g. liquid filled objects, lit candles).
  - Where the MAINS plug or an appliance coupler is used as the disconnect device, the disconnect device shall remain readily operable.
  - Make sure that there is enough free space around the product for ventilation.
  - Only use attachments/accessories specified by the manufacturer.
  - Battery usage CAUTION – To prevent battery leakage which may result in bodily injury, property damage, or damage to the unit:
    - Install all batteries correctly, + and - as marked on the unit.
    - Do not mix batteries (old and new or carbon and alkaline, etc.).
    - Remove batteries when the unit is not used for a long time.
    - Batteries shall not be exposed to excessive heat such as sunshine, fire or the like.

## Care for your product

- Do not insert any objects other than discs into the disc compartment.
- Do not insert warped or cracked discs into the disc compartment.
- Remove the discs from the disc compartment if you are not using the product for an extended period of time.
- Only use microfiber cloth to clean the product.

## Notice

Any changes or modifications made to this device that are not expressly approved by WOOX Innovations may void the user's authority to operate the equipment.

### Environmental information

All unnecessary packaging has been omitted. We have tried to make the packaging easy to separate into three materials: cardboard (box), polystyrene foam (buffer) and polyethylene (bags, protective foam sheet.)

Your system consists of materials which can be recycled and reused if disassembled by a specialized company. Please observe the local regulations regarding the disposal of packaging materials, exhausted batteries and old equipment.



**Be responsible  
Respect copyrights**

The making of unauthorized copies of copy-protected material, including computer programs, files, broadcasts and sound recordings, may be an infringement of copyrights and constitute a criminal offence. This equipment should not be used for such purposes.

Made for



iPod



iPhone



iPad

“Made for iPod,” “Made for iPhone,” and “Made for iPad” mean that an electronic accessory has been designed to connect specifically to iPod, iPhone, or iPad, respectively, and has been certified by the developer to meet Apple performance standards. Apple is not responsible for the operation of this device or its compliance with safety and regulatory standards. Please note that the use of this accessory with iPod, iPhone, or iPad may affect wireless performance.

iPod and iPhone are trademarks of Apple Inc., registered in the U.S. and other countries. iPad is a trademark of Apple Inc.

The Bluetooth® word mark and logos are registered trademarks owned by Bluetooth SIG, Inc. and any use of such marks by WOOX Innovations is under license.



© 2013 CSR plc and its group companies.

The aptX® mark and the aptX logo are trade marks of CSR plc or one of its group companies and may be registered in one or more jurisdictions.

**This apparatus includes this label:**



#### Note

- The type plate is located at the rear of the apparatus.

## 2 Your Docking Entertainment System

Congratulations on your purchase, and welcome to Philips! To fully benefit from the support that Philips offers, register your product at [www.philips.com/welcome](http://www.philips.com/welcome).

### Introduction

With this music system, you can enjoy audio from audio discs, USB storage devices, iPod, iPhone, iPad, Bluetooth and other external devices, or listen to radio stations.

The music system offers you multiple sound effect settings that enrich sound with Digital Sound Control (DSC) and Dynamic Bass Boost (DBB).

The system supports the following media formats:

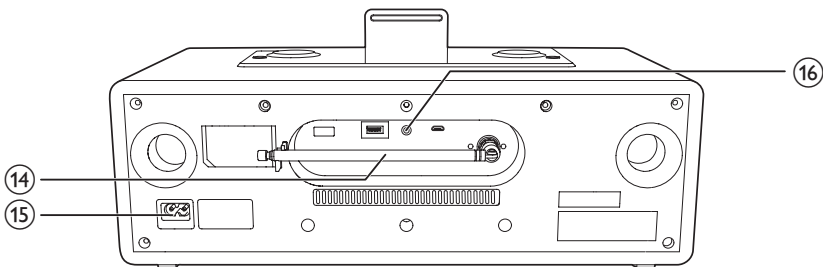
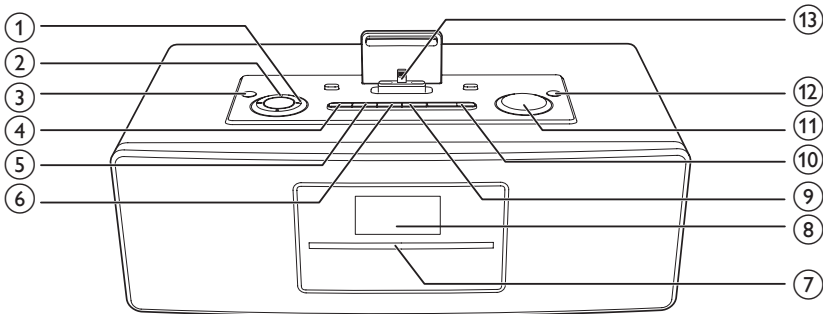


### What's in the box

Check and identify the contents of your package:

- Main unit
- Remote control
- AAA batteries x2
- AC power cord
- Audio in cable
- Short user manual

## Overview of the main unit



### ① ◀◀ / ▶▶ / ▶▶

- Skip to the previous/next track.
- Search within a track.
- Tune to a radio station.

### ② PRESET/ALBUM+/-

- Select a preset radio station.
- Skip to the previous/next album.
- Adjust hour/minute digits.

### ③ ⏻

- Turn on the system, switch to standby mode.

### ④ STOP/MENU

- Stop play.
- Access iPod/iPhone menu.

### ⑤ MODE/SCAN

- Select repeat/shuffle mode.
- Search FM radio stations.

### ⑥ DISPLAY

- During play, select display information.

### ⑦ Disc compartment

### ⑧ Display panel

- Show the current status.

### ⑨ SOURCE

- Select a source: DISC, USB, DOCK, FM TUNER, Bluetooth or audio-in.

### ⑩ USB

- USB socket

### ⑪ VOLUME

- Adjust volume.

### ⑫ EJECT

- Eject disc.

### ⑬ Dock for iPod/iPhone/iPad

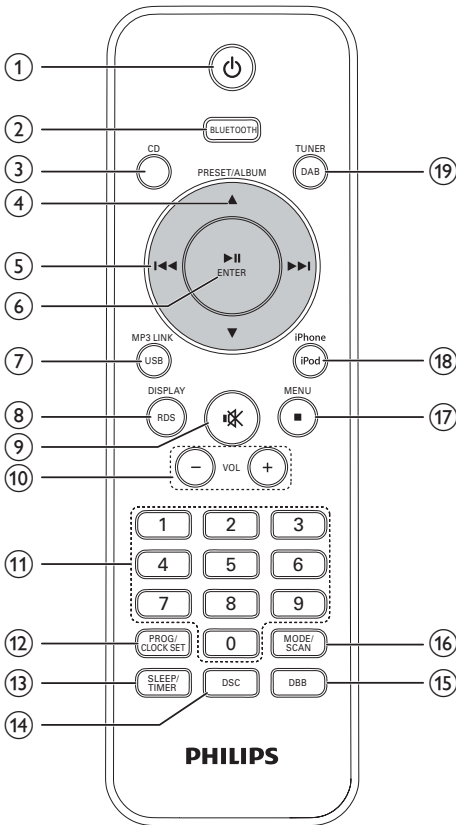
### ⑭ Antenna

### ⑮ AC MAIN~

### ⑯ AUDIO IN

- Connect to an external audio device.

## Overview of the remote control



- ① **Power**
  - Turn on the system, or switch to standby mode, or switch to Eco Power standby.
- ② **BLUETOOTH**
  - Select Bluetooth source.
- ③ **CD**
  - Select disc source.
- ④ **▲ / ▼**
  - Navigate in the iPod menu.
  - Skip to the previous/next album.
  - Skip to the previous/next preset station.

- Select 12 hour or 24 hour format.
- Adjust hour/minute digits.
- ⑤ **◀◀ / ▶▶**
  - Skip to the previous/next track.
  - Search within a track.
  - Tune to a radio station.
- ⑥ **▶▶ / ENTER**
  - Start or pause play.
  - Confirm a selection.
- ⑦ **USB/MP3-LINK**
  - Select USB device source.
  - Select external audio device source.
- ⑧ **RDS/DISPLAY**
  - Display CLOCK.
  - Select display information during play.
- ⑨ **🔇**
  - Mute or restore volume.
- ⑩ **VOL +/-**
  - Adjust volume.
- ⑪ **Numeric keypad**
  - Select a track from a disc directly.
- ⑫ **PROG/CLOCK SET**
  - Program tracks.
  - Program radio stations.
  - Set the clock.
- ⑬ **SLEEP/TIMER**
  - Set the sleep timer.
  - Set the alarm timer.
- ⑭ **DSC**
  - Select a preset sound setting.
- ⑮ **DBB**
  - Turn on or off dynamic bass enhancement.
- ⑯ **MODE/SCAN**
  - Select repeat/shuffle play mode.
  - Search FM radio stations.



- ⑰ **■ /MENU**
- Stop play.
  - Access iPod/iPhone menu.
- ⑱ **iPod/iPhone**
- Select iPod/iPhone source.
- ⑲ **DAB/TUNER**
- Select tuner source.

## 3 Get started



### Caution

- Use of controls or adjustments or performance of procedures other than herein may result in hazardous radiation exposure or other unsafe operation.

Always follow the instructions in this chapter in sequence.

If you contact Philips, you will be asked for the model and serial number of this apparatus. The model number and serial number are on the bottom of the apparatus. Write the numbers here:

Model No. \_\_\_\_\_

Serial No. \_\_\_\_\_

## Connect power

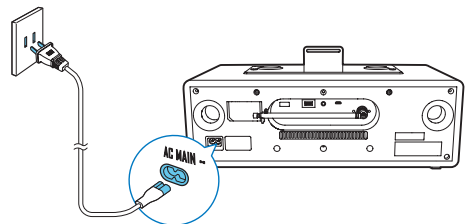


### Caution

- Risk of product damage! Make sure that the power voltage corresponds to the voltage printed on the back or underside of the unit.
- Risk of electric shock! When you unplug the AC power cord, always pull the plug from the socket. Never pull the cord.
- Before connecting the AC power cord, ensure you have completed all other connections.

Connect the power cord to:

- the **AC MAIN~** socket on the main unit.
- the wall outlet.



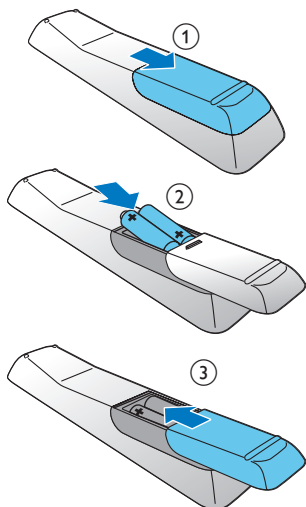
## Prepare the remote control

### ! Caution

- Risk of explosion! Keep batteries away from heat, sunshine, or fire. Never discard batteries in fire.

#### To insert the remote control battery:

- 1 Open the battery compartment.
- 2 Insert 2 AAA batteries with correct polarity (+/-) as indicated.
- 3 Close the battery compartment.



### ≡ Note

- If you are not going to use the remote control for a long time, remove the batteries.
- Do not use old and new or different types of batteries in combination.
- Batteries contain chemical substances, so they should be disposed of properly.

## Set clock

### ≡ Note

- You can set the clock in the standby mode only.

- 1 In standby mode, press and hold **PROG/CLOCK SET** to activate the clock setting mode.
  - ↳ SET CLOCK is displayed.
  - ↳ The 12 hour or 24 hour format is displayed.
- 2 Press **▲ / ▼** to select 12 hour or 24 hour format.
- 3 Press **PROG/CLOCK SET**.
  - ↳ The hour digits begin to blink.
- 4 Press **▲ / ▼** to set the hour.
- 5 Press **PROG/CLOCK SET**.
  - ↳ The minute digits begin to blink.
- 6 Press **▲ / ▼** to set the minute.
- 7 Press **PROG/CLOCK SET** to confirm.

## Turn on

- 1 Press **⏻**.
  - ↳ The unit switches to the last selected source.

## Switch to standby

- 1 Press **⏻** to switch the system to standby mode.
  - ↳ The backlight on the display panel is reduced.
  - ↳ The clock (if set) is displayed on the display panel.

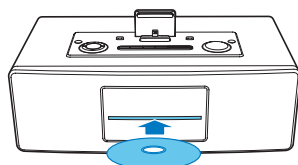
#### To switch the system to Eco Power standby mode:

- 1 In standby mode, press and hold **⏻** for more than 2 seconds.
  - ↳ ECO POWER is displayed.
  - ↳ The backlight on the display panel turns off.

## 4 Play

### Play disc

- 1 Press **CD** to select the disc source.
- 2 Insert a disc into the disc compartment with the printed side facing up.  
↳ Play starts automatically.




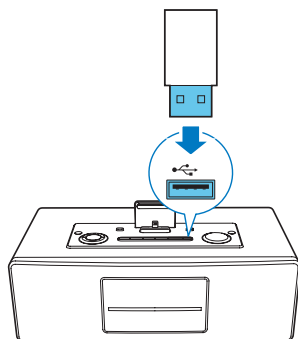
### Play from USB



#### Note

- Ensure that the USB storage device contains playable audio content.

- 1 Connect the USB storage device into the  socket.
- 2 Press **USB** to select the USB source.  
↳ The total number of playable tracks is displayed.  
↳ Play starts automatically.



- Press **▲▼** to access a folder.
- Press **◀◀ / ▶▶** to select a file.
- Press **▶||** to start play.

### Skip to a track

For CD:

- 1 Press **◀◀ / ▶▶** to select another track.
  - To select a track directly, you can also press a key on the numerical keypad.

For MP3 disc and USB:

- 1 Press **▲▼** to select an album or folder.
- 2 Press **◀◀ / ▶▶** to select previous/next track or file.

### Pause/resume play

- 1 During play, press **▶||** to pause/resume play.

### Search within a track

- 1 During play, press and hold **◀◀ / ▶▶**.
- 2 Release to resume normal play.

### Display play information

- 1 During play, press **DISPLAY** repeatedly to select different play information.

### Select repeat/shuffle play options

To select repeat play mode:

- 1 During play, press **MODE** repeatedly to select a repeat option.

- ↳ [Rep one]: plays the current track continuously.
- ↳ [Rep all]: repeats the entire disc/programme.

#### To select shuffle play mode:

- 1 During play, press **MODE** repeatedly to select the shuffle play mode.
  - ↳ [SHUF]: Tracks of the entire disc are played in random order.
- To resume normal play, press **MODE** repeatedly until no shuffle/repeat option is displayed.



#### Tip

- During repeat/shuffle playback, press **■** to stop playback and cancel repeat/shuffle playback.
- Shuffle function is not available while programmed tracks are played.

## Program tracks

You can program a maximum of 20 tracks.

- 1 In CD/USB mode, at the stop position, press **PROG** to activate the program mode.
  - ↳ [PROG] (program) and track number begin to blink.
- 2 For MP3 tracks, press **▲▼** to select an album.
- 3 Press **◀▶** to select a track number; then press **PROG** to confirm.
- 4 Repeat steps 2 to 3 to program more tracks.
- 5 Press **▶||** to play the programmed tracks.
  - ↳ During play, [PROG] (program) is displayed.
  - To erase the program: Press **■** once in the stop mode or twice during playback.
    - ↳ [PROG] disappears on the display.

## 5 Adjust sound

### Adjust volume

During play, press **VOL +/-** to increase/decrease the volume.

### Select a preset sound effect

- 1 During play, press **DSC** repeatedly to select:
  - [POP] (pop)
  - [JAZZ] (jazz)
  - [CLASSIC] (classic)
  - [ROCK] (rock)

### Enhance bass

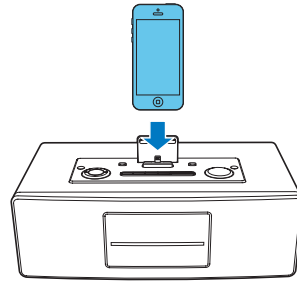
- 1 During play, press **DBB** to turn dynamic bass enhancement on or off.
  - ↳ If DBB is activated, DBB is displayed.

### Mute sound

- 1 During play, press **⏻** to mute/restore the speakers.

## 6 Play iPod/iPhone/iPad

This system is equipped with a dock for iPod/iPhone/iPad. You can enjoy audio from the docked system through the powerful speakers.



### Compatible iPod/iPhone/iPad

Made for Apple iPhone models with Lightning connector as follows:

- iPod nano 7
- iPod touch 5
- iPhone 5
- iPad mini
- iPad 4

### Charge the iPod/iPhone/iPad

When the system is connected to power, the docked iPod/iPhone/iPad begins to charge.

#### Note

- In Eco power standby mode, iPod/iPhone/iPad cannot be charged.

### Listen to the iPod/iPhone/iPad

- 1 Press the button **iPod** on your RC.
- 2 Load your iPod/iPhone/iPad.
- 3 Play the selected track on your iPod/iPhone/iPad.
  - To pause/resume the play, press ►||.
  - To search during play: press and hold ◀◀ / ▶▶, then release to resume normal play.
  - To scroll through the menu, press ▲ / ▼.
  - To confirm a selection, press ►|| to confirm.
    - ➔ If no key is pressed for more than 10 seconds after pressing the button **MENU**, ►|| acts back as the play/pause key.

### Remove the iPod/iPhone/iPad

- Pull the iPhone/iPod/iPad off the dock.

# 7 Listen to radio

An application **Philips DigitalRadio** is available on **Apple App Store** or **AndroidMarket**. To fully enjoy features of this product, download and install the application to your smart device.

## Note

- The application is compatible with iPod touch, iPhone and iPad with iOS 4.3 or above.

## Listen to FM radio

### Tune to a radio station

- 1 Press **TUNER** to select FM.
- 2 Press **◀◀ / ▶▶** to tune to a specific frequency.  
↳ Play starts automatically.

## Tip

- You can press **MODE/SCAN** to tune to the next station with strong reception automatically.

## Program radio stations automatically

You can program a maximum of 30 preset radio stations (FM).

- 1 In the tuner mode, press and hold **MODE/SCAN** to activate automatic program mode.  
↳ All available stations are programmed.  
↳ The first programmed radio station is broadcast automatically.

## Program radio stations manually

## Note

- You can program a maximum of 30 preset radio stations.

- 1 Tune to a radio station.
- 2 Press **PROG** to activate program mode.
- 3 Press **▲ / ▼** to allocate a number (1 to 30) to this radio station, then press **PROG** to confirm.  
↳ The preset number and the frequency of the preset station are displayed.
- 4 Repeat the previous steps to program other stations.

## Note

- To overwrite a programmed station, store another station in its place.

## Select a preset radio station

- 1 In tuner mode, press **▲ / ▼** to select a preset number.

## Tip

- Position the antenna as far as possible from TV, VCR, or other radiation source.
- For optimal reception, fully extend and adjust the position of the antenna.

## Reset to factory setting

- 1 In DAB/FM mode, press **MENU** to enter the menu options.
- 2 Press **◀◀** / **▶▶** repeatedly until **[System]** displays on the display panel.
- 3 Press **▶▶** to access the system menu.  
↳ **[Factory Reset]** displays.
- 4 Press **▶▶** to enter factory reset menu.  
↳ The display panel shows options **[Yes]** and **[No]** under **[Factory Reset]**.
- 5 Press **◀◀** / **▶▶** to select **[Yes]**.
- 6 Press **▶▶** to confirm the DAB/FM factory reset.

## 8 Play audio via Bluetooth

With this product, you can stream audio from a Bluetooth player.

An application **Philips DigitalRadio** is available on Apple **App Store** or **Android Market**. To fully enjoy features of this product, download and install the application to your smart device.



### Note

- The application is compatible with iPod touch, iPhone and iPad with iOS 4.3 or above.



### Note

- Philips does not guarantee the compatibility with all Bluetooth devices.
- Before pairing a device with this system, read its user manual for Bluetooth compatibility.
- The product can memorize a maximum of 4 paired devices.
- Make sure that Bluetooth function is enabled on your device, and your device is set as visible to all other Bluetooth devices.
- The operational range between this system and a Bluetooth device is approximately 10 meters (30 feet).
- Any obstacle between this system and a Bluetooth device can reduce the operational range.
- Keep away from any other electronic device that may cause interference.

---

## Play audio via Bluetooth

- 1 Press **SOURCE** repeatedly to select BT source.
- 2 On your device, search for Bluetooth devices. In the device list, select "**Philips DTB855**".
  - If a message prompts for the permission for Bluetooth connection with DTB855, confirm it.

↳ When the connection is successful, the BT icon stops flashing on the LCD screen.
- 3 Play a track on the connected device.
  - To pause or resume play, press ►||.
  - To skip to the previous or next track, press ◀◀ / ▶▶.

## 9 Other features

---

### Set the sleep timer

This system can switch to standby automatically after a set period of time.

- 1 When the system is turned on, press **SLEEP** repeatedly to select a set period of time (in minutes).

↳ When sleep timer is activated, **zz** is displayed.

#### To deactivate sleep timer

- 1 Press **SLEEP** repeatedly until "OFF" is displayed.

↳ When sleep timer is deactivated, [SLEEP](sleep) **zz** disappears on the display.

---

### Set the alarm timer

This unit can be used as an alarm clock. The disc/radio/USB/iPod is activated to play at a preset time.



#### Note

- Ensure that you have set the clock correctly.

- 1 Press **⏻** to switch to standby mode.
- 2 Press and hold **SLEEP/TIMER** for more than two seconds.

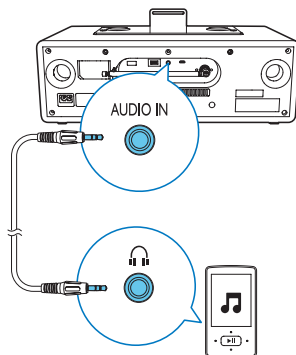
↳ A prompt to select the source is displayed.
- 3 Press **CD**, **iPod**, **TUNER**, **DAB**, or **USB** to select a source.
- 4 Press **SLEEP/TIMER** to confirm.

↳ The clock digits are displayed.

↳ The hour digits begin to blink.



- 5 Press ▲ / ▼ to set the hour.
- 6 Press **SLEEP/TIMER** to confirm.  
↳ The minute digits begin to blink.
- 7 Press ▲ / ▼ to set the minute and press **SLEEP/TIMER** to confirm.  
↳ The timer is set and activated.  
↳ ☼ is displayed.
- 8 Press ▲ / ▼ to set the volume and press **SLEEP/TIMER** to confirm.



## Activate and deactivate the alarm timer

- 1 Switch the system to standby mode.
- 2 Press **TIMER** repeatedly to activate or deactivate the timer.  
↳ If the timer is activated, ☼ is displayed.  
↳ If the timer is deactivated, ☼ disappears on the display.

### Note

- If DISC/USB/iPod source is selected and the track cannot be played, tuner is activated automatically.

## Play from an external device

You can also listen to an external audio device through this unit.

- 1 Press **USB/MP3 LINK** to select the MP3 link source.
- 2 Connect the supplied audio in cable to:
  - the **AUDIO IN** jack (3.5mm) on the unit.
  - the headphone jack on an external device.
- 3 Start to play the device (see the device user manual).

# 10 Product information

## Note

- Product information is subject to change without prior notice.

## Specifications

### Amplifier

Rated Output Power	2X15W RMS
Frequency Response	60 Hz - 16 kHz, ±3 dB
Signal to Noise Ratio	>65dBA
Aux Input	0.5 V RMS 20kohm

### Disc

Laser Type	Semiconductor
Disc Diameter	12cm/8cm
Support Disc	CD-DA, CD-R, CD-RW, MP3-CD
Audio DAC	24Bits / 44.1kHz
Total Harmonic Distortion	<1%
Frequency Response	60Hz -16kHz (44.1kHz)
S/N Ratio	>65dBA

### Tuner

Tuning Range	FM: 87.5 - 108 MHz;
Tuning grid	50 KHz
Total Harmonic Distortion	<2%
Signal to Noise Ratio	>50 dB
Number of presets	30

## Speakers

Speaker Impedance	4 ohm
Speaker Driver	2 X 3" full range
Sensitivity	>82 dB/m/W

## General information

AC power	100-240 V~, 50/60Hz
Operation Power Consumption	30 W
ECO standby power consumption	< 1W
USB Direct	Version 2.0/1.1
Dimensions	
- Main Unit (W x H x D)	380 x 186 x 227mm
Weight	
- Main Unit	4.19 kg

## Maintenance

### Clean the cabinet

- Use a soft cloth slightly moistened with a mild detergent solution. Do not use a solution containing alcohol, spirits, ammonia or abrasives.

### Clean discs

- When a disc becomes dirty, clean it with a cleaning cloth. Wipe the disc from the centre out.



- Do not use solvents such as benzene, thinner, commercially available cleaners,

or antistatic spray intended for analogue records.

### Clean the disc lens

- After prolonged use, dirt or dust may accumulate at the disc lens. To ensure good play quality, clean the disc lens with Philips CD lens cleaner or any commercially available cleaner. Follow the instructions supplied with cleaner.

---

## USB playability information

### Compatible USB storage devices:

- USB flash memory (USB 2.0 or USB1.1)
- USB flash players (USB 2.0 or USB1.1)
- memory cards (requires an additional card reader to work with this system)

### Supported formats:

- USB or memory file format FAT12, FAT16, FAT32 (sector size: 512 bytes)
- MP3 bitrate (data rate): 32-320 Kbps and variable bitrate
- Directory nesting up to a maximum of 8 levels
- Number of albums/ folders: maximum 99
- Number of tracks/titles: maximum 999
- ID3 tag v2.0 or later
- File name in Unicode UTF8 (maximum length: 128 bytes)

### Unsupported formats:

- Empty albums: an empty album is an album that does not contain MP3 files, and is not shown in the display.
- Unsupported file formats are skipped. For example, Word documents (.doc) or MP3 files with extension .dlf are ignored and not played.
- AAC, WAV, PCM audio files
- DRM protected WMA files (\*.wav, \*.m4a, \*.m4p, \*.mp4, \*.aac)
- WMA files in Lossless format

---

## Supported MP3 disc formats

- ISO9660, Joliet
- Maximum title number: 512 (depending on file name length)
- Maximum album number: 255
- Supported sampling frequencies: 32 kHz, 44.1kHz, 48 kHz
- Supported Bit-rates: 32~256 (kbps), variable bit rates

# 11 Troubleshooting



## Warning

- Never remove the casing of this apparatus.

To keep the warranty valid, never try to repair the system yourself.

If you encounter problems when using this apparatus, check the following points before requesting service. If the problem remains unsolved, go to the Philips web site ([www.philips.com/welcome](http://www.philips.com/welcome)). When you contact Philips, ensure that the apparatus is nearby and the model number and serial number are available.

### No power

- Ensure that the AC power cord of the unit is connected properly.
- Ensure that there is power at the AC outlet.
- As a power-saving feature, the system switches off automatically 15 minutes after track play reaches the end and no control is operated.

### No sound or poor sound

- Adjust the volume.
- Disconnect the headphones.
- Check that the speakers are connected correctly.
- Check if the stripped speaker wires are clamped.

### No response from the unit

- Disconnect and reconnect the AC power plug, then turn on the unit again.
- As a power-saving feature, the system switches off automatically 15 minutes after track play reaches the end and no control is operated.





Specifications are subject to change without notice

2013 © WOOX Innovations Limited. All rights reserved.

This product was brought to the market by WOOX Innovations Limited or one of its affiliates, further referred to in this document as WOOX Innovations, and is the manufacturer of the product. WOOX Innovations is the warrantor in relation to the product with which this booklet was packaged. Philips and the Philips Shield Emblem are registered trademarks of Koninklijke Philips N.V."

DTB855\_93\_UM\_V1.0

