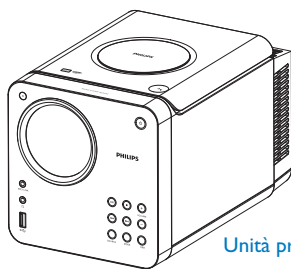
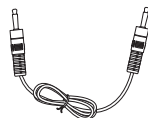


Guida di avvio rapido



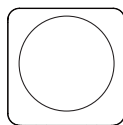
Unità principale



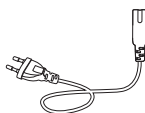
1 cavo MP3 Link



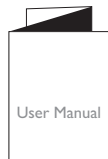
Telecomando



2 altoparlanti



Cavo di alimentazione

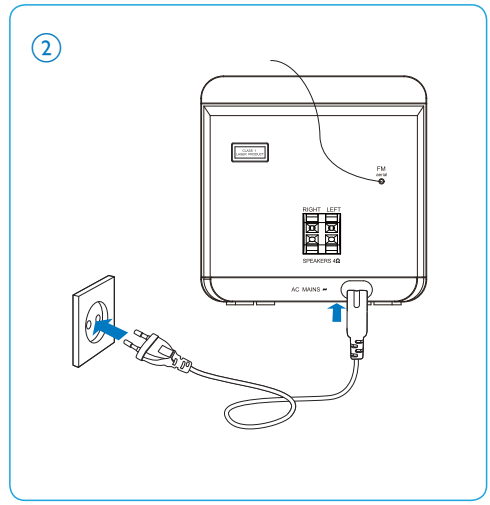
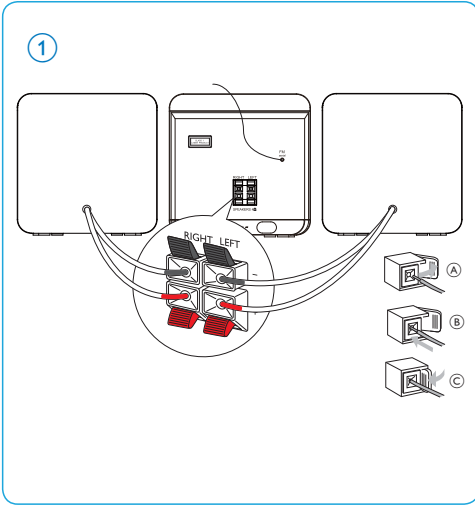


Manuale dell'utente

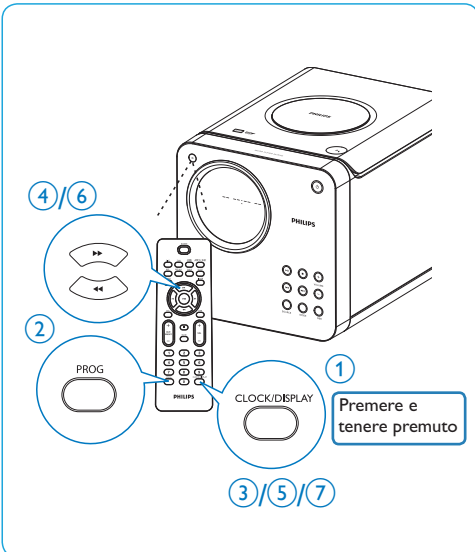


Guida di avvio rapido

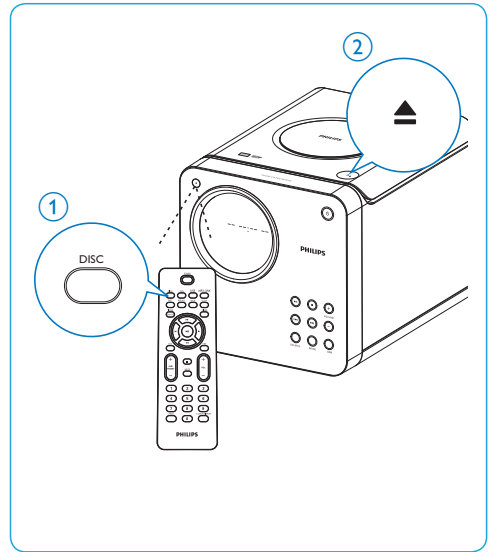
A Collegamento



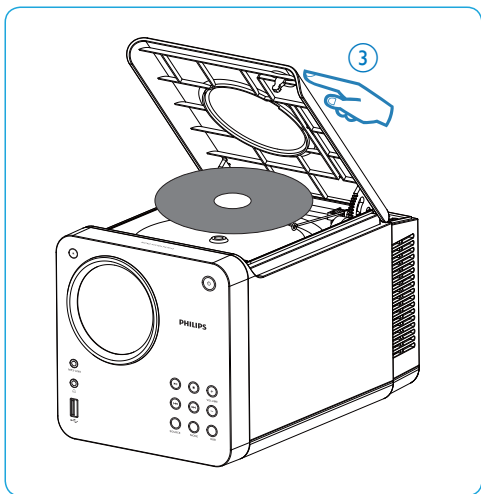
B Impostazione dell'orologio



C Riproduzione di dischi



D Attivazione della radio



E Riproduzione da USB

