



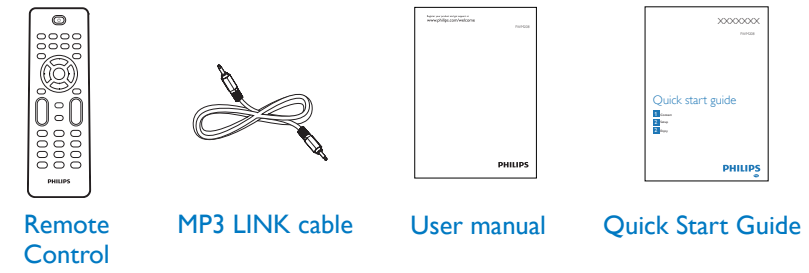
Mini Hi-Fi System
FWM208

Quick start guide

- 1** Connect
- 2** Setup
- 3** Enjoy



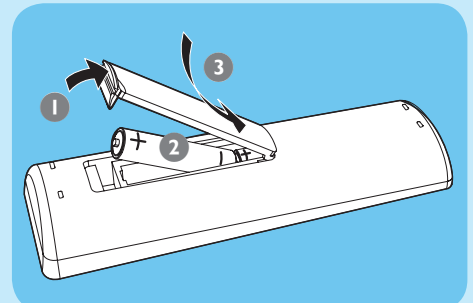
What's in the box



1 Connect

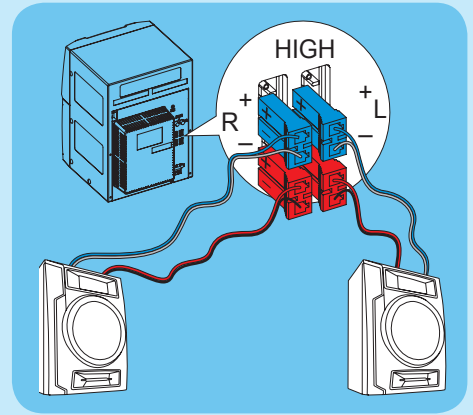
A Prepare the remote control

- 1 Open the battery compartment.
- 2 Insert 2 AAA batteries with correct polarity (+/-) as indicated.
- 3 Close the battery compartment.



B Connect Speaker

- 1 Plug the two gray-blue cables into the "HIGH CH" sockets as indicated by the "+/-" symbols, right speaker to "R" and left speaker to "L".
- 2 Plug the two red-black cables into the "LOW CH" sockets as indicated by the "+/-" symbols, right speaker to "R" and left speaker to "L".

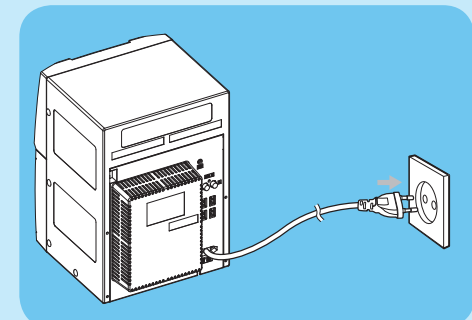


1 Connect

C Connect power

- ! Caution**
- Risk of product damage! Ensure that the power supply voltage corresponds to the voltage printed on the back or the underside of the unit.
 - Risk of electric shock! When you unplug the AC power cord, always pull the plug from the socket. Never pull the cord.

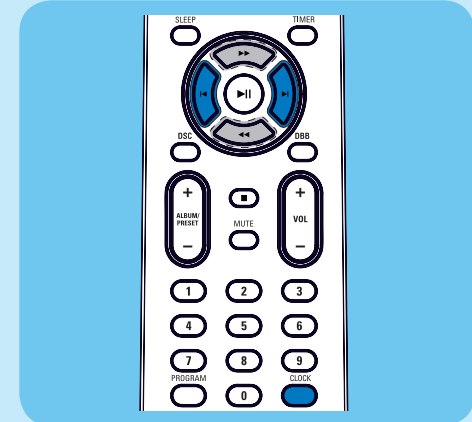
- 1 Connect the power cord to the wall outlet.



2 Setup

A Set clock

- 1 In standby mode, press and hold **CLOCK**.
↳ The hour digits are displayed and begin to blink.
- 2 Press **▶|◀** on the remote control to set the hours.
- 3 Press **CLOCK**.
↳ The minute digits are displayed and begin to blink.
- 4 Press **▶|◀** to set the minutes.
- 5 Press **CLOCK** to confirm the time.



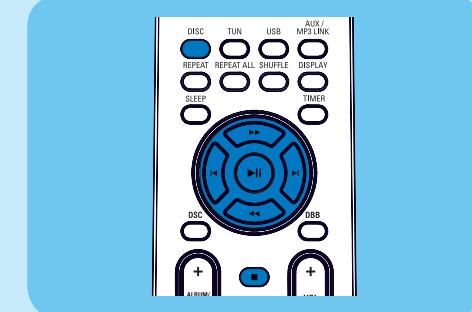
3 Enjoy

A Play disc

- 1 Press **DISC** to select the disc source.
- 2 Press **OPEN/CLOSE** on the front panel to open the disc tray.
- 3 Insert a disc with the printed side facing up, then close the disc tray.
↳ Play starts automatically.
 - To pause/resume play, press **▶||**.
 - To stop play, press **■**.
 - To skip to a track, press **▶|◀**.
 - To search within a track, press and hold **◀◀▶▶**. Release to resume normal play.

B Play from USB

- 1 Connect the USB device into the **USB** socket.
- 2 Press **USB** to select the USB source.
↳ Play starts automatically.
 - To pause/resume play, press **▶||**.
 - To stop play, press **■**.
 - To select an album, press **ALBUM/PRESET +/-**.
 - To skip to a track, press **▶|◀**.
 - To search within a track, press and hold **◀◀▶▶**. Release to resume normal play.



C Program and listen to radio stations

- You can program a maximum of 20 preset radio stations.
- 1 In tuner mode, press and hold **PROGRAM** for 2 seconds to activate automatic program mode.
↳ [AUTO] (auto) begins to blink.
↳ All available stations are programmed in the order of waveband reception strength.
↳ The first programmed radio station is broadcast automatically.
 - 2 Press **ALBUM/PRESET +/-** to select a preset radio station.



© Royal Philips Electronics N.V. 2010
All rights reserved.
Specifications are subject to change without notice.
Trademarks are the property of Koninklijke Philips Electronics N.V. or their respective owners.
Printed in China FWM208_QSG_V1.0