

Always there to help you  
Register your product and get support at  
[www.philips.com/support](http://www.philips.com/support)

Question?  
Contact  
Philips



## Quick Start Guide

**PHILIPS**



This product has been manufactured by, and is sold under the responsibility of Gibson Innovations Ltd., and Gibson Innovations Ltd. is the warrantor in relation to this product. Philips and the Philips Shield Emblem are registered trademarks of Koninklijke Philips N.V. and are used under license.

AE5220\_05\_QSG\_V6.0

AE5220

## Safety

### Important Safety Instructions

- ① Read these instructions.
- ② Keep these instructions.
- ③ Heed all warnings.
- ④ Follow all instructions.
- ⑤ Do not use this apparatus near water.
- ⑥ Clean only with dry cloth.
- ⑦ Do not block any ventilation openings. Install in accordance with the manufacturer's instructions.
- ⑧ Do not install near any heat sources such as radiators, heat registers, stoves, or other apparatus (including amplifiers) that produce heat.
- ⑨ Protect the power cord from being walked on or pinched, particularly at plugs, convenience receptacles, and the point where they exit from the apparatus.
- ⑩ Only use attachments/accessories specified by the manufacturer.
- ⑪ Unplug this apparatus during lightning storms or when unused for long periods of time.
- ⑫ Refer all servicing to qualified service personnel. Servicing is required when the apparatus has been damaged in any way, such as power-supply cord or plug is damaged, liquid has been spilled or objects have fallen into the apparatus, the apparatus has been exposed to rain or moisture, does not operate normally, or has been dropped.
- ⑬ **Battery usage CAUTION – To prevent battery leakage which may result in bodily injury, property damage, or damage to the unit:**
  - Install all batteries correctly, + and - as marked on the unit.
  - Do not mix batteries (old and new or carbon and alkaline, etc.).
  - Remove batteries when the unit is not used for a long time.
- ⑭ **Apparatus shall not be exposed to dripping or splashing.**
- ⑮ **Do not place any sources of danger on the apparatus (e.g. liquid filled objects, lighted candles).**
- ⑯ Use only power supplies listed in the user manual.
- ⑰ **Where the plug of the Direct Plug-in Adapter is used as the disconnect device, the disconnect device shall remain readily operable.**

### Warning

- Never remove the casing of this unit.
- Never lubricate any part of this unit.
- Place this unit on a flat, hard and stable surface.
- Never place this unit on other electrical equipment.
- Only use this unit indoors. Keep this unit away from water, moisture and liquid-filled objects.
- Keep this unit away from direct sunlight, naked flames or heat.

### Notice

Hereby, Gibson Innovations declares that this product is in compliance with the essential requirements and other relevant provisions of Directive 2014/53/EU. You can find the Declaration of Conformity on [www.philips.com/support](http://www.philips.com/support).

Any changes or modifications made to this device that are not expressly approved by Gibson Innovations may void the user's authority to operate the equipment.

Your product is designed and manufactured with high quality materials and components, which can be recycled and reused.

When this crossed-out wheeled bin symbol is attached to a product it means that the product is covered by the European Directive 2012/19/EC.



Please inform yourself about the local separate collection system for electrical and electronic products.

Please act according to your local rules and do not dispose of your old products with your normal household waste. Correct disposal of your old product helps to prevent potential negative consequences for the environment and human health. Your product contains batteries covered by the European Directive 2013/56/EC, which cannot be disposed with normal household waste. Please inform yourself about the local rules on separate collection of batteries because correct disposal helps to prevent negative consequences for the environmental and human health.



### Environmental information

All unnecessary packaging has been omitted. We have tried to make the packaging easy to separate into three materials: cardboard (box), polystyrene foam (buffer) and polyethylene (bags, protective foam sheet.)

Your system consists of materials which can be recycled and reused if disassembled by a specialized company. Please observe the local regulations regarding the disposal of packaging materials, exhausted batteries and old equipment.

### Note

- The type plate is located on the back of the unit.

### Amplifier

Maximum Output Power	6 W
Frequency Response	40 - 20000 Hz, ±3dB

### Tuner

Tuning Range	FM: 87.5 - 108MHz
Tuning grid (FM)	50 KHz

### Sensitivity

- Mono, 26dB S/N Ratio	< 22dBf
- Stereo, 46dB S/N Ratio	< 43dBf

Search Selectivity < 28dBf

Total Harmonic Distortion < 2%

Signal to Noise Ratio > 55 dB

### DAB

Frequency Range Band III (174~240MHz)

### Speakers

Speaker Impedance	4 ohm
Speaker Driver	3 inch full range
Sensitivity	86 ± 3dB/m/W

### General information

AC/DC adapter (Input)	100-240V~, 50/60 Hz
(Output)	DC 5.5V === 1.0A
(Model number)	TPA107-55055-UK(F)

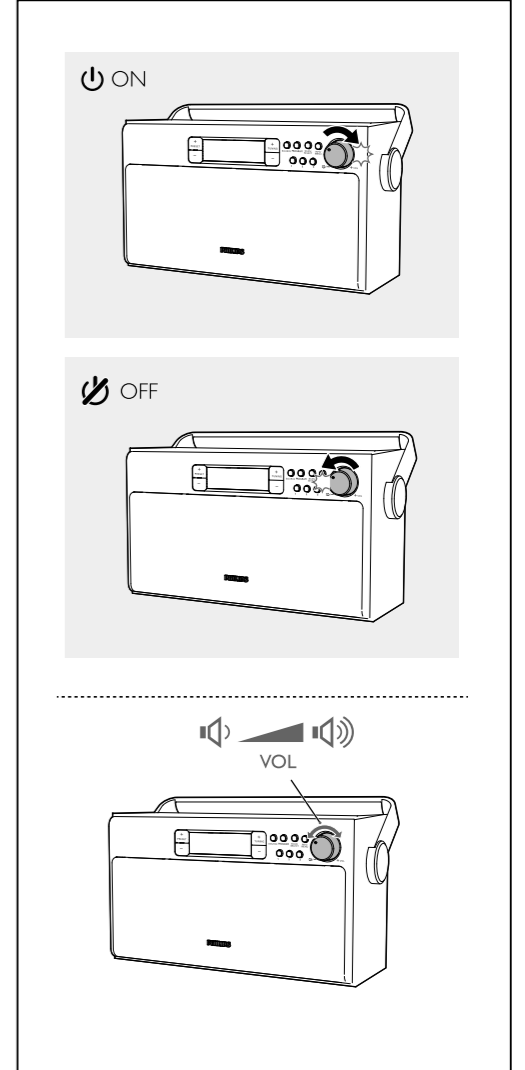
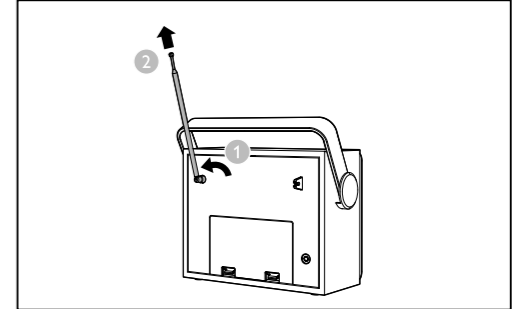
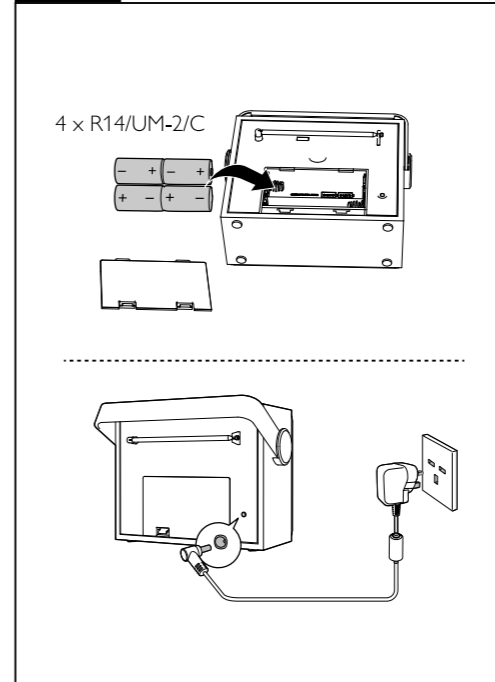
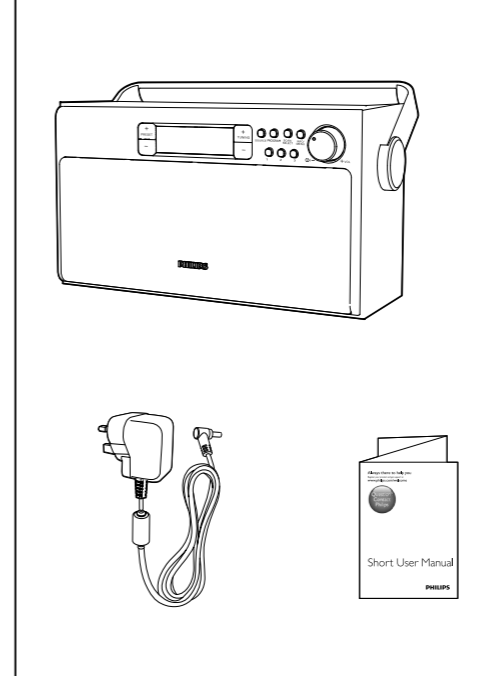
Operation Power Consumption 2.87 W

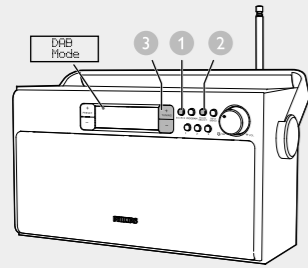
### Dimensions

- Main Unit (W x H x D) 286 x 155 x 152 mm

### Weight

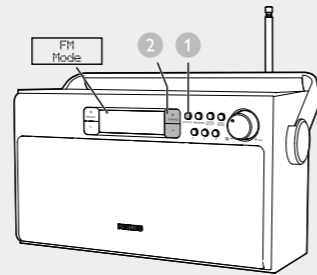
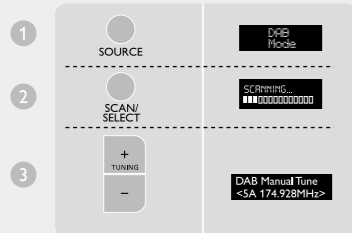
- Main Unit 1.39 kg





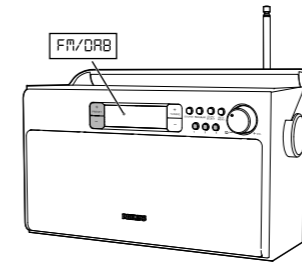
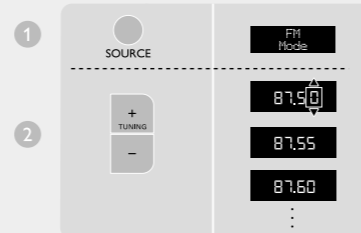
### Tune to DAB radio stations

- 1 Press **SOURCE** repeatedly to select DAB radio.
- 2 Press **SCAN/SELECT** to start full scan.
- 3 Press **TUNING +/-** to navigate through the available DAB stations.



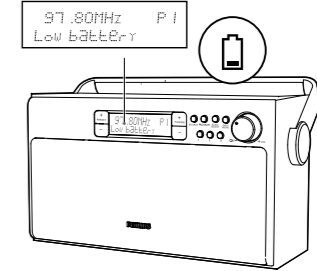
### Tune to FM radio stations

- 1 Press **SOURCE** repeatedly to select FM radio.
- 2 Press **TUNING +/-** to tune to a radio station.
- 3 Press and hold **TUNING +/-** to tune to the next strongest radio station.

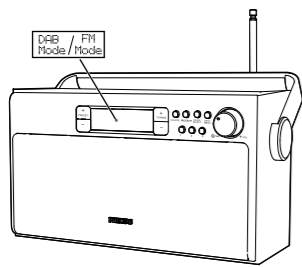


### Select a preset DAB/FM radio station

In DAB/FM mode, press numeric keys **1, 2** or **3** to select preset station 1, 2 or 3, or press **PRESET +/-** repeatedly to select your desired preset number.



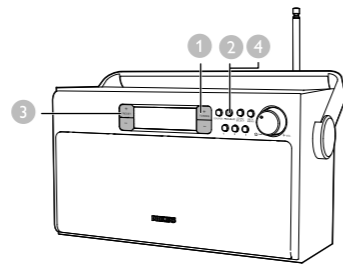
When the battery is low, 'Low battery' appears. Replace batteries or connect to AC power.



### Store DAB/FM radio stations automatically

In DAB mode, press **SCAN/SELECT** to start full scan of all available DAB radio stations (no station stored to presets).

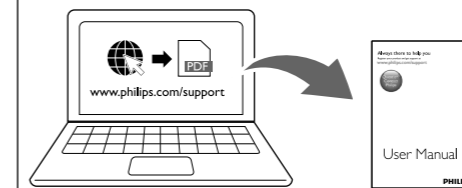
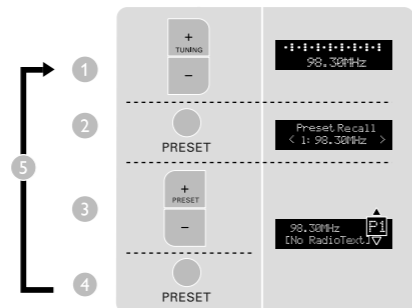
In FM mode, press **SCAN/SELECT** to store all available FM radio stations to presets.



### Store DAB/FM radio stations manually

- 1 Tune to a DAB/FM radio station.
- 2 Press **PROGRAM** to activate programming mode.
- 3 Press **PRESET +/-** to select a preset number.
- 4 Press **PROGRAM** to confirm.
- 5 Repeat steps 1 to 4 to store other DAB/FM stations.

Tip: At step 2, you can also press and hold preset key **1, 2** or **3** to save the current station to the corresponding position directly.



To download the full user manual, visit [www.philips.com/support](http://www.philips.com/support).

