



Philips
Headphones with mic

8.6mm drivers/closed-back
In-ear

SHE3705BK

Big beats, pumping bass

Compact design with vacuum metalized protection

Ultra small, big bass Philips MyJam Beamers in-ear headphones feature oval tube inserts for comfort and vacuum metalized coating for sleek looks with extra protection.

Always ready to go

- Reinforced cable relief enhances durability and connectivity
- Built-in mic switches from music to phone calls

Revel in quality sound

- Big bass and clear sound through efficient drivers
- A perfect in-ear seal blocks out external noise

Listen for longer

- 3 interchangeable rubber ear caps offer an optimal fit
- Shiny, colorful coating looks sleek and also protects
- Oval sound tube insert provides an ergonomic comfort fit

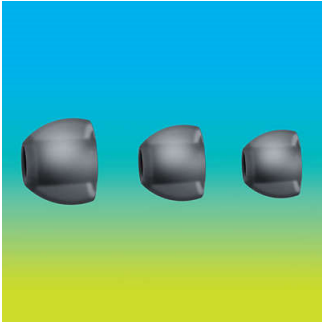
PHILIPS

Headphones with mic
8.6mm drivers/closed-back In-ear

SHE3705BK/27

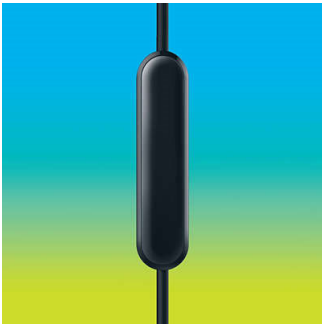
Highlights

3 sizes of ear caps



Ear caps come in a choice of 3 sizes - small, medium and large - for a personalized and perfect fit

Built-in microphone



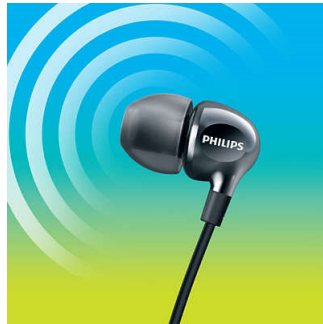
Built-in microphones let you easily switch from music listening to taking phone calls, so you will always stay connected.

Colorful shiny coating



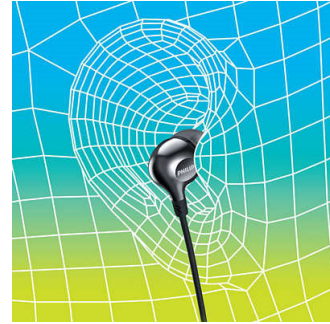
A high quality, glossy and colorful coating creates a sleek look while adding an extra protective surface.

Efficient drivers



Philips Vibes in-ear headphones house efficient drivers inside a compact design. They fit perfectly while pumping out clear sound and booming bass.

Oval sound tube



An oval sound tube insert provides ergonomic comfort to fit the true shape of the ear.

Perfect in-ear fit



Ultra small earphones fit perfectly inside the ear, creating a seal that blocks out external noise.

Reinforced cable relief

To extend the life of your headphones, a soft rubber relief between them and the cable protects the connection from damage through repeated bending.

Specifications

Sound

- Acoustic system: Closed
- Frequency response: 11–22 000 Hz
- Diaphragm: PET
- Magnet type: Neodymium
- Type: Dynamic
- Voice coil: copper
- Speaker diameter: 8.6 mm
- Sensitivity: 105 dB
- Maximum power input: 20 mW
- Impedance: 16 ohm

Connectivity

- Type of cable: copper
- Cable Connection: two parallel, symmetric
- Finishing of connector: chrome-plated
- Cable length: 1.2 m
- Connector: 3.5 mm

Outer Carton

- Length: 37.4 cm
- Number of consumer packagings: 24
- Width: 17.4 cm
- Gross weight: 1.16 kg
- Height: 13.9 cm
- GTIN: 1 08 89446 00614 5
- Nett weight: 0.312 kg
- Tare weight: 0.848 kg

Inner Carton

- Length: 18.1 cm
- Number of consumer packagings: 3
- Width: 8.1 cm
- Height: 6 cm
- Nett weight: 0.039 kg
- Gross weight: 0.128 kg
- Tare weight: 0.089 kg
- GTIN: 2 08 89446 00614 2

Packaging dimensions

- Height: 17.3 cm
- Packaging type: Blister
- Type of shelf placement: Both
- Width: 5 cm
- Depth: 2.7 cm
- Number of products included: 1
- Gross weight: 0.027 kg
- Nett weight: 0.013 kg
- Tare weight: 0.014 kg
- UPC: 8 89446 00614 8

Accessories

- Eartips: 3 sizes S, M, L

Design

- Color: Black

