

Always there to help you

Register your product and get support at
www.philips.com/welcome



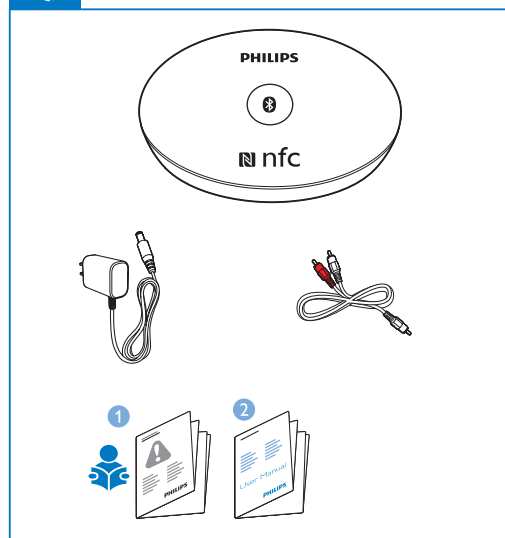
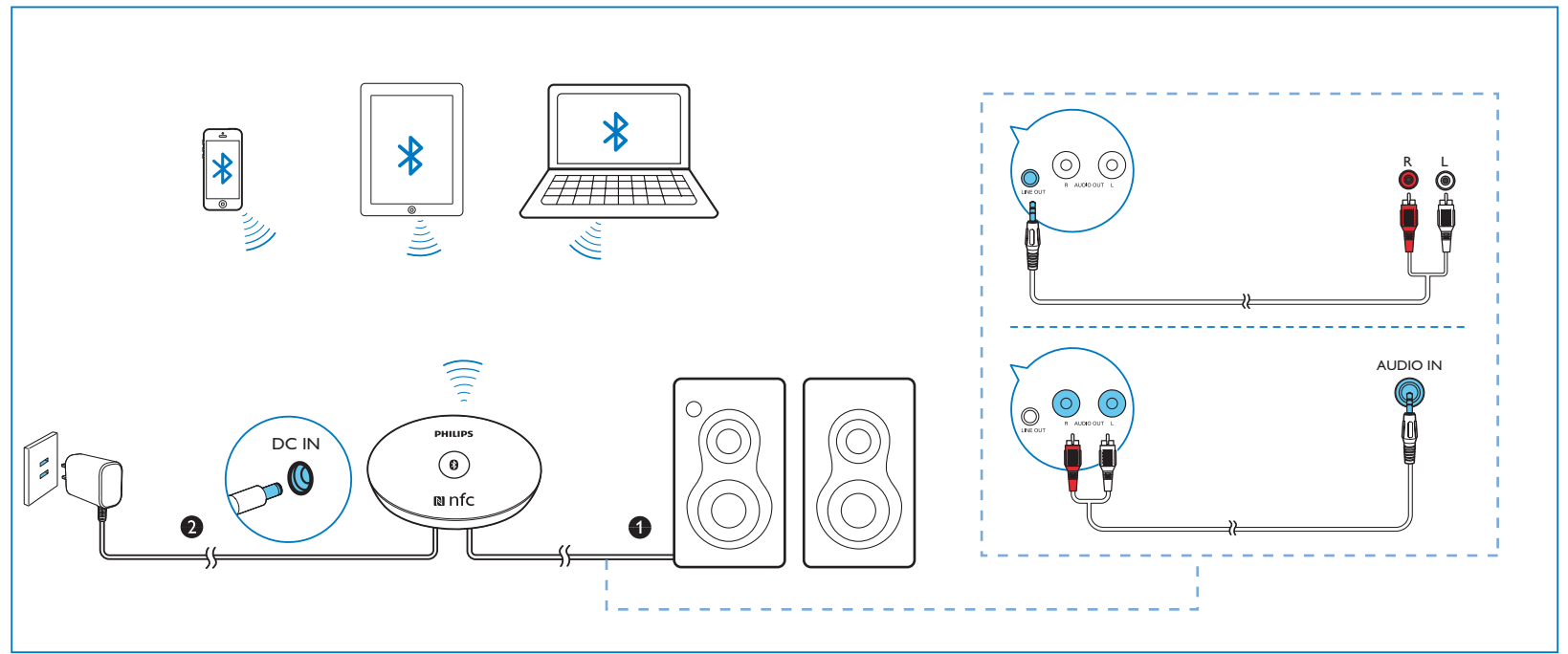
AEA2500



User manual 用户手册

PHILIPS

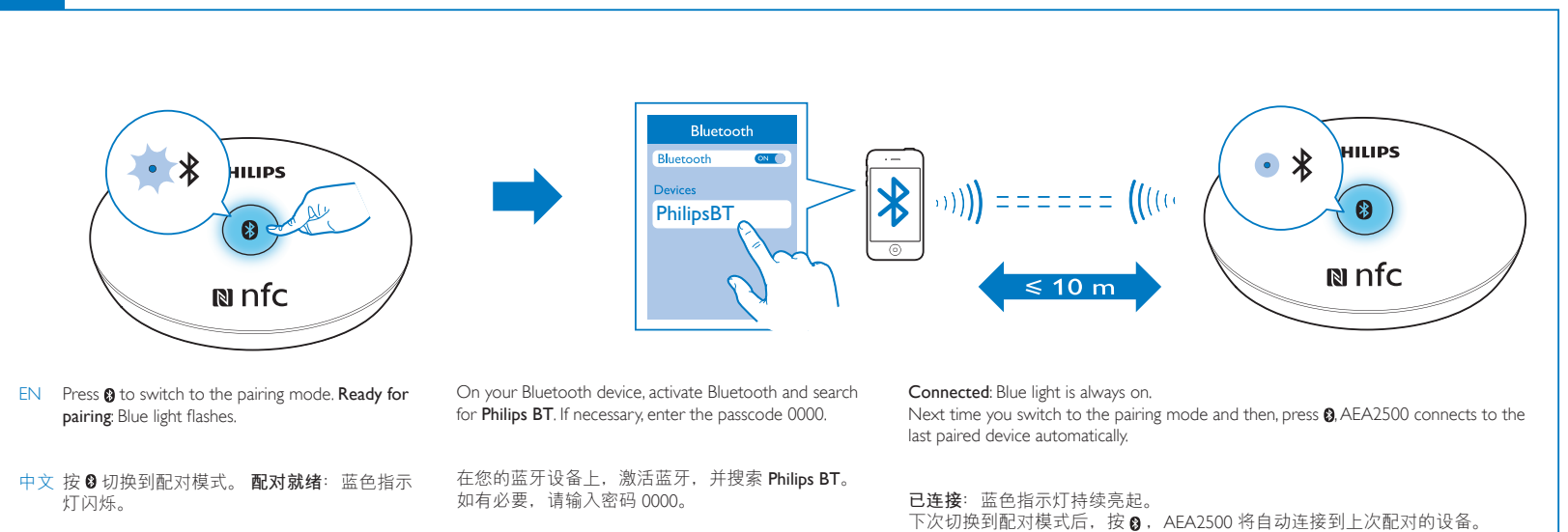
Install 安装



2013 © WOOX Innovations Limited. All rights reserved. Philips and the Philips' Shield Emblem are registered trademarks of Koninklijke Philips N.V. and are used by WOOX Innovations Limited under license from Koninklijke Philips N.V. AEA2500_UM_SafetySheet_93_V1.0



Pair & Connect 配对与连接



EN Press **0** to switch to the pairing mode. Ready for pairing: Blue light flashes.

中文 按 **0** 切换到配对模式。配对就绪：蓝色指示灯闪烁。

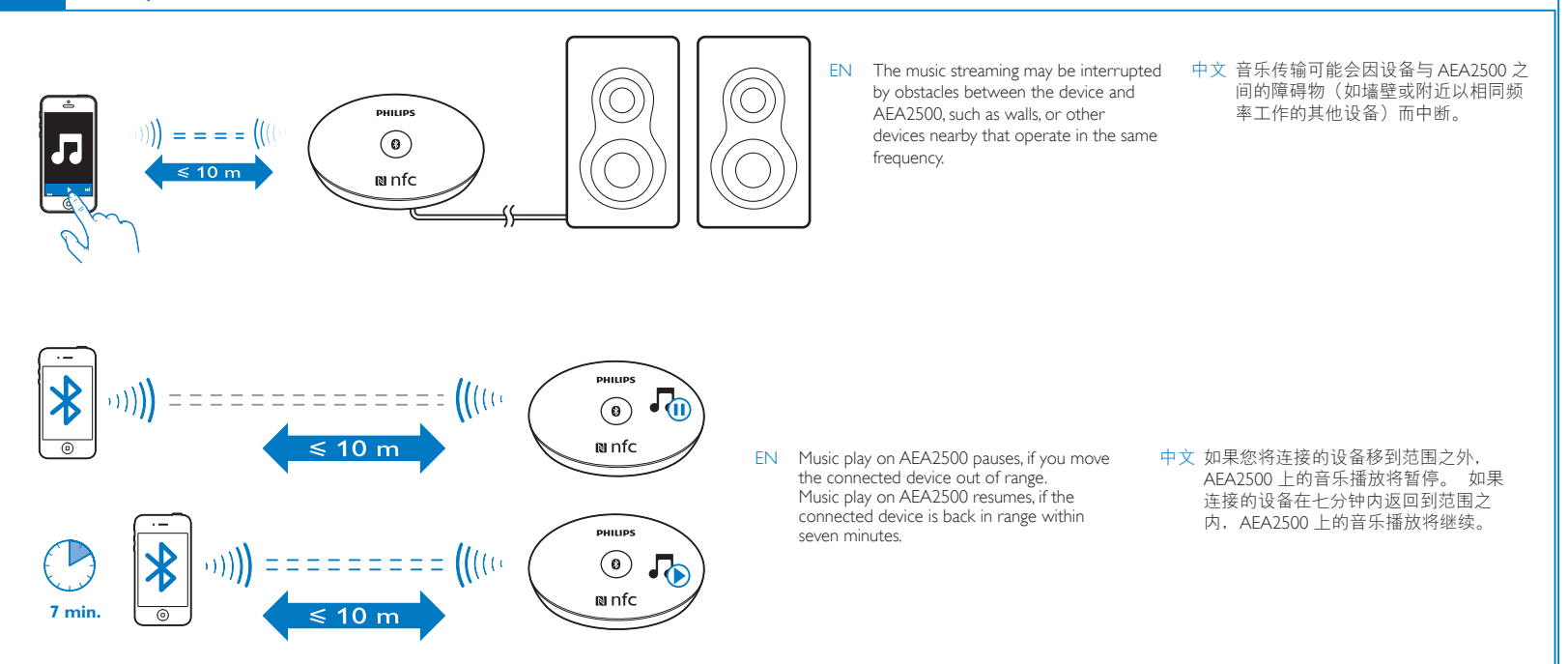
On your Bluetooth device, activate Bluetooth and search for Philips BT. If necessary, enter the passcode 0000.

在您的蓝牙设备上，激活蓝牙，并搜索 Philips BT。如有必要，请输入密码 0000。

Connected: Blue light is always on. Next time you switch to the pairing mode and then, press **0**. AEA2500 connects to the last paired device automatically.

已连接：蓝色指示灯持续亮起。下次切换到配对模式后，按 **0**，AEA2500 将自动连接到上次配对的设备。

Play 播放



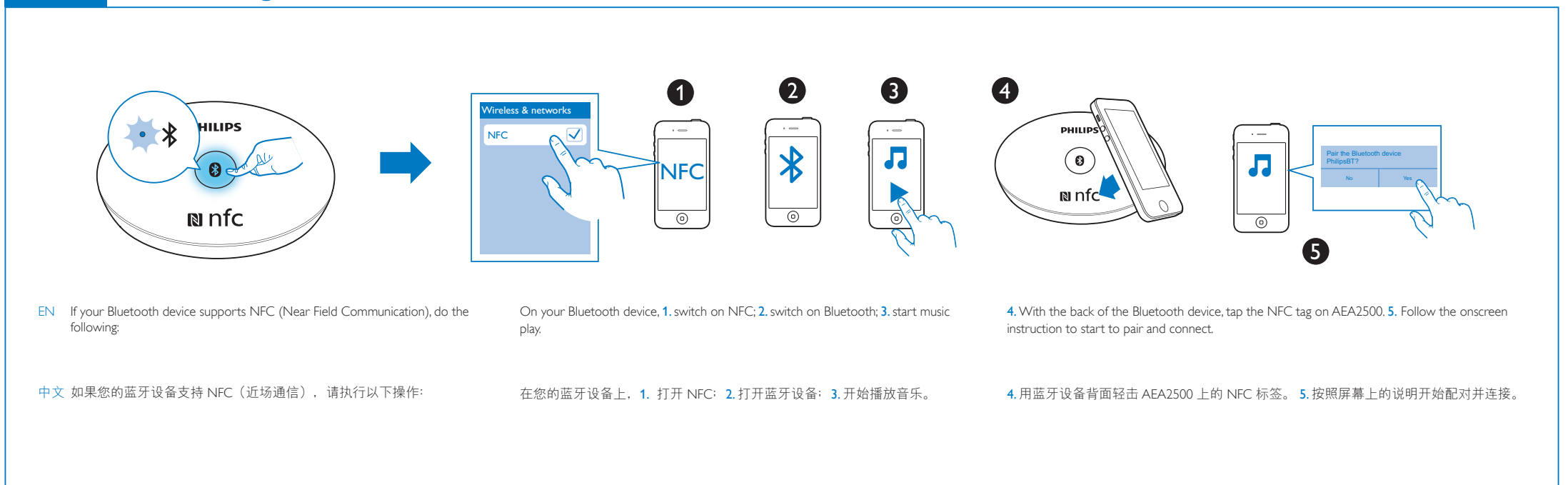
EN The music streaming may be interrupted by obstacles between the device and AEA2500, such as walls, or other devices nearby that operate in the same frequency.

中文 音乐传输可能会因设备与 AEA2500 之间的障碍物（如墙壁或附近以相同频率工作的其他设备）而中断。

EN Music play on AEA2500 pauses, if you move the connected device out of range. Music play on AEA2500 resumes, if the connected device is back in range within seven minutes.

中文 如果您将连接的设备移到范围之外，AEA2500 上的音乐播放将暂停。如果连接的设备在七分钟内返回到范围之内，AEA2500 上的音乐播放将继续。

Pair through NFC 通过 NFC 配对



EN If your Bluetooth device supports NFC (Near Field Communication), do the following:

中文 如果您的蓝牙设备支持 NFC（近场通信），请执行以下操作：

On your Bluetooth device, 1. switch on NFC; 2. switch on Bluetooth; 3. start music play.

在您的蓝牙设备上，1. 打开 NFC；2. 打开蓝牙设备；3. 开始播放音乐。

4. With the back of the Bluetooth device, tap the NFC tag on AEA2500. 5. Follow the onscreen instruction to start to pair and connect.

4. 用蓝牙设备背面轻击 AEA2500 上的 NFC 标签。5. 按照屏幕上的说明开始配对并连接。

Specifications

Amplifier

- Output Voltage: 1000 mV RMS
- Signal to Noise Ratio: > 62 dBA
- Total Harmonic Distortion: < 2 %

Bluetooth

- Standard: Bluetooth Standard Version 3.0
- Frequency band: 2.402 ~ 2.480 GHz ISM Band
- Range: 10 m (free space)

General information

- Power supply
 - AC/DC adapter
 - AS030-090-EB033(Philips)
 - Input: 100-240V ~ 50/60 Hz, 0.15 A
 - Output: 9V DC, 0.33 A
- Power consumption Operation: < 3 W
- Dimensions
 - Main Unit (W x H x D): 74 x 28 x 72 mm
- Weight
 - Main Unit: 0.04 kg

中文

规格

功放器

- 输出电压: 1000 毫伏 RMS
- 信噪比: > 62 dBA

Notice

The Bluetooth® word mark and logos are registered trademarks owned by Bluetooth SIG, Inc. and any use of such marks by WOOX Innovations is under license.

© 2013 CSR plc and its group companies.

The aptX® mark and the aptX logo are trade marks of CSR plc or one of its group companies and may be registered in one or more jurisdictions.

The N Mark is a trademark or registered trademark of NFC Forum, Inc. in the United States and in other countries.

Specifications are subject to change without notice. Philips and the Philips' Shield Emblem are registered trademarks of Koninklijke Philips N.V. and are used by WOOX Innovations Limited under license from Koninklijke Philips N.V. WOOX Innovations reserves the right to change products at any time without being obliged to adjust earlier supplies accordingly.

注意事项

安全

阅读这些说明。
遵循所有说明。
不要在靠近水的地方使用本装置。

- 总谐波失真: < 2 %

蓝牙

- 标准: 蓝牙标准版本 3.0
- 频段: 2.402 ~ 2.480 GHz ISM 频段
- 范围: 10 米 (开阔空间)

一般信息

- 电源
 - 交流/直流适配器
 - AS030-090-EB033 (飞利浦)
 - 输入: 约 100-240 伏 50/60 赫兹, 0.15 安
 - 输出: 直流 9 伏, 0.33 安
- 功耗 工作: < 3 瓦
- 尺寸
 - 主装置 (宽 x 高 x 深): 74 x 28 x 72 毫米
- 重量
 - 主装置: 0.04 千克

不要放在任何热源附近, 如散热器、蓄热器、炉具或其它发热设备 (包括功放器)。
防止电源线被踩踏或挤压, 特别是在插头、电源插座和设备电源线出口位置。
仅使用制造商指定的附件/配件。
仅使用用户手册中列出的电源。
切勿将产品暴露在漏水或溅水环境下。
不要将任何危险源放在本产品上 (例如装有液体的物体、点燃的蜡烛)。
如果将直插式适配器的插头用作断开设备, 则断开设备应可以随时使用。

警告

- 切勿拆下本产品的外壳。
- 切勿润滑本装置的任何部件。
- 切勿将本装置放在其它电器设备上面。
- 应让本装置远离阳光直射、明火或高温。
- 确保始终可轻易地接触到电源线、电源插头或适配器, 以便于将本装置从电源上断开。

合规性

注

- 型号铭牌位于产品底部。

Important

Safety

Read these instructions.

Follow all instructions.

Do not use this apparatus near water.

Do not place near any heat sources such as radiators, heat registers, stoves, or other apparatus (including amplifiers) that produce heat. Protect the power cord from being walked on or pinched, particularly at plugs, convenience receptacles, and the point where they exit from the apparatus.

Only use attachments/accessories specified by the manufacturer.

Use only power supplies listed in the user manual.

The product shall not be exposed to dripping or splashing.

Do not place any sources of danger on the product (e.g. liquid filled objects, lighted candles).

Where the plug of the Direct Plug-in Adapter is used as the disconnect device, the disconnect device shall remain readily operable.

Warning

- Never remove the casing of this apparatus.
- Never lubricate any part of this apparatus.
- Never place this apparatus on other electrical equipment.
- Keep this apparatus away from direct sunlight, naked flames or heat.
- Ensure that you always have easy access to the power cord, plug or adaptor to disconnect the apparatus from the power.

爱护环境

环境信息

为使包装尽量简化, 已省去所有不必要的包装材料。包装材料分为三类: 纸板 (盒)、泡沫塑料 (缓冲物) 和聚乙烯 (袋、保护膜)。
本系统的所有材料均可回收和再利用 (如果由专业公司拆卸)。有关包装材料和旧设备的处理, 请遵守当地相关规定。

回收

本产品采用可回收利用的高性能材料和组件制造而成。切勿将本产品与其它生活垃圾一起处理。请自行了解当地关于分类收集电子和电气产品的规定。正确弃置旧产品有助于避免对环境 and 人类健康造成潜在的负面影响。

注意

蓝牙® 字样和徽标均为 Bluetooth SIG, Inc. 所有, WOOX Innovations 对这些字样和徽标的任何使用均属合法。

© 2013 CSR plc 及其集团公司。

aptX® 标志和 aptX 徽标均为 CSR plc 或其任一集团公司的商标, 并且可能已在一个或多个司法管辖区注册。

N 标志是 NFC Forum, Inc. 在美国及其他国家/地区的商标或注册商标。

规格如有更改, 恕不另行通知。飞利浦及飞利浦盾牌标志是 Koninklijke Philips N.V. 的注册商标 经 Koninklijke Philips N.V. 许

Compliance

Note

- The type plate is located on the bottom of the product.

Care of the environment

Environmental information

All unnecessary packaging has been omitted. We have tried to make the packaging easy to separate into three materials: cardboard (box), polystyrene foam (buffer) and polyethylene (bags, protective foam sheet).

Your system consists of materials which can be recycled and reused if disassembled by a specialized company. Please observe the local regulations regarding the disposal of packaging materials, and old equipment.

Recycling

Your product is designed and manufactured with high quality materials and components, which can be recycled and reused. Never dispose of your product with other household waste. Please inform yourself about the local rules on the separate collection of electrical and electronic products. The correct disposal of your old product helps prevent potentially negative consequences on the environment and human health.

可, 由 WOOX Innovations Limited 使用。WOOX Innovations 保留随时更改产品的权利, 而且没有义务对较早前提供的产品进行相应的调整。

	有毒有害物质或元素 Hazardous/toxic Substance					
	铅 (Pb, Lead)	汞 (Hg, Mercury)	镉 (Cd, cadmium)	六价铬 (Chromium 6+)	多溴联苯 (PBB)	多溴二苯醚 (PBDE)
Housing 外壳	○	○	○	○	○	○
Loudspeakers 喇叭单元	x	○	○	○	○	○
PWBs 电路板组件	x	○	○	○	○	○
Accessories (Remote control & cables) 附件 (遥控器, 电源线, 连接线)	x	○	○	○	○	○

○: 表示该有毒有害物质在该部件所有均质材料中的含量均在 SJ/T11363 - 2006 标准规定的限量要求以下。
○: Indicates that this toxic or hazardous substance contained in all of the homogeneous materials for this part is below the limit requirement in SJ/T11363 - 2006.

x: 表示该有毒有害物质至少在该部件的某一均质材料中的含量超出 SJ/T11363 - 2006 标准规定的限量要求。

X: Indicates that this toxic or hazardous substance contained in at least one of the homogeneous materials used for this part is above the limit requirement in SJ/T11363 - 2006.



环保使用期限 Environmental Protection Use Period

This logo refers to the period (10 years)

电子信息产品中含有的有毒有害物质或元素在正常使用的条件下不会发生外泄或突变, 电子信息产品用户使用该电子信息产品不会对环境造成严重污染或对其人身、财产造成严重损害的期限。

This logo refers to the period (10 years) during which the toxic or hazardous substances or elements contained in electronic information products will not leak or mutate so that the use of these [substances or elements] will not result in any severe environmental pollution, any bodily injury or damage to any assets.