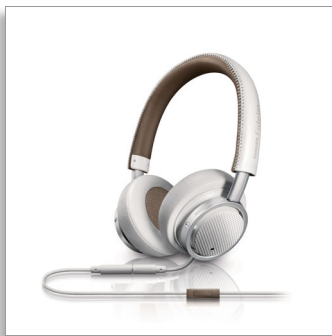


Philips Fidelio
On-ear headband headset

Fidelio
White



M1WT

High fidelity, premium quality. Wherever you go.

Philips Fidelio M1 headphones combines the very best in sound and comfort for an authentic music experience. Expertly engineered for superb noise isolation in a light yet sturdy design, enjoy true high definition sound wherever you go.

Capture every detail

- Speakers carefully tested for the best balance in sound
- Frequency response tuned to discerning listeners' preference
- Acoustically sealed construction keeps sound details in
- Acoustic closed-back architecture for best noise isolation
- Bass Reflex System for clear, dynamic and balanced bass
- Double-layered ear-shells engineered for sound precision
- High power neodymium drivers for true-to-original sound

Designed for immersion

- Deluxe breathable ear pads and memory foam for optimal fit

Quality finish for enhanced performance

- Oxygen-free, fabric-lined cable ensures high quality signal
- Premium materials including aluminum and fine leathers

Equipped for convenience

- In-line mic with pick-up button and a pouch included



reddot design award
winner 2013



product
design award

2013

PHILIPS
Fidelio

Highlights

Speakers carefully tested

Speakers carefully tested for the best balance in sound .

Tuned frequency response

Extensive research was done with discerning music-lovers to gain insight to their listening preferences - for example, the balance of sound characteristics that they favored. Our acoustics engineers then tuned the Fidelio M1 to account for all the minute details that affect how listeners discern sound, such as how the ear reflects sound and resonates in response. As a result, our M1 headphones are engineered to reproduce sound that is as faithful to the original recording as possible - including current recording styles.

Acoustic sealing



The acoustic seal is a specially designed ribbon lock that's built into the internal chamber to eliminate any unnecessary sound leakage and preserve sound details. The result is excellent bass extension.

Acoustics closed-back design



Acoustic closed-back architecture for best noise isolation.

Bass Reflex System (BRS)



The acoustic closed-back architecture features a Bass Reflex System that comprises ear-shells with strategically placed vents. These regulate the air pressure within the internal chamber providing the diaphragm with a controlled environment for optimal acoustic response. Working in conjunction with the acoustic seal capture, it isolates every natural sound detail and delivers precise and dynamic bass without compromising on sound clarity.

Deluxe breathable ear pads



The materials used for the Fidelio M1 are carefully selected to ensure long-wearing comfort and enhanced sound performance. Deluxe breathable ear pads with memory foam are designed for optimal ergonomic fit. Not only does the foam mould itself perfectly to the shape of your ear, it also seals in bass sounds while keeping out ambient noise. This is designed with the outer cushion - using a balanced proportion of fabric and protein leather - to reduce ear surface pressure and heat build-up, so that the M1 feels and sounds excellent.

Double-layered ear-shells



The M1's double-layered ear-shells are engineered to reduce resonance and to dampen vibration for genuinely precise and clean sound so you hear every superb sound detail. The solid, layered construction ensures durability and comfort, making the M1 an ideal music companion for a long time to come.

High power neodymium drivers



Each speaker driver is carefully hand picked, tuned and tested before being paired to ensure the most balanced natural sound. The 40mm drivers utilize high power neodymium magnets to deliver true high definition sound in a wide dynamic range, reproducing even the most minute details.

Specifications

Sound

- Frequency response: 15 - 24 000 Hz
- Impedance: 16 Ohm
- Sensitivity: 106 dB
- Speaker diameter: 40 mm
- Maximum power input: 150 mW
- Distortion: < 0.1% THD
- WBCV: 111 mV

Connectivity

- Cable Connection: Oxygen free cable (1.1m)
- Compatible with: iPhone®, BlackBerry®, HTC, LG, MOTOROLA, NOKIA*, SAMSUNG*, SONY
- * Only for latest models.

Accessories

- Storage pouch
- Audio cable: with mic and pickup button

Outer Carton

- Outer carton (L x W x H): 17.9 x 17.8 x 21.9 cm
- Outer carton (L x W x H): 7 x 7 x 8.6 inch
- Nett weight: 0.4504 kg
- Nett weight: 0.993 lb
- Gross weight: 1.273 kg
- Gross weight: 2.806 lb
- Tare weight: 0.8226 kg

- Tare weight: 1.814 lb
- GTIN: 1 87 12581 67899 6
- Number of consumer packagings: 2

Packaging dimensions

- Packaging dimensions (W x H x D): 16.8 x 20.2 x 8.3 cm
- Packaging dimensions (W x H x D): 6.6 x 8 x 3.3 inch
- Nett weight: 0.2252 kg
- Nett weight: 0.496 lb
- Gross weight: 0.5614 kg
- Gross weight: 1.238 lb
- Tare weight: 0.3362 kg
- Tare weight: 0.741 lb
- EAN: 87 12581 67899 9
- Type of shelf placement: Both
- Number of products included: 1
- Packaging type: Carton

Product dimensions

- Product dimensions (W x H x D): 16.4 x 18 x 4.2 cm
- Product dimensions (W x H x D): 6.5 x 7.1 x 1.7 inch
- Weight: 0.166 kg
- Weight: 0.366 lb



Issue date 2013-12-18

Version: 6.0.5

12 NC: 8670 001 00548
EAN: 87 12581 67899 9

© 2013 Koninklijke Philips N.V.
All Rights reserved.

Specifications are subject to change without notice.
Trademarks are the property of Koninklijke Philips N.V.
or their respective owners.

www.philips.com

