

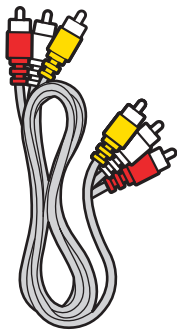
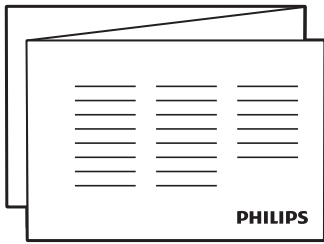
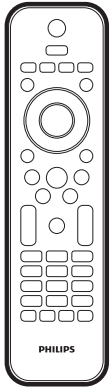
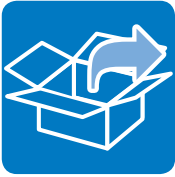
Register your product and get support at  
[www.philips.com/welcome](http://www.philips.com/welcome)

HTS5540



# Quick Start

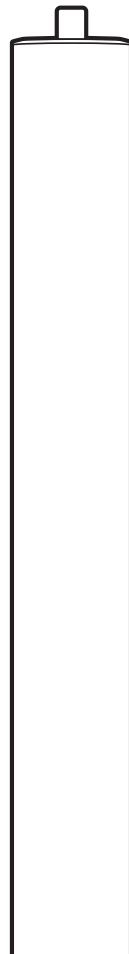
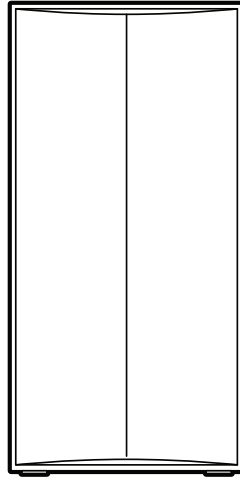
**PHILIPS**



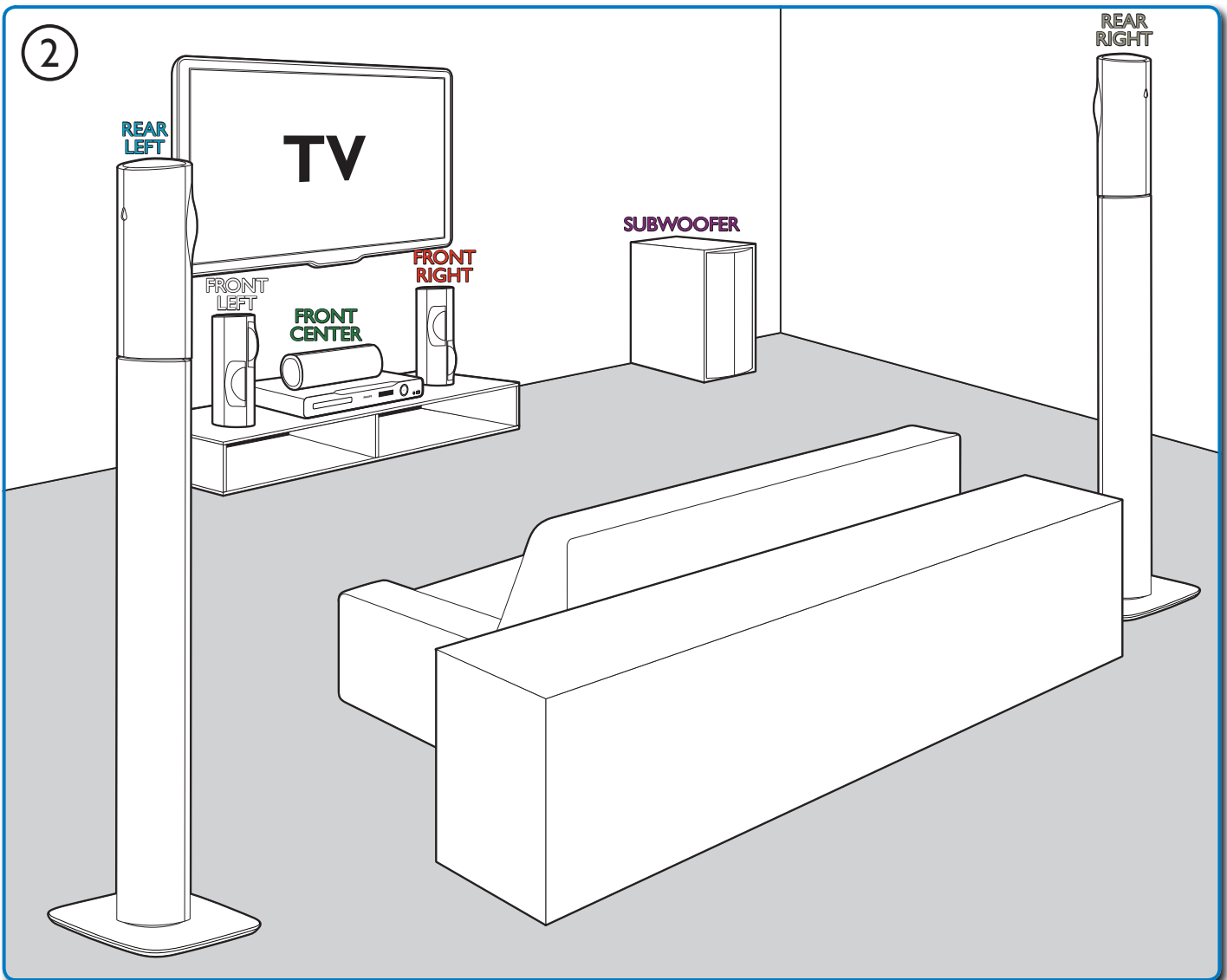
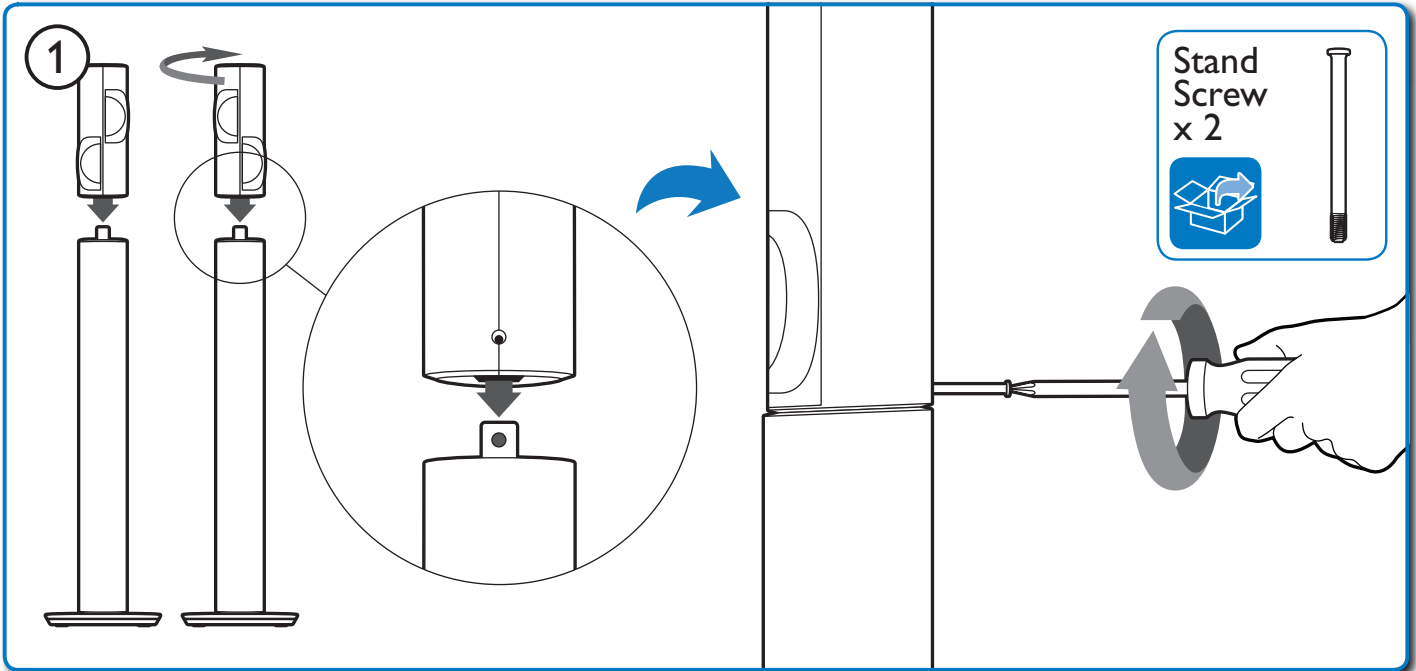
Audio/Video



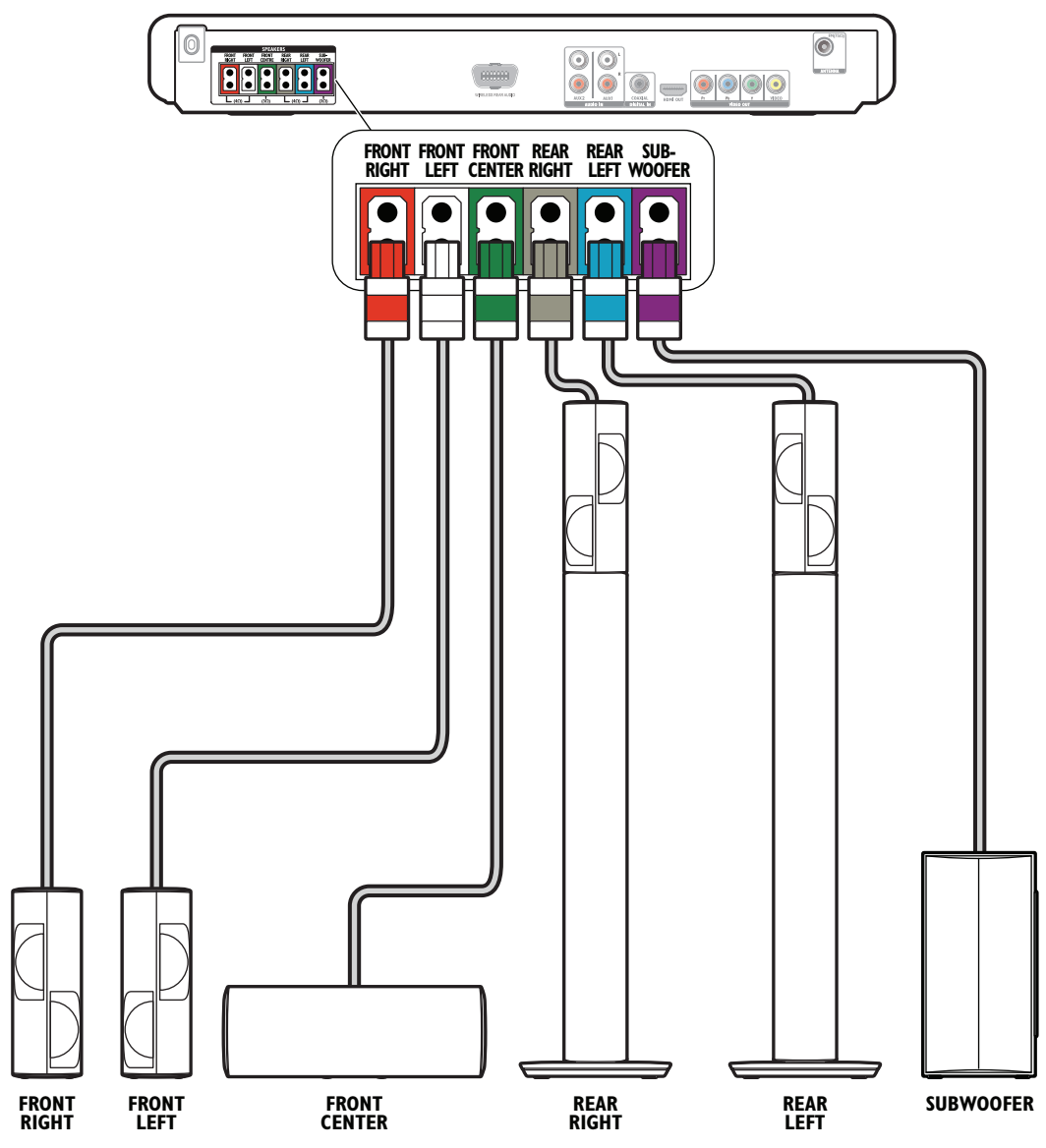
FM Antenna



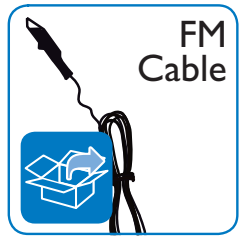
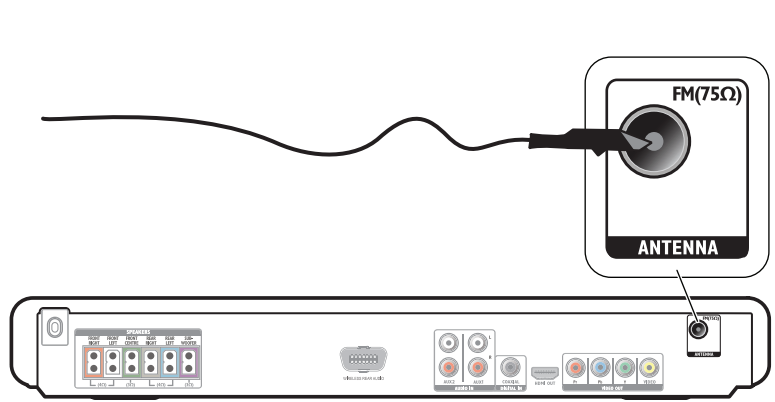
# 1

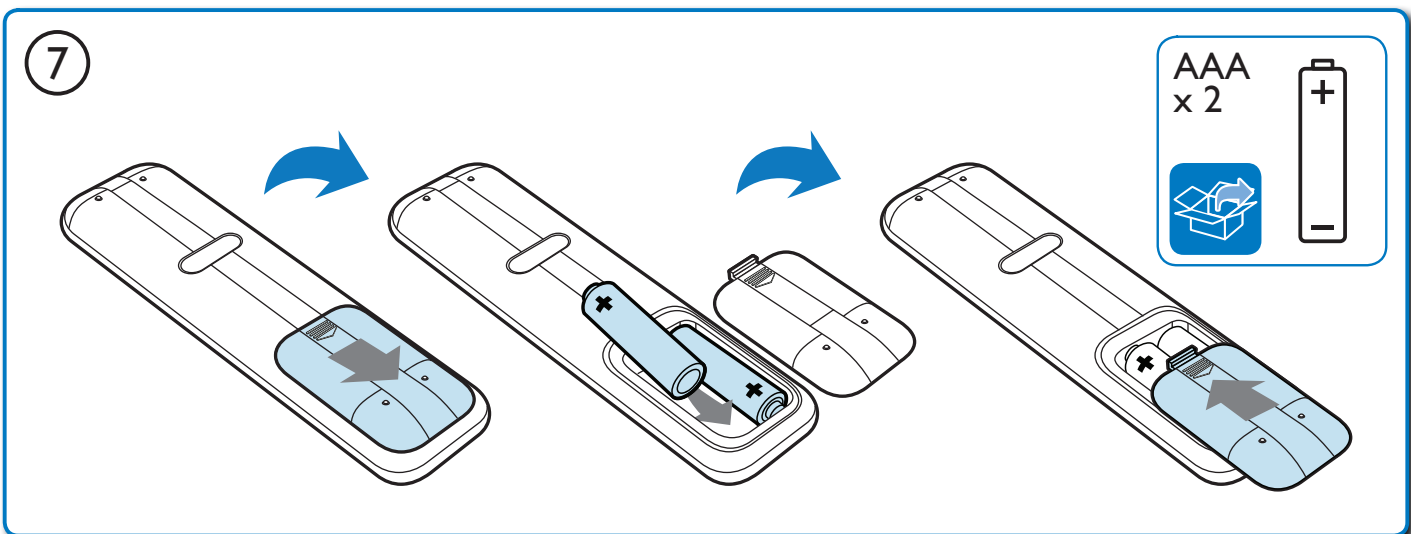
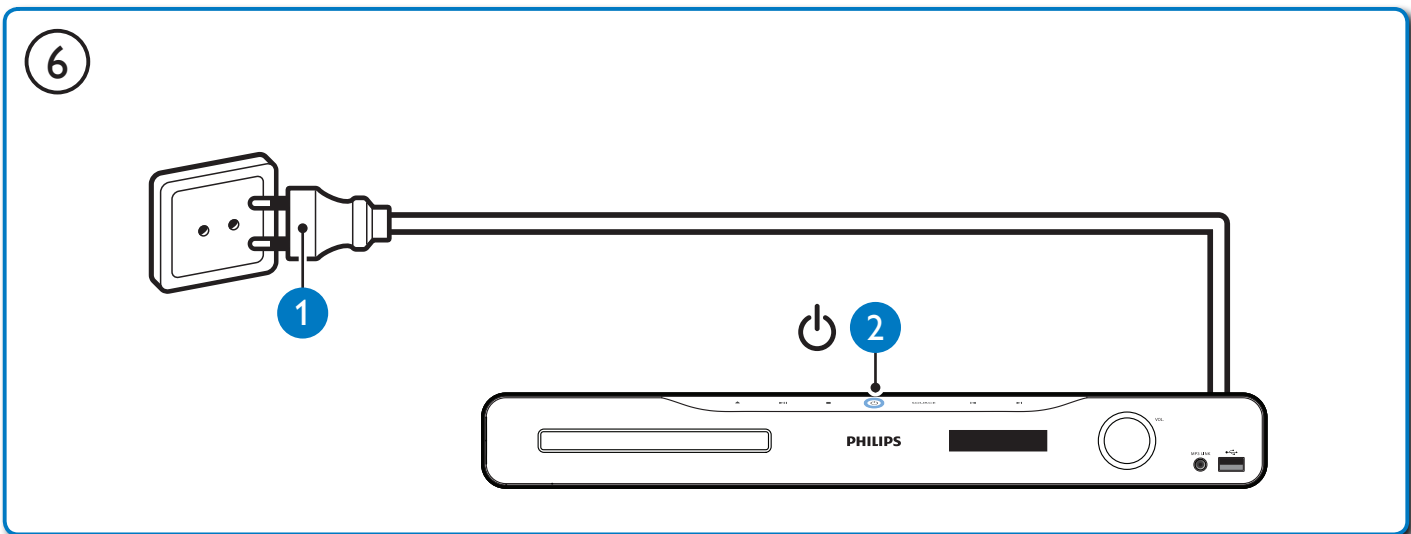
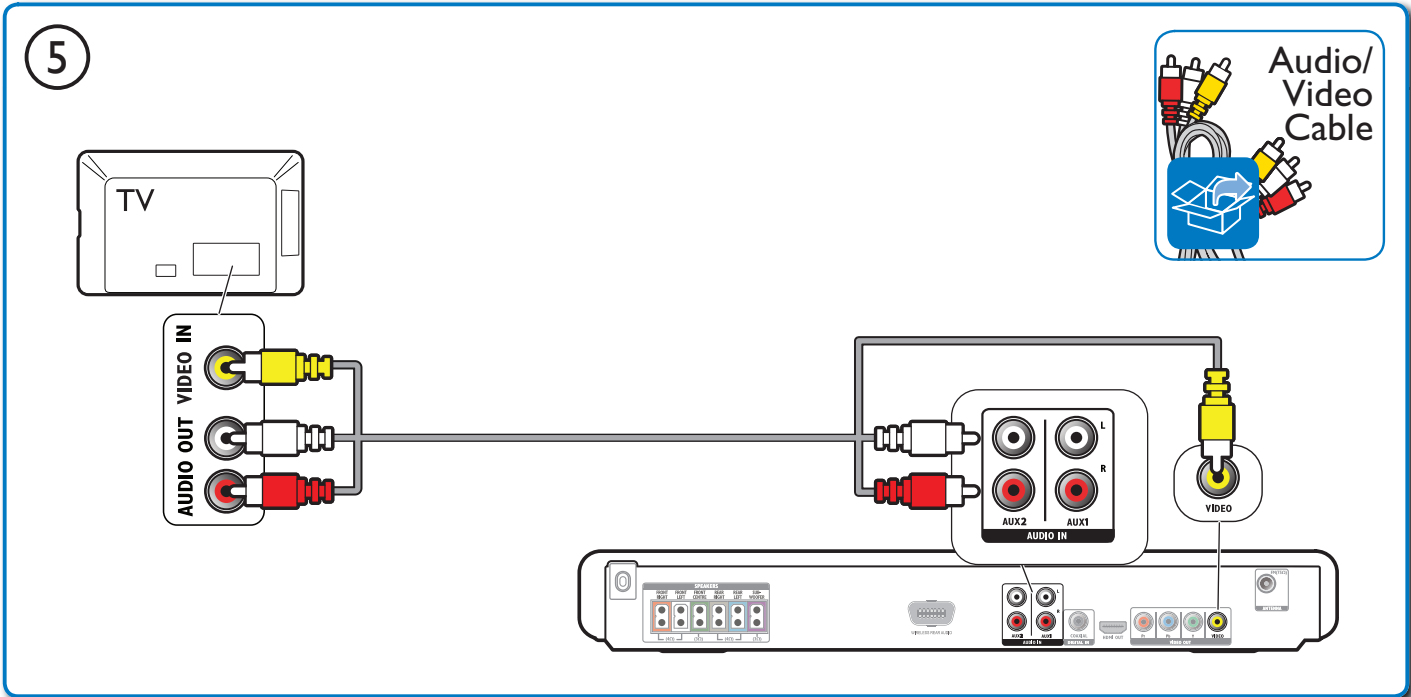


3



4





# 2

1

TV

POWER

SOURCE

TV

AV

HTS

2

3

HOME THEATER

5

6

HOME THEATER

**General Setup**

**Easylink Setup**

Disc Lock

Display Dim

OSD Language

Screen Saver

Sleep Timer

DivX(R) VOD Code

**General Setup**

Easylink Setup

Disc Lock

Display Dim

**OSD Language**

Screen Saver

Sleep Timer

DivX(R) VOD Code

Auto

**English**

中文 (繁體)

Melayu

ไทย

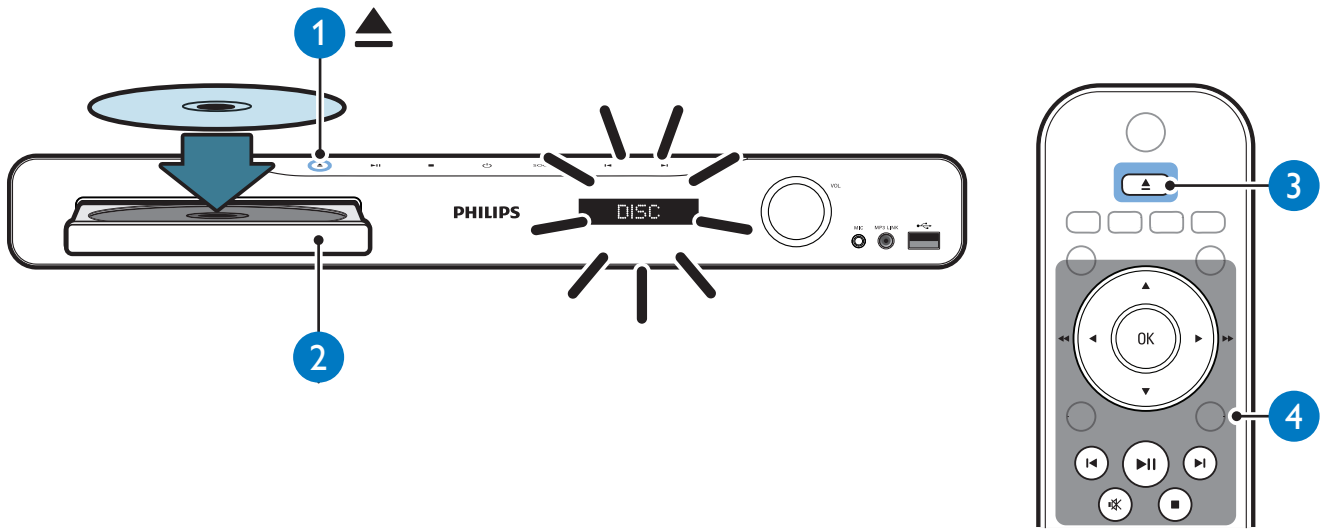
中文 (简体)

Русский

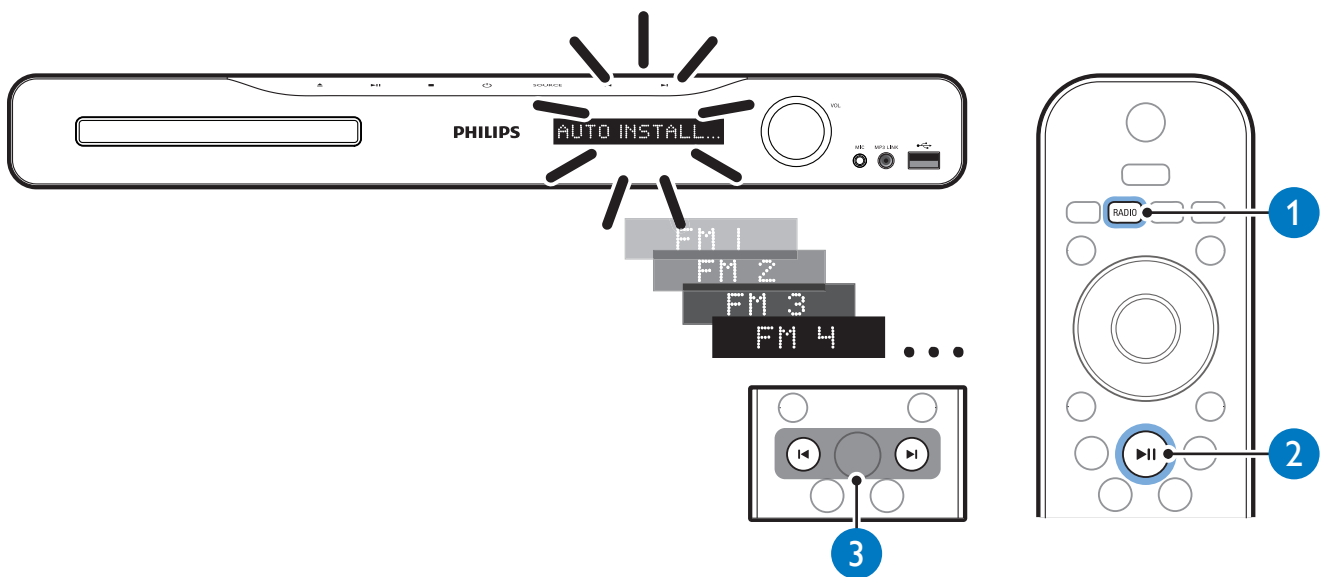
Українська

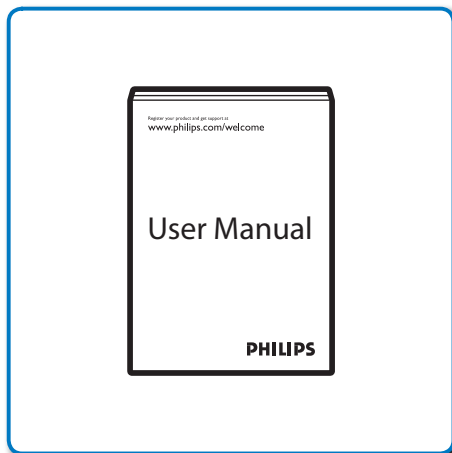
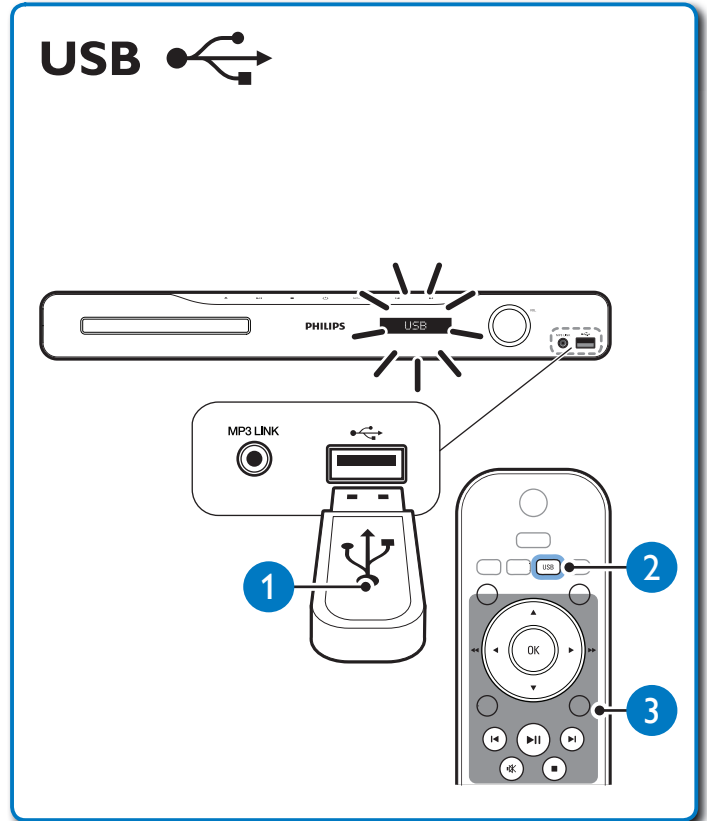
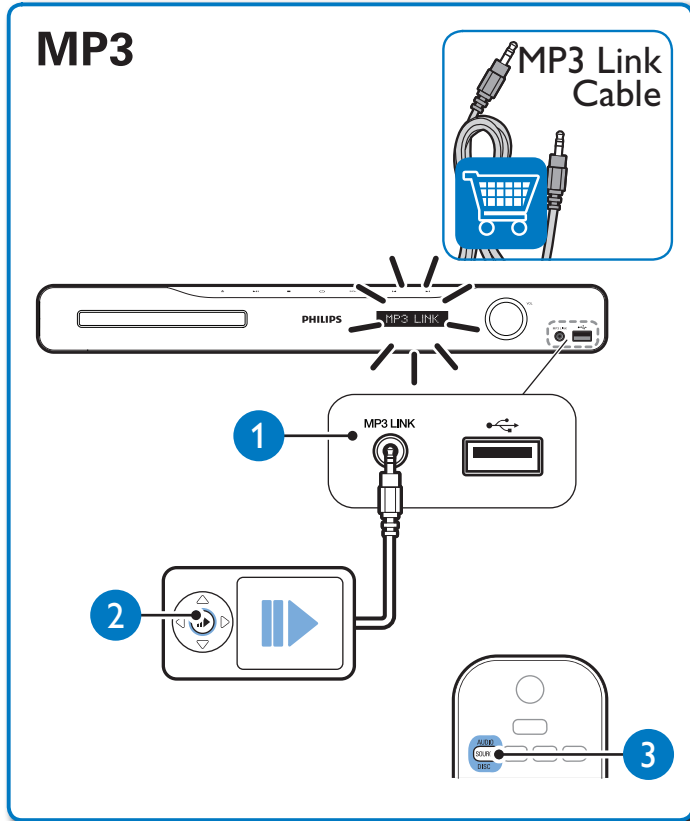
# 3

## DISC



## FM





Specifications are subject to change without notice  
Trademarks are the property of Koninklijke Philips Electronics N.V.  
or their respective owners  
2010 © Koninklijke Philips Electronics N.V. All rights reserved.  
sgttcs\_1002/51-94\_v1

Be responsible  
Respect copyrights

