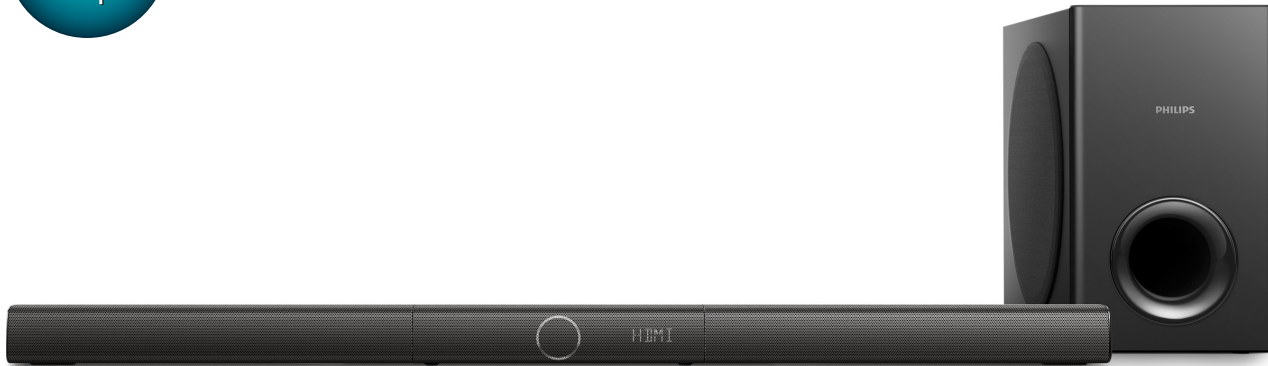


# Always there to help you

Register your product and get support at  
[www.philips.com/support](http://www.philips.com/support)



HTL3160B

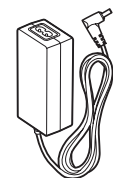
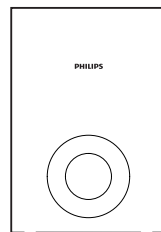


## Quick start guide

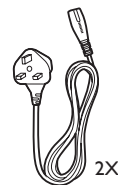
**PHILIPS**



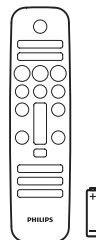
Before using your product, read all accompanying safety information



Power Adapter



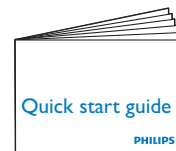
Power Cord 2X



6 X

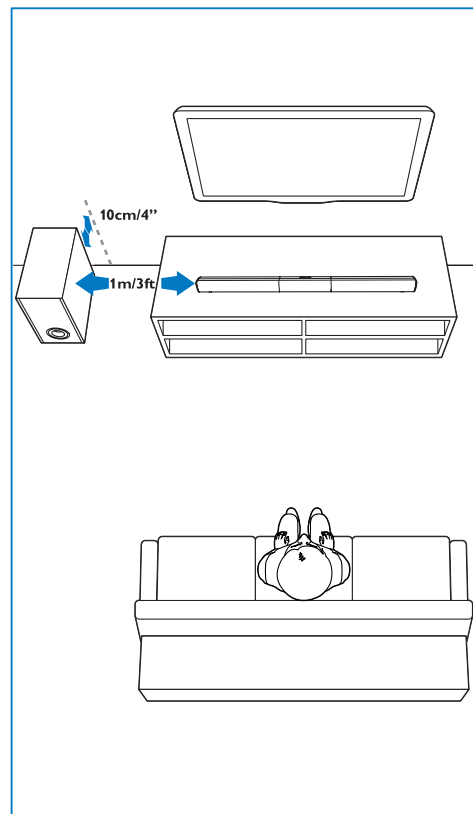
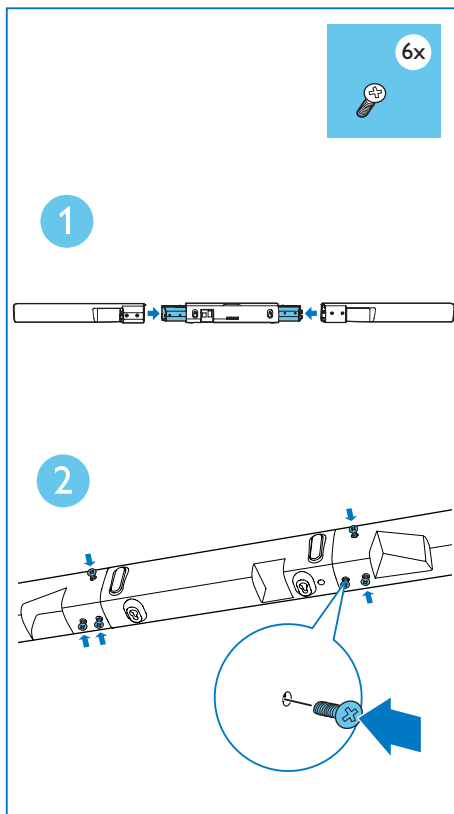


Optical Cable



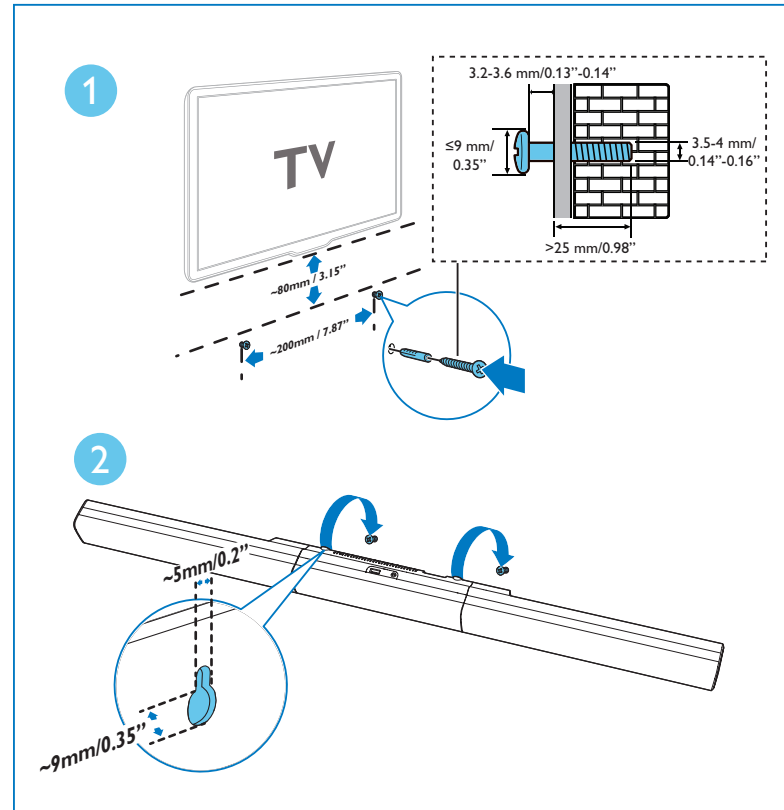
# 1

Assemble your product  
Position your product





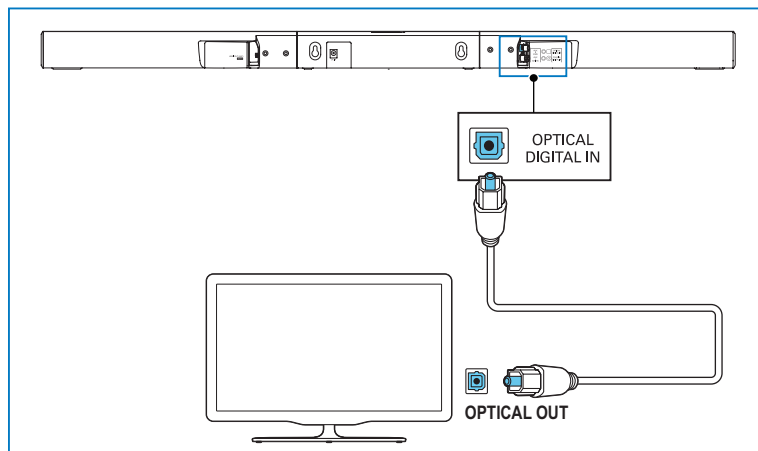
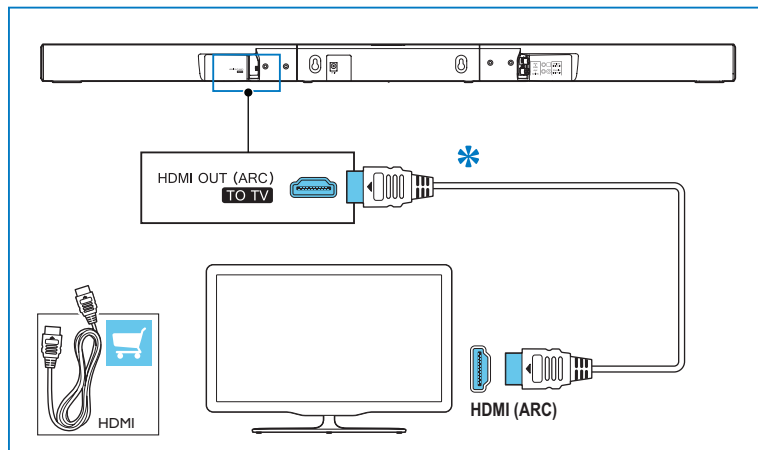
Wall mount your product (optional)

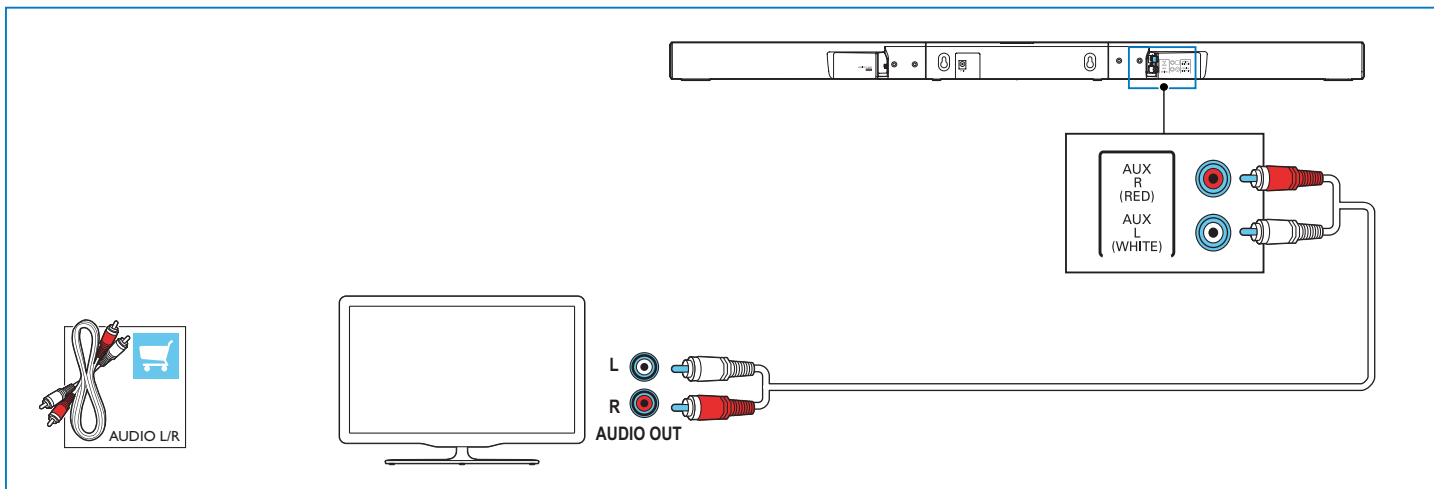
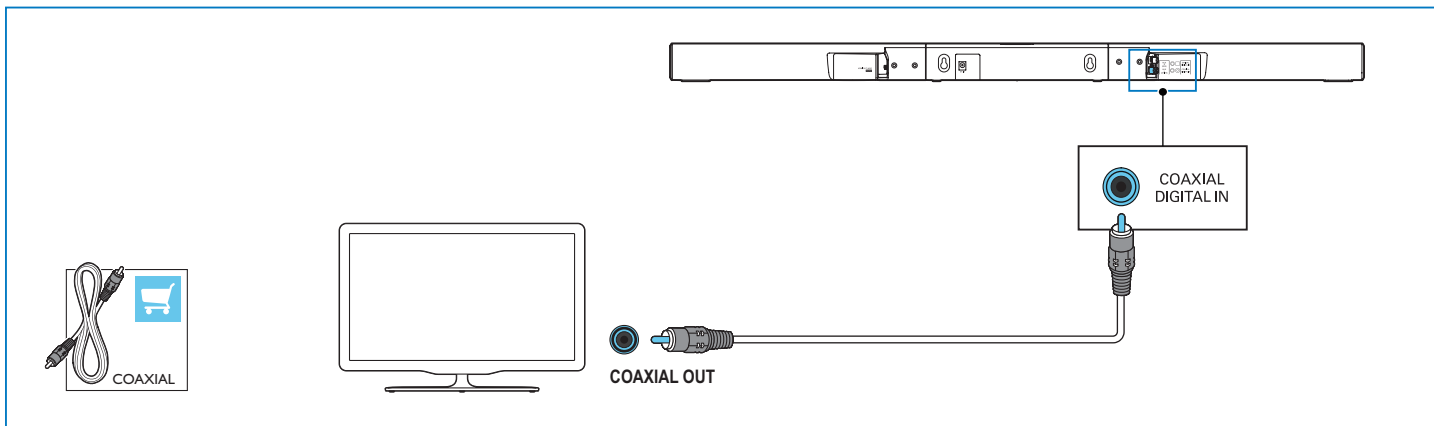


# 2

Connect to TV in one of these ways

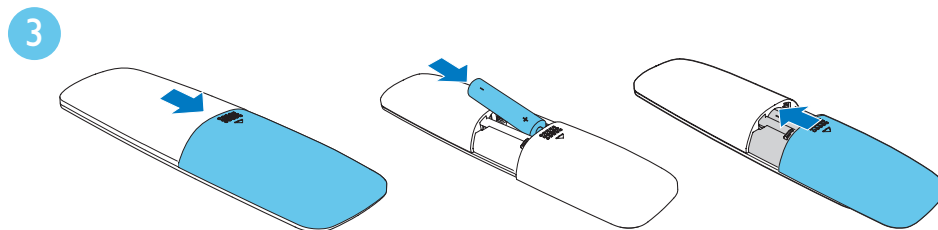
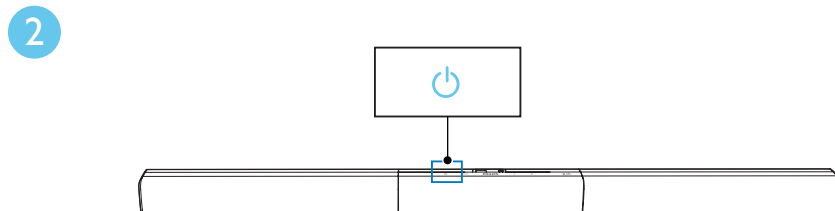
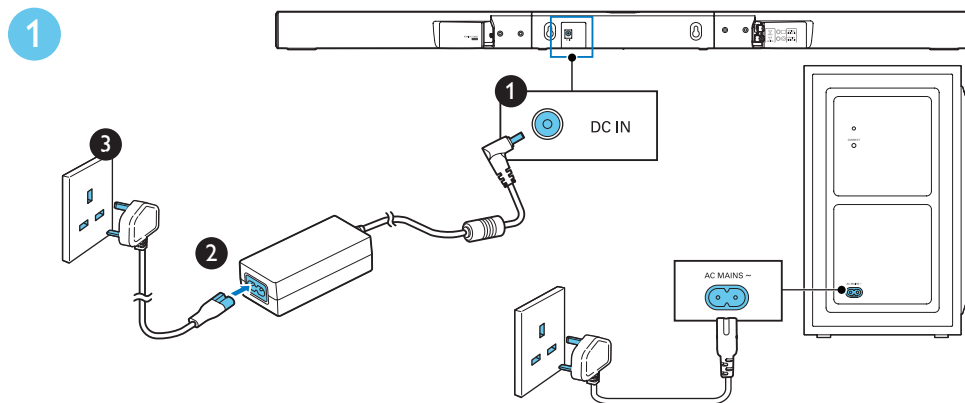
\* A High Speed HDMI Cable is required





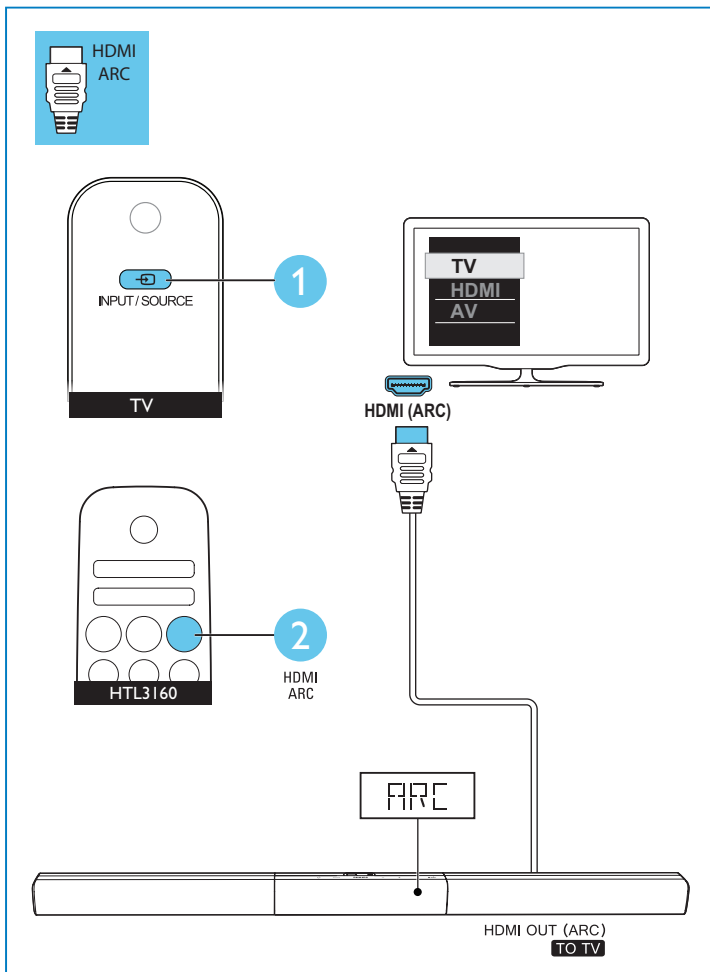
# 3

Switch on your product

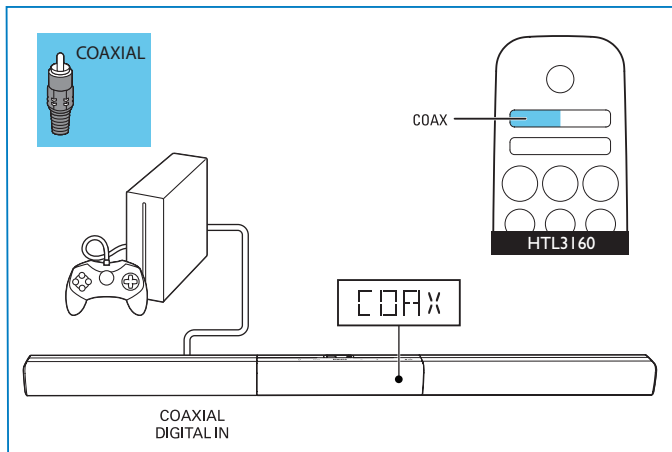
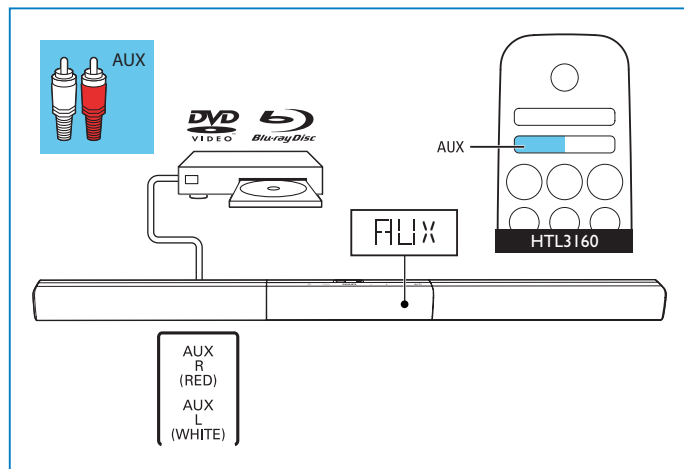
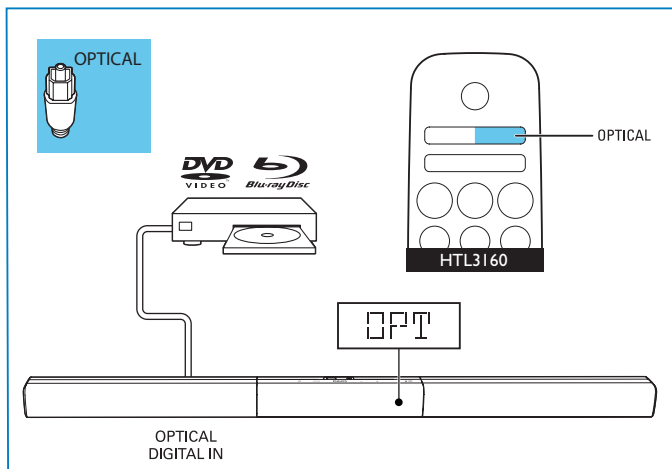


# 4

Select the correct audio source

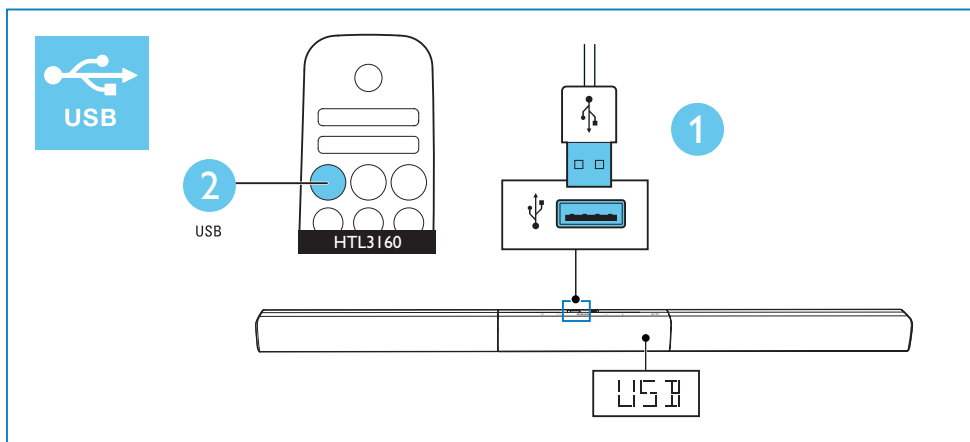
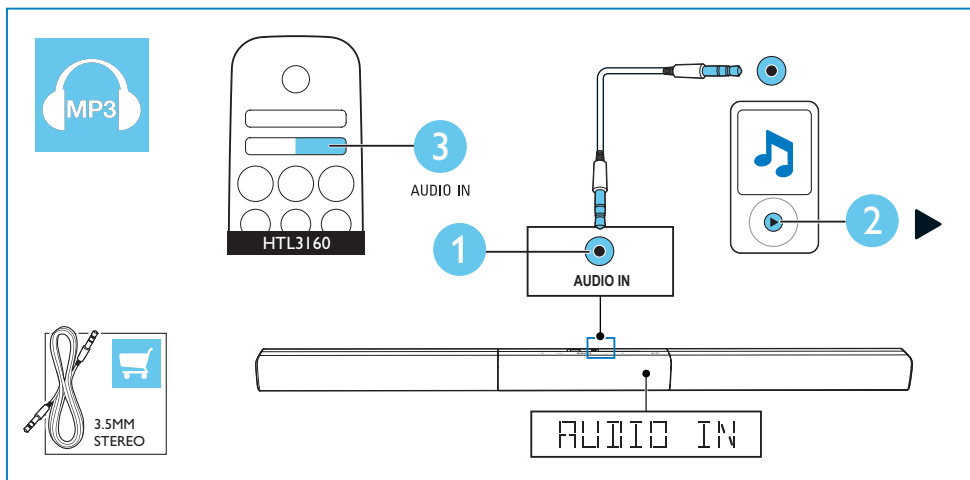






# 5

Play other devices

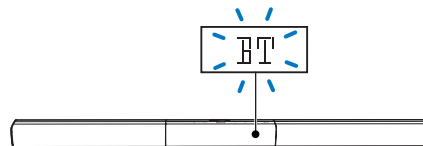
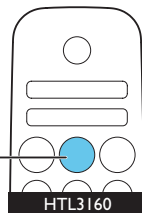


# 6

Play audio through Bluetooth or connect Bluetooth via NFC



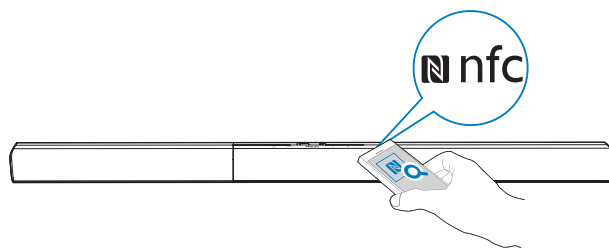
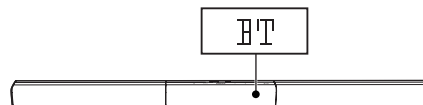
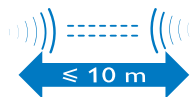
1



2



3





For more information about using this product, visit [www.philips.com/support](http://www.philips.com/support)



[www.philips.com/support](http://www.philips.com/support)



Specifications are subject to change without notice

2015 © Gibson Innovations Limited. All rights reserved.

This product has been manufactured by, and is sold under the responsibility of Gibson Innovations Ltd., and Gibson Innovations Ltd. is the warrantor in relation to this product. Philips and the Philips Shield Emblem are registered trademarks of Koninklijke Philips N.V. and are used under license from Koninklijke Philips N.V.

HTL3160B\_05\_QSG\_V1.0



Be responsible  
Respect copyrights

