

Always there to help you

Register your product and get support at
www.philips.com/welcome

PD9010

Question?
Contact
Philips



User manual

PHILIPS

Contents

1	Important	3
	Safety and notice	3
	Safety	3
	Compliance	4
	Care of the environment	4
	Copyright	5
	Warranty	6

2	Your portable DVD player	7
	Introduction	7
	What's in the box	7
	Overview of the main unit	8

3	Get started	10
	Charge power	10
	Switch on/off	12
	Select OSD language	13

4	Play music or movies	14
	Play discs	14
	Connect additional equipment	17
	Play from USB	17

5	Set the main unit	19
----------	--------------------------	-----------

6	Product information	20
---	---------------------	----

7	Troubleshooting	22
---	-----------------	----

1 Important

Safety and notice

Read and understand all instructions before you use this product. If damage is caused by failure to follow the instructions, the warranty does not apply.

Safety

Only use attachments/accessories specified by the manufacturer.

Use only power supplies listed in the user manual.

The product shall not be exposed to dripping or splashing.

Do not place any sources of danger on the product (e.g. liquid filled objects, lighted candles).

Batteries (battery pack or batteries installed) shall not be exposed to excessive heat such as sunshine, fire or the like.

Danger of explosion if battery is incorrectly replaced. Replace only with the same or equivalent type.

Where the plug of the Direct Plug-in Adapter is used as the disconnect device, the disconnect device shall remain readily operable.



Warning

- Never remove the casing of this product.
- Never lubricate any part of this product.
- Never place this product on other electrical equipment.
- Keep this product away from direct sunlight, naked flames or heat.
- Never look into the laser beam inside this product.
- Ensure that you always have easy access to the power cord, plug or adaptor to disconnect the product from the power.

Compliance

This apparatus includes this label:



Note

- The type plate is located on the bottom of the product.

Care of the environment

Environmental information

All unnecessary packaging has been omitted. We have tried to make the packaging easy to separate into three materials: cardboard (box), polystyrene foam (buffer) and polyethylene (bags, protective foam sheet.)

Your system consists of materials which can be recycled and reused if disassembled by a specialized company. Please observe the local regulations regarding the disposal of packaging materials, and old equipment.

Recycling the product and the built-in battery

Your product is designed and manufactured with high quality materials and components, which can be recycled and reused.

Never dispose of your product with other household waste. Please inform yourself about the local rules on the separate collection of electrical and electronic products and batteries.

The correct disposal of these products helps prevent potentially negative consequences on the environment and human health.

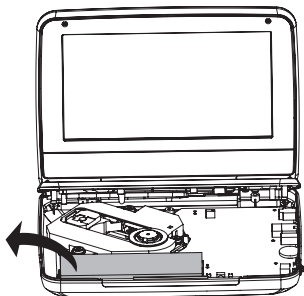
Please visit www.recycle.philips.com for additional information on a recycling center in your area.



Caution

- Removal of the built-in battery invalidates the warranty and can destroy the product.

Always bring your product to a professional to remove the built-in battery.



Copyright



Be responsible
Respect copyrights

This item incorporates copy protection technology that is protected by U.S. patents and other intellectual property rights of Rovi Corporation. Reverse engineering and disassembly are prohibited.

Specifications are subject to change without notice. Trademarks are the property of Koninklijke Philips Electronics N.V or their respective owners. Philips reserves the right to change products at any time without being obliged to adjust earlier supplies accordingly.



Manufactured under license from Dolby Laboratories.
Dolby and the double-D symbol are trademarks of Dolby Laboratories.



ABOUT DIVX VIDEO: DivX® is a digital video format created by DivX, Inc, a subsidiary of Rovi Corporation. This is an official DivX Certified® device that plays DivX video. Visit divx.com for more information and software tools to convert your files into DivX videos.

ABOUT DIVX VIDEO-ON-DEMAND: This DivX Certified® device must be registered in order to play purchased DivX Video-on-Demand (VOD) movies. To obtain your registration code, locate the DivX VOD section in your device setup menu. Go to vod.divx.com for more information on how to complete your registration.

Warranty

- Never attempt to repair the product, this could lead to the risk of injury, damage to the product and will void your warranty.
- Use the product and accessories only as intended by the manufacturer. The caution sign printed on the back of the product indicates risk of electric shock.
- Never remove the cover of the product. Always contact Philips Customer Support for service or repairs.
- Any operation expressly prohibited in this manual, or any adjustments and assembly procedures not recommended or authorized in this manual shall void the warranty.

2 Your portable DVD player

Congratulations on your purchase, and welcome to Philips! To fully benefit from the support that Philips offers, register your product at www.philips.com/welcome.

Introduction

On this portable DVD player, you can play the following discs (including CD-R, CD-RW, (S)VCD, DVD±R and DVD±RW):

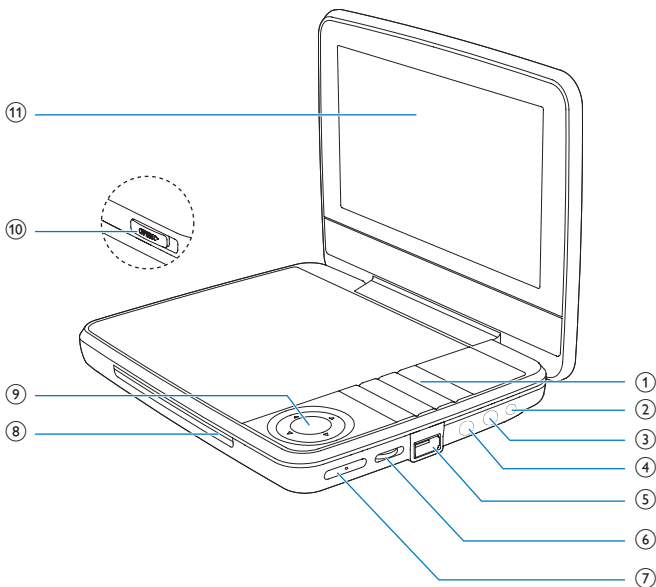
- DVD-Video
- Video CD
- Audio CD
- MP3 CD
- Divx
- Discs with JPEG files

What's in the box

Check and identify the contents of your package:

- Portable DVD player
- AC power adaptor, AY5808/75 or DSA-9PFB-09 FEU090100
- Car adaptor
- Short user manual

Overview of the main unit



- ① ①
- Turns on/off DVD player.
- SOURCE**
- Switches between DISC and USB.
- SETUP**
- Accesses or exits the setup menu.
- OPTIONS**
- Accesses options relating to the current activity or selection.
 - Accesses or exits the setup menu.
- STOP**
- Stops play.

DISC MENU

- For DVD, accesses or exits disc menu.
- For VCD, turns on or off PBC (Playback Control) mode.
- For VCD version 2.0 or SVCD with PBC turned on, returns to the menu.



- Skips to the previous or next title, chapter, or track.

② 9-12V DC IN

- Power supply socket.

③ AV OUT

- Audio/video output jack.

④

- Headphone jack.

⑤

- USB socket.

⑥ VOL +/-

- Increases or decreases volume.

⑦ RESET

- When the player hangs up, press it with a ball-point pen or similar tool to reset the player.

⑧ ▲, ▼, ◀, ▶

- Navigates menus.



- Searches backward/forward at different speeds.



- Confirms an entry or selection.
- Starts, pauses or resumes disc play.

⑨ CHR/IR/ ①

- Charging indicator/Remote control sensor/Power indicator.

⑩ OPEN ▶

- Opens the disc compartment.

⑪ Display panel

3 Get started



Caution

- Use the controls only as stated in this user manual.
- Always follow the instructions in this chapter in sequence.

Charge power

Charge through the AC adaptor



Caution

- Risk of product damage. Ensure that the power supply voltage corresponds to the voltage printed on the bottom of the player.
- Use only the supplied adaptors to charge the battery.

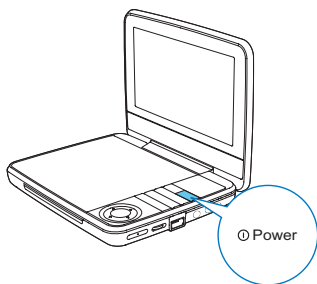


Note

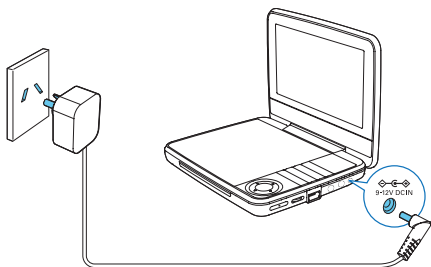
- The type plate is located on the bottom of the player.

To fast charge the battery,

1 press  to switch off the player.



- 2 Connect the supplied AC adaptor to the player and to the AC outlet.



- ➡ The **CHR** indicator turns on (red).
- ➡ When the battery is fully charged, the **CHR** indicator turns off.

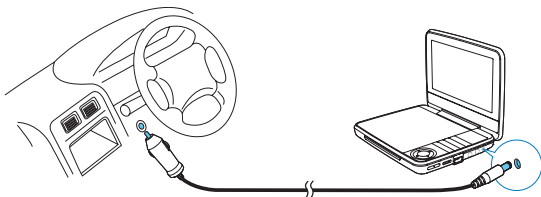


Tip

- You can also charge the battery during play.
- To maximize battery life, recharge the battery immediately once the battery is fully discharged. If you do not use the player for a long time, recharge the battery once every two months.

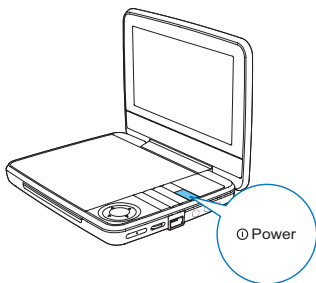
Charge through the car adaptor


Connect the supplied car adaptor to the player and car cigarette lighter.



Switch on/off

- 1 Press  to switch on the player.
↳ The power indicator turns on (green).



- 2 To switch off the player, press .
↳ The power indicator turns off.

Select OSD language

You can choose a different language for the on-screen display text.

- 1 Press **SETUP**.
↳ The setup menu is displayed.
- 2 Go to **[General] > [Language]**.
- 3 Press **▲ / ▼** to select a language option.
- 4 Press **▶II / OK** to confirm.
- 5 Press **SETUP** to exit.

4 Play music or movies

Play discs

- 1 Slide **OPEN** ► on the player.
- 2 Insert the disc with label side facing up.
- 3 Push down to close the disc compartment.
 - ↳ Play starts automatically. If not, press ►||/OK.
 - If a menu is displayed, select an item, then press ►||/OK to start play.
 - To pause, press ►||/OK. Press again to resume play.
 - To stop, press **STOP** twice.
 - To select the previous/next item, press ◀ or ▶.
 - To start search within video/audio, press ◀ or ▶ once or more.

Play options

Select a subtitle language

You can select a subtitle languages on DVDs.

- 1 Press **OPTIONS**.
 - ↳ The option menu is displayed.
- 2 Select **[Subtitles]**, then press ►||/OK.
- 3 Press ▲ / ▼ to select a subtitle.
- 4 Press ►||/OK to confirm.
- 5 Press **OPTIONS** to exit.

Select an audio language

You can select an audio language on DVDs or DivX discs.

- 1 Press **OPTIONS**.
 - ↳ The setup menu is displayed.
- 2 Select **[Audio language]**, then press ►||/OK.
- 3 Press ▲ / ▼ to select a language.
- 4 Press ►||/OK to confirm.

Select an audio mode

When you play VCDs, you can select an audio mode.

- 1 Press **OPTIONS**.
↳ The option menu is displayed.
- 2 Select **[Audio]**, then press **▶II/OK**.
- 3 Press **▲/▼** to select audio channel: **[Stereo]**, **[Left-mono]** or **[Right-mono]**.

Repeat

During play, you can select different repeat options.

- 1 Press **OPTIONS**.
↳ The option menu is displayed.
- 2 Select **[Repeat]** and press **▶II/OK**.
↳ The repeat options are displayed.

For DVD

- **[Repeat A]**: the start of the section to repeat
- **[Repeat B]**: the end of the section to repeat
- **[Repeat Chapter]**: repeat the current chapter
- **[Repeat Title]**: repeat the current title or track
- **[Repeat all]**: repeat all titles on the disc
- **[Repeat Off]**: switch off the repeat mode

For VCD

- **[Repeat A]**: the start of the section to repeat
- **[Repeat B]**: the end of the section to repeat
- **[Repeat 1]**: repeat the current track
- **[Repeat all]**: repeat all tracks on the disc
- **[Repeat Off]**: switch off the repeat mode

For MP3/CD/DivX

- **[Repeat 1]**: repeat the current track
- **[Repeat Folder]**: repeat all the tracks in current folder
- **[Off]**: switch off the repeat mode

- 3 Select an option, then press **▶II/OK** to confirm.



Tip

- You cannot repeat items when PBC is on during VCD/SVCD play.

Random play

You can play all tracks in random order on CDs or MP3 CDs.

- 1 Press **OPTIONS**.
↳ The option menu is displayed.
- 2 Select **[Shuffle All]** and press **▶II/OK**.
- 3 Select **[On]** or **[Off]**.
- 4 Press **▶II/OK** to confirm.

Zoom

You can zoom in and out for video images or pictures on DVDs, VCDs, or JPEG CDs.

- 1 Press **OPTIONS**.
↳ The option menu is displayed.
- 2 Select **[Zoom & Pan]** and press **▶II/OK**.
- 3 Press **▶II/OK** repeatedly to zoom in and out.
- 4 When the video image or picture is enlarged, press **▲, ▼, ◀, ▶** to pan through it.

Display play information

You can view the play information during play on DVDs or VCDs.

- 1 Press **OPTIONS**.
↳ The option menu is displayed.
- 2 Select **[Display]** and press **▶II/OK** to confirm.
↳ For DVDs, title number, chapter number and elapsed play time is displayed. For VCDs, track number and elapsed play time is displayed.

Rotate pictures

For JPEG CDs only, While the JPEG is displayed:

- Press **▲** to flip up/down.
- Press **▼** to flip left/right.

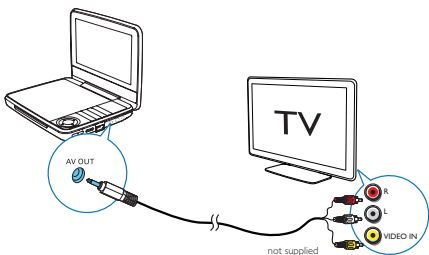
Connect additional equipment

You can connect the player to a TV or an amplifier to enjoy DVDs.



Caution

- Turn off your player before you connect it to any additional equipment.

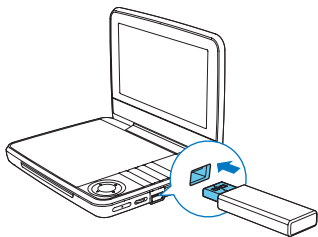


- 1 Connect the AV cable (not supplied) to the **AV OUT** jack of the player.
- 2 Match the color of the AV cables (not supplied) with the jacks on your TV:
 - the yellow cable is for the yellow video jack,
 - the red or white cable is for the red or white audio jacks.

Play from USB

You can play DivX, VOB, MP3, or JPEG files that are stored on a USB storage device.

- 1 Connect the USB device to the player:
 - ↳ The content menu is displayed.



- 2 Press **SOURCE** to switch to USB mode.
- 3 Select a file, then press ►||.
↳ Play starts.
- 4 To stop play, press **STOP**.

5 Set the main unit

To maximize your play experience, use **SETUP** to fine tune your settings.

- 1 Press **SETUP**.
↳ The setup menu is displayed.
- 2 Use navigation keys to select an option and press ► **II** / **OK** to confirm.

[General]	
[Language]	Select on-screen display language
[PBC settings]	Set playback control function on/off.
[Power save]	Set power saving mode.
[DivX (VOD)]	Get DivX registration code.
[DivX subtitles]	Select DivX subtitle language.
[Parental(DVD)]	Select parental options.
[Set password]	Change existing password (3308 by default).
[Factory settings]	Restore factory settings.
[Video]	
[LCD Display]	Set screen display aspect ratio.
[TV standard]	Set video output format to TV system.
[Brightness]	Adjust screen brightness.
[Contrast]	Adjust screen contrast.
[Audio]	
[Dolby]	Set Dolby output.
[Version]	Check the version information.

- 3 Press ◀ to go back to the previous menu.
- 4 Press **SETUP** to exit.

6 Product information



Note

- Product information is subject to change without prior notice.

Dimensions	239 x 39 x 178 mm
Weight	1.1 kg
AC power adaptor	AY5808/75 or DSA-9PFB-09 FEU090100
Power supply	Input: 100-240V~ 50/60Hz Output: DC 9V \equiv 1.0A
Power consumption	11.5 W
Operating temperature range	0-45°C
Laser wavelength	650 nm
Video output	
Format	PAL & NTSC
Output level	1Vp - p \pm 20%
Load impedance	75 Ω
Audio line out	
Audio out (analog audio)	Output level: 2V \pm 10%
Load impedance	10 K Ω
Audio distortion + noise	\leq -80 (1KHz)

Frequency response	20Hz-20KHz \pm 1dB
Signal/noise ratio	\geq 80 dB
Channel separation	\geq 80 dB
Dynamic range	\geq 80 dB

Playable media

Disc	DVD, DVD-Video, VCD/SVCD, Audio CD DVD+R/+RW, DVD-R/-RW, DVD+R/-R DL (Dual Layer) CD-R/CD-RW, MP3 media, JPEG files
------	---

File format

Video	.avi, .divx, .mp4, xvid
Audio	.mp3
Picture	.jpg, .jpeg

USB

Compatibility	Hi-Speed USB (2.0)
Class support	USB Mass Storage Class (UMS)
File system	FAT16, FAT32
Support USB HDD (Hard Disc Drive)	an external power source may be needed

7 Troubleshooting



Warning

- Risk of electric shock. Never remove the casing of the player.

To keep the warranty valid, never try to repair the system yourself.

If you encounter problems when using the player, check the following points before requesting service. If the problem remains unsolved, register your player and get support at www.philips.com/support. When you contact Philips, ensure that your apparatus is nearby and the model number and serial number are available.

No power

- Ensure that both plugs of the mains cord are properly connected.
- Ensure that there is power at the AC outlet.
- Check if the built-in battery is drained.

No sound

- Ensure that the AV cable is connected correctly.

Distorted picture

- Clean the disc. With a clean, soft, lint-free cloth, wipe the disc outwards from the center.
- Make sure that the video output format of the disc is compatible with the TV.
- Change the video output format to match your TV or program.
- The LCD is manufactured using high precision technology. You may, however, see tiny black points and/or bright points (red, blue, green) that continuously appear on the LCD. This is a normal result of the manufacturing process and does not indicate a malfunction.

Cannot play disc

- Ensure the disc label is upwards.
- Clean the disc. With a clean, soft, lint-free cloth, wipe the disc outwards from the center.
- Check if the disc is defective by trying another disc.

No response to the remote control

- Ensure that the path between the remote control and the player is clear from obstacles.
- From a close distance, point the remote control directly at the player.
- Replace the remote control batteries.

- The function does not work for this disc. Refer to the disc instructions.

Not work properly or freeze up

- Press **RESET** with a ball-point pen or similar tool to switch off the player; and press ① to restart.

The player feels warm

- When the player is in use for a long period of time, its surface will be heated. This is normal.

**Philips Electronics Australia Limited and Philips New Zealand Limited
Warranty against Defects**

In this warranty:

We or us means Philips Electronics Australia Limited ACN 008 445 743 or Philips New Zealand Limited (Company Number 1723), and our contact details are set out at the end of this warranty;

You means the purchaser or the original end-user of the Goods;

Supplier means the authorised distributor or retailer of the Goods that sold you the Goods in Australia or New Zealand; and

Goods means the product or equipment which was accompanied by this warranty and purchased in Australia or New Zealand.

If you require assistance with the operation of the product, its features or specifications please call the Philips Consumer Care Centre on 1300 363 391 in Australia or 0800 658 224 in New Zealand.

Australia: Our Goods come with guarantees that cannot be excluded under the Australian Consumer Law. You are entitled to a replacement or refund for a major failure and for compensation for any other reasonably foreseeable loss or damage. You are also entitled to have the Goods repaired or replaced if the goods fail to be of acceptable quality and the failure does not amount to a major failure. This is not a complete statement of your legal rights as a consumer.

New Zealand: Our Goods come with guarantees that cannot be excluded under the Consumer Guarantees Act 1993. This guarantee applies in addition to the conditions and guarantees implied by that legislation.

Additional Warranty:

In addition to the rights and remedies that you have under the Australian Consumer Law, Consumer Guarantees Act of New Zealand or any other applicable law, we provide the following warranty against defects:

1. If, during the first 12 months from their date of purchase from the Supplier (**Warranty Period**), the Goods prove defective by reason of improper workmanship or materials and none of your statutory rights or remedies apply, we will repair or replace the Goods without charge.
2. We do not have to repair or replace the Goods under this Additional Warranty if the Goods have been used for a commercial purpose; misused, improperly or inappropriately installed, operated or repaired; abused; damaged; or not maintained in accordance with the manufacturer's instructions.
3. Even when we do not have to repair or replace the Goods, we may decide to do so anyway. In some cases, we may decide to substitute the Goods with a similar alternative product of our choosing. All such decisions are at our absolute discretion.
4. All such repaired, replaced or substituted Goods continue to receive the benefit of this Additional Warranty for the time remaining on the original Warranty Period.
5. This Additional Warranty is limited to repair, replacement or substitution only. As far as the law permits, we will not be liable for any loss or damage caused to property or persons arising from any cause whatsoever.
6. In order to claim under this Additional Warranty you must telephone us on 1300 363 391 in Australia or 0800 658 224 in New Zealand within the Warranty Period. You will be asked for details of the Goods, a description of the defect and your personal details. Upon accepting your claim, we shall assist you with either returning the Goods to the Supplier for replacement or to the most convenient Philips Authorised Service Centre for your Goods to be repaired. In some case we may require that you return to the Goods to us (at the address below) for repair, replacement or substitution.
 - * All returned Goods must be accompanied by satisfactory proof of purchase which clearly indicates the name and address of the Supplier, the date and place of purchase and identifies product. It is best to provide a legible and unmodified receipt or sales invoice.
 - * You must bear any expense for return of the Goods or otherwise associated with making your claim under this Additional Warranty.
7. This warranty is only valid and enforceable in Australia and New Zealand.

Contact us or the place of purchase for further details.

Philips Electronics Australia Limited
Level 1, 65 Epping Rd,
North Ryde, SYDNEY NSW 2113
Consumer Care: 1300 363 391
E-mail: pceinfo.australia@philips.com
Website: www.philips.com/support

Philips New Zealand Limited
Level 2, 1 Nugent St,
Grafton, AUCKLAND, 1023
Consumer Care: 0800 658 224
Email: pceinfo.australia@philips.com
Website: www.philips.com/support

