

Always there to help you

Register your product and get support at
www.philips.com/support

Question?
Contact
Philips

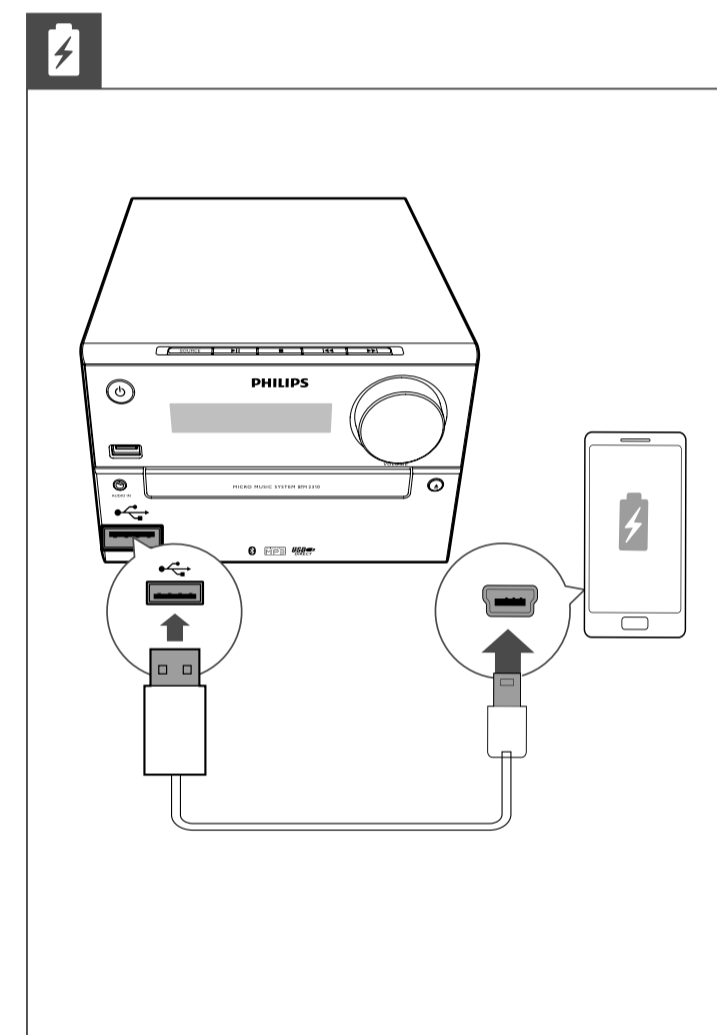
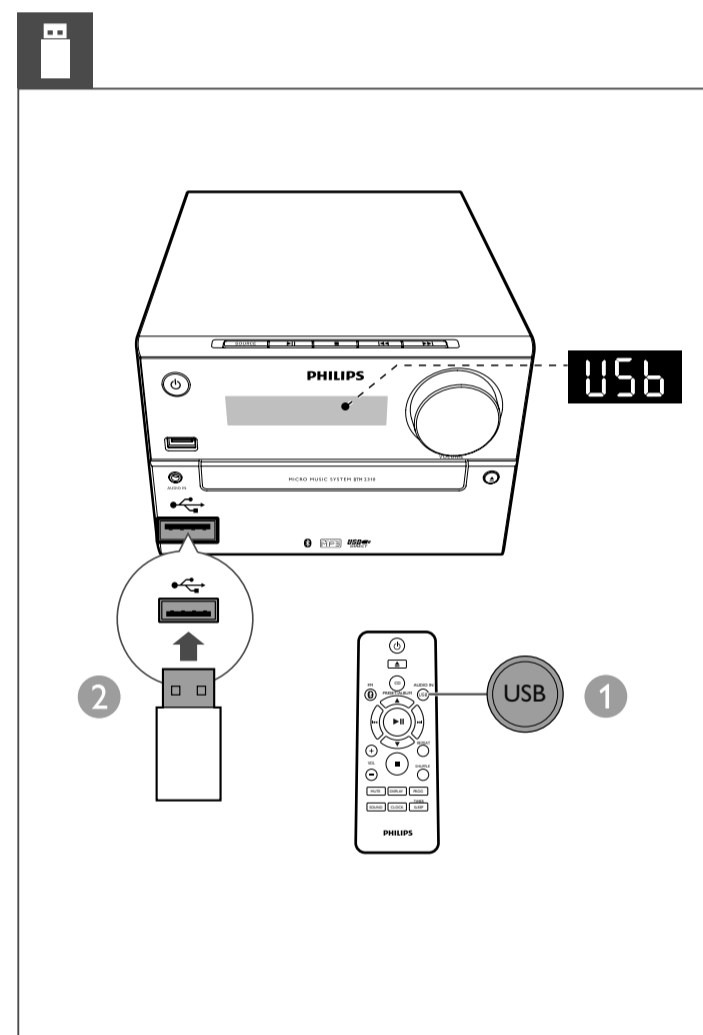
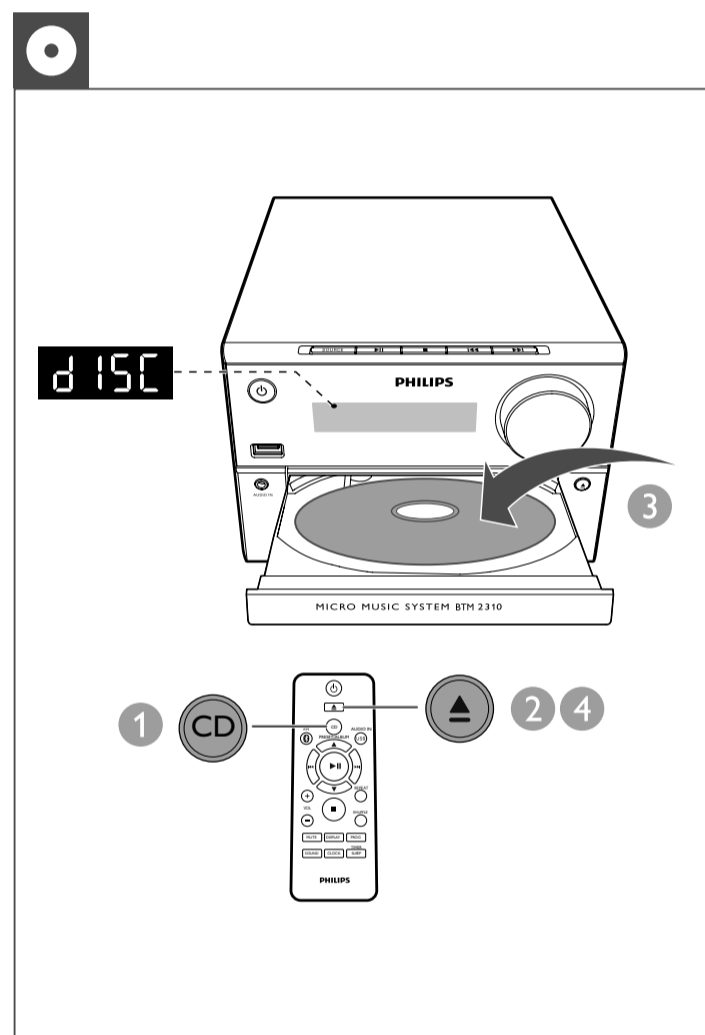
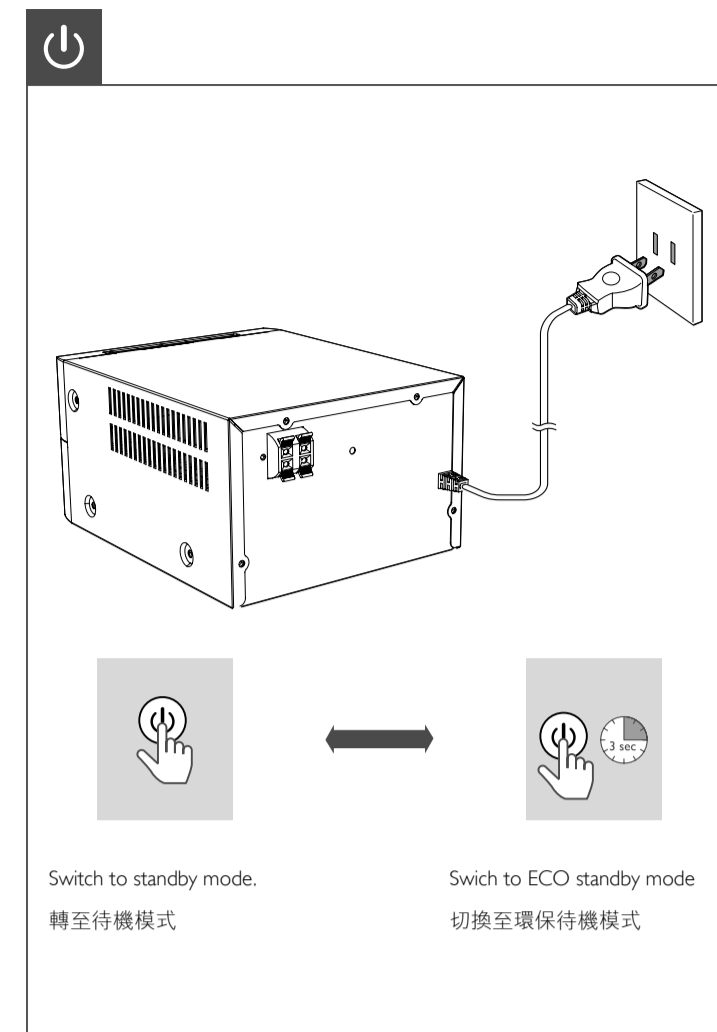
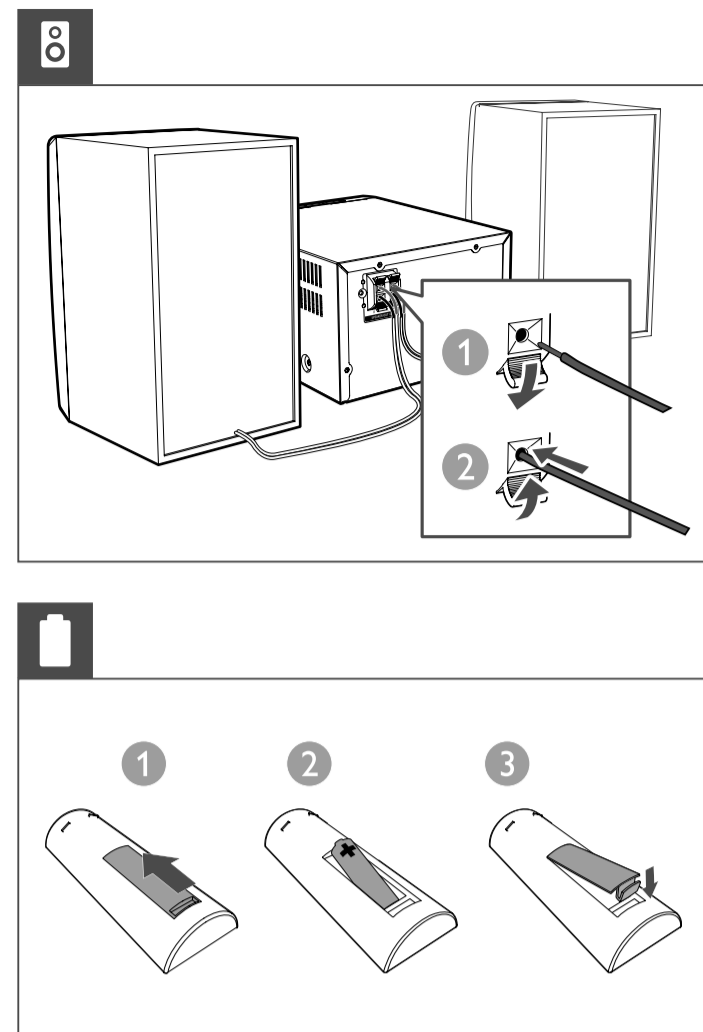
BTM2310



EN Short User Manual

繁體中文 精簡用戶手冊

PHILIPS

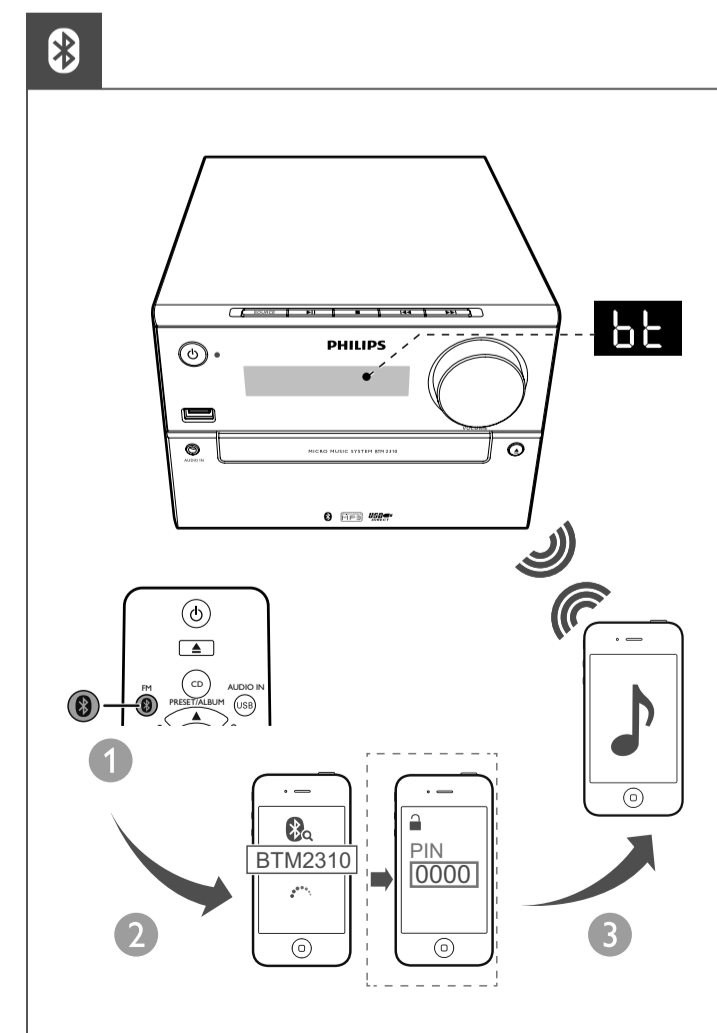
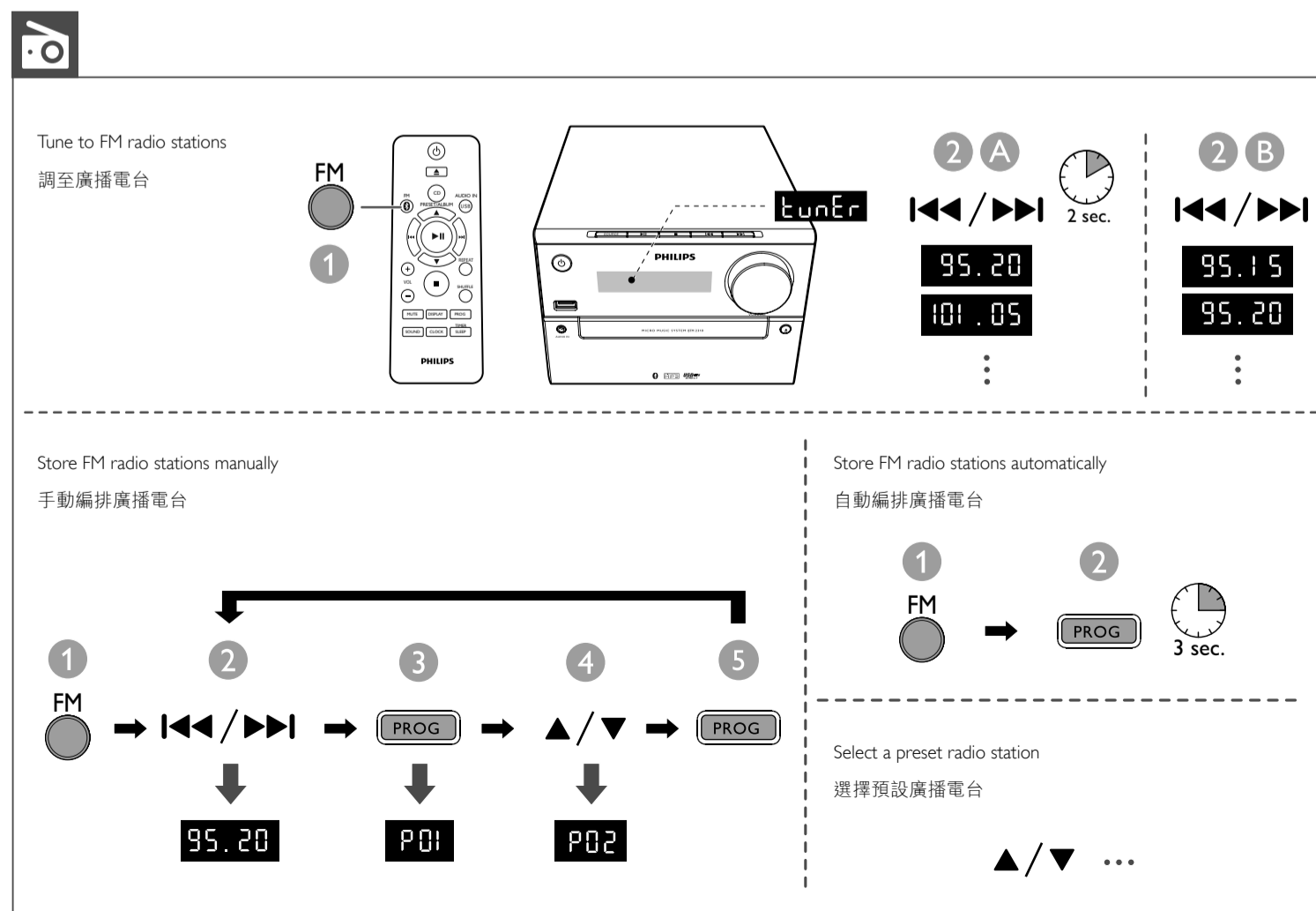


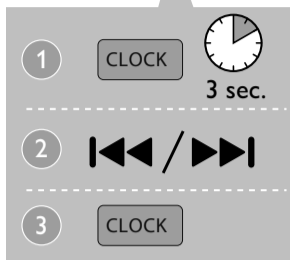
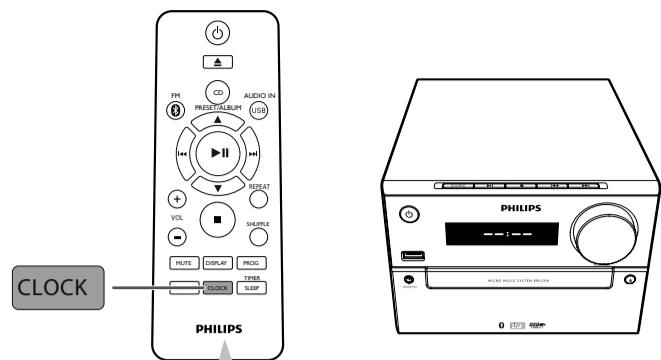
Specifications are subject to change without notice
2014 © WOOX Innovations Limited. All rights reserved.
Philips and the Philips' Shield Emblem are registered trademarks of
Koninklijke Philips N.V. and are used by WOOX Innovations Limited under
license from Koninklijke Philips N.V.

BTM2310_96_Short User Manual_V2.0



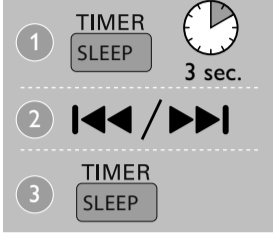
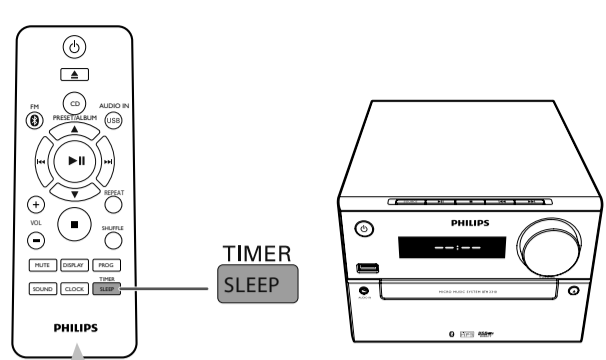
Control play	
▲ / ▼	Select a folder.
◀ / ▶	Select an audio file.
⏸	Pause or resume play.
■	Stop play.
REPEAT	Play a track or all tracks repeatedly.
SHUFFLE	Play tracks randomly.
VOL +/-	Increase or decrease the volume.
MUTE	Mute or restore sound.
SOUND	Enrich sound effect with DSC: balanced, clear, powerful, warm, and bright.
DISPLAY	Adjust display brightness.
控制播放	
▲ / ▼	選擇資料夾。
◀ / ▶	選擇一個音訊檔案。
⏸	暫停或繼續播放。
■	停止播放。
REPEAT	重複播放一首或所有曲目。
SHUFFLE	隨機播放曲目。
VOL +/-	提高或降低音量。
MUTE	靜音或恢復音量。
SOUND	採用 DSC 讓聲音更豐富：平衡、清晰、強大、柔和與響亮。
DISPLAY	調整顯示亮度。





Repeat steps 2-3 to set hour and minute.

重複步驟 2 至 3，設定小時和分鐘。



Repeat steps 2-3 to set minute, select a source (CD, FM, or USB), and adjust volume.

重複步驟 2 至 3 以設定分鐘、選擇來源 (CD、FM 或 USB)，並調整音量。



Specifications

Maximum Output Power	15 W
Speaker Impedance	6 ohm
Speaker Driver	Full range 3"
Speaker Sensitivity	>83 dB/mW
Bluetooth Version	V3.0
Bluetooth Frequency Band	2.4 GHz ~ 2.48 GHz ISM Band
Bluetooth Range	10 m (free space)
Tuner Tuning Range	87.5-108 MHz
Tuner Tuning grid	50 KHz
USB Direct Version	2.0 full speed
USB 5 V Power	≤1 A
Disc Diameter	12 cm/8 cm
Support Disc	CD-DA, CD-R, CD-RW, MP3-CD
AC power	100-240 V~, 50/60 Hz
Operation Power Consumption	18 W
Eco Standby Power Consumption	<0.5 W
Dimensions	
- Main Unit (W x H x D)	180 x 121 x 247 mm
- Speaker Box (W x H x D)	150 x 238 x 125 mm
Weight	
- Main Unit	1.6 kg
- Speaker Box	2 x 0.98 kg

規格

最大輸出功率	15 W
揚聲器阻抗	6 ohm
揚聲器驅動器	全頻 3"
揚聲器敏感度	>83 dB/mW
藍牙版本	V3.0
藍牙頻率波段	2.4 GHz ~ 2.48 GHz ISM 波段
藍牙範圍	10 公尺 (自由空間)
調諧器調諧範圍	87.5-108 MHz
調諧器調冊	50 KHz
USB Direct 版本	2.0 全速
USB 5 V 功率	≤1 A
光碟直徑	12 公分 / 8 公分
支援光碟	CD-DA、CD-R、CD-RW、MP3-CD
AC 電源	100-240 V~、50/60 Hz
操作耗電量	18 W
節能待機耗電量	<0.5 W

尺寸	
- 主裝置 (寬 x 高 x 深)	180 x 121 x 247 公釐
- 揚聲器音箱 (寬 x 高 x 深)	150 x 238 x 125 公釐
重量	
- 主裝置	1.6 公斤
- 揚聲器音箱	2 x 0.98 公斤



Compatible USB devices

- USB flash memory (USB2.0 or USB1.1)
- USB flash players (USB2.0 or USB1.1)
- Memory cards (requires an additional card reader to work with this unit)

Supported formats

- USB or memory file format: FAT12, FAT16, FAT32 (sector size: 512 bytes)
- MP3 bit rate (data rate): 32-320 Kbps and variable bit rate
- Directory nesting up to a maximum of 8 levels
- Number of albums/ folders: maximum 99
- Number of tracks/titles: maximum 999
- File name in Unicode UTF8 (maximum length: 32 bytes)

Supported MP3 disc formats

- ISO9660, Joliet
- Maximum title number: 128 (depending on file name length)
- Maximum album number: 99
- Supported sampling frequencies: 32 kHz, 44.1 kHz, 48 kHz
- Supported Bit-rates: 32~256 (kbps), variable bit rates

相容的 USB 裝置：

- USB 快閃記憶體 (USB 2.0 或 USB 1.1)
- USB 快閃播放機 (USB 2.0 或 USB 1.1)
- 記憶卡 (需要額外的讀卡機搭配產品使用)

支援的 USB 格式：

- USB 或記憶體檔案格式：FAT12、FAT16、FAT32 (區段大小：512 位元組)
- MP3 位元速率 (資料速率)：32-320 kbps 及變動位元速率
- 最多 8 層的巢狀結構
- 專輯/資料夾數目：上限 99
- 曲目/標題數目：上限 999
- Unicode UTF8 格式的檔名 (長度上限：32 位元組)

支援的 MP3 光碟格式

- ISO9660、Joliet
- 標題編號上限：128 (取決於檔名長度)
- 專輯數上限：99
- 支援的取樣頻率：32 kHz、44.1 kHz、48 kHz
- 支援的位元傳輸速率：32~256 (kbps)、多種位元傳輸速率

EN

1 Important

Safety

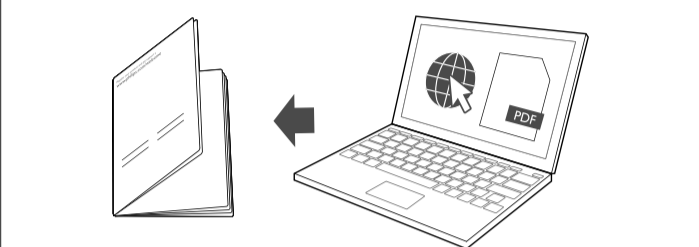
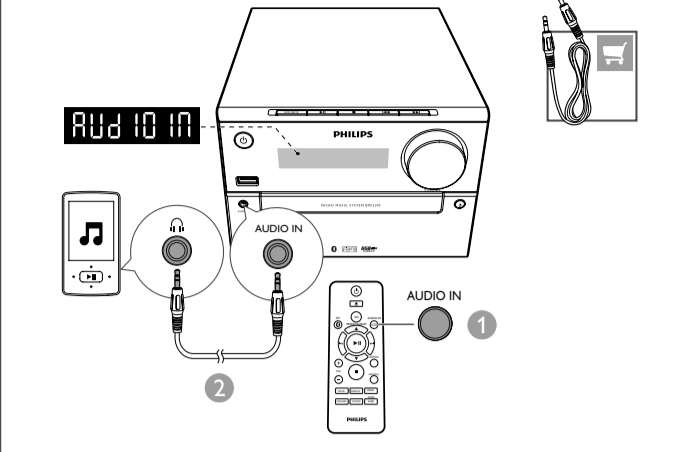


This 'bolt of lightning' indicates uninsulated material within the device may cause an electrical shock. For the safety of everyone in your household, please do not remove the covering. The 'exclamation mark' calls attention to features for which you should read the enclosed literature closely to prevent operating and maintenance problems. WARNING: To reduce the risk of fire or electric shock, the device should not be exposed to rain or moisture and objects filled with liquids, such as vases, should not be placed on the device.

CAUTION: To prevent electric shock, fully insert the plug. (For regions with polarized plugs: To prevent electric shock, match wide blade to wide slot.)

Important Safety Instructions

- Follow all instructions.
- Heed all warnings.
- Do not use this device near water.
- Clean only with dry cloth.
- Do not block any ventilation openings. Install in accordance with the manufacturer's instructions.
- Do not install near any heat sources such as radiators, heat registers, stoves, or other devices (including amplifiers) that produce heat.
- Protect the power cord from being walked on or pinched, particularly at plugs, convenience receptacles, and the point where they exit from the device.



- Only use attachments/accessories specified by the manufacturer.
- Use only with the cart, stand, tripod, bracket, or table specified by the manufacturer or sold with the device. When a cart is used, use caution when moving the cart/device combination to avoid injury from tip-over.



- Unplug this device during lightning storms or when unused for long periods of time.
- Refer all servicing to qualified service personnel. Servicing is required when the device has been damaged in any way, such as power-supply cord or plug is damaged, liquid has been spilled or objects have fallen into the device, the device has been exposed to rain or moisture, does not operate normally, or has been dropped.
- Battery usage CAUTION – To prevent battery leakage which may result in bodily injury, property damage, or damage to the unit:
 - Install all batteries correctly + and - as marked on the unit.
 - Do not mix batteries (old and new or carbon and alkaline, etc.).
 - Batteries (packed or installed) shall not be exposed to excessive heat such as sunshine, fire or the like.
 - Remove batteries when the unit is not used for a long time.
- The device shall not be exposed to dripping or splashing.
- Do not place any sources of danger on the device (e.g. liquid filled objects, lighted candles).
- Where the MAINS plug or an appliance coupler is used as the disconnect device, the disconnect device shall remain readily operable.

Warning

- Never remove the casing of this device.
- Never lubricate any part of this device.
- Never place this device on other electrical equipment.
- Keep this device away from direct sunlight, naked flames or heat.
- Never look into the laser beam inside this unit.
- Ensure that you always have easy access to the power cord, plug, or adaptor to disconnect this device from the power.

2 Notice

Any changes or modifications made to this device that are not expressly approved by WOOX Innovations may void the user's authority to operate the equipment. Your product is designed and manufactured with high quality materials and components, which can be recycled and reused.

Never dispose of your product with other household waste. Please inform yourself about the local rules on the separate collection of electrical and electronic products and batteries. The correct disposal of these products helps prevent potentially negative consequences on the environment and human health.

Your product contains batteries, which cannot be disposed of with normal household waste. Please inform yourself about the local rules on separate collection of batteries. The correct disposal of batteries helps prevent potentially negative consequences on the environment and human health.

Please visit www.recycle.philips.com for additional information on a recycling center in your area.

Environmental information

All unnecessary packaging has been omitted. We have tried to make the packaging easy to separate into three materials: cardboard (box), polystyrene foam (buffer) and polyethylene (bags, protective foam sheet.)

Your system consists of materials which can be recycled and reused if disassembled by a specialized company. Please observe the local regulations regarding the disposal of packaging materials, exhausted batteries and old equipment.

Be responsible Respect copyrights

This item incorporates copy protection technology that is protected by U.S. patents and other intellectual property rights of Rovi Corporation. Reverse engineering and disassembly are prohibited.

Bluetooth

The Bluetooth® word mark and logos are registered trademarks owned by Bluetooth SIG, Inc. and any use of such marks by WOOX Innovations is under license.

This apparatus includes this label:



Note

- The type plate is located on the back of the device.

ZH-TW

1 重要事項

安全性

了解這些安全符號



此「閃電」表示裝置內部的非絕緣材質可能導致電擊。為保障家中所有人員的安全，請勿拆卸外殼。

對於以「驚嘆號」提醒您注意的功能，應仔細閱讀隨附的說明文字，避免發生操作及維修問題。

警告：為降低火災與觸電的危險，您應避免讓本裝置暴露在雨水或濕氣中，並且請勿在本裝置上放置花瓶等裝有液體之物品。注意：若要防止觸電，請完全地插入插頭。(使用具極性指示之插頭的地區：若要防止觸電，請將較寬的接腳插入較寬的插孔。)

重要安全性指示

- 遵循所有指示。
- 注意所有警告文字。
- 請勿在近水處使用本裝置。
- 清潔時僅能使用乾布。
- 請勿阻塞任何通風口。請依照製造商的指示進行安裝。
- 請勿將本裝置安裝在接近熱源處，例如暖器裝置、暖氣孔、火爐或其他會產生高溫的裝置 (包括擴大機在內)。
- 妥善保護電源線，避免踩踏或夾壓，尤其是插頭、便利插座，以及電源線與裝置的連接處。
- 僅使用原廠指定的附件/配件。
- 僅使用經原廠指定或隨裝置銷售的推車、底座、三腳架、支架或桌子。使用推車移動裝置時應謹慎小心，避免因翻覆而造成傷害。



- 如遇雷雨或長時間不使用時，請將裝置的插頭拔除。
- 所有維修服務應委託合格的服務人員處理。當本裝置因故損壞時 (例如電源線或插頭損壞、液體潑濺、物品掉入裝置內部、裝置淋到雨或受潮、無法正常運作或摔落等)，都必須進行維修。
- 電池使用注意事項—為防止電池滲漏導致人身傷害、財物受損或產品損壞：
 - 請依照產品上標示的 + 與 - 極正確安裝所有電池。
 - 請勿混用電池 (新舊混用或鹼性電池混用等)。
 - 請勿讓電池 (套組或安裝在內) 暴露在高溫溫度下，例如日照或火焰等。
 - 若產品長時間不使用時，請將電池取出。
- 請勿將裝置置於滴水或澆水的環境。
- 請勿在裝置上放置危險物品 (如盛裝液體的容器、點燃的蠟燭等)。
- 當電源插頭或產品連接器作為中斷連接裝置時，中斷連接裝置應保持隨時可操作。

警告

- 請勿打開裝置外殼。
- 請勿在此裝置的任何部位使用潤滑油。
- 請勿將此裝置放置在其他電器上。
- 請勿讓此裝置直接曝曬於陽光下，或靠近未隔離的火爐或熱源。
- 請勿直視此裝置內的雷射光。
- 請確保電源線、插頭及變壓器位於容易取得的地方，以方便中斷裝置電源。

2 注意

未經 WOOX Innovations 明示核可即變更或修改本裝置，可能導致使用者操作本設備的授權失效。

您的產品是使用高品質材質和元件所設計製造，可回收和重複使用。請勿將您的產品與其他家用廢棄物共同丟棄。請瞭解當地電器、電子產品及電池的垃圾分類相關法規。正確處理這些產品有助於避免對環境和人類健康帶來負面影響。

您的產品內含不能作為一般家庭廢棄物處理的電池。請了解當地有關電池的垃圾分類相關法規。正確處理廢棄電池有助於避免對環境和人類健康帶來負面影響。

請造訪 www.recycle.philips.com，以取得您當地回收中心的詳細資訊。

環境保護資訊

所有非必要之包裝材料均已捨棄。我們嘗試讓包裝可以輕易拆解成三種材質：厚紙板 (外盒)、聚苯乙烯泡棉 (防震) 以及聚乙烯 (包裝袋、保護性泡棉膠紙)。產品本身含有可回收並重複使用的材質，但是需由專業公司拆解。請根據各地法規丟棄包裝材料、廢電池和舊機器。

Be responsible Respect copyrights

本產品採用具有版權保護的技術，受到某些美國專利及 Rovi Corporation 的其他智慧財產權保護。禁止進行反向工程或拆解。

Bluetooth

Bluetooth 文字標記及標誌為 Bluetooth SIG, Inc. 之註冊商標。WOOX Innovations 對這些標記的使用均已獲得授權。

本產品包含此標記：



備註

- 機型牌位於產品背面。

低功率電波輻射性電機管理辦法

第十二條 經型式認證合格之低功率射頻電機，非經許可，公司、商號或使用者均不得擅自變更頻率、加大功率或變更原設計之特性及功能。

第十四條 低功率射頻電機之使用不得影響飛航安全及干擾合法通信；經發現有干擾現象時，應立即停用，並改善至無干擾時方得繼續使用。