

For product support, visit
Para obtener asistencia técnica, visite
Pour en savoir plus sur l'assistance sur les produits, visitez le site

HTL5110

www.hd.philips.com



Quick start guide

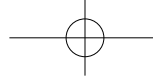
EN For Product recycling information, please visit - www.recycle.philips.com

ES Para obtener información del reciclaje de productos, por favor visite - www.recycle.philips.com

FR-CA Pour tout renseignement sur le recyclage des produits, veuillez visiter - www.recycle.philips.com

P&F USA, Inc.

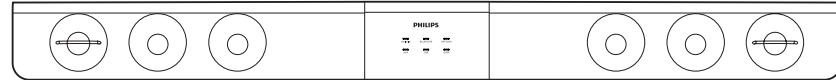
PHILIPS



EN Before using your product, read all accompanying safety information

ES Antes de usar el producto, consulte la información de seguridad que se encuentra adjunta

FR-CA Avant d'utiliser votre produit, prenez le temps de lire toute l'information de sécurité connexe



EN For further assistance, call the customer support service in your country.

To obtain assistance in the U.S.A., Canada, Puerto Rico, or the U.S. Virgin Islands, contact Philips Customer Care Center at 1-866-310-0744

To obtain assistance in Mexico, contact Philips Customer Care Center at 01 800 839 1989

ES Para obtener mas informacion, llame al servicio de soporte al cliente de su pais.

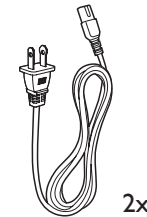
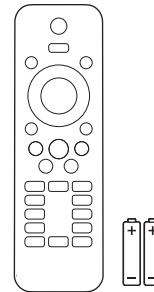
Para obtener asistencia en los Estados Unidos, en Canada, Puerto Rico o en las Islas Virgenes de los Estados Unidos, comuniquese con Centro de atencion al cliente de Philips al 1-866-310-0744

Solo para Mexico CENTRO DE ATENCION A CLIENTES LADA, 01 800 839 1989 Solo Para Mexico.

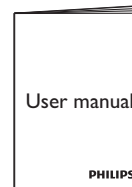
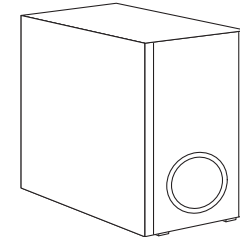
FR-CA Pour obtenir de l'aide supplementaire, communiquez avec le centre de service a la clientele de votre pays.

Pour obtenir de l'aide aux Etats-Unis, au Canada, a Puerto Rico ou aux Iles Vierges americaines, communiquez avec le centre de service a la clientele Philips au : 1-866-310-0744

Pour obtenir l'aide au Mexique, entrez en contact avec le centre de soin de client de Philips a 01 800 839 1989

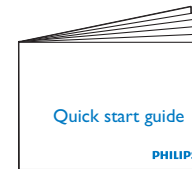


Power Cord



User manual

PHILIPS



Quick start guide

PHILIPS

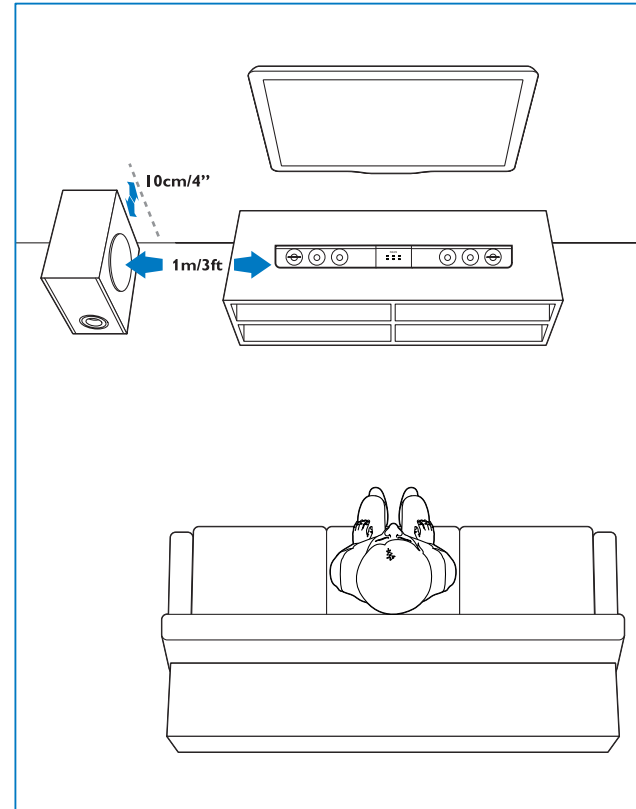


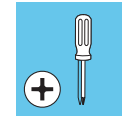
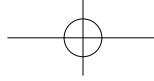
Cable Tie



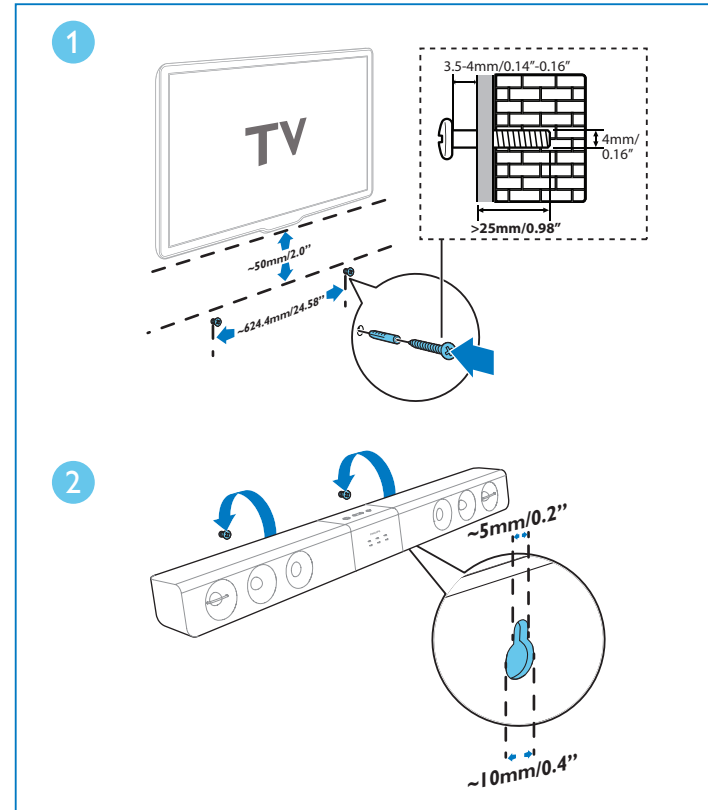
1

- EN** Position the SoundBar
ES Posicione el sistema SoundBar
FR-CA Positionnez le SoundBar





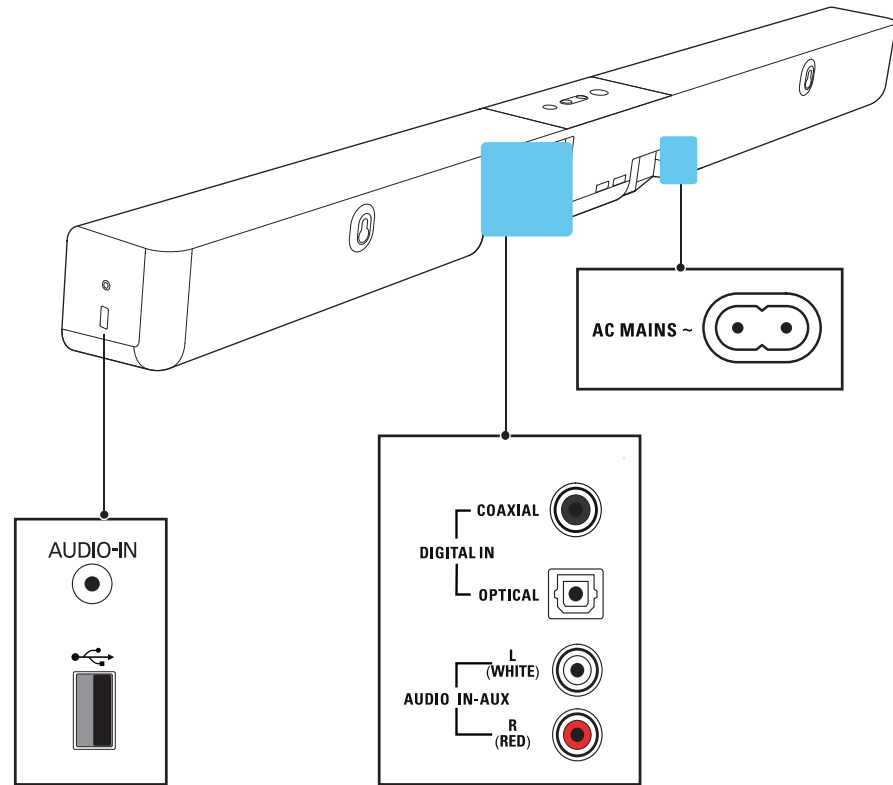
- EN** Wall mount the SoundBar (optional)
ES Montaje en pared del SoundBar (opcional)
FR-CA Fixez le SoundBar au mur (facultatif)

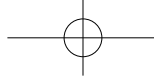




2

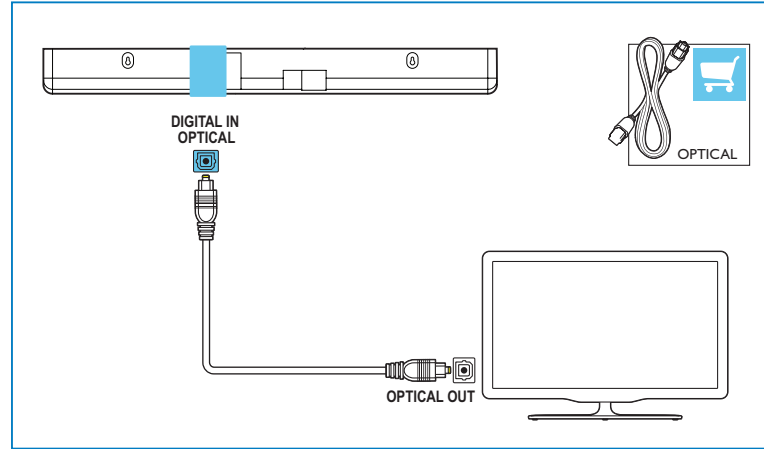
- EN** Connect the SoundBar
- ES** Conecte el sistema SoundBar
- FR-CA** Branchez le SoundBar

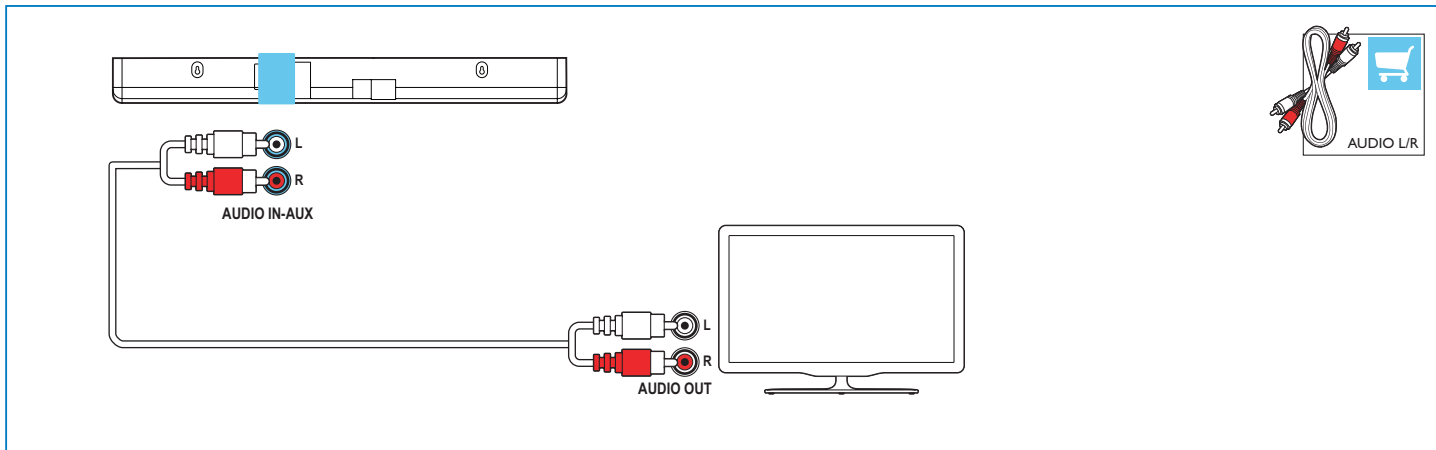
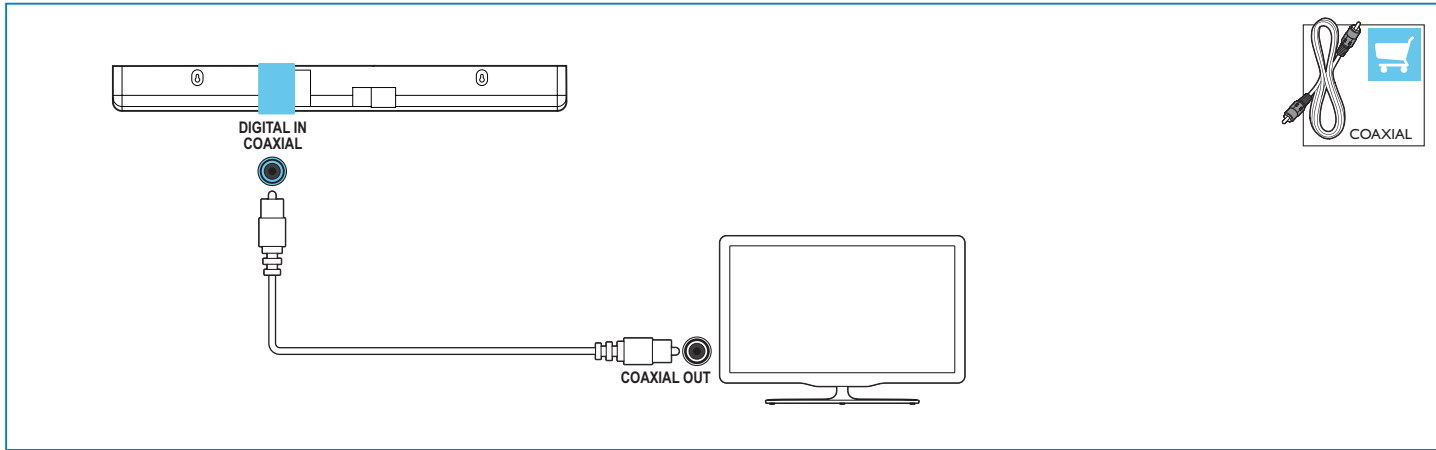




3

- EN** Hear audio from TV in one of the following ways
- ES** Escuche el audio del televisor de una de las siguientes formas
- FR-CA** Vous pouvez diffuser l'audio du téléviseur des façons suivantes

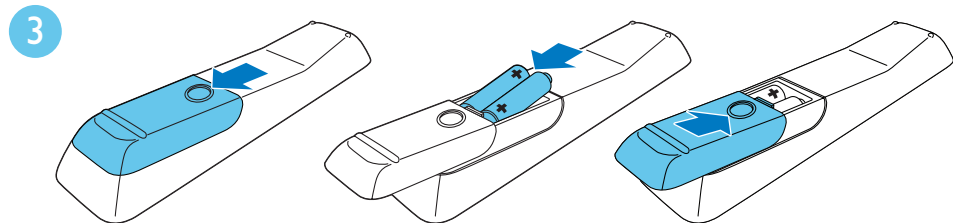
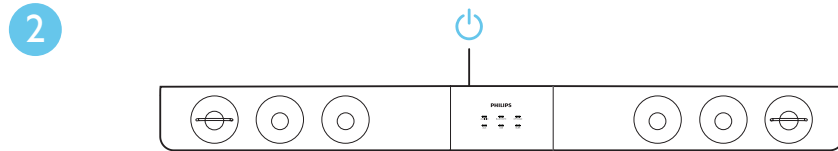
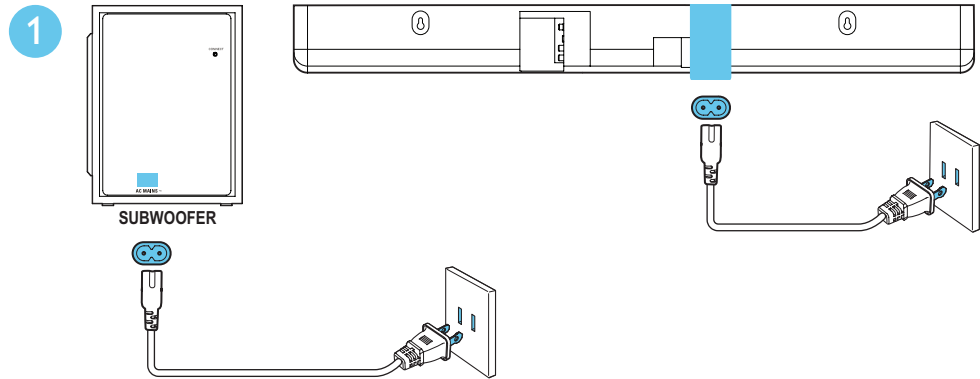






4

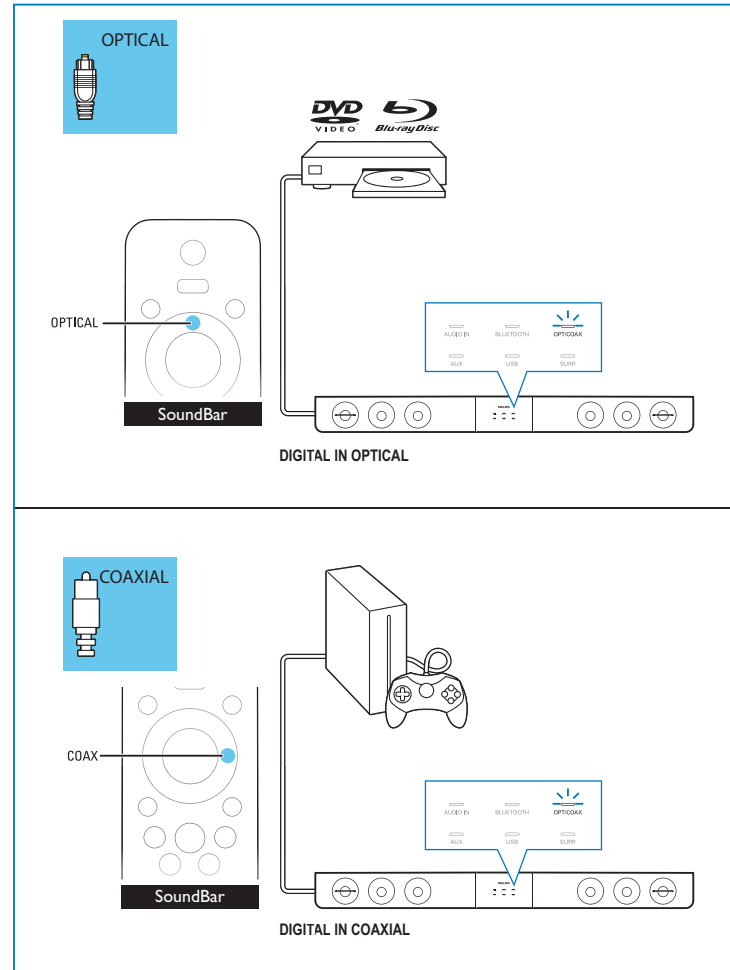
- EN** Switch on the SoundBar
- ES** Encienda el sistema SoundBar
- FR-CA** Allumez le SoundBar

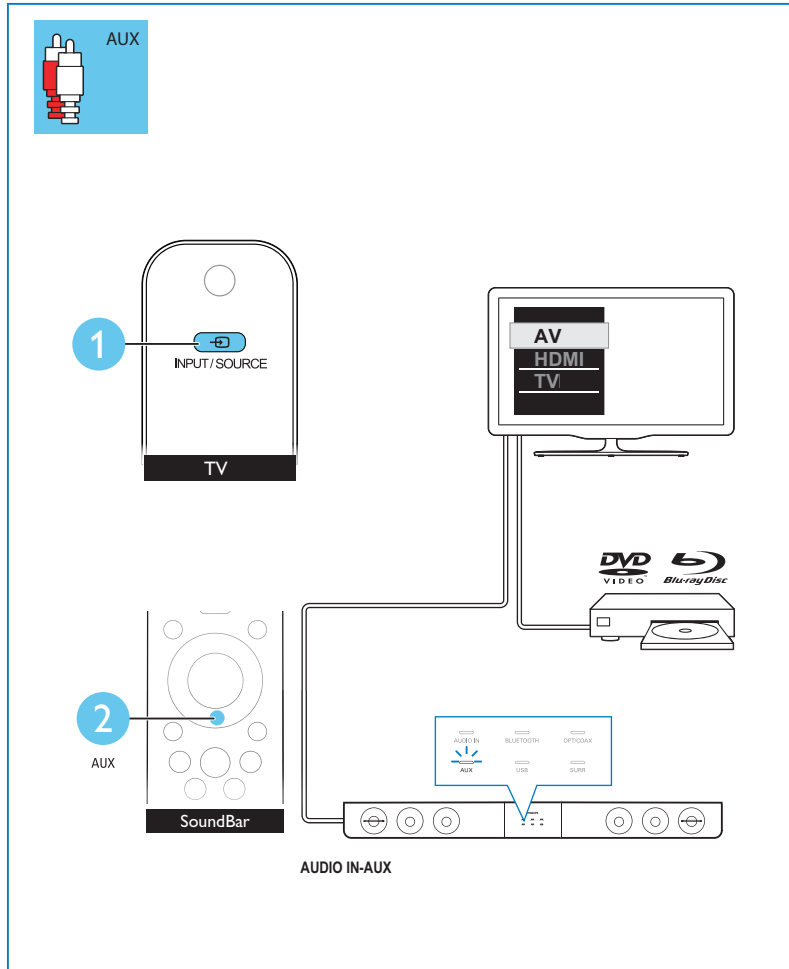
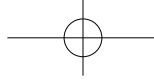




5

- EN** Select the correct audio source
- ES** Selección de la fuente de audio correcta
- FR-CA** Sélectionnez la source audio appropriée

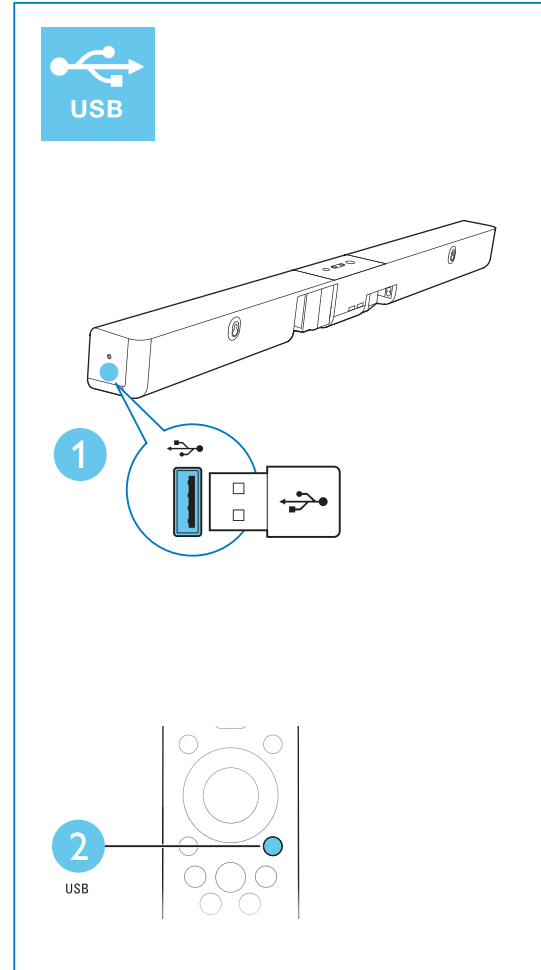
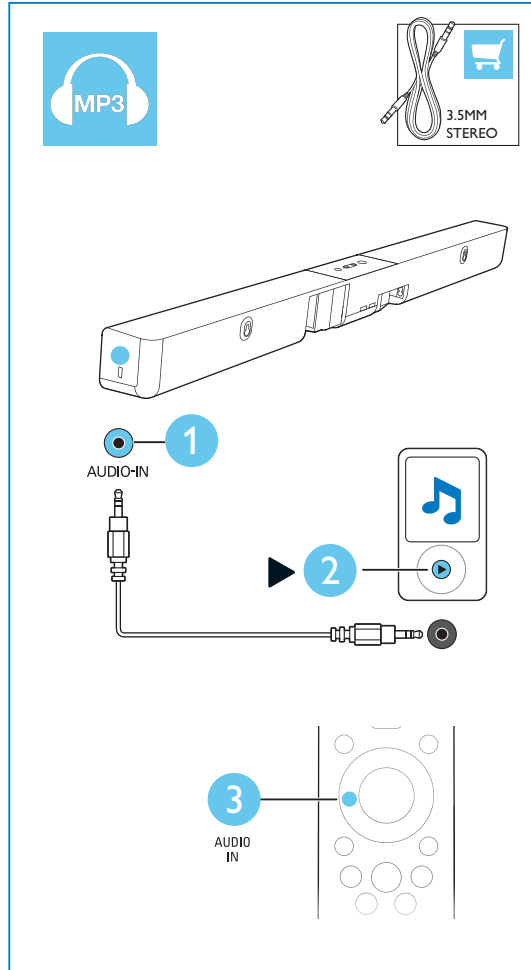






6

- EN** Play other devices
- ES** Reproducción de otros dispositivos
- FR-CA** Lisez le contenu d'autres appareils



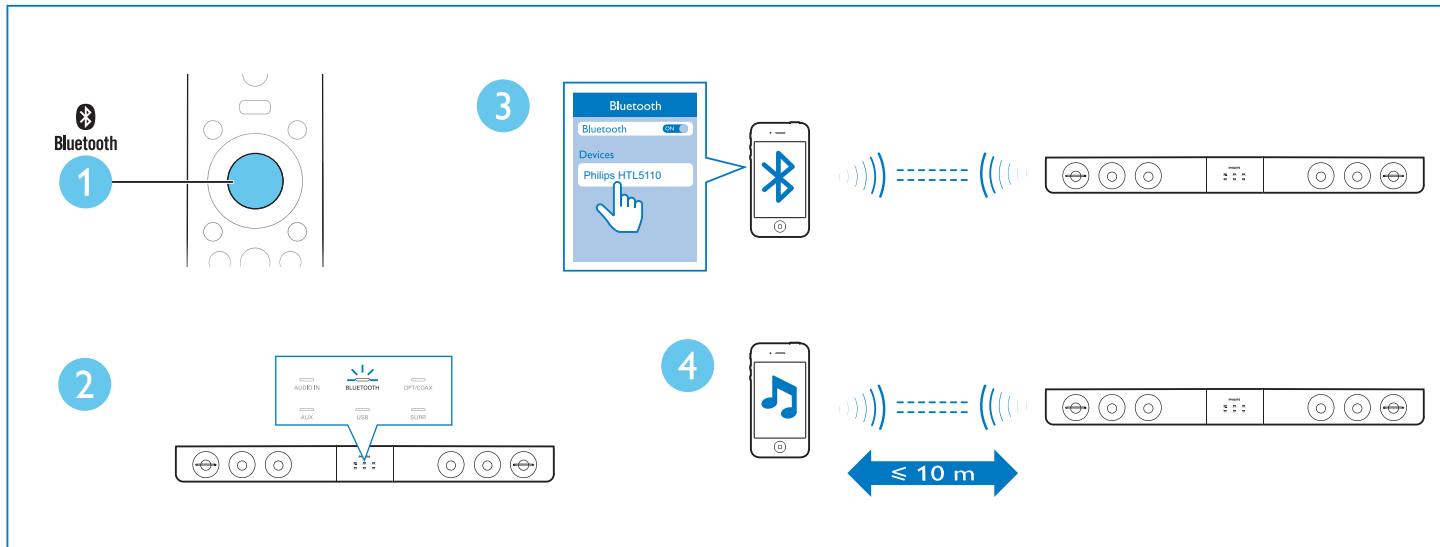


7

EN Play audio through Bluetooth

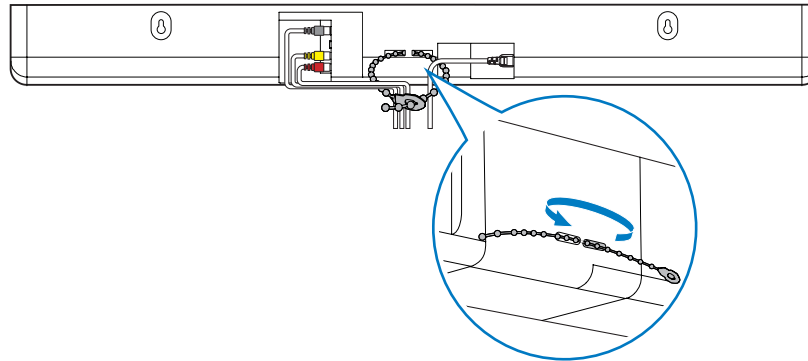
ES Reproducción de audio a través de Bluetooth

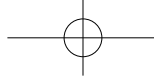
FR-CA Lisez du contenu audio par connexion Bluetooth





- EN** Cable management
- ES** Administración de cables
- FR-CA** Gestion des câbles

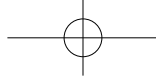




Manufactured under license from Dolby Laboratories. Dolby and the double-D symbol are trademarks of Dolby Laboratories.



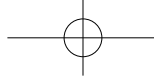
The Bluetooth® word mark and logos are registered trademarks owned by Bluetooth SIG, Inc. and any use of such marks by WOOX Innovations is under license. Other trademarks and trade names are those of their respective owners.



EN For more information about using this product,
visit www.philips.com/support

ES Para obtener más información acerca de este
producto, visite www.philips.com/support

FR-CA Pour en savoir plus sur l'utilisation de ce produit,
visitez le site www.philips.com/support



P&F USA, Inc.
PO Box 2248 Alpharetta, GA 30023-2248



2013 © WOOX Innovations Limited. All rights reserved.
Philips and the Philips' Shield Emblem are registered trademarks of Koninklijke Philips N.V.
and are used by WOOX Innovations Limited under license from Koninklijke Philips N.V.

HTL5110_F7_QSG_V2.0

