

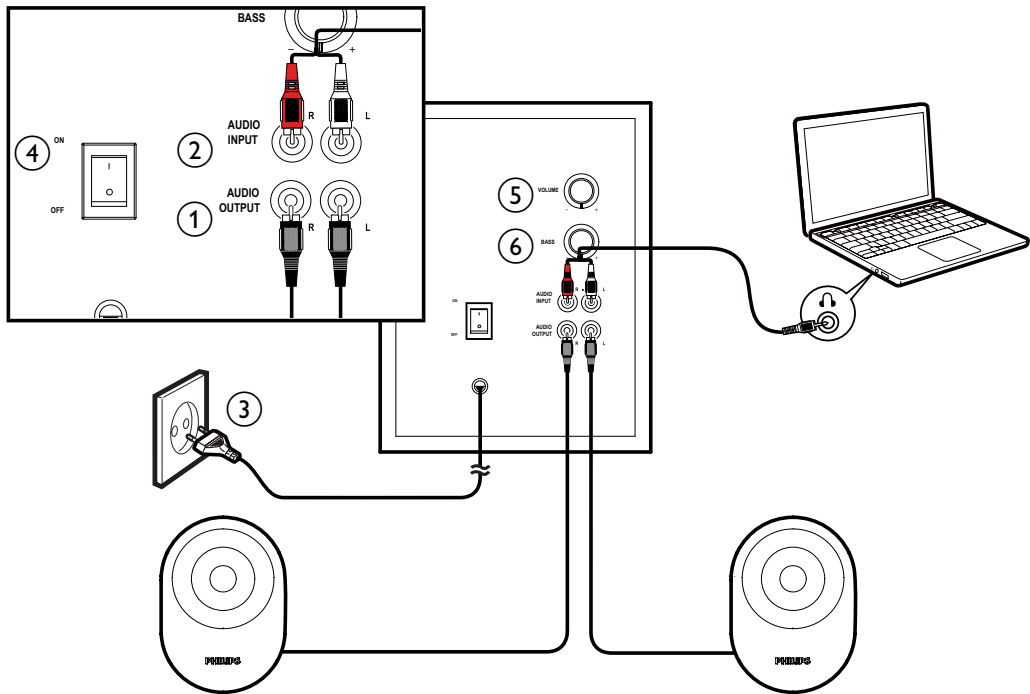
Register your product and get support at
www.philips.com/welcome

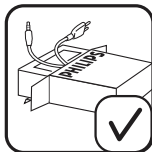
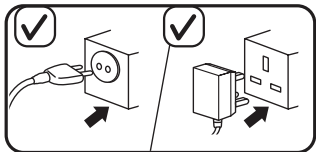
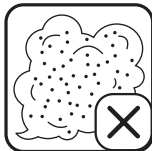
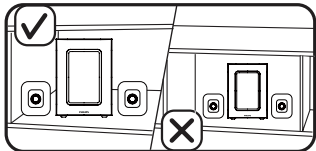
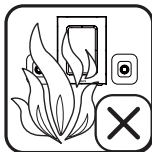
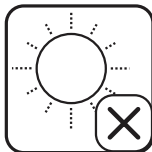
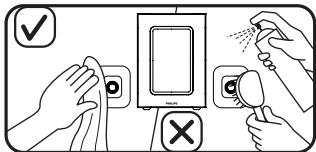
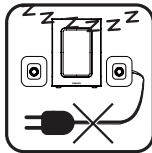
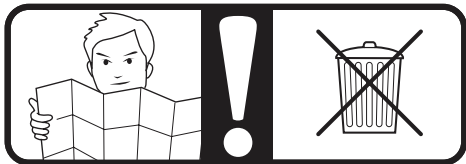
Multimedia Speakers
SPA4350



EN User manual

PHILIPS





Warning: 1. The product shall not be exposed to dripping or splashing and that no objects filled with liquids, such as vases, shall be placed on the product. 2. To completely disconnect the power input, the mains plug of the product shall be disconnected from the mains. 3. The mains plug of the product should not be obstructed OR should be easily accessed during intended use. 4. No naked flame sources, such as lighted candles, should be placed on the products. 5. Where the mains plug or an appliance coupler is used as the disconnect device, the disconnect device shall remain readily operable. 6. The type plate is located on the back of the apparatus. 7. Never remove the casing of this apparatus.

NOTE: Ensure that the multimedia speaker is installed properly before using.

Installation:

- 1 Connect the speaker plug to the audio output socket. (①)
- 2 Connect the audio input plug to the audio output of your computer. (②)
- 3 Plug the AC plug into AC power socket. (③)
- 4 Switch on the speaker. (④)
- 5 Rotate the volume knob to adjust the volume. (⑤)
- 6 Rotate the bass knob to adjust the bass. (⑥)
- 7 Switch off the speaker and unplug.

This product complies with the radio interference requirements of the European Community.



Your product is designed and manufactured with high quality materials and components, which can be recycled and reused. Please inform yourself about the local separate collection system for electrical and electronic products, including those marked by the crossed-out wheely bin symbol. Please act according to your local rules and do not dispose of your old products with your normal household waste.



Product information

AC power input	100-240V~, 50/60Hz, 200mA
Output power (RMS)	30W



Specifications are subject to change without notice.
2013© WOOX Innovations Limited. All rights reserved.
This product was brought to the market by WOOX Innovations Limited or one of its affiliates, further referred to in this document as WOOX Innovations, and is the manufacturer of the product. WOOX Innovations is the warrantor in relation to the product with which this booklet was packaged. Philips and the Philips Shield Emblem are registered trademarks of Koninklijke Philips N.V.