

**PHILIPS**

Micro Music System

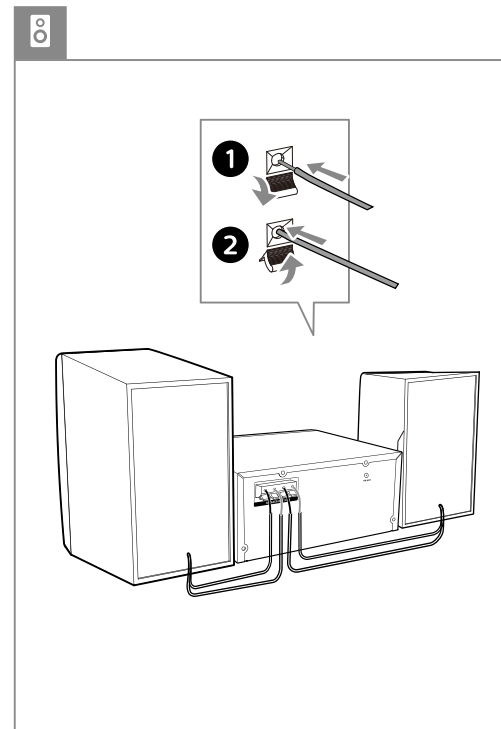
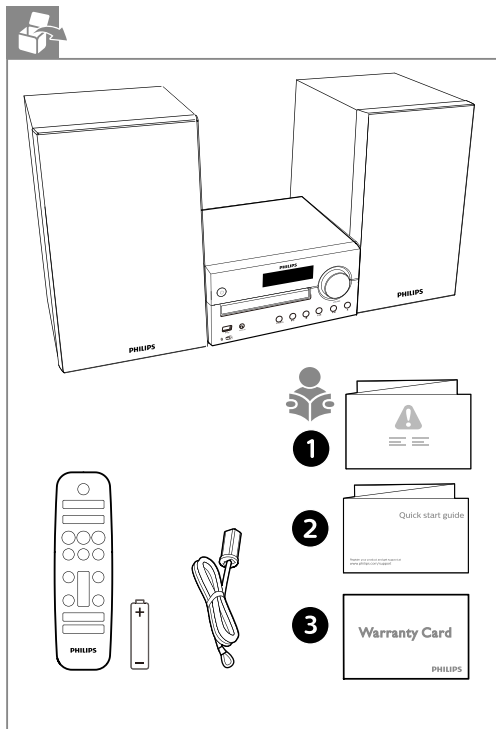
4000 Series

M4505

## Quick Start Guide

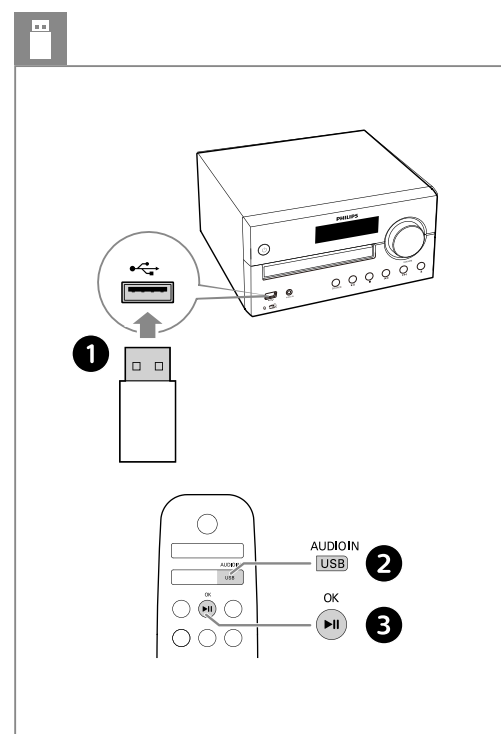
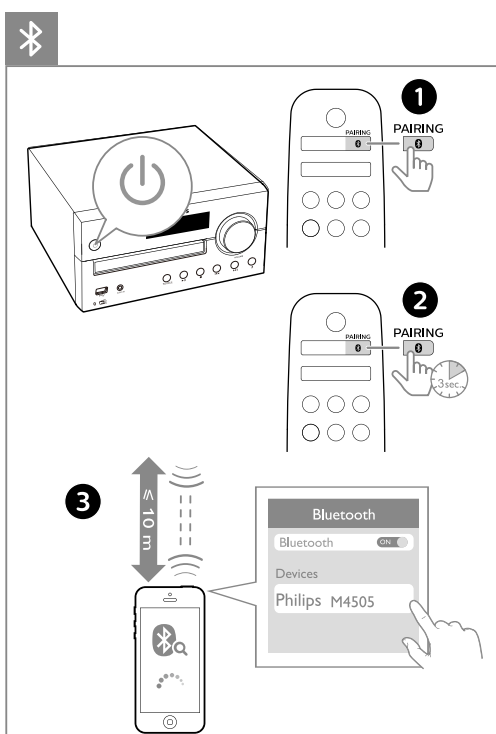
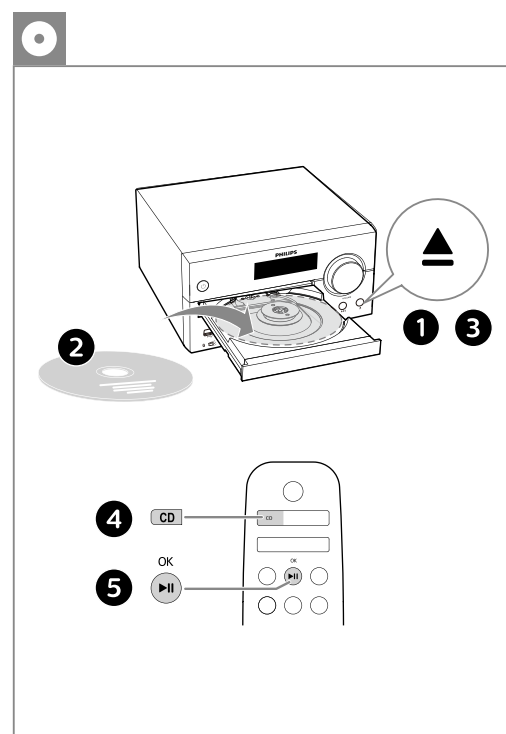
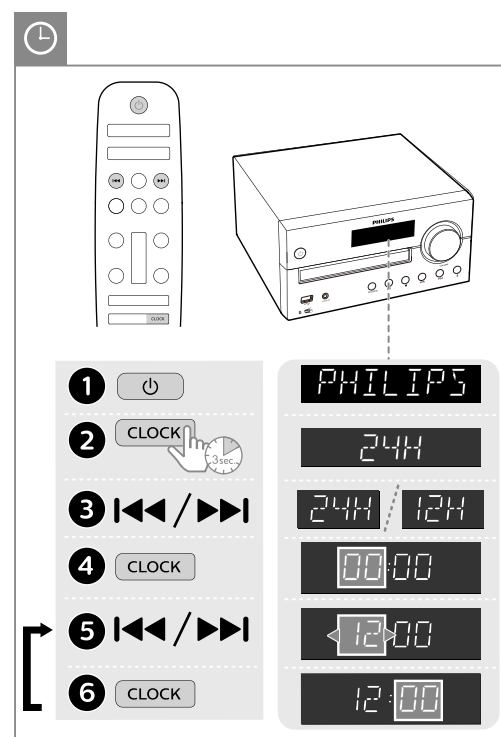
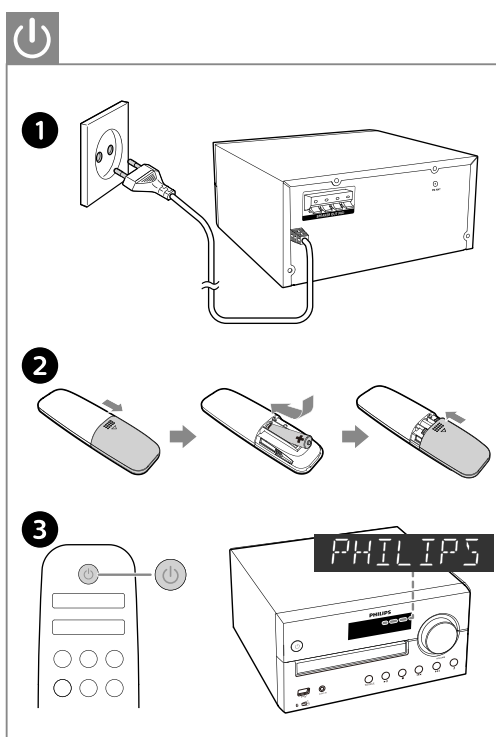


Register your product and get support at  
[www.philips.com/support](http://www.philips.com/support)



Philips and the Philips Shield Emblem are registered trademarks of Koninklijke Philips N.V. and are used under license.  
 This product has been manufactured by and is sold under the responsibility of MMD Hong Kong Holding Limited or one of its affiliates, and MMD Hong Kong Holding Limited is the warrantor in relation to this product.

M4505\_12\_QSG\_V1.0

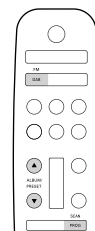
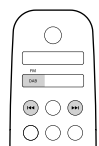
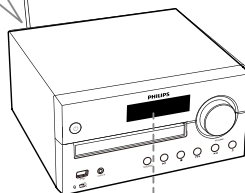
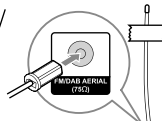
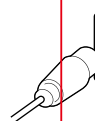
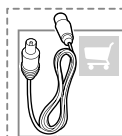


222.00 mm

315.00 mm



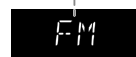
DAB/FM



- 1 FM  
DAB
- 2 OK
- 3 I◀/▶I



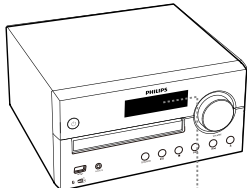
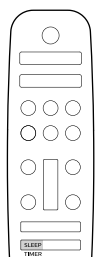
- 1 FM  
DAB
- 2 A I◀/▶I
- 2 B I◀/▶I



- 1 FM  
DAB
- 2 SCAN  
PROG
- 3 ▲/▼



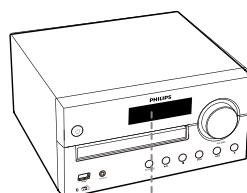
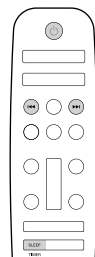
zzz



SLEEP  
TIMER



🔔



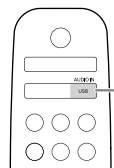
- 1 Power
- 2 SLEEP  
TIMER
- 3 I◀/▶I
- 4 SLEEP  
TIMER



- 5 I◀/▶I
- 6 SLEEP  
TIMER
- 7 I◀/▶I
- 8 I◀/▶I
- 9 SLEEP  
TIMER

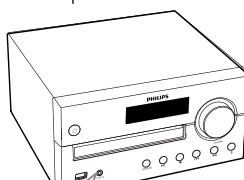


🔊



AUDIO IN  
USB

1



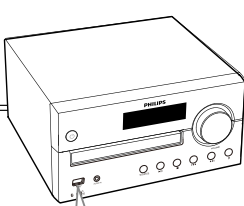
2



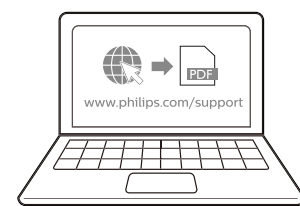
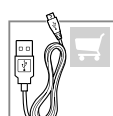
⚡



2



1



www.philips.com/support

www.philips.com/support